

# Annual Report to the Residents 2000-2001

# COLUMBIA BASIN TRUST

Distributed October 2001

FREE Please Recycle



## A legacy for the people

Columbia Basin Trust is an organization working on behalf of the 170,000 residents of the Columbia Basin to bring benefits to the region most affected by the Columbia River Treaty.

Columbia Basin Trust (CBT) is the result of the efforts of Basin residents who came together in the 1990s to press the Province of B.C. for recognition of and mitigation for the negative impacts on the region.

"The initial impacts included the displacement of approximately 2,300 Basin residents from their homes and the loss of 13 communities," says Josh Smienk, chair of the Board of Directors. "But the region continues to live with the devastation, such as the loss of wildlife habitat, dust storms, fluctuating water levels, and changes in weather patterns as a result of large bodies of water. These issues continue to affect all residents of the Columbia Basin in one way or another."

In 1995, Columbia Basin Trust was

endowed with a \$295 million financial commitment from the Province of B.C. or approximately five per cent of the downstream benefits owned by the Province from the U.S. (See below)

Of that, \$250 million is financing three power project developments in the Basin and \$45 million is invested in non-power investments.

The Province also committed to transfer \$32 million over 16 years for operating expenses and \$250 million to the Columbia Power Corporation (CPC), Columbia Basin Trust's joint venture partner in power project developments.

"Columbia Basin Trust asked the people of the Basin what they wanted to do with the money," says Don Johnston, CEO. "Residents overwhelming said they wanted Columbia Basin Trust to invest the money and use only the income earned to deliver benefits back to the residents. This way residents can continue to receive benefits for years to come."



To date, the return on the investments has provided \$8,825,500 in funding to more than 750 projects.

"This funding has supported community hall upgrades, literacy programs, affordable housing for seniors, skills training for youth, wildlife habitat improvements, and cultural events

to name just a few," says Smienk. "The projects directly reflect the community needs addressed by residents."

"Our intent is to continue to work closely with the people of the Basin to continue to build an organization that will be a legacy of the people for many generations," adds Johnston.



## contents

- 2 Chair's Message
- 2 CEO's Message
- 3 Directors, Staff, Committees
- 4 How to Apply for Funding

### DELIVERY OF BENEFITS

- 5 Community Initiatives
- 8 Sector Initiatives
  - 8 Arts, Culture and Heritage
  - 9 Social
  - 9 Environment
  - 11 Education and Training
  - 11 Economic Development
- 12 Basin Initiatives

### NON-POWER INVESTMENTS

- 14 Venture Capital
- 15 Loans and Real Estate

### POWER INVESTMENTS

- 16 CBT Energy Inc. Brilliant Expansion Project
- 17 Arrow Lakes Generating Station Waneta Expansion Project

- 18 Financial Highlights
- 19 Water Management
- 20 Contact Us

## History of the Columbia Basin

In 1961, Canada and the United States signed the Columbia River Treaty.

The purpose of the Treaty is to coordinate flood control and electrical energy production in the Columbia River Basin in the United States and Canada for a 60-year period.

To do this, the Treaty called for the construction of three storage dams - Duncan in 1967, Arrow in 1968, and Mica in 1973. The Treaty also allowed for the construction of Libby dam in 1973 in the United States.

In return for the storage of 15.5 million acre-feet of water, Canada was entitled to one half of the additional power generated at American power plants downstream. These "downstream benefits," which are owned by the Province of B.C., were sold to a group of U.S. utilities for a 30-year period beginning with the scheduled completion of each of the three Treaty

dams in B.C. for \$254 million. The first 30 years of downstream benefit sales began to expire in 1998. The Province owns the downstream benefits and is now receiving the sales revenues for the remaining 30 years of the Treaty. The Province received \$632

*"The Columbia River Treaty, signed in September 1964, was the largest international resources agreement between Canada and the United States."*

million in 2000-2001. Using actual returns from 1998/1999 to 2000/2001 and assuming sales at \$40 U.S. per megawatt hour for the balance of the period to 2024/2025, the total allocations to Columbia Basin Trust amount to approximately eight per cent of the total downstream benefits.

### Impacts of the Treaty

When the water started rising behind the dams, centuries of history were submerged and 2,300 people living along the Arrow Lakes, and in the

Koocanusa, Duncan, and Kinbasket regions were displaced.

Before the Treaty was ratified, there had been a lack of consultation with the residents who were to be displaced, even though they were the ones who stood to lose the most from the project.

Communities along reservoirs are now plagued by dust storms during low water. In a drought year, the Valemount boat dock is 20 kilometres from water.

Environmental surveys in the area indicate the flooding was an ecological disaster in terms of terrestrial and aquatic habitat and climate change.

In the early 1990s, the people of the Basin came together to press the Province for recognition of the injustice of this situation.

Local governments in the Basin coordinated their efforts at the regional district and tribal council level under the Columbia River Treaty Committee, which first met in 1992.

The Committee, in partnership with regional MLAs, negotiated with the Province for the creation of a Trust governed by a board of Basin residents, and an allocation of funding to the region representing a fair share of the ongoing downstream benefits earned under the Treaty, to be managed by Columbia Basin Trust.

On both counts the negotiations were successful, and in 1995, the Columbia Basin Trust Act was created.

The Province committed to transfer \$295 million to the Columbia Basin Trust.



A church is floated out as the water behind a dam rises.



## MESSAGE FROM THE CHAIR

# building a lasting



**C**olumbia Basin Trust is a unique organization that is building a lasting legacy.

Its electrical assets, other endowment capital, and a direction given by the people of the Basin in a truly grass roots process, form the legacy that benefits the people and the environment of the Basin. In the past year, Columbia Basin Trust's asset base has continued to grow from \$272 million in 2000 to \$420 million in 2001.

This year will see the completion of the Arrow Lakes Generating Station, a project that will harness the Columbia River by bypassing an existing storage dam to generate electricity. Columbia Basin Trust, along with its partner, the Columbia Power Corporation, has placed an offer to West Kootenay Power (WKP) to purchase its electrical generating assets consisting of four dams on the Kootenay River between Nelson and Castlegar. This purchase will have no impact on the consumers of WKP and will return a profit back to the Basin. We expect confirmation of the purchase in the fall of 2001 after going through the B.C. Utilities Commission public hearing process.

As a regional corporation, Columbia Basin Trust will be part of the Province's Core Service Review - a comprehensive and rigorous examination of all provincial programs, activities and business units to confirm the government's core roles and responsibilities.

Columbia Basin Trust will put forward an option to purchase the shares of CPC at the higher of fair market or book value before August 1, 2002.

The Option Agreement will be financed through a 25-year debenture by 2030 with interest at one to two per cent above the rate on the Province's bonds.

Acquiring CPC will give Columbia Basin Trust ownership of the skill sets developed by CPC through the joint ventures and a regional capacity for project development and operation.

Investment in hydro projects will ensure that decisions about the long-term future of the valuable

water resource will have our input and be made at home in the Basin.

Columbia Basin Trust's Board was directed by the people to invest funds and use the profits from the investments for Columbia Basin Trust's delivery of benefits.

As we move from the development to operations stage of these projects, and as our other non-power investments start to show returns, we will see a substantial increase in the income flowing to delivery of benefits in the near future.

Working through the many committed volunteers in our sector committees, Columbia Basin Trust's delivery of benefits continues to represent the vision and dreams of Basin residents.

We are particularly pleased with the Youth and Community Involvement Scholarship Program which sees one graduating student in each Basin community with a high school receive a scholarship for up to \$8,000 or \$2,000 for each of four years of post secondary education. The award is based upon a high level of involvement in the community.

The lack of snow pack this year and lack of planning in California will mean even more pressures on an already over stressed river system. In the coming year, the Board is focusing on the difficult water management issues facing British Columbia and the Basin in the next few years. We are working with the people of the Basin to ensure local concerns are part of the complex decisions affecting our region.

Columbia Basin Trust opened its new building in Castlegar which is also occupied by our partner, Columbia Power Corporation, and the City of Castlegar. We also opened additional offices in Cranbrook and Golden, and together with our office

in Nakusp, will be able to serve the people of the Basin closer to home.

This spring we held community meetings to hear from Basin residents directly about how we are following the Columbia Basin Management Plan. We also received feedback on the many partnerships and programs Columbia Basin Trust has developed, ensuring they are doing what they intended, and finding out how we can make them work even better. In the past, we did this through a single symposium, but by bringing these meetings closer to home we tripled the amount of people who participated and helped Columbia Basin Trust stay connected to the Basin we serve.

I would like to thank the Board of Directors, CEO Don Johnston, CBT Energy Inc. CEO Ken Epp, staff, our many steering committee volunteers, our delivery partners, our partner Columbia Power Corporation, and all of you who are actively involved with Columbia Basin Trust for the dedication and support enjoyed over the last year.



Josh Smienk  
chair

## MESSAGE FROM THE CEO

# Simple, Sensible, Straightforward

**C**olumbia Basin Trust is a very new organization. Although it was established in 1995 through the Columbia Basin Trust Act, the first couple of years were spent doing comprehensive community consultation, and setting up the policy framework which would drive the work of Columbia Basin Trust.

The Columbia Basin Management Plan, a requirement of the Act, was adopted in July 1997. Since that time, Columbia Basin Trust has been working diligently to develop and implement investment and delivery of benefits programs. In partnership with the Columbia Power Corporation, we have also been working to complete the Arrow Lakes Generating Station and to do the development work on the other power projects in the Binding Agreement.

Columbia Basin Trust has achieved much success in that short period of time. We have successfully implemented the delivery of benefits program and put more than \$8 million in benefits into the communities in the Basin. We have established strong working relationships with local governments, delivery agents, and partner organizations.

Our steering committees function through the

dedication and energy of over 60 active volunteers. Our investment program has placed more than \$34 million in investments within the Basin. These investments are managed in cooperation with a number of partners, including credit unions, Community Futures Development Corporations, and private companies.

Not only are these investments returning capital to fund the delivery of benefits, they are also directly contributing to the economic stability of communities throughout the Basin.

And yet, we face many challenges as we continue to develop. The major challenge we face is to realize the true potential of Columbia Basin Trust.

We continue to build an organization that is well organized and fiscally responsible, while at the same time it must be an organization that is flexible and responsive. We must find ways to work closely with people, organizations and communities in the Basin in a manner that clearly involves them in achieving the greater self-sufficiency for present and future generations that is talked about in our mission statement.

The success of Columbia Basin Trust will be a direct function of the quality of relationships we are

able to build through the work described above. In order to do this, we need to create an organization that has clear values, that operates in an open and transparent manner, and that ensures equity of access for all communities in the Basin.

We need to be willing to take risks and to learn from our mistakes.

We need to work with residents and all of our partners to create an organization that is simple, sensible and straightforward.



Don Johnston  
chief executive officer

# WORKING FOR THE RESIDENTS

## Board of Directors 2001-2002

The Columbia Basin Trust has an 18-member Board of Directors, made up of residents who have chosen to make this region their home. The Regional Districts of East Kootenay, Central Kootenay, Kootenay Boundary, Columbia-Shuswap, and Fraser-Fort George each appoint two people for a total of 10 directors. The Ktunaxa/Kinbasket Tribal Council appoints two directors and the Province of British Columbia appoints six directors. All Board members must be residents of the Columbia Basin as defined in the Columbia Basin Trust Act. Members of the current Board of Directors are:



Josh Smienk  
Chair  
Balfour



Garry Merkel  
Vice Chair  
Kimberley



John Bergenske  
Skookumchuck



Dieter Bogs  
Trail



Greg Deck  
Radium Hot  
Springs



Anne Edwards  
Moyie



Rick Hardie  
Fruitvale



Mike Kartasheff  
Fort Steele

In Fiscal Year 2000-2001, Dave Bjarnason of Cranbrook, Jo Brown of Winlaw, and Sandy Korman of Castlegar (all Provincial Government appointees) were members of the Board of Directors.

The Board currently has two vacant Provincial appointment seats.



Bill Krusselbrink  
Valemount



Ron Oszust  
Golden



Fred Parker  
Castlegar



Loni Parker  
Revelstoke



Joe Pierre  
Creston



Jeannette  
Townsend  
Valemount



John Voykin  
Castlegar



Deryll White  
Cranbrook

## Staff

The Columbia Basin Trust has 25 staff working out of four offices in the Basin. The four offices provide greater geographic access to Columbia Basin Trust and its resources. To contact any staff visit our website at [www.cbt.org](http://www.cbt.org) or call 1-800-505-8998. We have also provided information about all the offices on Page 20 of this document.



### Castlegar Office

(Back row) Deb Stewart, Accounting Technician/Supervisor; Nancy Boucher, Assistant, Community Liaison, Economic Development; Tammy Perepolkin, Accounting Technician; Stacy Donald, Reception; Maggie Maloney, Board Liaison; Christina Rezanoff, Accounting Technician; Jane Hutchins, Manager of Operations and Planning; and Patty Bossort, Community Liaison and Economic Development. (Front Row) Don Johnston, Chief Executive Officer; Matt Wenger, Information Technology Director; Bob Krysac, Chief Financial Officer; and Stacy Barter, Youth Coordinator.

Photo by Keith Cardriver

### Nakusp Office

(L to R) Dave Strachan, Manager, Investments; Merrilla Thorp, Assistant, Community Liaison, Social; Marilyn Rivers, Information Technology; Rina Gresniuk, Assistant, Investments; and Doug Switzer, Community Liaison, Social Sector.



### Golden Office

(Right) Kindy Gosal, Community Liaison, Environment; and (Left) Christina Hilborne, Assistant, Community Liaison, Environment.



### Cranbrook Office

(Back row L to R) Richard Wake, Web/Database Programmer; Jean Terlesky, Community Liaison, Education and Training, and Arts, Culture and Heritage; and Rhonda Gilbertson, Assistant, Community Liaison, Education and Training, and Arts, Culture and Heritage; (Front Row) Jody Lamb, Communications Officer; Agnes Koch, Monitoring and Evaluation; and Rachel Elkey, Communications Assistant.



## Steering Committees

The Columbia Basin Trust has approximately 60 volunteers (on five sector steering committees) who advise the Board of Directors about the types of programs to develop. These volunteers are selected for the diverse skills and backgrounds they bring to each of the committees. Members of the five sector steering committees are:

### Social Sector

- Andrew Earnshaw  
Nelson
- Gordon Fletcher  
Trail
- Cathy Girling  
Revelstoke
- Andrew Jarrett  
Salmo
- Gord Johnston  
Cranbrook
- Rory Lindsay  
Slocan

- Denice Louie  
Creston
- Gary Ockenden  
Castlegar
- Bobby Roe  
Valemount
- Mary Walters  
Nelson
- Dorothy Wardwell  
Harrogate
- Mae Williams  
Fernie

### Arts, Culture and Heritage Sector

Columbia Basin Trust relies on the expertise of the Columbia Kootenay Cultural Alliance (CKCA), an organization of arts council representatives, to determine arts, culture and heritage programming in the Basin.

The CKCA Steering Committee consists of:

- Tony Austin  
Kimberley
- Pamela Cinnamon  
Valemount
- Alice Hale  
Invermere
- Trevor Hall  
New Denver
- Jacquie Hamilton  
Castlegar
- Stephanie Judy  
Kootenay Lake
- Manfred Kern  
Kimberley
- Al Major  
Golden
- Carol Palladino  
Revelstoke
- Joan Ralston  
Nelson
- Jane Shaw  
Robson Valley
- Joe Warshawsky  
Fernie

### Environment Sector

- Bob Campsall  
Invermere
- Patricia Creelman  
Cranbrook
- Kathy Eichenberger  
Crescent Valley
- Denise English  
Golden
- Dennis McDonald  
Creston
- Cindy Pearce  
Revelstoke
- Jan Skiber  
Kimberley
- Paul Willis  
Cranbrook

### Education and Training Sector

- Kim Bergh  
Nelson
- Scott Cobbe  
Creston
- Craig Hillman  
Kimberley
- Kay Hohn  
Salmo
- Alan Mason  
Revelstoke
- Jim McAllister  
Cranbrook
- Geoffrey Nagle  
Golden
- Joe Ranallo  
Rosland
- George Watson  
Kimberley

### Economic Development Sector

- Corrie Barraclough  
Kimberley
- Don Boyle  
Cranbrook
- Rob Gay  
Cranbrook
- Paul Hambruch  
Golden
- Bruce Hardy  
Castlegar
- Lee Malleau  
Golden
- Thomas Murray  
Nelson
- Lloyd Sharpe  
Elko
- Ian Thomas  
Rosland
- Maureen Weddell  
Revelstoke
- Barb Yeomans  
New Denver

# ? How Do I Apply for Funding

People all across the Basin have great project ideas that need funding.

In trying to fulfill the Columbia Basin Management Plan (*See article below*), Columbia Basin Trust sets priorities and develops programs to address the needs identified by Basin residents.

Columbia Basin Trust has three main funding envelopes: Community Initiatives, Sector Initiatives and Basin Initiatives.

Within each envelop, there are specific programs to address different needs in the Basin. (*See chart below*)

Columbia Basin Trust involves the people of the Basin in decision making

about how funding can best be delivered to communities.

In trying to meet this commitment, CBT works with many organizations which have the experience and skills to help deliver some of the programs that have been established.

Interested applicants are often referred to a "delivery partner" to apply to some programs.

In the past year, Columbia Basin Trust hired four Community Liaisons to work with the public and assist them in accessing CBT programs.

**Community Liaisons** will help individuals or groups identify which program is most suitable to apply for

funding for their particular project idea. Each Community Liaison works within a designated geographic area of the Basin to make them more accessible to all residents.

As the primary contacts for the Columbia Basin Trust in their designated regions, Community Liaisons also develop relationships with community organizations and individuals to enhance public participation in the Columbia Basin Trust.

**Contact the Community Liaison** in your area for assistance on how to access Columbia Basin Trust funding:

In Cranbrook, Kimberley, Creston, Fernie, Sparwood and area communi-

ties contact **Jean Terlesky at 426-8816.**

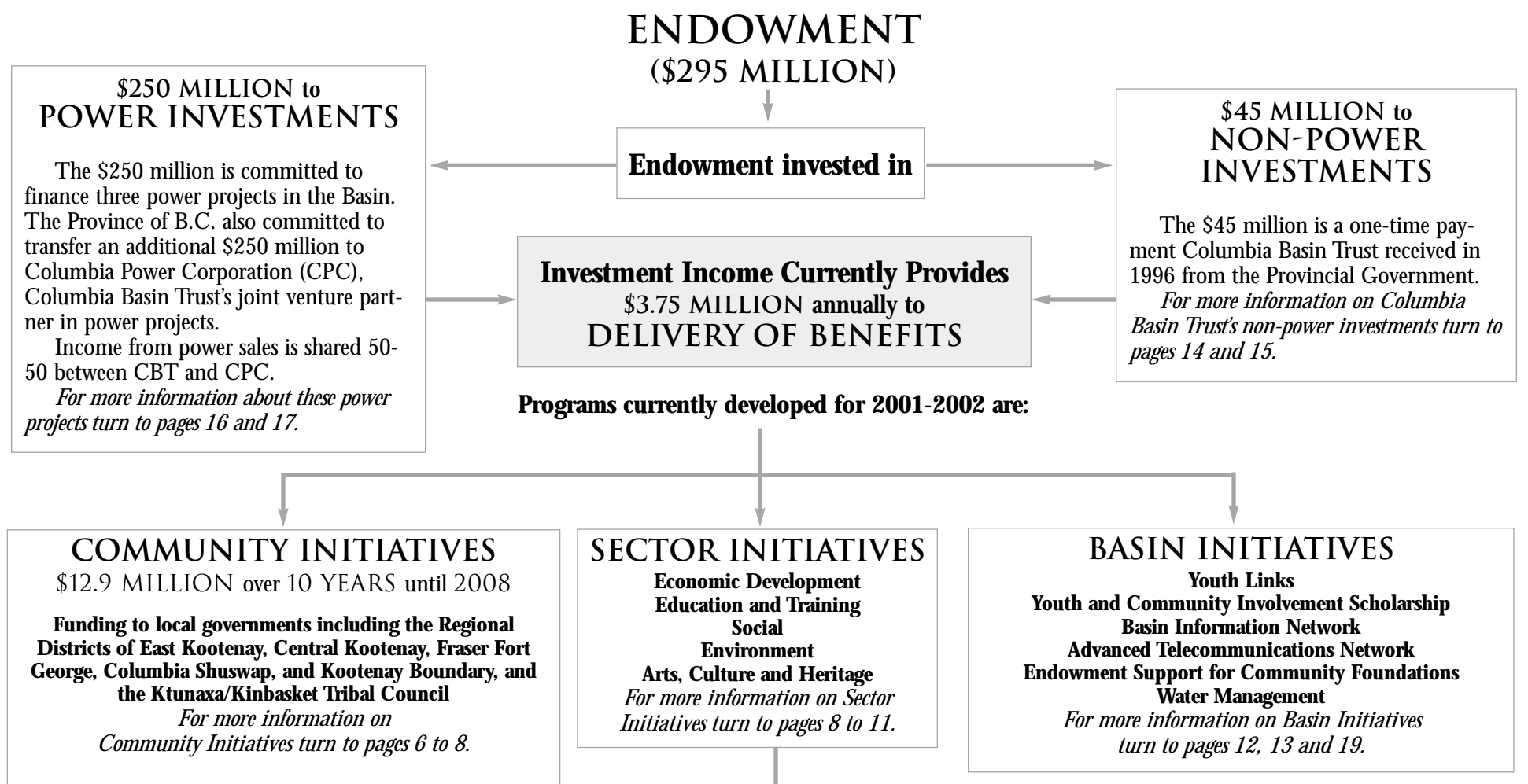
In Invermere, Radium, Golden, Valemount and area communities contact **Kindy Gosal at 344-7015.**

In Slocan, New Denver, Kaslo, Nakusp, Revelstoke and area communities contact **Doug Switzer at 265-9936.**

In Nelson, Castlegar, Rossland Trail, Balfour, Salmo and area communities contact **Patty Bossort at 365-6633.**

*Note: Application deadlines (to be considered for funding) vary from program to program. Columbia Basin Trust publicly advertises all funding opportunities in newspapers throughout the Basin, as well as on the Internet at [www.cbt.org](http://www.cbt.org).*

## *From endowment to the people of the Basin:* Understanding COLUMBIA BASIN TRUST'S Model



**With the advice of Sector Steering Committees, the following strategic programs have been developed to address specific needs in the Basin.**

**ECONOMIC DEVELOPMENT (\$550,000)**

Basin Business Advocates Program  
Rural Economic Development Program

**EDUCATION AND TRAINING (\$200,000)**

Resources for Family Literacy  
Training Fee Support Program

**SOCIAL (\$550,000)**

Affordable Housing  
Early Childhood Supports Program  
Families Program

**ENVIRONMENT (\$550,000)**

Community Environmental Stewardship Program  
Ecosystem Awareness/ Education Program  
Aquatic Ecosystems Restoration and Conservation Program  
Terrestrial Ecosystems Restoration and Conservation Program

**ARTS, CULTURE AND HERITAGE (\$200,000)**

Funding Support to Communities  
Capital Funding  
Funding Support for Touring  
Mentoring/Master Classes Program  
Arts Council Development  
ArtsSmarts

## The Columbia Basin Management Plan

Under the terms of the Columbia Basin Trust Act, CBT was required to prepare a long-term Columbia Basin Management Plan (the Plan).

The Plan sets out Columbia Basin Trust's mission, objectives, priorities, programs, and requirements for evaluation and monitoring.

It is Columbia Basin Trust's mission to support efforts by the people of the Basin to create a legacy of social, economic and environmental well being

and to achieve greater self-sufficiency for present and future generations.

The people of the Basin were instrumental in the creation of the Plan. In addition to Symposia held in 1995 and 1997, ongoing focus groups, information sessions, and kitchen table meetings were held throughout the Basin to ensure the Plan was the creation of the people of the Basin.

In July 1997, the Board of Directors approved the five-year Plan.

The two functions of the Plan are:

- ✓ To invest the capital and manage the assets; and
- ✓ To spend the income earned from Columbia Basin Trust's investments to deliver benefits to the region.

These core functions are the basis of Columbia Basin Trust's investment and delivery of benefits programs.

In an effort to continue to include residents in decision making, 11 com-

munity meetings were held in 2001 to receive input on the current programs undertaken.

Columbia Basin Trust also established ongoing monitoring and evaluation of all programs to ensure the goals and objectives of the Plan are met.

*Turn to page 19 for more information on monitoring and evaluation.*

*To receive a copy of the Columbia Basin Management Plan, contact CBT at 1-800-505-8998.*



# DELIVERY OF BENEFITS Community Initiatives

Columbia Basin Trust partners with the five regional districts and the Ktunaxa/Kinbasket Tribal Council in the Basin to deliver Community Initiatives to residents.

Columbia Basin Trust has committed to transfer \$12.9 million over 10 years to these partners to help inject money directly into communities for projects they deem important and that might not otherwise be undertaken. Each community or regional district electoral area in the Basin receives a per capita portion of the \$7.4 million of Basin Community Initiatives funding. A further \$5.5 million is transferred to areas of the Basin most affected by the Columbia River Treaty.

Columbia Basin Trust encourages the partners to develop their own unique

process for involving the residents of their areas in recommending and selecting projects for funding.

The partners have the opportunity to refine how the program is delivered to ensure community participation in project selection and project accountability.

Since the program started three years ago, more than 550 community supported projects have been funded through Community Initiatives.

Although application deadlines can vary by regional district or tribal council, forms are usually available by March of each year. Contact information and more details about application processes for each regional district or tribal council office are available on Pages 5 to 7.

## REGIONAL DISTRICT OF COLUMBIA SHUSWAP

The Regional District of Columbia Shuswap is not entirely within the Columbia Basin Trust's mandated area. Only the communities of Revelstoke and Golden are in the Basin and therefore the regional district has assigned the administration of its funds directly to those communities. To apply for funds in Revelstoke contact Debra Wozniak at 1-250-837-5345; in Golden contact Greg Switenky at 1-250-344-2271.

# Bear-proofing Revelstoke

### Project Proponent:

B.C. Conservation Foundation

**Project:** Bear Aware Program

**Funding:** \$10,500

Conflicts between bears and humans are down in Revelstoke thanks to a public education program that helps bear-proof communities.

"The Bear Aware Program helps people reduce the risk of having bears in their community," says Paula Couturier, co-ordinator of the Revelstoke Bear Aware Program. "Bears are attracted to fruit trees, garbage, compost, animal feed, barbecues and more. When these are managed properly it's less likely a bear will be attracted to the area."

Funds from Community Initiatives are being used to hire a Bear Aware co-ordinator in Revelstoke from June to November, peak months for bear activity.

In a two-year period ending in 1995, 56 nuisance bears were killed in the Revelstoke area. Compare that with figures that show 19 bears were killed in a four-year period (ending in 2000) after the Bear Aware Program started, and there's no doubt the program is working.

"It would be very difficult to deliver this important education program without the Columbia Basin Trust," says Couturier, who notes other local funders include Parks Canada, the Regional District of



Columbia Shuswap, the City of Revelstoke, Bear In Mind Gifts, and Sota Instruments.

This program, which started in the Columbia Basin, has become a provincial program guided by the B.C.

Conservation Foundation and is now delivered in communities across the province.

*For more information on Bear Aware visit [www.bearaware.bc.ca](http://www.bearaware.bc.ca) on the Internet.*

### PROJECTS FUNDED 2000-2001

**Total Funding Over 10 Years (Basin Community Initiatives and Affected Areas combined): \$1,880,080**

#### Revelstoke

B.C. Conservation Foundation \$10,500 (See featured project)  
 Illecillewaet Greenbelt Society \$3,660  
 Revelstoke Theatre Company \$10,000  
 Community Futures Development Corporation of Revelstoke \$10,000  
 Revelstoke and District Historical Association \$10,092  
 Illecillewaet Greenbelt Society \$8,000  
 Family and Youth Resources \$20,000  
 Revelstoke Nordic Ski Club \$8,250  
 Rescue Society \$15,000  
 Revelstoke Arts Council \$15,000  
 Forest Museum Society \$12,000  
 Revelstoke Hospital Auxiliary Society \$10,000  
 Revelstoke Community Skills Centre \$10,000  
 Revelstoke Community Childcare \$7,024  
 Family and Youth Resources \$20,000  
 Friends of Mt. Revelstoke \$15,000  
 Columbia Mountain Institute \$9,000  
 Revelstoke Figure Skating Club \$4,500  
 Big Eddy School and Community Group \$1,800  
 Revelstoke Cycling Association \$11,500  
 Columbia Mountain Institute \$2,500  
 Revelstoke Blues Society \$3,500  
 Selkirk Saddle Club \$5,000

#### Golden

Golden Dolphin Swim Club \$2,000  
 Whitetooth Race Teams \$2,500  
 Golden Snowmobile Club \$20,000  
 Golden Family Literacy \$16,500  
 Golden and District Historical Society \$10,000  
 Rotary Club of Golden \$10,000  
 Golden Junior Rockets Hockey Club \$4,000  
 Rotary Club of Golden \$44,300  
 Golden Flying Site \$30,000

## REGIONAL DISTRICT OF FRASER-FORT GEORGE

Only the community of Valemout is located within the Regional District of Fraser-Fort George in the Columbia Basin. For this reason, all funds allocated to this regional district are administered by the Village of Valemout. To apply for funds in Valemout contact Silvio Gislimberti at 1-250-566-4435.

# Interpretive Centre planned for Valemout

### Project Proponent:

Village of Valemout

**Project:** Interpretive Centre

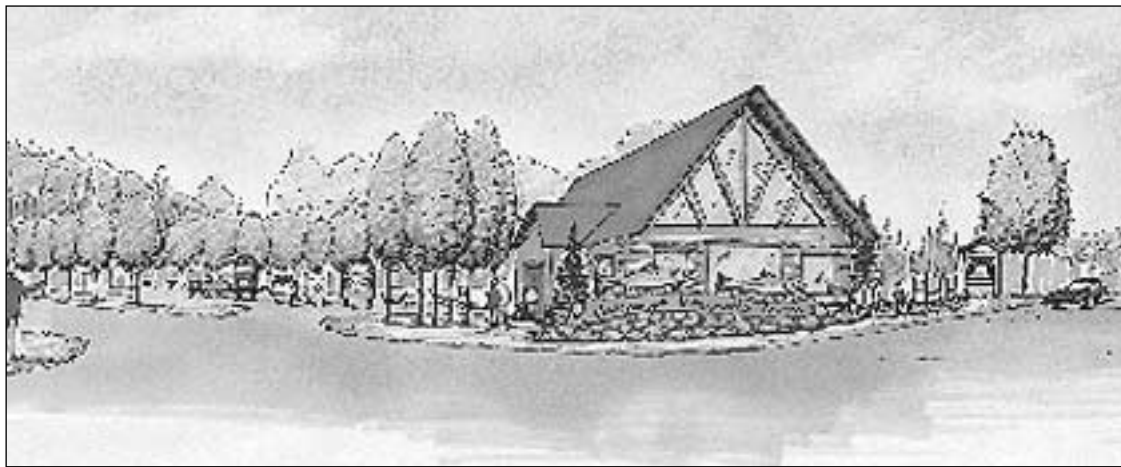
**Funding:** \$50,000

The Village of Valemout, at the northern most part of the Basin, is working with the Regional District of Fraser-Fort George, to develop an interpretive centre on the main highway into town.

With funding from Community Initiatives, and other funding partners, the Village has acquired three acres of land that will become home to the Valemout Interpretive Centre. When built, the centre will offer

tourist information, natural and cultural exhibits, meeting and exhibit space, picnic areas, trails, a concession stand, and more.

"We feel the interpretive centre will help preserve the area's river culture, introduce visitors to the natural and recreation opportunities, offer a number of education benefits, and it will help diversify the local economy by encouraging the tourism sector," says Silvio Gislimberti, economic development officer for the Village of Valemout. "It will also be a place for local artisans and entrepreneurs to showcase their talents."



Conceptual drawing of the Village of Valemout Interpretive Centre.

Valemout is in the Robson Valley which is home to both the Fraser and Columbia River headwaters. And the centre will showcase the importance of both river systems to the social, cultural, environmental, historical and economic well-being of the area.

The next step is to secure funds for the construction of the centre which promoters hope will bring more visitors to the area and more local jobs.

### PROJECTS FUNDED 2000-2001

**Total Funding Over 10 Years (Basin Community Initiatives and Affected Areas combined): \$908,500**

3 Valley Metis Association \$18,602

Valemout Marina Association \$10,000

Valemout Historic Society \$500

Valemout Lions Club \$4,000

Village of Valemout Interpretive Centre \$50,000 (See featured project)

Yellowhead Outdoor Recreation Association \$4,170

Valemout Anglican/United Church \$1,500

R.C.M.P DARE Program \$3,000

# DELIVERY OF BENEFITS Community Initiatives

## REGIONAL DISTRICT OF EAST KOOTENAY

The Regional District of East Kootenay has a project proposal application package available for people interested in applying for Community Initiatives funding in this area. Applications are usually available by March each year. Deadlines for applying are near the end of April. Interested groups should contact Elaine Knowlson at the Regional District of East Kootenay at 1-888-478-7335 or 1-250-489-2791 to receive an application package.

## Bus service keeps Valley connected

**Project Proponent:** Fernie Women's Resource Centre  
**Project:** Centre relocation and public transit in the Elk Valley  
**Funding:** \$24,299 (\$13,267 for the bus service)

Bus service in the Elk Valley will run for another year thanks to a partnership between Columbia Basin Trust, the municipalities of Elkford, Fernie and Sparwood, and Kootenay Taxi, which operates the bus service.

"Transportation is a basic need for many people living in the valley," says Debbie Johnston, co-ordinator of the

Fernie Women's Centre, which helped get the buses running in 1999.

Thanks to funds from Community Initiatives, and other funding partners, the Elk Valley Connector has been running five days a week and makes two daily trips through the 70-kilometre long valley, carrying a group of riders who rely on the service.

"There's a lot of potential for this bus service to grow and continue to support the people who live in the valley," says Johnston. "And we're thrilled that we've managed to pull it together, along with our partners."



Elk Valley Connector driver Wayne Brown welcomes new riders.

Photo by Naomi McCannan

### PROJECTS FUNDED 2000-2001

**Total Funding Over 10 Years (Basin Community Initiatives and Affected Areas combined): \$3,427,210**

**Electoral Area A**  
Elkford Rod and Gun Club \$1,400

**Electoral Area B**  
Baynes Lake Parks and Recreation Society \$1,889.97  
Elko Cemetery Board \$29,300  
Galloway Curling Club \$10,470  
Grasmere Reading Centre \$1,000  
Grasmere Recreation Club \$2,000  
Sand Creek Senior Citizens \$17,254.82  
Sand Creek Community Club \$8,675

**Electoral Area C**  
Bull River Bar-B-Q Ranchers Society \$10,000  
Mayook Community Association \$28,000  
Steepleview Recreation Association \$14,046

**Electoral Area E**  
Kimberley Rocky Mountain Riders \$1,100  
Wasa and District Historical Association \$1,000  
Wasa and District Lions Club \$6,000

**Electoral Area F**  
Fairmont Hot Springs Fire Department \$10,000

**City of Cranbrook**  
City of Cranbrook Cycle/Walk Trail \$167,564.34  
Key City Theatre Society \$7,000  
Royal Canadian Legion Branch No. 24 \$6,020.66

**District of Elkford**  
Elkford 50+ Club \$506.17  
Elkford Public Library \$4,377.87

**District of Invermere**  
Invermere Public Library \$1,000  
Lakeview Manor Society \$5,000  
Windermere District Historical Society \$3,000  
Parent Advisory Council \$365.34

**City of Kimberley**  
Consumer Advisory Society \$2,000  
Kimberley Community Skills Centre \$2,000  
Kimberley Family Literacy \$4,000  
Youth for Kimberley Society \$10,000

**City of Fernie**  
Fernie PARTY Program \$2,500  
Royal Canadian Legion Branch No. 36 \$2,750

**District of Sparwood**  
District of Sparwood Youth Park \$4,610.43  
Sparwood Senior Citizens Society \$4,914.89

**Combined RDEK Funding**  
Cranbrook Boys and Girls Club  
Books for Babies in the Columbia Valley  
District of Invermere \$250.00  
Village of Radium Hot Springs \$215.14  
Electoral Area F \$1,370.11  
Electoral Area G \$628.55

Cranbrook Planned Parenthood  
City of Fernie \$2,500.00  
City of Kimberley \$2,000.00  
District of Invermere \$1,000.00

Elk Valley Air Cadets Squadron 279  
District of Elkford \$2,467.77  
District of Sparwood \$2,477.00  
Electoral Area A \$2,055.23

Fernie Women's Resource and Drop-In Centre  
(See featured project)  
City of Fernie \$11,739.76  
District of Elkford \$4,952.90  
District of Sparwood \$4,952.00  
Electoral Area A \$2,655.10

Friends of Fort Steele  
City of Fernie \$2,500.00  
District of Sparwood \$1,000.00  
Electoral Area A \$2,055.23  
Electoral Area C \$1,000.00  
Electoral Area E \$400.00

Joseph's Prairie Film Society  
Electoral Area C \$1,192.46  
Electoral Area E \$200.00

TLC - The Land Conservancy of BC  
Electoral Area C \$1,000  
District of Invermere \$1,500

UCV Big Brothers and Sisters  
Electoral Area F \$1,035.11  
Electoral Area G \$474.86  
Village of Radium Hot Springs \$162.53

## KTUNAXA/KINBASKET TRIBAL COUNCIL

The Ktunaxa/Kinbasket Tribal Council has established four programs it annually funds through Columbia Basin Trust's Community Initiatives. For more information on the programs listed below, contact Tribal Council at 1-250-489-2464.

## Passing down Ktunaxa traditions, language

**Project Proponent:** Ktunaxa/Kinbasket Tribal Council  
**Project:** Youth/Elder Mentor Awards  
**Funding:** \$4,000

The Ktunaxa/Kinbasket Tribal Council (KKTC) is helping to recognize youth who have shown an interest in traditional knowledge.

The 2000-2001 winners of the

Youth Elder Mentor Awards were Lindsey Whitehead from the St. Mary's Band who practices traditional hunting and shares the food with elders in the community, and Jason Louie from the Lower Kootenay Band who was recognized for his work learning and teaching the Ktunaxa (doo nah ha) language.

"There is a real shortage of young

people who speak the Ktunaxa language, which is threatened with extinction," says Gwen Phillips director of health for the KKTC. "And the language is key to understanding traditional knowledge."

"The language is important because it gives us our identity; it's unique just as we are as a Nation. I didn't realize this until I was almost an adult," says Louie. "Now, I think that the language should be a priority for all of us or else it will be lost. It's often difficult for youth to learn it; they are already going through a lot and some of them have to get over their shyness around the language. We're too comfortable with English. It's not so bad for the little kids like the ones I work with. I make learning fun

and they like the challenge but we need to find new ways to get the other young people involved."

Funds from Community Initiatives are used to send award winners, along with an elder, to the Aboriginal Achievement Awards in Canada.



Jason Louie (right) helps keep the Ktunaxa language alive by teaching it to young children at the Yaqan Nukiy community school on the Lower Kootenay Reserve.

### PROJECTS FUNDED 2000-2001

**Total Funding Over 10 Years (Basin Community Initiatives and Affected Areas combined): \$230,500**

The Community Legacy Component  
\$10,000  
A matching capital grant to support the construction of community social/cultural/recreational facilities.

The Community Initiative Component  
\$5,000  
Support local community groups in promoting and hosting local events that offer an

opportunity for residents to participate in activities, not possible without financial support.

The Youth/Elder Mentor Component  
\$4,000  
Encourage intergenerational relationship building. (See featured project.)

The Awards of Excellence Component  
\$2,050  
Acknowledge community members who have demonstrated a personal commitment to the preservation of the Ktunaxa language and culture.



# DELIVERY OF BENEFITS Community Initiatives

## REGIONAL DISTRICT OF KOOTENAY BOUNDARY

The Regional District of Kootenay Boundary also is not entirely within the Columbia Basin Trust's mandated area. Communities in the Columbia Basin are Trail, Rossland, Fruitvale, Warfield, Montrose and rural areas around these towns and cities. To apply for funds in these areas contact Elaine Kumar at 1-800-355-7352 or 1-250-368-9148.

## Book keeps local history alive

**Project Proponent:** Beaver Valley Public Library  
**Project:** Local history book  
**Funding:** \$30,000

Funds from the Columbia Basin Trust have guaranteed people in the Beaver Valley a place in the history books - their own history book that is.

"People come in to the library looking for local history and we just don't have the resources," says Chief Librarian Dianne Kniss.

But that all changed when Columbia Basin Trust funded a local history project for the Beaver Valley and area.

Local researcher Anna Reeves conducted more than 100 interviews, collected more than 350

photos, and prepared a 250-page report entitled Tracks of the Beaver Valley and Pend d'Oreille.

"We've already lost some of our history and I'd encourage all communities to start recording theirs. You can't start too soon," says Kniss, adding this local history collection will likely be of most interest to people who want to learn more about their local heritage.

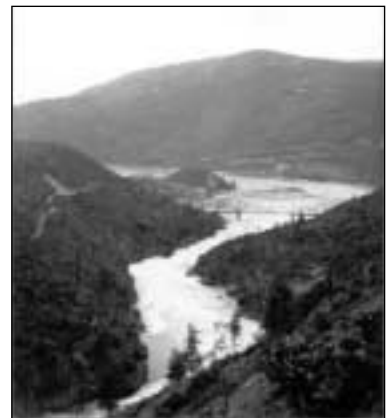
### PROJECTS FUNDED 2000-2001

**Total Funding Over 10 Years (Basin Community Initiatives and Affected Areas combined): \$945,420**

Kiwanis Club of Trail \$50,000  
Heart of Trail Society \$25,000  
Friends of Trail Library \$14,000  
Trail and District Chamber of Commerce \$10,000  
Rossland-Trail Country Club \$11,000  
Beaver Valley Cross Country Ski Society \$10,000  
Trail Horseman's Society \$20,000  
Beaver Valley Public Library \$30,000  
(See featured project)



Photo courtesy of Dixie Muir Reich



(Photo top) The first school in Fruitvale 1907-1910. The school's location was where the police station used to be on Eastview Street, before the curve going to Davis Street.

(Photo right) The Pend d'Oreille river before being dammed. Photo taken in 1939 before the new railroad bridge and Waneta dam were built.

## REGIONAL DISTRICT OF CENTRAL KOOTENAY

The Regional District of Central Kootenay's process for applying for Community Initiatives funding varies throughout the region. Deadlines for applying also vary depending on the community or electoral area. Interested groups should contact Audrey Mackenzie at the Regional District of Central Kootenay at 1-800-268-7325 or 1-250-352-6665.

## New playing fields for sports fans

**Project Proponent:** Helen Zeleznik Memorial Park  
**Project:** New playing fields  
**Funding:** \$45,000

People in Nakusp and area have a new slow-pitch diamond and soccer pitch, thanks to the local recreation commission, Nakusp Mixed Slow Pitch Society, VSA Highway Maintenance, the Village, local contractors, Columbia Basin Trust, and people who volunteered their time and services.

Project Manager Gord Marshall says the Helen Zeleznik Memorial Park is just about completed. It's just a matter of waiting for the grass to become hardy before soccer players can take to the field next season.

With \$45,000 from Community Initiatives and

the help of other funders, Marshall was able to turn an old field of weeds into an impressive playing field.

"It really enhances the area," says Marshall, adding there are at least half a dozen slow-pitch teams in the small community, and hundreds of local kids and adults who play soccer.

"We can raise about \$4,000 a year through our annual slow-pitch tournament, so it would have taken us 11 or 12 years to raise the money and do what we did with the help of the Columbia Basin Trust and others," says Marshall.

The new park is located behind the Nakusp and District Sportscomplex on Eighth Avenue. There will be an official opening ceremony in 2002.



Raking the infield at Nakusp's new slow-pitch diamond.

### PROJECTS FUNDED 2000-2001

**Total Funding Over 10 Years (Basin Community Initiatives and Affected Areas combined): \$4,366,160**

#### Electoral Area A

Boswell Memorial Hall \$4,500  
Gray Creek Hall Society \$4,000  
Eastshore Community Library Society \$500  
Crawford Bay and District Hall and Parks \$2,700  
Crawford Bay and District Agricultural Fall Fair \$1,000  
Crawford Bay School PAC \$500  
Starbelly Jam Music Festival \$1,000  
Guiding Hands Rec. Society \$495  
Riondel Historical Society \$1,700  
Riondel Youth Recreation Group \$2,377  
Wynndel Community Center \$7,228

#### Electoral Area B

Yahk-Kingsgate Recreation Society \$5372  
Friends of Kitchener \$4,292  
Arrow Creek Park Committee \$4,025  
Erickson Elementary PAC \$11,277  
Erickson Improvement District \$11,277  
Canyon Community Association \$9,398  
Lister Community Association \$15,163

#### Electoral Area C

West Creston Community Hall Society \$16,475.10  
Girl Guides of Canada, Campsite \$1,000  
Wynndel Community Center \$1,084.29

#### Electoral Area D

Mosquito Control \$88,200  
North Kootenay Lake Info Guide \$2,000

#### Electoral Area F

Bonnington Improvement District \$30,000

#### Electoral Area H

Slocan Lake Garden Society \$8,000  
Winlaw Highway Accident Man. Society \$6,000

Valhalla Summer School of Music \$1,150  
Selkirk College \$2,000

#### Electoral Area J

RDCK parking lot expansion \$20,000  
Castlegar Power and Sail Squadron/Arrow Yacht Club \$10,000  
Renata Community Group \$10,000  
Blueberry Creek Recreation Community \$566.06  
Robson River Otters Swim Club \$1512.40  
Cultural Interpretive Society (USCC) \$2,000  
Kootenay Doukhobor Historical Society \$4,000  
Pass Creek Regional Exhibition Society \$4,500  
Castlegar Golf Club \$500  
Castlegar and District Project Society \$6,500  
Kootenay Columbia Child Care Society \$7,000  
Castlegar and District Library \$8,000  
Castlegar and District Community Service \$4,000

#### Electoral Area K

Burton 18-4 Committee \$500  
Burton Community Hall \$15,283.09  
Burton TV Society \$2,850  
Edgewood Community Club \$26,309.59  
Recreation Restoration Committee \$1,000  
Fauquier Community Center \$7,100  
Fauquier and District Golf \$2,184  
Planned Parenthood \$5,000  
Homecoming 2000 Committee \$5,000  
Friends of Old Arrow Park Association \$1,000  
Arrow Lakes Search and Rescue \$30,000  
Arrow Lakes Youth Society \$39,950  
Cultural Committee of Nakusp and Area \$7,050  
Nakusp Senior Citizen's Association \$9,151  
Arrow Lakes Historical Society \$1,849  
Nakusp Volunteer Fire Brigade \$23,647.62  
Nakusp Steering Committee \$700

Helen Zeleznik Memorial Park \$45,000 (See featured project)

#### City of Castlegar

Millennium Project \$114,000

#### Town of Creston

Creston Area Economic Development \$2,000  
Creston's Citizens on Patrol \$4,000  
Creston and District Community Resources Center Society \$2,500  
Creston Public Library Association \$3,000  
Kootenay Employment Services \$2,000  
Creston Valley Auditorium \$3,000  
Youth for Youth Society-Drive-In \$5,000  
Creston Family Literacy \$3,000  
Creston Curling Club \$3,000  
Creston Alcohol and Drug Counseling \$2,500  
Cresteramics Society For Handicapped \$7,000  
Creston Judo Club \$2,000  
Cresteramics Society For Handicapped \$1,711.97  
Creston and District Historical Museum \$2,000  
Creston and District Chamber of Commerce \$3,350  
Royal Canadian Army Cadet Corps 1746 Parent Committee \$3,000  
Town of Creston \$4,800

#### City of Nelson

City of Nelson Lakeside Sports Field \$90,000  
Earth Matters \$10,000  
Nelson Music Festival Association \$9,949  
Nelson Rowing Club \$10,000

#### Village of New Denver

Slocan Rads \$700  
Slocan Valley Cycling Club \$1,200  
New Denver Reading Center \$550  
Valhalla School of Music \$430  
Slocan Lake Arena Society \$240  
Slocan Lake Early Learning Society \$220  
New Denver Hospice Society \$420

#### Village of Silverton

Village of Silverton Memorial Hall \$3,084

# DELIVERY OF BENEFITS Sector Initiatives

## ARTS, HERITAGE AND CULTURE

# Cultural diversity flourishes in the Basin

### Funding: \$200,000

Columbia Basin Trust, in partnership with the Columbia Kootenay Cultural Alliance (CKCA), is delivering funding to arts, culture and heritage in the Basin.

Working with community arts councils, individual artists, performers, heritage workers and cultural organizations, the goal of the Columbia Kootenay Cultural Alliance is to build long-term sustainability for artists and to strengthen and support arts, cultural and heritage organizations.

The CKCA offered six programs during 2000-2001 with \$200,000 in CBT funding.

**Funding Support to Communities Program** helps build capacity and strengthen community arts councils. Each arts council receives \$5,000 to fund community arts, culture and heritage projects. This program provides funds directly to artists, heritage and culture workers, and helps to raise awareness of artists belonging to and being interpreters of Basin culture.

**Overflow Funding Support to Communities Program** provides additional support to the Funding Support to Communities Program. An additional \$10,000 is allocated for communities with large cultural activity.

**Special or Developmental Project Support** assists community arts councils, arts and heritage organizations or venues with special or developmental projects. Under this program arts councils are eligible to receive up to \$2,000 towards developing their organizational structure. This program also assists with capital funding needs of up to \$3,000 for arts and heritage organizations or venues.

The **Touring Assistant Program** allows Basin productions, shows or workshops to receive up to \$3,000 to tour the Basin.

The **Arts and Heritage Mentoring/Master Classes Program** is available to individuals or groups and provides up to \$1,000 in funding to arts, culture and heritage mentoring or master classes to community members.

In 2000-2001, a Basin Cultural

Conference, an opportunity for artists, heritage and cultural workers to come together for professional development workshops, share project ideas, and network, was held in Revelstoke.

This year, the Developmental Program changed to Capital Funding and a new program, Arts Council Development, was implemented. The CKCA also started ArtsSmarts, which

funds artists-in-the-classroom activities in schools. All began funding projects in the fall of 2001.

The 2001 Basin Cultural Conference is being hosted by the Fernie and District Arts Council October 12-14.

**Applying for 2002-2003 funding**  
The CKCA will be accepting applications for the 2002-2003 funding cycle in early 2002. Watch for more informa-

tion in Basin newspapers or on CKCA's website. Funding applications for all programs are adjudicated once a year by the CKCA.

*Applications can be picked up at any Columbia Basin Trust or Basin arts council office. You can also contact the CKCA at 1-877-505-5505 or visit the website at [www.basinculture.com](http://www.basinculture.com).*

## Students embrace theatrical legends

**Project Proponent:** Yahk Youth Theatre Group

**Project:** Yahk Youth Puppeteers

**Funding:** \$860

*The Yahk Youth Theatre Group's hand puppet presentations act out First Nations legends "from a long time ago when birds and animals could talk and there were giants on the earth." They tell the story of "How Kucac, the Chipmunk Got Her Stripes" and "How Bear Lost His Tail." They are legends and lessons to remind individuals of what happens when we tease and trick each other.*

The Yahk Youth Theatre group, led by Nicola Finch, has developed a theatrical presentation of two First Nations legends using hand puppets, giant puppets, and live performers.

"One of the main reasons for starting this group was to give local youth hands-on work experience and produce something really unique and educational to share with our community," says Finch.

Finch's 18-years of experience as an actor, director, theatre instructor, and her love of the theatre is what encouraged her to develop this project.

Finch had first heard the legends when Chief Chris Luke of the Lower Kootenay band visited Yahk Elementary School as part of the research they were doing for a giant puppet production called *Salmon's Dream*. After hearing and seeing how enchanted the students were, she knew the legends would make an impact.

She began writing *"How Chipmunk Got Her Stripes"*

after applying and receiving funding through the Support to Communities Through Community Arts Councils Program.

It was an ambitious project, involving several youth, 11 to 13 years old, who were all new to theatre work.

"Getting ready for the production required hundreds of hours of preparation and rehearsal time, but the hard work was well worth it," says Finch. "We now have a storeroom full of parade puppets, a giant backpack puppet, hand puppets, masks and decorations. When the call goes out for Yahk Youth Puppeteers, our entire elementary school and community responds with enthusiasm."

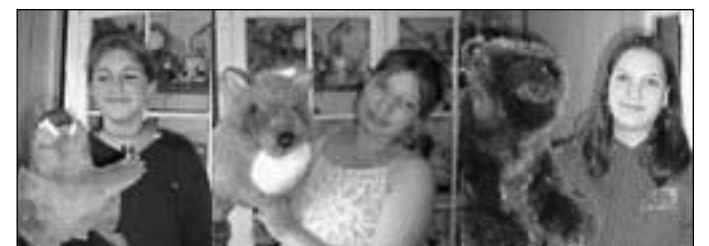
The first public presentation was held in late

August at the Community Showcase in Yahk. The group also participated in the Creston Valley Blossom Festival Parade, the Yahk Kingsgate Parade and the Starbelly Jam in Crawford Bay.

Finch is optimistic about future performances and hopes to tour the legends at fairs and festivals in the future.



Yahk Youth Theatre group performing with one of the giant puppets.



Puppeteers Michelle Smith, Mimi Abney and Shawnee Cotton.

### PROJECTS FUNDED 2000-2001

#### COMMUNITY FUNDING

**Ainsworth**  
Ainsworth Historical Society \$3,200  
**Argenta**  
Charles Finn -novel \$500  
**Castlegar**  
Child Care Society \$1,575  
Kootenay Gallery \$1,575  
Cultural Interpretive Society \$1,000  
Doukhobor Historical Society \$1,000  
**Cranbrook**  
Symphonie of the Kootenays \$500  
Souled Out Arts Society \$500  
Composers Festival \$500  
Clay Therapy Workshops \$300  
Friends of Fort Steele \$2000  
**Creston**  
Creston Historical Society \$1,000  
Yahk Youth Theatre \$860  
(See featured project)  
Starbelly Jam Music Festival \$1,140  
Heritage Theatre Society \$1,000  
Creston Concert Society \$1,000  
Mobile Blacksmith's Shop \$700  
**Fernie**  
Art Station Gallery \$2,129  
Heritage Walking Tour \$1,750  
Outreach Project \$2,100

**Golden**  
Painting/Printmaking Class \$1,200  
Don Konrad Watercolors \$700  
**Moosic Masters** \$1,200  
Golden Players Mousetrap \$700  
Enid Petherick-Landscapes \$700  
**Invermere**  
David Thompson Project \$1,800  
**Kaslo**  
M.A. McKague-novel \$100  
**Kimberley**  
Blacksmithing Workshops \$2,300  
Kimberley Community Band \$950  
Bluegrass Association \$950  
**Nakusp**  
Music in the Park \$100  
Storytelling for Children \$300  
Nakusp Fall Fair \$100  
A.L.A.C. computer training \$900  
Arrow Lakes Historical Society \$100  
Hills Garlic Festival \$500  
**Nelson**  
Faces and Places of Nelson \$1,200  
Community by Design \$1,500  
Shakespeare in the Park \$800  
Marionette Show \$1,500  
Silviculture Sculpture \$1500  
Inner Greenovel \$1,000

Nelson Youth Choir \$1,200  
Amy Fergusson Institute \$3,000  
**New Denver**  
Hidden Garden Gallery \$1,200  
Slocan Lake Garden Society \$100  
**Revelstoke**  
Project Feasibility Study \$2,500  
Forestry Museum Society \$2,700  
**Rosland**  
Columbia Writers Studio \$900  
Claymation Classes \$1,350  
Attention Deficit Film \$2,500  
Adventure Lifestyle Filmfest \$2,250  
**Salmo**  
Library Video Collection \$800  
Salmo Theatre \$500  
Robert Minden Duo \$1,000  
Shenango Choir \$750  
Youth Mural Project \$1,000  
**Silverton**  
Bringing Images to Light \$1,500  
Valhalla School of Music \$1,250  
Silverton Gallery 25th \$200  
**Sparwood**  
Youth Mural Project \$450  
**Winlaw**  
Heritage Theatre Series \$3,000  
Songs from the Vortex \$1,000  
Must Make Art Co. \$500

**Valemount**  
Community Choir \$685  
Valemount Choral Group \$810  
Painters Postcards \$970  
Interpretive Walking Tour \$1,785

**SPECIAL PROJECTS**  
Basin Festival Calendar, Nelson \$2,550  
Grant Writing publication, Nelson \$5,000

**CULTURAL CONFERENCE 2000**  
Revelstoke Arts Council \$40,000

**DEVELOPMENT ASSISTANCE**  
Fernie Arts Council \$1,300

**CAPITAL ASSISTANCE**  
Argenta Community Center \$3,000  
Silverton Gallery \$3,000  
Fernie Arts Station \$3,000  
Arrow Lakes Arts Council \$1,350

**TOURING ASSISTANCE**  
Vi Plotnikoff (literature) \$2,000  
Symphonie of the Kootenays (music) \$1,500

Peter Christensen (literature) \$2,000  
Golden Artists (visual art) \$1,000  
Rylan Kewen (music) \$1,500  
Pauline Lamb (music) \$1,500  
Tamasine Drisdale (dance) \$2,000  
Richard Rowberry (theatre) \$1,000  
Mushana Marimba (music) \$1,500  
Thurs. Painters (visual art) \$1,000

**MENTORING**  
Kyra Sokoa \$1,000  
P.A.C.K. \$1,000  
Kootenay Gallery \$1,000  
Cultural Interpretive Society \$1,000  
Melanie Boyd \$1,000  
Ann Alma \$1,000  
Hipnotics \$1,000  
Centre 64 \$1,000  
Kootenay Storytelling Festival \$1,000  
W.E. Graham School \$1,000

**TOURING ART SHOW**  
A touring visual art show featuring Basin artists selected to attend the 2001 B.C. Festival of the Arts (18 Basin Communities) \$18,000



# DELIVERY OF BENEFITS Sector Initiatives

## SOCIAL

# Encouraging the development of healthy children

## Early Childhood Supports Program

**Funding: \$287,000**

The Early Childhood Supports Program assists families in significantly enhancing the skills and resources needed to help children reach healthy maturation.

The program increases the ability of communities to work together to reduce the risk to children under the age of six years and increases awareness about the value of supporting children in their earliest years.

Arrow and Slocan Lakes

Community Services has been the delivery agent for the Early Childhood Supports Program for the past two years.

"Providing support to families with young children and encouraging the development of healthy children can help

prevent future problems for children," says Louise Wall, administrator of Arrow and Slocan Lakes Community Services. "The Columbia Basin Trust is giving communities the opportunity to have a positive impact in early

childhood development."

**Project Proponent:** Shuswap First Nations Band  
**Project:** Aboriginal teachings  
**Funding:** \$47,928

The Shuswap First Nations Band in Invermere is one of 10 projects that is an example of how this program is benefiting children. The Band received \$47,928 through the Early Childhood Supports Program in 2000 to integrate aboriginal teachings and local culture into the daily routines of children at the local day care.

The day care staffed two volunteer Elders who passed

on the traditions of their culture to the Band's children. Some of these teachings included traditional language, cooking, and use of native plants. Funding also assisted with capital costs of purchasing playground equipment.

The Early Childhood Supports Program will continue through until 2002-2003. All successful projects must demonstrate that they will provide significant benefit to the residents of this region.

Contact CBT Community Liaison Doug Switzer at 1-250-265-9936 for more information on how to apply for funding in 2002-2003.

PROJECTS FUNDED 2000-2001	
Salmo Family Support Program, Salmo	\$15,965
Kimberley Gymnastics Club Preschool Program Enhancement	\$3,000
Parent Group - Early Learning Canada, Valemount	\$6,970
Capital Project Early Childhood Supports Centre, Slocan Valley	\$24,000
Shuswap Children, Invermere	\$47,928 (See featured project)
Kootenay Children's Festival, Cranbrook	\$2,300
Castlegar and District Family Resource Centre, Castlegar	\$33,486
Family Literacy Programs in the Basin (various communities)	\$54,000
Regional Child Care Council Project, West Kootenay	\$27,000
Childcare Planning in the East Kootenay: A Blueprint for the Future, East Kootenay	\$19,373

## FIVE-YEAR PLAN FOR SOCIAL PROGRAMS

Columbia Basin Trust's Social Sector Steering Committee has established five-year funding cycles for programs through to March 2006. Applications for funding in these programs are accepted by Columbia Basin Trust year round. However, selection for project funding takes place once a year. Watch CBT's website or local newspapers for information about application deadlines.

In addition to renewing funding for the Early Childhood Supports Program through to March 2003, Columbia Basin Trust launched the Families Program in 2001. The Families Program supports activities and projects that provide resources to maintain and strengthen the health and safety of families in the Basin.

A Youth Program is scheduled to begin funding projects in 2002. Information on the Youth Program will be available in the early part of 2002.

FIVE-YEAR PLAN FOR SOCIAL PROGRAMS					
Program	2001-2002	2002-2003	2003-2004	2004-2005	2005-2006
Early Childhood Supports	→				
Families	→				
Youth (starts 2002-03)		→			

## ENVIRONMENT

# Restoring, conserving the Basin environment

## Aquatic Ecosystems Restoration and Conservation Program

**Funding: \$150,000**

The Aquatic Ecosystems Restoration and Conservation Program funds aquatic habitat restoration, conservation and research, and monitoring and assessment in the Columbia Basin.

The Environment Sector Steering Committee selected the Columbia Kootenay Fisheries Renewal Partnership (CKFRP) to deliver this program in 2000-2001.

"CKFRP is dedicated to the renewal and enhancement of fish populations, fish habitat and aquatic ecosystems and we are pleased that Columbia Basin Trust has recognized this significant environmental issue," says Kenton Adreashuk, stewardship co-ordinator, Habitat Conservation and Stewardship Program (Fisheries and Oceans Canada).

For more information, contact CBT Community Liaison Kindy Gosal at 1-250-344-7015 or visit CKFRP website at [www.ckfrp.com](http://www.ckfrp.com).

**Project:** Lower Goat River Fish and Fish Habitat Assessment  
**Funding:** \$14,168

The Lower Goat River Fish and Fish Habitat Assessment project was one of several projects funded under this program that addressed maintaining healthy aquatic ecosystems.

The project involved identifying and characterizing the preferred habitat for salmonids and burbot and conducting a quantitative fish habitat assessment. This assessment included, habitat mapping and characterization, channel assessment to evaluate fish habitat conditions, channel geometry/morphology, identifying historical impacts, critical habitat, and limitations to fish production.

The project was documented in a technical report, including recommendations, associated cost estimates for potential mitigation/restoration, and enhancement measures.

"Without the cooperation of both the Lower Kootenay

Band, Goat River Residents Association, and additional funding from Fisheries Renewal B.C., this initiative would not be possible," says Kenton Adreashuk, stewardship co-ordinator, Habitat Conservation and Stewardship Program (Fisheries and Oceans Canada).



PROJECTS FUNDED 2000-2001		
Lower Sand Creek Fish Habitat Restoration - Phase 1	\$8,180	Camp Creek kokanee spawner assessment
Engineering review of Blueberry Creek Fishway	\$350	\$925
Norns Creek Rehabilitation - Phase 2	\$350	Lower Goat River Fish and Fish Habitat Assessment
Upper West Arm of Kootenay Lake kokanee conservation and enhancement plan	\$4,500	\$14,168 (See featured project)
Salmo bull trout spawning platform design and telemetry	\$5,000	Slocan River Habitat and Population Assessment
Wolf Creek restoration and utilization assessment	\$4,600	\$4,130
Slocan Lake Limnological assessment	\$1,300	Westslope Cutthroat Trout Conservation Project: Research, Monitoring and Assessment
		\$13,800
		Joseph Creek Restoration - Year 2
		\$8,741
		Gerrard Rainbow Trout - Off-Channel Habitat Assessment
		\$8,800
		Lake Revelstoke Winter Creel Study
		\$3,900
		Canoe Valley Culvert Assessment
		\$7,532
		Lardeau River Gerrard Rainbow Juvenile Assessment
		\$3,000
		Strategic Planning for the Upper Columbia and Salmo-Pend d'Oreille River watersheds
		\$8,000
		Columbia Kootenay Fisheries Renewal Partnership workshops
		\$3,300
		Community Support, Project Monitoring and Evaluation
		\$22,324



# DELIVERY OF BENEFITS Sector Initiatives

## ENVIRONMENT

# Magic's happening for school students

### *Ecosystem Awareness Education Program*

**Funding: \$50,000**

Columbia Basin Trust's Ecosystem Awareness Education Program aims at promoting a greater understanding of Columbia Basin ecosystems to



Magic Basin Field Trips give students a hands-on classroom experience in the great outdoors.

school-aged children. Columbia Basin Trust's program sponsors the Magic Basin Field Trip Ecosystem Awareness Program, an East Kootenay Environmental Society (EKES) project.

Capitalizing on the popularity of J.K. Rowling's "Harry Potter", the field trips provide elementary school children aged 9-13 years (Grades 4-7) throughout the Basin, the opportunity to discover Basin ecosystems through a dynamic, enriching experience that complements classroom curriculum.

The program offers teachers of Grades 4-7, a curriculum-based program that can be linked to the Integrated Resource Package topics for Life Sciences.

"The biggest impact the program has on students is building their awareness of ecosystems, teaching them stewardship ethics, and respect for their environment," says Lee-Anne Walker, project co-ordinator and interpreter for East Kootenay Environmental Society. "The field trip connects children with their environment and it is very exciting to watch their reactions when they actually touch, see, and experience an ecosystem in their backyard."

During the 2000-2001, 4,475 elementary school children took part in EKES's Magic Basin Field Trips to wetlands, grasslands, forests, and old growth forests.

With the help of knowledgeable interpreters from around the Basin, students are introduced to natural functioning ecosystems by participating in nature's magic tricks, scavenger hunts, dip netting in a wetland, and micro hikes in the forest.

"The opportunity for students to go outdoors and experience the ecosystems first hand is one of the best parts of the Magic Basin Field Trip," says Gail



Pidgeon, a Grade 4 teacher from Frank J. Mitchell School. "This program is a perfect fit with the curriculum and the interpreters used interesting strategies, activities and games to engage students."

The Magic Basin Field Trip is funded in partnership with Columbia Basin Trust, the Vancouver Foundation, and with early seed money from Tembec's Environmental Fund.

For more information on the Magic Basin Field Trip Ecosystem Awareness Program contact EKES at 1-250-427-9325 or visit [www.ekes.org](http://www.ekes.org) on the Internet.

## Preserving natural wildlife environments

### *Terrestrial Ecosystem and Restoration Conservation Program*

**Funding: \$150,000**

As part of the Columbia Basin Trust's Environmental initiatives, the Terrestrial Ecosystem and Restoration Conservation Program helps realize the goal of maintaining healthy ecosystems in a naturally functioning state and to improve the functioning of those that have been altered and degraded.

A variety of terrestrial projects are funded through this program including wildlife habitat enhancement, ter-

restrial ecosystem research, and wildlife species monitoring/research.

The Environment Sector Steering Committee is in the process of developing a long-term strategy that will provide future direction for terrestrial program funding by Columbia Basin Trust.

**Project:** Restore monitoring of cougar ecology  
**Funding:** \$5,000

In 2000-2001, Columbia Basin Trust, in partnership with Columbia Basin Fish and Wildlife Compensation Program and BC Environment, funded a cougar ecology and predation study in the South Selkirk Mountains south of Nelson, B.C.

"The goal of this study is to develop and implement measures to reduce or reverse the losses of caribou and mule deer due to cougar predation in the South Selkirk Mountains," says Ross Clarke, project co-ordinator.

"The first part of this study involves monitoring and researching cougar population and growth, habitat assessment and use, prey selection, and general ecology."

Cougar tracking is carried out by local houndsmen from the Nelson, Castlegar, Trail, and Creston area. The cougars are ear-tagged, radio-collared and checked for general health condition.

As predators of caribou and mule deer, the study looks at the long-term effects this predator-prey system has on the terrestrial ecosystem.

## Involving the community

### *Community Environmental Stewardship Program*

**Funding: \$100,000**

Columbia Basin Trust's Community Environmental Stewardship Program promotes environmental stewardship, public education and awareness through community involvement. The program helps build understanding, abilities and skills for informed decision making through education and active involvement in stewardship activities in both aquatic and terrestrial ecosystems.

**Project Proponent:** Rocky Mountain Trench Natural Resources Society  
**Project:** Restoring fire-maintained ecosystems  
**Funding:** \$14,000

The Rocky Mountain Trench Natural Resources Society felt there was a need to increase public awareness and education of restoring fire maintained ecosystems.

"Seventy years of active fire suppression in the Rocky Mountain Trench resulted in an invasion of conifers and changes to the ecology of this zone," says Maurice Hanson, co-ordinator. "The greater the public understanding of the fundamentals of restoring fire maintained ecosystems, the greater the support that can be expected."

The goal of this project included raising awareness

#### PROJECTS FUNDED 2000-2001

Earth Matters Community Stewardship Program, Nelson \$20,000  
Restoring fire-maintained ecosystems in the Rocky Mountain Trench \$14,000 (See featured project)  
Ktunaxa Independent School Society Natural Resource Technology Program \$20,000  
Columbia and Windermere Lakes Osprey Survey \$6,000  
Clean Air for Creston Valley \$5,000  
Ethnobotanical Walks for students and teachers of School District #5 \$5,000  
Kaslo Forest Education Stewardship Project \$20,000  
Wild Voices for Kids, Rocky Mountain School District #6 \$10,000

among the public and special interest groups about forest fires and prescribed burns, and the effects these have on forest health, native plant species and grasslands. This project encouraged the public to become actively involved, empowered and educated in terrestrial ecosystems in their community.

The Columbia Kootenay Fisheries Renewal Partnership (CKFRP) was the delivery agent for this program during 2000-2001. Project proposals are evaluated, awarded and monitored through a process designed and managed by the delivery agent and approved by the Environment Sector Steering Committee.



Prescribed burn to maintain ecosystems.

Photo by Greg Baxter



# DELIVERY OF BENEFITS Sector Initiatives

## ECONOMIC DEVELOPMENT

# New building system is 'dome sweet dome'

### *Kootenay Product Development Fund*

**CBT Contribution: \$283,750**

The Kootenay Product Development Fund (KPDF) is a \$500,000 investment funding program, managed by the Kootenay Association for Science and Technology (KAST). The program has been designed to assist Columbia Basin companies in the development of technology-based products and processes.

Small to medium-sized Canadian companies or corporations, with less than 50 employees, which are carrying on the majority of their business in the Columbia Basin region, are eligible to apply.

Qualified applicants must have a developed business plan prior to the start of the pre-application stage.

Columbia Basin Trust and the Provincial Government provided seed money to establish the fund.

*Read on for an example of a Basin company which is using this fund to help expand an innovative product.*

**Company:** Altus Engineering  
**Product:** Dome-shaped building system

Imagine a lightweight, wooden dome. Then imagine a manufacturing plant right here in the Columbia Basin and more around the world.

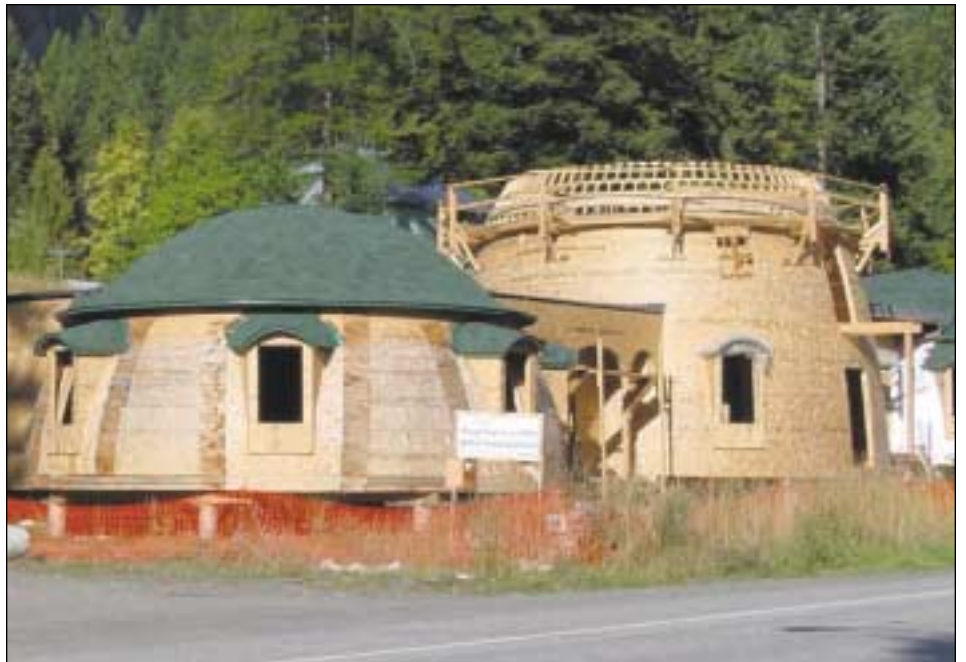
That is the plan, according to Salah Eldeib, vice-president of Altus Engineering in New Denver.

This growing firm is developing a unique dome-shaped building system that is wooden, lightweight, manufactured in sections, and can be assembled in a day.

It will cost about half of a stick-frame house, cut energy costs by up to 50 per cent, and in 500 years it will still be standing.

"The longest piece of wood we use to make the dome is 14 inches," says Eldeib adding, "We've been able to use scrap wood from Slocan Forest Products and the manufacturing costs are half of what I expected."

Altus is developing four prototypes and has hired seven people so far. It is working with the National Research Council and the University of British Columbia to develop this new building



Examples of Altus Engineering's dome-shaped building system.

system that is destined primarily for the American market for use as schools, homes, emergency shelters and more.

KAST, through the Kootenay Product Development Fund, has invested in the project.

"The financial support...was very

important because it made it easier to attract other investors and helped get things started," says Eldeib.

*For more information on the Kootenay Product Development Fund and how to access the loan funding, contact KAST at 1-250-362-7400.*

## EDUCATION AND TRAINING

# 'Read to me' project targets early learners

### *Resources for Family Literacy Program*

**Funding: \$180,000**

Columbia Basin Trust's Resources for Family Literacy Program provides resources that support learners in family literacy programs to help them overcome difficulties that interfere with their successful participation.

The Columbia Basin Alliance for Literacy, a group made up of literacy organizations throughout the Basin, is currently delivering the funding for this program.

One project funded is the Books for Babies program, which encourages early childhood literacy.

"Research indicates when parents and children work together to improve their reading, writing, and math skills, their motivation is increased and they are more successful," says Leona Gadsby, a regional literacy co-ordinator for the Columbia Basin Alliance for Literacy. "One of our goals with the Book for Babies Program is to increase parents' awareness of the importance of early literacy and pre-literacy skills."

Approximately 1,950 newborn babies in the Basin received a literacy kit last year.

The Books for Babies literacy kit comes in a canvas bag which includes one or two books, a t-shirt, and

#### PROJECTS FUNDED 2000-2001

Castlegar Family Literacy	\$10,220
Nakusp Family Literacy	\$10,220
Trail Family Literacy	\$9,950
Nelson Family Literacy	\$9,543
Slocan Valley Family Literacy	\$9,882
Revelstoke Family Literacy	\$10,220
Windermere Valley Family Literacy	\$10,526
Golden Family Literacy	\$11,238
Cranbrook Family Literacy	\$11,238
Fernie Family Literacy	\$9,950
Kimberley Family Literacy	\$10,525
Creston Family Literacy	\$10,220
Valemount Family Literacy	\$9,068

local community resource pamphlets.

*For more information contact CBT Community Liaison Jean Terlesky at 1-800-505-8998 or visit CBT's website at [www.cbt.org](http://www.cbt.org).*

*Columbia Basin Trust thanks the Canadian Mental Health Association of the East Kootenay for administering this program in 2000-2001.*



Columbia Basin Trust program targets improving literacy skills in the Columbia Basin.

Photo courtesy Kimberley Family Literacy

## ECONOMIC DEVELOPMENT

# A notion of an idea

### *Basin Business Advocates Program*

**Funding: \$440,000**

The Basin Business Advocates Program was introduced in October 2000 to assist businesses by providing access to a business advocate who offers free counseling and advice.

The business advocates are a team of experienced business people from a variety of backgrounds who work one-on-one with businesses.

The program includes completion of a business assessment report outlining key issues and recommendations for the business. A specialized consultant may be contracted on a business's behalf to address the needs identified by an advocate.

Monica L'Heureux, owner of The Wooden Thimble worked with a Golden business advocate after hearing about the program from a friend.

"I wanted to get some professional advice about expanding my business," says L'Heureux.

L'Heureux moved back to Golden and opened The Wooden Thimble in 1997 after completing her diploma in Fashion and Design Technology from Kwantlen College.

The Wooden Thimble began as a fabric store and custom sewing shop and has since turned into a quilt shop offering fabric, notions, PFAFF sewing machines, and quilting courses.

After completing the initial business assessment, the business advocate recommended a local consultant prepare a complete business plan.

"I had changed the focus of the store quite a bit since 1997," says L'Heureux. "The business plan was extremely valuable in helping me re-direct and re-organize, as well as see the complete financial picture of my

business. The consultant I worked with had a lot of experience in retail, had lots of energy, and was really enthusiastic about my business.

"Overall, this program was a very positive experience," adds L'Heureux. "If my business would have had to pay for this advice, it just wouldn't have happened."

The Basin Business Advocates Program is delivered by Steele O'Neil and Associates in Cranbrook.

*Business owners in the Columbia Basin interested in participating in the program are encouraged to contact Steele O'Neil and Associates at 1-250-489-4180 or CBT Community Liaison Patty Bossort at 1-250-365-6633.*



Monica L'Heureux of The Wooden Thimble accessed the Basin Business Advocates Program to create a business plan.

*Economic Development programs continued on Page 18.*



# DELIVERY OF BENEFITS

## Basin Initiatives

Basin Initiatives is another of Columbia Basin Trust's three main funding envelopes. It is intended to be responsive to needs which are Basin-wide and beyond the funding criteria of the other two initiatives. In addition to the programs funded below, Basin Initiatives has funded Columbia Basin Trust's ongoing partnership with the Royal B.C. Museum's Living Landscapes-Columbia Basin program. More information on Living Landscapes, which explores and preserves Columbia Basin's cultural and natural heritage, is available on the Internet at [www.livingbasin.com](http://www.livingbasin.com).

# Communities gain from youth program

Youth Links is a seven-week program for youth ages 17-19 that takes place during the summer.

Two groups of 10 travel the Basin taking a hands-on approach to work and educational activities. Each community project or activity is designed to teach youth new skills, and to expose them to new experiences, as well as add benefits to Basin communities. Youth also learn about teamwork, leadership and responsibility.

### YOUTH LINKS

**Funding: \$150,000**  
**Number of Participants: 20**

"Youth Links gives participants an opportunity to explore social, environmental, and economic issues in the Columbia Basin region," says Freya Zaltz of Earth Matters, a youth organization which partnered with the Salmo Watershed Streamkeepers' Society to deliver Youth Links 2000.

The Columbia Basin Youth Links 2000 Program began on July 10 at Meadow Mountain Lodge where 20 youth and the program co-coordinators participated in a one-week orientation session.

Then the two groups headed off for six-weeks to take part in community projects which included:

- Working on a native botanical garden project at the Invermere hospital.
- Volunteering at Street Fest in Nelson.

- Assisting Earth Matters with improving its community garden spaces.
- Restoration of a historic trail in Edgewater and helping to repair an 80-year-old community irrigation flume.
- Painting Silverton's historic community hall.
- Painting railway cars in Revelstoke.
- A variety of community service work in Golden.

At the end of the seven weeks, participants are expected to share their experiences by giving presentations to organizations or schools in their home communities.

Here's what some of the Year 2000 participants had to say:

*"On Wednesday we went up the Balu Trail in the Rogers Pass. We saw beautiful mountains, glacier water, clear skies, good company, lots of hiking, furry marmites, gained knowledge of plants, one incredible view, more blisters, bear territory, and snow..."* Chelsea Raney

*"These last two weeks have been amazing. Everyone on the program is really awesome people, and I'm lucky too have met them all."* Gillian Heagy

*"Well I am stoked on this program and it is the best thing that I have done in my life."* Nicole Rodrigues



Youth Links 2000 Orientation Crew.

## Youth Links 2000 participants

Aimee Paine - Nelson  
Meaghan Skerik - Cranbrook  
April Macri - Montrose  
Gillian Heagy - Robson  
Jeffrey Zurek - South Slokan  
Matthew McCole - Castlegar  
Johanna Markin - Castlegar  
Chelsea Raney - Salmo  
Brahm Thexton - Nelson  
Janel Clarke - Cranbrook

June Smith - Crescent Valley  
Jennifer de Medeiros - Trail  
Amanda Bold - Castlegar  
Krista Pighin - Cranbrook  
Nicole Rodrigues - Castlegar  
Leland Bjerg - Slokan  
Stoya Macleod - Rossland  
Derrick Stevens - Nelson  
Keiko Devaux - Winlaw  
Jason Hill - Rossland

To learn more about the Youth Links program contact CBT Community Liaison Patty Bossort at 1-800-505-8998 or visit the website at [www.cbt.org](http://www.cbt.org)  
People interested in applying for Youth

Links for the summer of 2002 should contact Mia Gardiner of Earth Matters at 1-250-352-2140. Applications will also be available at CBT offices and on the website in the spring.

## A wealth of information

In 2000, Columbia Basin Trust contributed \$150,000 in funding to the Basin Information Network (BIN) initiative.

BIN is a vision of an association of Basin-based organizations acting together to provide free, centralized, universal access to information about the Basin for all residents and organizations.

While the BIN might collect, store, point to, and disseminate information, it is about empowering individuals, organizations, and communities to make informed decisions about their development by providing the tools necessary to share, access, and understand information about the Basin.

Columbia Basin Trust is working closely with educational institutions, economic development agencies and the private sector to explore the many opportunities a Basin Information Network would create.

"By sharing into one central place, organizations can begin to look at the region, and their place in the region, holistically," says Matt Wenger, Columbia Basin Trust's Information Technology Director. "We can all benefit from having a 'bigger picture' view when making decisions."

Columbia Basin Trust has funded the BIN for the following reasons:

- The Columbia Basin is a region with limited resources. Organizations or individuals can-

not afford to duplicate each other's work. By creating BIN, duplication is minimized.

- Organizations have limited resources. They can't afford to spend extra money or time tracking down and obtaining information needed to make decisions.

Currently, due to the "big three" problems of access to information (affordability, availability, usability), organizations are forced to make many decisions based on incomplete information.

A BIN can potentially act as a single point of entry for information sharing. Organizations can share data once with the BIN, thus minimizing the resources spent on sharing.

Likewise, people looking for Basin information will have only one place to go.

- Organizations with a lot of data are already entering into data-sharing agreements with each other. By moving this process into a quasi-public organization, a BIN can promote the values of equal access for all.
- Organizations would like to be more efficient and effective. By automating the flow of information around a community via a central information agency, organizations can significantly reduce if not entirely negate information waiting periods.

For more information about the BIN, contact CBT Information Technology Director Matt Wenger at 1-800-505-8998.

### BASIN INFORMATION NETWORK

**Funding: \$150,000**



(Above) Youth Links 2000 tours the Revelstoke Dam.  
(Below) A Youth Links' participant constructs a picnic table pad.





# Advancing telecommunications

Columbia Basin Trust is actively involved in an effort to bring affordable, advanced telecommunications services to every community in the Basin.

The Columbia Mountain Open Network (CMON) Inc. is a not-for-profit corporation, created by a partnership of organizations, working to improve the state of telecommunications in the region.

Current members include Columbia Basin Trust, the Kootenay Association for Science and Technology, the Science and Technology Association of the Rockies, and the Revelstoke Communications Technology Committee.

"In today's information-based society the quality of life is linked to the widespread availability of telecommunications services at affordable prices," says Columbia Mountain Open Network Chief Executive Officer Jeff Roberts. "There are few aspects of life in the Basin that cannot be improved through the use of an advanced telecommunications system. The region's economy, education system, healthcare, government services, opportunities for youth, and even the environment will be enhanced with the provision of improved telecommunications services."

The Columbia Mountain Open Network is the

result of several years of study of the telecommunications needs of the residents of the Columbia Basin and careful analysis of similar community network projects throughout North America.

Columbia Basin Trust and the CMON believe the people of this region need to create their own telecommunications infrastructure in order to ensure the needed services are available now and in the future.

## TELECOMMUNICATIONS NETWORK

**CBT Funding: \$642,000 (to date)**

During its first year, CMON plans to:

- Establish a Board of Directors that reflects the interests of residents, businesses, institutions, and community groups throughout the region.
- Complete a detailed engineering study and business plan.
- Obtain the necessary licensing and permits to build the network.
- Raise the funds to build the network.

The Columbia Mountain Open Network vision is to create a community-controlled network that offers data communications services at prices competitive with those in the large urban centres.

Some of the benefits to communities with advanced telecommunications are:

### Improved/Broadened Education Facilities

Improved telecommunications will benefit all levels of education within the region.

- Primary, secondary and post-secondary education services will be enhanced through the availability of on-line courses, interactive learning with students in other regions, and the ability to offer world-class courses from within the region.
- Residents can upgrade their skills in their own communities instead of having to travel to larger centres. Courses will be available locally via tele-learning. This is essential to diversifying skills and participating in the life-long learning necessary in today's rapidly changing workforce.

### Better Healthcare

Access to broadband communications lowers the cost and improves the quality of healthcare in rural regions by allowing medical professionals to better communicate with each other. An advanced telecommunications network would enable Basin hospitals to offer tele-medicine, where a shared specialist receives the medical information electronically and makes a remote diagnosis.

### Improved Safety Services

Basin-wide access to 911 and cell phone coverage will enhance the ability to communicate quickly for assistance and reduce emergency response times.

### Improved Personal Communications

An improved communications system will remove the frustrations of having a cell phone call cut off or lengthy Internet downloading sessions.

"In today's fast-paced world it is more important than ever for people to stay in touch and the region needs a telecommunications system that fosters communications rather than impedes it," says Roberts.

For more information contact Jeff Roberts, Columbia Mountain Open Network, at 1-250-365-1672 or [jroberts@netidea.com](mailto:jroberts@netidea.com)

People interested in this initiative are also invited to attend the Telecom 2001 conference October 23 in Nelson where CMON plans to announce future activities.

## Youth make a difference

Columbia Basin Trust annually awards 20 Youth and Community Involvement Scholarships to graduating students in the Basin who demonstrate a high-level of involvement in their communities.

Each of the recipients receive a scholarship valued at up to \$8,000 or \$2,000 per annum for four years.

One scholarship is awarded to a student from each of the 20 Basin communities. The graduates must be registered at any post secondary institution.

### YOUTH AND COMMUNITY INVOLVEMENT SCHOLARSHIP

**Funding: \$40,000  
Recipients: 20**

The Youth and Community Involvement Scholarship assists Basin graduates in pursuing post-secondary education/training and rewards and encourages the involvement of young people in their communities.

To be selected for this award candidates must:

- Demonstrate extensive involvement within a Columbia Basin community (exemplify community spirit).

- Display a focused effort towards improving a sense of community.

- Be eligible and have applied for acceptance at a post secondary institute.

- Currently attend school within the Columbia Basin.



**Rebecca Bagan**  
David Thompson Secondary (Invermere)



**Brelin Barrass**  
Sparwood Secondary School (Sparwood)



**Denver Barrass**  
Sparwood Secondary School (Sparwood)



**JoAnna Bibby**  
Selkirk Secondary School (Kimberley)

*Co-recipients for the Sparwood scholarship*



**Tegan Boyko**  
Rossland Secondary School (Rossland)



**Catherine Callaghan**  
Salmo Secondary School (Salmo)



**Katie Carachelo**  
Revelstoke Secondary School (Revelstoke)



**Anissa Dewdney**  
JL Crowe Secondary School (Trail)



**Lyndsey Dyer**  
College of the Rockies (Creston)



**Pamela Finnie**  
Golden Secondary School (Golden)



**Cindy Harrington**  
Elkford Secondary School (Elkford)



**Anne-Marie Jamin**  
Valemount Secondary School (Valemount)



**Tyler Keraiff**  
Crawford Bay Secondary School (Crawford Bay)



**Candace Neilson**  
Mount Baker Secondary School (Cranbrook)



**LeeAnne O'Brien**  
Mount Sentinel School (South Slokan)



**Hillary Schell**  
JV Humphries Secondary School (Kaslo)



**Cody Sharpe**  
Fernie Secondary School (Fernie)



**Arsham Skrenes**  
Lucerne Secondary School (New Denver)



**Jessica St. Jean**  
Nakusp Secondary School (Nakusp)



**Aspen Switzer**  
LV Rogers Secondary School (Nelson)



**Teresa Todd**  
Stanley Humphries Secondary (Castlegar)

The deadline to apply for a 2002 scholarship is March 15, 2002. Keep an eye on Columbia Basin Trust's website or your local paper, or inquire at your school in February for more information about applying.

## Building capacity in communities

Columbia Basin Trust has partnered with the Vancouver Foundation to support the development of new community foundations in the Columbia Basin.

The Endowment Support for Community Foundations Program encourages the development of registered community foundations in the Basin.

### ENDOWMENT SUPPORT FOR COMMUNITY FOUNDATIONS

**Funding: \$100,000**

Upon meeting the requirements of the program, a Basin foundation can receive \$25,000 per year, for two years, in matching funds from Columbia Basin Trust and the Vancouver Foundation.

In 2000, Columbia Basin Trust assisted two community foundations in the Basin: the Osprey Foundation in Nelson and the Revelstoke Community Foundation.

Contact a Community Liaison in your area at 1-800-505-8998 for information about this program.



Photo by Henri Georgi

**VENTURE CAPITAL**  
**Resort offers year-round excitement**

**Company:** Kicking Horse Mountain Resort  
**CBT Investment:** \$5 million

Columbia Basin Trust invested in the first development phase of Kicking Horse Mountain Resort near Golden in 1999.

On Dec. 8, 2000, Columbia Basin Trust Board of Directors Chair Josh Smienk attended Kicking Horse Mountain Resort's official opening. The inaugural ski season for the resort kicked off with approximately 2,500 people in attendance.

The resort, which is located 14 kilometres from Golden, offers over 4,000 vertical feet, the second highest in Canada.

In the winter, skiers and snowboarders enjoy a 12-minute ride to the top of the mountain in the high-speed Golden Eagle Express Gondola.

During the summer season, the gondola continues to transport hikers and mountain bikers to several beginner, intermediate, and advanced alpine trails.

Kicking Horse also provides direct access to area activities including heli-hiking, parasailing, hang-gliding,

whitewater kayaking and rafting, sports fishing, climbing, and golfing.

The resort's first winter season was very strong with approximately 42,000 visitors to the mountain and an estimated 26,000 through the summer season.

Continuous enhancements are being made to the \$250 million Kicking Horse Mountain Resort. A new central reservation system, two new luxury suites situated at the top of Canada's highest restaurant, the mountain's first ski-in/ski-out accommodation, and several other real estate options for couples and families will be available in time for winter 2001-2002.

When the winter season starts on December 14, visitors will enjoy 26 new ski and snowboard runs, bringing the total number of runs to 68.

*To learn more about Kicking Horse Mountain Resort visit its website at [www.kicking-horseresort.com](http://www.kicking-horseresort.com).*

*For more information on venture capital investments, contact Dave Strachan, manager, investments, at 1-250-265-9935.*



(Photo Left) Kicking Horse Mountain Resort's Golden Eagle Express Gondola takes visitors on a high-speed trip to the top of the mountain where they can relax and eat at the Eagle's Eye Restaurant (below).



Photo courtesy Nic Lehoux

**VENTURE CAPITAL**  
**Destination course destined for success**

**Company:** St. Eugene Mission Golf Resort  
**CBT Investment:** \$6,765,000

The St. Eugene Mission Golf Resort on the St. Mary's Reserve near Cranbrook is a

championship, 18-hole course that is receiving rave reviews.

It is also one of many projects Columbia Basin Trust has invested in throughout the region.

"In only our second season we have surpassed projections and have been recog-

nized as one of the finest golf courses in Western Canada," says General Manager Michael Smith.

Columbia Basin Trust invested \$6,765,000 in the 7,007-yard, par-72, course.

Today the course employs 75 people on a full-time seasonal basis, and has resulted in a number of tourism spin-offs that come from attracting more people to the area.

Increased business for local hotels and restaurants is just one of the benefits that have resulted from the opening of the St. Eugene Mission Golf Resort.

The golf course is part of the Ktunaxa/Kinbasket Tribal Council's overall vision for economic development, which includes adding a hotel and casino, scheduled to open in May 2002. (CBT will not be involved in the casino).

"This project will create careers, diversify the economy and it will be a source of long-term income that will be used by the five Bands that make up the Tribal Council," says Helder Ponte, project manager.

*For more information on the St. Eugene Mission Golf Resort visit its website at [www.golfsteugene.com](http://www.golfsteugene.com).*



Photo by John Dutton

**VENTURE CAPITAL**  
**Heating up the technique of drying wood products**

**Company:** HeatWave Drying Systems  
**CBT Investment:** \$3.5 million

Columbia Basin Trust has invested \$3.5 million through equity and debt in HeatWave Drying Systems in the West Kootenay.

The funds are helping this innovative company develop its radio-wave, dry-kiln technology to the next stage of business growth and development.

HeatWave has developed a drying technology that improves efficiencies and lowers drying costs for a range of products, including large

dimensional lumber and timbers. This new drying technology can also be applied to agricultural products, plastics, pharmaceuticals and other products that require low moisture levels.



*For more information about this technology visit the HeatWave Drying Systems website at [www.heatwave.com](http://www.heatwave.com)*



REAL ESTATE

# Columbia Basin Building opens

Columbia Basin Trust officially opened the Columbia Basin Building in Castlegar May 11, 2001.

Approximately 100 people attended the opening to tour the new 30,000 sq. ft. building, which is now home to Columbia Basin Trust's Castlegar office, as well the offices of Columbia Power Corporation, and the City of Castlegar Council Chambers.

The building, which cost \$4 million including tenant improvements, is a key part of Columbia Basin Trust's investment portfolio.



Photo by Keith Cardriver

(L to R) Mike O'Connor, Mayor of the City of Castlegar; Josh Smienk, Chair of CBT's Board of Directors; and Lorne Sivertson, President of Columbia Power Corporation, officially open the Columbia Basin Building.

Columbia Basin Trust extends its sincerest thanks to the following individuals and companies for their hard work on the construction of the Columbia Basin Building.

- B.C. Buildings Corporation - Ben Minuk, Brent Warne, Jim McLennan
- Project Manager - Vic Van Isle, David Berushi
- Construction Manager - Vic Van Isle, Stewart DeFoe
- Columbia Basin Trust - Dave Strachan
- Fairbank Architects - Allan McLeod
- Consulting Engineers:
  - EMCO Engineering Ltd. - Electrical
  - Matteotti Yoneda Associates Ltd - Mechanical
  - MSS Engineering Ltd. - Structural
- Vic Van Isle Construction Ltd. - General Contractor



Columbia Basin Building located at 445 - 13 Avenue in Castlegar.

<b>Total Square Footage</b> - 30,000	Uncommitted space 4,730 sq ft
<b>First Floor</b>	<b>Total Rentable Area</b> 23,193 sq ft
City of Castlegar Council Chambers 3,453 sq ft	
Parkade - 18 parking stalls	
<b>Second Floor</b>	<b>Project Timeline</b>
Columbia Power Corporation 9,896 sq ft	May, 1999 - Project conception
<b>Third Floor</b>	June 2000 - Construction began
Columbia Basin Trust 5,114 sq ft	April 2001 - Building opened
	<b>Total Project Cost</b> - \$4 million including tenant improvements

## LOAN SYNDICATION PROGRAM

The Loan Syndication Program provides businesses in the Basin with the capital needed to help strengthen local economies. Through this program, credit unions share commercial loan opportunities, and associated risks and returns with Columbia Basin Trust. CBT's participation in any one loan syndication is up to a maximum of 50 per cent of the total amount loaned by a credit union. Syndicated loans start at \$250,000. To date, Columbia Basin Trust has advanced \$6,475,000 to this program. The overall annual rate of return to the Columbia Basin Trust for this program is 8.92 per cent. For more information about accessing the Loan Syndication Program, contact a credit union in your area.

## Program helps finance new hotel

Travelers to Golden can now stay in a new three-level, 60-room Ramada Ltd. Hotel that offers an indoor pool, hot tub and a high-speed internet connection.

This addition to Golden's list of hotels opened in September of this year and is already receiving calls from tour operators and has several long-term, corporate bookings for its two-bedroom suites.

"We expect that skiers coming to the area will also be good for business," says co-owner Bhajan Rai.

Construction of the project began in April 2001 and employed about 75 people. When

the hotel is operating at capacity in the summer, up to 20 local people will be hired.

Rai and partner Mike Dhama financed the development of the hotel through a three-way loan syndication involving Columbia Basin Trust, the Revelstoke Credit Union and the Columbia Valley Credit Union.

"This type of partnership allows credit unions to service deals of this size and nature and that means local money stays in the community," says Kashmir Dhillon, commercial loan officer at the Revelstoke Credit Union. "This is a safe and sound investment with minimal risk."

## REGIONAL LENDING PROGRAM

The Regional Lending Program helps viable businesses in the Basin with both expansion and start-up financing. Columbia Basin Trust's contribution to this lending program, which is offered through Community Futures Development Corporation, enables CFDCs to increase loans to \$250,000. To date, Columbia Basin Trust has advanced \$3.5 million to this program. For more information about accessing the Regional Lending Program, contact a CFDC office in your area.

## Clear sailing for area business

**Business:** Sunshine Houseboats

When local entrepreneurs Brant and Dianne Cullum got into the houseboat business three years ago they had never been on a houseboat.

Today they operate 10 charter houseboats on Lake Koochanusa and by next year their fleet will be up to 13.

"People thought we were crazy," says Cullum, one of the investors in Sunshine Houseboats. "Now we get 2,000 people coming to houseboat each year and it keeps growing."

With a financial loan from the Regional Lending Program, a partnership

between Community Futures Development Corporations in the Basin and Columbia Basin Trust, Sunshine Houseboats purchased another boat - the "Eagle" - which will strengthen and diversify this floating business.

"Now we can offer a time share houseboat to interested investors, as well as our charter and other services," says Cullum. "We really appreciate that Columbia Basin Trust, together with CFDC, has shown the foresight and is willing to work with small businesses like ours."

Since it started, Sunshine Houseboats, based in Cranbrook, has more than

doubled its fleet, increased its business almost seven times, and hires five people full-time during the summer.

Next year the company expects to hire up to eight people, add a restaurant to the operations, and offer Canada/U.S. international boating to its clients on Koochanusa's more than 400 kilometres of shoreline.

"We are on the frontier of tourism on the lake," says Cullum. "And tourism will surely become a predominant industry in the area."

For more information about Sunshine Houseboats visit the website at [sunshinehouseboats.com](http://sunshinehouseboats.com)



Sunshine Houseboats is set to expand its operations next year.

Photo courtesy Sunshine Houseboats

## CBT establishes power subsidiary

In September 2000, Columbia Basin Trust incorporated a new energy subsidiary, CBT Energy Inc. (CBTE), to develop and manage energy and power related projects for the purposes of creating long-term income, and bringing economic, environmental, and social benefits to the Columbia Basin.

The structure and purpose of CBTE is to ensure Columbia Basin Trust energy policies include direction from outside experts in the energy field and access to critical industry knowledge to become adept in a rapidly evolving and uncertain energy market.

### CBT ENERGY INC.

Created in  
September 2000  
Number of Staff: 2

CBTE's mandate is to develop an organization which supports the mission and vision for the Columbia Basin Trust in the energy area. To

achieve this mission, Columbia Basin Trust is moving towards the incorporation of the activities of its subsidiary power companies into CBTE's operations.

The consolidation of the subsidiary companies under CBTE will enhance the ability of Columbia Basin Trust to seek, and capitalize on, unique business opportunities in the energy industry.

"CBTE is a significant energy player within the region and can contribute to, and enhance, the diversification of the energy industry in BC.," says Ken Epp, CBTE interim chief executive officer.

CBTE is working to equip itself to fully operate in deregulating energy mar-

kets and to prepare for potential market structure changes in British Columbia.

CBTE's first priority is to ensure the timely completion, in concert with Columbia Power Corporation, Columbia Basin Trust's joint venture partner in power projects, of existing energy projects on pages 16 and 17.

Secondly, Columbia Basin Trust recognizes that long-term success is also dependent on an entrepreneurial view to developing new business opportunities that expand the scope of Columbia Basin Trust's business portfolio.

The new market provides opportunities for corporations to be creative in providing business solutions between power providers and power users.

In the future, CBTE foresees a portfolio that encompasses provision of energy from various sources and services to customers that maximize benefits from the market while containing risks.



(Above) Transmission lines.  
(Right) CBT Energy Inc. Administrative Assistant Aimee Ambrosone.



CBTE is building the needed tools to be able to evaluate and rank new opportunities rigorously at minimum cost and risk, as well as the infrastructure needed to execute these opportunities.

## Brilliant Dam - expanding the investment

In 1996, Columbia Basin Trust and its joint venture partner, Columbia Power Corporation (CPC), made their first investment and acquired the 125 megawatt Brilliant Dam on Kootenay River north of Castlegar.

Like all investments made by Columbia Basin Trust, the Brilliant Dam will become a source of long-term income that will support Columbia Basin Trust's delivery of

benefits across the Columbia Basin.

Since acquiring the Brilliant Dam, Columbia Basin Trust and CPC have undertaken a series of capital improvements to both the dam and the powerhouse.

A proposed expansion project will add 100 megawatts of generating capacity by utilizing water not needed by the existing 60-year-old powerhouse, and see a new powerhouse built

### BRILLIANT EXPANSION PROJECT

**Output:** 100 MW, 600 GW/h  
**Cost:** \$125 million- \$150 million (estimated)  
**Schedule:** Construction 2002 - in service 2005  
**Jobs:** 450 person years (estimated)

on the east shore of the Kootenay River, just downstream of the existing dam.

The expansion also involves the construction of a new water intake channel and exit.

Construction is scheduled to start in 2002, after the project has undergone an Environmental Assessment Review.

When approved, construction will create direct employment in the area and provide a number of environmental benefits such as improving downstream fish and aquatic habitat.

By reducing the amount of water spilled over Brilliant Dam each year, the project will serve to decrease the amount of air that is trapped and forced into water at the toe of the dam.

This in turn will reduce levels of total gas pressure that can be harmful to fish for many kilometres downstream.

As a second important environmental benefit, an independent study has concluded that the Brilliant Expansion will lower greenhouse gas emissions by offsetting the need for power generated by fossil fuel elsewhere in the Pacific Northwest.



(Above) At work on a turbine upgrade at Brilliant Dam.



Photos courtesy Columbia Power Corporation



Artists conceptual drawing of the proposed expansion at Brilliant Dam.



## Arrow Lakes Generating Station

### *Columbia Basin Trust/ Columbia Power Corporation's First Major Project*

Columbia Basin Trust, along with its joint venture partner Columbia Power Corporation (CPC), are building a 170 megawatt power station at the Hugh Keenleyside Dam near Castlegar.

When complete in 2002, the Arrow Lakes Generating Station will produce enough electricity to supply nearly all West Kootenay homes and small businesses.

"Power sales resulting from this joint venture investment will give Columbia Basin Trust a long-term source of income that will be used to support our delivery of benefits which bring social, economic and environmental benefits to the 170,000 people who live in the Basin," says Josh Smienk, chair of CBT's Board of Directors.

The return on this power investment has already begun.

The Arrow Lakes Generating Station project is putting more than \$53 million in wages and more than \$20 million in other spending into the regional economy during the four-year construction period. At its peak, the project employed more than 400 workers, most of them local.

The Arrow Lakes Generating Station will also result in a number of environmental benefits including the creation of new fish habitat and improvements to downstream aquatic habitat.

For more information about the Arrow Lakes Generating Station, or any of the power projects on these pages, visit CPC's website at [columbiapower.org](http://columbiapower.org).



#### ARROW LAKES GENERATING STATION

**Output:** 170 MW (2 units), 760GW/h  
**Cost:** \$250 million  
**Schedule:** In Service 2002  
**Number of People Employed  
During Construction:** Approximately 400

- ✓ Water enters the powerhouse through a 1,500-metre long approach channel upstream of the dam.
- ✓ Two 85-megawatts turbines will run in the powerhouse.
- ✓ Water returns to the Columbia River downstream of the dam.
- ✓ A 48-kilometre transmission line, under construction, will connect the project with the B.C. Hydro grid.
- ✓ The Arrow Lakes Generating Station is the first of three power development projects planned by the joint venture partners. The other two projects would see generating capacity expanded first at the Brilliant Dam and then at the Waneta Dam.



(Top) Construction of the Arrow Lakes Generating Station next to Keenleyside dam on Arrow Lake.

(Bottom) CBT, CPC, and Peter Kiewit Sons Co. hosted the second annual Community Day at Arrow Lakes Generating Station in June 2001. Approximately 1,200 people toured the site by bus and on foot.



Waneta Dam, owned by Cominco Ltd., is located on the Pend d'Oreille River just upstream from where it joins the Columbia River.

## Waneta Expansion Project

Columbia Basin Trust and Columbia Power Corporation (CPC), are planning a third project together which would see construction of up to a 380 megawatt generating station at the Waneta Dam on the Pend d'Oreille River near Trail.

In 1994, Columbia Power Corporation purchased the rights to expand generating capacity at Waneta from Cominco Ltd., the dam's owner.

Scheduled for completion in 2008, following an Environmental Assessment Review, the Waneta Expansion Project will provide ongoing revenue to Columbia Basin Trust, while creating jobs, as well as

#### WANETA EXPANSION PROJECT

**Output:** Up to 380 MW  
**Cost:** Undetermined  
**Jobs:** Estimation for 600 person years  
**Schedule:** Construction to start in 2004 - in service by 2008

economic and social benefits for people in communities across the Columbia Basin.

# Mixing a recipe for success in Kootenays



**Ariah Desilets of Ariah's Edible Creations in the Slokan Valley.**  
Photo by Ursula Heller

## Micro Enterprise Loan Program

**CBT Contribution: \$25,000**

The Micro Enterprise Loan Program through Community Futures Development Corporation (CFDC) of the Central Kootenay was a pilot project to help create employment, increase income, and provide independent living for lower income individuals.

Loans are available from \$200 to a maximum of \$5,000. Columbia Basin Trust put in 30 per cent (or \$25,000), the Province through the former Ministry of Community Development Cooperative and Volunteers, Community Capacity Building Program provided 50 per cent and CFDC the balance. CFDC Central Kootenay also contributed the investment capital. For more information contact Tom Murray, loans officer, CFDC in Nelson.

**Recipient:** Ariah's Edible Creations

For a Slokan Valley mother of three, local organic ingredients and a supportive family, mixed with \$4,000 from the Micro Enterprise Loan Program, is a recipe for success.

Ariah Desilets invested the money she was loaned

and bought enough bulk ingredients and other essentials to start her own wholesale food business that makes vegan, wheat and dairy free samosas, soups, burritos, and more.

The foods are sold at three local retailers, but in a few months she hopes to make Ariah's Edible Creations more widely available in the Kootenays, the province, and in Alberta.

The money from the program helped her get started and she says, "It's allowing me to make a better living. I'm also showing my kids that there are possibilities and you can make things happen."

For Desilets, running her own business means she can work a schedule that suits her physical limits.

"Because of scoliosis, a curved spine, I can't work eight hours in a row, but in time I hope to become more of a director in the business and less of a vegetable chopper."

Desilets uses space at the Kootenay Baker in Nelson to prepare her food products, but one day she hopes to establish a commercial kitchen in the Slokan Valley to share with other local food wholesalers.

For now she's gearing up to package her foods for a wider market and take advantage of the image of the Kootenays as a place with clean air, water and healthy food.

## FINANCIAL HIGHLIGHTS

Residents can contact the Columbia Basin Trust at 1-800-505-8998 to receive a copy of the complete Audited Financial Statements for fiscal year 2001, which were published in Columbia Basin Trust's Annual Report 2000-2001 to the Provincial Government. You can also visit CBT's website at [www.cbt.org/annual\\_report.htm](http://www.cbt.org/annual_report.htm) to download a copy.

### CONSOLIDATED STATEMENT OF FINANCIAL POSITION AS AT MARCH 31, 2001

	2001	2000
<b>ASSETS</b>		
Current	9,491,042	8,385,931
Investments		
Power projects	178,331,462	119,851,717
Income securities	30,180,714	45,242,903
Business loans	19,248,938	11,137,075
Real estate projects	3,560,582	422,322
	231,321,696	176,654,017
Other		
Commitment receivable from the Prov. of B.C.	145,773,753	83,751,621
Deferred amounts	33,368,368	3,835,911
	<u>179,142,121</u>	<u>87,587,532</u>
	<u>419,954,859</u>	<u>272,627,480</u>
<b>LIABILITIES AND NET ASSETS</b>		
Current	4,413,837	3,566,409
Long Term Debt		
Non-recourse debt of joint venture	45,777,879	46,288,291
Advance from Columbia Power Corporation	145,773,753	83,751,621
	191,551,632	130,039,912
Net Assets		
Power project investments	170,361,553	82,324,348
Non-power investments	49,139,910	47,713,282
Delivery of benefits	4,487,927	8,983,529
	<u>223,989,390</u>	<u>139,021,159</u>
	<u>419,954,859</u>	<u>272,627,480</u>

### CONSOLIDATED STATEMENT OF OPERATIONS FOR THE PERIOD ENDING MARCH 31, 2001

	2001	2000
<b>REVENUES</b>		
Net investment income		
Power projects	1,840,073	1,265,776
Income securities	2,042,680	2,553,880
Business loan	698,788	102,231
Real estate projects	11,687	7,196
	4,593,228	3,929,083
Contribution		
Province of B.C.	<u>2,000,000</u>	<u>2,000,000</u>
	6,593,228	5,929,083
<b>OPERATING EXPENSES</b>	<u>2,458,181</u>	<u>1,812,198</u>
<b>OPERATING INCOME</b>	4,135,047	4,116,885
Investment program write-downs and write-offs	2,865,026	648,371
Delivery of benefits	<u>4,248,922</u>	<u>3,173,506</u>
<b>EXCESS (DEFICIENCY) OF REVENUES OVER EXPENSES</b>	(2,978,901)	295,008



# DELIVERY OF BENEFITS

## Water Management

### A strategy for the future of the River



Photo by Janice Strong

Canoeing on the Columbia River in the Columbia Valley.

Columbia Basin Trust recognizes the economic losses and environmental effects of dam construction in the region due to the Columbia River Treaty.

Columbia Basin Trust has a task force working to develop a strategy to help ensure the management of water issues related to the Columbia River Treaty takes account of the region's interest in a range of values.

The Water Management Task Force strategy includes:

- ✓ Developing educational materials on water management for Basin residents, Board of Directors and staff.
- ✓ Being an advocate for and playing a role in decisions about regional and cross-border international water management.
- ✓ Working to improve water reservoir and dam management practices to optimize a wide range of benefits including fish and wildlife, power generation, and recreation.

- ✓ Identifying and advocating Basin residents' interests in water management agreements/treaties, such as the Columbia River Treaty, and preparing Columbia Basin Trust to participate in any reviews.

Agencies in Canada and the U.S. are working together, sharing information, and defining common interests and values which must be addressed in the future operation of the Columbia River system.

"We must work with everyone with an interest in sustaining the Columbia River in a healthy state for the future," says Garry Merkel, chair of the Water Management Task Force.

"Our approach is to involve people and organizations inside and outside the Basin in the development of a strategic approach to these critical issues."

*For more information on CBT water management initiative contact Community Liaison Kindy Gosal at 1-800-505-8998.*

#### FACTS ABOUT THE COLUMBIA RIVER

- ✓ 2,000 kilometres long
- ✓ The headwaters are near Canal Flats. It reaches the ocean at Astoria, Oregon.
- ✓ Drains a 671,000 square kilometre basin.
- ✓ Fifteen per cent of the basin or 102,300 square kilometres are in Canada.
- ✓ Fourth longest North American River that reaches the ocean.
- ✓ Humans have lived along the river for more than 10,000 years.
- ✓ It is the most hydro-electrically developed river system in the world.
- ✓ More than 400 run-of-the river dams are on the mainstem.
- ✓ Its generating capacity is estimated at more than 21 million kilowatts.
- ✓ Largest dams on the system are Bonneville (1928) and Grand Coulee (1941).
- ✓ Mica (1973) and Keenleyside dams (1968) were built on the mainstem in Canada under the Columbia River Treaty.
- ✓ The third Canadian dam built under the Treaty, the Duncan Dam (1967), is on the Lardeau/Kootenay River tributary.
- ✓ Lake Kootanusa is the upper end of Montana's Libby Dam reservoir which flooded into Canada. Libby Dam affects the flow of the Kootenay River back into Canada.
- ✓ The Kootenay River joins the Columbia River at Castlegar.
- ✓ The Columbia is a snow charged river that fluctuates seasonally in volume.
- ✓ Highest volumes between April and September.
- ✓ Lowest volumes from December to February
- ✓ Between 1860 and 1960 commercial fisheries annually harvested millions of pounds of anadromous fish. Since the early 1970s, the fish catch has dramatically declined and several species are now endangered.

*Most reference information prepared by Bill Lang, professor of History, Director Center for Columbia River History, Portland State University.*



Experiencing "low-water" on the Columbia River.

## MONITORING AND EVALUATION

# Fulfilling the plan set out by Basin residents

Columbia Basin Trust recently undertook a monitoring and evaluation project and a series of community meetings to help guide the evolution of its programs.

As directed by the Columbia Basin Management Plan, Columbia Basin Trust sought the assistance of an independent third party, Landfall Consultants, in this process.

"The objectives of the monitoring and evaluation project are to examine whether Columbia Basin Trust is delivering programs consistent with the Columbia Basin Management Plan; to examine whether the decision-making processes and administrative procedures put in place for delivering programs are consistent with the Plan; and to provide a framework for on-going monitoring and evaluation of the activities," says CEO Don Johnston.

The project, which was carried out in four phases, also provided an opportunity to talk to community members to find out how CBT activities are meeting the expectations of the people of the Basin.

**Phase One** included a review of the investment and delivery of benefits systems through structured interviews with the Board of Directors, staff, sector steering committees, local governments, and other delivery partners in the investment and delivery of benefits programs during the fall of 2000.

**Phase Two** involved meetings with the Board of Directors, staff, sector steering committees, and part-

ners during the winter of 2001 to review and refine the Phase 1 findings and to confirm the usefulness of the initial recommendations.

Having consulted with the members of Columbia Basin Trust's "family" in Phases 1 and 2, plans were put into place to conduct community meetings as part of **Phase 3** of the process.

Meetings were held in 12 communities around the Basin mostly during May 2001. The communities visited were Sparwood, Cranbrook, Invermere,

Golden, Revelstoke, Nakusp, Creston, Kaslo, Nelson, Trail, Jaffray, and Valemount.

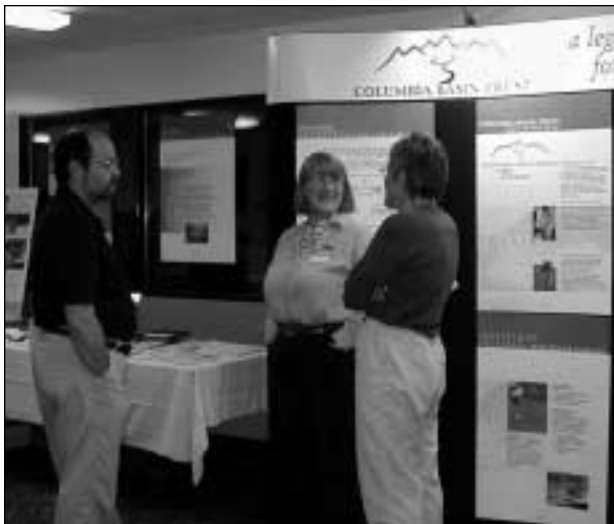
Approximately 300 people attended the meetings, which were designed with two objectives in mind:

- To create an opportunity for community members to learn more about Columbia Basin Trust and to talk with staff and directors. The community meetings included an open house with displays and brochures on all aspects of Columbia Basin Trust as well as some of CBT's partners and project proponents.
- To provide an opportunity, from a monitoring and evaluation perspective, to get feedback from project proponents who had received project funding.

"The meetings renewed our connection to the residents of the Basin and from the accounts of the people who attended they appreciated the opportunities to talk to us," says Johnston. "And we were able to identify some key policy and operations areas, which need to be addressed to ensure we continue to be responsive to the residents of the Basin."

The final phase, which is still underway, involves the development of a monitoring and evaluation system to assist Columbia Basin Trust and its partners with ongoing decision-making and renewal of plans.

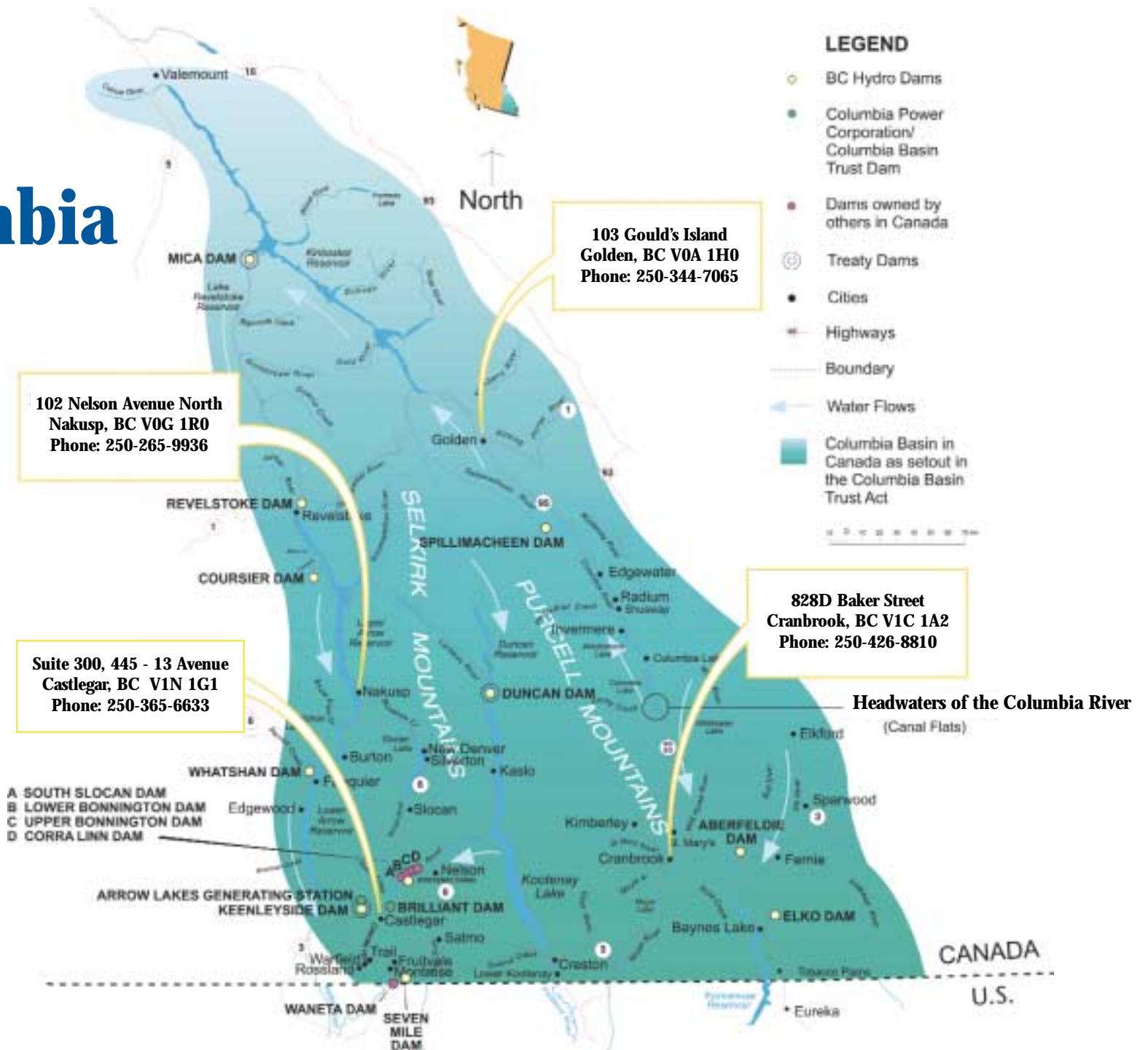
*A final report on the monitoring and evaluation process will be available to residents later this year. To get a copy, call Columbia Basin Trust at 1-800-505-8998 or visit one of our offices. A downloadable version will also be available on the website at [www.cbt.org](http://www.cbt.org).*



Jane Hutchins, CBT Manager of Operations and Planning speaks to interested residents at the Sparwood meeting.



# The Columbia Basin



## How to Contact the Columbia Basin Trust

For more information about the programs presented in this publication call:

**1-800-505-8998**

**1-250-265-2246 (fax)**

or visit the website

**www.cbt.org**

*or visit one of the offices in your area:*

**102 Nelson Avenue North  
Nakusp, BC  
VOG 1R0  
1-250-265-9936**

**828D Baker Street  
(Clock tower square)  
Cranbrook, BC  
V1C 1A2  
1-250-426-8810**

**Suite 300  
445 - 13 Avenue  
Castlegar, BC  
V1N 1G1  
1-250-365-6633**

**103 Gould's Island  
Golden, BC  
VOA 1H0  
1-250-344-7065**



## Annual Report to the Residents 2000-2001

Jody Lamb, *Editor*  
email: [jlamb@cbt.org](mailto:jlamb@cbt.org)

Rachel Elkey, *Writer*  
Lynne Betts, *Writer*

Published by  
**COLUMBIA BASIN TRUST**

phone: 250.426.8012 fax: 250.265.2246 [www.cbt.org](http://www.cbt.org)

### We Appreciate Your Feedback:

If you have any questions or comments on Columbia Basin Trust's Annual Report to the Residents or to request additional copies, please contact Jody Lamb at the Cranbrook address.

*The Columbia Basin Trust sincerely appreciates the assistance of all the organizations and individuals who helped in the creation of the 2000-2001 Annual Report to the Residents. It is the dedication to your communities, organizations, and businesses that make Columbia Basin Trust a legacy of the people.*