

1st QUARTER 2003

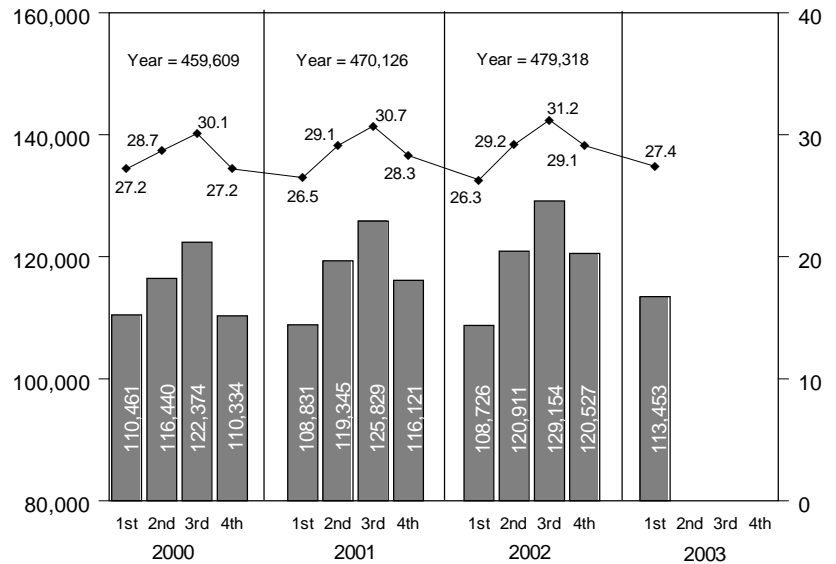
QUARTERLY CRIME REPORT

Crime in the 1st Quarter of 2003

In the first quarter of 2003, there were 113,453 *Criminal Code* offences reported in BC, 4,727 offences or 4% more than the first quarter of 2002. This number represents a 4% increase from the first quarter of 2001, and a 3% increase from the first quarter of 2000.

Figure 1 shows quarterly trends in the crime rate and the number of *Criminal Code* offences reported to police in BC. More crimes are reported in the summer months than during the rest of the year. As a result, both the rate and the number of crimes reported peaks in the 2nd and 3rd quarters of each year.

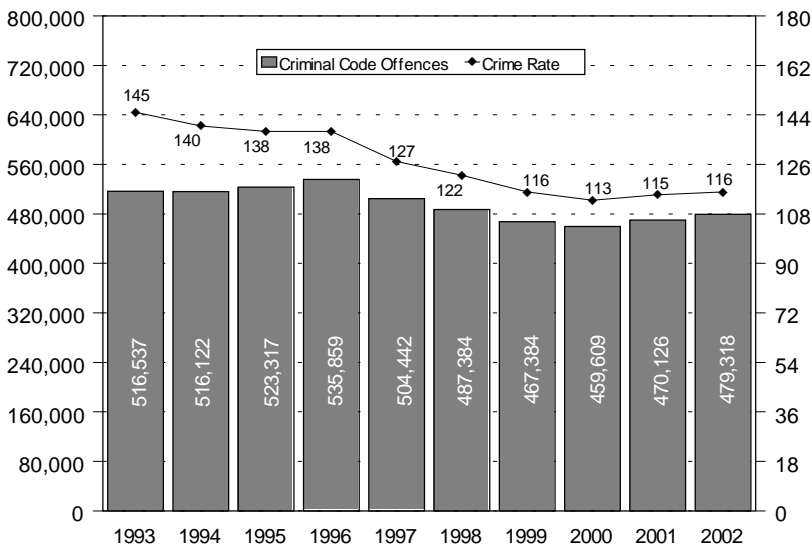
Figure 1: Criminal Code Offences in BC Reported By Quarter, 2000 - 2003



The crime rate is the number of *Criminal Code* offences reported for every 1,000 people. It is a better measure of trends in crime than the actual number of offences because it allows for population growth. In the first quarter of 2003, the crime rate was 27.4 offences per 1,000 persons. This rate represents a 4% increase from the 2002 first quarter rate of 26.3. From 2000 to 2003, the first quarter crime rate has averaged 27 offences per 1,000 persons.

CRIME TRENDS IN 2002

Figure 2: Criminal Code Offences & Crime Rate in BC, 1993 - 2002



In 2002, there were 479,318 *Criminal Code* offences reported in BC, 9,192 or 2% more than in 2001 and 4% or 19,709 more than in 2000.

The crime rate for the province was 116 offences per 1,000 persons in 2002. This represents a 1% increase from the 2001 rate of 115 offences per 1,000 persons, and a 2% increase from the 2000 rate of 113.

Figure 2 shows yearly trends in crime rate and number of *Criminal Code* offences reported to police.

CRIME TRENDS IN 2002

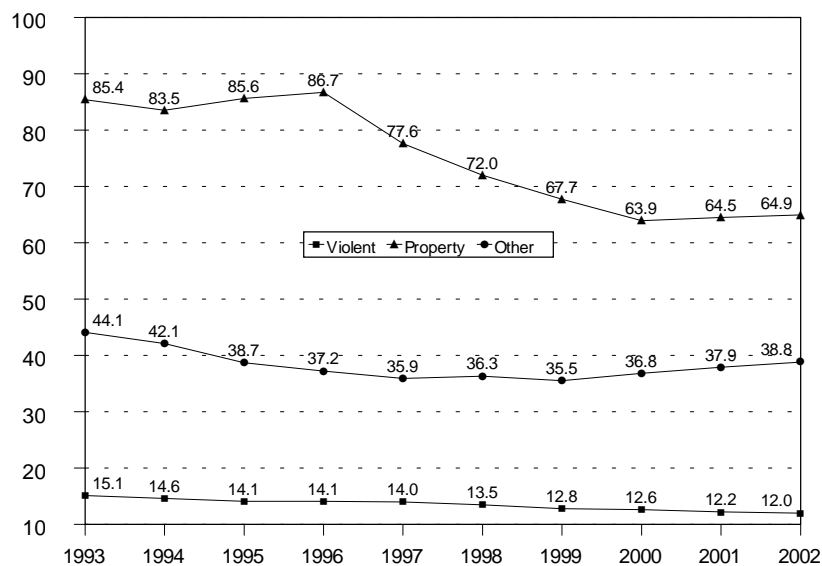
Criminal Code offences are divided into three major categories: crimes against persons (violent crimes), crimes against property and other crimes.

As shown in Figure 3, in 2002, violent crimes represented 10% of all *Criminal Code* offences reported to police, property crimes represented 56% and other crimes represented 34%. These proportions have remained relatively stable over the past decade.

Violent crimes include homicide, attempted murder, sexual offences, assault, robbery and abduction. In 2002 there were 49,844 violent offences reported in BC. This represents a decline of less than 1% from 2001. Similarly, there was a 1% decrease in the violent crime rate (from 12.2 violent crimes per 1,000 persons in 2001 to 12 violent crimes per 1,000 persons in 2002).

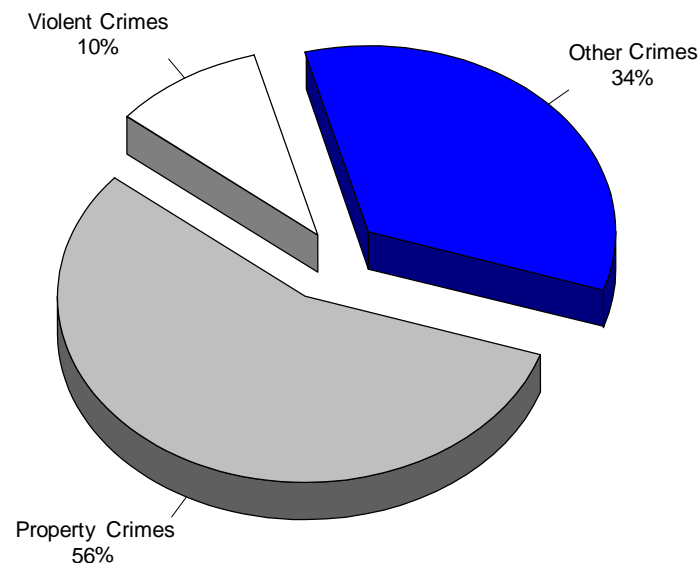
Property offences include motor vehicle theft, break and enter, fraud, theft and possession of stolen property. In 2002, police reported 268,866 property offences, an increase of slightly less than 2% compared with the 264,587 offences reported in 2001. The property crime rate rose 1% from the 2001 rate, increasing from 64.5 offences per 1,000 persons to 64.9 per 1,000 persons.

Figure 4: BC Crime Rate by Category, 1993 - 2002



The number of other crimes rose by 3% during 2002, increasing from 155,498 offences reported during 2001 to 160,608 reported during 2002. The rate of other crimes also reflected an increase, rising 2% from 37.9 crimes per 1,000 persons in 2001 to 38.8 per 1,000 persons in 2002. The ten-year trends in crime rates for the three categories of *Criminal Code* offences are shown in Figure 4.

Figure 3: Crime in British Columbia, 2002.



The other crimes category is comprised of those *Criminal Code* offences which do not fall under the violent or property offence classifications. Other crimes include prostitution, gaming and betting, offensive weapons, arson, disturb the peace, vandalism, criminal harassment, as well as miscellaneous other *Criminal Code* offences.

Data Qualifiers

Offence data contained in this report do not include drug offences or offences under other federal statutes such as the *Customs Act* and *Canada Shipping Act*. They also do not include offences under provincial statutes such as the *Liquor Control and Licencing Act* and the *Securities Act*, nor do they include *Criminal Code* traffic offences, provincial and municipal traffic offences, or other municipal bylaw infractions.

Data for 2003 are considered preliminary and subject to adjustments.



CRIMINAL CODE OFFENCES REPORTED — 1ST QUARTER 2003

ISLAND DISTRICT	2001				CRIME RATE	POP	2002				CRIME RATE	POP	2003				1Q/03		CRIME RATE	POP			
	1QTR	2QTR	3QTR	4QTR			1QTR	2QTR	3QTR	4QTR			1QTR	2QTR	3QTR	4QTR	%CHG FROM 4Q/02	%CHG FROM 1Q/02					
Alert Bay Prov	66	64	79	59	268	171	1,563	64	69	81	87	301	192	1,565	66	—	—	—	66	-24%	3%	—	—
Campbell River Mun	1,148	1,241	1,180	943	4,512	151	29,802	1,112	1,123	1,322	1,242	4,799	161	29,718	1,110	—	—	—	1,110	-11%	-0%	—	—
Campbell River Prov	110	140	134	103	487	92	5,285	90	112	187	105	494	93	5,286	107	—	—	—	107	2%	19%	—	—
Colwood Mun	239	270	253	221	983	68	14,410	219	231	343	300	1,093	75	14,534	329	—	—	—	329	10%	50%	—	—
Comox Mun	168	229	193	213	803	69	11,632	232	283	269	222	1,006	85	11,809	217	—	—	—	217	-2%	-6%	—	—
Comox Valley Prov	458	538	536	451	1,983	73	26,998	419	498	550	436	1,903	70	27,225	474	—	—	—	474	9%	13%	—	—
Courtenay Mun	859	925	1,073	1,010	3,867	202	19,160	1,020	1,131	1,222	1,158	4,531	233	19,435	1,075	—	—	—	1,075	-7%	5%	—	—
Duncan Prov	595	661	577	474	2,307	174	13,233	478	651	668	569	2,366	181	13,084	600	—	—	—	600	5%	26%	—	—
Gabriola Island Prov	47	72	49	39	207	56	3,686	34	22	62	46	164	42	3,897	45	—	—	—	45	-2%	32%	—	—
Ladysmith Mun	127	175	176	143	621	90	6,871	133	149	154	215	651	92	7,073	137	—	—	—	137	-36%	3%	—	—
Ladysmith Prov	106	109	136	98	449	78	5,767	99	123	121	94	437	72	6,064	99	—	—	—	99	5%	0%	—	—
Lake Cowichan Prov	230	233	242	180	885	147	6,007	145	208	268	194	815	134	6,100	153	—	—	—	153	-21%	6%	—	—
Langford Mun	696	559	545	575	2,375	120	19,796	573	583	686	584	2,426	121	20,117	618	—	—	—	618	6%	8%	—	—
Nanaimo Mun ¹	2,646	2,935	2,786	2,680	11,047	144	76,632	2,776	3,263	2,845	3,225	12,109	158	76,865	3,001	—	—	—	3,001	-7%	8%	—	—
Nanaimo Prov	160	172	183	175	690	53	12,983	174	209	237	211	831	63	13,186	202	—	—	—	202	-4%	16%	—	—
Nootka Sound Prov	62	90	115	65	332	133	2,488	50	59	62	73	244	101	2,426	61	—	—	—	61	-16%	22%	—	—
North Cowichan Mun	569	673	621	566	2,429	89	27,276	517	684	721	647	2,569	94	27,457	649	—	—	—	649	0%	26%	—	—
North Saanich Mun	116	110	131	112	469	43	10,824	113	121	119	132	485	45	10,824	107	—	—	—	107	-19%	-5%	—	—
Oceanside Prov	350	365	330	267	1,312	60	21,893	254	339	344	325	1,262	57	22,293	324	—	—	—	324	-0%	28%	—	—
Outer Gulf Islands Prov	64	53	76	46	239	55	4,381	57	58	81	29	225	47	4,739	42	—	—	—	42	45%	-26%	—	—
Parksville Mun	308	331	313	321	1,273	119	10,713	273	392	328	327	1,320	123	10,763	367	—	—	—	367	12%	34%	—	—
Port Alberni Mun	866	955	906	719	3,446	186	18,535	685	859	731	810	3,085	167	18,465	674	—	—	—	674	-17%	-2%	—	—
Port Alberni Prov	126	154	157	134	571	68	8,400	107	147	144	153	551	65	8,502	102	—	—	—	102	-33%	-5%	—	—
Port Alice Prov	24	20	17	20	81	67	1,217	16	22	41	22	101	86	1,173	26	—	—	—	26	18%	63%	—	—
Port Hardy Prov	224	261	254	231	970	156	6,209	220	224	313	239	996	161	6,183	226	—	—	—	226	-5%	3%	—	—
Port McNeill Prov	117	105	151	89	462	90	5,112	91	93	95	143	422	83	5,089	113	—	—	—	113	-21%	24%	—	—
Powell River Mun	454	429	337	523	1,743	129	13,543	380	477	488	502	1,847	136	13,581	523	—	—	—	523	4%	38%	—	—
Powell River Prov	158	134	142	126	560	100	5,574	138	147	171	137	593	106	5,599	116	—	—	—	116	-15%	-16%	—	—
Quadra Island Prov	33	37	44	34	148	39	3,828	29	42	58	39	168	43	3,928	31	—	—	—	31	-21%	7%	—	—
Qualicum Beach Mun	92	104	103	133	432	61	7,125	170	159	144	144	617	86	7,151	132	—	—	—	132	-8%	-22%	—	—
Saltspring Island Prov	66	102	129	104	401	41	9,698	81	89	101	78	349	36	9,818	87	—	—	—	87	12%	7%	—	—
Sayward Prov	35	32	30	31	128	142	900	27	39	36	29	131	142	923	19	—	—	—	19	-34%	-30%	—	—
Shawnigan Lake Prov	187	295	332	176	990	63	15,815	178	200	217	202	797	50	15,876	178	—	—	—	178	-12%	0%	—	—
Sidney Mun	224	205	180	185	794	70	11,362	142	166	181	148	637	56	11,281	146	—	—	—	146	-1%	3%	—	—
Sidney Prov	41	43	49	31	164	56	2,953	27	87	49	53	216	73	2,978	49	—	—	—	49	-8%	81%	—	—
Sooke Mun ⁵	—	—	—	—	—	—	—	317	256	281	235	1,089	118	9,255	219	—	—	—	219	-7%	-31%	—	—
Sooke Prov	308	341	349	358	1,356	103	13,224	111	97	103	126	437	104	4,196	76	—	—	—	76	-40%	-32%	—	—
Texada Island Prov	26	21	31	26	104	88	1,180	10	16	14	19	59	48	1,221	20	—	—	—	20	5%	100%	—	—
Tofino Prov	109	144	84	105	442	173	2,554	94	127	213	108	542	212	2,562	97	—	—	—	97	-10%	3%	—	—
Ucluelet Prov	60	62	121	40	283	128	2,217	50	88	129	75	342	154	2,218	39	—	—	—	39	-48%	-22%	—	—
View Royal Mun	158	158	191	129	636	83	7,619	129	183	174	148	634	80	7,914	146	—	—	—	146	-1%	13%	—	—
West Shore Prov	118	135	104	100	457	51	8,906	96	121	138	96	451	51	8,910	105	—	—	—	105	9%	9%	—	—
ISLAND DISTRICT	12,550	13,682	13,439	12,035	51,706	108	477,371	11,930	13,947	14,491	13,727	54,095	112	481,283	12,907	—	—	—	12,907	-6%	8%	—	—

CRIMINAL CODE OFFENCES REPORTED — 1ST QUARTER 2003



NORTH DISTRICT	1QTR	2QTR	3QTR	4QTR	2001			1QTR	2QTR	3QTR	4QTR	2002			1QTR	2QTR	3QTR	4QTR	1Q/03		CRIME RATE	POP	
					CRIME RATE	POP	CRIME RATE					POP	2003	%CHG FROM 4Q/02					%CHG FROM 1Q/02				
Alexis Creek Prov	76	90	56	65	287	145	1,977	51	72	75	52	250	125	1,993	66	—	—	—	66	27%	29%	—	—
Anahim Lake Prov	73	74	101	78	326	303	1,076	49	69	119	76	313	272	1,150	78	—	—	—	78	3%	59%	—	—
Atlin Prov	18	35	40	24	117	194	604	17	29	31	31	108	164	658	23	—	—	—	23	-26%	35%	—	—
Bella Bella Prov	111	152	199	186	648	429	1,511	214	220	240	297	971	640	1,517	234	—	—	—	234	-21%	9%	—	—
Bella Coola Prov	58	98	114	78	348	143	2,441	53	82	115	90	340	138	2,464	60	—	—	—	60	-33%	13%	—	—
Burns Lake Prov	285	305	298	234	1,122	159	7,072	278	372	362	292	1,304	182	7,160	202	—	—	—	202	-31%	-27%	—	—
Chetwynd Prov	165	215	232	163	775	136	5,688	155	199	221	187	762	132	5,761	152	—	—	—	152	-19%	-2%	—	—
Dawson Creek Mun	573	611	582	465	2,231	197	11,305	395	531	725	501	2,152	189	11,409	414	—	—	—	414	-17%	5%	—	—
Dawson Creek Prov	59	75	65	73	272	35	7,695	49	66	79	58	252	31	8,251	40	—	—	—	40	-31%	-18%	—	—
Dease Lake Prov	50	78	80	73	281	202	1,391	67	123	130	87	407	284	1,431	76	—	—	—	76	-13%	13%	—	—
Fort Nelson Prov	232	209	297	255	993	166	5,999	240	359	319	223	1,141	188	6,063	281	—	—	—	281	26%	17%	—	—
Fort St. James Prov	213	323	331	245	1,112	230	4,836	198	299	345	306	1,148	234	4,915	247	—	—	—	247	-19%	25%	—	—
Fort St. John Mun	733	1,015	963	893	3,604	512	16,995	928	1,020	974	1,053	3,975	232	17,117	871	—	—	—	871	-17%	-6%	—	—
Fort St. John Prov	137	160	175	168	640	52	12,307	122	199	206	170	697	56	12,422	116	—	—	—	116	-32%	-5%	—	—
Fraser Lake Prov	62	102	139	88	391	111	3,528	88	114	89	74	365	99	3,670	73	—	—	—	73	-1%	-17%	—	—
Granisle Prov	56	41	63	27	187	342	547	28	27	45	21	121	200	605	19	—	—	—	19	-10%	-32%	—	—
Houston Prov	110	107	94	75	386	81	4,780	80	78	93	91	342	72	4,753	107	—	—	—	107	18%	34%	—	—
Hudsons Hope Prov	17	30	34	21	102	67	1,515	21	25	30	24	100	63	1,589	15	—	—	—	15	-38%	-29%	—	—
Kitimat Mun	131	223	191	196	741	69	10,771	140	199	179	170	688	63	10,851	159	—	—	—	159	-6%	14%	—	—
Kitimat Prov	16	21	15	11	63	116	545	7	15	23	18	63	117	538	15	—	—	—	15	-17%	114%	—	—
Lisims-Nass Valley Prov	78	104	151	110	443	233	1,900	66	114	148	128	456	242	1,888	63	—	—	—	63	-51%	-5%	—	—
Mackenzie Mun	82	129	113	101	425	77	5,489	84	118	139	117	458	83	5,538	105	—	—	—	105	-10%	25%	—	—
Mackenzie Prov	9	11	23	18	61	260	235	7	13	17	21	58	254	228	22	—	—	—	22	5%	214%	—	—
Masset Prov	124	166	153	122	565	235	2,406	122	156	210	167	655	269	2,437	131	—	—	—	131	-22%	7%	—	—
McBride Prov	23	28	40	33	124	56	2,204	27	36	76	37	176	78	2,252	26	—	—	—	26	-30%	-4%	—	—
New Hazelton Prov	176	279	296	192	943	149	6,344	227	222	330	242	1,021	160	6,384	229	—	—	—	229	-5%	1%	—	—
One Hundred Mile House Prov	231	284	335	261	1,111	82	13,541	191	233	332	263	1,019	75	13,621	197	—	—	—	197	-25%	3%	—	—
Prince George Mun	2,679	3,448	3,439	3,203	12,769	168	76,197	2,984	3,605	3,634	3,687	13,910	183	76,008	3,354	—	—	—	3,354	-9%	12%	—	—
Prince George Prov	145	215	189	129	678	48	14,129	90	141	196	144	571	40	14,330	83	—	—	—	83	-42%	-8%	—	—
Prince Rupert Mun	806	787	880	630	3,103	202	15,376	708	743	852	774	3,077	200	15,420	621	—	—	—	621	-20%	-12%	—	—
Prince Rupert Prov	65	86	78	62	291	131	2,213	64	58	77	70	269	124	2,176	53	—	—	—	53	-24%	-17%	—	—
Queen Charlotte City Prov	55	60	61	33	209	76	2,752	55	68	104	68	295	104	2,823	55	—	—	—	55	-19%	0%	—	—
Quesnel Mun	575	681	683	497	2,436	231	10,526	433	637	601	522	2,193	207	10,591	547	—	—	—	547	5%	26%	—	—
Quesnel Prov	199	239	279	179	896	61	14,606	162	193	263	201	819	56	14,621	193	—	—	—	193	-4%	19%	—	—
Smithers Mun	300	256	311	270	1,137	200	5,690	286	344	475	351	1,456	255	5,710	319	—	—	—	319	-9%	12%	—	—
Smithers Prov	97	167	119	72	455	56	8,083	75	117	163	132	487	61	8,017	118	—	—	—	118	-11%	57%	—	—
Stewart Prov	9	25	20	23	77	99	775	14	34	18	13	79	102	774	12	—	—	—	12	-8%	-14%	—	—
Takla Landing Prov	16	28	30	26	100	503	199	21	37	14	17	89	445	200	38	—	—	—	38	124%	81%	—	—
Terrace Mun	532	612	649	554	2,347	185	12,711	478	561	575	519	2,133	170	12,568	524	—	—	—	524	1%	10%	—	—
Terrace Prov	163	210	168	151	692	84	8,226	114	198	210	162	684	83	8,221	135	—	—	—	135	-17%	18%	—	—
Tsay Keh Dene Prov	34	66	79	43	222	550	404	74	65	94	41	274	690	397	47	—	—	—	47	15%	-36%	—	—
Tumbler Ridge Prov	60	70	55	52	237	123	1,933	54	85	107	94	340	140	2,422	56	—	—	—	56	-40%	4%	—	—
Valemount Prov	68	68	63	58	257	133	1,939	63	75	133	59	330	166	1,982	52	—	—	—	52	-12%	-17%	—	—
Vanderhoof Prov	158	219	258	253	888	103	8,583	196	222	254	250	922	106	8,670	173	—	—	—	173	-31%	-12%	—	—
Wells Prov	4	6	15	8	33	76	434	2	9	19	8	38	80	474	2	—	—	—	2	-75%	0%	—	—
Williams Lake Mun	710	772	875	721	3,078	263	11,716	594	833	827	698	2,952	252	11,730	598	—	—	—	598	-14%	1%	—	—
Williams Lake Prov	113	169	194	122	598	41	14,700	136	193	199	170	698	47	14,790	113	—	—	—	113	-34%	-17%	—	—
NORTH DISTRICT	10,686	13,149	13,625	11,341	48,801	141	345,894	10,507	13,208	14,467	12,776	50,958	146	348,589	11,114	—	—	—	11,114	-13%	6%	—	—

CRIMINAL CODE OFFENCES REPORTED — 1ST QUARTER 2003



SOUTHEAST DISTRICT	2001				CRIME RATE	POP	2002				CRIME RATE	POP	2003				%CHG FROM 4Q/02	CRIME RATE	POP				
	1QTR	2QTR	3QTR	4QTR			1QTR	2QTR	3QTR	4QTR			1QTR	2QTR	3QTR	4QTR				1Q/03			
Armstrong Prov	65	89	131	104	389	81	4,829	70	109	149	116	444	92	4,841	101	—	—	101	-13%	44%	—	—	
Ashcroft Prov	110	144	142	134	530	131	4,046	81	107	149	133	470	114	4,134	92	—	—	92	-31%	14%	—	—	
Barriere Prov	31	72	71	50	224	56	3,990	31	59	81	55	226	55	4,104	48	—	—	48	-13%	55%	—	—	
Castlegar Mun	186	242	288	257	973	133	7,328	200	290	213	266	969	134	7,248	214	—	—	214	-20%	7%	—	—	
Castlegar Prov	53	85	58	75	271	40	6,771	60	79	81	56	276	41	6,703	50	—	—	50	-11%	-17%	—	—	
Chase Prov	146	244	245	174	809	92	8,784	160	260	298	190	908	103	8,855	115	—	—	115	-39%	-28%	—	—	
Clearwater Prov	89	108	147	104	448	82	5,446	71	128	129	133	461	84	5,507	64	—	—	64	-52%	-10%	—	—	
Clinton Prov	36	68	86	83	273	123	2,227	32	71	98	77	278	128	2,168	40	—	—	40	-48%	25%	—	—	
Coldstream Mun	84	108	89	90	371	39	9,483	82	85	112	91	370	39	9,564	111	—	—	111	22%	35%	—	—	
Columbia Valley Prov	171	301	302	220	994	108	9,174	228	229	397	205	1,059	109	9,717	192	—	—	192	-6%	-16%	—	—	
Cranbrook Mun	647	563	588	605	2,403	124	19,352	442	624	676	627	2,369	121	19,653	604	—	—	604	-4%	37%	—	—	
Cranbrook Prov	76	74	92	68	310	47	6,571	34	91	76	64	265	39	6,852	71	—	—	71	11%	109%	—	—	
Creston Prov	268	301	417	288	1,274	93	13,628	261	330	325	276	1,192	88	13,478	292	—	—	292	6%	12%	—	—	
Elk Valley Prov	380	363	397	369	1,509	104	14,569	341	318	455	368	1,482	100	14,861	394	—	—	394	7%	16%	—	—	
Enderby Prov	165	157	210	177	709	102	6,974	149	163	202	144	658	99	6,664	172	—	—	172	19%	15%	—	—	
Falkland Prov	35	55	49	32	171	53	3,222	37	73	46	30	186	56	3,302	27	—	—	27	-10%	-27%	—	—	
Golden Prov	182	266	290	168	906	121	7,476	168	205	261	232	866	112	7,701	171	—	—	171	-26%	2%	—	—	
Grand Forks Prov	105	172	194	174	645	71	9,143	151	165	264	149	729	81	8,960	122	—	—	122	-18%	-19%	—	—	
Kamloops Mun	2,433	2,782	3,077	2,809	11,101	135	82,532	2,473	3,325	3,212	3,514	12,524	154	81,443	3,236	—	—	3,236	-8%	31%	—	—	
Kaslo Prov	14	36	94	72	216	97	2,228	24	43	22	27	116	52	2,215	28	—	—	28	4%	17%	—	—	
Kelowna Mun	2,663	2,998	3,556	3,062	12,279	122	100,832	2,497	3,039	3,689	3,210	12,435	122	101,592	2,885	—	—	2,885	-18%	16%	—	—	
Kelowna Prov	608	787	877	751	3,023	70	43,357	601	768	995	879	3,243	74	44,054	766	—	—	766	-13%	27%	—	—	
Keremeos Prov	80	95	109	74	358	80	4,485	64	104	126	74	368	81	4,561	74	—	—	74	0%	16%	—	—	
Kimberley Mun	175	187	216	103	681	101	6,767	107	134	146	135	522	76	6,862	138	—	—	138	2%	29%	—	—	
Kimberley Prov	31	47	39	29	146	60	2,435	26	36	56	28	146	60	2,444	29	—	—	29	4%	12%	—	—	
Lake Country Mun	107	136	167	121	531	55	9,671	99	142	213	180	634	65	9,750	125	—	—	125	-31%	26%	—	—	
Lillooet Prov	118	127	144	129	518	137	3,784	125	160	135	101	521	134	3,897	109	—	—	109	8%	-13%	—	—	
Logan Lake Prov	51	62	72	46	231	82	2,806	39	49	61	30	179	62	2,894	50	—	—	50	67%	28%	—	—	
Lumby Prov	113	123	107	132	475	96	4,959	117	145	147	200	609	121	5,028	123	—	—	123	-39%	5%	—	—	
Lytton Prov	93	98	95	84	370	172	2,152	60	78	124	67	329	151	2,174	61	—	—	61	-9%	2%	—	—	
Merritt Mun	335	401	417	371	1,524	206	7,416	395	425	403	436	1,659	220	7,549	366	—	—	366	-16%	-7%	—	—	
Merritt Prov	61	90	99	85	335	92	3,639	66	84	147	108	405	109	3,702	63	—	—	63	-42%	-5%	—	—	
Midway Prov	39	51	68	37	195	57	3,421	18	37	57	36	148	44	3,390	36	—	—	36	0%	100%	—	—	
Nakusp Prov	54	101	103	68	326	83	3,908	65	58	92	84	299	75	3,986	66	—	—	66	-21%	2%	—	—	
Nelson Prov	87	93	121	123	424	38	11,134	112	145	171	116	544	49	11,009	121	—	—	121	4%	8%	—	—	
Oliver Prov	208	255	299	197	959	96	9,984	195	251	269	159	874	88	9,889	174	—	—	174	9%	-11%	—	—	
Osoyoos Prov	104	134	224	130	592	98	6,034	127	177	331	139	774	130	5,955	114	—	—	114	-18%	-10%	—	—	
Penticton Mun	889	1,103	1,279	1,367	4,638	144	32,294	966	1,239	1,518	1,236	4,959	154	32,202	1,262	—	—	1,262	2%	31%	—	—	
Penticton Prov	121	115	157	139	532	48	11,062	121	134	180	126	561	51	11,046	145	—	—	145	15%	20%	—	—	
Princeton Prov	125	193	195	128	641	125	5,139	118	127	148	133	526	102	5,157	115	—	—	115	-14%	-3%	—	—	
Revelstoke Mun	126	201	237	186	750	95	7,854	176	219	267	167	829	104	7,945	116	—	—	116	-31%	-34%	—	—	
Revelstoke Prov	21	27	38	16	102	146	700	17	20	29	15	81	114	708	8	—	—	8	-47%	-53%	—	—	
Salmo Prov	42	72	64	58	236	91	2,585	27	76	60	60	223	87	2,571	49	—	—	49	-18%	81%	—	—	
Salmon Arm Mun ¹	314	431	411	478	1,634	102	16,032	272	366	405	444	1,487	92	16,080	357	—	—	357	-20%	31%	—	—	
Salmon Arm Prov	74	72	91	66	303	41	7,426	34	95	99	92	320	40	8,015	58	—	—	58	-37%	71%	—	—	
Sicamous Prov	81	147	216	96	540	124	4,352	72	123	213	108	516	116	4,461	91	—	—	91	-16%	26%	—	—	
Slocan Lake Prov	15	38	28	22	103	32	3,212	15	19	32	15	81	25	3,232	12	—	—	12	-20%	-20%	—	—	
Spallumcheen Mun	32	46	68	51	197	37	5,350	26	57	63	48	194	36	5,377	43	—	—	43	-10%	65%	—	—	
Summerland Mun	160	149	180	121	610	55	11,116	137	186	233	180	736	67	11,044	142	—	—	142	-21%	4%	—	—	
T'Kumlups Prov	126	166	178	175	645	127	5,076	149	181	180	174	684	133	5,147	168	—	—	168	-3%	13%	—	—	
Trail Mun	216	245	286	241	988	125	7,884	199	194	227	231	851	106	8,060	223	—	—	223	-3%	12%	—	—	
Trail and District Prov	109	121	168	95	493	42	11,726	102	128	141	154	525	46	11,518	133	—	—	133	-14%	30%	—	—	
Vernon Mun	1,221	1,434	1,352	1,254	5,261	150	34,998	1,142	1,671	1,515	1,683	6,011	171	35,147	1,435	—	—	1,435	-15%	26%	—	—	
Vernon Prov	139	163	139	163	604	56	10,725	146	166	109	165	586	54	10,782	238	—	—	238	44%	63%	—	—	
SOUTHEAST DISTRICT	14,014	16,738	18,767	16,251	65,770	104	632,088	13,527	17,587	19,827	17,766	68,707	108	635,198	16,039	—	—	—	16,039	-10%	19%	—	—

CRIMINAL CODE OFFENCES REPORTED — 1ST QUARTER 2003

LOWER MAINLAND DISTRICT	2001				CRIME RATE	POP	2002				CRIME RATE	POP	2003				1Q/03		CRIME RATE	POP			
	1QTR	2QTR	3QTR	4QTR			1QTR	2QTR	3QTR	4QTR			1QTR	2QTR	3QTR	4QTR	%CHG FROM 4Q/02	%CHG FROM 1Q/02					
Agassiz Prov	307	290	351	242	1,190	142	8,366	216	334	363	299	1,212	141	8,597	213	—	—	—	213	-29%	-1%	—	—
Boston Bar Prov	26	35	49	23	133	156	855	17	37	41	40	135	161	838	21	—	—	—	21	-48%	24%	—	—
Bowen Island Prov	30	27	60	28	145	47	3,106	30	40	56	26	152	48	3,185	31	—	—	—	31	19%	3%	—	—
Burnaby Mun	5,638	6,007	6,345	5,830	23,820	117	204,407	5,393	5,895	5,602	6,083	22,973	112	205,955	5,606	—	—	—	5,606	-8%	4%	—	—
Chilliwack Mun ¹	2,024	2,354	2,552	2,384	9,314	137	67,900	2,430	2,736	2,815	2,920	10,901	159	68,688	2,720	—	—	—	2,720	-7%	12%	—	—
Chilliwack Prov	89	117	164	92	462	104	4,424	101	151	211	99	562	126	4,478	93	—	—	—	93	-6%	-8%	—	—
Coquitlam Mun ¹	2,673	2,973	2,924	2,962	11,532	97	118,637	2,934	2,842	3,054	3,218	12,048	100	120,982	2,982	—	—	—	2,982	-7%	2%	—	—
Coquitlam Prov	9	34	31	20	94	44	2,133	29	34	36	27	126	59	2,150	20	—	—	—	20	-26%	-31%	—	—
Gibsons Landing Prov	216	230	233	265	944	74	12,831	220	345	345	321	1,231	95	12,925	73	—	—	—	73	-77%	-67%	—	—
Hope Mun	275	358	399	249	1,281	199	6,443	307	344	410	335	1,396	214	6,521	295	—	—	—	295	-12%	-4%	—	—
Hope Prov	54	57	76	49	236	183	1,293	43	79	64	55	241	194	1,245	39	—	—	—	39	-29%	-9%	—	—
Langley City Mun	983	1,018	1,075	1,395	4,471	180	24,885	1,165	1,316	1,203	1,225	4,909	199	24,682	1,158	—	—	—	1,158	-5%	-1%	—	—
Langley Township Mun ¹	2,126	2,316	2,349	2,434	9,225	101	91,520	2,304	2,538	2,899	2,784	10,525	115	91,301	2,337	—	—	—	2,337	-16%	1%	—	—
Maple Ridge Mun ¹	1,847	2,210	2,550	2,074	8,681	131	66,509	2,060	2,113	2,515	2,514	9,202	134	68,763	2,041	—	—	—	2,041	-19%	-1%	—	—
Mission Mun	1,080	1,157	1,193	1,343	4,773	146	32,793	1,263	1,380	1,391	1,396	5,430	165	32,907	1,203	—	—	—	1,203	-14%	-5%	—	—
Mission Prov	126	158	202	163	649	142	4,572	136	183	206	148	673	135	4,989	102	—	—	—	102	-31%	-25%	—	—
North Vancouver City Mun ¹	1,249	1,247	1,356	1,230	5,082	108	47,114	1,237	1,243	1,338	1,237	5,055	105	48,238	1,260	—	—	—	1,260	2%	2%	—	—
North Vancouver District Mun ¹	1,203	1,440	1,366	1,175	5,184	59	87,399	1,182	1,246	1,497	1,337	5,262	60	87,175	1,287	—	—	—	1,287	-4%	9%	—	—
North Vancouver Prov ²	48	61	61	74	244	—	5	62	79	59	44	244	—	5	56	—	—	—	56	27%	-10%	—	—
Pemberton Prov	77	91	125	77	370	113	3,277	102	114	95	69	380	110	3,448	70	—	—	—	70	1%	-31%	—	—
Pitt Meadows Mun	307	423	380	320	1,430	93	15,392	332	322	381	318	1,353	86	15,755	326	—	—	—	326	3%	-2%	—	—
Port Coquitlam Mun ¹	1,147	1,491	1,448	1,195	5,281	98	53,946	1,223	1,360	1,568	1,415	5,566	100	55,798	1,255	—	—	—	1,255	-11%	3%	—	—
Richmond Mun	3,266	3,227	4,008	3,430	13,931	81	172,547	2,975	3,453	3,533	3,555	13,516	77	174,617	3,282	—	—	—	3,282	-8%	10%	—	—
Ridge Meadows Prov ²	10	29	46	13	98	—	10	9	24	48	15	96	—	10	16	—	—	—	16	7%	78%	—	—
Sechelt Mun	269	238	270	229	1,006	124	8,081	184	259	312	263	1,018	123	8,251	257	—	—	—	257	-2%	40%	—	—
Sechelt Prov	158	138	169	150	615	106	5,785	114	134	196	113	557	99	5,599	271	—	—	—	271	140%	138%	—	—
Squamish Mun ¹	486	564	562	559	2,171	143	15,169	563	545	787	685	2,580	171	15,123	713	—	—	—	713	4%	27%	—	—
Squamish Prov	43	113	104	63	323	143	2,265	47	80	80	40	247	108	2,278	41	—	—	—	41	3%	-13%	—	—
Surrey Mun	11,073	12,325	12,316	12,846	48,560	133	365,523	11,788	11,979	11,988	11,591	47,346	126	376,757	10,604	—	—	—	10,604	-9%	-10%	—	—
Surrey Prov	16	29	25	19	89	131	680	20	24	26	23	93	139	669	22	—	—	—	22	-4%	10%	—	—
University Prov	266	227	403	410	1,306	160	8,166	337	285	415	387	1,424	166	8,574	341	—	—	—	341	-12%	1%	—	—
Whistler Mun	728	594	506	531	2,359	246	9,590	780	474	515	443	2,212	227	9,739	723	—	—	—	723	63%	-7%	—	—
Whistler Prov	5	16	14	16	51	180	284	6	11	10	13	40	137	291	4	—	—	—	4	-69%	-33%	—	—
White Rock Mun	404	395	423	322	1,544	81	19,049	409	556	501	399	1,865	96	19,408	364	—	—	—	364	-9%	-11%	—	—
LOWER MAINLAND DISTRICT	38,258	41,989	44,135	42,212	166,594	114	1,464,956	40,018	42,555	44,560	43,437	170,570	114	1,489,941	39,826	—	—	—	39,826	-8%	0%	—	—



CRIMINAL CODE OFFENCES REPORTED — 1ST QUARTER 2003

INDEPENDENT FORCES	1QTR	2QTR	3QTR	4QTR	2001	CRIME RATE	POP	1QTR	2QTR	3QTR	4QTR	2002	CRIME RATE	POP	1QTR	2QTR	3QTR	4QTR	2003	1Q/03		CRIME RATE	POP
																				%CHG FROM 4q/02	FROM 1q/02		
Abbotsford Mun ¹	2,987	3,079	3,785	3,586	13,437	110	121,930	3,114	3,532	3,877	3,786	14,309	114	125,613	3,395	—	—	—	3,395	-10%	9%	—	—
Central Saanich Mun	186	202	189	207	784	49	15,993	175	183	187	206	751	47	15,995	173	—	—	—	173	-16%	-1%	—	—
Delta Mun ¹	1,923	1,975	1,828	1,834	7,560	74	101,520	1,559	1,698	1,687	1,599	6,543	65	101,299	1,554	—	—	—	1,554	-3%	-0%	—	—
Nelson City Mun	236	324	416	324	1,300	133	9,746	346	383	469	382	1,580	165	9,571	336	—	—	—	336	-12%	-3%	—	—
New Westminster Mun	2,249	2,054	2,328	2,282	8,913	154	57,713	2,172	2,043	2,165	2,018	8,398	146	57,603	2,066	—	—	—	2,066	2%	-5%	—	—
Oak Bay Mun	214	259	234	216	923	50	18,506	209	225	214	259	907	49	18,360	236	—	—	—	236	-9%	13%	—	—
Port Moody Mun ^{3,7}	371	463	405	377	1,616	65	25,047	336	415	434	468	1,653	65	25,545	336	—	—	—	336	-28%	0%	—	—
Saanich Mun	1,536	1,667	1,501	1,471	6,175	57	108,543	1,446	1,439	1,574	1,536	5,995	55	108,084	1,414	—	—	—	1,414	-8%	-2%	—	—
Vancouver Mun ^{3,4,7}	18,477	18,043	19,558	18,734	74,812	129	578,636	17,849	18,127	18,857	16,713	71,546	123	581,207	18,520	—	—	—	18,520	11%	4%	—	—
Victoria City Mun ⁷	4,254	4,728	4,637	4,279	17,898	188	95,373	4,567	4,378	5,033	4,756	18,734	198	94,844	4,578	—	—	—	4,578	-4%	0%	—	—
West Vancouver Mun ¹	633	733	714	732	2,812	62	45,350	743	911	1,008	814	3,476	77	45,213	815	—	—	—	815	0%	10%	—	—
INDEPENDENT FORCES	33,066	33,527	35,595	34,042	136,230	116	1,178,357	32,516	33,334	35,505	32,537	133,892	113	1,183,334	33,423	—	—	—	33,423	3%	3%	—	—

CRIMINAL CODE OFFENCES REPORTED — 1ST QUARTER 2003

PROVINCE	1QTR	2QTR	3QTR	4QTR	2001	CRIME RATE	POP	1QTR	2QTR	3QTR	4QTR	2002	CRIME RATE	POP	1QTR	2QTR	3QTR	4QTR	2003	1Q/03		CRIME RATE	POP
																				%CHG FROM 4q/02	FROM 1q/02		
BRITISH COLUMBIA⁶	108,831	119,345	125,829	116,121	470,126	115	4,101,579	108,726	120,911	129,154	120,527	479,318	116	4,141,272	113,453	—	—	—	113,453	-6%	4%	—	—

CRIMINAL CODE OFFENCES REPORTED — 1ST QUARTER 2003



FOOTNOTES

- ¹ Population figures also include First Nations Reserve populations.
- ² Provincial parks are located within the policing jurisdictions of North Vancouver Prov and Ridge Meadows Prov. The crime rates for both of these policing jurisdictions are substantially inflated due to small residential populations and the relatively large amount of property crimes occurring within these parks. As a result, crime rates for these jurisdictions have not been calculated.
- ³ Data shown for 2001 include estimates for the Cities of Vancouver and Port Moody. For each jurisdiction, the estimates cover the phase-in period required for PRIME-BC. In the case of Vancouver, the estimates cover the reporting period of February to April 2001 and are based on the Vancouver Police Department's 2000 reporting under the UCR Incident-Based Survey. In the case of Port Moody, the estimates cover the reporting period of March to April 2001 and are based on the Port Moody Police Department's 2000 reporting under the UCR Survey.
- ⁴ From September 2000 to September 2001, as a result of E-Comm labour action, there were decreases in the number of crimes reported to the Vancouver Police Department, e.g., theft, assault, and robbery. As a result, the number of Criminal Code offences reported by Vancouver for each year were affected.
- ⁵ Sooke entered into a municipal police contract in 2002. Prior to this date, the municipal data are included in Sooke Prov.
- ⁶ The BC total includes additional reporting from First Nations Administered Police Services (FNAPS), Canadian National Railway Police, Canadian Pacific Railway Police and other specialized or non-jurisdictional units.
- ⁷ The Victoria City and Esquimalt police departments were amalgamated in 2003. Data shown includes reporting by both departments up to, and including the year of amalgamation.
- ⁸ Data shown for 2003 include estimates for the Cities of Vancouver, Victoria, and Port Moody. The estimates are based on each police department's 2002 reporting under the UCR Survey.

DATA QUALIFIERS

1. Criminal Code offences include CC: Person, Property, and Other Offences. CC: Person offences include the violent crimes of homicide, attempted murder, sexual and non-sexual assault, robbery, and abduction. CC: Property offences include the property crimes of break and enter, motor vehicle theft, theft, possession of stolen property, and fraud. CC: Other offences include the other crimes of prostitution, gaming and betting, offensive weapons, bail violations, disturb the peace, escape custody, indecent acts, kidnapping, public morals, obstruct police, prisoner at large, trespass at night, mischief and property damage as well as any Criminal Code offence not covered by a specific UCR offence category, e.g. breach of probation, computer/data mischief, criminal harassment, uttering threats, etc. Excluded from these Criminal Code offence data are offences under other federal statutes such as the Controlled Drug and Substances Act as well as offences under provincial statutes such as the Liquor Control and Licensing Act. In addition, the data do not include federal, provincial or municipal traffic offences or violations.
2. The crime data contained in this report have been recorded by the police on the Uniform Crime Reporting Survey (UCR). Offences are scored according to the UCR Scoring Rules. If a single criminal incident contains a number of violations of the law, then only the most serious one is recorded for UCR purposes. However, with the exception of robbery offences where one incident with multiple victims is scored as one offence, police record one offence for every victim of a "violent" crime. Criminal Code offences represents only those offences reported to, or discovered by police which, upon preliminary investigation, have been deemed to have occurred or been attempted; this data does not represent or imply a count of the number of charges laid, prosecutions conducted, informations sworn or convictions obtained. **All data shown for 2003 is considered preliminary and subject to adjustments.**
3. The crime rate is defined as the number of Criminal Code offences (excluding Traffic) per 1,000 population. Population figures are based on the results of Canada Census which is conducted every five years. Canada Census occurred in 2001. Population figures for intervening years are estimates based on Census data.
4. Caution should be used in the interpretation of the percentage changes in the volume of offences. If the number of recorded offences is small, the percentage change is often very large. As a result, the percentage change may exaggerate the actual change in volume, and therefore, as an indicator of the trend in the incidence of crime, it may be misleading.

SOURCES: Offence data from the Uniform Crime Reporting Survey (UCR);
Population data from BCSTATS, Population Section, Ministry of Management Services, Province of British Columbia.

DATE: June 3, 2003.