

# 1<sup>st</sup> QUARTER 2004

## QUARTERLY CRIME REPORT

### Crime in the 1st Quarter of 2004

In the first quarter of 2004, there were 121,402 *Criminal Code* offences reported in BC, 8,231 offences or 7% more than the first quarter of 2003. This number represents an 11% increase from the first quarters of 2002 and 2001.

More crimes are reported in the summer months than during the rest of the year. As a result, both the rate and the number of crimes reported peak in the 2nd and 3rd quarters of each year.

Figure 1 shows quarterly trends in the number of *Criminal Code* offences reported to police in BC.

The crime rate is the number of *Criminal Code* offences or crimes reported for every 1,000 persons. It is a better measure of trends in crime than the actual number of offences because it allows for population growth. Crime rates represent all *Criminal Code* offences reported by police excluding traffic violations and other federal or provincial statutes such as drug or liquor offences.

Figure 1: Criminal Code Offences in BC Reported By Quarter, 2001 - 2004.

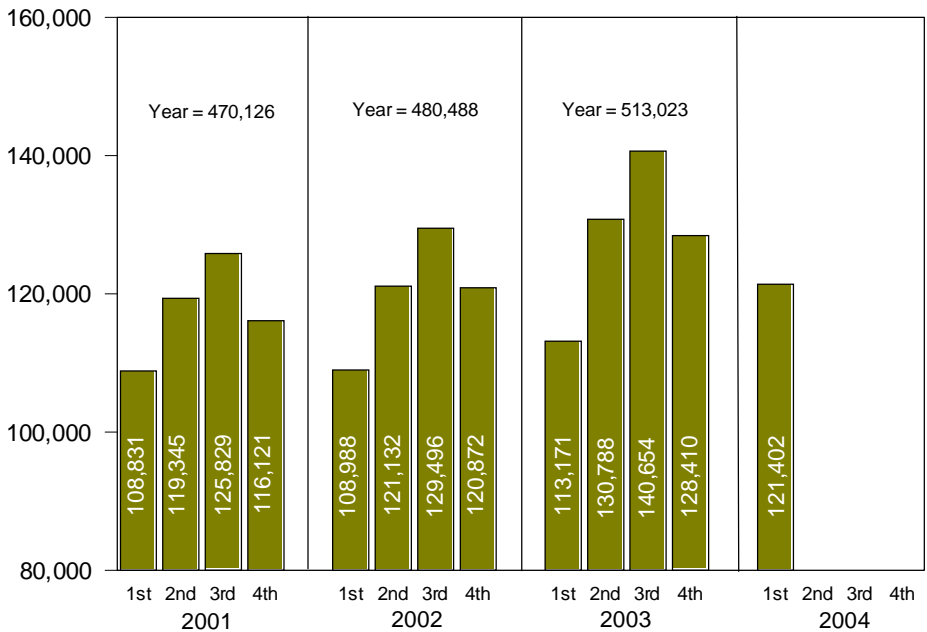
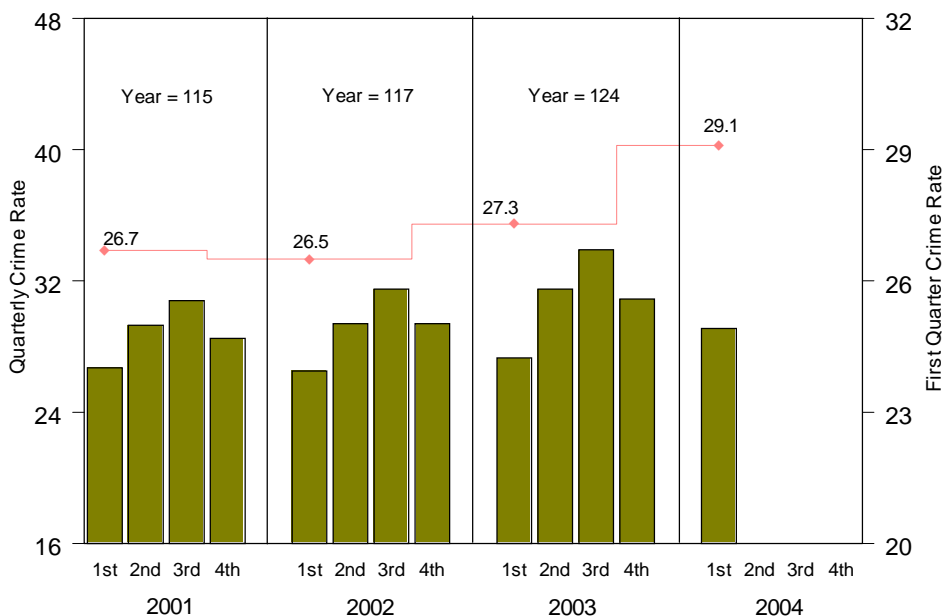


Figure 2: Crime Rates in BC By Quarter, 2001 - 2004.



In the first quarter of 2004, the crime rate was 29.1 offences per 1,000 persons. This rate represents a 7% increase from the 2003 first quarter rate of 27.3, a 10% increase from the first quarter of 2002 and a 12% increase from the first quarter of 2001.

From 2000 to 2004, the first quarter crime rate averaged 27 offences per 1,000 persons.

Figure 2 shows quarterly trends in the crime rate.

**CRIMINAL CODE OFFENCES REPORTED — 1<sup>ST</sup> QUARTER 2004**

ISLAND DISTRICT	2002				CRIME RATE	POP	2003				CRIME RATE	POP	2004				1Q/04		CRIME RATE	POP			
	1QTR	2QTR	3QTR	4QTR			1QTR	2QTR	3QTR	4QTR			1QTR	2QTR	3QTR	4QTR	%CHG FROM 4q/03	FROM 1q/03					
Alert Bay Prov	65	66	80	86	297	191	1,559	68	62	40	30	200	125	1,599	33	—	—	—	33	10%	-51%	—	—
Campbell River Mun	1,113	1,124	1,325	1,248	4,810	163	29,513	1,130	1,602	1,378	1,426	5,536	187	29,617	1,388	—	—	—	1,388	-3%	23%	—	—
Campbell River Prov	90	112	187	106	495	94	5,276	107	194	135	127	563	110	5,116	142	—	—	—	142	12%	33%	—	—
Colwood Mun	221	231	342	301	1,095	76	14,429	329	298	273	282	1,182	82	14,437	276	—	—	—	276	-2%	-16%	—	—
Comox Mun	233	283	270	222	1,008	86	11,761	217	212	252	164	845	71	11,937	169	—	—	—	169	3%	-22%	—	—
Comox Valley Prov	419	498	551	443	1,911	71	26,946	477	536	605	480	2,098	80	26,244	550	—	—	—	550	15%	15%	—	—
Courtenay Mun	1,021	1,134	1,180	1,165	4,500	234	19,236	1,078	1,216	1,336	1,257	4,887	240	20,340	1,138	—	—	—	1,138	-9%	6%	—	—
Duncan Prov	478	657	670	574	2,379	181	13,146	603	639	699	597	2,538	192	13,215	705	—	—	—	705	18%	17%	—	—
Gabriola Island Prov	34	22	62	49	167	45	3,730	48	39	43	24	154	41	3,789	25	—	—	—	25	4%	-48%	—	—
Ladysmith Mun	133	149	154	215	651	94	6,914	138	183	175	164	660	95	6,972	156	—	—	—	156	-5%	13%	—	—
Ladysmith Prov	99	123	124	94	440	76	5,774	99	135	117	100	451	78	5,819	122	—	—	—	122	22%	23%	—	—
Lake Cowichan Prov	146	208	266	194	814	136	5,993	159	193	243	168	763	126	6,037	110	—	—	—	110	-35%	-31%	—	—
Langford Mun	572	582	686	584	2,424	121	19,980	619	630	656	553	2,458	121	20,292	593	—	—	—	593	7%	-4%	—	—
Nanaimo Mun <sup>1</sup>	2,782	3,267	2,854	3,225	12,128	158	76,596	3,018	3,376	3,236	3,455	13,085	170	76,991	3,385	—	—	—	3,385	-2%	12%	—	—
Nanaimo Prov	174	209	239	211	833	63	13,146	202	271	261	191	925	69	13,355	182	—	—	—	182	-5%	-10%	—	—
Nootka Sound Prov	47	59	62	73	241	101	2,384	59	99	105	69	332	142	2,330	63	—	—	—	63	-9%	7%	—	—
North Cowichan Mun	520	684	725	651	2,580	94	27,361	655	761	754	591	2,761	101	27,368	667	—	—	—	667	13%	2%	—	—
North Saanich Mun	113	121	119	132	485	45	10,896	107	115	130	106	458	42	10,923	73	—	—	—	73	-31%	-32%	—	—
Oceanside Prov	254	339	343	326	1,262	57	22,155	323	425	568	359	1,675	74	22,502	334	—	—	—	334	-7%	3%	—	—
Outer Gulf Islands Prov	57	58	81	29	225	51	4,425	42	53	83	39	217	49	4,456	50	—	—	—	50	28%	19%	—	—
Parksville Mun	272	392	328	328	1,320	122	10,803	364	405	410	301	1,480	135	10,932	342	—	—	—	342	14%	-6%	—	—
Port Alberni Mun	686	859	737	813	3,095	169	18,350	676	818	1,003	895	3,392	186	18,235	899	—	—	—	899	0%	33%	—	—
Port Alberni Prov	107	148	144	154	553	66	8,371	102	162	169	159	592	71	8,315	162	—	—	—	162	2%	59%	—	—
Port Alice Prov	16	21	41	22	100	83	1,204	26	27	27	18	98	85	1,152	21	—	—	—	21	17%	-19%	—	—
Port Hardy ProvZZ5	220	128	292	241	881	146	6,049	230	238	284	239	991	166	5,956	219	—	—	—	219	-8%	-5%	—	—
Port McNeill Prov	92	93	95	137	417	83	4,999	116	113	136	126	491	98	5,020	165	—	—	—	165	31%	42%	—	—
Powell River Mun	380	476	489	523	1,868	139	13,480	536	478	516	402	1,932	144	13,407	419	—	—	—	419	4%	-22%	—	—
Powell River Prov	140	147	175	143	605	109	5,550	116	131	155	131	533	96	5,536	119	—	—	—	119	-9%	3%	—	—
Quadra Island Prov	29	42	58	38	167	44	3,824	31	43	48	33	155	42	3,708	42	—	—	—	42	27%	35%	—	—
Qualicum Beach Mun	170	159	137	145	611	84	7,250	133	125	167	116	541	74	7,294	112	—	—	—	112	-3%	-16%	—	—
Saltspring Island Prov	81	89	101	78	349	36	9,782	93	146	172	106	517	52	9,849	139	—	—	—	139	31%	49%	—	—
Sayward Prov	27	39	36	29	131	146	897	20	26	34	26	106	120	884	51	—	—	—	51	96%	155%	—	—
Shawnigan Lake Prov	178	202	217	201	798	50	15,828	179	238	250	189	856	54	15,953	216	—	—	—	216	14%	21%	—	—
Sidney Mun	142	166	181	148	637	56	11,355	146	161	169	141	617	54	11,372	149	—	—	—	149	6%	2%	—	—
Sidney Prov	27	87	49	53	216	73	2,977	49	53	56	57	215	72	2,997	41	—	—	—	41	-28%	-16%	—	—
Sooke Mun	310	254	267	225	1,056	115	9,192	214	240	263	268	985	106	9,305	208	—	—	—	208	-22%	-3%	—	—
Sooke Prov	111	97	103	126	437	106	4,136	77	84	109	75	345	83	4,165	76	—	—	—	76	1%	-1%	—	—
Texada Island Prov	10	16	14	19	59	50	1,183	20	31	28	14	93	79	1,180	19	—	—	—	19	36%	-5%	—	—
Tofino Prov	95	127	214	109	545	212	2,573	98	129	190	145	562	211	2,664	104	—	—	—	104	-28%	6%	—	—
Ucluelet Prov	50	88	129	75	342	155	2,211	42	79	116	71	308	138	2,234	84	—	—	—	84	18%	100%	—	—
View Royal Mun	129	183	174	148	634	82	7,762	146	128	164	162	600	76	7,868	185	—	—	—	185	14%	27%	—	—
West Shore Prov	96	121	140	97	454	50	9,005	104	116	155	121	496	54	9,108	122	—	—	—	122	1%	17%	—	—
<b>ISLAND DISTRICT</b>	<b>11,939</b>	<b>13,860</b>	<b>14,441</b>	<b>13,780</b>	<b>54,020</b>	<b>113</b>	<b>478,001</b>	<b>12,996</b>	<b>15,010</b>	<b>15,710</b>	<b>13,977</b>	<b>57,693</b>	<b>120</b>	<b>480,473</b>	<b>14,055</b>	<b>—</b>	<b>—</b>	<b>—</b>	<b>14,055</b>	<b>1%</b>	<b>8%</b>	<b>—</b>	<b>—</b>

# CRIMINAL CODE OFFENCES REPORTED — 1<sup>ST</sup> QUARTER 2004



NORTH DISTRICT	1QTR	2QTR	3QTR	4QTR	2002			1QTR	2QTR	3QTR	4QTR	2003			1QTR	2QTR	3QTR	4QTR	2004				
					CRIME RATE	POP	CRIME RATE					POP	CRIME RATE	POP					%CHG FROM 4Q/03	CRIME RATE	POP		
Alexis Creek Prov	51	72	75	51	249	127	1,962	68	69	98	65	300	153	1,957	54	—	—	—	54	-17%	-21%	—	—
Anahim Lake Prov	49	71	118	77	315	295	1,068	80	94	122	132	428	402	1,066	111	—	—	—	111	-16%	39%	—	—
Atlin Prov	17	29	31	31	108	186	582	23	16	17	11	67	112	596	5	—	—	—	5	-55%	-78%	—	—
Bella Bella Prov	235	230	236	310	1,011	673	1,502	235	279	246	219	979	666	1,471	233	—	—	—	233	6%	-1%	—	—
Bella Coola Prov	53	82	115	92	342	141	2,428	62	99	143	80	384	161	2,378	94	—	—	—	94	18%	52%	—	—
Burns Lake Prov	279	372	364	291	1,306	184	7,101	199	320	414	253	1,186	167	7,116	264	—	—	—	264	4%	33%	—	—
Chetwynd Prov	155	199	222	187	763	135	5,652	152	230	235	207	824	148	5,549	163	—	—	—	163	-21%	7%	—	—
Dawson Creek Mun	396	531	727	484	2,138	192	11,115	415	548	531	518	2,012	183	11,024	461	—	—	—	461	-11%	11%	—	—
Dawson Creek Prov	49	67	79	59	254	33	7,691	39	87	87	68	281	36	7,737	64	—	—	—	64	-6%	64%	—	—
Dease Lake Prov	67	123	129	88	407	299	1,362	78	115	99	67	359	259	1,385	60	—	—	—	60	-10%	-23%	—	—
Fort Nelson Prov	240	359	319	224	1,142	191	5,992	282	281	307	289	1,159	191	6,066	279	—	—	—	279	-3%	-1%	—	—
Fort St. James Prov	200	299	348	313	1,160	242	4,799	248	329	381	253	1,211	253	4,781	218	—	—	—	218	-14%	-12%	—	—
Fort St. John Mun	930	1,023	978	1,069	4,000	238	16,827	889	1,040	1,099	1,170	4,198	251	16,730	955	—	—	—	955	-18%	7%	—	—
Fort St. John Prov	123	198	205	170	696	56	12,360	117	200	265	171	753	60	12,478	149	—	—	—	149	-13%	27%	—	—
Fraser Lake Prov	88	114	90	79	371	106	3,511	73	75	76	25	249	72	3,467	34	—	—	—	34	36%	-53%	—	—
Granisle Prov	28	27	45	21	121	223	543	19	25	42	25	111	210	528	11	—	—	—	11	-56%	-42%	—	—
Houston Prov	81	78	93	91	343	74	4,632	107	93	109	75	384	84	4,588	68	—	—	—	68	-9%	-36%	—	—
Hudsons Hope Prov	21	25	30	24	100	67	1,496	14	38	33	29	114	76	1,508	27	—	—	—	27	-7%	93%	—	—
Kitimat Mun	140	198	184	168	690	65	10,578	164	235	196	219	814	78	10,432	232	—	—	—	232	6%	41%	—	—
Kitimat Prov	7	15	23	18	63	116	544	15	19	13	15	62	114	546	10	—	—	—	10	-33%	-33%	—	—
Lisims-Nass Valley Prov	66	114	148	128	456	252	1,812	71	154	160	111	496	272	1,822	86	—	—	—	86	-23%	21%	—	—
Mackenzie Mun	85	120	139	117	461	85	5,406	107	149	165	98	519	98	5,316	88	—	—	—	88	-10%	-18%	—	—
Mackenzie Prov	7	13	17	21	58	249	233	22	19	21	26	88	379	232	22	—	—	—	22	-15%	0%	—	—
Masset Prov	122	156	210	167	655	276	2,373	129	163	184	173	649	275	2,361	189	—	—	—	189	9%	47%	—	—
McBride Prov	27	36	76	37	176	80	2,191	26	49	40	25	140	65	2,165	49	—	—	—	49	96%	88%	—	—
New Hazelton Prov	225	222	330	243	1,020	161	6,343	227	351	430	275	1,283	203	6,332	258	—	—	—	258	-6%	14%	—	—
One Hundred Mile House Prov	191	233	333	263	1,020	76	13,459	189	314	374	291	1,168	87	13,414	189	—	—	—	189	-35%	0%	—	—
Prince George Mun	3,000	3,620	3,658	3,738	14,016	187	74,849	3,403	4,184	4,556	3,329	15,472	205	75,609	3,128	—	—	—	3,128	-6%	-8%	—	—
Prince George Prov	91	142	199	149	581	41	14,125	83	156	187	128	554	40	14,009	107	—	—	—	107	-16%	29%	—	—
Prince Rupert Mun	707	742	853	776	3,078	205	15,049	622	789	867	646	2,924	198	14,760	605	—	—	—	605	-6%	-3%	—	—
Prince Rupert Prov	64	61	76	71	272	125	2,183	53	100	89	65	307	142	2,164	60	—	—	—	60	-8%	13%	—	—
Queen Charlotte City Prov	55	68	104	67	294	107	2,742	56	98	123	89	366	134	2,726	73	—	—	—	73	-18%	30%	—	—
Quesnel Mun	441	629	602	531	2,203	213	10,347	548	763	679	659	2,649	260	10,198	611	—	—	—	611	-7%	11%	—	—
Quesnel Prov	162	193	264	202	821	57	14,512	198	300	305	212	1,015	70	14,482	171	—	—	—	171	-19%	-14%	—	—
Smithers Mun	287	344	475	350	1,456	258	5,643	325	564	398	333	1,620	294	5,513	325	—	—	—	325	-2%	0%	—	—
Smithers Prov	77	117	162	133	489	61	8,069	118	216	198	129	661	82	8,059	103	—	—	—	103	-20%	-13%	—	—
Stewart Prov	14	34	19	13	80	103	779	12	14	24	8	58	74	787	7	—	—	—	7	-13%	-42%	—	—
Takla Landing Prov	25	39	27	33	124	626	198	41	47	62	41	191	965	198	45	—	—	—	45	10%	10%	—	—
Terrace Mun	478	561	575	517	2,131	171	12,453	528	599	639	589	2,355	190	12,373	566	—	—	—	566	-4%	7%	—	—
Terrace Prov	114	198	211	162	685	83	8,225	135	174	170	128	607	73	8,269	163	—	—	—	163	27%	21%	—	—
Tsay Keh Dene Prov	74	65	95	43	277	687	403	49	80	83	47	259	636	407	53	—	—	—	53	13%	8%	—	—
Tumbler Ridge Prov	54	84	107	95	340	141	2,404	56	131	118	39	344	140	2,459	63	—	—	—	63	62%	13%	—	—
Valemount Prov	63	76	133	60	332	171	1,946	52	87	102	67	308	161	1,914	41	—	—	—	41	-39%	-21%	—	—
Vanderhoof Prov	196	222	253	249	920	107	8,561	173	269	254	248	944	111	8,506	191	—	—	—	191	-23%	10%	—	—
Wells Prov	2	9	19	8	38	88	433	2	9	11	8	30	71	425	8	—	—	—	8	0%	300%	—	—
Williams Lake Mun	594	843	828	702	2,967	257	11,558	599	707	711	809	2,826	247	11,422	762	—	—	—	762	-6%	27%	—	—
Williams Lake Prov	136	194	200	172	702	48	14,618	116	163	191	125	595	41	14,586	106	—	—	—	106	-15%	-9%	—	—
<b>NORTH DISTRICT</b>	<b>10,566</b>	<b>13,247</b>	<b>14,524</b>	<b>12,894</b>	<b>51,231</b>	<b>150</b>	<b>342,659</b>	<b>11,219</b>	<b>14,841</b>	<b>15,654</b>	<b>12,589</b>	<b>54,303</b>	<b>159</b>	<b>341,911</b>	<b>11,561</b>	<b>—</b>	<b>—</b>	<b>—</b>	<b>11,561</b>	<b>-8%</b>	<b>3%</b>	<b>—</b>	<b>—</b>



# CRIMINAL CODE OFFENCES REPORTED — 1<sup>st</sup> QUARTER 2004

LOWER MAINLAND DISTRICT	1QTR	2QTR	3QTR	4QTR	2002	CRIME RATE	POP	1QTR	2QTR	3QTR	4QTR	2003	CRIME RATE	POP	1QTR	2QTR	3QTR	4QTR	2004	1Q/04		CRIME RATE	POP
																				%CHG FROM 4Q/03	FROM 1Q/03		
Agassiz Prov	217	334	365	300	1,216	144	8,447	241	396	430	263	1,330	155	8,594	338	—	—	—	338	29%	40%	—	—
Boston Bar Prov	17	37	41	40	135	158	855	24	44	66	37	171	198	864	43	—	—	—	43	16%	79%	—	—
Bowen Island Prov	30	40	57	28	155	49	3,163	32	24	54	20	130	40	3,260	24	—	—	—	24	20%	-25%	—	—
Burnaby Mun	5,417	5,923	5,645	6,124	23,109	113	203,665	5,618	6,087	6,505	7,082	25,292	123	205,261	6,689	—	—	—	6,689	-6%	19%	—	—
Chilliwack Mun <sup>1</sup>	2,435	2,742	2,823	2,930	10,930	161	68,008	2,741	3,251	3,806	2,967	12,765	186	68,699	2,632	—	—	—	2,632	-11%	-4%	—	—
Chilliwack Prov	101	152	212	101	566	121	4,679	93	238	293	121	745	158	4,726	67	—	—	—	67	-45%	-28%	—	—
Coquitlam Mun <sup>1</sup>	2,919	2,848	3,063	3,266	12,096	100	121,357	3,021	3,296	3,739	3,710	13,766	112	122,712	3,182	—	—	—	3,182	-14%	5%	—	—
Coquitlam Prov	29	34	37	28	128	59	2,165	21	35	45	21	122	55	2,227	19	—	—	—	19	-10%	-10%	—	—
Hope Mun	307	344	413	337	1,401	218	6,435	320	409	528	396	1,653	257	6,431	353	—	—	—	353	-11%	10%	—	—
Hope Prov	43	80	64	55	242	186	1,299	43	51	97	68	259	197	1,312	57	—	—	—	57	-16%	33%	—	—
Langley City Mun	1,165	1,321	1,204	1,236	4,926	201	24,517	1,161	1,333	1,340	1,353	5,187	211	24,577	1,290	—	—	—	1,290	-5%	11%	—	—
Langley Township Mun <sup>1</sup>	2,305	2,537	2,928	2,795	10,565	116	91,160	2,347	3,084	2,938	3,200	11,569	126	91,893	2,701	—	—	—	2,701	-16%	15%	—	—
Maple Ridge Mun <sup>1</sup>	2,072	2,126	2,541	2,564	9,303	135	69,066	2,087	2,131	2,602	2,178	8,998	126	71,640	2,109	—	—	—	2,109	-3%	1%	—	—
Mission Mun	1,334	1,447	1,442	1,440	5,663	173	32,688	1,267	1,527	1,742	1,258	5,794	176	32,894	1,314	—	—	—	1,314	4%	4%	—	—
Mission Prov	142	196	212	155	705	141	4,984	107	174	206	110	597	119	5,033	111	—	—	—	111	1%	4%	—	—
North Vancouver City Mun <sup>1</sup>	1,237	1,256	1,346	1,251	5,090	106	48,020	1,284	1,278	1,400	1,279	5,241	108	48,493	1,350	—	—	—	1,350	6%	5%	—	—
North Vancouver District Mun <sup>1</sup>	1,181	1,255	1,507	1,341	5,284	61	86,972	1,305	1,472	1,570	1,279	5,626	65	87,160	1,379	—	—	—	1,379	8%	6%	—	—
North Vancouver Prov <sup>2</sup>	62	78	63	63	266	—	5	56	73	75	54	258	—	5	91	—	—	—	91	69%	63%	—	—
Pemberton Prov	101	114	104	72	391	113	3,461	72	91	92	97	352	97	3,620	66	—	—	—	66	-32%	-8%	—	—
Pitt Meadows Mun	332	327	382	324	1,365	86	15,887	333	383	350	411	1,477	91	16,148	331	—	—	—	331	-19%	-1%	—	—
Port Coquitlam Mun <sup>1</sup>	1,224	1,365	1,583	1,433	5,605	100	55,788	1,278	1,455	1,842	1,814	6,389	111	57,313	1,451	—	—	—	1,451	-20%	14%	—	—
Richmond Mun <sup>1,5</sup>	2,974	3,454	3,533	3,555	13,516	78	173,545	3,281	3,563	3,983	3,878	14,705	84	174,201	3,592	—	—	—	3,592	-7%	9%	—	—
Ridge Meadows Prov <sup>2</sup>	9	24	48	15	96	—	10	16	38	31	13	98	—	10	29	—	—	—	29	123%	81%	—	—
Sechelt Mun	185	259	310	262	1,016	124	8,193	252	201	212	194	859	104	8,281	176	—	—	—	176	-9%	-30%	—	—
Squamish Mun <sup>1</sup>	560	545	786	686	2,577	172	15,023	726	800	1,072	715	3,313	219	15,142	608	—	—	—	608	-15%	-16%	—	—
Squamish Prov	47	80	80	40	247	119	2,075	42	94	151	44	331	159	2,084	40	—	—	—	40	-9%	-5%	—	—
Sunshine Coast Prov	329	479	540	430	1,778	95	18,661	342	430	325	306	1,403	75	18,770	304	—	—	—	304	-1%	-11%	—	—
Surrey Mun	11,833	11,981	11,994	11,629	47,437	125	378,173	10,673	12,293	13,326	14,122	50,414	129	390,145	12,404	—	—	—	12,404	-12%	16%	—	—
Surrey Prov	20	32	26	23	101	126	803	21	32	41	28	122	153	800	20	—	—	—	20	-29%	-5%	—	—
University Prov	337	284	420	393	1,434	174	8,258	344	362	394	421	1,521	185	8,218	359	—	—	—	359	-15%	4%	—	—
Whistler Mun	780	474	515	443	2,212	235	9,432	723	600	523	460	2,306	243	9,480	592	—	—	—	592	29%	-18%	—	—
Whistler Prov	6	11	10	13	40	137	291	4	23	38	9	74	250	296	12	—	—	—	12	33%	200%	—	—
White Rock Mun	409	555	502	399	1,865	96	19,440	366	550	545	463	1,924	98	19,539	517	—	—	—	517	12%	41%	—	—
<b>LOWER MAINLAND DISTRICT</b>	<b>40,159</b>	<b>42,734</b>	<b>44,796</b>	<b>43,771</b>	<b>171,460</b>	<b>115</b>	<b>1,486,525</b>	<b>40,241</b>	<b>45,818</b>	<b>50,361</b>	<b>48,371</b>	<b>184,791</b>	<b>122</b>	<b>1,509,828</b>	<b>44,250</b>	<b>—</b>	<b>—</b>	<b>—</b>	<b>44,250</b>	<b>-9%</b>	<b>10%</b>	<b>—</b>	<b>—</b>

## CRIMINAL CODE OFFENCES REPORTED — 1<sup>st</sup> QUARTER 2004

INDEPENDENT FORCES	1QTR	2QTR	3QTR	4QTR	2002	CRIME RATE	POP	1QTR	2QTR	3QTR	4QTR	2003	CRIME RATE	POP	1QTR	2QTR	3QTR	4QTR	2004	1Q/04		CRIME RATE	POP
																				%CHG FROM 4q/03	FROM 1q/03		
Abbotsford Mun <sup>1</sup>	3,119	3,535	3,878	3,805	14,337	115	124,886	3,399	3,689	4,187	3,996	15,271	120	127,712	3,747	—	—	—	3,747	-6%	10%	—	—
Central Saanich Mun <sup>6</sup>	175	183	187	210	755	47	16,061	173	213	190	161	737	46	16,091	215	—	—	—	215	34%	24%	—	—
Delta Mun <sup>1</sup>	1,560	1,697	1,689	1,607	6,553	65	100,906	1,629	1,752	1,812	1,985	7,178	71	100,576	1,898	—	—	—	1,898	-4%	17%	—	—
Nelson City Mun	346	383	469	383	1,581	165	9,585	338	419	471	333	1,561	162	9,630	276	—	—	—	276	-17%	-18%	—	—
New Westminster Mun	2,196	2,086	2,205	2,071	8,558	149	57,529	2,112	1,994	2,222	2,846	9,174	154	59,426	2,347	—	—	—	2,347	-18%	11%	—	—
Oak Bay Mun <sup>6</sup>	209	232	214	258	913	50	18,428	236	334	278	483	1,331	73	18,207	286	—	—	—	286	-41%	21%	—	—
Port Moody Mun <sup>5</sup>	336	415	434	467	1,652	64	25,674	387	422	462	547	1,818	68	26,690	388	—	—	—	388	-29%	0%	—	—
Saanich Mun <sup>6</sup>	1,438	1,438	1,574	1,540	5,990	56	107,919	1,419	1,503	1,680	1,667	6,269	58	107,964	1,319	—	—	—	1,319	-21%	-7%	—	—
Vancouver Mun <sup>5</sup>	17,926	18,156	18,871	16,838	71,791	126	570,186	17,173	19,173	18,784	18,152	73,282	129	569,814	19,425	—	—	—	19,425	7%	13%	—	—
Victoria City Mun <sup>4,5</sup>	4,544	4,357	5,017	4,333	18,251	195	93,776	4,514	4,850	5,038	4,368	18,770	202	93,097	4,540	—	—	—	4,540	4%	1%	—	—
West Vancouver Mun <sup>1</sup>	742	909	1,009	815	3,475	77	45,399	829	874	915	761	3,379	75	45,212	764	—	—	—	764	0%	-8%	—	—
<b>INDEPENDENT FORCES</b>	<b>32,591</b>	<b>33,391</b>	<b>35,547</b>	<b>32,327</b>	<b>133,856</b>	<b>114</b>	<b>1,170,349</b>	<b>32,209</b>	<b>35,223</b>	<b>36,039</b>	<b>35,299</b>	<b>138,770</b>	<b>118</b>	<b>1,174,419</b>	<b>35,205</b>	<b>—</b>	<b>—</b>	<b>—</b>	<b>35,205</b>	<b>-0%</b>	<b>9%</b>	<b>—</b>	<b>—</b>

## CRIMINAL CODE OFFENCES REPORTED — 1<sup>st</sup> QUARTER 2004

FIRST NATIONS POLICE SERVICES	1QTR	2QTR	3QTR	4QTR	2002	CRIME RATE	POP	1QTR	2QTR	3QTR	4QTR	2003	CRIME RATE	POP	1QTR	2QTR	3QTR	4QTR	2004	1Q/04		CRIME RATE	POP
																				%CHG FROM 4q/03	FROM 1q/03		
Ditidaht FNAPS	7	8	9	11	35	182	192	13	8	8	9	38	196	194	4	—	—	—	4	-56%	-69%	—	—
Kitasoo-Xai'xais FNAPS	25	14	6	23	68	221	308	13	21	31	17	82	265	310	22	—	—	—	22	29%	69%	—	—
Stl'atl'imx FNAPS	104	125	153	112	494	189	2,620	129	126	140	126	521	196	2,655	128	—	—	—	128	2%	-1%	—	—
<b>FIRST NATIONS POLICE SERVICES</b>	<b>136</b>	<b>147</b>	<b>168</b>	<b>146</b>	<b>597</b>	<b>191</b>	<b>3,120</b>	<b>155</b>	<b>155</b>	<b>179</b>	<b>152</b>	<b>641</b>	<b>203</b>	<b>3,159</b>	<b>154</b>	<b>—</b>	<b>—</b>	<b>—</b>	<b>154</b>	<b>1%</b>	<b>-1%</b>	<b>—</b>	<b>—</b>

## CRIMINAL CODE OFFENCES REPORTED — 1<sup>st</sup> QUARTER 2004

PROVINCE	1QTR	2QTR	3QTR	4QTR	2002	CRIME RATE	POP	1QTR	2QTR	3QTR	4QTR	2003	CRIME RATE	POP	1QTR	2QTR	3QTR	4QTR	2004	1Q/04		CRIME RATE	POP
																				%CHG FROM 4q/03	FROM 1q/03		
<b>BRITISH COLUMBIA<sup>3</sup></b>	<b>108,988</b>	<b>121,132</b>	<b>129,496</b>	<b>120,872</b>	<b>480,488</b>	<b>117</b>	<b>4,114,981</b>	<b>113,171</b>	<b>130,788</b>	<b>140,654</b>	<b>128,410</b>	<b>513,023</b>	<b>124</b>	<b>4,146,580</b>	<b>121,402</b>	<b>—</b>	<b>—</b>	<b>—</b>	<b>121,402</b>	<b>-5%</b>	<b>7%</b>	<b>—</b>	<b>—</b>

## CRIMINAL CODE OFFENCES REPORTED — 1<sup>st</sup> QUARTER 2004

### FOOTNOTES

- <sup>1</sup> Population figures also include First Nations Reserve populations.
- <sup>2</sup> Provincial parks are located within the policing jurisdictions of North Vancouver Prov and Ridge Meadows Prov. The crime rates for both of these policing jurisdictions are substantially inflated due to small residential populations and the relatively large number of property crimes occurring within these parks. As a result, crime rates for these jurisdictions have not been calculated.
- <sup>3</sup> The BC total includes additional reporting from Canadian National Railway Police, Canadian Pacific Railway Police and other specialized or non-jurisdictional units.
- <sup>4</sup> Data shown for 2003 include estimates for Victoria, and Richmond. The estimates for Victoria cover the reporting period of August to December 2003, while the estimates for Richmond cover the reporting months of May and July 2003. The estimates are based on each department's 2002 reporting under the UCR Survey.
- <sup>5</sup> Data shown for 2004 include estimates for Vancouver, Victoria, Port Moody, and Richmond. The estimates cover the reporting period of January to March 2004 and are based on each department's 2003 reporting under the UCR Survey.
- <sup>6</sup> Data shown for 2004 include partial estimates for Saanich, Central Saanich, and Oak Bay. The estimates cover the reporting month of March 2004 and are based on each department's 2003 reporting under the UCR Survey.

### DATA QUALIFIERS

1. Criminal Code offences include CC: Person, Property, and Other Offences. CC: Person offences include the violent crimes of homicide, attempted murder, sexual and non-sexual assault, robbery, and abduction. CC: Property offences include the property crimes of break and enter, motor vehicle theft, theft, possession of stolen property, and fraud. CC: Other offences include the other crimes of prostitution, gaming and betting, offensive weapons, bail violations, disturb the peace, escape custody, indecent acts, kidnapping, public morals, obstruct police, prisoner at large, trespass at night, mischief and property damage as well as any Criminal Code offence not covered by a specific UCR offence category, e.g. breach of probation, computer/data mischief, criminal harassment, uttering threats, etc. Excluded from these Criminal Code offence data are offences under other federal statutes such as the Controlled Drug and Substances Act as well as offences under provincial statutes such as the Liquor Control and Licensing Act. In addition, the data do not include federal, provincial or municipal traffic offences or violations.
2. The crime data contained in this report have been recorded by the police on the Uniform Crime Reporting Survey (UCR). Offences are scored according to the UCR Scoring Rules. If a single criminal incident contains a number of violations of the law, then only the most serious one is recorded for UCR purposes. However, with the exception of robbery offences where one incident with multiple victims is scored as one offence, police record one offence for every victim of a "violent" crime. Criminal Code offences represents only those offences reported to, or discovered by police which, upon preliminary investigation, have been deemed to have occurred or been attempted; this data does not represent or imply a count of the number of charges laid, prosecutions conducted, informations sworn or convictions obtained. **All data shown for 2004 is considered preliminary and subject to adjustments.**
3. The crime rate is defined as the number of Criminal Code offences (excluding Traffic) per 1,000 population. Population figures are based on the results of Canada Census which is conducted every five years. Canada Census occurred in 2001. Population figures for intervening years are estimates based on Census data.
4. Caution should be used in the interpretation of the percentage changes in the volume of offences. If the number of recorded offences is small, the percentage change is often very large. As a result, the percentage change may exaggerate the actual change in volume, and therefore, as an indicator of the trend in the incidence of crime, it may be misleading.

SOURCES: Offence data from the Uniform Crime Reporting Survey (UCR);  
Population data from BCSTATS, Population Section, Ministry of Management Services, Province of British Columbia.

DATE: June 2, 2004.