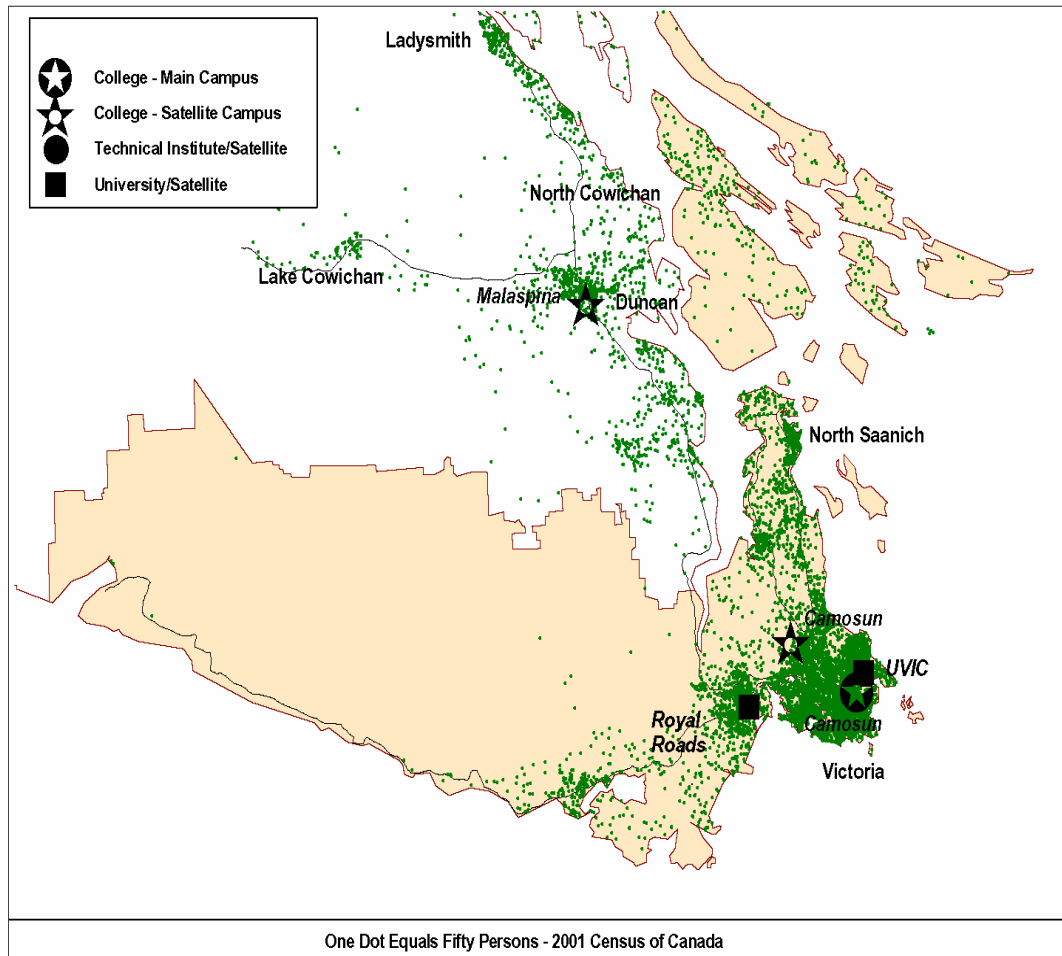


British Columbia: Regional Employment Projection Model

INDUSTRY AND OCCUPATION PROJECTIONS: 2006 -- 2010

CAMOSUN COLLEGE REGION



Background Information on Geographic Location of Population

Major Cities	Population 2005	% of Region	Land Area <small>Sq Km</small>	Population Density <small>Persons per Sq Km</small>
Saanich	110,387	31.4	103.4	1,067.3
Victoria	77,369	22.0	19.7	3,931.4
Langford	21,845	6.2	39.4	555.0
Oak Bay	18,313	5.2	10.4	1,764.3
Esquimalt	17,156	4.9	7.0	2,436.9
Central Saanich	16,821	4.8	41.4	406.4
Colwood	15,253	4.3	17.8	858.8
Sidney	11,862	3.4	5.0	2,353.6
North Saanich	11,274	3.2	37.1	303.6
Sooke	10,117	2.9	48.8	207.5
View Royal	8,382	2.4	14.5	578.9
Metchosin	5,353	1.5	71.3	75.1
Highlands	2,114	0.6	37.9	55.8
Rest of Region	24,777	7.1	1,909.5	13.0
Total Region	351,023	100.0	2,363.2	148.5
Region as % of BC	8.3		0.3	
Youth Age 15-29	67,885			
Youth in Region as % of BC	7.9			

Note to Users

All assumptions relating to employment are based on past conditions, modified wherever possible to take into consideration future changes. Consequently, the resulting employment projections are not necessarily what will be, but rather what could be, given the realization of these conditions. It is certainly possible that unforeseen changes in factors such as economic development, government policy, land use and zoning will affect future employment. Consequently, the projections should only be regarded as one possible scenario on the future size and distribution of the workforce.

Regional Employment Projection Model (REPM)

BC STATS is grateful for the support and financial assistance from the Ministry of Advanced Education in developing the model.

Contents

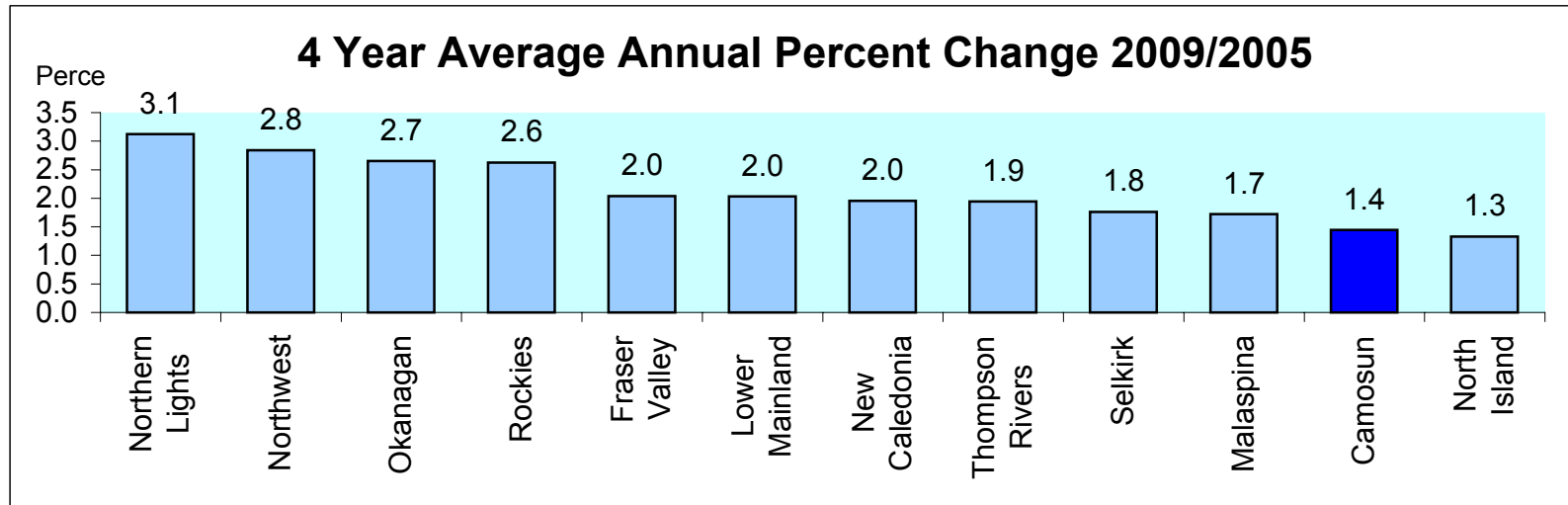
1. Projected Annual Growth in Employment Demand by College Region
2. Industrial Structure in the College Region Compared with BC, 2005 and 2009
3. Projected Annual Growth in Employment Demand by Industry
4. Occupational Structure in the College Region Compared with BC, 2005 and 2009
5. Projected Annual Growth Rates in Occupational Demand (1-digit)
6. Projected Annual Growth Rates in Occupational Demand (2-digits)

Appendices

1. Methodology
2. COPS Industry Conversion to REPM
3. Regional District to College Region Conversion for REPM
4. Projected Annual Growth Rates in Occupational Demand (3-digit)
5. Projected Annual Growth Rates in Occupational Demand (4-digit)

Projected Annual Growth in Employment Demand by College Region

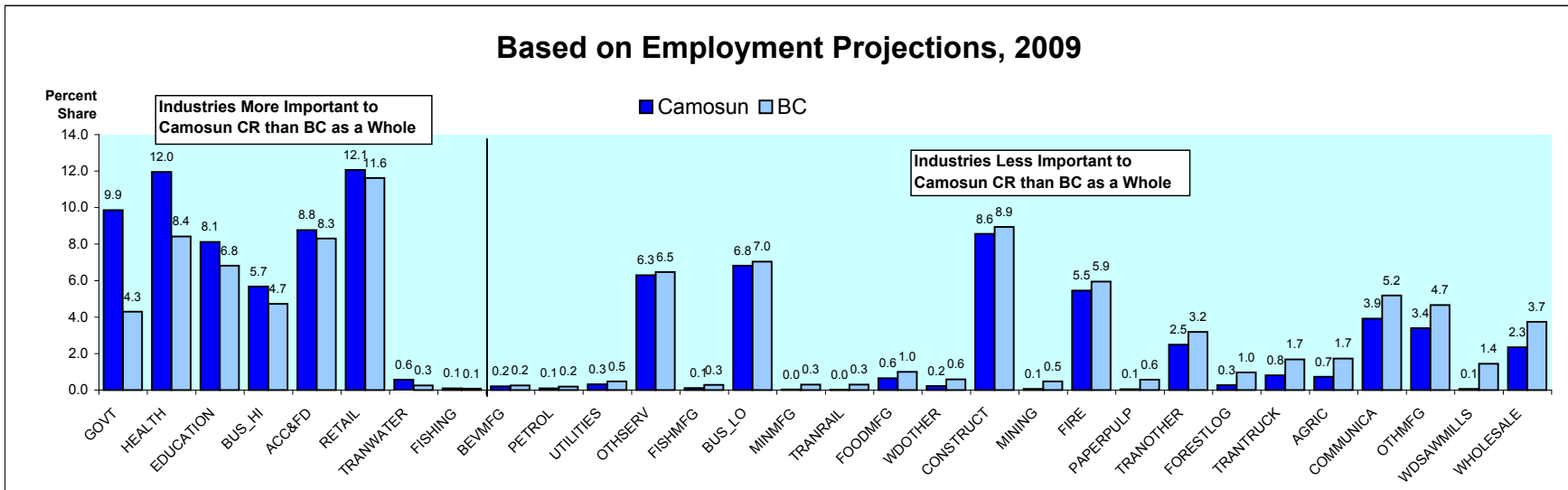
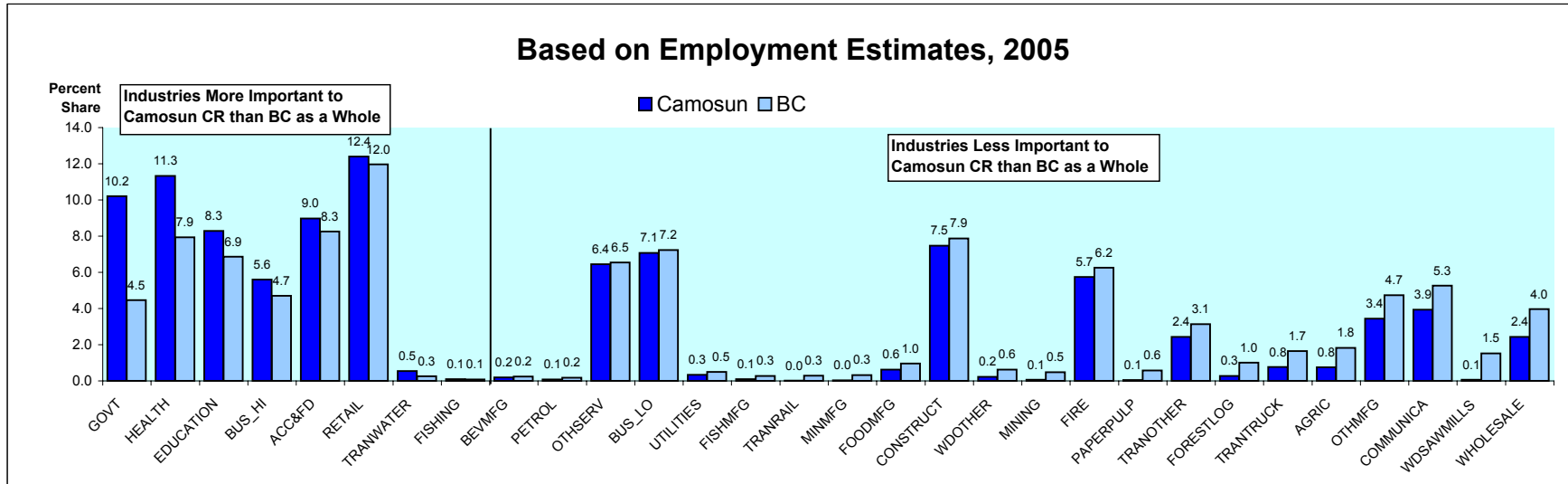
	Estimated Employment	Projected Employment Levels		Average Annual % Chg			Avg Annual % Chg Over 4 Years
	<u>2005</u>	<u>2009</u>	<u>2010</u>	<u>2007/2005</u>	<u>2009/2007</u>	<u>2010/2009</u>	<u>2009/2005</u>
	Northern Lights	34,708	39,046	39,220	3.1	2.9	0.4
Northwest	34,597	38,531	39,845	2.3	3.2	3.4	2.8
Okanagan	175,281	193,888	201,600	2.3	2.9	4.0	2.7
Rockies	37,929	41,910	43,335	2.3	2.8	3.4	2.6
Fraser Valley	120,271	130,067	133,725	1.8	2.2	2.8	2.0
Lower Mainland	1,182,258	1,278,495	1,327,306	2.1	1.9	3.8	2.0
New Caledonia	75,311	81,207	83,482	1.8	2.0	2.8	2.0
Thompson Rivers	85,651	92,310	94,914	1.8	2.0	2.8	1.9
Selkirk	36,829	39,421	40,304	1.5	2.0	2.2	1.8
Malaspina	109,580	117,129	120,067	1.4	2.0	2.5	1.7
Camosun	167,460	177,149	181,894	1.3	1.6	2.7	1.4
North Island	70,227	73,956	75,509	1.2	1.4	2.1	1.3
Total	2,130,101	2,303,108	2,381,200	2.0	2.0	3.4	2.0



Industrial Structure in the Camosun College Region Compared with BC

Percent Share of Employment by Industry

Ranked by the Percentage Point Difference in the Industry Share in the College Region Compared with BC



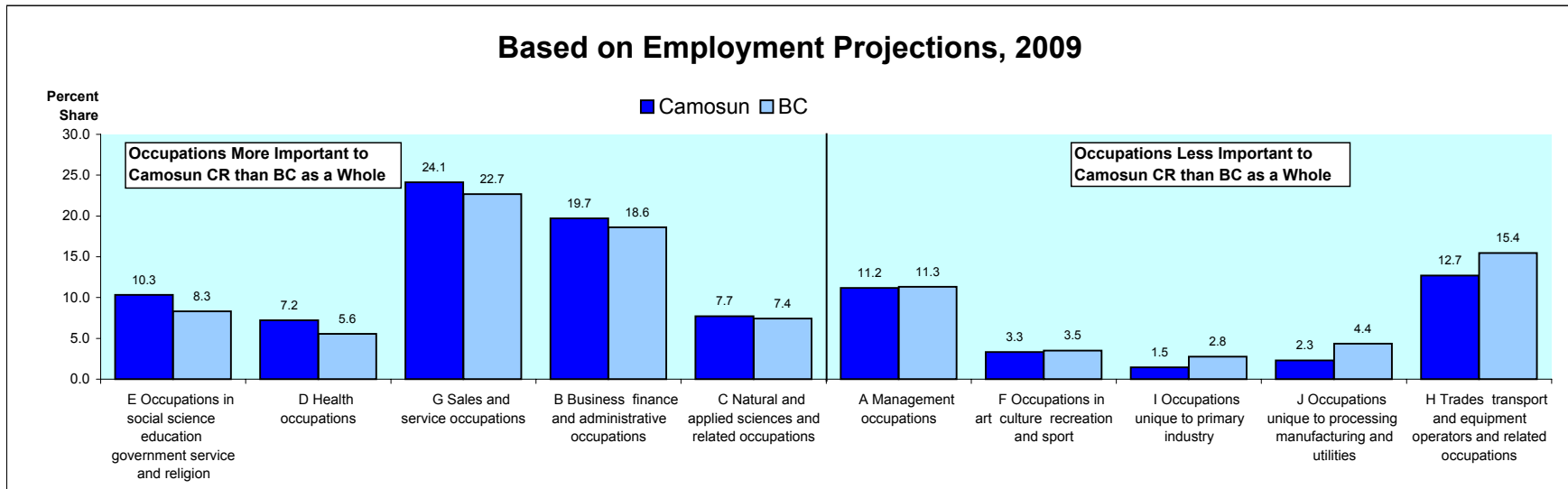
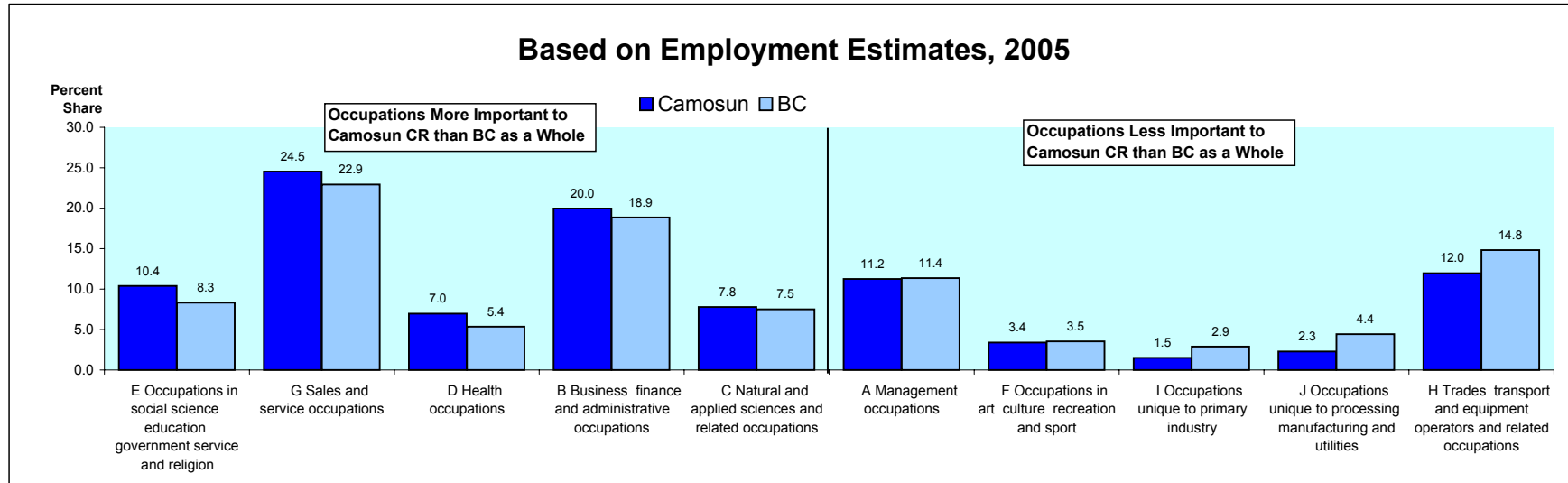
Camosun College Region

	Estimated	Projected		Average Annual % Chg			Avg Annual % Chg
	Employment	Employment Levels					Over 4 Years
	<u>2005</u>	<u>2009</u>	<u>2010</u>	<u>2007/2005</u>	<u>2009/2007</u>	<u>2010/2009</u>	<u>2009/2005</u>
ACC&FD	15,031	15,540	16,261	0.5	1.2	4.6	0.8
AGRIC	1,264	1,296	1,352	0.9	0.4	4.4	0.6
BEVMFG	324	361	365	4.0	1.7	1.0	2.9
BUS_HI	9,374	10,047	10,806	2.0	1.5	7.5	1.8
BUS_LO	11,851	12,072	12,319	0.7	0.3	2.0	0.5
COMMUNICA	6,586	6,927	6,998	1.3	1.3	1.0	1.3
CONSTRUCT	12,521	15,166	14,251	2.7	7.5	-6.0	5.3
EDUCATION	13,866	14,383	14,451	0.7	1.2	0.5	0.9
FIRE	9,607	9,675	10,065	0.7	-0.4	4.0	0.2
FISHING	156	166	177	1.6	1.4	7.1	1.5
FISHMFG	173	193	195	4.0	1.7	1.0	2.9
FOODMFG	1,044	1,151	1,158	3.5	1.5	0.6	2.6
FORESTLOG	456	468	464	1.8	-0.4	-0.9	0.7
GOVT	17,094	17,461	17,562	0.5	0.6	0.6	0.5
HEALTH	18,977	21,181	21,898	2.8	2.8	3.4	2.9
MINING	113	115	117	0.7	0.5	1.9	0.6
MINMFG	54	54	54	0.5	0.1	0.2	0.3
OTHMFG	5,758	6,001	6,507	0.7	1.4	8.4	1.1
OTHSERV	10,793	11,154	11,701	0.8	0.9	4.9	0.8
PAPERPULP	89	96	96	2.2	1.2	0.5	1.8
PETROL	134	162	151	6.1	3.9	-6.3	5.2
PETROLMFG	20	-	-	-	-	-	-
RETAIL	20,776	21,367	22,513	1.1	0.3	5.4	0.7
TRANOTHER	4,082	4,420	4,494	1.9	2.2	1.7	2.1
TRANRAIL	17	19	20	2.4	2.2	2.2	2.4
TRANTRUCK	1,287	1,437	1,466	3.0	2.7	2.0	2.9
TRANWATER	907	1,000	1,019	2.5	2.6	1.9	2.6
UTILITIES	565	569	574	0.6	-0.3	0.8	0.2
WDOTHER	374	383	403	0.4	0.8	5.2	0.6
WDSAWMILLS	97	100	105	0.4	0.8	5.2	0.6
WHOLESALE	4,074	4,145	4,309	0.1	0.8	3.9	0.4
ALL INDUSTRIES	167,460	177,149	181,894	1.3	1.6	2.7	1.4

Occupational Structure in the Camosun College Region Compared with BC

Percent Share of Employment by Occupation

Ranked by the Percentage Point Difference in the Occupation Share in the College Region Compared with BC



Camosun College Region

Projected Annual Growth Rates in Occupational Demand

	Estimated Employment	Average Annual % Change			Avg Annual % Chg Over 4 Years
	<u>2005</u>	<u>2007/2005</u>	<u>2009/2007</u>	<u>2010/2009</u>	<u>2009/2005</u>
All occupations	167,460	1.3	1.6	2.7	1.4
A Management occupations	18,835	1.1	1.4	2.9	1.3
B Business finance and administrative occupations	33,417	1.1	1.0	2.9	1.1
C Natural and applied sciences and related occupations	13,031	1.2	1.2	3.1	1.2
D Health occupations	11,658	2.4	2.3	3.7	2.4
E Occupations in social science education government service and religion	17,393	1.2	1.4	2.0	1.3
F Occupations in art culture recreation and sport	5,655	1.1	1.1	2.4	1.1
G Sales and service occupations	41,103	1.0	1.0	4.0	1.0
H Trades transport and equipment operators and related occupations	20,050	1.9	4.0	-0.9	3.0
I Occupations unique to primary industry	2,489	1.1	0.8	2.7	1.0
J Occupations unique to processing manufacturing and utilities	3,834	1.4	1.5	4.6	1.5

Projected Annual Growth Rates in Occupational Demand (2-digits)

Camosun College Region

Projected Annual Growth Rates in Occupational Demand

	Estimated Employment	Average Annual % Change			Avg Annual % Chg Over 4 Years
	<u>2005</u>	<u>2007/2005</u>	<u>2009/2007</u>	<u>2010/2009</u>	<u>2009/2005</u>
All occupations	167,460	1.3	1.6	2.7	1.4
A2 Managers in retail trade food and accommodation services	6,538	0.9	0.8	4.8	0.8
A3 Other managers n.e.c.	5,900	1.4	2.4	0.7	1.9
B0 Professional occupations in business and finance	5,835	1.0	0.6	3.6	0.8
B1 Finance and insurance administration occupations	2,992	1.1	1.1	3.2	1.1
B2 Secretaries	4,267	1.4	1.6	2.6	1.5
B3 Administrative and regulatory occupations	3,621	1.1	1.3	2.3	1.3
B4 Clerical supervisors	705	1.0	0.8	2.6	0.9
B5 Clerical occupations	15,994	1.1	1.0	2.8	1.1
C0 Professional occupations in natural and applied sciences	7,543	1.2	1.0	3.6	1.1
C1 Technical occupations related to natural and applied sciences	5,489	1.2	1.4	2.5	1.3
D0 Professional occupations in health	2,700	2.3	2.2	3.7	2.3
D1 Nurse supervisors and registered nurses	3,145	2.5	2.5	3.5	2.6
D2 Technical and related occupations in health	2,865	2.2	2.2	3.7	2.3
D3 Assisting occupations in support of health services	2,945	2.4	2.4	3.7	2.4
E0 Judges, lawyers, psychologists, social workers, ministers of religion & policy/program officers	5,176	1.3	1.2	3.2	1.3
E1 Teachers and professors	7,439	0.7	1.2	0.6	0.9
E2 Paralegals, social services workers & occup. in educ. & religion n.e.c.	4,777	1.8	1.9	3.0	1.9
F0 Professional occupations in art and culture	2,284	1.1	1.1	1.8	1.1
F1 Technical occupations in art, culture, recreation and sport	3,367	1.1	1.1	2.8	1.1
G0 Sales and service supervisors	1,164	1.0	1.0	4.4	1.0
G1 Wholesale, technical, insurance, real estate sales specialists & retail, wholesale and grain buyers	2,659	0.8	0.7	3.9	0.7
G2 Retail salespersons and sales clerks	6,728	1.1	0.5	5.0	0.8
G3 Cashiers	3,080	1.0	0.5	4.9	0.8
G4 Chefs and cooks	3,006	0.7	1.3	4.3	1.0
G5 Occupations in food and beverage service	3,755	0.5	1.2	4.5	0.9

Camosun College Region

Projected Annual Growth Rates in Occupational Demand

	Estimated Employment	Average Annual % Change			Avg Annual % Chg Over 4 Years
	<u>2005</u>	<u>2007/2005</u>	<u>2009/2007</u>	<u>2010/2009</u>	<u>2009/2005</u>
G6 Occupations in protective services	3,179	0.6	0.6	0.9	0.6
G7 Occup. in travel & accommodation incl. attendants in recreation & sport	1,436	1.2	1.6	2.5	1.4
G8 Childcare and home support workers	3,970	1.6	1.8	2.8	1.7
G9 Sales and service occupations n.e.c.	12,122	1.0	1.1	4.2	1.1
H0 Contractors and supervisors in trades and transportation	1,208	2.1	5.2	-2.7	3.7
H1 Construction trades	5,087	2.4	6.5	-4.7	4.6
H2 Stationary engineers, power stn operators & electrical trades & telecom.	1,533	1.9	4.3	-2.3	3.2
H3 Machinists, metal forming, shaping and erecting occupations	1,281	1.3	3.1	2.5	2.3
H4 Mechanics	2,788	1.2	1.6	3.2	1.4
H5 Other trades n.e.c.	1,212	1.2	2.2	2.9	1.7
H6 Heavy equipment and crane operators including drillers	939	2.2	5.6	-3.9	4.0
H7 Transport equipment operators & related workers, excl. labourers	3,379	1.9	2.2	1.9	2.1
H8 Trades helpers, construction and transport labourers & related	2,623	1.8	3.9	-1.0	2.9
I0 Occupations unique to agriculture, excluding labourers	1,317	0.9	0.6	3.8	0.7
I1 Occup. unique to forestry ops, mining, oil & gas extraction, fishing excl. labourers	437	1.7	1.1	1.6	1.4
I2 Primary production labourers	738	1.1	1.1	1.4	1.1
J0 Supervisors in manufacturing	292	1.6	1.6	4.3	1.6
J1 Machine operators in manufacturing	1,580	1.5	1.4	4.6	1.5
J2 Assemblers in manufacturing	944	0.9	1.7	5.8	1.3
J3 Labourers in processing, manufacturing and utilities	1,015	1.8	1.4	3.7	1.6

Appendix 1

Summary of Methodology for the British Columbia Regional Employment Projection Model (REPM)

The methodology used in the model has come largely from previous work on community dependencies carried out earlier by BC STATS. The fundamental premise is that the economy of a region can be represented by income flows that can be classified as “basic” (or driver) and “non-basic” (or support) depending on the source of the income.

The model calculates indirect employment effects from employment changes in the basic sectors using multipliers based in inter-industry linkages from the British Columbia Input-Output Model. Similarly, non-basic, or induced effects are calculated using an income-to-non-basic-jobs ratio.

The current version of the model is benchmarked to the 2001 Census employment by Regional District, and is projected forward up to the most up-to-date annual employment data from the Labour Force Survey. The growth rates from the Labour Force Survey (LFS) at the provincial level for the basic industries are used to project growth down to the Regional District level. The model then calculates the indirect jobs based on the Regional District specific multipliers. The direct and indirect employment levels are then used to calculate the wages and salaries earned in the basic industries which in turn are converted to employment in the non-basic industries through the income to support-industry job multipliers. As well, transfer payments and investment income are also converted to employment in the non-basic industries using the same multipliers. The output from the model is then benchmarked to the LFS industry numbers at the BC level as well as to the LFS regional employment numbers for the Development Regions and the Capital and Greater Vancouver Regional Districts. In the current version of the model, the employment numbers are reconciled up to the 2005 annual averages from the LFS.

Once the model is brought up to the most current employment levels, then the forecast is carried out for five to ten years further. The industrial employment projections from the Canadian Occupational Projection System (COPS) are now used as the source data for the industrial growth, both in determining the growth rates in the direct employment and then as a benchmark on which to reconcile the industrial employment generated by the model.

While the total employment is forced to the COPS employment levels, there is leeway to adjust growth rates by industry across the sub-provincial regions. There are some standard variables that are used to differentiate the outlook for

the regions. For example, the growth in the education sector is dictated by the projected K-12 and post-secondary population growth in the relevant age groups. Government Services is projected in line with the total population projections for the Regional Districts. Employment in the Health Sector is so often governed by the growth in the senior's population as are the transfer payments flowing in. (CPP and OAS is a large component of transfer payments). As well, pensions from private pension plans are considered investment income meaning seniors receive a high proportion of the total investment income in a region.

An important determining factor of growth by region is the major projects coming on stream in the outlook timeframe. Firstly they impact construction employment and secondly many will impact specific industries once they move into the production phase. In BC, we are dealing with the preparations for the 2010 Winter Games so many of the construction occupations will be in short supply.

The intent is to update the REPM annually, based on another year of LFS data plus a new COPS forecast. Currently, there is a demand for economic forecasts by occupation at the college region level. College Regions are aggregations of sub-sets of Regional Districts. Occupational forecasts are being produced at the college region level. In the appendix there is a conversion table which outlines which Regional District belongs to which College Region.

The model is only as good as the input data assumptions. Our reliance on good quality data from COPS is very important. Users of the data who perceive any problems with the assumptions in the model or question the quality of any of the data series being used should contact BC STATS at bcstats@gov.bc.ca.

May 2, 2006

Appendix 2

COPS INDUSTRY CONVERSION TO REPM

REPM INDUSTRY	COPS INDUSTRY	% of COPS INDUSTRY
ACC&FD	31 Accommodation and food services	100
AGRIC	1 Agriculture	100
BEVMFG	9 Food and Beverage Products	16
BUS_HI	25 Computer System Design Services	100
BUS_HI	24 Professional Business Services	50
BUS_HI	26 Other Professional Services	50
BUS_LO	27 Management, Administrative and Other Support	100
BUS_LO	24 Professional Business Services	50
BUS_LO	26 Other Professional Services	50
COMMUNICA	30 Information, culture and recreation	100
CONSTRUCT	8 Construction	100
EDUCATION	28 Educational Services	100
FIRE	23 Finance, Insurance, Real Estate and Leasing	100
FISHING	3 Fishing, Hunting and Trapping	100
FISHMFG	9 Food and Beverage Products	18
FOODMFG	9 Food and Beverage Products	66
FORESTLOG	2 Forestry and Logging with support activities	100
GOVT	33 Public administration	100
HEALTH	29 Health Care and Social Assistance	75
MINING	5 Mining (except Oil and Gas)	100
MINING	6 Support Activities for Mining and Oil and Gas Extraction	67
MINMFG	14 Manufactured Mineral Products	50
OTHMFG	12 Printing and Related Support Activities	100
OTHMFG	13 Rubber, Plastics and Chemicals	100
OTHMFG	14 Manufactured Mineral Products	50
OTHMFG	15 Metal Fabrication and Machinery (excluding electrical)	100
OTHMFG	16 Computer, Electronic and Electrical Products	100
OTHMFG	17 Motor Vehicle, Body, Trailer & Parts Manufacturing	100
OTHMFG	18 Other Transportation Equipment Manufacturing	100
OTHSERV	29 Health Care and Social Assistance	25
OTHSERV	32 Other services	100

COPS INDUSTRY CONVERSION TO REPM

REPM INDUSTRY	COPS INDUSTRY	% of COPS INDUSTRY
PAPERPULP	11 Paper Manufacturing	100
PETROL	4 Oil and Gas Extraction	100
PETROL	6 Support Activities for Mining and Oil and Gas Extraction	33
PETROLMFG	19 Other Manufacturing	7
RETAIL	21 Retail Trade	100
TRANOTHER	22 Transportation and Warehousing	59
TRANRAIL	22 Transportation and Warehousing	5
TRANTRUCK	22 Transportation and Warehousing	31
TRANWATER	22 Transportation and Warehousing	5
UTILITIES	7 Utilities	100
WDOTHER	10 Wood Product Manufacturing	29
WDSAWMILLS	10 Wood Product Manufacturing	71
WHOLESALE	20 Wholesale Trade	100

Appendix 3

REGIONAL DISTRICT TO COLLEGE REGION CONVERSION FOR REPM

COLLEGE REGION	REGIONAL DISTRICT #	REGIONAL DISTRICT NAME	% of REGIONAL DISTRICT
CAMOSUN	17	Capital	100
FRASER VALLEY	9	Fraser Valley	100
LOWER MAINLAND	15	Greater Vancouver	100
LOWER MAINLAND	29	Sunshine Coast	100
LOWER MAINLAND	31	Squamish Lillooet	87
MALASPINA	19	Cowichan Valley	100
MALASPINA	21	Nanaimo	100
MALASPINA	27	Powell River	100
NEW CALEDONIA	41	Cariboo	37
NEW CALEDONIA	51	Bulkley Nechako	61
NEW CALEDONIA	53	Fraser-Fort George	100
NORTH ISLAND	23	Alberni-Clayoquot	100
NORTH ISLAND	25	Comox Strathcona	100
NORTH ISLAND	43	Mount Waddington	100
NORTH ISLAND	45	Central Coast	100
NORTHERN LIGHTS	49	Kitimat Stikine	2
NORTHERN LIGHTS	55	Peace River	100
NORTHERN LIGHTS	57	Stikine	100
NORTHERN LIGHTS	59	Northern Rockies	100
NORTHWEST	47	Skeena-Queen Charlotte	100
NORTHWEST	49	Kitimat Stikine	98
NORTHWEST	51	Bulkley Nechako	39
OKANAGAN	7	Okanagan-Similkameen	100
OKANAGAN	35	Central Okanagan	100
OKANAGAN	37	North Okanagan	100
OKANAGAN	39	Columbia Shushwap	85
ROCKIES	1	East Kootenay	100
ROCKIES	3	Central Kootenays	20
ROCKIES	39	Columbia Shushwap	15
SELKIRK	3	Central Kootenays	80
SELKIRK	5	Kootenay Boundary	100
THOMPSON RIVERS	31	Squamish Lillooet	13
THOMPSON RIVERS	33	Thompson Nicola	100
THOMPSON RIVERS	41	Cariboo	63

Appendix 4

Projected Annual Growth Rates in Occupational Demand (3-digit)

Camosun College Region

Projected Annual Growth Rates in Occupational Demand

	Estimated Employment	Average Annual % Change			Avg Annual % Chg Over 4 Years
	<u>2005</u>	<u>2007/2005</u>	<u>2009/2007</u>	<u>2010/2009</u>	<u>2009/2005</u>
	All occupations	167,460	1.3	1.6	2.7
A01.001 Legislators and Senior Management	2,393	1.1	1.3	2.5	1.2
A11.011 Administrative Services Managers	1,466	1.0	1.0	2.9	1.0
A12.021 Managers in Engineering, Architecture, Science & Information Systems	759	1.1	1.0	3.5	1.1
A13.061 Sales, Marketing and Advertising Managers	1,284	0.9	1.1	3.8	1.0
A14.072 Facility Operation and Maintenance Managers	490	1.1	1.4	2.5	1.3
A21.062 Managers in Retail Trade	4,170	1.1	0.5	5.0	0.8
A22.063 Managers in Food Service and Accommodation	2,372	0.5	1.2	4.5	0.9
A30.012 Managers in Financial and Business Services	1,369	0.8	-0.1	3.8	0.4
A31.013 Managers in Communication (Except Broadcasting)	127	1.3	1.4	1.6	1.4
A32.031 Managers in Health, Education, Social and Community Services	1,101	1.3	1.6	1.8	1.5
A33.041 Managers in Public Administration	247	0.7	0.7	1.1	0.7
A34.051 Managers in Art, Culture, Recreation and Sport	236	1.1	1.2	1.6	1.1
A35.064 Managers in Protective Service	344	0.5	0.6	0.6	0.5
A36.065 Managers in Other Services	242	1.0	1.3	3.3	1.2
A37.071 Managers in Construction and Transportation	1,609	2.5	6.2	-4.3	4.5
A38.081 Managers in Primary Production (Except Agriculture)	78	1.6	1.1	0.8	1.3
A39.091 Managers in Manufacturing and Utilities	547	1.2	1.4	5.5	1.3
B01.111 Auditors, Accountants and Investment Professionals	4,717	1.0	0.5	3.7	0.8
B02.112 Human Resources and Business Service Professionals	1,120	1.1	0.9	3.6	1.0
B11.123 Finance and Insurance Administrative Occupations	2,990	1.2	1.1	3.2	1.1
B21.124 Secretaries, Records and Transcriptionists	4,267	1.3	1.6	2.6	1.5
B31.122 Administrative and Regulatory Occupations	3,618	1.1	1.3	2.3	1.2
B41.121 Clerical Supervisors	706	1.0	0.8	2.7	0.9
B51.141 Clerical Occupations, General Office Skills	5,569	1.3	1.3	2.6	1.3
B52.142 Office Equipment Operators	669	1.0	0.9	2.5	0.9
B53.143 Finance and Insurance Clerks	4,038	0.9	0.5	3.3	0.7
B54.144 Administrative Support Clerks	1,207	1.1	1.2	2.2	1.2
B55.145 Library Correspondence and Related Information Clerks	2,116	0.9	0.7	2.3	0.8

Camosun College Region

Projected Annual Growth Rates in Occupational Demand

	Estimated Employment	Average Annual % Change			Avg Annual % Chg Over 4 Years
	<u>2005</u>	<u>2007/2005</u>	<u>2009/2007</u>	<u>2010/2009</u>	<u>2009/2005</u>
B56.146 Mail and Message Distribution Occupations	846	1.5	1.6	2.4	1.6
B57.147 Recording, Scheduling and Distributing Occupations	1,555	1.2	1.2	3.4	1.2
C01.211 Physical Science Professionals	346	1.2	0.9	3.2	1.1
C02.212 Life Science Professionals	657	1.0	0.8	2.6	0.9
C03.213 Civil, Mechanical, Electrical and Chemical Engineers	1,364	1.3	1.3	3.4	1.3
C04.214 Other Engineers	701	1.3	1.1	3.9	1.2
C05.215 Architects, Urban Planners and Land Surveyors	713	1.2	1.2	3.1	1.2
C06.216 Mathematicians, Statisticians and Actuaries	53	1.2	1.0	3.2	1.1
C07.217 Computer and Information Systems Professionals	3,709	1.2	0.9	3.9	1.0
C11.221 Technical Occupations in Physical Sciences	194	1.3	1.0	2.8	1.2
C12.222 Technical Occupations in Life Sciences	780	0.9	0.7	1.9	0.8
C13.223 Technical Occupations in Civil, Mechanical & Industrial Engineering	533	1.6	3.2	0.3	2.5
C14.224 Technical Occupations in Electronics and Electrical Engineering	926	1.1	1.4	3.1	1.3
C15.225 Technical Occupations in Architecture, Drafting, Surveying & Mapping	893	1.2	1.1	3.6	1.2
C16.226 Other Technical Inspectors and Regulatory Officers	433	1.1	1.4	1.7	1.3
C17.227 Transportation Officers and Controllers	565	1.9	2.1	1.7	2.0
C18.228 Technical Occupations in Computer and Information Systems	1,160	1.1	0.8	3.3	1.0
D01.311 Physicians Dentists and Veterinarians	1,435	2.4	2.4	3.6	2.5
D02.312 Optometrists, Chiropractors & Other Health Diagnosing/Treating Profs.	183	2.5	2.5	3.6	2.5
D03.313 Pharmacists, Dietitians and Nutritionists	438	1.7	1.3	4.5	1.5
D04.314 Therapy and Assessment Professionals	643	2.4	2.5	3.4	2.5
D11.315 Nurse Supervisors and Registered Nurses	3,146	2.5	2.5	3.6	2.6
D21.321 Medical Technologists and Technicians (Except Dental Health)	1,169	2.2	2.2	3.8	2.2
D22.322 Technical Occupations in Dental Health Care	333	2.2	2.3	4.4	2.3
D23.323 Other Technical Occupations in Health Care (Except Dental)	1,362	2.3	2.3	3.6	2.3
D31.341 Assisting Occupations in Support of Health Services	2,947	2.4	2.4	3.7	2.4
E01.411 Judges, Lawyers and Quebec Notaries	1,385	1.2	0.8	4.0	1.0
E02.415 Psychologists, Social Workers, Counsellors, Clergy & Probation Officers	1,873	1.6	1.7	3.0	1.7
E03 Policy and program officers researchers and consultants	1,924	1.1	1.0	2.7	1.1
E11.412 University Professors and Assistants	997	0.7	1.2	0.6	0.9

Camosun College Region

Projected Annual Growth Rates in Occupational Demand

	Estimated Employment	Average Annual % Change			Avg Annual % Chg Over 4 Years
	<u>2005</u>	<u>2007/2005</u>	<u>2009/2007</u>	<u>2010/2009</u>	<u>2009/2005</u>
E12.413 College and Other Vocational Instructors	1,190	0.7	1.1	0.8	0.9
E13.414 Secondary and Elementary School Teachers & Educational Counsellors	5,254	0.7	1.2	0.5	0.9
E21.421 Paralegals, Social Services Workers & Occupations in Education & Religion n.e.c.	4,777	1.8	1.9	3.0	1.9
F01 Librarians, archivists, conservators and curators	162	1.1	1.2	1.3	1.1
F02.512 Writing, Translating and Public Relations Professionals	988	1.1	1.0	2.7	1.1
F03.513 Creative and Performing Artists	1,137	1.0	1.2	1.1	1.1
F11.521 Technical Occupations in Libraries, Archives Museums & Art Galleries	207	1.1	1.3	1.0	1.2
F12.522 Photographers, Graphic Arts Technicians & Technical & coordinating Occupations in Motion Pictures Broadcasting & Performing	665	1.2	1.1	2.7	1.2
F13.523 Announcers and Other Performers	130	1.1	1.2	1.7	1.2
F14.524 Creative Designers and Craftspersons	1,367	1.2	1.0	4.4	1.1
F15.525 Athletes, Coaches, Referees and Related Occupations	998	1.0	1.1	1.4	1.1
G01.621 Sales and Service Supervisors	1,167	1.0	1.0	4.4	1.0
G11.641 Sales Representatives, Wholesale Trade	1,150	0.7	1.0	3.8	0.9
G12.622 Technical Sales Specialists, Wholesale Trade	425	0.8	1.2	3.9	1.0
G13.623 Insurance and Real Estate Sales Occupations and Buyers	1,085	0.8	0.0	3.9	0.4
G21.642 Retail Salespersons and Sales Clerks	6,726	1.1	0.5	5.0	0.8
G31.661 Cashiers	3,082	1.0	0.5	4.9	0.8
G41.624 Chefs and Cooks	3,007	0.7	1.3	4.3	1.0
G51.645 Occupations in Food and Beverage Service	3,755	0.5	1.2	4.5	0.9
G61.626 Police Officers and Fire-fighters	1,659	0.5	0.6	0.6	0.5
G62.646 Other Occupations in Protective Service	1,279	0.6	0.6	0.9	0.6
G63.665 Security Guards and Related Occupations	239	1.1	1.2	2.6	1.1
G71.643 Occupations in Travel and Accommodation	892	1.3	1.8	2.9	1.6
G72.644 Tour and Recreational Guides and Casino Occupations	270	1.2	1.3	1.6	1.3
G73.667 Other Occupations in Travel Accommodation, Amusement & Recreation	273	1.0	1.2	2.0	1.1
G81.647 Childcare and Home Support Workers	3,967	1.6	1.8	2.8	1.7
G91.627 Technical Occupations in Personal Service	874	0.8	0.9	4.9	0.9
G92.648 Other Occupations in Personal Service	490	0.9	0.8	4.7	0.8

Camosun College Region

Projected Annual Growth Rates in Occupational Demand

	Estimated Employment	Average Annual % Change			Avg Annual % Chg Over 4 Years
	<u>2005</u>	<u>2007/2005</u>	<u>2009/2007</u>	<u>2010/2009</u>	<u>2009/2005</u>
G93.666 Cleaners	3,053	1.1	1.5	3.0	1.3
G94.625 Butchers and Bakers	796	1.5	0.7	4.2	1.1
G96.664 Food Counter Attendants, Kitchen Helpers & Related Occupations	3,829	0.8	1.4	4.3	1.1
G97.662 Other Sales and Related Occupations	2,573	1.1	0.4	5.2	0.8
G98.668 Other Elemental Service Occupations	509	1.1	1.3	4.1	1.2
H01.721 Contractors and Supervisors, Trades and Related Workers	1,157	2.1	5.3	-2.9	3.8
H02.722 Supervisors, Railway and Motor Transportation Occupations	47	1.9	2.1	1.6	2.1
H11.725 Plumbers, Pipefitters and Gas Fitters	727	2.4	6.3	-4.6	4.5
H12.727 Carpenters and Cabinetmakers	2,165	2.3	6.3	-4.2	4.5
H13.728 Masonry and Plastering Trades	798	2.6	7.2	-5.6	5.1
H14.729 Other Construction Trades	1,397	2.5	6.6	-4.8	4.7
H21.724 Electrical Trades and Telecommunications Occupations	1,429	2.0	4.6	-2.6	3.3
H22.735 Stationary Engineers and Power Station and System Operators	104	1.4	1.4	2.4	1.4
H31.723 Machinists and Related Occupations	264	0.8	1.4	6.7	1.1
H32.726 Metal Forming, Shaping and Erecting Trades	1,018	1.5	3.6	1.4	2.6
H41.731 Machinery & Transportation Equipment Mechanics (Except Motor Vehicle)	986	1.5	2.9	0.7	2.3
H42.732 Automotive service technicians	1,561	0.9	0.9	4.6	0.9
H43.733 Other Mechanics	239	1.1	1.4	4.0	1.3
H51.734 Upholsterers, Tailors, Shoe Repairers, Jewellers & Related Occupations	330	0.9	1.0	6.0	1.0
H52.738 Printing Press Operators, Commercial Divers & Other Trades & Related Occupations n.e.c.	227	0.9	1.5	5.1	1.2
H53.744 Other installers repairers and servicers	657	1.5	3.0	0.6	2.3
H61.742 Heavy Equipment Operators	798	2.2	5.5	-3.9	4.0
H62.737 Crane Operators Drillers and Blasters	141	2.3	5.9	-4.0	4.2
H71.741 Motor Vehicle and Transit Drivers	2,899	1.9	2.2	1.9	2.1
H72.736 Train Crew Operating Occupations	16	2.2	2.7	1.1	2.5
H73.743 Other Transport Equipment Operators and Related Workers	460	1.9	2.2	1.6	2.1
H81.745 Longshore Workers and Material Handlers	1,158	1.3	1.5	3.2	1.4
H82.761 Trades Helpers and Labourers	1,250	2.4	6.4	-4.5	4.5

Camosun College Region

Projected Annual Growth Rates in Occupational Demand

	Estimated Employment	Average Annual % Change			Avg Annual % Chg Over 4 Years
	<u>2005</u>	<u>2007/2005</u>	<u>2009/2007</u>	<u>2010/2009</u>	<u>2009/2005</u>
H83.762 Public Works and Other Labourers n.e.c.	216	1.1	1.8	-0.1	1.5
I01.825 Contractors, Operators & Supervisors in Agriculture, Horticulture & Aquaculture	762	0.9	0.6	3.5	0.8
I02.843 Agriculture and Horticulture Workers	558	0.9	0.5	4.1	0.7
I11.821 Supervisors, Logging and Forestry	46	1.3	0.5	0.6	0.9
I12.822 Supervisors, Mining Oil and Gas	21	3.0	2.6	-1.4	2.9
I13.823 Underground Miners, Oil and Gas Drillers and Related Workers	21	3.0	1.8	-0.9	2.4
I14.841 Mine Service Workers and Operators in Oil and Gas Drilling	25	3.7	3.1	-2.1	3.5
I15.824 Logging Machinery Operators	55	1.8	1.0	-1.1	1.4
I16.842 Logging and Forestry Workers	143	1.3	0.4	-0.1	0.9
I17.826 Fishing Vessel Masters and Skippers and Fishermen/women	96	1.6	1.4	6.9	1.5
I18.844 Other Fishing and Trapping Occupations	26	1.4	1.4	6.6	1.4
I21.861 Primary Production Labourers	736	1.1	1.1	1.4	1.1
J01.921 Supervisors, Processing Occupations	164	2.2	1.5	2.5	1.9
J02.922 Supervisors, Assembly and Fabrication	126	0.9	1.7	6.5	1.3
J11.923 Central Control & Process Operators in Manufacturing & Processing	53	5.3	2.1	-0.6	3.8
J12.941 Machine Operators & Related Workers in Metal & Mineral Products Processing	150	1.1	2.3	4.6	1.7
J13.942 Machine Operators & Related Workers in Chemical, Plastic & Rubber Processing	71	0.9	0.9	2.4	0.9
J14.943 Machine Operators & Related Workers in Pulp & Paper Production & Wood Processing	123	0.9	1.4	3.5	1.2
J15.944 Machine Operators and Related Workers in Textile Processing	40	0.9	1.1	6.6	1.0
J16.945 Machine Operators and Related Workers in Fabric, Fur & Leather Products Manufacturing	316	0.8	1.3	7.6	1.1
J17.946 Machine Operators & Related Workers in Food, Beverage & Tobacco Processing	313	3.3	1.4	1.3	2.4
J18.947 Printing Machine Operators and Related Occupations	332	0.9	1.0	5.7	1.0
J19.951 Machining, Metalworking, Woodworking & Related Machine Operators	175	0.8	1.6	6.4	1.2
J21.948 Mechanical Electrical and Electronics Assemblers	339	0.8	1.4	6.7	1.1

Camosun College Region

Projected Annual Growth Rates in Occupational Demand

	Estimated Employment	Average Annual % Change			Avg Annual % Chg Over 4 Years
	<u>2005</u>	<u>2007/2005</u>	<u>2009/2007</u>	<u>2010/2009</u>	<u>2009/2005</u>
J22.949 Other Assembly and Related Occupations	608	1.0	1.9	5.3	1.4
J31.961 Labourers in Processing Manufacturing and Utilities	1,018	1.8	1.4	3.7	1.6

Appendix 5

Projected Annual Growth Rates in Occupational Demand (4-digit)

Camosun College Region

Projected Annual Growth Rates in Occupational Demand

	Estimated Employment	Average Annual % Change			Avg Annual % Chg Over 4 Years
	<u>2005</u>	<u>2007/2005</u>	<u>2009/2007</u>	<u>2010/2009</u>	<u>2009/2005</u>
All occupations	167,460	1.3	1.6	2.7	1.4
A Management occupations	18,835	1.1	1.4	2.9	1.3
A0 Senior management occupations	2,393	1.1	1.3	2.5	1.2
A01.001 Legislators and Senior Management	2,393	1.1	1.3	2.5	1.2
A011.0011 Legislators	147	0.5	0.6	0.6	0.6
A012.0012 Senior Government Managers and Officials	423	0.5	0.6	0.7	0.6
A013.0013 Senior Managers - Financial, Communications and Other Business Services	788	1.1	0.5	4.2	0.8
A014.0014 Senior Managers - Health, Education, Social and Community Services and Membership Organizations	263	1.6	1.7	3.4	1.7
A015.0015 Senior Managers - Trade, Broadcasting and Other Services n.e.c.	392	0.7	0.8	4.1	0.7
A016.0016 Senior Managers - Goods Production, Utilities, Transportation and Construction	379	2.0	4.0	-0.2	3.1
A1 Specialist managers	4,002	1.0	1.1	3.2	1.1
A11.011 Administrative Services Managers	1,466	1.0	1.0	2.9	1.0
A111.0111 Financial Managers	720	1.0	0.8	3.0	0.9
A112.0112 Human Resources Managers	276	1.1	1.0	2.9	1.1
A113.0113 Purchasing Managers	60	1.0	1.3	3.6	1.1
A114.0114 Other Administrative Services Managers	408	1.1	1.2	2.5	1.2
A12.021 Managers in Engineering, Architecture, Science and Information Systems	759	1.1	1.0	3.5	1.1
A121.0211 Engineering Managers	192	1.2	1.4	3.5	1.3
A122.0213 Computer and Information Systems Managers	482	1.1	0.9	3.5	1.0
A123.0212 Architecture and Science Managers	81	1.2	1.1	3.6	1.2
A13.061 Sales, Marketing and Advertising Managers	1,284	0.9	1.1	3.8	1.0
A131.0611 Sales, Marketing and Advertising Managers	1,284	0.9	1.1	3.8	1.0
A14.072 Facility Operation and Maintenance Managers	490	1.1	1.4	2.5	1.3
A141.0721 Facility Operation and Maintenance Managers	492	1.1	1.4	2.5	1.3

Camosun College Region

Projected Annual Growth Rates in Occupational Demand

	Estimated Employment	Average Annual % Change			Avg Annual % Chg Over 4 Years
	<u>2005</u>	<u>2007/2005</u>	<u>2009/2007</u>	<u>2010/2009</u>	<u>2009/2005</u>
A2 Managers in retail trade, food and accommodation services	6,538	0.9	0.8	4.8	0.8
A21.062 Managers in Retail Trade	4,170	1.1	0.5	5.0	0.8
A211.0621 Retail Trade Managers	4,168	1.1	0.5	5.0	0.8
A22.063 Managers in Food Service and Accommodation	2,372	0.5	1.2	4.5	0.9
A221.0631 Restaurant and Food Service Managers	1,765	0.5	1.2	4.6	0.9
A222.0632 Accommodation Service Managers	606	0.5	1.2	4.5	0.9
A3 Other managers n.e.c.	5,900	1.4	2.4	0.7	1.9
A30.012 Managers in Financial and Business Services	1,369	0.8	-0.1	3.8	0.4
A301.0121 Insurance, Real Estate and Financial Brokerage Managers	343	0.8	0.1	3.3	0.5
A302.0122 Banking, Credit and Other Investment Managers	908	0.7	-0.3	4.0	0.2
A303.0123 Other Business Services Managers	118	1.2	1.1	3.8	1.2
A31.013 Managers in Communication (Except Broadcasting)	127	1.3	1.4	1.6	1.4
A311.0131 Telecommunication Carriers Managers	114	1.2	1.3	1.6	1.3
A312.0132 Postal and Courier Services Managers	14	1.8	2.1	1.9	2.0
A32.031 Managers in Health, Education, Social and Community Services	1,101	1.3	1.6	1.8	1.5
A321.0311 Managers in Health Care	313	2.3	2.4	3.5	2.4
A322.0312 Administrators - Post-Secondary Education and Vocational Training	217	0.7	1.2	0.6	1.0
A323.0313 School Principals and Administrators of Elementary and Secondary Education	380	0.7	1.2	0.5	0.9
A324.0314 Managers in Social, Community and Correctional Services	190	1.6	1.6	2.9	1.6
A33.041 Managers in Public Administration	247	0.7	0.7	1.1	0.7
A331.0411 Government Managers - Health and Social Policy Development and Program Administration	90	0.8	0.9	1.3	0.9
A332.0412 Government Managers - Economic Analysis, Policy Development and Program Administration	85	0.6	0.6	1.0	0.6
A333.0413 Government Managers - Education Policy Development and Program Administration	15	0.6	0.6	1.7	0.6
A334.0414 Other Managers in Public Administration	59	0.5	0.6	0.6	0.6
A34.051 Managers in Art, Culture, Recreation and Sport	236	1.1	1.2	1.6	1.1

Camosun College Region

Projected Annual Growth Rates in Occupational Demand

	Estimated Employment	Average Annual % Change			Avg Annual % Chg Over 4 Years
	<u>2005</u>	<u>2007/2005</u>	<u>2009/2007</u>	<u>2010/2009</u>	<u>2009/2005</u>
A341.0511 Library, Archive, Museum and Art Gallery Managers	37	1.1	1.3	1.3	1.2
A342.0512 Managers - Publishing, Motion Pictures, Broadcasting and Performing Arts	83	1.3	1.3	1.9	1.3
A343.0513 Recreation and Sports Program and Service Directors	115	1.0	1.1	1.5	1.0
A35.064 Managers in Protective Service	344	0.5	0.6	0.6	0.5
A351.0641 Commissioned Police Officers	60	0.5	0.6	0.6	0.5
A352.0642 Fire Chiefs and Senior Fire-fighting Officers	53	0.5	0.6	0.6	0.5
A353.0643 Commissioned Officers, Armed Forces	230	0.5	0.6	0.6	0.5
A36.065 Managers in Other Services	242	1.0	1.3	3.3	1.2
A361.0651 Other Services Managers	241	1.0	1.3	3.3	1.1
A37.071 Managers in Construction and Transportation	1,609	2.5	6.2	-4.3	4.5
A371.0711 Construction Managers	965	2.5	6.8	-5.1	4.8
A372.0712 Residential Home Builders and Renovators	405	2.6	7.2	-5.7	5.1
A373.0713 Transportation Managers	241	2.0	2.2	1.9	2.2
A38.081 Managers in Primary Production (Except Agriculture)	78	1.6	1.1	0.8	1.3
A381.0811 Primary Production Managers (Except Agriculture)	80	1.5	1.1	1.0	1.3
A39.091 Managers in Manufacturing and Utilities	547	1.2	1.4	5.5	1.3
A391.0911 Manufacturing Managers	479	1.2	1.5	6.1	1.4
A392.0912 Utilities Managers	68	1.0	0.7	0.6	0.9
B Business, finance and administrative occupations	33,417	1.1	1.0	2.9	1.1
B0 Professional occupations in business and finance	5,835	1.0	0.6	3.6	0.8
B01.111 Auditors, Accountants and Investment Professionals	4,717	1.0	0.5	3.7	0.8
B011.1111 Financial Auditors and Accountants	2,801	1.2	1.0	3.6	1.1
B012.1112 Financial and Investment Analysts	389	0.9	0.2	3.4	0.5
B013.1113 Securities Agents, Investment Dealers and Brokers	501	0.7	-0.3	4.0	0.2
B014.1114 Other Financial Officers	1,028	0.8	-0.1	3.9	0.3
B02.112 Human Resources and Business Service Professionals	1,120	1.1	0.9	3.6	1.0
B021.1121 Specialists in Human Resources	436	1.0	0.9	2.7	0.9
B022.1122 Professional Occupations in Business Services to Management	681	1.2	0.9	4.1	1.1

Camosun College Region

Projected Annual Growth Rates in Occupational Demand

	Estimated Employment	Average Annual % Change			Avg Annual % Chg Over 4 Years
	<u>2005</u>	<u>2007/2005</u>	<u>2009/2007</u>	<u>2010/2009</u>	<u>2009/2005</u>
B1 Finance and insurance administration occupations	2,992	1.1	1.1	3.2	1.1
B11.123 Finance and Insurance Administrative Occupations	2,990	1.2	1.1	3.2	1.1
B111.1231 Bookkeepers	1,882	1.4	1.7	3.0	1.6
B112.1232 Loan Officers	325	0.7	-0.2	3.9	0.3
B113.1233 Insurance Adjusters and Claims Examiners	488	0.7	-0.3	3.9	0.2
B114.1234 Insurance Underwriters	123	0.7	-0.3	4.0	0.2
B115.1235 Assessors, Valuers and Appraisers	131	0.6	0.5	1.3	0.6
B116.1236 Customs, Ship and Other Brokers	46	1.4	1.6	2.6	1.5
B2 Secretaries	4,267	1.4	1.6	2.6	1.5
B21.124 Secretaries, Records and Transcriptionists	4,267	1.3	1.6	2.6	1.5
B211.1241 Secretaries (Except Legal and Medical)	2,660	1.2	1.6	1.8	1.4
B212.1242 Legal Secretaries	990	1.2	0.8	4.2	1.0
B213.1243 Medical Secretaries	543	2.4	2.5	3.5	2.5
B214.1244 Court Records and Medical Transcriptionists	72	2.1	2.1	3.2	2.1
B3 Administrative and regulatory occupations	3,621	1.1	1.3	2.3	1.3
B31.122 Administrative and Regulatory Occupations	3,618	1.1	1.3	2.3	1.2
B311.1221 Administrative Officers	2,177	1.3	1.5	2.6	1.4
B312.1222 Executive Assistants	309	1.0	1.1	2.4	1.1
B313.1223 Personnel and Recruitment Officers	135	1.1	1.1	2.2	1.1
B314.1224 Property Administrators	141	1.2	2.0	1.0	1.6
B315.1225 Purchasing Agents and Officers	222	1.0	1.4	3.0	1.3
B316.1226 Conference and Event Planners	135	1.0	1.0	2.8	1.0
B317.1227 Court Officers and Justices of the Peace	74	0.5	0.6	0.6	0.5
B318.1228 Immigration, Employment Insurance and Revenue Officers	426	0.5	0.6	0.6	0.5
B4 Clerical supervisors	705	1.0	0.8	2.6	0.9
B41.121 Clerical Supervisors	706	1.0	0.8	2.7	0.9
B411.1211 Supervisors, General Office & Administrative Support Clerks	206	1.0	1.0	2.1	1.0
B412.1212 Supervisors, Finance and Insurance Clerks	230	0.8	0.3	3.3	0.6
B413.1213 Supervisors, Library Correspondence and Related Information	123	0.7	0.6	1.8	0.7
B414.1214 Supervisors, Mail and Message Distribution Occupations	42	1.7	2.0	1.7	1.9

Camosun College Region

Projected Annual Growth Rates in Occupational Demand

	Estimated Employment	Average Annual % Change			Avg Annual % Chg Over 4 Years
	<u>2005</u>	<u>2007/2005</u>	<u>2009/2007</u>	<u>2010/2009</u>	<u>2009/2005</u>
B415.1215 Supervisors, Recording, Distributing and Scheduling Occupations	103	1.2	1.2	3.6	1.2
B5 Clerical occupations	15,994	1.1	1.0	2.8	1.1
B51.141 Clerical Occupations, General Office Skills	5,569	1.3	1.3	2.6	1.3
B511.1411 General Office Clerks	3,507	1.1	1.2	2.3	1.2
B513.1413 Records Management and Filing Clerks	288	1.4	1.3	2.6	1.4
B514.1414 Receptionists and Switchboard Operators	1,775	1.6	1.6	3.3	1.6
B52.142 Office Equipment Operators	669	1.0	0.9	2.5	0.9
B522.1422 Data Entry Clerks	537	0.9	0.9	2.5	0.9
B523.1423 Desktop Publishing Operators and Related Occupations	56	1.0	1.1	3.5	1.1
B524.1424 Telephone Operators	75	1.1	1.1	1.7	1.1
B53.143 Finance and Insurance Clerks	4,038	0.9	0.5	3.3	0.7
B531.1431 Accounting and Related Clerks	1,584	1.1	1.2	2.8	1.2
B532.1432 Payroll Clerks	360	1.2	1.4	2.3	1.3
B533.1433 Customer Service Representatives - Financial Services	1,482	0.7	-0.3	4.0	0.2
B534.1434 Banking, Insurance and Other Financial Clerks	465	0.7	-0.2	3.9	0.3
B535.1435 Collectors	149	0.9	0.4	2.5	0.7
B54.144 Administrative Support Clerks	1,207	1.1	1.2	2.2	1.2
B541.1441 Administrative Clerks	966	1.2	1.2	2.4	1.2
B542.1442 Personnel Clerks	138	1.2	1.2	2.2	1.2
B543.1443 Court Clerks	103	0.5	0.6	0.7	0.6
B55.145 Library, Correspondence and Related Information Clerks	2,116	0.9	0.7	2.3	0.8
B551.1451 Library Clerks	111	1.1	1.2	1.0	1.2
B552.1452 Correspondence, Publication and Related Clerks	49	1.1	1.0	2.3	1.0
B553.1453 Customer Service, Information and Related Clerks	1,355	1.0	0.7	3.0	0.9
B554.1454 Survey Interviewers and Statistical Clerks	601	0.6	0.6	1.1	0.6
B56.146 Mail and Message Distribution Occupations	846	1.5	1.6	2.4	1.6
B561.1461 Mail, Postal and Related Clerks	334	1.5	1.6	2.0	1.6
B562.1462 Letter Carriers	254	1.9	2.2	1.7	2.1
B563.1463 Couriers, Messengers and Door-to-Door Distributors	257	1.2	0.9	3.7	1.1

Camosun College Region

Projected Annual Growth Rates in Occupational Demand

	Estimated Employment	Average Annual % Change			Avg Annual % Chg Over 4 Years
	<u>2005</u>	<u>2007/2005</u>	<u>2009/2007</u>	<u>2010/2009</u>	<u>2009/2005</u>
B57.147 Recording, Scheduling and Distributing Occupations	1,555	1.2	1.2	3.4	1.2
B571.1471 Shippers and Receivers	680	1.1	1.1	4.1	1.1
B572.1472 Storekeepers and Parts Clerks	220	1.0	0.7	4.4	0.9
B573.1473 Production Clerks	77	1.5	1.5	3.6	1.5
B574.1474 Purchasing and Inventory Clerks	248	1.2	1.1	3.7	1.2
B575.1475 Dispatchers and Radio Operators	306	1.2	1.6	1.0	1.4
B576.1476 Transportation Route and Crew	23	1.6	1.7	2.5	1.7
C Natural and applied sciences and related occupations	13,031	1.2	1.2	3.1	1.2
C0 Professional occupations in natural and applied sciences	7,543	1.2	1.0	3.6	1.1
C01.211 Physical Science Professionals	346	1.2	0.9	3.2	1.1
C011.2111 Physicists and Astronomers	38	1.1	1.0	3.8	1.1
C012.2112 Chemists	139	1.3	1.0	3.5	1.2
C013.2113 Geologists, Geochemists and Geophysicists	130	1.3	0.9	2.9	1.1
C014.2114 Meteorologists	22	0.9	0.7	2.8	0.8
C015.2115 Other Professional Occupations in Physical Sciences	19	0.9	0.8	2.8	0.9
C02.212 Life Science Professionals	657	1.0	0.8	2.6	0.9
C021.2121 Biologists and Related Scientists	340	1.0	0.9	2.8	1.0
C022.2122 Forestry Professionals	264	1.0	0.7	2.5	0.9
C023.2123 Agricultural Representatives, Consultants and Specialists	51	0.9	0.8	2.4	0.8
C03.213 Civil, Mechanical, Electrical and Chemical Engineers	1,364	1.3	1.3	3.4	1.3
C031.2131 Civil Engineers	716	1.3	1.5	2.6	1.4
C032.2132 Mechanical Engineers	286	1.3	1.2	4.1	1.3
C033.2133 Electrical and Electronics Engineers	297	1.1	1.1	4.4	1.1
C034.2134 Chemical Engineers	64	1.7	1.0	3.9	1.4
C04.214 Other Engineers	701	1.3	1.1	3.9	1.2
C041.2141 Industrial and Manufacturing Engineers	56	1.1	1.6	4.8	1.4
C042.2142 Metallurgical and Materials Engineers	15	1.3	0.8	4.0	1.0
C043.2143 Mining Engineers	68	1.4	1.4	3.5	1.4
C044.2144 Geological Engineers	72	1.3	1.0	3.9	1.2
C045.2145 Petroleum Engineers	14	5.1	1.3	1.0	3.3

Camosun College Region

Projected Annual Growth Rates in Occupational Demand

	Estimated Employment	Average Annual % Change			Avg Annual % Chg Over 4 Years
	<u>2005</u>	<u>2007/2005</u>	<u>2009/2007</u>	<u>2010/2009</u>	<u>2009/2005</u>
C046.2146 Aerospace Engineers	15	1.1	1.2	4.0	1.2
C047.2147 Computer Engineers (Except Software Engineers)	302	1.1	1.0	4.2	1.1
C048.2148 Other Professional Engineers n.e.c.	168	1.3	1.2	3.4	1.3
C05.215 Architects, Urban Planners and Land Surveyors	713	1.2	1.2	3.1	1.2
C051.2151 Architects	363	1.3	1.1	4.1	1.2
C052.2152 Landscape Architects	34	1.2	1.0	3.7	1.1
C053.2153 Urban and Land Use Planners	148	1.0	1.7	0.3	1.3
C054.2154 Land Surveyors	164	1.2	1.2	3.3	1.2
C06.216 Mathematicians, Statisticians and Actuaries	53	1.2	1.0	3.2	1.1
C061.2161 Mathematicians, Statisticians and Actuaries	55	1.2	0.9	3.4	1.0
C07.217 Computer and Information Systems Professionals	3,709	1.2	0.9	3.9	1.0
C071.2171 Information Systems Analysts and Consultants	1,190	1.1	0.8	3.6	1.0
C072.2172 Database Analysts and Data Administrators	175	1.1	0.9	3.0	1.0
C073.2173 Software Engineers	495	1.2	0.9	4.2	1.1
C074.2174 Computer Programmers and Interactive Media Developers	1,326	1.2	0.8	4.0	1.0
C075.2175 Web Designers and Developers	523	1.2	0.9	4.1	1.0
C1 Technical occupations related to natural and applied sciences	5,489	1.2	1.4	2.5	1.3
C11.221 Technical Occupations in Physical Sciences	194	1.3	1.0	2.8	1.2
C111.2211 Chemical Technologists and Technicians	117	1.2	0.9	3.0	1.1
C112.2212 Geological and Mineral Technologists and Technicians	62	1.5	1.2	2.6	1.4
C113.2213 Meteorological Technicians	18	1.1	1.0	2.2	1.1
C12.222 Technical Occupations in Life Sciences	780	0.9	0.7	1.9	0.8
C121.2221 Biological Technologists and Technicians	180	1.0	0.8	3.1	0.9
C122.2222 Agricultural and Fish Products Inspectors	64	0.7	0.7	1.1	0.7
C123.2223 Forestry Technologists and Technicians	300	0.9	0.6	1.9	0.8
C124.2224 Conservation and Fishery Officers	146	0.5	0.6	0.7	0.6
C125.2225 Landscape and Horticultural Technicians and Specialists	90	1.0	1.3	1.7	1.2
C13.223 Technical Occupations in Civil, Mechanical and Industrial Engineering	533	1.6	3.2	0.3	2.5
C131.2231 Civil Engineering Technologists and Technicians	167	1.2	1.6	2.0	1.4

Camosun College Region

Projected Annual Growth Rates in Occupational Demand

	Estimated Employment	Average Annual % Change			Avg Annual % Chg Over 4 Years
	<u>2005</u>	<u>2007/2005</u>	<u>2009/2007</u>	<u>2010/2009</u>	<u>2009/2005</u>
C132.2232 Mechanical Engineering Technologists and Technicians	107	1.4	1.8	3.5	1.6
C133.2233 Industrial Engineering and Manufacturing Technologists and Technicians	63	1.2	1.5	4.7	1.4
C134.2234 Construction Estimators	197	2.3	5.9	-3.8	4.3
C14.224 Technical Occupations in Electronics & Electrical Engineering	926	1.1	1.4	3.1	1.3
C141.2241 Electrical and Electronics Engineering Technologists and Technicians	327	1.0	1.1	4.0	1.1
C142.2242 Electronic Service Technicians (Household and Business Equipment)	485	1.1	1.5	2.9	1.3
C143.2243 Industrial Instrument Technicians and Mechanics	44	2.0	1.9	1.9	2.0
C144.2244 Aircraft Instrument Electrical and Avionics Mechanics, Technicians and Inspectors	72	1.2	1.5	1.9	1.4
C15.225 Technical Occupations in Architecture, Drafting, Surveying and Mapping	893	1.2	1.1	3.6	1.2
C151.2251 Architectural Technologists and Technicians	105	1.3	1.2	3.7	1.2
C152.2252 Industrial Designers	72	1.2	1.3	4.5	1.3
C153.2253 Drafting Technologists and Technicians	468	1.3	1.3	3.8	1.3
C154.2254 Land Survey Technologists and Technicians	51	1.3	1.3	2.9	1.3
C155.2255 Mapping and Related Technologists and Technicians	202	0.9	0.8	2.8	0.9
C16.226 Other Technical Inspectors and Regulatory Officers	433	1.1	1.4	1.7	1.3
C161.2261 Nondestructive Testers and Inspectors	32	1.2	1.0	4.5	1.1
C162.2262 Engineering Inspectors and Regulatory Officers	64	1.0	0.9	2.4	1.0
C163.2263 Inspectors in Public and Environmental Health and Occupational Health and Safety	166	1.2	1.4	1.8	1.3
C164.2264 Construction Inspectors	171	1.1	1.6	0.8	1.4
C17.227 Transportation Officers and Controllers	565	1.9	2.1	1.7	2.0
C171.2271 Air Pilots, Flight Engineers and Flying Instructors	192	1.7	2.0	1.7	1.9
C172.2272 Air Traffic Control and Related Occupations	63	1.6	1.9	1.6	1.8
C173.2273 Deck Officers, Water Transport	184	2.0	2.2	1.7	2.2
C174.2274 Engineer Officers, Water Transport	95	2.1	2.3	1.9	2.2

Camosun College Region

Projected Annual Growth Rates in Occupational Demand

	Estimated Employment	Average Annual % Change			Avg Annual % Chg Over 4 Years
	<u>2005</u>	<u>2007/2005</u>	<u>2009/2007</u>	<u>2010/2009</u>	<u>2009/2005</u>
C175.2275 Railway Traffic Controllers and Marine Traffic Regulators	28	1.4	1.5	1.3	1.5
C18.228 Technical Occupations in Computer and Information Systems	1,160	1.1	0.8	3.3	1.0
C181.2281 Computer and Network Operators and Web Technicians	606	1.1	0.9	3.3	1.0
C182.2282 User Support Technicians	453	1.1	0.8	3.3	1.0
C183.2283 Systems Testing Technicians	98	1.2	0.9	3.9	1.0
D Health occupations	11,658	2.4	2.3	3.7	2.4
D0 Professional occupations in health	2,700	2.3	2.2	3.7	2.3
D01.311 Physicians Dentists and Veterinarians	1,435	2.4	2.4	3.6	2.5
D011.3111 Specialist Physicians	312	2.5	2.5	3.5	2.6
D012.3112 General Practitioners and Family Physicians	660	2.5	2.6	3.6	2.6
D013.3113 Dentists	330	2.5	2.6	3.6	2.6
D014.3114 Veterinarians	132	1.2	0.8	4.4	1.1
D02.312 Optometrists, Chiropractors and Other Health Diagnosing and Treating Professionals	183	2.5	2.5	3.6	2.5
D021.3121 Optometrists	47	2.4	2.4	3.7	2.5
D022.3122 Chiropractors	93	2.5	2.6	3.6	2.6
D023.3123 Other Professional Occupations in Health Diagnosing and Treating	43	2.4	2.4	3.7	2.4
D03.313 Pharmacists, Dietitians and Nutritionists	438	1.7	1.3	4.5	1.5
D031.3131 Pharmacists	320	1.4	0.9	4.9	1.2
D032.3132 Dietitians and Nutritionists	116	2.3	2.3	3.6	2.3
D04.314 Therapy and Assessment Professionals	643	2.4	2.5	3.4	2.5
D041.3141 Audiologists and Speech-Language Pathologists	96	2.1	2.2	2.8	2.2
D042.3142 Physiotherapists	286	2.5	2.6	3.6	2.6
D043.3143 Occupational Therapists	155	2.5	2.5	3.5	2.6
D044.3144 Other Professional Occupations in Therapy and Assessment	107	2.3	2.3	3.4	2.4
D1 Nurse supervisors and registered nurses	3,145	2.5	2.5	3.5	2.6
D11.315 Nurse Supervisors and Registered Nurses	3,146	2.5	2.5	3.6	2.6
D111.3151 Head Nurses and Supervisors	107	2.4	2.4	3.5	2.5
D112.3152 Registered Nurses	3,036	2.5	2.5	3.6	2.6

Camosun College Region

Projected Annual Growth Rates in Occupational Demand

	Estimated Employment	Average Annual % Change			Avg Annual % Chg Over 4 Years
	<u>2005</u>	<u>2007/2005</u>	<u>2009/2007</u>	<u>2010/2009</u>	<u>2009/2005</u>
D2 Technical and related occupations in health	2,865	2.2	2.2	3.7	2.3
D21.321 Medical Technologists and Technicians (Except Dental Health)	1,169	2.2	2.2	3.8	2.2
D211.3211 Medical Laboratory Technologists and Pathologists' Assistants	348	2.3	2.4	3.6	2.4
D212.3212 Medical Laboratory Technicians	267	2.4	2.4	3.6	2.4
D213.3213 Veterinary and Animal Health Technologists and Technicians	176	1.3	0.9	4.5	1.1
D214.3214 Respiratory Therapists, Clinical Perfusionists and Cardio- Pulmonary Technologists	78	2.4	2.5	3.6	2.5
D215.3215 Medical Radiation Technologists	186	2.5	2.5	3.6	2.5
D216.3216 Medical Sonographers	44	2.5	2.6	3.6	2.6
D217.3217 Cardiology Technologists	26	2.5	2.5	3.5	2.5
D218.3218 Electroencephalographic and Other Diagnostic Technologists n.e.c.	16	2.3	2.4	3.3	2.4
D219.3219 Other Medical Technologists and Technicians (Except Dental Health)	31	1.9	2.0	5.1	2.0
D22.322 Technical Occupations in Dental Health Care	333	2.2	2.3	4.4	2.3
D221.3221 Denturists	25	2.0	2.2	4.7	2.1
D222.3222 Dental Hygienists and Dental Therapists	208	2.5	2.5	3.6	2.6
D223.3223 Dental Technologists, Technicians and Laboratory Bench Workers	98	1.5	1.9	6.1	1.7
D23.323 Other Technical Occupations in Health Care (Except Dental)	1,362	2.3	2.3	3.6	2.3
D231.3231 Opticians	114	1.4	0.8	5.0	1.1
D232.3232 Midwives and Practitioners of Natural Healing	117	2.3	2.3	3.8	2.4
D233.3233 Licensed Practical Nurses	639	2.5	2.5	3.6	2.6
D234.3234 Ambulance Attendants and Other Paramedical Occupations	269	2.2	2.4	2.7	2.3
D235.3235 Other Technical Occupations in Therapy and Assessment	224	2.1	2.1	3.9	2.1
D3 Assisting occupations in support of health services	2,945	2.4	2.4	3.7	2.4
D31.341 Assisting Occupations in Support of Health Services	2,947	2.4	2.4	3.7	2.4
D311.3411 Dental Assistants	510	2.5	2.5	3.6	2.6
D312.3413 Nurse Aides, Orderlies and Patient Service Associates	1,839	2.5	2.5	3.6	2.6

Camosun College Region

Projected Annual Growth Rates in Occupational Demand

	Estimated Employment	Average Annual % Change			Avg Annual % Chg Over 4 Years
	<u>2005</u>	<u>2007/2005</u>	<u>2009/2007</u>	<u>2010/2009</u>	<u>2009/2005</u>
D313.3414 Other Assisting Occupations in Support of Health Services	594	2.0	1.8	4.2	1.9
E Occupations in social science, education, government service & religion	17,393	1.2	1.4	2.0	1.3
E0 Judges, lawyers, psychologists, social workers, ministers of religion and policy and program officers	5,176	1.3	1.2	3.2	1.3
E01.411 Judges, Lawyers and Quebec Notaries	1,385	1.2	0.8	4.0	1.0
E011.4111 Judges	43	0.5	0.6	0.6	0.5
E012.4112 Lawyers and Quebec Notaries	1,341	1.2	0.8	4.2	1.0
E02.415 Psychologists, Social Workers, Counsellors, Clergy and Probation Officers	1,873	1.6	1.7	3.0	1.7
E021.4151 Psychologists	207	1.9	2.0	2.7	2.0
E022.4152 Social Workers	666	1.6	1.7	2.4	1.7
E023.4153 Family, Marriage and Other Related Counsellors	531	2.1	2.2	3.4	2.2
E024.4154 Ministers of Religion	332	0.9	1.0	4.7	0.9
E025.4155 Probation and Parole Officers and Related Occupations	138	0.6	0.7	0.8	0.7
E03 Policy and program officers, researchers and consultants	1,924	1.1	1.0	2.7	1.1
E031.4161 Natural and Applied Science Policy Researchers, Consultants and Program Officers	243	1.1	0.8	3.3	1.0
E032.4162 Economists and Economic Policy Researchers and Analysts	93	0.8	0.7	2.3	0.7
E033.4163 Business Development Officers and Marketing Researchers and Consultants	472	1.2	0.8	3.9	1.0
E034.4164 Social Policy Researchers, Consultants & Program Officers	344	1.0	0.9	2.3	1.0
E035.4166 Education Policy Researchers Consultants & Program Officers	166	0.8	1.1	1.2	0.9
E036.4167 Recreation, Sports and Fitness Program Supervisors and Consultants	196	1.4	1.5	2.3	1.4
E037.4168 Program Officers Unique to Government	126	0.5	0.6	0.6	0.5
E038.4169 Other Professional Occupations in Social Science	60	1.1	0.9	3.1	1.0
E039.4165 Health Policy Researchers, Consultants & Program Officers	218	1.5	1.5	3.2	1.5
E1 Teachers and professors	7,439	0.7	1.2	0.6	0.9
E11.412 University Professors and Assistants	997	0.7	1.2	0.6	0.9

Camosun College Region

Projected Annual Growth Rates in Occupational Demand

	Estimated Employment	Average Annual % Change			Avg Annual % Chg Over 4 Years
	<u>2005</u>	<u>2007/2005</u>	<u>2009/2007</u>	<u>2010/2009</u>	<u>2009/2005</u>
E111.4121 University Professors	496	0.7	1.2	0.5	0.9
E112.4122 Post-Secondary Teaching and Research Assistants	500	0.7	1.1	0.7	1.0
E12.413 College and Other Vocational Instructors	1,190	0.7	1.1	0.8	0.9
E121.4131 College and Other Vocational Instructors	1,190	0.7	1.1	0.8	0.9
E13.414 Secondary and Elementary School Teachers and Educational Counsellors	5,254	0.7	1.2	0.5	0.9
E131.4141 Secondary School Teachers	2,078	0.7	1.2	0.5	0.9
E132.4142 Elementary School and Kindergarten Teachers	2,897	0.7	1.2	0.5	0.9
E133.4143 Educational Counsellors	279	0.7	1.2	0.6	1.0
E2 Paralegals, social services workers and occupations in education and religion n.e.c.	4,777	1.8	1.9	3.0	1.9
E21.421 Paralegals, Social Services Workers and Occupations in Education and Religion n.e.c.	4,777	1.8	1.9	3.0	1.9
E211.4211 Paralegal and Related Occupations	547	1.2	0.8	4.0	1.0
E212.4212 Community and Social Service Workers	1,412	1.9	1.9	2.9	1.9
E213.4213 Employment Counsellors	208	1.5	1.5	2.7	1.5
E214.4215 Instructors and Teachers of Persons with Disabilities	128	1.3	1.6	1.7	1.5
E215.4216 Other Instructors	505	0.8	1.1	0.9	1.0
E216.4217 Other Religious Occupations	71	0.9	1.0	4.5	1.0
E217.4214 Early Childhood Educators and Assistants	1,909	2.4	2.4	3.5	2.5
F Occupations in art, culture, recreation and sport	5,655	1.1	1.1	2.4	1.1
F0 Professional Occupations in Art and Culture	2,284	1.1	1.1	1.8	1.1
F01 Librarians, archivists, conservators and curators	162	1.1	1.2	1.3	1.1
F011.5111 Librarians	114	1.1	1.1	1.2	1.1
F012.5112 Conservators and Curators	31	1.0	1.2	1.2	1.1
F013.5113 Archivists	16	1.1	1.1	1.6	1.1
F02.512 Writing, Translating and Public Relations Professionals	988	1.1	1.0	2.7	1.1
F021.5121 Authors and Writers	289	1.2	1.1	2.4	1.2
F022.5122 Editors	115	1.2	1.1	1.9	1.2
F023.5123 Journalists	84	1.3	1.3	1.3	1.3

Camosun College Region

Projected Annual Growth Rates in Occupational Demand

	Estimated Employment	Average Annual % Change			Avg Annual % Chg Over 4 Years
	<u>2005</u>	<u>2007/2005</u>	<u>2009/2007</u>	<u>2010/2009</u>	<u>2009/2005</u>
F024.5124 Professional Occupations in Public Relations and Communications	351	1.0	0.9	3.0	1.0
F025.5125 Translators, Terminologists and Interpreters	149	1.2	1.0	3.7	1.1
F03.513 Creative and Performing Artists	1,137	1.0	1.2	1.1	1.1
F031.5131 Producers, Directors, Choreographers & Related Occupations	213	1.2	1.2	1.3	1.2
F032.5132 Conductors, Composers and Arrangers	29	1.1	1.1	1.8	1.1
F033.5133 Musicians and Singers	439	0.9	1.2	0.8	1.0
F034.5134 Dancers	103	0.8	1.2	0.7	1.0
F035.5135 Actors and Comedians	122	1.2	1.3	1.1	1.3
F036.5136 Painters, Sculptors and Other Visual Artists	231	1.2	1.2	1.5	1.2
F1 Technical occupations in art, culture, recreation and sport	3,367	1.1	1.1	2.8	1.1
F11.521 Technical Occupations in Libraries, Archives, Museums and Art Galleries	207	1.1	1.3	1.0	1.2
F111.5211 Library and Archive Technicians and Assistants	161	1.0	1.2	1.0	1.1
F112.5212 Technical Occupations Related to Museums and Art Galleries	48	1.2	1.6	0.9	1.4
F12.522 Photographers, Graphic Arts Technicians & Technical & coordinating Occupations in Motion Pictures, Broadcasting & Performing Arts	665	1.2	1.1	2.7	1.2
F121.5221 Photographers	235	1.2	0.9	4.3	1.1
F122.5222 Film and Video Camera Operators	48	1.3	1.2	1.4	1.3
F123.5223 Graphic Arts Technicians	60	1.1	1.2	3.7	1.2
F124.5224 Broadcast Technicians	24	1.4	1.5	1.5	1.5
F125.5225 Audio and Video Recording Technicians	74	1.2	1.2	1.9	1.2
F126.5226 Other Technical and Co-ordinating Occupations in Motion Pictures, Broadcasting and the Performing Arts	107	1.2	1.2	1.6	1.2
F127.5227 Support Occupations in Motion Pictures, Broadcasting and the Performing Arts	116	1.3	1.3	1.2	1.3
F13.523 Announcers and Other Performers	130	1.1	1.2	1.7	1.2
F131.5231 Announcers and Other Broadcasters	100	1.1	1.3	1.6	1.2
F132.5232 Other Performers	32	1.0	1.2	2.1	1.1
F14.524 Creative Designers and Craftspersons	1,367	1.2	1.0	4.4	1.1

Camosun College Region

Projected Annual Growth Rates in Occupational Demand

	Estimated Employment	Average Annual % Change			Avg Annual % Chg Over 4 Years
	<u>2005</u>	<u>2007/2005</u>	<u>2009/2007</u>	<u>2010/2009</u>	<u>2009/2005</u>
F141.5241 Graphic Designers and Illustrators	668	1.2	1.0	4.2	1.1
F142.5242 Interior Designers	226	1.3	1.2	3.8	1.3
F143.5243 Theatre, Fashion, Exhibit and Other Creative Designers	132	1.2	0.9	4.2	1.1
F144.5244 Artisans and Craftspersons	325	1.0	1.1	5.2	1.1
F145.5245 Patternmakers - Textile, Leather and Fur Products	17	0.9	1.0	6.7	1.0
F15.525 Athletes, Coaches, Referees and Related Occupations	998	1.0	1.1	1.4	1.1
F151.5251 Athletes	26	1.2	1.3	1.0	1.3
F152.5252 Coaches	116	0.9	1.2	0.9	1.0
F153.5253 Sports Officials and Referees	62	1.1	1.1	2.0	1.2
F154.5254 Program Leaders and Instructors in Recreation and Sport	791	1.0	1.1	1.4	1.0
G Sales and service occupations	41,103	1.0	1.0	4.0	1.0
G0 Sales and service supervisors	1,164	1.0	1.0	4.4	1.0
G01.621 Sales and Service Supervisors	1,167	1.0	1.0	4.4	1.0
G011.6211 Retail Trade Supervisors	524	1.1	0.5	5.0	0.8
G012.6212 Food Service Supervisors	427	0.8	1.3	4.3	1.1
G013.6213 Executive Housekeepers	53	0.9	1.5	4.3	1.2
G014.6214 Dry Cleaning and Laundry Supervisors	15	0.9	1.0	4.8	1.0
G015.6215 Cleaning Supervisors	51	1.1	1.5	2.5	1.3
G016.6216 Other Service Supervisors	96	1.0	1.4	2.5	1.2
G1 Wholesale, technical, insurance, real estate sales specialists and retail, wholesale and grain buyers	2,659	0.8	0.7	3.9	0.7
G11.641 Sales Representatives, Wholesale Trade	1,150	0.7	1.0	3.8	0.9
G111.6411 Sales Representatives - Wholesale Trade (Non-Technical)	1,150	0.7	1.0	3.8	0.9
G12.622 Technical Sales Specialists, Wholesale Trade	425	0.8	1.2	3.9	1.0
G121.6221 Technical Sales Specialists - Wholesale Trade	425	0.8	1.2	3.9	1.0
G13.623 Insurance and Real Estate Sales Occupations and Buyers	1,085	0.8	0.0	3.9	0.4
G131.6231 Insurance Agents and Brokers	839	0.7	-0.3	4.0	0.2
G132.6232 Real Estate Agents and Salespersons	38	1.5	3.2	-0.7	2.4
G133.6233 Retail and Wholesale Buyers	199	1.0	0.7	4.7	0.8
G134.6234 Grain Elevator Operators	-	-	-	-	-

Camosun College Region

Projected Annual Growth Rates in Occupational Demand

	Estimated Employment	Average Annual % Change			Avg Annual % Chg Over 4 Years
	<u>2005</u>	<u>2007/2005</u>	<u>2009/2007</u>	<u>2010/2009</u>	<u>2009/2005</u>
G2 Retail salespersons and sales clerks	6,728	1.1	0.5	5.0	0.8
G21.642 Retail Salespersons and Sales Clerks	6,726	1.1	0.5	5.0	0.8
G211.6421 Retail Salespersons and Sales Clerks	6,727	1.1	0.5	5.0	0.8
G3 Cashiers	3,080	1.0	0.5	4.9	0.8
G31.661 Cashiers	3,082	1.0	0.5	4.9	0.8
G311.6611 Cashiers	3,083	1.0	0.5	4.9	0.8
G4 Chefs and cooks	3,006	0.7	1.3	4.3	1.0
G41.624 Chefs and Cooks	3,007	0.7	1.3	4.3	1.0
G411.6241 Chefs	545	0.6	1.2	4.4	0.9
G412.6242 Cooks	2,464	0.7	1.3	4.3	1.0
G5 Occupations in food and beverage service	3,755	0.5	1.2	4.5	0.9
G51.645 Occupations in Food and Beverage Service	3,755	0.5	1.2	4.5	0.9
G511.6451 Maîtres d'hôtel and Hosts/Hostesses	341	0.6	1.2	4.5	0.9
G512.6452 Bartenders	504	0.5	1.2	4.5	0.9
G513.6453 Food and Beverage Servers	2,911	0.5	1.2	4.5	0.9
G6 Occupations in protective services	3,179	0.6	0.6	0.9	0.6
G61.626 Police Officers and Fire-fighters	1,659	0.5	0.6	0.6	0.5
G611.6261 Police Officers (Except Commissioned)	1,095	0.5	0.6	0.6	0.6
G612.6262 Fire-fighters	566	0.5	0.6	0.6	0.5
G62.646 Other Occupations in Protective Service	1,279	0.6	0.6	0.9	0.6
G621.6461 Sheriffs and Bailiffs	90	0.7	0.6	1.4	0.7
G622.6462 Correctional Service Officers	439	0.5	0.6	0.6	0.6
G623.6463 By-law Enforcement and Other Regulatory Officers n.e.c.	124	0.7	0.7	1.5	0.7
G624.6464 Other Ranks Armed Forces	530	0.5	0.6	0.6	0.5
G625.6465 Other Protective Service Occupations	95	1.0	0.8	3.2	0.9
G63.665 Security Guards and Related Occupations	239	1.1	1.2	2.6	1.1
G631.6651 Security Guards and Related Occupations	238	1.1	1.2	2.6	1.1
G7 Occupations in travel and accommodation including attendants in recreation and sport	1,436	1.2	1.6	2.5	1.4
G71.643 Occupations in Travel and Accommodation	892	1.3	1.8	2.9	1.6

Camosun College Region

Projected Annual Growth Rates in Occupational Demand

	Estimated Employment	Average Annual % Change			Avg Annual % Chg Over 4 Years
	<u>2005</u>	<u>2007/2005</u>	<u>2009/2007</u>	<u>2010/2009</u>	<u>2009/2005</u>
G711.6431 Travel Counsellors	33	1.5	1.6	2.6	1.6
G712.6432 Purser and Flight Attendants	244	1.8	2.2	1.7	2.0
G713.6433 Airline Sales and Service Agents	193	1.8	2.2	1.8	2.0
G714.6434 Ticket Agents, Cargo Service Representatives and Related Clerks (Except Airline)	65	2.1	2.3	2.0	2.3
G715.6435 Hotel Front Desk Clerks	360	0.5	1.2	4.6	0.8
G72.644 Tour and Recreational Guides and Casino Occupations	270	1.2	1.3	1.6	1.3
G721.6441 Tour and Travel Guides	62	1.2	1.5	1.8	1.4
G722.6442 Outdoor Sport and Recreational Guides	74	1.1	1.3	2.5	1.2
G723.6443 Casino Occupations	135	1.3	1.3	1.1	1.3
G73.667 Other Occupations in Travel, Accommodation, Amusement and Recreation	273	1.0	1.2	2.0	1.1
G731.6671 Operators and Attendants in Amusement, Recreation and Sport	179	1.0	1.1	1.3	1.0
G732.6672 Other Attendants in Accommodation and Travel	93	1.0	1.6	3.5	1.3
G8 Childcare and home support workers	3,970	1.6	1.8	2.8	1.7
G81.647 Childcare and Home Support Workers	3,967	1.6	1.8	2.8	1.7
G811.6471 Visiting Homemakers, Housekeepers & Related Occupations	1,548	2.3	2.3	3.5	2.3
G812.6472 Elementary and Secondary School Teacher Assistants	1,197	0.7	1.2	0.5	0.9
G814.6474 Babysitters, Nannies and Parents' Helpers	1,225	1.6	1.6	4.2	1.6
G9 Sales and service occupations n.e.c.	12,122	1.0	1.1	4.2	1.1
G91.627 Technical Occupations in Personal Service	874	0.8	0.9	4.9	0.9
G911.6271 Hairstylists and Barbers	840	0.8	0.9	4.9	0.9
G912.6272 Funeral Directors and Embalmers	35	0.8	0.9	4.9	0.8
G92.648 Other Occupations in Personal Service	490	0.9	0.8	4.7	0.8
G921.6481 Image, Social and Other Personal Consultants	34	1.0	0.7	4.7	0.9
G922.6482 Estheticians, Electrologists and Related Occupations	278	0.8	0.8	4.8	0.8
G923.6483 Pet Groomers and Animal Care Workers	154	0.9	0.8	4.5	0.9
G924.6484 Other Personal Service Occupations	24	0.9	0.8	4.3	0.9
G93.666 Cleaners	3,053	1.1	1.5	3.0	1.3

Camosun College Region

Projected Annual Growth Rates in Occupational Demand

	Estimated Employment	Average Annual % Change			Avg Annual % Chg Over 4 Years
	<u>2005</u>	<u>2007/2005</u>	<u>2009/2007</u>	<u>2010/2009</u>	<u>2009/2005</u>
G931.6661 Light Duty Cleaners	1,322	1.2	1.7	3.9	1.4
G932.6662 Specialized Cleaners	268	1.2	1.3	3.7	1.3
G933.6663 Janitors, Caretakers and Building Superintendents	1,459	1.0	1.4	2.1	1.2
G94.625 Butchers and Bakers	796	1.5	0.7	4.2	1.1
G941.6251 Butchers and Meat Cutters - Retail and Wholesale	293	1.1	0.4	5.2	0.7
G942.6252 Bakers	504	1.8	0.9	3.6	1.4
G96.664 Food Counter Attendants, Kitchen Helpers and Related Occupations	3,829	0.8	1.4	4.3	1.1
G961.6641 Food Counter Attendants, Kitchen Helpers and Related Occupations	3,827	0.8	1.4	4.3	1.1
G97.662 Other Sales and Related Occupations	2,573	1.1	0.4	5.2	0.8
G971.6621 Service Station Attendants	399	1.1	0.4	5.3	0.7
G972.6622 Grocery Clerks and Store Shelf Stockers	1,572	1.1	0.3	5.3	0.7
G973.6623 Other Elemental Sales Occupations	599	1.1	0.6	4.7	0.9
G98.668 Other Elemental Service Occupations	509	1.1	1.3	4.1	1.2
G981.6681 Dry Cleaning and Laundry Occupations	248	1.3	1.5	4.3	1.4
G982.6682 Ironing, Pressing and Finishing Occupations	48	0.9	1.1	5.4	1.1
G983.6683 Other Elemental Service Occupations	215	0.9	1.0	3.6	1.0
H Trades, transport and equipment operators and related occupations	20,050	1.9	4.0	-0.9	3.0
H0 Contractors and supervisors in trades and transportation	1,208	2.1	5.2	-2.7	3.7
H01.721 Contractors and Supervisors, Trades and Related Workers	1,157	2.1	5.3	-2.9	3.8
H011.7211 Supervisors, Machinists and Related Occupations	33	1.0	1.5	5.4	1.3
H012.7212 Contractors and Supervisors, Electrical Trades and Telecommunications Occupations	116	2.2	5.5	-3.7	4.0
H013.7213 Contractors and Supervisors, Pipefitting Trades	59	2.5	6.2	-4.4	4.5
H014.7214 Contractors and Supervisors, Metal Forming, Shaping and Erecting Trades	60	1.7	4.4	-0.1	3.1
H015.7215 Contractors and Supervisors, Carpentry Trades	176	2.5	6.7	-4.8	4.8
H016.7216 Contractors and Supervisors, Mechanic Trades	128	1.2	2.0	2.6	1.6

Camosun College Region

Projected Annual Growth Rates in Occupational Demand

	Estimated Employment	Average Annual % Change			Avg Annual % Chg Over 4 Years
	<u>2005</u>	<u>2007/2005</u>	<u>2009/2007</u>	<u>2010/2009</u>	<u>2009/2005</u>
H017.7217 Contractors and Supervisors, Heavy Construction Equipment Crews	290	2.2	5.7	-3.8	4.1
H018.7218 Supervisors, Printing and Related Occupations	50	0.8	1.1	6.2	1.0
H019.7219 Contractors and Supervisors, Other Construction Trades, Installers, Repairers and Servicers	246	2.5	6.9	-5.3	4.9
H02.722 Supervisors, Railway and Motor Transportation Occupations	47	1.9	2.1	1.6	2.1
H021.7221 Supervisors, Railway Transport Operations	-	-	-	-	-
H022.7222 Supervisors, Motor Transport & Other Ground Transit Operators	44	1.8	2.0	1.6	2.0
H1 Construction trades	5,087	2.4	6.5	-4.7	4.6
H11.725 Plumbers, Pipefitters and Gas Fitters	727	2.4	6.3	-4.6	4.5
H111.7251 Plumbers	483	2.4	6.6	-4.9	4.7
H112.7252 Steamfitters, Pipefitters and Sprinkler System Installers	168	2.4	6.0	-4.2	4.3
H113.7253 Gas Fitters	80	2.0	5.2	-3.4	3.7
H12.727 Carpenters and Cabinetmakers	2,165	2.3	6.3	-4.2	4.5
H121.7271 Carpenters	1,946	2.5	6.7	-5.0	4.8
H122.7272 Cabinetmakers	218	1.2	2.8	4.1	2.0
H13.728 Masonry and Plastering Trades	798	2.6	7.2	-5.6	5.1
H131.7281 Bricklayers	129	2.6	7.2	-5.6	5.1
H132.7282 Concrete Finishers	136	2.4	6.6	-4.7	4.7
H133.7283 Tilesetters	108	2.6	7.3	-5.8	5.2
H134.7284 Plasterers, Drywall Installers and Finishers and Lathers	424	2.7	7.4	-5.9	5.2
H14.729 Other Construction Trades	1,397	2.5	6.6	-4.8	4.7
H141.7291 Roofers and Shinglers	266	2.6	7.3	-5.7	5.2
H142.7292 Glaziers	135	1.9	4.8	-1.7	3.5
H143.7293 Insulators	83	2.5	6.9	-5.2	4.9
H144.7294 Painters and Decorators	681	2.5	6.6	-4.9	4.7
H145.7295 Floor Covering Installers	230	2.5	6.8	-5.1	4.8
H2 Stationary engineers, power station operators and electrical trades and telecommunications occupations	1,533	1.9	4.3	-2.3	3.2

Camosun College Region

Projected Annual Growth Rates in Occupational Demand

	Estimated Employment	Average Annual % Change			Avg Annual % Chg Over 4 Years
	<u>2005</u>	<u>2007/2005</u>	<u>2009/2007</u>	<u>2010/2009</u>	<u>2009/2005</u>
H21.724 Electrical Trades and Telecommunications Occupations	1,429	2.0	4.6	-2.6	3.3
H211.7241 Electricians (Except Industrial and Power System)	776	2.3	6.1	-4.4	4.4
H212.7242 Industrial Electricians	172	1.9	4.0	-1.2	3.0
H213.7243 Power System Electricians	31	1.3	2.3	-0.9	1.8
H214.7244 Electrical Power Line and Cable Workers	65	1.4	2.7	-1.6	2.1
H215.7245 Telecommunications Line and Cable Workers	108	1.6	2.8	-0.6	2.2
H216.7246 Telecommunications Installation and Repair Workers	214	1.3	1.6	1.1	1.5
H217.7247 Cable Television Service and Maintenance Technicians	61	1.6	2.6	-0.4	2.1
H22.735 Stationary Engineers and Power Station and System Operators	104	1.4	1.4	2.4	1.4
H221.7351 Stationary Engineers and Auxiliary Equipment Operators	80	1.6	1.6	2.5	1.6
H222.7352 Power Systems and Power Station Operators	23	0.9	0.8	1.8	0.8
H3 Machinists, metal forming, shaping and erecting occupations	1,281	1.3	3.1	2.5	2.3
H31.723 Machinists and Related Occupations	264	0.8	1.4	6.7	1.1
H311.7231 Machinists and Machining and Tooling Inspectors	231	0.8	1.4	6.8	1.1
H312.7232 Tool and Die Makers	31	0.7	1.3	6.9	1.0
H32.726 Metal Forming, Shaping and Erecting Trades	1,018	1.5	3.6	1.4	2.6
H321.7261 Sheet Metal Workers	189	1.9	5.1	-1.3	3.6
H322.7262 Boilermakers	38	1.3	2.8	1.9	2.1
H323.7263 Structural Metal and Platework Fabricators and Fitters	142	0.8	1.7	6.1	1.3
H324.7264 Ironworkers	107	2.2	6.0	-3.3	4.2
H325.7266 Blacksmiths and Die Setters	-	-	-	-	-
H326.7265 Welders and Related Machine Operators	538	1.4	3.1	2.1	2.3
H4 Mechanics	2,788	1.2	1.6	3.2	1.4
H41.731 Machinery and Transportation Equipment Mechanics (Except Motor Vehicle)	986	1.5	2.9	0.7	2.3
H411.7311 Construction Millwrights and Industrial Mechanics (Except Textile)	229	1.7	2.7	1.0	2.2
H412.7312 Heavy-Duty Equipment Mechanics	319	1.2	2.2	1.5	1.7
H413.7313 Refrigeration and Air Conditioning Mechanics	128	1.9	5.0	-2.6	3.5
H414.7314 Railway Carmen/women	-	-	-	-	-

Camosun College Region

Projected Annual Growth Rates in Occupational Demand

	Estimated Employment	Average Annual % Change			Avg Annual % Chg Over 4 Years
	<u>2005</u>	<u>2007/2005</u>	<u>2009/2007</u>	<u>2010/2009</u>	<u>2009/2005</u>
H415.7315 Aircraft Mechanics and Aircraft Inspectors	217	1.6	1.9	2.5	1.8
H416.7316 Machine Fitters	30	1.0	1.6	6.2	1.3
H417.7317 Textile Machinery Mechanics and Repairers	-	-	-	-	-
H418.7318 Elevator Constructors and Mechanics	54	2.6	7.1	-5.5	5.1
H42.732 Automotive service technicians	1,561	0.9	0.9	4.6	0.9
H421.7321 Automotive Service Technicians, Truck Mechanics and Mechanical Repairers	1,179	1.0	0.9	4.6	0.9
H422.7322 Motor Vehicle Body Repairers	382	0.8	0.8	4.9	0.8
H43.733 Other Mechanics	239	1.1	1.4	4.0	1.3
H431.7331 Oil and Solid Fuel Heating Mechanics	-	-	-	-	-
H432.7332 Electric Appliance Servicers and Repairers	108	1.0	1.2	4.0	1.1
H433.7333 Electrical Mechanics	34	0.9	1.6	4.9	1.3
H434.7334 Motorcycle and Other Related Mechanics	27	1.0	0.7	4.9	0.9
H435.7335 Other Small Engine and Equipment Mechanics	55	0.9	1.0	4.6	1.0
H5 Other trades n.e.c.	1,212	1.2	2.2	2.9	1.7
H51.734 Upholsterers, Tailors, Shoe Repairers, Jewellers and Related Occupations	330	0.9	1.0	6.0	1.0
H511.7341 Upholsterers	61	0.9	1.0	5.5	0.9
H512.7342 Tailors, Dressmakers, Furriers and Milliners	213	0.9	1.1	6.3	1.0
H513.7343 Shoe Repairers and Shoemakers	17	0.8	1.0	5.2	0.9
H514.7344 Jewellers, Watch Repairers and Related Occupations	41	0.9	0.7	5.6	0.8
H52.738 Printing Press Operators, Commercial Divers and Other Trades and Related Occupations n.e.c.	227	0.9	1.5	5.1	1.2
H521.7381 Printing Press Operators	153	0.9	1.4	6.1	1.1
H522.7382 Commercial Divers	14	0.9	1.3	1.0	1.1
H523.7383 Other Trades and Related Occupations	62	1.1	1.8	3.2	1.5
H53.744 Other installers, repairers and servicers	657	1.5	3.0	0.6	2.3
H531.7441 Residential and Commercial Installers and Servicers	277	2.2	5.9	-3.5	4.2
H532.7442 Waterworks and Gas Maintenance Workers	46	1.0	1.1	0.1	1.0
H533.7443 Automotive Mechanical Installers and Servicers	144	1.0	0.7	4.8	0.9

Camosun College Region

Projected Annual Growth Rates in Occupational Demand

	Estimated Employment	Average Annual % Change			Avg Annual % Chg Over 4 Years
	<u>2005</u>	<u>2007/2005</u>	<u>2009/2007</u>	<u>2010/2009</u>	<u>2009/2005</u>
H534.7444 Pest Controllers and Fumigators	-	-	-	-	-
H535.7445 Other Repairers and Servicers	177	1.0	0.9	4.5	0.9
H6 Heavy equipment and crane operators including drillers	939	2.2	5.6	-3.9	4.0
H61.742 Heavy Equipment Operators	798	2.2	5.5	-3.9	4.0
H611.7421 Heavy Equipment Operators (Except Crane)	690	2.4	6.1	-4.5	4.4
H612.7422 Public Works Maintenance Equipment Operators	112	1.1	2.0	-0.2	1.5
H62.737 Crane Operators, Drillers and Blasters	141	2.3	5.9	-4.0	4.2
H621.7371 Crane Operators	85	2.1	5.3	-3.0	3.8
H622.7372 Drillers and Blasters - Surface Mining Quarrying and Construction	42	2.5	6.3	-5.0	4.6
H623.7373 Water Well Drillers	15	2.7	7.5	-6.0	5.3
H7 Transportation equipment operators and related workers, excluding labourers	3,379	1.9	2.2	1.9	2.1
H71.741 Motor Vehicle and Transit Drivers	2,899	1.9	2.2	1.9	2.1
H711.7411 Truck Drivers	1,458	2.3	2.7	1.3	2.6
H712.7412 Bus Drivers and Subway and Other Transit Operators	498	1.6	1.9	1.6	1.8
H713.7413 Taxi and Limousine Drivers and Chauffeurs	277	1.8	2.2	1.7	2.0
H714.7414 Delivery and Courier Service Drivers	669	1.1	1.2	3.8	1.2
H72.736 Train Crew Operating Occupations	16	2.2	2.7	1.1	2.5
H721.7361 Railway and Yard Locomotive Engineers	13	2.2	2.9	0.8	2.6
H722.7362 Railway Conductors and Brakemen/women	-	-	-	-	-
H73.743 Other Transport Equipment Operators and Related Workers	460	1.9	2.2	1.6	2.1
H731.7431 Railway Yard Workers	-	-	-	-	-
H732.7432 Railway Track Maintenance Workers	11	1.9	2.6	1.2	2.3
H733.7433 Deck Crew Water Transport	165	1.7	1.9	1.6	1.8
H734.7434 Engine Room Crew, Water Transport	25	1.8	2.0	2.0	1.9
H735.7435 Lock and Cable Ferry Operators and Related Occupations	103	2.3	2.6	1.5	2.5
H736.7436 Boat Operators	41	2.0	2.1	1.7	2.1
H737.7437 Air Transport Ramp Attendants	113	1.9	2.1	1.8	2.1

Camosun College Region

Projected Annual Growth Rates in Occupational Demand

	Estimated Employment	Average Annual % Change			Avg Annual % Chg Over 4 Years
	<u>2005</u>	<u>2007/2005</u>	<u>2009/2007</u>	<u>2010/2009</u>	<u>2009/2005</u>
H8 Trades helpers, construction and transportation labourers and related occupations	2,623	1.8	3.9	-1.0	2.9
H81.745 Longshore Workers and Material Handlers	1,158	1.3	1.5	3.2	1.4
H811.7451 Longshore Workers	193	1.7	1.8	2.6	1.8
H812.7452 Material Handlers	964	1.2	1.4	3.3	1.3
H82.761 Trades Helpers and Labourers	1,250	2.4	6.4	-4.5	4.5
H821.7611 Construction Trades Helpers and Labourers	1,168	2.5	6.6	-4.9	4.7
H822.7612 Other Trades Helpers and Labourers	83	1.4	2.3	1.7	1.9
H83.762 Public Works and Other Labourers n.e.c.	216	1.1	1.8	-0.1	1.5
H831.7621 Public Works and Maintenance Labourers	193	1.0	1.7	-0.2	1.3
H832.7622 Railway and Motor Transport Labourers	23	2.3	3.0	1.0	2.7
I Occupations unique to primary industry	2,489	1.1	0.8	2.7	1.0
I0 Occupations unique to agriculture, excluding labourers	1,317	0.9	0.6	3.8	0.7
I01.825 Contractors, Operators and Supervisors in Agriculture, Horticulture and Aquaculture	762	0.9	0.6	3.5	0.8
I011.8251 Farmers and Farm Managers	482	0.9	0.4	4.3	0.7
I012.8252 Agricultural and Related Service Contractors and Managers	17	1.0	1.1	2.2	1.0
I013.8253 Farm Supervisors and Specialized Livestock Workers	52	1.0	0.9	2.9	1.0
I014.8254 Nursery and Greenhouse Operators and Managers	44	0.9	0.4	4.3	0.7
I015.8255 Landscaping & Grounds Maintenance Contractors & Managers	32	1.5	3.0	-0.2	2.3
I016.8256 Supervisors, Landscape and Horticulture	93	0.8	0.9	1.2	0.9
I017.8257 Aquaculture Operators and Managers	39	0.8	0.6	2.7	0.7
I02.843 Agriculture and Horticulture Workers	558	0.9	0.5	4.1	0.7
I021.8431 General Farm Workers	362	0.9	0.5	4.1	0.7
I022.8432 Nursery and Greenhouse Workers	196	0.8	0.4	4.2	0.6
I1 Occupations unique to forestry operations, mining, oil and gas extraction and fishing excluding labourers	437	1.7	1.1	1.6	1.4
I11.821 Supervisors, Logging and Forestry	46	1.3	0.5	0.6	0.9
I111.8211 Supervisors, Logging and Forestry	45	1.3	0.5	0.6	0.9
I12.822 Supervisors, Mining, Oil and Gas	21	3.0	2.6	-1.4	2.9

Camosun College Region

Projected Annual Growth Rates in Occupational Demand

	Estimated Employment	Average Annual % Change			Avg Annual % Chg Over 4 Years
	<u>2005</u>	<u>2007/2005</u>	<u>2009/2007</u>	<u>2010/2009</u>	<u>2009/2005</u>
I121.8221 Supervisors, Mining and Quarrying	-	-	-	-	-
I122.8222 Supervisors, Oil and Gas Drilling and Service	12	4.5	3.5	-4.4	4.1
I13.823 Underground Miners, Oil and Gas Drillers and Related Workers	21	3.0	1.8	-0.9	2.4
I131.8231 Underground Production and Development Miners	11	1.3	1.5	-0.1	1.4
I132.8232 Oil and Gas Well Drillers, Servicers, Testers and Related Workers	12	4.6	2.8	-2.3	3.8
I14.841 Mine Service Workers and Operators in Oil and Gas Drilling	25	3.7	3.1	-2.1	3.5
I141.8411 Underground Mine Service and Support Workers	-	-	-	-	-
I142.8412 Oil and Gas Well Drilling Workers and Services Operators	15	5.0	3.0	-3.2	4.2
I15.824 Logging Machinery Operators	55	1.8	1.0	-1.1	1.4
I151.8241 Logging Machinery Operators	54	1.8	0.9	-1.1	1.4
I16.842 Logging and Forestry Workers	143	1.3	0.4	-0.1	0.9
I161.8421 Chain-saw and Skidder Operators	61	1.7	0.2	-0.6	0.9
I162.8422 Silviculture and Forestry Workers	82	1.0	0.5	0.5	0.8
I17.826 Fishing Vessel Masters and Skippers and Fishermen/women	96	1.6	1.4	6.9	1.5
I171.8261 Fishing Masters and Officers	-	-	-	-	-
I172.8262 Fishing Vessel Skippers and Fishermen/women	87	1.6	1.4	6.9	1.5
I18.844 Other Fishing and Trapping Occupations	26	1.4	1.4	6.6	1.4
I181.8441 Fishing Vessel Deckhands	20	1.6	1.4	7.0	1.5
I182.8442 Trappers and Hunters	-	-	-	-	-
I2 Primary production labourers	738	1.1	1.1	1.4	1.1
I21.861 Primary Production Labourers	736	1.1	1.1	1.4	1.1
I211.8611 Harvesting Labourers	52	0.9	0.4	4.3	0.6
I212.8612 Landscaping and Grounds Maintenance Labourers	523	0.9	1.2	1.4	1.1
I213.8613 Aquaculture and Marine Harvest Labourers	42	1.0	0.7	4.5	0.9
I214.8614 Mine Labourers	-	-	-	-	-
I215.8615 Oil and Gas Drilling, Servicing and Related Labourers	21	4.2	3.4	-3.6	3.9
I216.8616 Logging and Forestry Labourers	93	1.6	0.2	-0.1	0.9
J Occupations unique to processing, manufacturing and utilities	3,834	1.4	1.5	4.6	1.5
J0 Supervisors in manufacturing	292	1.6	1.6	4.3	1.6

Camosun College Region

Projected Annual Growth Rates in Occupational Demand

	Estimated Employment	Average Annual % Change			Avg Annual % Chg Over 4 Years
	<u>2005</u>	<u>2007/2005</u>	<u>2009/2007</u>	<u>2010/2009</u>	<u>2009/2005</u>
J01.921 Supervisors, Processing Occupations	164	2.2	1.5	2.5	1.9
J011.9211 Supervisors, Mineral and Metal Processing	32	1.0	2.3	5.0	1.7
J012.9212 Supervisors, Petroleum, Gas and Chemical Processing and Utilities	27	4.2	1.0	-0.3	2.6
J013.9213 Supervisors, Food, Beverage and Tobacco Processing	62	2.8	1.3	1.7	2.1
J014.9214 Supervisors, Plastic and Rubber Products Manufacturing	-	-	-	-	-
J015.9215 Supervisors, Forest Products Processing	27	0.9	1.0	3.8	0.9
J016.9216 Supervisors, Textile Processing	-	-	-	-	-
J02.922 Supervisors, Assembly and Fabrication	126	0.9	1.7	6.5	1.3
J021.9221 Supervisors, Motor Vehicle Assembling	-	-	-	-	-
J022.9222 Supervisors, Electronics Manufacturing	20	0.7	1.1	7.1	0.9
J023.9223 Supervisors, Electrical Products Manufacturing	-	-	-	-	-
J024.9224 Supervisors, Furniture and Fixtures Manufacturing	17	0.6	1.2	7.5	0.9
J025.9225 Supervisors, Fabric, Fur and Leather Products Manufacturing	15	0.7	1.4	8.4	1.1
J026.9226 Supervisors, Other Mechanical and Metal Products Manufacturing	34	0.9	1.9	5.6	1.5
J027.9227 Supervisors, Other Products Manufacturing and Assembly	27	1.0	2.1	4.8	1.6
J1 Machine operators in manufacturing	1,580	1.5	1.4	4.6	1.5
J11.923 Central Control and Process Operators in Manufacturing and Processing	53	5.3	2.1	-0.6	3.8
J111.9231 Central Control & Process Operators Mineral & Metal Processing	13	1.1	2.0	2.7	1.6
J112.9232 Petroleum, Gas and Chemical Process Operators	31	8.0	2.3	-2.2	5.3
J113.9233 Pulping Control Operators	-	-	-	-	-
J114.9234 Papermaking and Coating Control Operators	-	-	-	-	-
J12.941 Machine Operators and Related Workers in Metal and Mineral Products Processing	150	1.1	2.3	4.6	1.7
J121.9411 Machine Operators, Mineral and Metal Processing	29	1.1	2.0	3.7	1.6
J122.9412 Foundry Workers	15	1.0	1.7	3.8	1.3

Camosun College Region

Projected Annual Growth Rates in Occupational Demand

	Estimated Employment	Average Annual % Change			Avg Annual % Chg Over 4 Years
	<u>2005</u>	<u>2007/2005</u>	<u>2009/2007</u>	<u>2010/2009</u>	<u>2009/2005</u>
J123.9413 Glass Forming and Finishing Machine Operators and Glass Cutters	37	0.8	1.5	7.6	1.2
J124.9414 Concrete, Clay and Stone Forming Operators	61	1.3	3.2	3.0	2.3
J125.9415 Inspectors and Testers, Mineral and Metal Processing	14	0.8	1.1	6.3	1.0
J13.942 Machine Operators and Related Workers in Chemical, Plastic and Rubber Processing	71	0.9	0.9	2.4	0.9
J131.9421 Chemical Plant Machine Operators	12	1.4	1.3	4.0	1.3
J132.9422 Plastics Processing Machine Operators	-	-	-	-	-
J133.9423 Rubber Processing Machine Operators and Related Workers	11	0.7	1.0	6.0	0.8
J134.9424 Water and Waste Plant Operators	42	0.8	0.7	0.7	0.7
J14.943 Machine Operators and Related Workers in Pulp and Paper Production and Wood Processing	123	0.9	1.4	3.5	1.2
J141.9431 Sawmill Machine Operators	29	0.7	1.5	3.7	1.1
J142.9432 Pulp Mill Machine Operators	-	-	-	-	-
J143.9433 Papermaking and Finishing Machine Operators	-	-	-	-	-
J144.9434 Other Wood Processing Machine Operators	40	0.8	1.8	3.1	1.3
J145.9435 Paper Converting Machine Operators	-	-	-	-	-
J146.9436 Lumber Graders and Other Wood Processing Inspectors and Graders	28	0.5	0.8	4.5	0.6
J15.944 Machine Operators and Related Workers in Textile Processing	40	0.9	1.1	6.6	1.0
J151.9441 Textile Fibre and Yarn Preparation Machine Operators	-	-	-	-	-
J152.9442 Weavers, Knitters and Other Fabric-Making Occupations	17	0.8	1.0	7.3	0.9
J153.9443 Textile Dyeing and Finishing Machine Operators	-	-	-	-	-
J154.9444 Textile Inspectors, Graders and Samplers	14	0.8	1.3	6.5	1.1
J16.945 Machine Operators and Related Workers in Fabric, Fur and Leather Products Manufacturing	316	0.8	1.3	7.6	1.1
J161.9451 Sewing Machine Operators	280	0.8	1.3	7.6	1.1
J162.9452 Fabric, Fur and Leather Cutters	24	0.7	1.3	8.0	1.0
J163.9453 Hide and Pelt Processing Workers	-	-	-	-	-

Camosun College Region

Projected Annual Growth Rates in Occupational Demand

	Estimated Employment	Average Annual % Change			Avg Annual % Chg Over 4 Years
	<u>2005</u>	<u>2007/2005</u>	<u>2009/2007</u>	<u>2010/2009</u>	<u>2009/2005</u>
J164.9454 Inspectors and Testers, Fabric, Fur and Leather Products Manufacturing	-	-	-	-	-
J17.946 Machine Operators and Related Workers in Food, Beverage and Tobacco Processing	313	3.3	1.4	1.3	2.4
J171.9461 Process Control and Machine Operators, Food and Beverage Processing	146	3.1	1.4	1.4	2.3
J172.9462 Industrial Butchers and Meat Cutters, Poultry Preparers and Related Workers	76	3.6	1.5	0.8	2.6
J173.9463 Fish Plant Workers	59	3.9	1.7	1.1	2.9
J174.9464 Tobacco Processing Machine Operators	0	-	-	-	-
J175.9465 Testers and Graders, Food and Beverage Processing	30	2.0	1.2	2.5	1.6
J18.947 Printing Machine Operators and Related Occupations	332	0.9	1.0	5.7	1.0
J181.9471 Printing Machine Operators	89	0.8	1.2	6.5	1.0
J182.9472 Camera, Platemaking and Other Pre-Press Occupations	37	0.8	1.2	6.1	1.0
J183.9473 Binding and Finishing Machine Operators	55	0.9	1.4	6.5	1.2
J184.9474 Photographic and Film Processors	152	1.0	0.7	4.9	0.9
J19.951 Machining, Metalworking, Woodworking and Related Machine Operators	175	0.8	1.6	6.4	1.2
J191.9511 Machining Tool Operators	29	0.9	1.6	6.4	1.2
J192.9512 Forging Machine Operators	-	-	-	-	-
J193.9513 Woodworking Machine Operators	65	0.8	1.7	5.7	1.3
J194.9514 Metalworking Machine Operators	36	0.7	1.5	7.0	1.1
J196.9516 Other Metal Products Machine Operators.	16	0.9	1.9	5.9	1.4
J197.9517 Other Products Machine Operators	20	0.7	1.3	7.7	1.0
J2 Assemblers in manufacturing	944	0.9	1.7	5.8	1.3
J21.948 Mechanical, Electrical and Electronics Assemblers	339	0.8	1.4	6.7	1.1
J211.9481 Aircraft Assemblers and Aircraft Assembly Inspectors	16	0.8	1.4	6.2	1.2
J212.9482 Motor Vehicle Assemblers, Inspectors and Testers	53	0.9	1.0	5.7	1.0
J213.9483 Electronics Assemblers, Fabricators, Inspectors and Testers	110	0.8	1.4	7.3	1.1

Camosun College Region

Projected Annual Growth Rates in Occupational Demand

	Estimated Employment	Average Annual % Change			Avg Annual % Chg Over 4 Years
	<u>2005</u>	<u>2007/2005</u>	<u>2009/2007</u>	<u>2010/2009</u>	<u>2009/2005</u>
J214.9484 Assemblers and Inspectors, Electrical Appliance, Apparatus and Equipment Manufacturing	38	0.7	1.3	7.5	1.0
J215.9485 Assemblers, Fabricators and Inspectors, Industrial Electrical Motors and Transformers	28	0.9	1.9	5.2	1.4
J216.9486 Mechanical Assemblers and Inspectors	72	0.9	1.6	6.6	1.3
J217.9487 Machine Operators and Inspectors, Electrical Apparatus Manufacturing	20	0.7	1.4	8.4	1.1
J22.949 Other Assembly and Related Occupations	608	1.0	1.9	5.3	1.4
J221.9491 Boat Assemblers and Inspectors	104	0.9	1.5	7.1	1.2
J222.9492 Furniture and Fixture Assemblers and Inspectors	189	0.9	1.5	6.0	1.2
J223.9493 Other Wood Products Assemblers and Inspectors	64	1.3	2.6	2.6	2.0
J224.9494 Furniture Finishers and Refinishers	53	0.9	1.6	5.5	1.2
J225.9495 Plastic Products Assemblers, Finishers and Inspectors	19	0.7	1.3	7.8	1.0
J226.9496 Painters and Coaters - Industrial	109	1.4	2.9	2.4	2.2
J227.9497 Plating, Metal Spraying and Related Operators	16	0.7	1.4	7.7	1.1
J228.9498 Other Assemblers and Inspectors	56	0.9	1.4	6.7	1.2
J3 Labourers in processing, manufacturing and utilities	1,015	1.8	1.4	3.7	1.6
J31.961 Labourers in Processing, Manufacturing and Utilities	1,018	1.8	1.4	3.7	1.6
J311.9611 Labourers in Mineral and Metal Processing	39	0.9	2.0	4.6	1.5
J312.9612 Labourers in Metal Fabrication	87	0.9	1.9	6.2	1.4
J313.9613 Labourers in Chemical Products Processing and Utilities	11	4.7	1.4	0.7	3.1
J314.9614 Labourers in Wood Pulp and Paper Processing	152	0.7	1.2	3.9	1.0
J315.9615 Labourers in Rubber and Plastic Products Manufacturing	13	0.6	1.3	7.3	1.0
J316.9616 Labourers in Textile Processing	13	0.6	1.3	7.9	1.0
J317.9617 Labourers in Food Beverage and Tobacco Processing	396	2.8	1.3	1.8	2.1
J318.9618 Labourers in Fish Processing	61	3.7	1.6	1.2	2.7
J319.9619 Other Labourers in Processing, Manufacturing and Utilities	244	0.9	1.4	6.1	1.2

- suppressed due to small numbers