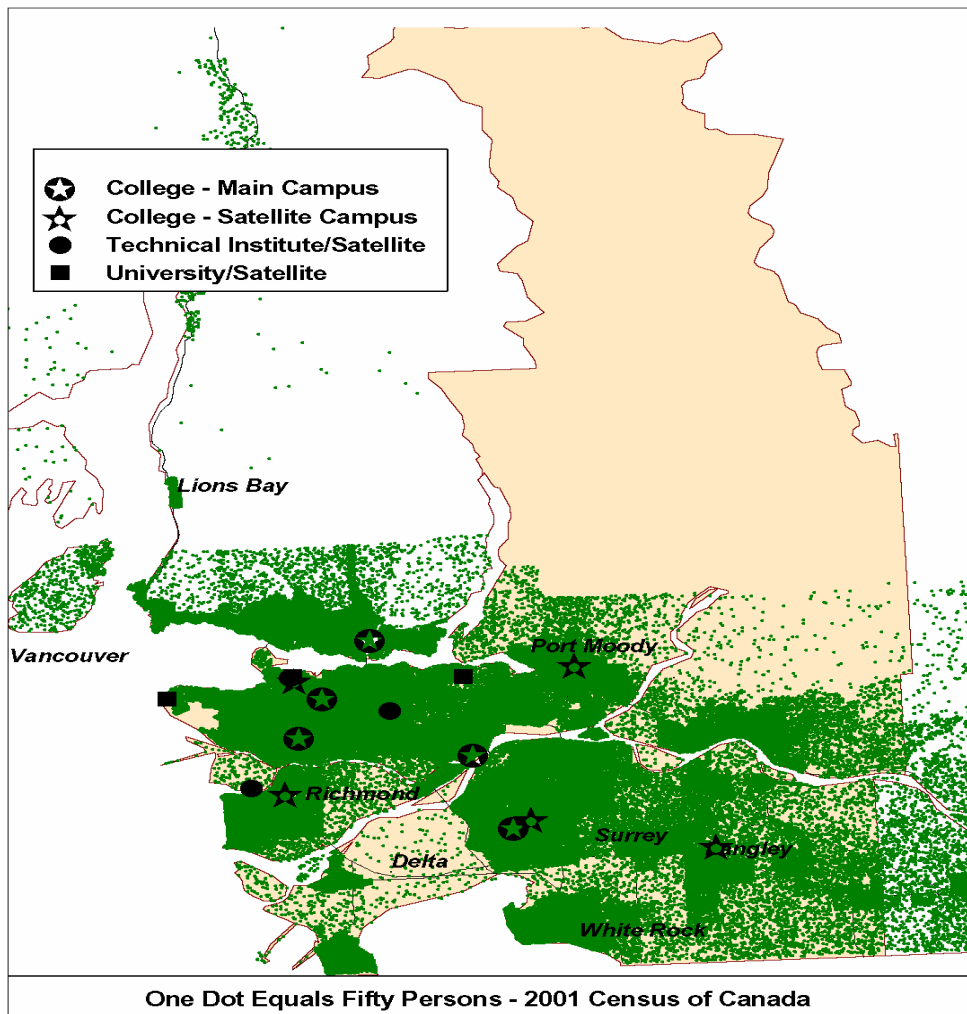


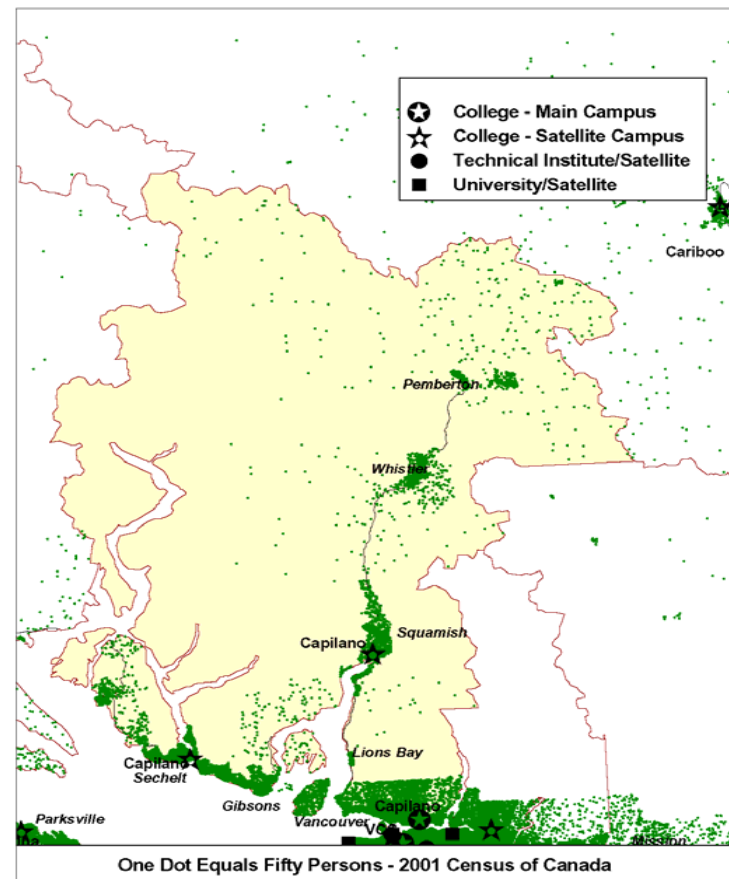
# INDUSTRY AND OCCUPATION PROJECTIONS: 2006 -- 2010

## LOWER MAINLAND COLLEGE REGIONS

Vancouver, Douglas and Kwantlan College Regions



Capilano College Region



# Background Information on Geographic Location of Population in the Lower Mainland College Regions

*In the College Region Model, Vancouver, Kwantlen, Douglas and Capilano are treated as one because it is a Labour Market Area and students commute between the regions to attend the school of their choice. In 2005, the estimated population for the region was 2,216,839 which represented 52.1% of the BC population. Its youth population, age 15-29, was 441,874 and represented 51.3 % of BC's youth.*

<b>Vancouver College Region</b>				
<b>Major Cities</b>	<b>Population 2005</b>	<b>% of Region</b>	<b>Land Area</b>	<b>Population Density</b>
			<small>Sq Km</small>	<small>Persons per Sq Km</small>
Vancouver	583,267	98.3	114.7	5,086.5
Rest of Region	10,006	1.7	16.5	606.1
<b>Total Region</b>	<b>593,273</b>	<b>100.0</b>	<b>131.2</b>	<b>4,522.6</b>
<b>Region as % of BC</b>	<b>13.9</b>		<b>0.01</b>	
<b>Youth Age 15-29</b>	<b>119,373</b>			
<b>Youth in Region as % of BC</b>	<b>13.9</b>			

<b>Capilano College Region</b>				
<b>Major Cities</b>	<b>Population 2005</b>	<b>% of Region</b>	<b>Land Area</b>	<b>Population Density</b>
			<small>Sq Km</small>	<small>Persons per Sq Km</small>
North Vancouver DM	87,083	35.1	160.5	542.7
North Vancouver C	46,759	18.8	12.0	3,912.9
West Vancouver	44,149	17.8	87.4	505.0
Squamish	15,726	6.3	95.4	164.8
Whistler	9,775	3.9	161.7	60.4
Sechelt	8,901	3.6	39.7	224.2
Gibsons	4,349	1.8	4.3	1,006.7
Bowen Island	3,424	1.4	49.9	68.6
Pemberton	2,517	1.0	4.4	570.7
Lions Bay	1,421	0.6	2.6	557.3
Rest of Region	23,981	9.7	12,973.0	1.8
<b>Total Region</b>	<b>248,085</b>	<b>100.0</b>	<b>13,590.9</b>	<b>18.3</b>
<b>Region as % of BC</b>	<b>5.8</b>		<b>1.5</b>	
<b>Youth Age 15-29</b>	<b>48,021</b>			
<b>Youth in Region as % of BC</b>	<b>5.6</b>			

<b>Kwantlan College Region</b>				
<b>Major Cities</b>	<b>Population 2005</b>	<b>% of Region</b>	<b>Land Area</b>	<b>Population Density</b>
			<small>Sq Km</small>	<small>Persons per Sq Km</small>
Surrey	393,137	48.4	317.4	1,238.6
Richmond	173,430	21.3	128.7	1,347.7
Delta	102,655	12.6	183.8	558.6
Langley DM	97,125	11.9	306.8	316.6
City of Langley	25,716	3.2	10.2	2,516.2
White Rock	19,577	2.4	5.3	3,707.8
Rest of Region	1,394	0.2	17.5	79.8
<b>Total Region</b>	<b>813,034</b>	<b>100.0</b>	<b>969.6</b>	<b>838.5</b>
<b>Region as % of BC</b>	<b>19.1</b>		<b>0.1</b>	
<b>Youth Age 15-29</b>	<b>164,393</b>			
<b>Youth in Region as % of BC</b>	<b>19.1</b>			

<b>Douglas College Region</b>				
<b>Major Cities</b>	<b>Population 2005</b>	<b>% of Region</b>	<b>Land Area</b>	<b>Population Density</b>
			<small>Sq Km</small>	<small>Persons per Sq Km</small>
Burnaby	204,324	36.3	90.1	2,268.0
Coquitlam	121,973	21.7	121.7	1,002.4
Maple Ridge	73,280	13.0	265.7	275.8
Port Coquitlam	57,563	10.2	28.8	1,999.4
New Westminster	57,480	10.2	15.4	3,732.5
Port Moody	28,458	5.1	25.6	1,110.8
Pitt Meadows	16,673	3.0	85.4	195.3
Anmore	1,673	0.3	27.4	61.0
Belcarra	723	0.1	5.5	132.4
Rest of Region	300	0.1	1,624.9	0.2
<b>Total Region</b>	<b>562,447</b>	<b>100.0</b>	<b>2,290.5</b>	<b>245.6</b>
<b>Region as % of BC</b>	<b>13.2</b>		<b>0.2</b>	
<b>Youth Age 15-29</b>	<b>110,087</b>			
<b>Youth in Region as % of BC</b>	<b>12.8</b>			

## **Note to Users**

**All assumptions relating to employment are based on past conditions, modified wherever possible to take into consideration future changes. Consequently, the resulting employment projections are not necessarily what will be, but rather what could be, given the realization of these conditions. It is certainly possible that unforeseen changes in factors such as economic development, government policy, land use and zoning will affect future employment. Consequently, the projections should only be regarded as one possible scenario on the future size and distribution of the workforce.**

# Regional Employment Projection Model (REPM)

BC STATS is grateful for the support and financial assistance from the Ministry of Advanced Education in developing the model.

## Contents

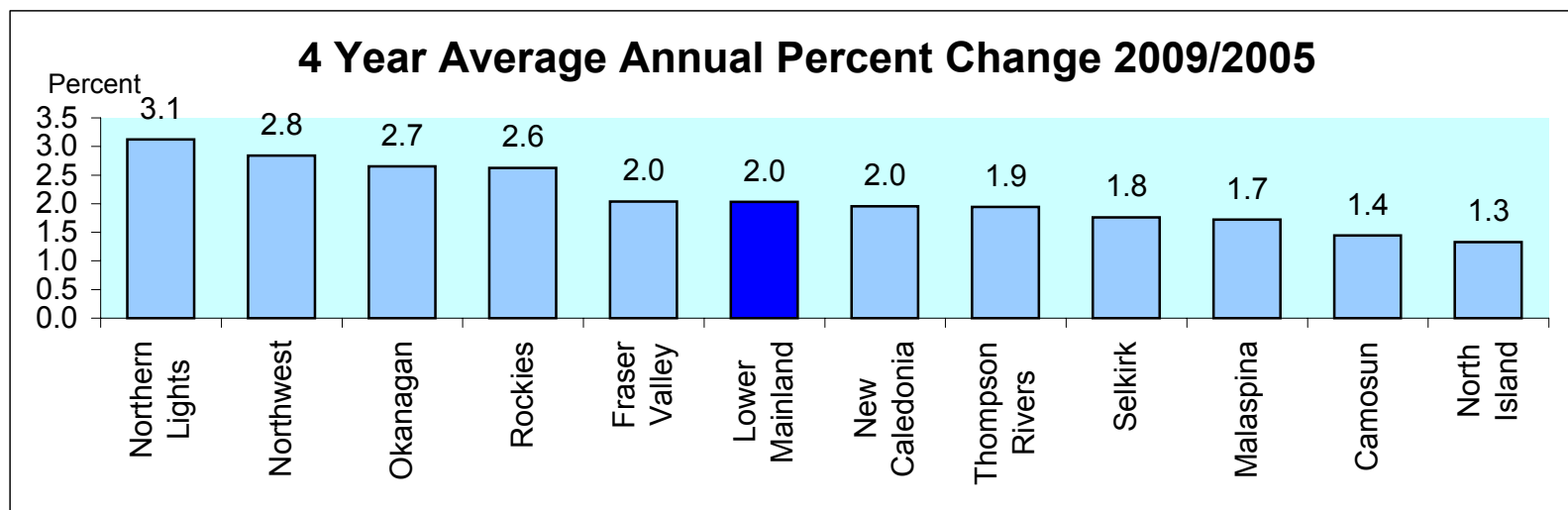
1. Projected Annual Growth in Employment Demand by College Region
2. Industrial Structure in the College Region Compared with BC, 2005 and 2009
3. Projected Annual Growth in Employment Demand by Industry
4. Occupational Structure in the College Region Compared with BC, 2005 and 2009
5. Projected Annual Growth Rates in Occupational Demand (1-digit)
6. Projected Annual Growth Rates in Occupational Demand (2-digits)

## Appendices

1. Methodology
2. COPS Industry Conversion to REPM
3. Regional District to College Region Conversion for REPM
4. Projected Annual Growth Rates in Occupational Demand (3-digit)
5. Projected Annual Growth Rates in Occupational Demand (4-digit)

# Projected Annual Growth in Employment Demand by College Region

	Estimated Employment	Projected Employment Levels		Average Annual % Chg			Avg Annual % Chg Over 4 Years
	<u>2005</u>	<u>2009</u>	<u>2010</u>	<u>2007/2005</u>	<u>2009/2007</u>	<u>2010/2009</u>	<u>2009/2005</u>
Northern Lights	34,708	39,046	39,220	3.1	2.9	0.4	3.1
Northwest	34,597	38,531	39,845	2.3	3.2	3.4	2.8
Okanagan	175,281	193,888	201,600	2.3	2.9	4.0	2.7
Rockies	37,929	41,910	43,335	2.3	2.8	3.4	2.6
Fraser Valley	120,271	130,067	133,725	1.8	2.2	2.8	2.0
<b>Lower Mainland*</b>	<b>1,182,258</b>	<b>1,278,495</b>	<b>1,327,306</b>	<b>2.1</b>	<b>1.9</b>	<b>3.8</b>	<b>2.0</b>
New Caledonia	75,311	81,207	83,482	1.8	2.0	2.8	2.0
Thompson Rivers	85,651	92,310	94,914	1.8	2.0	2.8	1.9
Selkirk	36,829	39,421	40,304	1.5	2.0	2.2	1.8
Malaspina	109,580	117,129	120,067	1.4	2.0	2.5	1.7
Camosun	167,460	177,149	181,894	1.3	1.6	2.7	1.4
North Island	70,227	73,956	75,509	1.2	1.4	2.1	1.3
<b>Total</b>	<b>2,130,101</b>	<b>2,303,108</b>	<b>2,381,200</b>	<b>2.0</b>	<b>2.0</b>	<b>3.4</b>	<b>2.0</b>

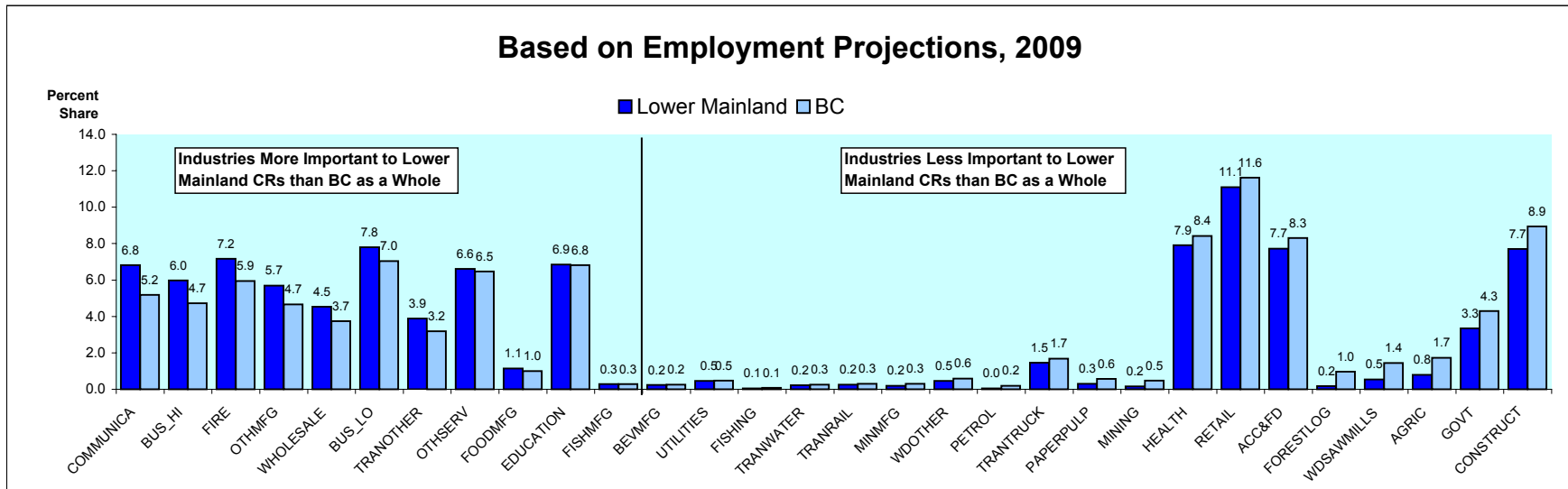
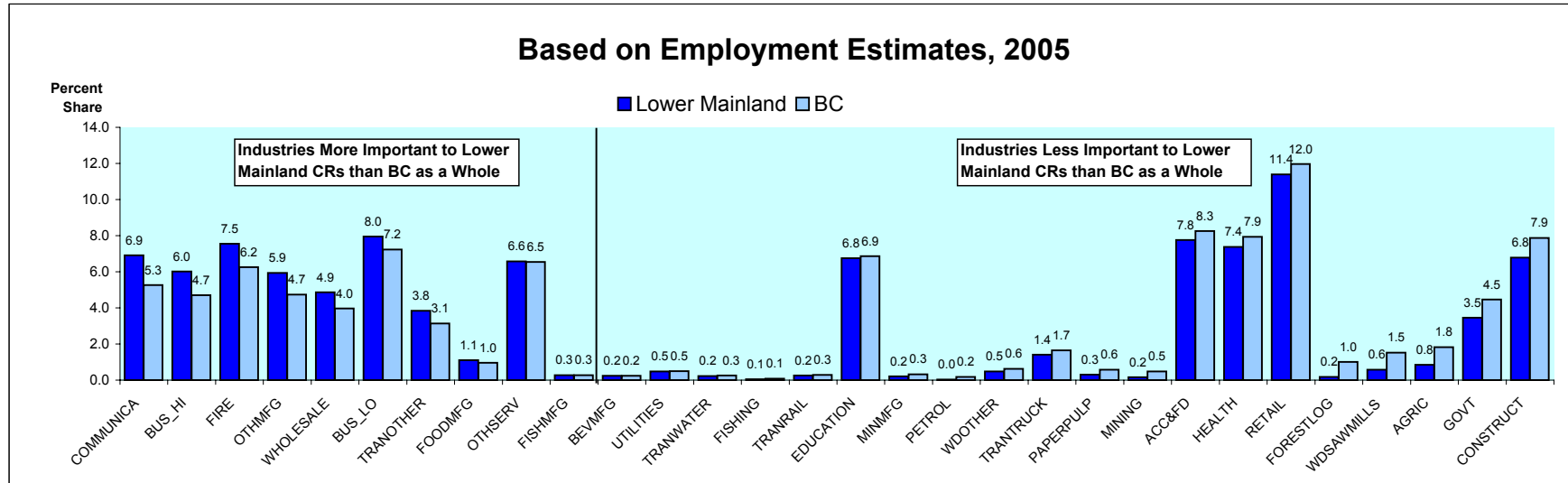


\* Includes College Regions of Vancouver, Kwantlen, Douglas and Capilano.

# Industrial Structure in the Lower Mainland College Regions Compared with BC

## Percent Share of Employment by Industry

Ranked by the Percentage Point Difference in the Industry Share in the College Region Compared with BC



## College Regions of the Lower Mainland\* College Region

### Projected Annual Growth in Employment Demand by Industry

	Estimated	Projected		Average Annual % Chg			Avg Annual % Chg
	Employment	Employment Levels					Over 4 Years
	<u>2005</u>	<u>2009</u>	<u>2010</u>	<u>2007/2005</u>	<u>2009/2007</u>	<u>2010/2009</u>	<u>2009/2005</u>
ACC&FD	91,679	98,764	103,848	1.8	2.0	5.1	1.9
AGRIC	9,934	10,186	10,630	0.9	0.4	4.4	0.6
BEVMFG	2,772	3,097	3,128	4.0	1.7	1.0	2.9
BUS_HI	71,105	76,405	83,057	2.3	1.3	8.7	1.9
BUS_LO	94,017	99,723	102,806	2.2	0.8	3.1	1.5
COMMUNICA	81,630	87,087	88,309	1.9	1.4	1.4	1.7
CONSTRUCT	80,222	98,558	92,600	3.0	7.9	-6.0	5.7
EDUCATION	79,876	87,661	89,908	2.3	2.5	2.6	2.4
FIRE	89,237	91,667	96,007	1.6	-0.3	4.7	0.7
FISHING	621	658	705	1.6	1.4	7.1	1.5
FISHMFG	3,303	3,691	3,727	4.0	1.7	1.0	2.9
FOODMFG	12,985	14,554	14,717	4.2	1.7	1.1	3.0
FORESTLOG	2,169	2,231	2,211	1.8	-0.4	-0.9	0.7
GOVT	40,793	42,748	43,301	1.1	1.2	1.3	1.2
HEALTH	87,200	101,226	105,742	3.9	3.8	4.5	4.0
MINING	1,931	1,975	2,013	0.7	0.5	1.9	0.6
MINMFG	2,399	2,429	2,432	0.5	0.1	0.2	0.3
OTHMFG	70,110	72,694	79,094	0.6	1.2	8.8	0.9
OTHSERV	77,682	84,552	89,414	2.5	1.8	5.8	2.2
PAPERPULP	3,603	3,858	3,878	2.2	1.2	0.5	1.8
PETROL	433	523	490	6.1	3.9	-6.3	5.2
PETROLMFG	696	1,391	1,391	50.0 **	0.0 **	0.0 **	25.0 **
RETAIL	134,623	141,937	151,706	2.0	0.7	6.9	1.4
TRANOTHER	45,419	49,701	50,916	2.4	2.3	2.4	2.4
TRANRAIL	2,932	3,148	3,222	1.5	2.1	2.3	1.8
TRANTRUCK	16,575	18,569	19,061	3.2	2.6	2.7	3.0
TRANWATER	2,676	2,817	2,881	0.8	1.8	2.3	1.3
UTILITIES	5,701	5,910	6,011	1.4	0.4	1.7	0.9
WDOOTHER	5,675	5,813	6,116	0.4	0.8	5.2	0.6
WDSAWMILLS	6,774	6,938	7,301	0.4	0.8	5.2	0.6
WHOLESALE	57,484	57,988	60,685	1.0	-0.6	4.7	0.2
<b>ALL INDUSTRIES</b>	<b>1,182,258</b>	<b>1,278,495</b>	<b>1,327,306</b>	<b>2.1</b>	<b>1.9</b>	<b>3.8</b>	<b>2.0</b>

\*\*Use with caution.

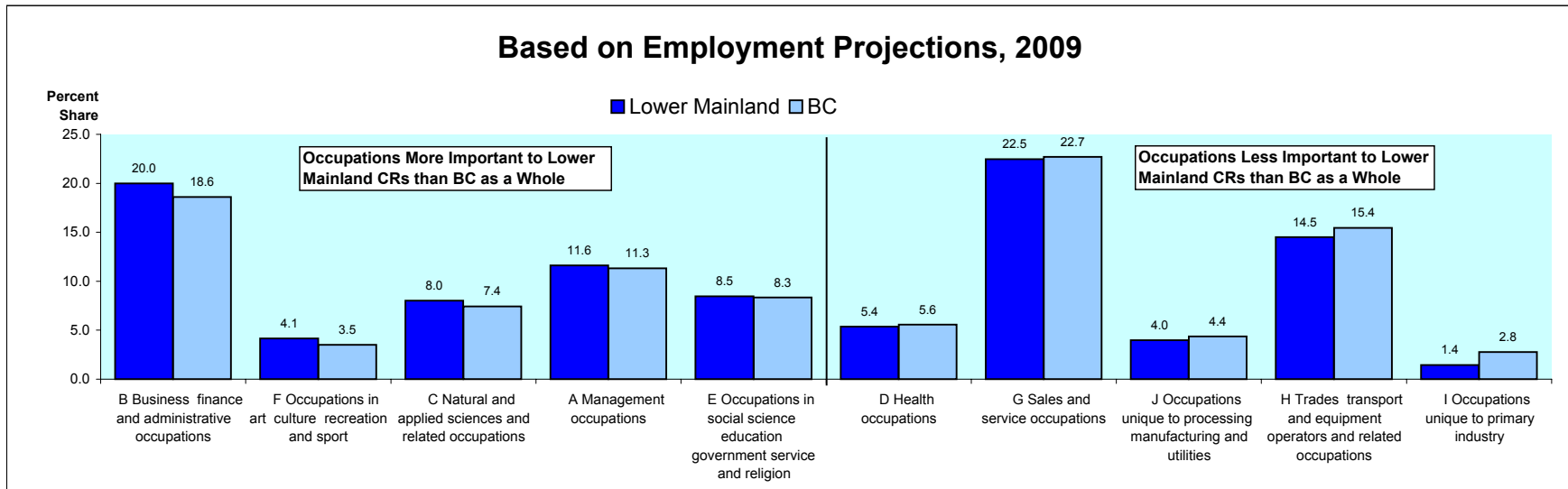
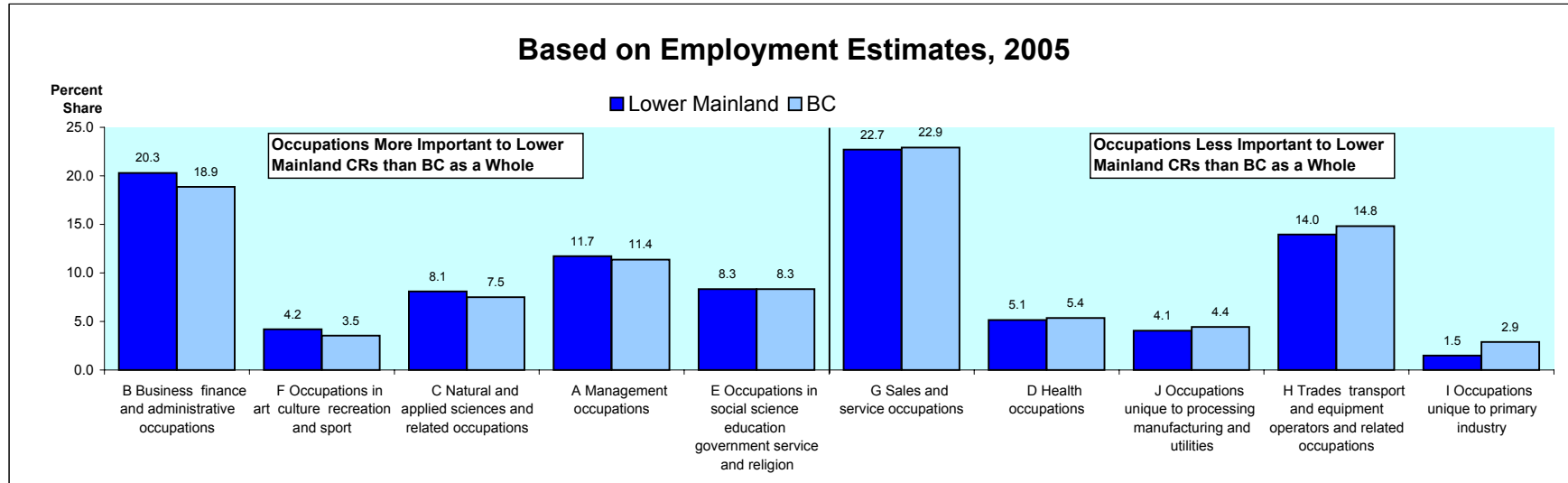
\* Includes College Regions of Vancouver, Kwantlen, Douglas and Capilano.

Produced by: **BC STATS**

# Occupational Structure in the Lower Mainland Region Compared with BC

## Percent Share of Employment by Occupation

Ranked by the Percentage Point Difference in the Occupation Share in the College Region Compared with BC





## *College Regions in the Lower Mainland\**

	Estimated Employment	Average Annual % Change			Avg Annual % Chg Over 4 Years
	<u>2005</u>	<u>2007/2005</u>	<u>2009/2007</u>	<u>2010/2009</u>	<u>2009/2005</u>
<b>All occupations</b>	1,182,258	2.1	1.9	3.8	2.0
<b>A Management occupations</b>	138,491	2.0	1.6	4.0	1.8
<b>B Business finance and administrative occupations</b>	239,976	2.0	1.2	4.1	1.6
<b>C Natural and applied sciences and related occupations</b>	95,873	2.1	1.4	4.4	1.7
<b>D Health occupations</b>	60,740	3.4	3.1	4.9	3.3
<b>E Occupations in social science education government service and religion</b>	98,591	2.5	2.2	3.7	2.4
<b>F Occupations in art culture recreation and sport</b>	49,607	1.9	1.5	3.1	1.7
<b>G Sales and service occupations</b>	268,334	2.0	1.4	5.0	1.8
<b>H Trades transport and equipment operators and related occupations</b>	165,192	2.3	3.7	0.6	3.1
<b>I Occupations unique to primary industry</b>	17,570	1.4	0.9	3.3	1.2
<b>J Occupations unique to processing manufacturing and utilities</b>	47,921	1.7	1.3	5.2	1.5

\* Includes College Regions of Vancouver, Kwantlen, Douglas and Capilano.  
Prepared by: **BC STATS**

## **Projected Annual Growth Rates in Occupational Demand (2-digits)**

## *College Regions of the Lower Mainland\**

### **Projected Annual Growth Rates in Occupational Demand**

	Estimated Employment	Average Annual % Change			Avg Annual % Chg Over 4 Years
	<u>2005</u>	<u>2007/2005</u>	<u>2009/2007</u>	<u>2010/2009</u>	<u>2009/2005</u>
All occupations	1,182,258	2.1	1.9	3.8	2.0
A2 Managers in retail trade food and accommodation services	17,126	1.9	1.4	3.9	1.7
A3 Other managers n.e.c.	33,768	1.8	1.0	4.3	1.4
B0 Professional occupations in business and finance	43,799	1.9	1.2	5.8	1.6
B1 Finance and insurance administration occupations	43,798	2.1	2.4	2.0	2.3
B2 Secretaries	44,993	2.0	0.7	4.7	1.4
B3 Administrative and regulatory occupations	23,826	2.0	1.1	4.2	1.6
B4 Clerical supervisors	28,122	2.3	1.9	3.9	2.2
B5 Clerical occupations	22,692	2.0	1.7	3.7	1.9
C0 Professional occupations in natural and applied sciences	4,994	1.8	0.9	4.0	1.4
C1 Technical occupations related to natural and applied sciences	115,345	2.0	1.2	4.0	1.6
D0 Professional occupations in health	56,696	2.1	1.2	4.8	1.7
D1 Nurse supervisors and registered nurses	39,201	2.0	1.6	3.8	1.8
D2 Technical and related occupations in health	14,206	3.3	2.9	5.0	3.2
D3 Assisting occupations in support of health services	15,678	3.6	3.4	4.7	3.6
E0 Judges, lawyers, psychologists, social workers, ministers of religion & policy/program officers	15,814	3.1	2.8	5.0	3.1
E1 Teachers and professors	15,014	3.4	3.1	4.9	3.4
E2 Paralegals, social services workers & occup. in educ. & religion n.e.c.	30,242	2.4	1.6	4.7	2.1
F0 Professional occupations in art and culture	42,975	2.3	2.4	2.6	2.4
F1 Technical occupations in art, culture, recreation and sport	25,356	3.0	2.6	4.4	2.9
G0 Sales and service supervisors	20,739	2.0	1.5	2.5	1.8
G1 Wholesale, technical, insurance, real estate sales specialists & retail, wholesale and grain buyers	28,842	1.9	1.4	3.6	1.7
G2 Retail salespersons and sales clerks	7,635	2.0	1.5	5.3	1.8
G3 Cashiers	28,212	1.5	0.2	4.6	0.9
G4 Chefs and cooks	46,861	2.0	0.8	6.2	1.4
G5 Occupations in food and beverage service	20,461	2.0	0.9	6.1	1.5

\* Includes College Regions of Vancouver, Kwantlen, Douglas and Capilano.

Produced by: **BC STATS**

## *College Regions of the Lower Mainland\**

### **Projected Annual Growth Rates in Occupational Demand**

	Estimated Employment	Average Annual % Change			Avg Annual % Chg Over 4 Years
	<u>2005</u>	<u>2007/2005</u>	<u>2009/2007</u>	<u>2010/2009</u>	<u>2009/2005</u>
G6 Occupations in protective services	18,296	1.9	2.1	4.9	2.0
G7 Occup. in travel & accommodation incl. attendants in recreation & sport	23,413	1.8	2.0	5.0	1.9
G8 Childcare and home support workers	9,477	1.4	1.3	2.1	1.4
G9 Sales and service occupations n.e.c.	12,901	2.0	1.9	2.8	2.0
H0 Contractors and supervisors in trades and transportation	22,171	2.9	2.7	4.3	2.9
H1 Construction trades	78,869	2.2	1.7	5.1	2.0
H2 Stationary engineers, power stn operators & electrical trades & telecom.	9,291	2.3	4.9	-1.3	3.7
H3 Machinists, metal forming, shaping and erecting occupations	34,657	2.7	6.6	-3.9	4.8
H4 Mechanics	12,597	2.3	3.9	-1.0	3.2
H5 Other trades n.e.c.	12,459	1.4	2.5	4.4	2.0
H6 Heavy equipment and crane operators including drillers	23,495	2.1	1.9	4.1	2.0
H7 Transport equipment operators & related workers, excl. labourers	10,237	1.7	2.2	4.3	2.0
H8 Trades helpers, construction and transport labourers & related	6,539	2.5	5.6	-3.1	4.2
I0 Occupations unique to agriculture, excluding labourers	33,989	2.4	2.2	2.8	2.4
I1 Occup. unique to forestry ops, mining, oil & gas extraction, fishing excl. labourers	21,918	2.2	3.3	0.5	2.9
I2 Primary production labourers	10,157	1.1	0.6	4.0	0.9
J0 Supervisors in manufacturing	2,564	2.0	1.1	2.2	1.6
J1 Machine operators in manufacturing	4,877	1.7	1.5	2.3	1.6
J2 Assemblers in manufacturing	3,736	2.1	1.3	4.9	1.7
J3 Labourers in processing, manufacturing and utilities	19,727	1.8	1.3	5.1	1.6

\* Includes College Regions of Vancouver, Kwantlen, Douglas and Capilano.

Produced by: **BC STATS**

## Appendix 1

### **Summary of Methodology for the British Columbia Regional Employment Projection Model (REPM)**

The methodology used in the model has come largely from previous work on community dependencies carried out earlier by BC STATS. The fundamental premise is that the economy of a region can be represented by income flows that can be classified as “basic” (or driver) and “non-basic” (or support) depending on the source of the income.

The model calculates indirect employment effects from employment changes in the basic sectors using multipliers based in inter-industry linkages from the British Columbia Input-Output Model. Similarly, non-basic, or induced effects are calculated using an income-to-non-basic-jobs ratio.

The current version of the model is benchmarked to the 2001 Census employment by Regional District, and is projected forward up to the most up-to-date annual employment data from the Labour Force Survey. The growth rates from the Labour Force Survey (LFS) at the provincial level for the basic industries are used to project growth down to the Regional District level. The model then calculates the indirect jobs based on the Regional District specific multipliers. The direct and indirect employment levels are then used to calculate the wages and salaries earned in the basic industries which in turn are converted to employment in the non-basic industries through the income to support-industry job multipliers. As well, transfer payments and investment income are also converted to employment in the non-basic industries using the same multipliers. The output from the model is then benchmarked to the LFS industry numbers at the BC level as well as to the LFS regional employment numbers for the Development Regions and the Capital and Greater Vancouver Regional Districts. In the current version of the model, the employment numbers are reconciled up to the 2005 annual averages from the LFS.

Once the model is brought up to the most current employment levels, then the forecast is carried out for five to ten years further. The industrial employment projections from the Canadian Occupational Projection System (COPS) are now used as the source data for the industrial growth, both in determining the growth rates in the direct employment and then as a benchmark on which to reconcile the industrial employment generated by the model.

While the total employment is forced to the COPS employment levels, there is leeway to adjust growth rates by industry across the sub-provincial regions. There are some standard variables that are used to differentiate the outlook for

the regions. For example, the growth in the education sector is dictated by the projected K-12 and post-secondary population growth in the relevant age groups. Government Services is projected in line with the total population projections for the Regional Districts. Employment in the Health Sector is so often governed by the growth in the senior's population as are the transfer payments flowing in. (CPP and OAS is a large component of transfer payments). As well, pensions from private pension plans are considered investment income meaning seniors receive a high proportion of the total investment income in a region.

An important determining factor of growth by region is the major projects coming on stream in the outlook timeframe. Firstly they impact construction employment and secondly many will impact specific industries once they move into the production phase. In BC, we are dealing with the preparations for the 2010 Winter Games so many of the construction occupations will be in short supply.

The intent is to update the REPM annually, based on another year of LFS data plus a new COPS forecast. Currently, there is a demand for economic forecasts by occupation at the college region level. College Regions are aggregations of sub-sets of Regional Districts. Occupational forecasts are being produced at the college region level. In the appendix there is a conversion table which outlines which Regional District belongs to which College Region.

The model is only as good as the input data assumptions. Our reliance on good quality data from COPS is very important. Users of the data who perceive any problems with the assumptions in the model or question the quality of any of the data series being used should contact BC STATS at [bcstats@gov.bc.ca](mailto:bcstats@gov.bc.ca).

May 2, 2006

## Appendix 2

### COPS INDUSTRY CONVERSION TO REPM

REPM INDUSTRY	COPS INDUSTRY	% of COPS INDUSTRY
ACC&FD	31 Accommodation and food services	100
AGRIC	1 Agriculture	100
BEVMFG	9 Food and Beverage Products	16
BUS_HI	25 Computer System Design Services	100
BUS_HI	24 Professional Business Services	50
BUS_HI	26 Other Professional Services	50
BUS_LO	27 Management, Administrative and Other Support	100
BUS_LO	24 Professional Business Services	50
BUS_LO	26 Other Professional Services	50
COMMUNICA	30 Information, culture and recreation	100
CONSTRUCT	8 Construction	100
EDUCATION	28 Educational Services	100
FIRE	23 Finance, Insurance, Real Estate and Leasing	100
FISHING	3 Fishing, Hunting and Trapping	100
FISHMFG	9 Food and Beverage Products	18
FOODMFG	9 Food and Beverage Products	66
FORESTLOG	2 Forestry and Logging with support activities	100
GOVT	33 Public administration	100
HEALTH	29 Health Care and Social Assistance	75
MINING	5 Mining (except Oil and Gas)	100
MINING	6 Support Activities for Mining and Oil and Gas Extraction	67
MINMFG	14 Manufactured Mineral Products	50
OTHMFG	12 Printing and Related Support Activities	100
OTHMFG	13 Rubber, Plastics and Chemicals	100
OTHMFG	14 Manufactured Mineral Products	50
OTHMFG	15 Metal Fabrication and Machinery (excluding electrical)	100
OTHMFG	16 Computer, Electronic and Electrical Products	100
OTHMFG	17 Motor Vehicle, Body, Trailer & Parts Manufacturing	100
OTHMFG	18 Other Transportation Equipment Manufacturing	100
OTHSERV	29 Health Care and Social Assistance	25
OTHSERV	32 Other services	100

## COPS INDUSTRY CONVERSION TO REPM

REPM INDUSTRY	COPS INDUSTRY	% of COPS INDUSTRY
PAPERPULP	11 Paper Manufacturing	100
PETROL	4 Oil and Gas Extraction	100
PETROL	6 Support Activities for Mining and Oil and Gas Extraction	33
PETROLMFG	19 Other Manufacturing	7
RETAIL	21 Retail Trade	100
TRANOTHER	22 Transportation and Warehousing	59
TRANRAIL	22 Transportation and Warehousing	5
TRANTRUCK	22 Transportation and Warehousing	31
TRANWATER	22 Transportation and Warehousing	5
UTILITIES	7 Utilities	100
WDOTHER	10 Wood Product Manufacturing	29
WDSAWMILLS	10 Wood Product Manufacturing	71
WHOLESALE	20 Wholesale Trade	100



## Appendix 3

### REGIONAL DISTRICT TO COLLEGE REGION CONVERSION FOR REPM

COLLEGE REGION	REGIONAL DISTRICT #	REGIONAL DISTRICT NAME	% of REGIONAL DISTRICT
CAMOSUN	17	Capital	100
FRASER VALLEY	9	Fraser Valley	100
LOWER MAINLAND	15	Greater Vancouver	100
LOWER MAINLAND	29	Sunshine Coast	100
LOWER MAINLAND	31	Squamish Lillooet	87
MALASPINA	19	Cowichan Valley	100
MALASPINA	21	Nanaimo	100
MALASPINA	27	Powell River	100
NEW CALEDONIA	41	Cariboo	37
NEW CALEDONIA	51	Bulkley Nechako	61
NEW CALEDONIA	53	Fraser-Fort George	100
NORTH ISLAND	23	Alberni-Clayoquot	100
NORTH ISLAND	25	Comox Strathcona	100
NORTH ISLAND	43	Mount Waddington	100
NORTH ISLAND	45	Central Coast	100
NORTHERN LIGHTS	49	Kitimat Stikine	2
NORTHERN LIGHTS	55	Peace River	100
NORTHERN LIGHTS	57	Stikine	100
NORTHERN LIGHTS	59	Northern Rockies	100
NORTHWEST	47	Skeena-Queen Charlotte	100
NORTHWEST	49	Kitimat Stikine	98
NORTHWEST	51	Bulkley Nechako	39
OKANAGAN	7	Okanagan-Similkameen	100
OKANAGAN	35	Central Okanagan	100
OKANAGAN	37	North Okanagan	100
OKANAGAN	39	Columbia Shushwap	85
ROCKIES	1	East Kootenay	100
ROCKIES	3	Central Kootenays	20
ROCKIES	39	Columbia Shushwap	15
SELKIRK	3	Central Kootenays	80
SELKIRK	5	Kootenay Boundary	100
THOMPSON RIVERS	31	Squamish Lillooet	13
THOMPSON RIVERS	33	Thompson Nicola	100
THOMPSON RIVERS	41	Cariboo	63

## **Appendix 4**

### **Projected Annual Growth Rates in Occupational Demand (3-digit)**

## *College Regions of the Lower Mainland\**

### **Projected Annual Growth Rates in Occupational Demand**

	Estimated Employment	Average Annual % Change			Avg Annual % Chg Over 4 Years
	<u>2005</u>	<u>2007/2005</u>	<u>2009/2007</u>	<u>2010/2009</u>	<u>2009/2005</u>
<b>All occupations</b>	1,182,258	2.1	1.9	3.8	2.0
A01.001 Legislators and Senior Management	17,122	1.9	1.4	3.9	1.7
A11.011 Administrative Services Managers	10,508	1.9	1.1	4.2	1.5
A12.021 Managers in Engineering, Architecture, Science & Information Systems	5,945	2.0	1.2	4.6	1.6
A13.061 Sales, Marketing and Advertising Managers	12,990	1.7	0.7	4.6	1.2
A14.072 Facility Operation and Maintenance Managers	4,293	1.9	1.3	3.5	1.6
A21.062 Managers in Retail Trade	29,157	2.0	0.8	6.2	1.4
A22.063 Managers in Food Service and Accommodation	14,663	1.8	2.0	5.1	1.9
A30.012 Managers in Financial and Business Services	12,447	1.7	0.0	4.6	0.8
A31.013 Managers in Communication (Except Broadcasting)	1,355	1.9	1.5	2.1	1.8
A32.031 Managers in Health, Education, Social and Community Services	5,945	2.7	2.6	3.4	2.7
A33.041 Managers in Public Administration	747	1.6	1.4	2.4	1.5
A34.051 Managers in Art, Culture, Recreation and Sport	2,125	1.9	1.5	2.1	1.7
A35.064 Managers in Protective Service	830	1.1	1.2	1.3	1.2
A36.065 Managers in Other Services	1,927	2.2	1.8	4.1	2.0
A37.071 Managers in Construction and Transportation	11,459	2.8	6.1	-3.5	4.6
A38.081 Managers in Primary Production (Except Agriculture)	559	1.7	1.0	2.5	1.4
A39.091 Managers in Manufacturing and Utilities	6,411	1.5	1.2	6.2	1.4
B01.111 Auditors, Accountants and Investment Professionals	37,079	1.9	0.6	4.7	1.3
B02.112 Human Resources and Business Service Professionals	7,908	2.1	1.2	4.8	1.7
B11.123 Finance and Insurance Administrative Occupations	23,809	2.0	1.1	4.2	1.6
B21.124 Secretaries, Records and Transcriptionists	28,107	2.3	1.9	3.9	2.1
B31.122 Administrative and Regulatory Occupations	22,672	2.0	1.7	3.7	1.9
B41.121 Clerical Supervisors	5,010	1.8	0.9	4.0	1.4
B51.141 Clerical Occupations, General Office Skills	35,244	2.2	1.7	3.9	2.0
B52.142 Office Equipment Operators	4,992	1.8	1.1	3.6	1.5
B53.143 Finance and Insurance Clerks	32,848	1.8	0.5	4.4	1.1
B54.144 Administrative Support Clerks	6,607	2.1	1.6	3.7	1.8
B55.145 Library Correspondence and Related Information Clerks	14,120	1.8	1.0	3.5	1.5

*\*Includes College Regions of Vancouver, Kwantlen, Douglas and Capilano.*

## *College Regions of the Lower Mainland\**

### **Projected Annual Growth Rates in Occupational Demand**

	Estimated Employment	Average Annual % Change			Avg Annual % Chg Over 4 Years
	<u>2005</u>	<u>2007/2005</u>	<u>2009/2007</u>	<u>2010/2009</u>	<u>2009/2005</u>
B56.146 Mail and Message Distribution Occupations	8,091	2.2	1.8	3.0	2.1
B57.147 Recording, Scheduling and Distributing Occupations	13,471	1.9	1.1	4.5	1.5
C01.211 Physical Science Professionals	2,285	2.3	1.2	4.7	1.8
C02.212 Life Science Professionals	3,725	2.0	1.2	4.4	1.6
C03.213 Civil, Mechanical, Electrical and Chemical Engineers	10,517	2.1	1.5	4.7	1.8
C04.214 Other Engineers	5,649	2.2	1.2	5.1	1.7
C05.215 Architects, Urban Planners and Land Surveyors	4,841	2.2	1.5	4.5	1.9
C06.216 Mathematicians, Statisticians and Actuaries	363	2.2	1.3	4.5	1.8
C07.217 Computer and Information Systems Professionals	29,289	2.1	1.1	4.9	1.6
C11.221 Technical Occupations in Physical Sciences	1,408	2.2	1.3	4.0	1.7
C12.222 Technical Occupations in Life Sciences	3,932	1.8	1.2	3.5	1.5
C13.223 Technical Occupations in Civil, Mechanical & Industrial Engineering	3,901	2.1	3.2	1.8	2.7
C14.224 Technical Occupations in Electronics and Electrical Engineering	7,751	1.9	1.5	4.3	1.7
C15.225 Technical Occupations in Architecture, Drafting, Surveying & Mapping	6,596	2.1	1.3	4.9	1.7
C16.226 Other Technical Inspectors and Regulatory Officers	2,426	2.1	1.8	3.1	2.0
C17.227 Transportation Officers and Controllers	3,995	2.0	2.1	2.5	2.1
C18.228 Technical Occupations in Computer and Information Systems	9,133	2.1	1.1	4.4	1.6
D01.311 Physicians Dentists and Veterinarians	7,469	3.4	3.1	4.8	3.4
D02.312 Optometrists, Chiropractors & Other Health Diagnosing/Treating Profs.	918	3.6	3.3	4.8	3.5
D03.313 Pharmacists, Dietitians and Nutritionists	2,582	2.6	1.6	6.0	2.2
D04.314 Therapy and Assessment Professionals	3,232	3.5	3.3	4.6	3.5
D11.315 Nurse Supervisors and Registered Nurses	15,693	3.6	3.4	4.7	3.6
D21.321 Medical Technologists and Technicians (Except Dental Health)	6,519	3.1	2.7	5.0	3.0
D22.322 Technical Occupations in Dental Health Care	2,087	2.6	2.7	6.0	2.7
D23.323 Other Technical Occupations in Health Care (Except Dental)	7,198	3.3	3.0	4.8	3.2
D31.341 Assisting Occupations in Support of Health Services	15,036	3.4	3.1	4.9	3.4
E01.411 Judges, Lawyers and Quebec Notaries	9,891	2.2	1.1	5.3	1.6
E02.415 Psychologists, Social Workers, Counsellors, Clergy & Probation Officers	8,986	2.9	2.6	4.5	2.8
E03 Policy and program officers researchers and consultants	11,412	2.2	1.4	4.3	1.8
E11.412 University Professors and Assistants	5,764	2.3	2.4	2.7	2.4

*\*Includes College Regions of Vancouver, Kwantlen, Douglas and Capilano.*

## *College Regions of the Lower Mainland\**

### **Projected Annual Growth Rates in Occupational Demand**

	Estimated Employment	Average Annual % Change			Avg Annual % Chg Over 4 Years
	<u>2005</u>	<u>2007/2005</u>	<u>2009/2007</u>	<u>2010/2009</u>	<u>2009/2005</u>
E12.413 College and Other Vocational Instructors	6,996	2.3	2.3	2.8	2.3
E13.414 Secondary and Elementary School Teachers & Educational Counsellors	30,229	2.3	2.4	2.6	2.4
E21.421 Paralegals, Social Services Workers & Occupations in Education & Religion n.e.c.	25,349	3.0	2.6	4.4	2.9
F01 Librarians, archivists, conservators and curators	1,493	1.9	1.5	1.9	1.7
F02.512 Writing, Translating and Public Relations Professionals	8,515	2.0	1.3	3.2	1.7
F03.513 Creative and Performing Artists	10,751	2.0	1.7	2.0	1.9
F11.521 Technical Occupations in Libraries, Archives Museums & Art Galleries	1,883	1.9	1.7	1.8	1.8
F12.522 Photographers, Graphic Arts Technicians & Technical & coordinating Occupations in Motion Pictures Broadcasting & Performing	6,676	1.9	1.4	3.0	1.7
F13.523 Announcers and Other Performers	1,396	1.9	1.5	2.0	1.7
F14.524 Creative Designers and Craftspersons	12,014	1.8	1.2	5.3	1.5
F15.525 Athletes, Coaches, Referees and Related Occupations	6,888	2.0	1.7	2.2	1.9
G01.621 Sales and Service Supervisors	7,674	2.0	1.5	5.3	1.8
G11.641 Sales Representatives, Wholesale Trade	13,600	1.4	0.2	4.5	0.8
G12.622 Technical Sales Specialists, Wholesale Trade	4,801	1.3	0.6	4.7	1.0
G13.623 Insurance and Real Estate Sales Occupations and Buyers	9,817	1.7	0.0	4.7	0.8
G21.642 Retail Salespersons and Sales Clerks	46,869	2.0	0.8	6.2	1.4
G31.661 Cashiers	20,487	2.0	0.9	6.1	1.5
G41.624 Chefs and Cooks	18,304	1.9	2.1	4.9	2.0
G51.645 Occupations in Food and Beverage Service	23,407	1.8	2.0	5.0	1.9
G61.626 Police Officers and Fire-fighters	4,070	1.2	1.3	1.3	1.2
G62.646 Other Occupations in Protective Service	3,756	1.4	1.3	2.3	1.4
G63.665 Security Guards and Related Occupations	1,647	2.0	1.7	3.6	1.9
G71.643 Occupations in Travel and Accommodation	7,616	2.1	2.2	3.3	2.2
G72.644 Tour and Recreational Guides and Casino Occupations	2,994	1.9	1.5	1.9	1.8
G73.667 Other Occupations in Travel Accommodation, Amusement & Recreation	2,289	1.9	1.7	2.3	1.8
G81.647 Childcare and Home Support Workers	22,137	2.9	2.7	4.3	2.9
G91.627 Technical Occupations in Personal Service	6,294	2.5	1.8	5.7	2.2
G92.648 Other Occupations in Personal Service	3,505	2.4	1.6	5.6	2.0

*\*Includes College Regions of Vancouver, Kwantlen, Douglas and Capilano.*

## *College Regions of the Lower Mainland\**

### **Projected Annual Growth Rates in Occupational Demand**

	Estimated Employment	Average Annual % Change			Avg Annual % Chg Over 4 Years
	<u>2005</u>	<u>2007/2005</u>	<u>2009/2007</u>	<u>2010/2009</u>	<u>2009/2005</u>
G93.666 Cleaners	18,828	2.3	2.2	4.1	2.3
G94.625 Butchers and Bakers	6,072	2.6	1.1	4.7	1.9
G96.664 Food Counter Attendants, Kitchen Helpers & Related Occupations	23,280	2.0	2.1	4.9	2.1
G97.662 Other Sales and Related Occupations	17,335	2.0	0.7	6.5	1.4
G98.668 Other Elemental Service Occupations	3,561	2.4	1.9	4.9	2.2
H01.721 Contractors and Supervisors, Trades and Related Workers	8,571	2.4	5.1	-1.6	3.8
H02.722 Supervisors, Railway and Motor Transportation Occupations	676	2.2	2.2	2.4	2.2
H11.725 Plumbers, Pipefitters and Gas Fitters	5,005	2.8	6.3	-3.9	4.7
H12.727 Carpenters and Cabinetmakers	15,170	2.5	6.3	-3.2	4.5
H13.728 Masonry and Plastering Trades	5,236	2.9	7.5	-5.3	5.4
H14.729 Other Construction Trades	9,254	2.8	6.9	-4.3	5.0
H21.724 Electrical Trades and Telecommunications Occupations	11,669	2.3	4.1	-1.3	3.3
H22.735 Stationary Engineers and Power Station and System Operators	916	2.1	1.5	3.0	1.8
H31.723 Machinists and Related Occupations	2,994	0.9	1.3	7.5	1.1
H32.726 Metal Forming, Shaping and Erecting Trades	9,476	1.5	2.9	3.4	2.3
H41.731 Machinery & Transportation Equipment Mechanics (Except Motor Vehicle)	10,023	1.9	2.4	2.3	2.2
H42.732 Automotive service technicians	11,515	2.3	1.5	5.6	1.9
H43.733 Other Mechanics	1,937	2.3	1.7	4.9	2.0
H51.734 Upholsterers, Tailors, Shoe Repairers, Jewellers & Related Occupations	2,927	1.5	1.3	7.1	1.5
H52.738 Printing Press Operators, Commercial Divers & Other Trades & Related Occupations n.e.c.	2,496	1.1	1.4	6.0	1.3
H53.744 Other installers repairers and servicers	4,828	2.1	3.0	1.9	2.6
H61.742 Heavy Equipment Operators	5,426	2.5	5.6	-3.2	4.2
H62.737 Crane Operators Drillers and Blasters	1,097	2.4	5.2	-2.7	3.9
H71.741 Motor Vehicle and Transit Drivers	30,014	2.5	2.2	2.8	2.4
H72.736 Train Crew Operating Occupations	943	1.6	2.2	2.2	1.9
H73.743 Other Transport Equipment Operators and Related Workers	3,021	1.8	2.1	2.4	2.0
H81.745 Longshore Workers and Material Handlers	12,167	1.9	1.2	4.0	1.6
H82.761 Trades Helpers and Labourers	8,535	2.7	6.5	-3.9	4.8

*\*Includes College Regions of Vancouver, Kwantlen, Douglas and Capilano.*

## *College Regions of the Lower Mainland\**

### **Projected Annual Growth Rates in Occupational Demand**

	Estimated Employment	Average Annual % Change			Avg Annual % Chg Over 4 Years
	<u>2005</u>	<u>2007/2005</u>	<u>2009/2007</u>	<u>2010/2009</u>	<u>2009/2005</u>
H83.762 Public Works and Other Labourers n.e.c.	1,223	2.0	2.6	0.8	2.4
I01.825 Contractors, Operators & Supervisors in Agriculture, Horticulture & Aquaculture	5,749	1.1	0.7	3.8	0.9
I02.843 Agriculture and Horticulture Workers	4,432	1.0	0.4	4.3	0.7
I11.821 Supervisors, Logging and Forestry	331	1.4	0.7	2.4	1.1
I12.822 Supervisors, Mining Oil and Gas	203	1.6	1.5	1.3	1.6
I13.823 Underground Miners, Oil and Gas Drillers and Related Workers	213	3.8	1.1	1.1	2.5
I14.841 Mine Service Workers and Operators in Oil and Gas Drilling	194	4.9	2.2	0.2	3.7
I15.824 Logging Machinery Operators	413	1.5	1.2	0.6	1.4
I16.842 Logging and Forestry Workers	674	1.6	0.6	0.7	1.1
I17.826 Fishing Vessel Masters and Skippers and Fishermen/women	392	1.6	1.4	6.9	1.5
I18.844 Other Fishing and Trapping Occupations	108	1.5	1.5	6.6	1.5
I21.861 Primary Production Labourers	4,871	1.7	1.5	2.3	1.6
J01.921 Supervisors, Processing Occupations	2,234	3.0	1.2	3.3	2.1
J02.922 Supervisors, Assembly and Fabrication	1,468	0.8	1.3	7.4	1.1
J11.923 Central Control & Process Operators in Manufacturing & Processing	772	8.4	1.0	1.0	4.8
J12.941 Machine Operators & Related Workers in Metal & Mineral Products Processing	1,831	0.9	1.6	5.4	1.3
J13.942 Machine Operators & Related Workers in Chemical, Plastic & Rubber Processing	613	1.4	0.9	3.8	1.2
J14.943 Machine Operators & Related Workers in Pulp & Paper Production & Wood Processing	3,229	0.8	1.0	4.2	0.9
J15.944 Machine Operators and Related Workers in Textile Processing	415	1.1	1.0	7.5	1.0
J16.945 Machine Operators and Related Workers in Fabric, Fur & Leather Products Manufacturing	3,637	0.8	1.2	8.3	1.0
J17.946 Machine Operators & Related Workers in Food, Beverage & Tobacco Processing	3,936	3.8	1.6	1.5	2.8
J18.947 Printing Machine Operators and Related Occupations	3,088	1.4	1.3	6.7	1.4
J19.951 Machining, Metalworking, Woodworking & Related Machine Operators	2,149	0.8	1.2	6.9	1.0
J21.948 Mechanical Electrical and Electronics Assemblers	3,779	0.9	1.3	7.6	1.1

*\*Includes College Regions of Vancouver, Kwantlen, Douglas and Capilano.*

Prepared by: **BC STATS**

## *College Regions of the Lower Mainland\**

### **Projected Annual Growth Rates in Occupational Demand**

	Estimated Employment	Average Annual % Change			Avg Annual % Chg Over 4 Years
	<u>2005</u>	<u>2007/2005</u>	<u>2009/2007</u>	<u>2010/2009</u>	<u>2009/2005</u>
J22.949 Other Assembly and Related Occupations	6,434	1.1	1.6	6.6	1.3
J31.961 Labourers in Processing Manufacturing and Utilities	14,271	2.0	1.1	4.1	1.6

*\*Includes College Regions of Vancouver, Kwantlen, Douglas and Capilano.*

Prepared by: **BC STATS**



## **Appendix 5**

### **Projected Annual Growth Rates in Occupational Demand (4-digit)**

## *College Regions of the Lower Mainland\**

### **Projected Annual Growth Rates in Occupational Demand**

	Estimated Employment	Average Annual % Change			Avg Annual % Chg Over 4 Years
	<u>2005</u>	<u>2007/2005</u>	<u>2009/2007</u>	<u>2010/2009</u>	<u>2009/2005</u>
<b>All occupations</b>	1,182,258	2.1	1.9	3.8	2.0
<b>A Management occupations</b>	138,491	2.0	1.6	4.0	1.8
<b>A0 Senior management occupations</b>	17,126	1.9	1.4	3.9	1.7
<b>A01.001 Legislators and Senior Management</b>	17,122	1.9	1.4	3.9	1.7
<b>A011.0011 Legislators</b>	396	1.4	1.5	1.5	1.4
<b>A012.0012 Senior Government Managers and Officials</b>	1,121	1.3	1.4	1.7	1.3
<b>A013.0013 Senior Managers - Financial, Communications and Other     Business Services</b>	6,518	2.1	0.7	5.0	1.4
<b>A014.0014 Senior Managers - Health, Education, Social and Community     Services and Membership Organizations</b>	1,541	2.9	2.6	4.7	2.8
<b>A015.0015 Senior Managers - Trade, Broadcasting and Other Services     n.e.c.</b>	3,901	1.5	0.4	4.6	0.9
<b>A016.0016 Senior Managers - Goods Production, Utilities,     Transportation and Construction</b>	3,646	2.0	3.3	1.7	2.7
<b>A1 Specialist managers</b>	33,768	1.8	1.0	4.3	1.4
<b>A11.011 Administrative Services Managers</b>	10,508	1.9	1.1	4.2	1.5
<b>A111.0111 Financial Managers</b>	5,545	1.8	0.9	4.2	1.4
<b>A112.0112 Human Resources Managers</b>	1,859	2.2	1.3	4.2	1.8
<b>A113.0113 Purchasing Managers</b>	548	1.5	1.1	4.8	1.3
<b>A114.0114 Other Administrative Services Managers</b>	2,549	2.0	1.4	4.0	1.8
<b>A12.021 Managers in Engineering, Architecture, Science and Information Systems</b>	5,945	2.0	1.2	4.6	1.6
<b>A121.0211 Engineering Managers</b>	1,500	1.8	1.5	4.8	1.7
<b>A122.0213 Computer and Information Systems Managers</b>	3,859	2.0	1.1	4.5	1.5
<b>A123.0212 Architecture and Science Managers</b>	567	2.2	1.3	4.9	1.8
<b>A13.061 Sales, Marketing and Advertising Managers</b>	12,990	1.7	0.7	4.6	1.2
<b>A131.0611 Sales, Marketing and Advertising Managers</b>	12,988	1.7	0.7	4.6	1.2
<b>A14.072 Facility Operation and Maintenance Managers</b>	4,293	1.9	1.3	3.5	1.6
<b>A141.0721 Facility Operation and Maintenance Managers</b>	4,315	1.9	1.3	3.5	1.7

## *College Regions of the Lower Mainland\**

### **Projected Annual Growth Rates in Occupational Demand**

	Estimated Employment	Average Annual % Change			Avg Annual % Chg Over 4 Years
	<u>2005</u>	<u>2007/2005</u>	<u>2009/2007</u>	<u>2010/2009</u>	<u>2009/2005</u>
<b>A2 Managers in retail trade, food and accommodation services</b>	43,799	1.9	1.2	5.8	1.6
<b>A21.062 Managers in Retail Trade</b>	29,157	2.0	0.8	6.2	1.4
<b>A211.0621 Retail Trade Managers</b>	29,149	2.0	0.8	6.2	1.4
<b>A22.063 Managers in Food Service and Accommodation</b>	14,663	1.8	2.0	5.1	1.9
<b>A221.0631 Restaurant and Food Service Managers</b>	10,902	1.8	2.0	5.1	1.9
<b>A222.0632 Accommodation Service Managers</b>	3,754	1.8	2.0	5.0	1.9
<b>A3 Other managers n.e.c.</b>	43,798	2.1	2.4	2.0	2.3
<b>A30.012 Managers in Financial and Business Services</b>	12,447	1.7	0.0	4.6	0.8
<b>A301.0121 Insurance, Real Estate and Financial Brokerage Managers</b>	3,066	1.7	0.1	4.2	0.9
<b>A302.0122 Banking, Credit and Other Investment Managers</b>	8,449	1.6	-0.2	4.8	0.7
<b>A303.0123 Other Business Services Managers</b>	941	2.1	1.2	4.8	1.7
<b>A31.013 Managers in Communication (Except Broadcasting)</b>	1,355	1.9	1.5	2.1	1.8
<b>A311.0131 Telecommunication Carriers Managers</b>	1,199	1.9	1.5	2.0	1.7
<b>A312.0132 Postal and Courier Services Managers</b>	156	2.3	2.2	2.6	2.3
<b>A32.031 Managers in Health, Education, Social and Community Services</b>	5,945	2.7	2.6	3.4	2.7
<b>A321.0311 Managers in Health Care</b>	1,609	3.4	3.2	4.6	3.4
<b>A322.0312 Administrators - Post-Secondary Education and Vocational Training</b>	1,251	2.3	2.4	2.6	2.4
<b>A323.0313 School Principals and Administrators of Elementary and Secondary Education</b>	2,185	2.3	2.4	2.6	2.4
<b>A324.0314 Managers in Social, Community and Correctional Services</b>	891	2.8	2.5	4.4	2.7
<b>A33.041 Managers in Public Administration</b>	747	1.6	1.4	2.4	1.5
<b>A331.0411 Government Managers - Health and Social Policy Development and Program Administration</b>	280	1.9	1.7	2.8	1.9
<b>A332.0412 Government Managers - Economic Analysis, Policy Development and Program Administration</b>	278	1.4	1.1	2.4	1.2
<b>A333.0413 Government Managers - Education Policy Development and Program Administration</b>	53	1.7	1.4	3.6	1.6
<b>A334.0414 Other Managers in Public Administration</b>	144	1.2	1.3	1.4	1.3
<b>A34.051 Managers in Art, Culture, Recreation and Sport</b>	2,125	1.9	1.5	2.1	1.7

## *College Regions of the Lower Mainland\**

### **Projected Annual Growth Rates in Occupational Demand**

	Estimated Employment	Average Annual % Change			Avg Annual % Chg Over 4 Years
	<u>2005</u>	<u>2007/2005</u>	<u>2009/2007</u>	<u>2010/2009</u>	<u>2009/2005</u>
A341.0511 Library, Archive, Museum and Art Gallery Managers	344	1.9	1.6	2.0	1.8
A342.0512 Managers - Publishing, Motion Pictures, Broadcasting and Performing Arts	953	1.8	1.4	2.2	1.7
A343.0513 Recreation and Sports Program and Service Directors	832	1.9	1.6	2.1	1.8
A35.064 Managers in Protective Service	830	1.1	1.2	1.3	1.2
A351.0641 Commissioned Police Officers	143	1.1	1.2	1.3	1.2
A352.0642 Fire Chiefs and Senior Fire-fighting Officers	135	1.1	1.2	1.4	1.2
A353.0643 Commissioned Officers, Armed Forces	549	1.1	1.2	1.3	1.2
A36.065 Managers in Other Services	1,927	2.2	1.8	4.1	2.0
A361 0651 Other Services Managers	1,917	2.2	1.8	4.1	2.0
A37.071 Managers in Construction and Transportation	11,459	2.8	6.1	-3.5	4.6
A371.0711 Construction Managers	6,299	2.9	7.1	-4.9	5.2
A372.0712 Residential Home Builders and Renovators	2,614	3.0	7.6	-5.6	5.5
A373.0713 Transportation Managers	2,544	2.5	2.2	2.7	2.4
A38.081 Managers in Primary Production (Except Agriculture)	559	1.7	1.0	2.5	1.4
A381.0811 Primary Production Managers (Except Agriculture)	577	1.6	1.0	2.6	1.3
A39.091 Managers in Manufacturing and Utilities	6,411	1.5	1.2	6.2	1.4
A391.0911 Manufacturing Managers	5,851	1.5	1.2	6.6	1.4
A392.0912 Utilities Managers	553	2.4	0.8	1.8	1.6
<b>B Business, finance and administrative occupations</b>	239,976	2.0	1.2	4.1	1.6
<b>B0 Professional occupations in business and finance</b>	44,993	2.0	0.7	4.7	1.4
<b>B01.111 Auditors, Accountants and Investment Professionals</b>	37,079	1.9	0.6	4.7	1.3
<b>B011.1111 Financial Auditors and Accountants</b>	20,394	2.1	1.2	4.8	1.7
<b>B012.1112 Financial and Investment Analysts</b>	3,117	1.9	0.2	4.4	1.1
<b>B013.1113 Securities Agents, Investment Dealers and Brokers</b>	4,599	1.7	-0.2	4.7	0.7
<b>B014.1114 Other Financial Officers</b>	8,979	1.7	-0.1	4.7	0.8
<b>B02.112 Human Resources and Business Service Professionals</b>	7,908	2.1	1.2	4.8	1.7
<b>B021.1121 Specialists in Human Resources</b>	2,501	2.2	1.3	4.3	1.8
<b>B022.1122 Professional Occupations in Business Services to Management</b>	5,389	2.1	1.1	5.0	1.6

## *College Regions of the Lower Mainland\**

### **Projected Annual Growth Rates in Occupational Demand**

	Estimated Employment	Average Annual % Change			Avg Annual % Chg Over 4 Years
	<u>2005</u>	<u>2007/2005</u>	<u>2009/2007</u>	<u>2010/2009</u>	<u>2009/2005</u>
<b>B1 Finance and insurance administration occupations</b>	23,826	2.0	1.1	4.2	1.6
<b>B11.123 Finance and Insurance Administrative Occupations</b>	23,809	2.0	1.1	4.2	1.6
B111.1231 Bookkeepers	14,461	2.2	1.8	4.1	2.0
B112.1232 Loan Officers	2,931	1.7	-0.2	4.7	0.7
B113.1233 Insurance Adjusters and Claims Examiners	4,394	1.7	-0.2	4.7	0.7
B114.1234 Insurance Underwriters	1,122	1.7	-0.2	4.7	0.7
B115.1235 Assessors, Valuers and Appraisers	493	1.5	0.8	3.0	1.2
B116.1236 Customs, Ship and Other Brokers	449	2.1	1.7	3.4	2.0
<b>B2 Secretaries</b>	28,122	2.3	1.9	3.9	2.2
<b>B21.124 Secretaries, Records and Transcriptionists</b>	28,107	2.3	1.9	3.9	2.1
B211.1241 Secretaries (Except Legal and Medical)	17,780	2.2	2.0	3.2	2.1
B212.1242 Legal Secretaries	7,229	2.2	1.1	5.4	1.6
B213.1243 Medical Secretaries	2,738	3.5	3.3	4.7	3.5
B214.1244 Court Recorders and Medical Transcriptionists	362	3.1	2.8	4.4	3.1
<b>B3 Administrative and regulatory occupations</b>	22,692	2.0	1.7	3.7	1.9
<b>B31.122 Administrative and Regulatory Occupations</b>	22,672	2.0	1.7	3.7	1.9
B311.1221 Administrative Officers	15,007	2.1	1.7	3.9	2.0
B312.1222 Executive Assistants	2,047	2.0	1.4	3.8	1.7
B313.1223 Personnel and Recruitment Officers	719	2.1	1.6	3.8	1.9
B314.1224 Property Administrators	880	2.2	2.4	2.0	2.4
B315.1225 Purchasing Agents and Officers	1,786	1.6	1.4	4.6	1.5
B316.1226 Conference and Event Planners	1,008	2.0	1.5	3.7	1.8
B317.1227 Court Officers and Justices of the Peace	176	1.1	1.2	1.3	1.2
B318.1228 Immigration, Employment Insurance and Revenue Officers	1,016	1.1	1.2	1.3	1.2
<b>B4 Clerical supervisors</b>	4,994	1.8	0.9	4.0	1.4
<b>B41.121 Clerical Supervisors</b>	5,010	1.8	0.9	4.0	1.4
B411.1211 Supervisors, General Office & Administrative Support Clerks	1,106	1.9	1.4	3.6	1.7
B412.1212 Supervisors, Finance and Insurance Clerks	1,787	1.7	0.3	4.5	1.0
B413.1213 Supervisors, Library Correspondence and Related Information	637	1.7	1.0	3.3	1.4
B414.1214 Supervisors, Mail and Message Distribution Occupations	435	2.3	2.1	2.4	2.3

## College Regions of the Lower Mainland\*

### Projected Annual Growth Rates in Occupational Demand

	Estimated Employment	Average Annual % Change			Avg Annual % Chg Over 4 Years
	<u>2005</u>	<u>2007/2005</u>	<u>2009/2007</u>	<u>2010/2009</u>	<u>2009/2005</u>
B415.1215 Supervisors, Recording, Distributing and Scheduling Occupations	1,017	1.7	1.0	4.5	1.4
B5 Clerical occupations	115,345	2.0	1.2	4.0	1.6
B51.141 Clerical Occupations, General Office Skills	35,244	2.2	1.7	3.9	2.0
B511.1411 General Office Clerks	22,334	2.1	1.5	3.6	1.8
B513.1413 Records Management and Filing Clerks	1,593	2.3	1.8	3.9	2.1
B514.1414 Receptionists and Switchboard Operators	11,326	2.5	1.9	4.5	2.2
B52.142 Office Equipment Operators	4,992	1.8	1.1	3.6	1.5
B522.1422 Data Entry Clerks	3,672	1.8	1.0	3.9	1.4
B523.1423 Desktop Publishing Operators and Related Occupations	579	1.5	1.3	4.3	1.4
B524.1424 Telephone Operators	741	1.8	1.4	2.0	1.6
B53.143 Finance and Insurance Clerks	32,848	1.8	0.5	4.4	1.1
B531.1431 Accounting and Related Clerks	11,544	2.0	1.3	4.1	1.7
B532.1432 Payroll Clerks	2,357	2.1	1.7	3.6	1.9
B533.1433 Customer Service Representatives - Financial Services	13,682	1.6	-0.3	4.7	0.7
B534.1434 Banking, Insurance and Other Financial Clerks	4,247	1.7	-0.2	4.7	0.7
B535.1435 Collectors	1,036	2.2	0.5	3.7	1.4
B54.144 Administrative Support Clerks	6,607	2.1	1.6	3.7	1.8
B541.1441 Administrative Clerks	5,707	2.2	1.5	3.8	1.9
B542.1442 Personnel Clerks	645	2.2	1.8	3.7	2.0
B543.1443 Court Clerks	263	1.2	1.2	1.7	1.2
B55.145 Library, Correspondence and Related Information Clerks	14,120	1.8	1.0	3.5	1.5
B551.1451 Library Clerks	1,140	1.9	1.5	1.6	1.8
B552.1452 Correspondence, Publication and Related Clerks	433	1.9	1.3	2.9	1.6
B553.1453 Customer Service, Information and Related Clerks	10,697	1.9	1.0	3.9	1.4
B554.1454 Survey Interviewers and Statistical Clerks	1,861	1.5	1.2	2.6	1.4
B56.146 Mail and Message Distribution Occupations	8,091	2.2	1.8	3.0	2.1
B561.1461 Mail, Postal and Related Clerks	3,081	2.2	1.9	2.8	2.1
B562.1462 Letter Carriers	2,827	2.4	2.3	2.4	2.4
B563.1463 Couriers, Messengers and Door-to-Door Distributors	2,188	2.0	1.2	4.1	1.6

## *College Regions of the Lower Mainland\**

### **Projected Annual Growth Rates in Occupational Demand**

	Estimated Employment	Average Annual % Change			Avg Annual % Chg Over 4 Years
	<u>2005</u>	<u>2007/2005</u>	<u>2009/2007</u>	<u>2010/2009</u>	<u>2009/2005</u>
B57.147 Recording, Scheduling and Distributing Occupations	13,471	1.9	1.1	4.5	1.5
B571.1471 Shippers and Receivers	6,813	1.8	0.8	4.8	1.3
B572.1472 Storekeepers and Parts Clerks	1,779	1.8	0.7	5.4	1.2
B573.1473 Production Clerks	677	2.4	1.3	4.8	1.9
B574.1474 Purchasing and Inventory Clerks	2,066	2.1	1.0	4.8	1.6
B575.1475 Dispatchers and Radio Operators	1,918	2.2	2.1	2.2	2.2
B576.1476 Transportation Route and Crew	212	2.2	1.7	3.3	2.0
<b>C Natural and applied sciences and related occupations</b>	95,873	2.1	1.4	4.4	1.7
<b>C0 Professional occupations in natural and applied sciences</b>	56,696	2.1	1.2	4.8	1.7
<b>C01.211 Physical Science Professionals</b>	2,285	2.3	1.2	4.7	1.8
C011.2111 Physicists and Astronomers	276	2.1	1.4	5.2	1.8
C012.2112 Chemists	928	2.7	1.3	4.8	2.0
C013.2113 Geologists, Geochemists and Geophysicists	872	2.1	1.1	4.5	1.6
C014.2114 Meteorologists	119	2.0	1.1	4.7	1.6
C015.2115 Other Professional Occupations in Physical Sciences	113	1.9	1.3	4.7	1.6
<b>C02.212 Life Science Professionals</b>	3,725	2.0	1.2	4.4	1.6
C021.2121 Biologists and Related Scientists	1,922	2.2	1.3	4.5	1.8
C022.2122 Forestry Professionals	1,534	1.9	1.0	4.3	1.5
C023.2123 Agricultural Representatives, Consultants and Specialists	257	1.9	1.1	4.2	1.5
<b>C03.213 Civil, Mechanical, Electrical and Chemical Engineers</b>	10,517	2.1	1.5	4.7	1.8
C031.2131 Civil Engineers	4,919	2.2	1.7	4.0	2.0
C032.2132 Mechanical Engineers	2,410	2.0	1.3	5.3	1.7
C033.2133 Electrical and Electronics Engineers	2,643	1.7	1.2	5.5	1.5
C034.2134 Chemical Engineers	544	4.3	1.0	4.5	2.7
<b>C04.214 Other Engineers</b>	5,649	2.2	1.2	5.1	1.7
C041.2141 Industrial and Manufacturing Engineers	579	1.3	1.4	5.8	1.4
C042.2142 Metallurgical and Materials Engineers	140	1.8	0.9	4.2	1.3
C043.2143 Mining Engineers	521	2.3	1.6	4.6	2.0
C044.2144 Geological Engineers	542	2.2	1.2	5.1	1.7
C045.2145 Petroleum Engineers	126	16.0	0.9	1.5	8.6

## *College Regions of the Lower Mainland\**

### **Projected Annual Growth Rates in Occupational Demand**

	Estimated Employment	Average Annual % Change			Avg Annual % Chg Over 4 Years
	<u>2005</u>	<u>2007/2005</u>	<u>2009/2007</u>	<u>2010/2009</u>	<u>2009/2005</u>
C046.2146 Aerospace Engineers	130	1.7	1.4	5.3	1.6
C047.2147 Computer Engineers (Except Software Engineers)	2,630	1.8	1.1	5.1	1.5
C048.2148 Other Professional Engineers n.e.c.	1,042	1.9	1.4	5.2	1.7
C05.215 Architects, Urban Planners and Land Surveyors	4,841	2.2	1.5	4.5	1.9
C051.2151 Architects	2,796	2.2	1.3	5.2	1.8
C052.2152 Landscape Architects	243	2.2	1.3	5.0	1.8
C053.2153 Urban and Land Use Planners	634	2.0	2.7	1.2	2.4
C054.2154 Land Surveyors	1,143	2.2	1.4	4.7	1.9
C06.216 Mathematicians, Statisticians and Actuaries	363	2.2	1.3	4.5	1.8
C061.2161 Mathematicians, Statisticians and Actuaries	382	2.2	1.2	4.7	1.7
C07.217 Computer and Information Systems Professionals	29,289	2.1	1.1	4.9	1.6
C071.2171 Information Systems Analysts and Consultants	8,924	2.1	1.0	4.8	1.6
C072.2172 Database Analysts and Data Administrators	1,243	2.0	1.2	4.3	1.6
C073.2173 Software Engineers	4,256	2.0	1.1	5.0	1.6
C074.2174 Computer Programmers and Interactive Media Developers	10,775	2.1	1.0	4.9	1.6
C075.2175 Web Designers and Developers	4,102	2.1	1.1	5.1	1.7
C1 Technical occupations related to natural and applied sciences	39,201	2.0	1.6	3.8	1.8
C11.221 Technical Occupations in Physical Sciences	1,408	2.2	1.3	4.0	1.7
C111.2211 Chemical Technologists and Technicians	889	2.3	1.2	4.1	1.8
C112.2212 Geological and Mineral Technologists and Technicians	448	2.0	1.2	3.9	1.7
C113.2213 Meteorological Technicians	90	2.0	1.4	3.8	1.7
C12.222 Technical Occupations in Life Sciences	3,932	1.8	1.2	3.5	1.5
C121.2221 Biological Technologists and Technicians	1,133	2.0	1.2	4.6	1.6
C122.2222 Agricultural and Fish Products Inspectors	248	1.9	1.3	2.4	1.6
C123.2223 Forestry Technologists and Technicians	1,518	1.8	1.0	3.7	1.4
C124.2224 Conservation and Fishery Officers	423	1.3	1.3	1.6	1.3
C125.2225 Landscape and Horticultural Technicians and Specialists	601	1.9	1.6	2.7	1.8
C13.223 Technical Occupations in Civil, Mechanical and Industrial Engineering	3,901	2.1	3.2	1.8	2.7
C131.2231 Civil Engineering Technologists and Technicians	1,037	2.2	2.0	3.4	2.1



## *College Regions of the Lower Mainland\**

### **Projected Annual Growth Rates in Occupational Demand**

	Estimated Employment	Average Annual % Change			Avg Annual % Chg Over 4 Years
	<u>2005</u>	<u>2007/2005</u>	<u>2009/2007</u>	<u>2010/2009</u>	<u>2009/2005</u>
C132.2232 Mechanical Engineering Technologists and Technicians	905	2.4	1.7	4.8	2.1
C133.2233 Industrial Engineering and Manufacturing Technologists and Technicians	598	1.5	1.4	6.0	1.5
C134.2234 Construction Estimators	1,358	2.6	5.9	-3.0	4.4
C14.224 Technical Occupations in Electronics & Electrical Engineering	7,751	1.9	1.5	4.3	1.7
C141.2241 Electrical and Electronics Engineering Technologists and Technicians	2,858	1.6	1.3	5.2	1.4
C142.2242 Electronic Service Technicians (Household and Business Equipment)	3,920	1.9	1.5	4.1	1.8
C143.2243 Industrial Instrument Technicians and Mechanics	444	3.7	1.7	2.7	2.7
C144.2244 Aircraft Instrument Electrical and Avionics Mechanics, Technicians and Inspectors	565	2.0	2.0	3.1	2.0
C15.225 Technical Occupations in Architecture, Drafting, Surveying and Mapping	6,596	2.1	1.3	4.9	1.7
C151.2251 Architectural Technologists and Technicians	781	2.2	1.4	4.9	1.8
C152.2252 Industrial Designers	630	1.8	1.4	5.7	1.6
C153.2253 Drafting Technologists and Technicians	3,733	2.1	1.4	5.0	1.8
C154.2254 Land Survey Technologists and Technicians	348	2.2	1.6	4.2	1.9
C155.2255 Mapping and Related Technologists and Technicians	1,156	2.0	1.1	4.6	1.6
C16.226 Other Technical Inspectors and Regulatory Officers	2,426	2.1	1.8	3.1	2.0
C161.2261 Nondestructive Testers and Inspectors	279	1.9	1.1	5.4	1.5
C162.2262 Engineering Inspectors and Regulatory Officers	388	2.0	1.4	3.9	1.7
C163.2263 Inspectors in Public and Environmental Health and Occupational Health and Safety	921	2.1	1.7	3.1	2.0
C164.2264 Construction Inspectors	830	2.1	2.4	2.0	2.3
C17.227 Transportation Officers and Controllers	3,995	2.0	2.1	2.5	2.1
C171.2271 Air Pilots, Flight Engineers and Flying Instructors	2,006	2.3	2.2	2.5	2.3
C172.2272 Air Traffic Control and Related Occupations	588	2.3	2.1	2.5	2.3
C173.2273 Deck Officers, Water Transport	839	1.6	1.9	2.5	1.7
C174.2274 Engineer Officers, Water Transport	363	1.3	1.8	2.7	1.6

## College Regions of the Lower Mainland\*

### Projected Annual Growth Rates in Occupational Demand

	Estimated Employment	Average Annual % Change			Avg Annual % Chg Over 4 Years
	<u>2005</u>	<u>2007/2005</u>	<u>2009/2007</u>	<u>2010/2009</u>	<u>2009/2005</u>
C175.2275 Railway Traffic Controllers and Marine Traffic Regulators	177	1.5	1.8	2.3	1.7
C18.228 Technical Occupations in Computer and Information Systems	9,133	2.1	1.1	4.4	1.6
C181.2281 Computer and Network Operators and Web Technicians	4,714	2.2	1.1	4.4	1.6
C182.2282 User Support Technicians	3,521	2.1	1.1	4.3	1.6
C183.2283 Systems Testing Technicians	880	1.9	1.1	4.5	1.5
<b>D Health occupations</b>	<b>60,740</b>	<b>3.4</b>	<b>3.1</b>	<b>4.9</b>	<b>3.3</b>
<b>D0 Professional occupations in health</b>	<b>14,206</b>	<b>3.3</b>	<b>2.9</b>	<b>5.0</b>	<b>3.2</b>
<b>D01.311 Physicians Dentists and Veterinarians</b>	<b>7,469</b>	<b>3.4</b>	<b>3.1</b>	<b>4.8</b>	<b>3.4</b>
D011.3111 Specialist Physicians	1,537	3.6	3.4	4.7	3.6
D012.3112 General Practitioners and Family Physicians	3,279	3.6	3.4	4.7	3.6
D013.3113 Dentists	1,638	3.6	3.4	4.7	3.6
D014.3114 Veterinarians	1,006	2.2	1.1	5.5	1.7
<b>D02.312 Optometrists, Chiropractors and Other Health Diagnosing and   Treating Professionals</b>	<b>918</b>	<b>3.6</b>	<b>3.3</b>	<b>4.8</b>	<b>3.5</b>
D021.3121 Optometrists	237	3.5	3.2	4.9	3.5
D022.3122 Chiropractors	464	3.6	3.4	4.7	3.6
<b>D023.3123 Other Professional Occupations in Health Diagnosing and   Treating</b>	<b>221</b>	<b>3.5</b>	<b>3.1</b>	<b>4.9</b>	<b>3.4</b>
<b>D03.313 Pharmacists, Dietitians and Nutritionists</b>	<b>2,582</b>	<b>2.6</b>	<b>1.6</b>	<b>6.0</b>	<b>2.2</b>
D031.3131 Pharmacists	1,964	2.3	1.2	6.4	1.8
D032.3132 Dietitians and Nutritionists	610	3.4	3.0	4.8	3.3
<b>D04.314 Therapy and Assessment Professionals</b>	<b>3,232</b>	<b>3.5</b>	<b>3.3</b>	<b>4.6</b>	<b>3.5</b>
D041.3141 Audiologists and Speech-Language Pathologists	495	3.3	3.1	4.1	3.3
D042.3142 Physiotherapists	1,422	3.6	3.4	4.7	3.6
D043.3143 Occupational Therapists	762	3.6	3.4	4.7	3.6
D044.3144 Other Professional Occupations in Therapy and Assessment	555	3.4	3.1	4.6	3.3
<b>D1 Nurse supervisors and registered nurses</b>	<b>15,678</b>	<b>3.6</b>	<b>3.4</b>	<b>4.7</b>	<b>3.6</b>
D11.315 Nurse Supervisors and Registered Nurses	15,693	3.6	3.4	4.7	3.6
D111.3151 Head Nurses and Supervisors	526	3.5	3.3	4.7	3.5
D112.3152 Registered Nurses	15,134	3.6	3.4	4.7	3.6

## *College Regions of the Lower Mainland\**

### **Projected Annual Growth Rates in Occupational Demand**

	Estimated Employment	Average Annual % Change			Avg Annual % Chg Over 4 Years
	<u>2005</u>	<u>2007/2005</u>	<u>2009/2007</u>	<u>2010/2009</u>	<u>2009/2005</u>
<b>D2 Technical and related occupations in health</b>	15,814	3.1	2.8	5.0	3.1
<b>D21.321 Medical Technologists and Technicians (Except Dental Health)</b>	6,519	3.1	2.7	5.0	3.0
<b>D211.3211 Medical Laboratory Technologists and Pathologists'     Assistants</b>	1,821	3.4	3.1	4.8	3.3
<b>D212.3212 Medical Laboratory Technicians</b>	1,396	3.4	3.1	4.8	3.4
<b>D213.3213 Veterinary and Animal Health Technologists and Technicians</b>	1,342	2.3	1.1	5.5	1.7
<b>D214.3214 Respiratory Therapists, Clinical Perfusionists and Cardio-     Pulmonary Technologists</b>	403	3.5	3.2	4.7	3.4
<b>D215.3215 Medical Radiation Technologists</b>	935	3.5	3.3	4.7	3.5
<b>D216.3216 Medical Sonographers</b>	216	3.6	3.4	4.7	3.6
<b>D217.3217 Cardiology Technologists</b>	128	3.6	3.4	4.6	3.6
<b>D218.3218 Electroencephalographic and Other Diagnostic Technologists     n.e.c.</b>	75	3.5	3.3	4.6	3.5
<b>D219.3219 Other Medical Technologists and Technicians (Except Dental     Health)</b>	221	2.0	2.2	6.8	2.1
<b>D22.322 Technical Occupations in Dental Health Care</b>	2,087	2.6	2.7	6.0	2.7
<b>D221.3221 Denturists</b>	168	2.2	2.5	6.4	2.4
<b>D222.3222 Dental Hygienists and Dental Therapists</b>	1,036	3.6	3.4	4.7	3.6
<b>D223.3223 Dental Technologists, Technicians and Laboratory Bench     Workers</b>	870	1.4	1.8	7.6	1.6
<b>D23.323 Other Technical Occupations in Health Care (Except Dental)</b>	7,198	3.3	3.0	4.8	3.2
<b>D231.3231 Opticians</b>	706	2.3	1.1	6.5	1.7
<b>D232.3232 Midwives and Practitioners of Natural Healing</b>	623	3.3	3.0	5.0	3.3
<b>D233.3233 Licensed Practical Nurses</b>	3,192	3.6	3.4	4.7	3.6
<b>D234.3234 Ambulance Attendants and Other Paramedical Occupations</b>	1,445	3.0	3.1	3.7	3.1
<b>D235.3235 Other Technical Occupations in Therapy and Assessment</b>	1,247	3.2	2.8	5.1	3.1
<b>D3 Assisting occupations in support of health services</b>	15,014	3.4	3.1	4.9	3.4
<b>D31.341 Assisting Occupations in Support of Health Services</b>	15,036	3.4	3.1	4.9	3.4
<b>D311.3411 Dental Assistants</b>	2,545	3.6	3.4	4.7	3.6
<b>D312.3413 Nurse Aides, Orderlies and Patient Service Associates</b>	9,129	3.6	3.4	4.7	3.6

## *College Regions of the Lower Mainland\**

### **Projected Annual Growth Rates in Occupational Demand**

	Estimated Employment	Average Annual % Change			Avg Annual % Chg Over 4 Years
	<u>2005</u>	<u>2007/2005</u>	<u>2009/2007</u>	<u>2010/2009</u>	<u>2009/2005</u>
D313.3414 Other Assisting Occupations in Support of Health Services	3,322	2.9	2.2	5.6	2.6
E Occupations in social science, education, government service & religion	98,591	2.5	2.2	3.7	2.4
E0 Judges, lawyers, psychologists, social workers, ministers of religion and policy and program officers	30,242	2.4	1.6	4.7	2.1
E01.411 Judges, Lawyers and Quebec Notaries	9,891	2.2	1.1	5.3	1.6
E011.4111 Judges	102	1.1	1.2	1.3	1.2
E012.4112 Lawyers and Quebec Notaries	9,779	2.2	1.1	5.4	1.6
E02.415 Psychologists, Social Workers, Counsellors, Clergy and Probation Officers	8,986	2.9	2.6	4.5	2.8
E021.4151 Psychologists	971	3.2	3.1	4.1	3.2
E022.4152 Social Workers	2,665	2.9	2.8	3.9	2.9
E023.4153 Family, Marriage and Other Related Counsellors	2,695	3.2	2.9	4.7	3.2
E024.4154 Ministers of Religion	2,308	2.5	1.9	5.6	2.3
E025.4155 Probation and Parole Officers and Related Occupations	354	1.4	1.5	1.8	1.5
E03 Policy and program officers, researchers and consultants	11,412	2.2	1.4	4.3	1.8
E031.4161 Natural and Applied Science Policy Researchers, Consultants and Program Officers	1,526	2.1	1.1	4.8	1.6
E032.4162 Economists and Economic Policy Researchers and Analysts	497	1.8	1.0	4.0	1.4
E033.4163 Business Development Officers and Marketing Researchers and Consultants	3,746	2.2	1.0	4.9	1.6
E034.4164 Social Policy Researchers, Consultants & Program Officers	1,638	2.1	1.5	4.1	1.8
E035.4166 Education Policy Researchers Consultants & Program Officers	922	2.2	2.1	3.2	2.2
E036.4167 Recreation, Sports and Fitness Program Supervisors and Consultants	1,160	2.4	2.1	3.3	2.3
E037.4168 Program Officers Unique to Government	300	1.1	1.2	1.3	1.2
E038.4169 Other Professional Occupations in Social Science	389	2.2	1.3	4.5	1.8
E039.4165 Health Policy Researchers, Consultants & Program Officers	1,176	2.6	2.1	4.7	2.4
E1 Teachers and professors	42,975	2.3	2.4	2.6	2.4
E11.412 University Professors and Assistants	5,764	2.3	2.4	2.7	2.4

## *College Regions of the Lower Mainland\**

### **Projected Annual Growth Rates in Occupational Demand**

	Estimated Employment	Average Annual % Change			Avg Annual % Chg Over 4 Years
	<u>2005</u>	<u>2007/2005</u>	<u>2009/2007</u>	<u>2010/2009</u>	<u>2009/2005</u>
E111.4121 University Professors	2,856	2.3	2.5	2.6	2.4
E112.4122 Post-Secondary Teaching and Research Assistants	2,899	2.3	2.3	2.8	2.4
E12.413 College and Other Vocational Instructors	6,996	2.3	2.3	2.8	2.3
E121.4131 College and Other Vocational Instructors	6,992	2.3	2.3	2.8	2.3
E13.414 Secondary and Elementary School Teachers and Educational Counsellors	30,229	2.3	2.4	2.6	2.4
E131.4141 Secondary School Teachers	11,975	2.3	2.4	2.6	2.4
E132.4142 Elementary School and Kindergarten Teachers	16,662	2.3	2.4	2.6	2.4
E133.4143 Educational Counsellors	1,598	2.3	2.4	2.7	2.4
E2 Paralegals, social services workers and occupations in education and religion n.e.c.	25,356	3.0	2.6	4.4	2.9
E21.421 Paralegals, Social Services Workers and Occupations in Education and Religion n.e.c.	25,349	3.0	2.6	4.4	2.9
E211.4211 Paralegal and Related Occupations	3,903	2.2	1.1	5.3	1.6
E212.4212 Community and Social Service Workers	6,619	3.1	2.9	4.3	3.1
E213.4213 Employment Counsellors	1,068	2.7	2.3	4.2	2.5
E214.4215 Instructors and Teachers of Persons with Disabilities	706	2.7	2.7	3.3	2.8
E215.4216 Other Instructors	2,972	2.3	2.2	2.8	2.3
E216.4217 Other Religious Occupations	494	2.5	1.9	5.5	2.3
E217.4214 Early Childhood Educators and Assistants	9,602	3.5	3.3	4.6	3.5
F Occupations in art, culture, recreation and sport	49,607	1.9	1.5	3.1	1.7
F0 Professional Occupations in Art and Culture	20,739	2.0	1.5	2.5	1.8
F01 Librarians, archivists, conservators and curators	1,493	1.9	1.5	1.9	1.7
F011.5111 Librarians	1,111	1.9	1.5	1.7	1.7
F012.5112 Conservators and Curators	237	1.9	1.6	1.9	1.8
F013.5113 Archivists	122	2.0	1.5	2.3	1.8
F02.512 Writing, Translating and Public Relations Professionals	8,515	2.0	1.3	3.2	1.7
F021.5121 Authors and Writers	2,895	1.9	1.3	2.8	1.7
F022.5122 Editors	1,212	1.9	1.4	2.2	1.7
F023.5123 Journalists	978	1.9	1.5	1.6	1.7

## *College Regions of the Lower Mainland\**

### **Projected Annual Growth Rates in Occupational Demand**

	Estimated Employment	Average Annual % Change			Avg Annual % Chg Over 4 Years
	<u>2005</u>	<u>2007/2005</u>	<u>2009/2007</u>	<u>2010/2009</u>	<u>2009/2005</u>
F024.5124 Professional Occupations in Public Relations and Communications	2,384	2.1	1.3	4.2	1.7
F025.5125 Translators, Terminologists and Interpreters	1,053	2.2	1.3	5.1	1.8
F03.513 Creative and Performing Artists	10,751	2.0	1.7	2.0	1.9
F031.5131 Producers, Directors, Choreographers & Related Occupations	2,443	1.9	1.4	1.7	1.7
F032.5132 Conductors, Composers and Arrangers	320	1.9	1.5	2.2	1.7
F033.5133 Musicians and Singers	3,313	2.1	2.0	2.2	2.1
F034.5134 Dancers	682	2.2	2.2	2.4	2.2
F035.5135 Actors and Comedians	1,432	1.9	1.5	1.5	1.7
F036.5136 Painters, Sculptors and Other Visual Artists	2,552	1.9	1.5	2.0	1.7
F1 Technical occupations in art, culture, recreation and sport	28,842	1.9	1.4	3.6	1.7
F11.521 Technical Occupations in Libraries, Archives, Museums and Art Galleries	1,883	1.9	1.7	1.8	1.8
F111.5211 Library and Archive Technicians and Assistants	1,472	1.9	1.6	1.8	1.8
F112.5212 Technical Occupations Related to Museums and Art Galleries	417	2.0	1.8	1.7	1.9
F12.522 Photographers, Graphic Arts Technicians & Technical & coordinating Occupations in Motion Pictures, Broadcasting & Performing Arts	6,676	1.9	1.4	3.0	1.7
F121.5221 Photographers	1,922	2.2	1.1	5.0	1.7
F122.5222 Film and Video Camera Operators	575	1.9	1.4	1.7	1.7
F123.5223 Graphic Arts Technicians	528	1.7	1.4	4.7	1.6
F124.5224 Broadcast Technicians	262	2.0	1.5	1.7	1.8
F125.5225 Audio and Video Recording Technicians	839	1.8	1.4	2.2	1.6
F126.5226 Other Technical and Co-ordinating Occupations in Motion Pictures, Broadcasting and the Performing Arts	1,175	1.9	1.4	1.9	1.7
F127.5227 Support Occupations in Motion Pictures, Broadcasting and the Performing Arts	1,366	1.9	1.5	1.6	1.7
F13.523 Announcers and Other Performers	1,396	1.9	1.5	2.0	1.7
F131.5231 Announcers and Other Broadcasters	1,095	1.8	1.5	1.9	1.7
F132.5232 Other Performers	302	1.9	1.6	2.3	1.8
F14.524 Creative Designers and Craftspersons	12,014	1.8	1.2	5.3	1.5

## College Regions of the Lower Mainland\*

### Projected Annual Growth Rates in Occupational Demand

	Estimated Employment	Average Annual % Change			Avg Annual % Chg Over 4 Years
	<u>2005</u>	<u>2007/2005</u>	<u>2009/2007</u>	<u>2010/2009</u>	<u>2009/2005</u>
F141.5241 Graphic Designers and Illustrators	5,768	2.0	1.2	5.0	1.6
F142.5242 Interior Designers	1,724	2.2	1.4	4.9	1.8
F143.5243 Theatre, Fashion, Exhibit and Other Creative Designers	1,157	1.9	1.2	4.9	1.6
F144.5244 Artisans and Craftspersons	3,227	1.3	1.2	6.0	1.3
F145.5245 Patternmakers - Textile, Leather and Fur Products	165	1.2	1.1	7.7	1.1
F15.525 Athletes, Coaches, Referees and Related Occupations	6,888	2.0	1.7	2.2	1.9
F151.5251 Athletes	311	1.9	1.5	1.4	1.7
F152.5252 Coaches	877	2.1	1.9	2.1	2.0
F153.5253 Sports Officials and Referees	643	2.0	1.5	2.2	1.8
F154.5254 Program Leaders and Instructors in Recreation and Sport	5,037	2.0	1.7	2.2	1.9
<b>G Sales and service occupations</b>	268,334	2.0	1.4	5.0	1.8
<b>G0 Sales and service supervisors</b>	7,635	2.0	1.5	5.3	1.8
<b>G01.621 Sales and Service Supervisors</b>	7,674	2.0	1.5	5.3	1.8
<b>G011.6211 Retail Trade Supervisors</b>	3,549	2.0	0.8	6.3	1.4
<b>G012.6212 Food Service Supervisors</b>	2,582	2.0	2.1	5.0	2.1
<b>G013.6213 Executive Housekeepers</b>	309	2.1	2.3	5.0	2.3
<b>G014.6214 Dry Cleaning and Laundry Supervisors</b>	104	2.5	1.8	5.7	2.2
<b>G015.6215 Cleaning Supervisors</b>	322	2.3	2.2	3.6	2.3
<b>G016.6216 Other Service Supervisors</b>	788	1.9	1.8	2.9	1.9
<b>G1 Wholesale, technical, insurance, real estate sales specialists and retail,</b>					
<b>wholesale and grain buyers</b>	28,212	1.5	0.2	4.6	0.9
<b>G11.641 Sales Representatives, Wholesale Trade</b>	13,600	1.4	0.2	4.5	0.8
<b>G111.6411 Sales Representatives - Wholesale Trade (Non-Technical)</b>	13,619	1.5	0.2	4.5	0.8
<b>G12.622 Technical Sales Specialists, Wholesale Trade</b>	4,801	1.3	0.6	4.7	1.0
<b>G121.6221 Technical Sales Specialists - Wholesale Trade</b>	4,797	1.3	0.6	4.7	1.0
<b>G13.623 Insurance and Real Estate Sales Occupations and Buyers</b>	9,817	1.7	0.0	4.7	0.8
<b>G131.6231 Insurance Agents and Brokers</b>	7,774	1.6	-0.3	4.7	0.7
<b>G132.6232 Real Estate Agents and Salespersons</b>	278	2.2	3.2	0.4	2.8
<b>G133.6233 Retail and Wholesale Buyers</b>	1,663	1.7	0.5	5.6	1.1
<b>G134.6234 Grain Elevator Operators</b>	81	2.5	2.6	1.2	2.6

## College Regions of the Lower Mainland\*

### Projected Annual Growth Rates in Occupational Demand

	Estimated Employment	Average Annual % Change			Avg Annual % Chg Over 4 Years
	<u>2005</u>	<u>2007/2005</u>	<u>2009/2007</u>	<u>2010/2009</u>	<u>2009/2005</u>
<b>G2 Retail salespersons and sales clerks</b>	46,861	2.0	0.8	6.2	1.4
<b>G21.642 Retail Salespersons and Sales Clerks</b>	46,869	2.0	0.8	6.2	1.4
<b>G211.6421 Retail Salespersons and Sales Clerks</b>	46,855	2.0	0.8	6.2	1.4
<b>G3 Cashiers</b>	20,461	2.0	0.9	6.1	1.5
<b>G31.661 Cashiers</b>	20,487	2.0	0.9	6.1	1.5
<b>G311.6611 Cashiers</b>	20,487	2.0	0.9	6.1	1.5
<b>G4 Chefs and cooks</b>	18,296	1.9	2.1	4.9	2.0
<b>G41.624 Chefs and Cooks</b>	18,304	1.9	2.1	4.9	2.0
<b>G411.6241 Chefs</b>	3,447	1.9	2.0	4.9	2.0
<b>G412.6242 Cooks</b>	14,884	1.9	2.1	4.9	2.0
<b>G5 Occupations in food and beverage service</b>	23,413	1.8	2.0	5.0	1.9
<b>G51.645 Occupations in Food and Beverage Service</b>	23,407	1.8	2.0	5.0	1.9
<b>G511.6451 Maîtres d'hôtel and Hosts/Hostesses</b>	2,132	1.8	1.9	5.0	1.9
<b>G512.6452 Bartenders</b>	3,244	1.8	2.0	4.9	1.9
<b>G513.6453 Food and Beverage Servers</b>	18,044	1.8	2.0	5.0	1.9
<b>G6 Occupations in protective services</b>	9,477	1.4	1.3	2.1	1.4
<b>G61.626 Police Officers and Fire-fighters</b>	4,070	1.2	1.3	1.3	1.2
<b>G611.6261 Police Officers (Except Commissioned)</b>	2,677	1.2	1.3	1.3	1.3
<b>G612.6262 Fire-fighters</b>	1,401	1.1	1.2	1.4	1.2
<b>G62.646 Other Occupations in Protective Service</b>	3,756	1.4	1.3	2.3	1.4
<b>G621.6461 Sheriffs and Bailiffs</b>	319	1.7	1.2	3.2	1.5
<b>G622.6462 Correctional Service Officers</b>	1,085	1.2	1.4	1.4	1.3
<b>G623.6463 By-law Enforcement and Other Regulatory Officers n.e.c.</b>	485	1.8	1.3	3.1	1.6
<b>G624.6464 Other Ranks Armed Forces</b>	1,265	1.1	1.2	1.3	1.2
<b>G625.6465 Other Protective Service Occupations</b>	593	1.9	1.1	4.7	1.5
<b>G63.665 Security Guards and Related Occupations</b>	1,647	2.0	1.7	3.6	1.9
<b>G631.6651 Security Guards and Related Occupations</b>	1,632	2.0	1.7	3.6	1.9
<b>G7 Occupations in travel and accommodation including attendants in   recreation and sport</b>	12,901	2.0	1.9	2.8	2.0
<b>G71.643 Occupations in Travel and Accommodation</b>	7,616	2.1	2.2	3.3	2.2



## *College Regions of the Lower Mainland\**

### **Projected Annual Growth Rates in Occupational Demand**

	Estimated Employment	Average Annual % Change			Avg Annual % Chg Over 4 Years
	<u>2005</u>	<u>2007/2005</u>	<u>2009/2007</u>	<u>2010/2009</u>	<u>2009/2005</u>
G711.6431 Travel Counsellors	282	2.2	1.9	3.4	2.1
G712.6432 Purser and Flight Attendants	2,565	2.3	2.2	2.5	2.3
G713.6433 Airline Sales and Service Agents	2,128	2.3	2.2	2.5	2.3
G714.6434 Ticket Agents, Cargo Service Representatives and Related Clerks (Except Airline)	471	1.9	2.1	2.6	2.1
G715.6435 Hotel Front Desk Clerks	2,196	1.8	2.0	5.1	1.9
G72.644 Tour and Recreational Guides and Casino Occupations	2,994	1.9	1.5	1.9	1.8
G721.6441 Tour and Travel Guides	621	2.0	1.8	2.3	1.9
G722.6442 Outdoor Sport and Recreational Guides	734	1.9	1.6	2.5	1.8
G723.6443 Casino Occupations	1,647	1.9	1.5	1.4	1.7
G73.667 Other Occupations in Travel, Accommodation, Amusement and Recreation	2,289	1.9	1.7	2.3	1.8
G731.6671 Operators and Attendants in Amusement, Recreation and Sport	1,595	1.8	1.5	1.7	1.7
G732.6672 Other Attendants in Accommodation and Travel	689	1.9	2.1	3.8	2.1
G8 Childcare and home support workers	22,171	2.9	2.7	4.3	2.9
G81.647 Childcare and Home Support Workers	22,137	2.9	2.7	4.3	2.9
G811.6471 Visiting Homemakers, Housekeepers & Related Occupations	7,766	3.4	3.2	4.7	3.4
G812.6472 Elementary and Secondary School Teacher Assistants	6,917	2.3	2.4	2.6	2.4
G814.6474 Babysitters, Nannies and Parents' Helpers	7,501	2.9	2.4	5.3	2.7
G9 Sales and service occupations n.e.c.	78,869	2.2	1.7	5.1	2.0
G91.627 Technical Occupations in Personal Service	6,294	2.5	1.8	5.7	2.2
G911.6271 Hairstylists and Barbers	6,049	2.5	1.8	5.7	2.2
G912.6272 Funeral Directors and Embalmers	254	2.5	1.8	5.8	2.2
G92.648 Other Occupations in Personal Service	3,505	2.4	1.6	5.6	2.0
G921.6481 Image, Social and Other Personal Consultants	242	2.3	1.3	5.8	1.8
G922.6482 Estheticians, Electrologists and Related Occupations	1,984	2.4	1.6	5.7	2.0
G923.6483 Pet Groomers and Animal Care Workers	1,110	2.3	1.6	5.4	2.0
G924.6484 Other Personal Service Occupations	164	2.4	1.6	5.4	2.0
G93.666 Cleaners	18,828	2.3	2.2	4.1	2.3

## *College Regions of the Lower Mainland\**

### **Projected Annual Growth Rates in Occupational Demand**

	Estimated Employment	Average Annual % Change			Avg Annual % Chg Over 4 Years
	<u>2005</u>	<u>2007/2005</u>	<u>2009/2007</u>	<u>2010/2009</u>	<u>2009/2005</u>
G931.6661 Light Duty Cleaners	7,895	2.3	2.4	4.7	2.4
G932.6662 Specialized Cleaners	1,939	2.3	1.8	4.7	2.1
G933.6663 Janitors, Caretakers and Building Superintendents	8,964	2.3	2.2	3.4	2.3
G94.625 Butchers and Bakers	6,072	2.6	1.1	4.7	1.9
G941.6251 Butchers and Meat Cutters - Retail and Wholesale	1,958	2.0	0.7	6.6	1.4
G942.6252 Bakers	4,114	2.9	1.3	3.9	2.1
G96.664 Food Counter Attendants, Kitchen Helpers and Related Occupations	23,280	2.0	2.1	4.9	2.1
G961.6641 Food Counter Attendants, Kitchen Helpers and Related Occupations	23,261	2.0	2.1	4.9	2.1
G97.662 Other Sales and Related Occupations	17,335	2.0	0.7	6.5	1.4
G971.6621 Service Station Attendants	2,628	2.0	0.7	6.7	1.4
G972.6622 Grocery Clerks and Store Shelf Stockers	10,275	2.0	0.7	6.8	1.4
G973.6623 Other Elemental Sales Occupations	4,399	2.0	0.9	5.7	1.5
G98.668 Other Elemental Service Occupations	3,561	2.4	1.9	4.9	2.2
G981.6681 Dry Cleaning and Laundry Occupations	1,584	2.7	2.3	5.2	2.5
G982.6682 Ironing, Pressing and Finishing Occupations	384	2.0	1.7	6.4	1.9
G983.6683 Other Elemental Service Occupations	1,595	2.1	1.6	4.2	1.9
H Trades, transport and equipment operators and related occupations	165,192	2.3	3.7	0.6	3.1
H0 Contractors and supervisors in trades and transportation	9,291	2.3	4.9	-1.3	3.7
H01.721 Contractors and Supervisors, Trades and Related Workers	8,571	2.4	5.1	-1.6	3.8
H011.7211 Supervisors, Machinists and Related Occupations	315	1.0	1.3	6.9	1.2
H012.7212 Contractors and Supervisors, Electrical Trades and Telecommunications Occupations	845	2.5	5.3	-2.8	4.0
H013.7213 Contractors and Supervisors, Pipefitting Trades	407	2.8	6.1	-3.7	4.6
H014.7214 Contractors and Supervisors, Metal Forming, Shaping and Erecting Trades	557	1.7	3.4	1.9	2.6
H015.7215 Contractors and Supervisors, Carpentry Trades	1,208	2.7	6.7	-4.1	4.9
H016.7216 Contractors and Supervisors, Mechanic Trades	1,097	2.0	2.1	3.8	2.0

## College Regions of the Lower Mainland\*

### Projected Annual Growth Rates in Occupational Demand

	Estimated Employment	Average Annual % Change			Avg Annual % Chg Over 4 Years
	<u>2005</u>	<u>2007/2005</u>	<u>2009/2007</u>	<u>2010/2009</u>	<u>2009/2005</u>
H017.7217 Contractors and Supervisors, Heavy Construction Equipment Crews	2,033	2.6	5.6	-2.9	4.3
H018.7218 Supervisors, Printing and Related Occupations	512	1.0	1.2	7.3	1.1
H019.7219 Contractors and Supervisors, Other Construction Trades, Installers, Repairers and Servicers	1,616	2.8	7.2	-5.0	5.2
H02.722 Supervisors, Railway and Motor Transportation Occupations	676	2.2	2.2	2.4	2.2
H021.7221 Supervisors, Railway Transport Operations	226	1.6	2.1	2.4	1.9
H022.7222 Supervisors, Motor Transport & Other Ground Transit Operators	455	2.5	2.2	2.4	2.4
H1 Construction trades	34,657	2.7	6.6	-3.9	4.8
H11.725 Plumbers, Pipefitters and Gas Fitters	5,005	2.8	6.3	-3.9	4.7
H111.7251 Plumbers	3,185	2.8	6.8	-4.5	5.0
H112.7252 Steamfitters, Pipefitters and Sprinkler System Installers	1,250	2.9	5.5	-3.1	4.4
H113.7253 Gas Fitters	588	2.3	4.9	-2.1	3.7
H12.727 Carpenters and Cabinetmakers	15,170	2.5	6.3	-3.2	4.5
H121.7271 Carpenters	12,877	2.8	7.0	-4.6	5.1
H122.7272 Cabinetmakers	2,280	1.0	2.2	5.9	1.7
H13.728 Masonry and Plastering Trades	5,236	2.9	7.5	-5.3	5.4
H131.7281 Bricklayers	865	2.8	7.3	-5.1	5.3
H132.7282 Concrete Finishers	900	2.7	6.9	-4.1	4.9
H133.7283 Tilesetters	703	2.9	7.7	-5.6	5.5
H134.7284 Plasterers, Drywall Installers and Finishers and Lathers	2,756	3.0	7.7	-5.8	5.6
H14.729 Other Construction Trades	9,254	2.8	6.9	-4.3	5.0
H141.7291 Roofers and Shinglers	1,742	2.9	7.6	-5.5	5.5
H142.7292 Glaziers	972	2.4	4.8	-0.4	3.7
H143.7293 Insulators	569	2.7	6.9	-4.5	5.0
H144.7294 Painters and Decorators	4,482	2.8	6.9	-4.5	5.1
H145.7295 Floor Covering Installers	1,499	2.9	7.1	-4.8	5.2
H2 Stationary engineers, power station operators and electrical trades and telecommunications occupations	12,597	2.3	3.9	-1.0	3.2

## College Regions of the Lower Mainland\*

### Projected Annual Growth Rates in Occupational Demand

	Estimated Employment	Average Annual % Change			Avg Annual % Chg Over 4 Years
	<u>2005</u>	<u>2007/2005</u>	<u>2009/2007</u>	<u>2010/2009</u>	<u>2009/2005</u>
<b>H21.724 Electrical Trades and Telecommunications Occupations</b>	11,669	2.3	4.1	-1.3	3.3
H211.7241 Electricians (Except Industrial and Power System)	5,072	2.7	6.5	-3.9	4.8
H212.7242 Industrial Electricians	1,581	1.8	3.3	0.7	2.6
H213.7243 Power System Electricians	250	1.9	2.3	0.3	2.2
H214.7244 Electrical Power Line and Cable Workers	574	1.9	2.5	-0.2	2.2
H215.7245 Telecommunications Line and Cable Workers	1,161	2.0	2.3	0.5	2.2
H216.7246 Telecommunications Installation and Repair Workers	2,335	1.9	1.6	1.6	1.8
H217.7247 Cable Television Service and Maintenance Technicians	653	2.0	2.3	0.6	2.2
<b>H22.735 Stationary Engineers and Power Station and System Operators</b>	916	2.1	1.5	3.0	1.8
H221.7351 Stationary Engineers and Auxiliary Equipment Operators	699	2.2	1.7	3.0	2.0
H222.7352 Power Systems and Power Station Operators	213	1.7	1.2	2.5	1.5
<b>H3 Machinists, metal forming, shaping and erecting occupations</b>	12,459	1.4	2.5	4.4	2.0
H31.723 Machinists and Related Occupations	2,994	0.9	1.3	7.5	1.1
H311.7231 Machinists and Machining and Tooling Inspectors	2,636	0.9	1.2	7.5	1.1
H312.7232 Tool and Die Makers	331	0.8	1.3	7.9	1.1
H32.726 Metal Forming, Shaping and Erecting Trades	9,476	1.5	2.9	3.4	2.3
H321.7261 Sheet Metal Workers	1,587	1.8	4.4	0.8	3.2
H322.7262 Boilermakers	321	1.7	2.6	3.8	2.1
H323.7263 Structural Metal and Platework Fabricators and Fitters	1,554	0.8	1.5	7.3	1.2
H324.7264 Ironworkers	820	2.3	5.5	-1.7	4.0
H325.7266 Blacksmiths and Die Setters	46	0.7	1.1	7.5	0.9
H326.7265 Welders and Related Machine Operators	5,134	1.5	2.6	3.9	2.1
<b>H4 Mechanics</b>	23,495	2.1	1.9	4.1	2.0
H41.731 Machinery and Transportation Equipment Mechanics (Except Motor Vehicle)	10,023	1.9	2.4	2.3	2.2
H411.7311 Construction Millwrights and Industrial Mechanics (Except Textile)	2,813	1.9	1.9	2.5	2.0
H412.7312 Heavy-Duty Equipment Mechanics	3,004	1.7	1.8	2.9	1.8
H413.7313 Refrigeration and Air Conditioning Mechanics	895	2.4	4.9	-1.4	3.8
H414.7314 Railway Carmen/women	339	1.6	2.1	2.4	1.9

## College Regions of the Lower Mainland\*

### Projected Annual Growth Rates in Occupational Demand

	Estimated Employment	Average Annual % Change			Avg Annual % Chg Over 4 Years
	<u>2005</u>	<u>2007/2005</u>	<u>2009/2007</u>	<u>2010/2009</u>	<u>2009/2005</u>
H415.7315 Aircraft Mechanics and Aircraft Inspectors	2,269	2.1	2.0	3.3	2.1
H416.7316 Machine Fitters	348	0.9	1.4	7.0	1.2
H417.7317 Textile Machinery Mechanics and Repairers	-	-	-	-	-
H418.7318 Elevator Constructors and Mechanics	363	2.9	7.4	-5.2	5.3
H42.732 Automotive service technicians	11,515	2.3	1.5	5.6	1.9
H421.7321 Automotive Service Technicians, Truck Mechanics and Mechanical Repairers	8,727	2.2	1.5	5.5	1.9
H422.7322 Motor Vehicle Body Repairers	2,787	2.4	1.6	5.8	2.0
H43.733 Other Mechanics	1,937	2.3	1.7	4.9	2.0
H431.7331 Oil and Solid Fuel Heating Mechanics	80	8.7	4.3	-1.9	6.8
H432.7332 Electric Appliance Servicers and Repairers	784	2.3	1.7	4.9	2.1
H433.7333 Electrical Mechanics	328	1.3	1.5	6.1	1.4
H434.7334 Motorcycle and Other Related Mechanics	211	2.2	1.2	5.8	1.7
H435.7335 Other Small Engine and Equipment Mechanics	500	1.9	1.3	5.2	1.6
H5 Other trades n.e.c.	10,237	1.7	2.2	4.3	2.0
H51.734 Upholsterers, Tailors, Shoe Repairers, Jewellers and Related Occupations	2,927	1.5	1.3	7.1	1.5
H511.7341 Upholsterers	517	1.8	1.6	6.5	1.7
H512.7342 Tailors, Dressmakers, Furriers and Milliners	1,961	1.4	1.3	7.4	1.4
H513.7343 Shoe Repairers and Shoemakers	134	2.1	1.7	6.1	1.9
H514.7344 Jewellers, Watch Repairers and Related Occupations	329	1.8	1.0	6.7	1.4
H52.738 Printing Press Operators, Commercial Divers and Other Trades and Related Occupations n.e.c.	2,496	1.1	1.4	6.0	1.3
H521.7381 Printing Press Operators	1,811	1.0	1.3	6.6	1.2
H522.7382 Commercial Divers	50	1.8	2.4	1.6	2.1
H523.7383 Other Trades and Related Occupations	639	1.5	1.7	4.5	1.6
H53.744 Other installers, repairers and servicers	4,828	2.1	3.0	1.9	2.6
H531.7441 Residential and Commercial Installers and Servicers	1,978	2.4	5.7	-2.3	4.2
H532.7442 Waterworks and Gas Maintenance Workers	341	1.6	1.3	1.2	1.5
H533.7443 Automotive Mechanical Installers and Servicers	1,034	2.1	1.2	5.9	1.7

## College Regions of the Lower Mainland\*

### Projected Annual Growth Rates in Occupational Demand

	Estimated Employment	Average Annual % Change			Avg Annual % Chg Over 4 Years
	<u>2005</u>	<u>2007/2005</u>	<u>2009/2007</u>	<u>2010/2009</u>	<u>2009/2005</u>
H534.7444 Pest Controllers and Fumigators	29	1.6	1.1	3.5	1.4
H535.7445 Other Repairers and Servicers	1,411	1.8	1.1	5.4	1.5
H6 Heavy equipment and crane operators including drillers	6,539	2.5	5.6	-3.1	4.2
H61.742 Heavy Equipment Operators	5,426	2.5	5.6	-3.2	4.2
H611.7421 Heavy Equipment Operators (Except Crane)	4,892	2.7	5.9	-3.6	4.5
H612.7422 Public Works Maintenance Equipment Operators	584	2.0	2.8	0.5	2.4
H62.737 Crane Operators, Drillers and Blasters	1,097	2.4	5.2	-2.7	3.9
H621.7371 Crane Operators	736	2.2	4.4	-1.3	3.4
H622.7372 Drillers and Blasters - Surface Mining Quarrying and Construction	278	2.7	6.5	-4.7	4.8
H623.7373 Water Well Drillers	94	3.0	7.9	-6.0	5.7
H7 Transportation equipment operators and related workers, excluding labourers	33,989	2.4	2.2	2.8	2.4
H71.741 Motor Vehicle and Transit Drivers	30,014	2.5	2.2	2.8	2.4
H711.7411 Truck Drivers	16,331	2.8	2.5	2.4	2.7
H712.7412 Bus Drivers and Subway and Other Transit Operators	4,782	2.4	2.3	2.6	2.4
H713.7413 Taxi and Limousine Drivers and Chauffeurs	3,031	2.4	2.2	2.5	2.4
H714.7414 Delivery and Courier Service Drivers	5,887	2.0	1.2	4.4	1.6
H72.736 Train Crew Operating Occupations	943	1.6	2.2	2.2	1.9
H721.7361 Railway and Yard Locomotive Engineers	506	1.6	2.3	2.2	2.0
H722.7362 Railway Conductors and Brakemen/women	439	1.5	2.1	2.4	1.8
H73.743 Other Transport Equipment Operators and Related Workers	3,021	1.8	2.1	2.4	2.0
H731.7431 Railway Yard Workers	113	1.7	2.2	2.4	1.9
H732.7432 Railway Track Maintenance Workers	359	1.7	2.2	2.3	2.0
H733.7433 Deck Crew Water Transport	613	1.3	1.7	2.6	1.5
H734.7434 Engine Room Crew, Water Transport	97	1.3	1.7	3.2	1.5
H735.7435 Lock and Cable Ferry Operators and Related Occupations	347	1.2	2.3	1.8	1.7
H736.7436 Boat Operators	253	1.8	1.9	2.4	1.9
H737.7437 Air Transport Ramp Attendants	1,245	2.7	2.2	2.5	2.5

## College Regions of the Lower Mainland\*

### Projected Annual Growth Rates in Occupational Demand

	Estimated Employment	Average Annual % Change			Avg Annual % Chg Over 4 Years
	<u>2005</u>	<u>2007/2005</u>	<u>2009/2007</u>	<u>2010/2009</u>	<u>2009/2005</u>
<b>H8 Trades helpers, construction and transportation labourers and related occupations</b>	21,918	2.2	3.3	0.5	2.9
H81.745 Longshore Workers and Material Handlers	12,167	1.9	1.2	4.0	1.6
H811.7451 Longshore Workers	1,838	2.6	2.0	3.2	2.3
H812.7452 Material Handlers	10,340	1.8	1.0	4.1	1.4
H82.761 Trades Helpers and Labourers	8,535	2.7	6.5	-3.9	4.8
H821.7611 Construction Trades Helpers and Labourers	7,887	2.8	6.8	-4.4	5.0
H822.7612 Other Trades Helpers and Labourers	660	2.2	2.4	2.9	2.3
H83.762 Public Works and Other Labourers n.e.c.	1,223	2.0	2.6	0.8	2.4
H831.7621 Public Works and Maintenance Labourers	888	1.9	2.6	0.4	2.3
H832.7622 Railway and Motor Transport Labourers	334	2.4	2.6	2.1	2.6
<b>I Occupations unique to primary industry</b>	17,570	1.4	0.9	3.3	1.2
<b>I0 Occupations unique to agriculture, excluding labourers</b>	10,157	1.1	0.6	4.0	0.9
<b>I01.825 Contractors, Operators and Supervisors in Agriculture, Horticulture and Aquaculture</b>	5,749	1.1	0.7	3.8	0.9
I011.8251 Farmers and Farm Managers	3,796	0.9	0.4	4.3	0.7
I012.8252 Agricultural and Related Service Contractors and Managers	127	1.7	1.0	3.2	1.4
I013.8253 Farm Supervisors and Specialized Livestock Workers	470	1.4	1.1	2.9	1.3
I014.8254 Nursery and Greenhouse Operators and Managers	329	1.1	0.4	4.7	0.8
I015.8255 Landscaping & Grounds Maintenance Contractors & Managers	216	2.3	3.4	0.7	3.0
I016.8256 Supervisors, Landscape and Horticulture	582	1.7	1.4	2.0	1.6
I017.8257 Aquaculture Operators and Managers	211	1.2	0.7	3.7	1.0
<b>I02.843 Agriculture and Horticulture Workers</b>	4,432	1.0	0.4	4.3	0.7
I021.8431 General Farm Workers	2,891	1.0	0.5	4.2	0.7
I022.8432 Nursery and Greenhouse Workers	1,543	1.1	0.4	4.6	0.7
<b>I1 Occupations unique to forestry operations, mining, oil and gas extraction and fishing excluding labourers</b>	2,564	2.0	1.1	2.2	1.6
I11.821 Supervisors, Logging and Forestry	331	1.4	0.7	2.4	1.1
I111.8211 Supervisors, Logging and Forestry	321	1.5	0.7	2.3	1.1
I12.822 Supervisors, Mining, Oil and Gas	203	1.6	1.5	1.3	1.6

## College Regions of the Lower Mainland\*

### Projected Annual Growth Rates in Occupational Demand

	Estimated Employment	Average Annual % Change			Avg Annual % Chg Over 4 Years
	<u>2005</u>	<u>2007/2005</u>	<u>2009/2007</u>	<u>2010/2009</u>	<u>2009/2005</u>
I121.8221 Supervisors, Mining and Quarrying	124	0.8	1.1	2.8	1.0
I122.8222 Supervisors, Oil and Gas Drilling and Service	73	2.9	2.5	-1.9	2.8
I13.823 Underground Miners, Oil and Gas Drillers and Related Workers	213	3.8	1.1	1.1	2.5
I131.8231 Underground Production and Development Miners	128	1.0	1.0	1.1	1.0
I132.8232 Oil and Gas Well Drillers, Servicers, Testers and Related Workers	93	7.9	1.9	0.0	5.0
I14.841 Mine Service Workers and Operators in Oil and Gas Drilling	194	4.9	2.2	0.2	3.7
I141.8411 Underground Mine Service and Support Workers	91	1.6	2.4	1.9	2.0
I142.8412 Oil and Gas Well Drilling Workers and Services Operators	104	7.7	2.0	-0.6	5.0
I15.824 Logging Machinery Operators	413	1.5	1.2	0.6	1.4
I151.8241 Logging Machinery Operators	404	1.5	1.1	0.6	1.3
I16.842 Logging and Forestry Workers	674	1.6	0.6	0.7	1.1
I161.8421 Chain-saw and Skidder Operators	357	1.6	0.3	0.3	1.0
I162.8422 Silviculture and Forestry Workers	334	1.6	0.8	1.4	1.2
I17.826 Fishing Vessel Masters and Skippers and Fishermen/women	392	1.6	1.4	6.9	1.5
I171.8261 Fishing Masters and Officers	38	1.5	1.4	6.5	1.5
I172.8262 Fishing Vessel Skippers and Fishermen/women	355	1.6	1.4	6.8	1.5
I18.844 Other Fishing and Trapping Occupations	108	1.5	1.5	6.6	1.5
I181.8441 Fishing Vessel Deckhands	87	1.8	1.4	6.5	1.6
I182.8442 Trappers and Hunters	15	1.6	1.4	7.1	1.5
I2 Primary production labourers	4,877	1.7	1.5	2.3	1.6
I21.861 Primary Production Labourers	4,871	1.7	1.5	2.3	1.6
I211.8611 Harvesting Labourers	408	0.9	0.4	4.3	0.6
I212.8612 Landscaping and Grounds Maintenance Labourers	3,356	1.9	1.8	2.2	1.9
I213.8613 Aquaculture and Marine Harvest Labourers	284	1.2	0.7	4.8	1.0
I214.8614 Mine Labourers	87	1.2	1.7	0.3	1.5
I215.8615 Oil and Gas Drilling, Servicing and Related Labourers	139	2.8	2.5	-0.9	2.8
I216.8616 Logging and Forestry Labourers	601	1.3	0.4	1.4	0.9
J Occupations unique to processing, manufacturing and utilities	47,921	1.7	1.3	5.2	1.5
J0 Supervisors in manufacturing	3,736	2.1	1.3	4.9	1.7



## College Regions of the Lower Mainland\*

### Projected Annual Growth Rates in Occupational Demand

	Estimated Employment	Average Annual % Change			Avg Annual % Chg Over 4 Years
	<u>2005</u>	<u>2007/2005</u>	<u>2009/2007</u>	<u>2010/2009</u>	<u>2009/2005</u>
J01.921 Supervisors, Processing Occupations	2,234	3.0	1.2	3.3	2.1
J011.9211 Supervisors, Mineral and Metal Processing	426	0.8	1.5	5.4	1.2
J012.9212 Supervisors, Petroleum, Gas and Chemical Processing and Utilities	230	12.6	0.7	0.7	6.7
J013.9213 Supervisors, Food, Beverage and Tobacco Processing	728	3.4	1.3	2.0	2.4
J014.9214 Supervisors, Plastic and Rubber Products Manufacturing	78	0.8	1.9	7.1	1.4
J015.9215 Supervisors, Forest Products Processing	711	1.0	0.9	3.9	1.0
J016.9216 Supervisors, Textile Processing	46	0.8	1.1	7.7	1.0
J02.922 Supervisors, Assembly and Fabrication	1,468	0.8	1.3	7.4	1.1
J021.9221 Supervisors, Motor Vehicle Assembling	84	1.2	1.3	7.2	1.3
J022.9222 Supervisors, Electronics Manufacturing	226	0.8	1.1	7.9	0.9
J023.9223 Supervisors, Electrical Products Manufacturing	118	0.6	1.1	8.6	0.9
J024.9224 Supervisors, Furniture and Fixtures Manufacturing	206	0.6	1.0	7.9	0.8
J025.9225 Supervisors, Fabric, Fur and Leather Products Manufacturing	186	0.6	1.2	8.8	0.9
J026.9226 Supervisors, Other Mechanical and Metal Products Manufacturing	372	0.9	1.6	6.9	1.3
J027.9227 Supervisors, Other Products Manufacturing and Assembly	314	0.8	1.5	6.0	1.2
J1 Machine operators in manufacturing	19,727	1.8	1.3	5.1	1.6
J11.923 Central Control and Process Operators in Manufacturing and Processing	772	8.4	1.0	1.0	4.8
J111.9231 Central Control & Process Operators Mineral & Metal Processing	199	0.8	1.0	2.9	0.9
J112.9232 Petroleum, Gas and Chemical Process Operators	305	18.7	1.0	0.1	10.0
J113.9233 Pulping Control Operators	94	2.3	1.8	-0.1	2.1
J114.9234 Papermaking and Coating Control Operators	163	2.0	1.2	1.2	1.6
J12.941 Machine Operators and Related Workers in Metal and Mineral Products Processing	1,831	0.9	1.6	5.4	1.3
J121.9411 Machine Operators, Mineral and Metal Processing	438	0.9	1.1	3.7	1.0
J122.9412 Foundry Workers	244	0.7	0.9	3.4	0.8

## *College Regions of the Lower Mainland\**

### **Projected Annual Growth Rates in Occupational Demand**

	Estimated Employment	Average Annual % Change			Avg Annual % Chg Over 4 Years
	<u>2005</u>	<u>2007/2005</u>	<u>2009/2007</u>	<u>2010/2009</u>	<u>2009/2005</u>
<b>J123.9413 Glass Forming and Finishing Machine Operators and Glass Cutters</b>	433	0.7	1.3	8.3	1.0
<b>J124.9414 Concrete, Clay and Stone Forming Operators</b>	614	1.2	2.5	5.0	1.9
<b>J125.9415 Inspectors and Testers, Mineral and Metal Processing</b>	149	1.0	1.1	7.2	1.1
<b>J13.942 Machine Operators and Related Workers in Chemical, Plastic and Rubber Processing</b>	613	1.4	0.9	3.8	1.2
<b>J131.9421 Chemical Plant Machine Operators</b>	131	1.6	0.8	4.5	1.2
<b>J132.9422 Plastics Processing Machine Operators</b>	109	0.9	1.3	6.1	1.1
<b>J133.9423 Rubber Processing Machine Operators and Related Workers</b>	118	1.2	0.8	6.7	1.0
<b>J134.9424 Water and Waste Plant Operators</b>	283	1.5	1.0	1.6	1.3
<b>J14.943 Machine Operators and Related Workers in Pulp and Paper Production and Wood Processing</b>	3,229	0.8	1.0	4.2	0.9
<b>J141.9431 Sawmill Machine Operators</b>	1,132	0.5	0.9	5.0	0.7
<b>J142.9432 Pulp Mill Machine Operators</b>	278	2.2	1.3	0.9	1.7
<b>J143.9433 Papermaking and Finishing Machine Operators</b>	223	1.9	1.4	2.0	1.6
<b>J144.9434 Other Wood Processing Machine Operators</b>	646	0.6	1.2	4.4	0.9
<b>J145.9435 Paper Converting Machine Operators</b>	179	1.7	0.9	3.2	1.3
<b>J146.9436 Lumber Graders and Other Wood Processing Inspectors and Graders</b>	783	0.5	0.7	5.0	0.6
<b>J15.944 Machine Operators and Related Workers in Textile Processing</b>	415	1.1	1.0	7.5	1.0
<b>J151.9441 Textile Fibre and Yarn Preparation Machine Operators</b>	30	0.7	1.1	7.8	0.9
<b>J152.9442 Weavers, Knitters and Other Fabric-Making Occupations</b>	172	0.9	1.1	8.2	1.0
<b>J153.9443 Textile Dyeing and Finishing Machine Operators</b>	67	1.5	0.9	6.8	1.2
<b>J154.9444 Textile Inspectors, Graders and Samplers</b>	156	1.0	1.0	7.2	1.0
<b>J16.945 Machine Operators and Related Workers in Fabric, Fur and Leather Products Manufacturing</b>	3,637	0.8	1.2	8.3	1.0
<b>J161.9451 Sewing Machine Operators</b>	3,227	0.8	1.2	8.2	1.0
<b>J162.9452 Fabric, Fur and Leather Cutters</b>	280	0.7	1.2	8.6	0.9
<b>J163.9453 Hide and Pelt Processing Workers</b>	24	0.8	0.1	6.2	0.5

## *College Regions of the Lower Mainland\**

### **Projected Annual Growth Rates in Occupational Demand**

	Estimated Employment	Average Annual % Change			Avg Annual % Chg Over 4 Years
	<u>2005</u>	<u>2007/2005</u>	<u>2009/2007</u>	<u>2010/2009</u>	<u>2009/2005</u>
J164.9454 Inspectors and Testers, Fabric, Fur and Leather Products Manufacturing	87	0.6	1.2	8.7	0.9
J17.946 Machine Operators and Related Workers in Food, Beverage and Tobacco Processing	3,936	3.8	1.6	1.5	2.8
J171.9461 Process Control and Machine Operators, Food and Beverage Processing	1,608	3.8	1.5	1.7	2.7
J172.9462 Industrial Butchers and Meat Cutters, Poultry Preparers and Related Workers	880	4.1	1.7	1.2	3.0
J173.9463 Fish Plant Workers	1,092	4.0	1.7	1.0	2.9
J174.9464 Tobacco Processing Machine Operators	0	-	-	-	-
J175.9465 Testers and Graders, Food and Beverage Processing	330	2.9	1.1	2.7	2.1
J18.947 Printing Machine Operators and Related Occupations	3,088	1.4	1.3	6.7	1.4
J181.9471 Printing Machine Operators	951	1.0	1.2	7.4	1.1
J182.9472 Camera, Platemaking and Other Pre-Press Occupations	398	1.0	1.2	6.9	1.1
J183.9473 Binding and Finishing Machine Operators	627	1.0	1.3	7.1	1.2
J184.9474 Photographic and Film Processors	1,119	2.2	1.3	5.9	1.8
J19.951 Machining, Metalworking, Woodworking and Related Machine Operators	2,149	0.8	1.2	6.9	1.0
J191.9511 Machining Tool Operators	332	0.9	1.3	7.1	1.1
J192.9512 Forging Machine Operators	71	0.9	1.0	7.6	1.0
J193.9513 Woodworking Machine Operators	822	0.7	1.3	6.4	1.0
J194.9514 Metalworking Machine Operators	465	0.7	1.0	7.2	0.9
J196.9516 Other Metal Products Machine Operators.	206	0.8	1.4	6.4	1.1
J197.9517 Other Products Machine Operators	247	0.7	1.0	8.1	0.9
J2 Assemblers in manufacturing	10,196	1.0	1.5	7.0	1.2
J21.948 Mechanical, Electrical and Electronics Assemblers	3,779	0.9	1.3	7.6	1.1
J211.9481 Aircraft Assemblers and Aircraft Assembly Inspectors	173	0.9	1.4	7.3	1.2
J212.9482 Motor Vehicle Assemblers, Inspectors and Testers	505	1.1	1.1	6.9	1.1
J213.9483 Electronics Assemblers, Fabricators, Inspectors and Testers	1,267	0.8	1.2	8.0	1.0

## College Regions of the Lower Mainland\*

### Projected Annual Growth Rates in Occupational Demand

	Estimated Employment	Average Annual % Change			Avg Annual % Chg Over 4 Years
	<u>2005</u>	<u>2007/2005</u>	<u>2009/2007</u>	<u>2010/2009</u>	<u>2009/2005</u>
J214.9484 Assemblers and Inspectors, Electrical Appliance, Apparatus and Equipment Manufacturing	429	0.8	1.2	8.0	1.0
J215.9485 Assemblers, Fabricators and Inspectors, Industrial Electrical Motors and Transformers	313	1.0	1.4	6.3	1.2
J216.9486 Mechanical Assemblers and Inspectors	825	0.9	1.3	7.5	1.1
J217.9487 Machine Operators and Inspectors, Electrical Apparatus Manufacturing	243	0.6	1.2	8.7	0.9
J22.949 Other Assembly and Related Occupations	6,434	1.1	1.6	6.6	1.3
J221.9491 Boat Assemblers and Inspectors	1,157	0.8	1.3	8.0	1.1
J222.9492 Furniture and Fixture Assemblers and Inspectors	1,969	1.0	1.4	7.2	1.2
J223.9493 Other Wood Products Assemblers and Inspectors	819	1.5	1.8	4.1	1.6
J224.9494 Furniture Finishers and Refinishers	500	1.4	1.7	6.7	1.5
J225.9495 Plastic Products Assemblers, Finishers and Inspectors	221	0.7	1.1	8.3	0.9
J226.9496 Painters and Coaters - Industrial	975	1.5	2.5	4.2	2.0
J227.9497 Plating, Metal Spraying and Related Operators	192	0.8	1.3	8.2	1.0
J228.9498 Other Assemblers and Inspectors	613	0.9	1.2	7.6	1.1
J3 Labourers in processing, manufacturing and utilities	14,248	2.0	1.1	4.1	1.6
J31.961 Labourers in Processing, Manufacturing and Utilities	14,271	2.0	1.1	4.1	1.6
J311.9611 Labourers in Mineral and Metal Processing	589	0.8	1.1	4.4	0.9
J312.9612 Labourers in Metal Fabrication	1,033	0.8	1.4	7.0	1.1
J313.9613 Labourers in Chemical Products Processing and Utilities	152	9.6	0.7	1.5	5.3
J314.9614 Labourers in Wood Pulp and Paper Processing	3,730	0.7	0.9	4.4	0.8
J315.9615 Labourers in Rubber and Plastic Products Manufacturing	164	0.8	0.9	7.7	0.8
J316.9616 Labourers in Textile Processing	164	0.6	1.0	8.3	0.8
J317.9617 Labourers in Food Beverage and Tobacco Processing	4,432	3.4	1.3	2.1	2.4
J318.9618 Labourers in Fish Processing	1,098	3.9	1.6	1.1	2.8
J319.9619 Other Labourers in Processing, Manufacturing and Utilities	2,901	1.1	1.0	6.7	1.1

- suppressed due to small numbers