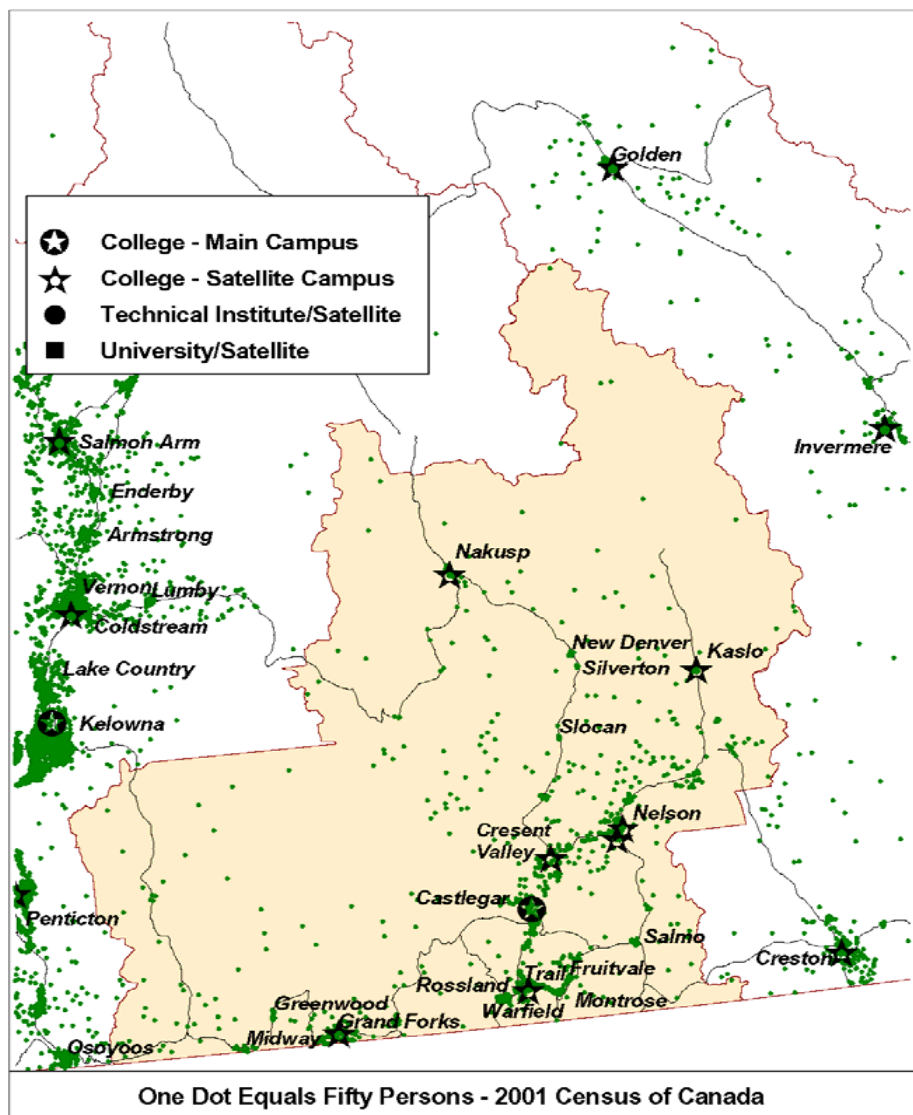


# INDUSTRY AND OCCUPATION PROJECTIONS: 2006 -- 2010

## SELKIRK COLLEGE REGION



Background Information on Geographic Location of Population

Major Cities	Population <u>2005</u>	% of <u>Region</u>	Land <u>Area</u> <small>Sq Km</small>	Population <u>Density</u> <small>Persons per Sq Km</small>
Nelson	9,797	12.2	7.3	1347.6
Trail	7,889	9.8	34.8	226.8
Castlegar	7,821	9.7	18.0	434.5
Grand Forks	4,200	5.2	10.4	402.3
Rossland	3,725	4.6	49.2	75.7
Fruitvale	2,083	2.6	2.7	783.1
Nakusp	1,779	2.2	7.4	239.8
Warfield	1,751	2.2	1.9	921.6
Salmo	1,133	1.4	2.4	476.1
Montrose	1,086	1.4	1.5	714.5
Kaslo	1,075	1.3	2.8	383.9
Greenwood	668	0.8	2.5	264.0
Midway	630	0.8	12.2	51.8
New Denver	549	0.7	1.1	513.1
Slocan	357	0.4	0.8	476.0
Silverton	230	0.3	0.4	522.7
Rest of Region	35,626	44.3	27359.1	1.3
<b>Total Region</b>	<b>80,399</b>	<b>100.0</b>	<b>27514.4</b>	<b>2.9</b>
<b>Region as % of BC</b>	<b>1.9</b>		<b>3.0</b>	
<b>Youth Age 15-29</b>	<b>11,967</b>			
<b>Youth in Region as % of BC</b>	<b>2.0</b>			

## **Note to Users**

**All assumptions relating to employment are based on past conditions, modified wherever possible to take into consideration future changes. Consequently, the resulting employment projections are not necessarily what will be, but rather what could be, given the realization of these conditions. It is certainly possible that unforeseen changes in factors such as economic development, government policy, land use and zoning will affect future employment. Consequently, the projections should only be regarded as one possible scenario on the future size and distribution of the workforce.**

# Regional Employment Projection Model (REPM)

BC STATS is grateful for the support and financial assistance from the Ministry of Advanced Education in developing the model.

## Contents

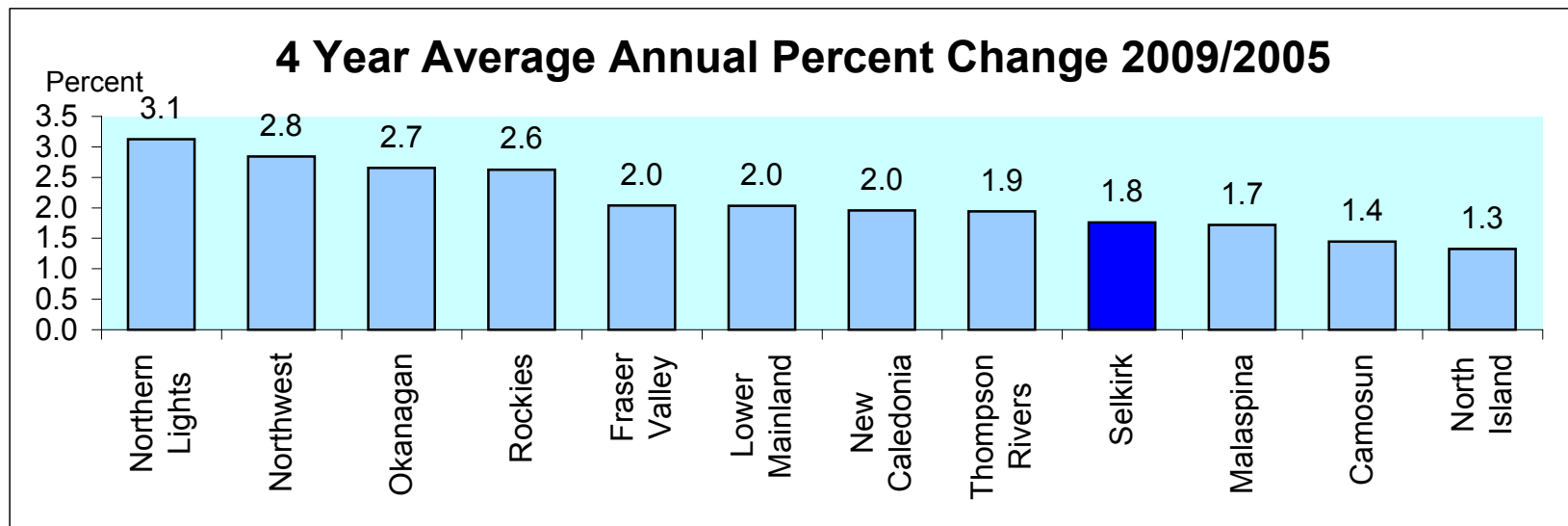
1. Projected Annual Growth in Employment Demand by College Region
2. Industrial Structure in the College Region Compared with BC, 2005 and 2009
3. Projected Annual Growth in Employment Demand by Industry
4. Occupational Structure in the College Region Compared with BC, 2005 and 2009
5. Projected Annual Growth Rates in Occupational Demand (1-digit)
6. Projected Annual Growth Rates in Occupational Demand (2-digits)

## Appendices

1. Methodology
2. COPS Industry Conversion to REPM
3. Regional District to College Region Conversion for REPM
4. Projected Annual Growth Rates in Occupational Demand (3-digit)
5. Projected Annual Growth Rates in Occupational Demand (4-digit)

# Projected Annual Growth in Employment Demand by College Region

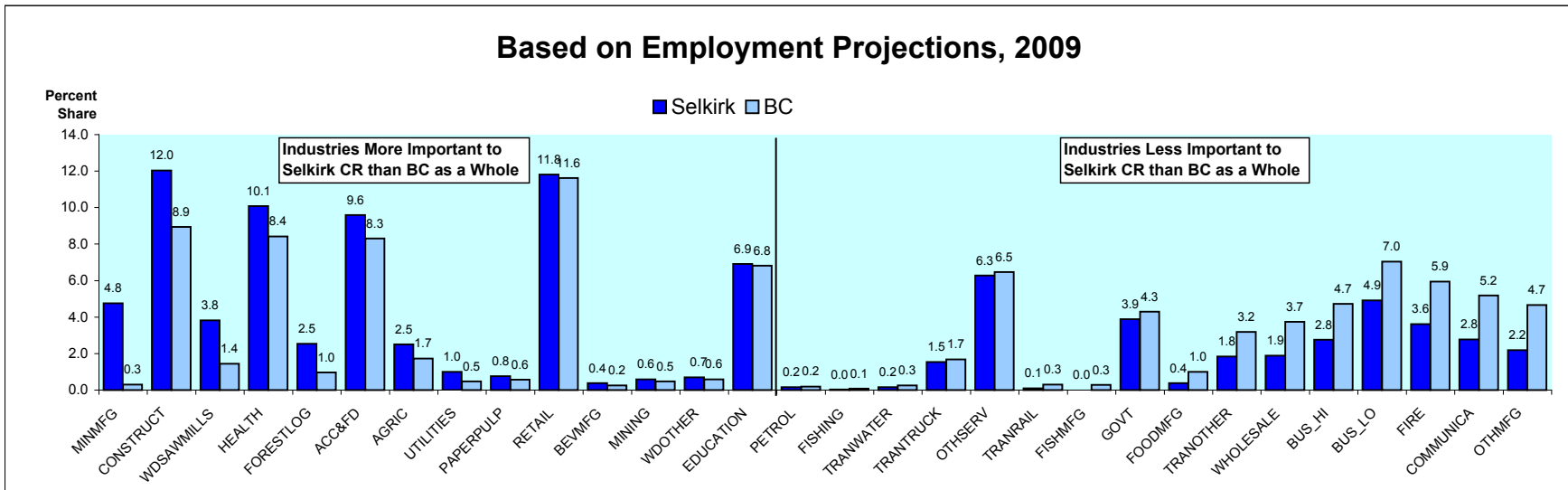
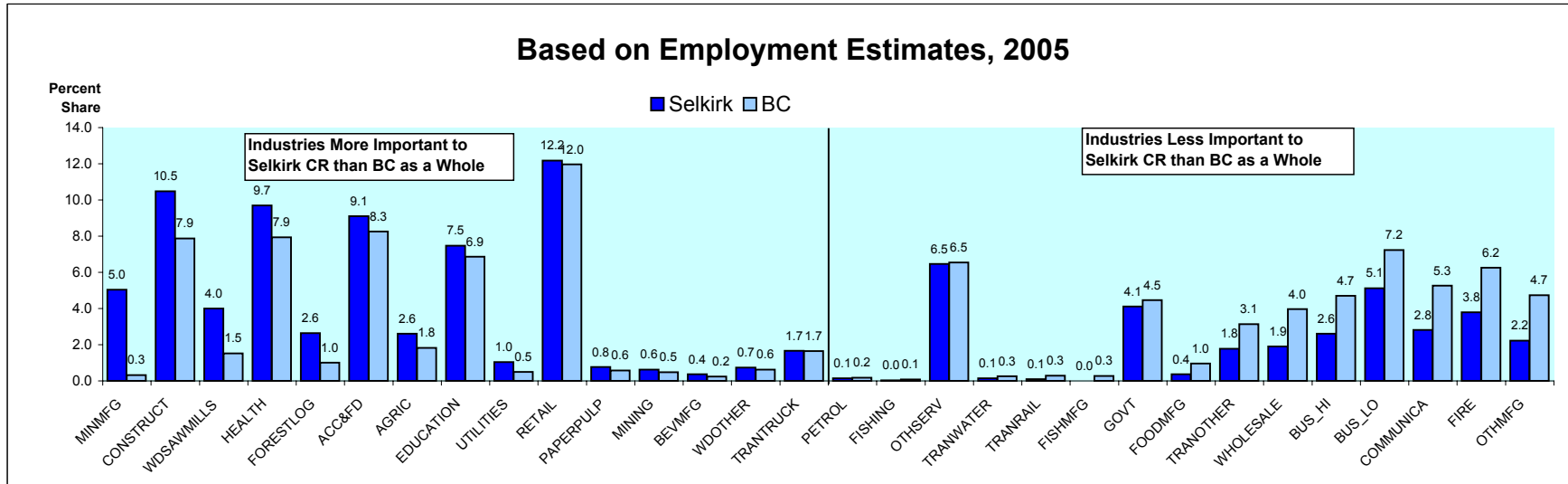
	Estimated Employment	Projected Employment Levels		Average Annual % Chg			Avg Annual % Chg Over 4 Years
	2005	2009	2010	2007/2005	2009/2007	2010/2009	2009/2005
Northern Lights	34,708	39,046	39,220	3.1	2.9	0.4	3.1
Northwest	34,597	38,531	39,845	2.3	3.2	3.4	2.8
Okanagan	175,281	193,888	201,600	2.3	2.9	4.0	2.7
Rockies	37,929	41,910	43,335	2.3	2.8	3.4	2.6
Fraser Valley	120,271	130,067	133,725	1.8	2.2	2.8	2.0
Lower Mainland	1,182,258	1,278,495	1,327,306	2.1	1.9	3.8	2.0
New Caledonia	75,311	81,207	83,482	1.8	2.0	2.8	2.0
Thompson Rivers	85,651	92,310	94,914	1.8	2.0	2.8	1.9
<b>Selkirk</b>	<b>36,829</b>	<b>39,421</b>	<b>40,304</b>	<b>1.5</b>	<b>2.0</b>	<b>2.2</b>	<b>1.8</b>
Malaspina	109,580	117,129	120,067	1.4	2.0	2.5	1.7
Camosun	167,460	177,149	181,894	1.3	1.6	2.7	1.4
North Island	70,227	73,956	75,509	1.2	1.4	2.1	1.3
<b>Total</b>	<b>2,130,101</b>	<b>2,303,108</b>	<b>2,381,200</b>	<b>2.0</b>	<b>2.0</b>	<b>3.4</b>	<b>2.0</b>



# Industrial Structure in the Selkirk College Region Compared with BC

Percent Share of Employment by Industry

Ranked by the Percentage Point Difference in the Industry Share in the College Region Compared with BC



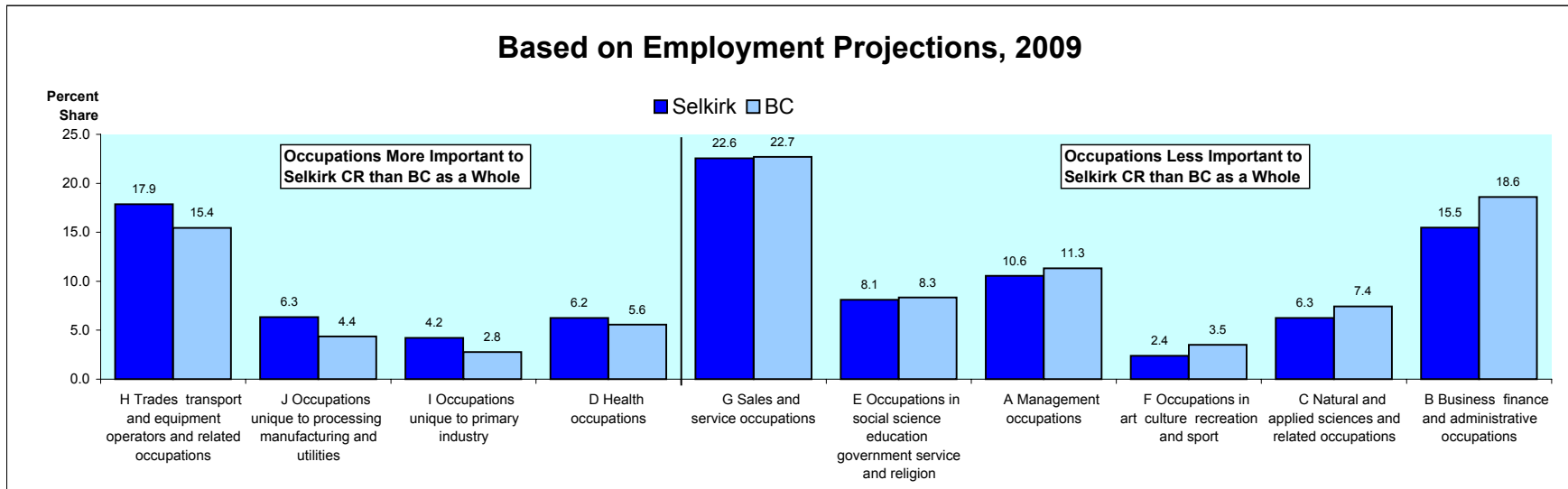
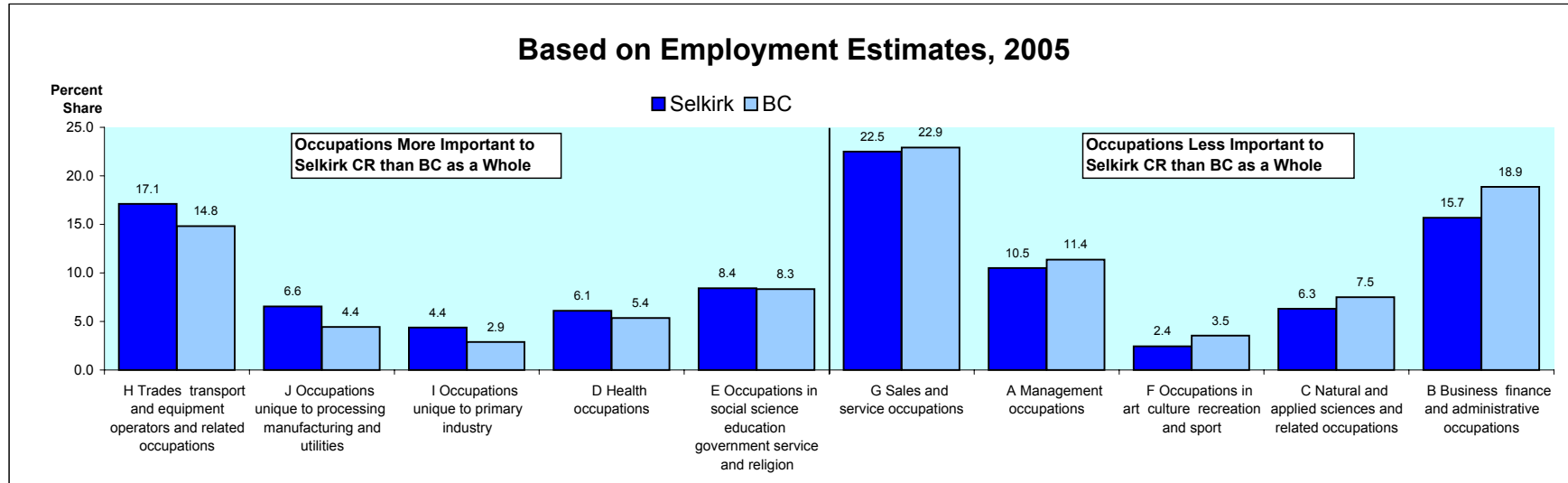
## Selkirk College Region

	Estimated	Projected		Average Annual % Chg			Avg Annual % Chg
	Employment	Employment Levels					Over 4 Years
	<u>2005</u>	<u>2009</u>	<u>2010</u>	<u>2007/2005</u>	<u>2009/2007</u>	<u>2010/2009</u>	<u>2009/2005</u>
ACC&FD	3,354	3,782	4,056	2.6	3.6	7.2	3.2
AGRIC	961	986	1,029	0.9	0.4	4.4	0.6
BEVMFG	135	151	153	4.0	1.7	1.0	2.9
BUS_HI	963	1,090	1,129	2.4	4.0	3.6	3.3
BUS_LO	1,886	1,935	1,972	0.6	0.7	1.9	0.6
COMMUNICA	1,037	1,096	1,106	1.4	1.3	0.9	1.4
CONSTRUCT	3,861	4,743	4,466	3.0	8.0	-5.8	5.7
EDUCATION	2,752	2,723	2,701	0.1	-0.6	-0.8	-0.3
FIRE	1,394	1,428	1,489	1.0	0.2	4.3	0.6
FISHING	-	-	-	-	-	-	-
FISHMFG	0	0	0				
FOODMFG	138	150	152	2.7	1.7	0.8	2.3
FORESTLOG	972	999	990	1.8	-0.4	-0.9	0.7
GOVT	1,516	1,532	1,537	0.2	0.3	0.3	0.3
HEALTH	3,570	3,973	4,105	2.7	2.8	3.3	2.8
MINING	227	232	237	0.7	0.5	1.9	0.6
MINMFG	1,854	1,877	1,879	0.5	0.1	0.2	0.3
OTHMFG	817	861	928	0.9	1.8	7.7	1.4
OTHSERV	2,378	2,476	2,592	1.0	1.0	4.7	1.0
PAPERPULP	283	303	304	2.2	1.2	0.5	1.8
PETROL	53	64	60	6.1	3.9	-6.3	5.2
PETROLMFG	0	0	0	-	-	-	-
RETAIL	4,484	4,656	4,898	1.3	0.6	5.2	1.0
TRANOTHER	652	726	740	2.8	2.6	2.0	2.8
TRANRAIL	34	40	41	5.3	2.8	2.3	4.2
TRANTRUCK	615	606	612	-1.7	0.9	1.1	-0.4
TRANWATER	53	63	65	5.9	3.4	2.6	4.9
UTILITIES	384	394	399	0.9	0.4	1.1	0.6
WDOTHER	270	276	291	0.4	0.8	5.2	0.6
WDSAWMILLS	1,471	1,506	1,585	0.4	0.8	5.2	0.6
WHOLESALE	703	743	778	0.6	2.2	4.7	1.4
<b>ALL INDUSTRIES</b>	<b>36,829</b>	<b>39,421</b>	<b>40,304</b>	<b>1.5</b>	<b>2.0</b>	<b>2.2</b>	<b>1.8</b>

# Occupational Structure in the Selkirk College Region Compared with BC

## Percent Share of Employment by Occupation

Ranked by the Percentage Point Difference in the Occupation Share in the College Region Compared with BC



## Selkirk College Region

### Projected Annual Growth Rates in Occupational Demand

	Estimated Employment	Average Annual % Change			Avg Annual % Chg Over 4 Years
	<u>2005</u>	<u>2007/2005</u>	<u>2009/2007</u>	<u>2010/2009</u>	<u>2009/2005</u>
<b>All occupations</b>	36,829	1.5	2.0	2.2	1.8
<b>A Management occupations</b>	3,867	1.6	2.2	2.6	1.9
<b>B Business finance and administrative occupations</b>	5,778	1.3	1.5	2.3	1.4
<b>C Natural and applied sciences and related occupations</b>	2,326	1.3	1.7	1.5	1.5
<b>D Health occupations</b>	2,251	2.3	2.3	3.6	2.3
<b>E Occupations in social science education government service and religion</b>	3,100	0.9	0.6	1.2	0.8
<b>F Occupations in art culture recreation and sport</b>	897	1.1	1.2	1.7	1.1
<b>G Sales and service occupations</b>	8,291	1.7	1.8	4.9	1.8
<b>H Trades transport and equipment operators and related occupations</b>	6,302	1.7	4.0	-1.3	2.9
<b>I Occupations unique to primary industry</b>	1,606	1.2	0.4	2.4	0.8
<b>J Occupations unique to processing manufacturing and utilities</b>	2,413	0.8	1.0	3.0	0.9



## **Projected Annual Growth Rates in Occupational Demand (2-digits)**

# Selkirk College Region

## Projected Annual Growth Rates in Occupational Demand

	Estimated Employment	Average Annual % Change			Avg Annual % Chg Over 4 Years
	<u>2005</u>	<u>2007/2005</u>	<u>2009/2007</u>	<u>2010/2009</u>	<u>2009/2005</u>
All occupations	36,829	1.5	2.0	2.2	1.8
A2 Managers in retail trade food and accommodation services	428	1.3	2.0	1.7	1.6
A3 Other managers n.e.c.	736	1.2	1.6	2.5	1.4
B0 Professional occupations in business and finance	1,413	1.8	1.8	5.7	1.9
B1 Finance and insurance administration occupations	1,293	1.6	3.1	-0.5	2.4
B2 Secretaries	940	1.1	1.2	2.6	1.2
B3 Administrative and regulatory occupations	549	1.3	1.9	2.0	1.6
B4 Clerical supervisors	782	1.4	1.9	1.5	1.7
B5 Clerical occupations	611	1.3	1.9	1.7	1.6
C0 Professional occupations in natural and applied sciences	118	1.1	1.1	2.6	1.1
C1 Technical occupations related to natural and applied sciences	2,780	1.3	1.4	2.5	1.3
D0 Professional occupations in health	1,264	1.2	1.6	1.8	1.4
D1 Nurse supervisors and registered nurses	1,062	1.4	1.8	1.2	1.6
D2 Technical and related occupations in health	516	2.2	2.2	3.6	2.3
D3 Assisting occupations in support of health services	605	2.4	2.4	3.5	2.5
E0 Judges, lawyers, psychologists, social workers, ministers of religion & policy/program officers	557	2.2	2.2	3.5	2.3
E1 Teachers and professors	573	2.3	2.3	3.7	2.4
E2 Paralegals, social services workers & occup. in educ. & religion n.e.c.	775	1.4	1.6	2.6	1.5
F0 Professional occupations in art and culture	1,471	0.1	-0.6	-0.7	-0.2
F1 Technical occupations in art, culture, recreation and sport	856	1.8	1.7	2.7	1.8
G0 Sales and service supervisors	372	1.0	0.9	1.1	0.9
G1 Wholesale, technical, insurance, real estate sales specialists & retail, wholesale and grain buyers	522	1.2	1.4	2.1	1.3
G2 Retail salespersons and sales clerks	248	1.9	2.0	5.4	2.0
G3 Cashiers	498	1.1	1.4	3.5	1.3
G4 Chefs and cooks	1,430	1.4	0.8	4.9	1.1
G5 Occupations in food and beverage service	651	1.5	1.0	5.3	1.3

# Selkirk College Region

## Projected Annual Growth Rates in Occupational Demand

	Estimated Employment	Average Annual % Change			Avg Annual % Chg Over 4 Years
	<u>2005</u>	<u>2007/2005</u>	<u>2009/2007</u>	<u>2010/2009</u>	<u>2009/2005</u>
G6 Occupations in protective services	655	2.5	3.4	6.6	3.0
G7 Occup. in travel & accommodation incl. attendants in recreation & sport	825	2.5	3.5	7.0	3.1
G8 Childcare and home support workers	349	0.5	0.6	1.0	0.5
G9 Sales and service occupations n.e.c.	253	2.3	2.7	4.1	2.6
H0 Contractors and supervisors in trades and transportation	782	1.4	1.2	2.6	1.3
H1 Construction trades	2,597	1.8	2.0	5.1	1.9
H2 Stationary engineers, power stn operators & electrical trades & telecom.	360	2.3	5.6	-3.2	4.1
H3 Machinists, metal forming, shaping and erecting occupations	1,564	2.7	7.0	-4.7	5.0
H4 Mechanics	524	1.9	4.1	-2.0	3.1
H5 Other trades n.e.c.	468	1.3	2.6	0.4	2.0
H6 Heavy equipment and crane operators including drillers	916	1.2	1.6	2.4	1.4
H7 Transport equipment operators & related workers, excl. labourers	306	1.5	2.7	1.9	2.1
H8 Trades helpers, construction and transport labourers & related	385	2.0	4.5	-2.8	3.3
I0 Occupations unique to agriculture, excluding labourers	969	0.5	1.7	1.4	1.2
I1 Occup. unique to forestry ops, mining, oil & gas extraction, fishing excl. labourers	808	1.8	4.0	-1.0	3.0
I2 Primary production labourers	836	0.9	0.5	4.1	0.7
J0 Supervisors in manufacturing	424	1.6	0.2	0.1	0.9
J1 Machine operators in manufacturing	348	1.4	0.6	1.2	1.0
J2 Assemblers in manufacturing	237	0.8	0.9	2.4	0.8
J3 Labourers in processing, manufacturing and utilities	1,113	0.8	0.9	2.8	0.9

## Appendix 1

### **Summary of Methodology for the British Columbia Regional Employment Projection Model (REPM)**

The methodology used in the model has come largely from previous work on community dependencies carried out earlier by BC STATS. The fundamental premise is that the economy of a region can be represented by income flows that can be classified as “basic” (or driver) and “non-basic” (or support) depending on the source of the income.

The model calculates indirect employment effects from employment changes in the basic sectors using multipliers based in inter-industry linkages from the British Columbia Input-Output Model. Similarly, non-basic, or induced effects are calculated using an income-to-non-basic-jobs ratio.

The current version of the model is benchmarked to the 2001 Census employment by Regional District, and is projected forward up to the most up-to-date annual employment data from the Labour Force Survey. The growth rates from the Labour Force Survey (LFS) at the provincial level for the basic industries are used to project growth down to the Regional District level. The model then calculates the indirect jobs based on the Regional District specific multipliers. The direct and indirect employment levels are then used to calculate the wages and salaries earned in the basic industries which in turn are converted to employment in the non-basic industries through the income to support-industry job multipliers. As well, transfer payments and investment income are also converted to employment in the non-basic industries using the same multipliers. The output from the model is then benchmarked to the LFS industry numbers at the BC level as well as to the LFS regional employment numbers for the Development Regions and the Capital and Greater Vancouver Regional Districts. In the current version of the model, the employment numbers are reconciled up to the 2005 annual averages from the LFS.

Once the model is brought up to the most current employment levels, then the forecast is carried out for five to ten years further. The industrial employment projections from the Canadian Occupational Projection System (COPS) are now used as the source data for the industrial growth, both in determining the growth rates in the direct employment and then as a benchmark on which to reconcile the industrial employment generated by the model.

While the total employment is forced to the COPS employment levels, there is leeway to adjust growth rates by industry across the sub-provincial regions. There are some standard variables that are used to differentiate the outlook for

the regions. For example, the growth in the education sector is dictated by the projected K-12 and post-secondary population growth in the relevant age groups. Government Services is projected in line with the total population projections for the Regional Districts. Employment in the Health Sector is so often governed by the growth in the senior's population as are the transfer payments flowing in. (CPP and OAS is a large component of transfer payments). As well, pensions from private pension plans are considered investment income meaning seniors receive a high proportion of the total investment income in a region.

An important determining factor of growth by region is the major projects coming on stream in the outlook timeframe. Firstly they impact construction employment and secondly many will impact specific industries once they move into the production phase. In BC, we are dealing with the preparations for the 2010 Winter Games so many of the construction occupations will be in short supply.

The intent is to update the REPM annually, based on another year of LFS data plus a new COPS forecast. Currently, there is a demand for economic forecasts by occupation at the college region level. College Regions are aggregations of sub-sets of Regional Districts. Occupational forecasts are being produced at the college region level. In the appendix there is a conversion table which outlines which Regional District belongs to which College Region.

The model is only as good as the input data assumptions. Our reliance on good quality data from COPS is very important. Users of the data who perceive any problems with the assumptions in the model or question the quality of any of the data series being used should contact BC STATS at [bcstats@gov.bc.ca](mailto:bcstats@gov.bc.ca).

May 2, 2006

## Appendix 2

### COPS INDUSTRY CONVERSION TO REPM

REPM INDUSTRY	COPS INDUSTRY	% of COPS INDUSTRY
ACC&FD	31 Accommodation and food services	100
AGRIC	1 Agriculture	100
BEVMFG	9 Food and Beverage Products	16
BUS_HI	25 Computer System Design Services	100
BUS_HI	24 Professional Business Services	50
BUS_HI	26 Other Professional Services	50
BUS_LO	27 Management, Administrative and Other Support	100
BUS_LO	24 Professional Business Services	50
BUS_LO	26 Other Professional Services	50
COMMUNICA	30 Information, culture and recreation	100
CONSTRUCT	8 Construction	100
EDUCATION	28 Educational Services	100
FIRE	23 Finance, Insurance, Real Estate and Leasing	100
FISHING	3 Fishing, Hunting and Trapping	100
FISHMFG	9 Food and Beverage Products	18
FOODMFG	9 Food and Beverage Products	66
FORESTLOG	2 Forestry and Logging with support activities	100
GOVT	33 Public administration	100
HEALTH	29 Health Care and Social Assistance	75
MINING	5 Mining (except Oil and Gas)	100
MINING	6 Support Activities for Mining and Oil and Gas Extraction	67
MINMFG	14 Manufactured Mineral Products	50
OTHMFG	12 Printing and Related Support Activities	100
OTHMFG	13 Rubber, Plastics and Chemicals	100
OTHMFG	14 Manufactured Mineral Products	50
OTHMFG	15 Metal Fabrication and Machinery (excluding electrical)	100
OTHMFG	16 Computer, Electronic and Electrical Products	100
OTHMFG	17 Motor Vehicle, Body, Trailer & Parts Manufacturing	100
OTHMFG	18 Other Transportation Equipment Manufacturing	100
OTHSERV	29 Health Care and Social Assistance	25
OTHSERV	32 Other services	100

## COPS INDUSTRY CONVERSION TO REPM

REPM INDUSTRY	COPS INDUSTRY	% of COPS INDUSTRY
PAPERPULP	11 Paper Manufacturing	100
PETROL	4 Oil and Gas Extraction	100
PETROL	6 Support Activities for Mining and Oil and Gas Extraction	33
PETROLMFG	19 Other Manufacturing	7
RETAIL	21 Retail Trade	100
TRANOTHER	22 Transportation and Warehousing	59
TRANRAIL	22 Transportation and Warehousing	5
TRANTRUCK	22 Transportation and Warehousing	31
TRANWATER	22 Transportation and Warehousing	5
UTILITIES	7 Utilities	100
WDOTHER	10 Wood Product Manufacturing	29
WDSAWMILLS	10 Wood Product Manufacturing	71
WHOLESALE	20 Wholesale Trade	100

## Appendix 3

### REGIONAL DISTRICT TO COLLEGE REGION CONVERSION FOR REPM

COLLEGE REGION	REGIONAL DISTRICT #	REGIONAL DISTRICT NAME	% of REGIONAL DISTRICT
CAMOSUN	17	Capital	100
FRASER VALLEY	9	Fraser Valley	100
LOWER MAINLAND	15	Greater Vancouver	100
LOWER MAINLAND	29	Sunshine Coast	100
LOWER MAINLAND	31	Squamish Lillooet	87
MALASPINA	19	Cowichan Valley	100
MALASPINA	21	Nanaimo	100
MALASPINA	27	Powell River	100
NEW CALEDONIA	41	Cariboo	37
NEW CALEDONIA	51	Bulkley Nechako	61
NEW CALEDONIA	53	Fraser-Fort George	100
NORTH ISLAND	23	Alberni-Clayoquot	100
NORTH ISLAND	25	Comox Strathcona	100
NORTH ISLAND	43	Mount Waddington	100
NORTH ISLAND	45	Central Coast	100
NORTHERN LIGHTS	49	Kitimat Stikine	2
NORTHERN LIGHTS	55	Peace River	100
NORTHERN LIGHTS	57	Stikine	100
NORTHERN LIGHTS	59	Northern Rockies	100
NORTHWEST	47	Skeena-Queen Charlotte	100
NORTHWEST	49	Kitimat Stikine	98
NORTHWEST	51	Bulkley Nechako	39
OKANAGAN	7	Okanagan-Similkameen	100
OKANAGAN	35	Central Okanagan	100
OKANAGAN	37	North Okanagan	100
OKANAGAN	39	Columbia Shushwap	85
ROCKIES	1	East Kootenay	100
ROCKIES	3	Central Kootenays	20
ROCKIES	39	Columbia Shushwap	15
SELKIRK	3	Central Kootenays	80
SELKIRK	5	Kootenay Boundary	100
THOMPSON RIVERS	31	Squamish Lillooet	13
THOMPSON RIVERS	33	Thompson Nicola	100
THOMPSON RIVERS	41	Cariboo	63



## **Appendix 4**

### **Projected Annual Growth Rates in Occupational Demand (3-digit)**

# Selkirk College Region

## Projected Annual Growth Rates in Occupational Demand

	Estimated Employment	Average Annual % Change			Avg Annual % Chg Over 4 Years
	<u>2005</u>	<u>2007/2005</u>	<u>2009/2007</u>	<u>2010/2009</u>	<u>2009/2005</u>
All occupations	36,829	1.5	2.0	2.2	1.8
A01.001 Legislators and Senior Management	426	1.3	2.0	1.7	1.6
A11.011 Administrative Services Managers	261	1.2	1.5	2.4	1.4
A12.021 Managers in Engineering, Architecture, Science & Information Systems	124	1.2	1.6	2.0	1.4
A13.061 Sales, Marketing and Advertising Managers	242	1.2	1.8	3.0	1.5
A14.072 Facility Operation and Maintenance Managers	105	1.2	1.7	2.2	1.5
A21.062 Managers in Retail Trade	888	1.4	0.9	4.8	1.1
A22.063 Managers in Food Service and Accommodation	523	2.5	3.5	7.0	3.1
A30.012 Managers in Financial and Business Services	204	1.1	0.6	3.7	0.9
A31.013 Managers in Communication (Except Broadcasting)	20	1.5	1.7	1.2	1.7
A32.031 Managers in Health, Education, Social and Community Services	208	1.0	0.7	1.1	0.8
A33.041 Managers in Public Administration	26	0.6	0.7	1.2	0.6
A34.051 Managers in Art, Culture, Recreation and Sport	36	1.2	1.3	1.6	1.3
A35.064 Managers in Protective Service	31	0.2	0.3	0.3	0.3
A36.065 Managers in Other Services	49	1.2	1.5	3.0	1.3
A37.071 Managers in Construction and Transportation	469	2.5	6.9	-4.7	4.9
A38.081 Managers in Primary Production (Except Agriculture)	70	1.4	0.4	0.4	0.9
A39.091 Managers in Manufacturing and Utilities	179	1.0	1.2	3.3	1.1
B01.111 Auditors, Accountants and Investment Professionals	732	1.2	1.2	2.8	1.2
B02.112 Human Resources and Business Service Professionals	206	1.0	1.2	2.0	1.2
B11.123 Finance and Insurance Administrative Occupations	548	1.3	1.9	2.0	1.6
B21.124 Secretaries, Records and Transcriptionists	781	1.4	1.9	1.5	1.7
B31.122 Administrative and Regulatory Occupations	609	1.3	1.9	1.7	1.6
B41.121 Clerical Supervisors	120	1.1	1.0	2.6	1.1
B51.141 Clerical Occupations, General Office Skills	977	1.4	1.7	2.2	1.6
B52.142 Office Equipment Operators	101	1.1	1.3	2.3	1.2
B53.143 Finance and Insurance Clerks	680	1.1	1.0	3.0	1.1
B54.144 Administrative Support Clerks	189	1.3	1.4	2.1	1.3
B55.145 Library Correspondence and Related Information Clerks	320	1.1	1.0	2.6	1.0

# Selkirk College Region

## Projected Annual Growth Rates in Occupational Demand

	Estimated Employment	Average Annual % Change			Avg Annual % Chg Over 4 Years
	<u>2005</u>	<u>2007/2005</u>	<u>2009/2007</u>	<u>2010/2009</u>	<u>2009/2005</u>
B56.146 Mail and Message Distribution Occupations	139	2.1	1.9	2.6	2.0
B57.147 Recording, Scheduling and Distributing Occupations	371	1.1	1.3	2.9	1.2
C01.211 Physical Science Professionals	63	1.2	1.2	1.5	1.2
C02.212 Life Science Professionals	150	1.2	0.7	1.4	0.9
C03.213 Civil, Mechanical, Electrical and Chemical Engineers	246	1.3	2.2	1.3	1.8
C04.214 Other Engineers	140	1.1	1.5	1.8	1.3
C05.215 Architects, Urban Planners and Land Surveyors	100	1.4	2.5	1.0	2.0
C06.216 Mathematicians, Statisticians and Actuaries	-	-	-	-	-
C07.217 Computer and Information Systems Professionals	554	1.2	1.5	2.3	1.3
C11.221 Technical Occupations in Physical Sciences	73	0.9	0.8	0.9	0.9
C12.222 Technical Occupations in Life Sciences	194	1.1	0.5	0.9	0.8
C13.223 Technical Occupations in Civil, Mechanical & Industrial Engineering	112	2.0	4.8	-2.0	3.5
C14.224 Technical Occupations in Electronics and Electrical Engineering	201	1.2	1.8	1.9	1.5
C15.225 Technical Occupations in Architecture, Drafting, Surveying & Mapping	149	1.2	1.9	1.6	1.6
C16.226 Other Technical Inspectors and Regulatory Officers	75	1.3	2.1	0.5	1.7
C17.227 Transportation Officers and Controllers	75	2.8	2.2	1.8	2.6
C18.228 Technical Occupations in Computer and Information Systems	185	1.1	1.2	2.4	1.2
D01.311 Physicians Dentists and Veterinarians	268	2.4	2.4	3.5	2.5
D02.312 Optometrists, Chiropractors & Other Health Diagnosing/Treating Profs.	36	2.4	2.4	3.6	2.5
D03.313 Pharmacists, Dietitians and Nutritionists	89	1.8	1.3	4.5	1.6
D04.314 Therapy and Assessment Professionals	124	2.3	2.3	3.4	2.4
D11.315 Nurse Supervisors and Registered Nurses	605	2.4	2.4	3.5	2.5
D21.321 Medical Technologists and Technicians (Except Dental Health)	213	2.2	2.3	3.4	2.3
D22.322 Technical Occupations in Dental Health Care	61	2.2	2.4	4.1	2.4
D23.323 Other Technical Occupations in Health Care (Except Dental)	281	2.2	2.2	3.4	2.2
D31.341 Assisting Occupations in Support of Health Services	574	2.3	2.3	3.6	2.4
E01.411 Judges, Lawyers and Quebec Notaries	183	1.1	1.6	2.3	1.4
E02.415 Psychologists, Social Workers, Counsellors, Clergy & Probation Officers	319	1.7	1.7	3.3	1.8
E03 Policy and program officers researchers and consultants	275	1.1	1.3	2.0	1.2
E11.412 University Professors and Assistants	195	0.1	-0.6	-0.7	-0.2

# Selkirk College Region

## Projected Annual Growth Rates in Occupational Demand

	Estimated Employment	Average Annual % Change			Avg Annual % Chg Over 4 Years
	<u>2005</u>	<u>2007/2005</u>	<u>2009/2007</u>	<u>2010/2009</u>	<u>2009/2005</u>
E12.413 College and Other Vocational Instructors	233	0.2	-0.4	-0.3	-0.1
E13.414 Secondary and Elementary School Teachers & Educational Counsellors	1,041	0.1	-0.6	-0.7	-0.3
E21.421 Paralegals, Social Services Workers & Occupations in Education & Religion n.e.c.	856	1.8	1.7	2.7	1.8
F01 Librarians, archivists, conservators and curators	24	1.1	1.2	0.9	1.2
F02.512 Writing, Translating and Public Relations Professionals	152	1.2	1.3	1.8	1.2
F03.513 Creative and Performing Artists	199	0.8	0.5	0.5	0.7
F11.521 Technical Occupations in Libraries, Archives Museums & Art Galleries	35	1.0	0.9	0.4	1.0
F12.522 Photographers, Graphic Arts Technicians & Technical & coordinating Occupations in Motion Pictures Broadcasting & Performing	100	1.3	1.5	1.7	1.4
F13.523 Announcers and Other Performers	22	1.5	1.6	2.3	1.6
F14.524 Creative Designers and Craftspersons	211	1.2	1.7	3.1	1.5
F15.525 Athletes, Coaches, Referees and Related Occupations	154	1.0	0.9	1.3	0.9
G01.621 Sales and Service Supervisors	248	1.9	2.0	5.4	2.0
G11.641 Sales Representatives, Wholesale Trade	245	1.0	1.7	3.4	1.4
G12.622 Technical Sales Specialists, Wholesale Trade	81	1.1	2.0	3.1	1.6
G13.623 Insurance and Real Estate Sales Occupations and Buyers	173	1.2	0.7	3.9	0.9
G21.642 Retail Salespersons and Sales Clerks	1,433	1.4	0.8	4.9	1.1
G31.661 Cashiers	651	1.5	1.0	5.3	1.3
G41.624 Chefs and Cooks	655	2.5	3.4	6.6	3.0
G51.645 Occupations in Food and Beverage Service	825	2.5	3.5	7.0	3.1
G61.626 Police Officers and Fire-fighters	162	0.2	0.4	0.3	0.3
G62.646 Other Occupations in Protective Service	132	0.4	0.6	0.9	0.5
G63.665 Security Guards and Related Occupations	56	1.3	1.3	3.2	1.3
G71.643 Occupations in Travel and Accommodation	163	2.7	3.1	4.7	3.0
G72.644 Tour and Recreational Guides and Casino Occupations	45	1.7	1.8	2.2	1.8
G73.667 Other Occupations in Travel Accommodation, Amusement & Recreation	45	1.9	2.2	3.4	2.1
G81.647 Childcare and Home Support Workers	781	1.4	1.2	2.6	1.3
G91.627 Technical Occupations in Personal Service	192	1.1	1.0	4.7	1.0
G92.648 Other Occupations in Personal Service	105	1.1	1.0	4.5	1.1

# Selkirk College Region

## Projected Annual Growth Rates in Occupational Demand

	Estimated Employment	Average Annual % Change			Avg Annual % Chg Over 4 Years
	<u>2005</u>	<u>2007/2005</u>	<u>2009/2007</u>	<u>2010/2009</u>	<u>2009/2005</u>
G93.666 Cleaners	661	1.7	2.0	3.6	1.9
G94.625 Butchers and Bakers	169	1.9	1.2	4.6	1.6
G96.664 Food Counter Attendants, Kitchen Helpers & Related Occupations	826	2.5	3.3	6.6	3.0
G97.662 Other Sales and Related Occupations	543	1.4	0.7	5.0	1.0
G98.668 Other Elemental Service Occupations	103	1.5	1.6	4.4	1.6
H01.721 Contractors and Supervisors, Trades and Related Workers	347	2.3	5.8	-3.4	4.2
H02.722 Supervisors, Railway and Motor Transportation Occupations	14	1.5	1.9	1.5	1.7
H11.725 Plumbers, Pipefitters and Gas Fitters	254	2.4	6.0	-4.1	4.3
H12.727 Carpenters and Cabinetmakers	648	2.6	6.9	-4.5	4.9
H13.728 Masonry and Plastering Trades	251	2.8	7.5	-5.4	5.4
H14.729 Other Construction Trades	413	2.8	7.3	-5.0	5.2
H21.724 Electrical Trades and Telecommunications Occupations	456	2.0	4.6	-2.4	3.4
H22.735 Stationary Engineers and Power Station and System Operators	67	1.1	0.9	1.3	1.0
H31.723 Machinists and Related Occupations	80	0.8	1.1	3.4	1.0
H32.726 Metal Forming, Shaping and Erecting Trades	386	1.4	3.0	-0.2	2.2
H41.731 Machinery & Transportation Equipment Mechanics (Except Motor Vehicle)	517	1.3	1.9	1.1	1.6
H42.732 Automotive service technicians	346	1.1	1.0	4.3	1.1
H43.733 Other Mechanics	56	1.3	1.8	3.3	1.6
H51.734 Upholsterers, Tailors, Shoe Repairers, Jewellers & Related Occupations	62	1.1	1.3	5.3	1.2
H52.738 Printing Press Operators, Commercial Divers & Other Trades & Related Occupations n.e.c.	73	0.8	1.4	4.5	1.1
H53.744 Other installers repairers and servicers	171	1.9	3.8	-0.3	2.9
H61.742 Heavy Equipment Operators	294	2.2	4.9	-3.1	3.7
H62.737 Crane Operators Drillers and Blasters	93	1.4	3.1	-1.8	2.3
H71.741 Motor Vehicle and Transit Drivers	894	0.3	1.7	1.4	1.0
H72.736 Train Crew Operating Occupations	13	4.5	2.7	1.7	3.7
H73.743 Other Transport Equipment Operators and Related Workers	60	3.0	2.4	1.9	2.8
H81.745 Longshore Workers and Material Handlers	389	0.9	1.3	2.9	1.1
H82.761 Trades Helpers and Labourers	375	2.7	6.9	-4.6	5.0

# Selkirk College Region

## Projected Annual Growth Rates in Occupational Demand

	Estimated Employment	Average Annual % Change			Avg Annual % Chg Over 4 Years
	<u>2005</u>	<u>2007/2005</u>	<u>2009/2007</u>	<u>2010/2009</u>	<u>2009/2005</u>
H83.762 Public Works and Other Labourers n.e.c.	44	1.2	2.5	-0.5	1.8
I01.825 Contractors, Operators & Supervisors in Agriculture, Horticulture & Aquaculture	458	0.9	0.5	4.0	0.7
I02.843 Agriculture and Horticulture Workers	378	0.9	0.4	4.2	0.7
I11.821 Supervisors, Logging and Forestry	65	1.4	0.1	0.7	0.7
I12.822 Supervisors, Mining Oil and Gas	22	1.5	1.2	0.3	1.4
I13.823 Underground Miners, Oil and Gas Drillers and Related Workers	20	1.4	1.0	0.6	1.2
I14.841 Mine Service Workers and Operators in Oil and Gas Drilling	17	2.0	1.9	-1.0	2.0
I15.824 Logging Machinery Operators	112	1.5	0.1	0.2	0.8
I16.842 Logging and Forestry Workers	179	1.7	-0.2	-0.5	0.7
I17.826 Fishing Vessel Masters and Skippers and Fishermen/women	-	-	-	-	-
I18.844 Other Fishing and Trapping Occupations	-	-	-	-	-
I21.861 Primary Production Labourers	348	1.4	0.6	1.2	1.0
J01.921 Supervisors, Processing Occupations	199	0.8	0.8	2.3	0.8
J02.922 Supervisors, Assembly and Fabrication	36	0.9	1.5	3.5	1.2
J11.923 Central Control & Process Operators in Manufacturing & Processing	110	1.1	0.7	0.0	0.9
J12.941 Machine Operators & Related Workers in Metal & Mineral Products Processing	249	0.6	0.5	0.5	0.5
J13.942 Machine Operators & Related Workers in Chemical, Plastic & Rubber Processing	36	0.8	0.7	1.1	0.8
J14.943 Machine Operators & Related Workers in Pulp & Paper Production & Wood Processing	437	0.6	0.9	4.5	0.8
J15.944 Machine Operators and Related Workers in Textile Processing	-	-	-	-	-
J16.945 Machine Operators and Related Workers in Fabric, Fur & Leather Products Manufacturing	50	1.1	1.6	6.4	1.4
J17.946 Machine Operators & Related Workers in Food, Beverage & Tobacco Processing	53	2.9	1.6	1.7	2.3
J18.947 Printing Machine Operators and Related Occupations	58	1.1	1.2	5.0	1.2
J19.951 Machining, Metalworking, Woodworking & Related Machine Operators	106	0.6	0.8	2.4	0.7
J21.948 Mechanical Electrical and Electronics Assemblers	64	1.1	1.7	4.7	1.4

## Selkirk College Region

### Projected Annual Growth Rates in Occupational Demand

	Estimated Employment	Average Annual % Change			Avg Annual % Chg Over 4 Years
	<u>2005</u>	<u>2007/2005</u>	<u>2009/2007</u>	<u>2010/2009</u>	<u>2009/2005</u>
J22.949 Other Assembly and Related Occupations	151	1.1	2.1	3.8	1.6
J31.961 Labourers in Processing Manufacturing and Utilities	849	0.8	0.9	3.3	0.8

## **Appendix 5**

### **Projected Annual Growth Rates in Occupational Demand (4-digit)**



# Selkirk College Region

## Projected Annual Growth Rates in Occupational Demand

	Estimated Employment	Average Annual % Change			Avg Annual % Chg Over 4 Years
	<u>2005</u>	<u>2007/2005</u>	<u>2009/2007</u>	<u>2010/2009</u>	<u>2009/2005</u>
<b>All occupations</b>	36,829	1.5	2.0	2.2	1.8
<b>A Management occupations</b>	3,867	1.6	2.2	2.6	1.9
<b>A0 Senior management occupations</b>	428	1.3	2.0	1.7	1.6
<b>A01.001 Legislators and Senior Management</b>	426	1.3	2.0	1.7	1.6
<b>A011.0011 Legislators</b>	15	0.2	0.2	0.1	0.2
<b>A012.0012 Senior Government Managers and Officials</b>	41	0.4	0.5	0.5	0.5
<b>A013.0013 Senior Managers - Financial, Communications and Other     Business Services</b>	110	1.1	1.3	2.8	1.2
<b>A014.0014 Senior Managers - Health, Education, Social and Community     Services and Membership Organizations</b>	53	1.5	1.3	3.1	1.4
<b>A015.0015 Senior Managers - Trade, Broadcasting and Other Services     n.e.c.</b>	76	1.3	1.6	4.9	1.5
<b>A016.0016 Senior Managers - Goods Production, Utilities,     Transportation and Construction</b>	133	1.7	3.5	-0.9	2.7
<b>A1 Specialist managers</b>	736	1.2	1.6	2.5	1.4
<b>A11.011 Administrative Services Managers</b>	261	1.2	1.5	2.4	1.4
<b>A111.0111 Financial Managers</b>	127	1.3	1.5	2.5	1.4
<b>A112.0112 Human Resources Managers</b>	53	1.1	1.2	2.3	1.2
<b>A113.0113 Purchasing Managers</b>	14	1.3	1.6	3.2	1.5
<b>A114.0114 Other Administrative Services Managers</b>	65	1.3	1.7	2.2	1.5
<b>A12.021 Managers in Engineering, Architecture, Science and Information   Systems</b>	124	1.2	1.6	2.0	1.4
<b>A121.0211 Engineering Managers</b>	38	1.2	2.0	1.3	1.6
<b>A122.0213 Computer and Information Systems Managers</b>	73	1.1	1.4	2.4	1.3
<b>A123.0212 Architecture and Science Managers</b>	12	1.3	1.9	1.7	1.6
<b>A13.061 Sales, Marketing and Advertising Managers</b>	242	1.2	1.8	3.0	1.5
<b>A131.0611 Sales, Marketing and Advertising Managers</b>	243	1.2	1.8	3.0	1.5
<b>A14.072 Facility Operation and Maintenance Managers</b>	105	1.2	1.7	2.2	1.5
<b>A141.0721 Facility Operation and Maintenance Managers</b>	105	1.2	1.6	2.3	1.5

# Selkirk College Region

## Projected Annual Growth Rates in Occupational Demand

	Estimated Employment	Average Annual % Change			Avg Annual % Chg Over 4 Years
	<u>2005</u>	<u>2007/2005</u>	<u>2009/2007</u>	<u>2010/2009</u>	<u>2009/2005</u>
A2 Managers in retail trade, food and accommodation services	1,413	1.8	1.8	5.7	1.9
A21.062 Managers in Retail Trade	888	1.4	0.9	4.8	1.1
A211.0621 Retail Trade Managers	890	1.4	0.9	4.8	1.1
A22.063 Managers in Food Service and Accommodation	523	2.5	3.5	7.0	3.1
A221.0631 Restaurant and Food Service Managers	390	2.5	3.5	7.0	3.1
A222.0632 Accommodation Service Managers	133	2.5	3.5	7.0	3.1
A3 Other managers n.e.c.	1,293	1.6	3.1	-0.5	2.4
A30.012 Managers in Financial and Business Services	204	1.1	0.6	3.7	0.9
A301.0121 Insurance, Real Estate and Financial Brokerage Managers	53	1.2	1.0	3.0	1.1
A302.0122 Banking, Credit and Other Investment Managers	133	1.0	0.3	4.2	0.6
A303.0123 Other Business Services Managers	18	1.3	2.1	2.2	1.8
A31.013 Managers in Communication (Except Broadcasting)	20	1.5	1.7	1.2	1.7
A311.0131 Telecommunication Carriers Managers	18	1.4	1.6	1.0	1.5
A312.0132 Postal and Courier Services Managers	-	-	-	-	-
A32.031 Managers in Health, Education, Social and Community Services	208	1.0	0.7	1.1	0.8
A321.0311 Managers in Health Care	60	2.3	2.4	3.4	2.4
A322.0312 Administrators - Post-Secondary Education and Vocational Training	43	0.2	-0.5	-0.6	-0.1
A323.0313 School Principals and Administrators of Elementary and Secondary Education	75	0.1	-0.6	-0.7	-0.2
A324.0314 Managers in Social, Community and Correctional Services	31	1.7	1.8	3.2	1.8
A33.041 Managers in Public Administration	26	0.6	0.7	1.2	0.6
A331.0411 Government Managers - Health and Social Policy Development and Program Administration	-	-	-	-	-
A332.0412 Government Managers - Economic Analysis, Policy Development and Program Administration	-	-	-	-	-
A333.0413 Government Managers - Education Policy Development and Program Administration	-	-	-	-	-
A334.0414 Other Managers in Public Administration	-	-	-	-	-
A34.051 Managers in Art, Culture, Recreation and Sport	36	1.2	1.3	1.6	1.3

# Selkirk College Region

## Projected Annual Growth Rates in Occupational Demand

	Estimated Employment	Average Annual % Change			Avg Annual % Chg Over 4 Years
	<u>2005</u>	<u>2007/2005</u>	<u>2009/2007</u>	<u>2010/2009</u>	<u>2009/2005</u>
A341.0511 Library, Archive, Museum and Art Gallery Managers	-	-	-	-	-
A342.0512 Managers - Publishing, Motion Pictures, Broadcasting and Performing Arts	13	1.4	1.6	1.5	1.5
A343.0513 Recreation and Sports Program and Service Directors	17	1.2	1.1	1.6	1.1
A35.064 Managers in Protective Service	31	0.2	0.3	0.3	0.3
A351.0641 Commissioned Police Officers	-	-	-	-	-
A352.0642 Fire Chiefs and Senior Fire-fighting Officers	-	-	-	-	-
A353.0643 Commissioned Officers, Armed Forces	20	0.2	0.3	0.3	0.3
A36.065 Managers in Other Services	49	1.2	1.5	3.0	1.3
A361 0651 Other Services Managers	48	1.2	1.4	3.0	1.3
A37.071 Managers in Construction and Transportation	469	2.5	6.9	-4.7	4.9
A371.0711 Construction Managers	284	2.9	7.6	-5.4	5.4
A372.0712 Residential Home Builders and Renovators	123	2.9	7.8	-5.6	5.6
A373.0713 Transportation Managers	59	0.4	1.7	1.5	1.1
A38.081 Managers in Primary Production (Except Agriculture)	70	1.4	0.4	0.4	0.9
A381.0811 Primary Production Managers (Except Agriculture)	72	1.4	0.4	0.4	0.9
A39.091 Managers in Manufacturing and Utilities	179	1.0	1.2	3.3	1.1
A391.0911 Manufacturing Managers	148	1.0	1.3	3.8	1.1
A392.0912 Utilities Managers	29	1.0	0.9	0.8	1.0
<b>B Business, finance and administrative occupations</b>	5,778	1.3	1.5	2.3	1.4
<b>B0 Professional occupations in business and finance</b>	940	1.1	1.2	2.6	1.2
<b>B01.111 Auditors, Accountants and Investment Professionals</b>	732	1.2	1.2	2.8	1.2
<b>B011.1111 Financial Auditors and Accountants</b>	455	1.2	1.7	2.2	1.5
<b>B012.1112 Financial and Investment Analysts</b>	58	1.1	0.7	3.1	0.9
<b>B013.1113 Securities Agents, Investment Dealers and Brokers</b>	73	1.0	0.2	4.1	0.6
<b>B014.1114 Other Financial Officers</b>	147	1.0	0.4	3.9	0.7
<b>B02.112 Human Resources and Business Service Professionals</b>	206	1.0	1.2	2.0	1.2
<b>B021.1121 Specialists in Human Resources</b>	94	0.9	0.8	2.0	0.9
<b>B022.1122 Professional Occupations in Business Services to Management</b>	111	1.2	1.6	2.1	1.4

# Selkirk College Region

## Projected Annual Growth Rates in Occupational Demand

	Estimated Employment	Average Annual % Change			Avg Annual % Chg Over 4 Years
	<u>2005</u>	<u>2007/2005</u>	<u>2009/2007</u>	<u>2010/2009</u>	<u>2009/2005</u>
<b>B1 Finance and insurance administration occupations</b>	549	1.3	1.9	2.0	1.6
<b>B11.123 Finance and Insurance Administrative Occupations</b>	548	1.3	1.9	2.0	1.6
B111.1231 Bookkeepers	386	1.5	2.5	1.4	2.0
B112.1232 Loan Officers	48	1.0	0.2	4.0	0.6
B113.1233 Insurance Adjusters and Claims Examiners	73	1.0	0.3	3.9	0.6
B114.1234 Insurance Underwriters	21	1.0	0.2	3.6	0.6
B115.1235 Assessors, Valuers and Appraisers	14	0.6	0.7	1.3	0.6
B116.1236 Customs, Ship and Other Brokers	-	-	-	-	-
<b>B2 Secretaries</b>	782	1.4	1.9	1.5	1.7
<b>B21.124 Secretaries, Records and Transcriptionists</b>	781	1.4	1.9	1.5	1.7
B211.1241 Secretaries (Except Legal and Medical)	532	1.2	1.9	0.8	1.5
B212.1242 Legal Secretaries	133	1.2	1.7	2.4	1.5
B213.1243 Medical Secretaries	103	2.4	2.4	3.5	2.5
B214.1244 Court Recorders and Medical Transcriptionists	12	2.2	2.2	3.2	2.3
<b>B3 Administrative and regulatory occupations</b>	611	1.3	1.9	1.7	1.6
<b>B31.122 Administrative and Regulatory Occupations</b>	609	1.3	1.9	1.7	1.6
B311.1221 Administrative Officers	391	1.4	2.1	1.7	1.8
B312.1222 Executive Assistants	50	1.2	1.5	1.8	1.4
B313.1223 Personnel and Recruitment Officers	19	1.2	1.3	1.7	1.2
B314.1224 Property Administrators	26	1.7	3.3	0.1	2.6
B315.1225 Purchasing Agents and Officers	50	1.2	1.7	2.6	1.5
B316.1226 Conference and Event Planners	22	1.2	1.3	2.8	1.3
B317.1227 Court Officers and Justices of the Peace	-	-	-	-	-
B318.1228 Immigration, Employment Insurance and Revenue Officers	38	0.2	0.3	0.3	0.3
<b>B4 Clerical supervisors</b>	118	1.1	1.1	2.6	1.1
<b>B41.121 Clerical Supervisors</b>	120	1.1	1.0	2.6	1.1
B411.1211 Supervisors, General Office & Administrative Support Clerks	34	1.0	1.0	1.7	1.0
B412.1212 Supervisors, Finance and Insurance Clerks	38	1.1	0.7	3.2	0.9
B413.1213 Supervisors, Library Correspondence and Related Information	15	0.8	0.7	1.8	0.8
B414.1214 Supervisors, Mail and Message Distribution Occupations	-	-	-	-	-

# Selkirk College Region

## Projected Annual Growth Rates in Occupational Demand

	Estimated Employment	Average Annual % Change			Avg Annual % Chg Over 4 Years
	<u>2005</u>	<u>2007/2005</u>	<u>2009/2007</u>	<u>2010/2009</u>	<u>2009/2005</u>
B415.1215 Supervisors, Recording, Distributing and Scheduling Occupations	23	1.2	1.5	3.7	1.4
B5 Clerical occupations	2,780	1.3	1.4	2.5	1.3
B51.141 Clerical Occupations, General Office Skills	977	1.4	1.7	2.2	1.6
B511.1411 General Office Clerks	607	1.3	1.6	1.7	1.5
B513.1413 Records Management and Filing Clerks	50	1.5	1.5	2.7	1.5
B514.1414 Receptionists and Switchboard Operators	319	1.7	1.9	3.1	1.8
B52.142 Office Equipment Operators	101	1.1	1.3	2.3	1.2
B522.1422 Data Entry Clerks	82	1.1	1.2	2.3	1.2
B523.1423 Desktop Publishing Operators and Related Occupations	-	-	-	-	-
B524.1424 Telephone Operators	12	1.3	1.4	1.9	1.4
B53.143 Finance and Insurance Clerks	680	1.1	1.0	3.0	1.1
B531.1431 Accounting and Related Clerks	294	1.2	1.7	2.2	1.5
B532.1432 Payroll Clerks	80	1.2	1.4	1.7	1.3
B533.1433 Customer Service Representatives - Financial Services	216	1.0	0.2	4.2	0.6
B534.1434 Banking, Insurance and Other Financial Clerks	71	1.0	0.3	3.9	0.7
B535.1435 Collectors	23	0.9	0.6	2.8	0.8
B54.144 Administrative Support Clerks	189	1.3	1.4	2.1	1.3
B541.1441 Administrative Clerks	157	1.3	1.5	2.1	1.4
B542.1442 Personnel Clerks	24	1.3	1.2	2.2	1.2
B543.1443 Court Clerks	-	-	-	-	-
B55.145 Library, Correspondence and Related Information Clerks	320	1.1	1.0	2.6	1.0
B551.1451 Library Clerks	18	1.1	0.9	0.7	1.0
B552.1452 Correspondence, Publication and Related Clerks	-	-	-	-	-
B553.1453 Customer Service, Information and Related Clerks	239	1.2	1.1	3.1	1.2
B554.1454 Survey Interviewers and Statistical Clerks	58	0.4	0.6	0.8	0.5
B56.146 Mail and Message Distribution Occupations	139	2.1	1.9	2.6	2.0
B561.1461 Mail, Postal and Related Clerks	51	2.1	2.0	2.2	2.1
B562.1462 Letter Carriers	41	2.8	2.6	2.0	2.8
B563.1463 Couriers, Messengers and Door-to-Door Distributors	47	1.3	1.1	3.5	1.2

# Selkirk College Region

## Projected Annual Growth Rates in Occupational Demand

	Estimated Employment	Average Annual % Change			Avg Annual % Chg Over 4 Years
	<u>2005</u>	<u>2007/2005</u>	<u>2009/2007</u>	<u>2010/2009</u>	<u>2009/2005</u>
B57.147 Recording, Scheduling and Distributing Occupations	371	1.1	1.3	2.9	1.2
B571.1471 Shippers and Receivers	184	1.1	1.3	3.2	1.2
B572.1472 Storekeepers and Parts Clerks	49	1.2	1.0	4.1	1.1
B573.1473 Production Clerks	27	1.0	1.1	2.0	1.0
B574.1474 Purchasing and Inventory Clerks	51	1.3	1.3	3.6	1.3
B575.1475 Dispatchers and Radio Operators	56	0.6	1.8	0.7	1.2
B576.1476 Transportation Route and Crew	-	-	-	-	-
<b>C Natural and applied sciences and related occupations</b>	2,326	1.3	1.7	1.5	1.5
<b>C0 Professional occupations in natural and applied sciences</b>	1,264	1.2	1.6	1.8	1.4
<b>C01.211 Physical Science Professionals</b>	63	1.2	1.2	1.5	1.2
C011.2111 Physicists and Astronomers	-	-	-	-	-
C012.2112 Chemists	20	1.2	1.4	2.1	1.3
C013.2113 Geologists, Geochemists and Geophysicists	30	1.3	1.2	0.9	1.2
C014.2114 Meteorologists	-	-	-	-	-
C015.2115 Other Professional Occupations in Physical Sciences	-	-	-	-	-
<b>C02.212 Life Science Professionals</b>	150	1.2	0.7	1.4	0.9
C021.2121 Biologists and Related Scientists	48	1.0	1.1	1.7	1.1
C022.2122 Forestry Professionals	94	1.2	0.5	1.1	0.9
C023.2123 Agricultural Representatives, Consultants and Specialists	-	-	-	-	-
<b>C03.213 Civil, Mechanical, Electrical and Chemical Engineers</b>	246	1.3	2.2	1.3	1.8
C031.2131 Civil Engineers	115	1.5	2.8	0.4	2.2
C032.2132 Mechanical Engineers	59	1.3	1.6	2.1	1.4
C033.2133 Electrical and Electronics Engineers	57	1.2	1.6	2.3	1.4
C034.2134 Chemical Engineers	17	1.2	1.2	1.4	1.2
<b>C04.214 Other Engineers</b>	140	1.1	1.5	1.8	1.3
C041.2141 Industrial and Manufacturing Engineers	25	0.9	1.1	1.3	1.0
C042.2142 Metallurgical and Materials Engineers	23	0.5	0.3	0.5	0.4
C043.2143 Mining Engineers	-	-	-	-	-
C044.2144 Geological Engineers	11	1.4	2.1	1.6	1.8
C045.2145 Petroleum Engineers	-	-	-	-	-

# Selkirk College Region

## Projected Annual Growth Rates in Occupational Demand

	Estimated Employment	Average Annual % Change			Avg Annual % Chg Over 4 Years
	<u>2005</u>	<u>2007/2005</u>	<u>2009/2007</u>	<u>2010/2009</u>	<u>2009/2005</u>
C046.2146 Aerospace Engineers	-	-	-	-	-
C047.2147 Computer Engineers (Except Software Engineers)	47	1.1	1.6	2.6	1.4
C048.2148 Other Professional Engineers n.e.c.	21	1.5	1.7	2.8	1.6
C05.215 Architects, Urban Planners and Land Surveyors	100	1.4	2.5	1.0	2.0
C051.2151 Architects	51	1.3	2.3	1.8	1.8
C052.2152 Landscape Architects	-	-	-	-	-
C053.2153 Urban and Land Use Planners	20	1.4	3.2	-1.4	2.3
C054.2154 Land Surveyors	23	1.4	2.5	1.1	2.0
C06.216 Mathematicians, Statisticians and Actuaries	-	-	-	-	-
C061.2161 Mathematicians, Statisticians and Actuaries	-	-	-	-	-
C07.217 Computer and Information Systems Professionals	554	1.2	1.5	2.3	1.3
C071.2171 Information Systems Analysts and Consultants	187	1.1	1.4	2.2	1.2
C072.2172 Database Analysts and Data Administrators	27	1.2	1.4	2.2	1.3
C073.2173 Software Engineers	70	1.2	1.7	2.6	1.5
C074.2174 Computer Programmers and Interactive Media Developers	195	1.2	1.5	2.4	1.3
C075.2175 Web Designers and Developers	74	1.2	1.7	2.3	1.4
C1 Technical occupations related to natural and applied sciences	1,062	1.4	1.8	1.2	1.6
C11.221 Technical Occupations in Physical Sciences	73	0.9	0.8	0.9	0.9
C111.2211 Chemical Technologists and Technicians	37	0.9	0.7	0.9	0.8
C112.2212 Geological and Mineral Technologists and Technicians	34	1.0	0.8	0.6	0.9
C113.2213 Meteorological Technicians	-	-	-	-	-
C12.222 Technical Occupations in Life Sciences	194	1.1	0.5	0.9	0.8
C121.2221 Biological Technologists and Technicians	36	0.8	0.8	2.0	0.8
C122.2222 Agricultural and Fish Products Inspectors	-	-	-	-	-
C123.2223 Forestry Technologists and Technicians	119	1.3	0.2	0.6	0.8
C124.2224 Conservation and Fishery Officers	15	0.5	0.5	0.7	0.5
C125.2225 Landscape and Horticultural Technicians and Specialists	17	1.2	1.6	1.1	1.4
C13.223 Technical Occupations in Civil, Mechanical and Industrial Engineering	112	2.0	4.8	-2.0	3.5
C131.2231 Civil Engineering Technologists and Technicians	26	1.4	2.8	-0.2	2.2

## Selkirk College Region

### Projected Annual Growth Rates in Occupational Demand

	Estimated Employment	Average Annual % Change			Avg Annual % Chg Over 4 Years
	<u>2005</u>	<u>2007/2005</u>	<u>2009/2007</u>	<u>2010/2009</u>	<u>2009/2005</u>
C132.2232 Mechanical Engineering Technologists and Technicians	18	1.5	2.9	1.3	2.2
C133.2233 Industrial Engineering and Manufacturing Technologists and Technicians	12	1.5	2.4	2.5	2.0
C134.2234 Construction Estimators	54	2.7	7.1	-4.7	5.1
C14.224 Technical Occupations in Electronics & Electrical Engineering	201	1.2	1.8	1.9	1.5
C141.2241 Electrical and Electronics Engineering Technologists and Technicians	59	1.1	1.5	2.6	1.3
C142.2242 Electronic Service Technicians (Household and Business Equipment)	101	1.3	2.1	1.9	1.8
C143.2243 Industrial Instrument Technicians and Mechanics	32	1.2	1.1	0.5	1.1
C144.2244 Aircraft Instrument Electrical and Avionics Mechanics, Technicians and Inspectors	-	-	-	-	-
C15.225 Technical Occupations in Architecture, Drafting, Surveying and Mapping	149	1.2	1.9	1.6	1.6
C151.2251 Architectural Technologists and Technicians	15	1.3	2.4	1.5	1.9
C152.2252 Industrial Designers	11	1.4	2.4	2.4	1.9
C153.2253 Drafting Technologists and Technicians	80	1.3	2.2	1.6	1.7
C154.2254 Land Survey Technologists and Technicians	-	-	-	-	-
C155.2255 Mapping and Related Technologists and Technicians	34	0.9	1.0	1.7	0.9
C16.226 Other Technical Inspectors and Regulatory Officers	75	1.3	2.1	0.5	1.7
C161.2261 Nondestructive Testers and Inspectors	-	-	-	-	-
C162.2262 Engineering Inspectors and Regulatory Officers	-	-	-	-	-
C163.2263 Inspectors in Public and Environmental Health and Occupational Health and Safety	32	1.3	1.7	1.1	1.6
C164.2264 Construction Inspectors	24	1.4	3.1	-1.0	2.3
C17.227 Transportation Officers and Controllers	75	2.8	2.2	1.8	2.6
C171.2271 Air Pilots, Flight Engineers and Flying Instructors	34	2.4	2.1	1.7	2.3
C172.2272 Air Traffic Control and Related Occupations	-	-	-	-	-
C173.2273 Deck Officers, Water Transport	19	3.3	2.3	1.8	2.9
C174.2274 Engineer Officers, Water Transport	-	-	-	-	-



# Selkirk College Region

## Projected Annual Growth Rates in Occupational Demand

	Estimated Employment	Average Annual % Change			Avg Annual % Chg Over 4 Years
	<u>2005</u>	<u>2007/2005</u>	<u>2009/2007</u>	<u>2010/2009</u>	<u>2009/2005</u>
C175.2275 Railway Traffic Controllers and Marine Traffic Regulators	-	-	-	-	-
C18.228 Technical Occupations in Computer and Information Systems	185	1.1	1.2	2.4	1.2
C181.2281 Computer and Network Operators and Web Technicians	99	1.1	1.2	2.3	1.1
C182.2282 User Support Technicians	74	1.1	1.1	2.4	1.1
C183.2283 Systems Testing Technicians	14	1.2	1.5	2.7	1.4
<b>D Health occupations</b>	2,251	2.3	2.3	3.6	2.3
<b>D0 Professional occupations in health</b>	516	2.2	2.2	3.6	2.3
<b>D01.311 Physicians Dentists and Veterinarians</b>	268	2.4	2.4	3.5	2.5
D011.3111 Specialist Physicians	59	2.4	2.5	3.5	2.5
D012.3112 General Practitioners and Family Physicians	127	2.4	2.5	3.6	2.5
D013.3113 Dentists	64	2.4	2.5	3.6	2.5
D014.3114 Veterinarians	18	1.2	1.7	2.4	1.5
<b>D02.312 Optometrists, Chiropractors and Other Health Diagnosing and     Treating Professionals</b>	36	2.4	2.4	3.6	2.5
D021.3121 Optometrists	-	-	-	-	-
D022.3122 Chiropractors	18	2.4	2.5	3.6	2.5
D023.3123 Other Professional Occupations in Health Diagnosing and Treating	-	-	-	-	-
<b>D03.313 Pharmacists, Dietitians and Nutritionists</b>	89	1.8	1.3	4.5	1.6
D031.3131 Pharmacists	67	1.6	1.0	4.8	1.3
D032.3132 Dietitians and Nutritionists	22	2.3	2.3	3.6	2.3
<b>D04.314 Therapy and Assessment Professionals</b>	124	2.3	2.3	3.4	2.4
D041.3141 Audiologists and Speech-Language Pathologists	19	1.8	1.7	2.5	1.8
D042.3142 Physiotherapists	55	2.4	2.5	3.6	2.5
D043.3143 Occupational Therapists	30	2.4	2.4	3.5	2.5
D044.3144 Other Professional Occupations in Therapy and Assessment	20	2.3	2.2	3.3	2.3
<b>D1 Nurse supervisors and registered nurses</b>	605	2.4	2.4	3.5	2.5
<b>D11.315 Nurse Supervisors and Registered Nurses</b>	605	2.4	2.4	3.5	2.5
D111.3151 Head Nurses and Supervisors	20	2.3	2.4	3.5	2.4
D112.3152 Registered Nurses	582	2.4	2.4	3.5	2.5

# Selkirk College Region

## Projected Annual Growth Rates in Occupational Demand

	Estimated Employment	Average Annual % Change			Avg Annual % Chg Over 4 Years
	<u>2005</u>	<u>2007/2005</u>	<u>2009/2007</u>	<u>2010/2009</u>	<u>2009/2005</u>
D2 Technical and related occupations in health	557	2.2	2.2	3.5	2.3
D21.321 Medical Technologists and Technicians (Except Dental Health)	213	2.2	2.3	3.4	2.3
D211.3211 Medical Laboratory Technologists and Pathologists' Assistants	65	2.3	2.3	3.4	2.4
D212.3212 Medical Laboratory Technicians	51	2.3	2.3	3.4	2.4
D213.3213 Veterinary and Animal Health Technologists and Technicians	25	1.3	1.8	2.6	1.5
D214.3214 Respiratory Therapists, Clinical Perfusionists and Cardio- Pulmonary Technologists	15	2.4	2.4	3.6	2.4
D215.3215 Medical Radiation Technologists	35	2.4	2.4	3.6	2.5
D216.3216 Medical Sonographers	-	-	-	-	-
D217.3217 Cardiology Technologists	-	-	-	-	-
D218.3218 Electroencephalographic and Other Diagnostic Technologists n.e.c.	-	-	-	-	-
D219.3219 Other Medical Technologists and Technicians (Except Dental Health)	-	-	-	-	-
D22.322 Technical Occupations in Dental Health Care	61	2.2	2.4	4.1	2.4
D221.3221 Denturists	-	-	-	-	-
D222.3222 Dental Hygienists and Dental Therapists	40	2.4	2.5	3.6	2.5
D223.3223 Dental Technologists, Technicians and Laboratory Bench Workers	16	1.7	2.1	5.4	1.9
D23.323 Other Technical Occupations in Health Care (Except Dental)	281	2.2	2.2	3.4	2.2
D231.3231 Opticians	24	1.5	0.9	4.9	1.3
D232.3232 Midwives and Practitioners of Natural Healing	23	2.3	2.2	3.7	2.3
D233.3233 Licensed Practical Nurses	123	2.4	2.5	3.6	2.5
D234.3234 Ambulance Attendants and Other Paramedical Occupations	68	1.9	2.1	2.3	2.0
D235.3235 Other Technical Occupations in Therapy and Assessment	45	2.1	2.1	3.9	2.1
D3 Assisting occupations in support of health services	573	2.3	2.3	3.7	2.4
D31.341 Assisting Occupations in Support of Health Services	574	2.3	2.3	3.6	2.4
D311.3411 Dental Assistants	98	2.4	2.5	3.5	2.5
D312.3413 Nurse Aides, Orderlies and Patient Service Associates	356	2.4	2.4	3.5	2.5

# Selkirk College Region

## Projected Annual Growth Rates in Occupational Demand

	Estimated Employment	Average Annual % Change			Avg Annual % Chg Over 4 Years
	<u>2005</u>	<u>2007/2005</u>	<u>2009/2007</u>	<u>2010/2009</u>	<u>2009/2005</u>
D313.3414 Other Assisting Occupations in Support of Health Services	118	2.0	1.8	4.1	1.9
E Occupations in social science, education, government service & religion	3,100	0.9	0.6	1.2	0.8
E0 Judges, lawyers, psychologists, social workers, ministers of religion and policy and program officers	775	1.4	1.6	2.6	1.5
E01.411 Judges, Lawyers and Quebec Notaries	183	1.1	1.6	2.3	1.4
E011.4111 Judges	-	-	-	-	-
E012.4112 Lawyers and Quebec Notaries	177	1.2	1.7	2.4	1.4
E02.415 Psychologists, Social Workers, Counsellors, Clergy and Probation Officers	319	1.7	1.7	3.3	1.8
E021.4151 Psychologists	37	1.9	1.8	2.6	1.9
E022.4152 Social Workers	101	1.8	1.9	2.8	1.9
E023.4153 Family, Marriage and Other Related Counsellors	100	2.1	2.1	3.3	2.2
E024.4154 Ministers of Religion	71	1.1	1.0	4.6	1.1
E025.4155 Probation and Parole Officers and Related Occupations	13	0.5	0.6	0.8	0.6
E03 Policy and program officers, researchers and consultants	275	1.1	1.3	2.0	1.2
E031.4161 Natural and Applied Science Policy Researchers, Consultants and Program Officers	32	1.1	1.4	2.1	1.3
E032.4162 Economists and Economic Policy Researchers and Analysts	11	0.8	1.0	1.7	0.9
E033.4163 Business Development Officers and Marketing Researchers and Consultants	72	1.2	1.5	2.5	1.4
E034.4164 Social Policy Researchers, Consultants & Program Officers	44	1.1	1.3	2.0	1.2
E035.4166 Education Policy Researchers Consultants & Program Officers	29	0.4	0.0	0.0	0.2
E036.4167 Recreation, Sports and Fitness Program Supervisors and Consultants	32	1.5	1.5	2.5	1.6
E037.4168 Program Officers Unique to Government	11	0.2	0.3	0.3	0.3
E038.4169 Other Professional Occupations in Social Science	-	-	-	-	-
E039.4165 Health Policy Researchers, Consultants & Program Officers	34	1.6	1.8	2.8	1.7
E1 Teachers and professors	1,471	0.1	-0.6	-0.7	-0.2
E11.412 University Professors and Assistants	195	0.1	-0.6	-0.7	-0.2

# Selkirk College Region

## Projected Annual Growth Rates in Occupational Demand

	Estimated Employment	Average Annual % Change			Avg Annual % Chg Over 4 Years
	<u>2005</u>	<u>2007/2005</u>	<u>2009/2007</u>	<u>2010/2009</u>	<u>2009/2005</u>
E111.4121 University Professors	98	0.1	-0.6	-0.8	-0.3
E112.4122 Post-Secondary Teaching and Research Assistants	96	0.2	-0.5	-0.6	-0.2
E12.413 College and Other Vocational Instructors	233	0.2	-0.4	-0.3	-0.1
E121.4131 College and Other Vocational Instructors	233	0.2	-0.4	-0.3	-0.1
E13.414 Secondary and Elementary School Teachers and Educational Counsellors	1,041	0.1	-0.6	-0.7	-0.3
E131.4141 Secondary School Teachers	412	0.1	-0.6	-0.8	-0.3
E132.4142 Elementary School and Kindergarten Teachers	574	0.1	-0.6	-0.8	-0.3
E133.4143 Educational Counsellors	55	0.2	-0.5	-0.6	-0.2
E2 Paralegals, social services workers and occupations in education and religion n.e.c.	856	1.8	1.7	2.7	1.8
E21.421 Paralegals, Social Services Workers and Occupations in Education and Religion n.e.c.	856	1.8	1.7	2.7	1.8
E211.4211 Paralegal and Related Occupations	75	1.1	1.6	2.3	1.4
E212.4212 Community and Social Service Workers	245	1.9	1.9	3.1	2.0
E213.4213 Employment Counsellors	34	1.5	1.4	2.4	1.5
E214.4215 Instructors and Teachers of Persons with Disabilities	25	0.9	0.5	0.8	0.7
E215.4216 Other Instructors	97	0.3	-0.3	-0.2	0.0
E216.4217 Other Religious Occupations	15	1.1	1.0	4.3	1.1
E217.4214 Early Childhood Educators and Assistants	364	2.3	2.3	3.4	2.4
F Occupations in art, culture, recreation and sport	897	1.1	1.2	1.7	1.1
F0 Professional Occupations in Art and Culture	372	1.0	0.9	1.1	0.9
F01 Librarians, archivists, conservators and curators	24	1.1	1.2	0.9	1.2
F011.5111 Librarians	17	1.1	1.0	0.9	1.1
F012.5112 Conservators and Curators	-	-	-	-	-
F013.5113 Archivists	-	-	-	-	-
F02.512 Writing, Translating and Public Relations Professionals	152	1.2	1.3	1.8	1.2
F021.5121 Authors and Writers	44	1.3	1.4	1.5	1.4
F022.5122 Editors	18	1.2	1.2	1.3	1.2
F023.5123 Journalists	13	1.4	1.3	1.1	1.4

## Selkirk College Region

### Projected Annual Growth Rates in Occupational Demand

	Estimated Employment	Average Annual % Change			Avg Annual % Chg Over 4 Years
	<u>2005</u>	<u>2007/2005</u>	<u>2009/2007</u>	<u>2010/2009</u>	<u>2009/2005</u>
F024.5124 Professional Occupations in Public Relations and Communications	57	1.1	1.2	2.3	1.1
F025.5125 Translators, Terminologists and Interpreters	21	1.1	1.5	2.0	1.3
F03.513 Creative and Performing Artists	199	0.8	0.5	0.5	0.7
F031.5131 Producers, Directors, Choreographers & Related Occupations	34	1.3	1.2	1.0	1.3
F032.5132 Conductors, Composers and Arrangers	-	-	-	-	-
F033.5133 Musicians and Singers	83	0.4	-0.1	-0.1	0.2
F034.5134 Dancers	20	0.3	-0.3	-0.3	0.0
F035.5135 Actors and Comedians	19	1.3	1.2	0.9	1.3
F036.5136 Painters, Sculptors and Other Visual Artists	37	1.2	1.1	1.1	1.1
F1 Technical occupations in art, culture, recreation and sport	522	1.2	1.4	2.1	1.3
F11.521 Technical Occupations in Libraries, Archives, Museums and Art Galleries	35	1.0	0.9	0.4	1.0
F111.5211 Library and Archive Technicians and Assistants	27	0.9	0.6	0.5	0.8
F112.5212 Technical Occupations Related to Museums and Art Galleries	-	-	-	-	-
F12.522 Photographers, Graphic Arts Technicians & Technical & coordinating Occupations in Motion Pictures, Broadcasting & Performing Arts	100	1.3	1.5	1.7	1.4
F121.5221 Photographers	33	1.2	1.7	2.5	1.5
F122.5222 Film and Video Camera Operators	-	-	-	-	-
F123.5223 Graphic Arts Technicians	-	-	-	-	-
F124.5224 Broadcast Technicians	-	-	-	-	-
F125.5225 Audio and Video Recording Technicians	12	1.3	1.3	1.5	1.3
F126.5226 Other Technical and Co-ordinating Occupations in Motion Pictures, Broadcasting and the Performing Arts	17	1.3	1.3	1.4	1.3
F127.5227 Support Occupations in Motion Pictures, Broadcasting and the Performing Arts	19	1.4	1.4	0.9	1.4
F13.523 Announcers and Other Performers	22	1.5	1.6	2.3	1.6
F131.5231 Announcers and Other Broadcasters	16	1.6	1.7	2.1	1.6
F132.5232 Other Performers	-	-	-	-	-
F14.524 Creative Designers and Craftspersons	211	1.2	1.7	3.1	1.5

# Selkirk College Region

## Projected Annual Growth Rates in Occupational Demand

	Estimated Employment	Average Annual % Change			Avg Annual % Chg Over 4 Years
	<u>2005</u>	<u>2007/2005</u>	<u>2009/2007</u>	<u>2010/2009</u>	<u>2009/2005</u>
F141.5241 Graphic Designers and Illustrators	96	1.2	1.7	2.7	1.5
F142.5242 Interior Designers	35	1.5	2.5	1.7	2.0
F143.5243 Theatre, Fashion, Exhibit and Other Creative Designers	20	1.3	1.5	2.9	1.4
F144.5244 Artisans and Craftspersons	58	1.2	1.3	4.5	1.2
F145.5245 Patternmakers - Textile, Leather and Fur Products	-	-	-	-	-
F15.525 Athletes, Coaches, Referees and Related Occupations	154	1.0	0.9	1.3	0.9
F151.5251 Athletes	-	-	-	-	-
F152.5252 Coaches	22	0.6	0.0	0.2	0.3
F153.5253 Sports Officials and Referees	11	1.3	1.2	2.0	1.2
F154.5254 Program Leaders and Instructors in Recreation and Sport	116	1.0	1.0	1.5	1.0
<b>G Sales and service occupations</b>	<b>8,291</b>	<b>1.7</b>	<b>1.8</b>	<b>4.9</b>	<b>1.8</b>
<b>G0 Sales and service supervisors</b>	<b>248</b>	<b>1.9</b>	<b>2.0</b>	<b>5.4</b>	<b>2.0</b>
<b>G01.621 Sales and Service Supervisors</b>	<b>248</b>	<b>1.9</b>	<b>2.0</b>	<b>5.4</b>	<b>2.0</b>
G011.6211 Retail Trade Supervisors	111	1.4	0.8	4.9	1.1
G012.6212 Food Service Supervisors	91	2.5	3.4	6.6	3.0
G013.6213 Executive Housekeepers	11	2.5	3.3	6.3	3.0
G014.6214 Dry Cleaning and Laundry Supervisors	-	-	-	-	-
G015.6215 Cleaning Supervisors	-	-	-	-	-
G016.6216 Other Service Supervisors	18	2.0	2.6	3.8	2.3
<b>G1 Wholesale, technical, insurance, real estate sales specialists and retail, wholesale and grain buyers</b>	<b>498</b>	<b>1.1</b>	<b>1.4</b>	<b>3.5</b>	<b>1.3</b>
<b>G11.641 Sales Representatives, Wholesale Trade</b>	<b>245</b>	<b>1.0</b>	<b>1.7</b>	<b>3.4</b>	<b>1.4</b>
G111.6411 Sales Representatives - Wholesale Trade (Non-Technical)	244	1.0	1.8	3.5	1.4
<b>G12.622 Technical Sales Specialists, Wholesale Trade</b>	<b>81</b>	<b>1.1</b>	<b>2.0</b>	<b>3.1</b>	<b>1.6</b>
G121.6221 Technical Sales Specialists - Wholesale Trade	80	1.1	2.0	3.0	1.6
<b>G13.623 Insurance and Real Estate Sales Occupations and Buyers</b>	<b>173</b>	<b>1.2</b>	<b>0.7</b>	<b>3.9</b>	<b>0.9</b>
G131.6231 Insurance Agents and Brokers	122	1.0	0.2	4.2	0.6
G132.6232 Real Estate Agents and Salespersons	-	-	-	-	-
G133.6233 Retail and Wholesale Buyers	42	1.3	1.1	4.5	1.2
G134.6234 Grain Elevator Operators	-	-	-	-	-

## Selkirk College Region

### Projected Annual Growth Rates in Occupational Demand

	Estimated Employment	Average Annual % Change			Avg Annual % Chg Over 4 Years
	<u>2005</u>	<u>2007/2005</u>	<u>2009/2007</u>	<u>2010/2009</u>	<u>2009/2005</u>
<b>G2 Retail salespersons and sales clerks</b>	1,430	1.4	0.8	4.9	1.1
<b>G21.642 Retail Salespersons and Sales Clerks</b>	1,433	1.4	0.8	4.9	1.1
<b>G211.6421 Retail Salespersons and Sales Clerks</b>	1,433	1.4	0.8	4.9	1.1
<b>G3 Cashiers</b>	651	1.5	1.0	5.3	1.3
<b>G31.661 Cashiers</b>	651	1.5	1.0	5.3	1.3
<b>G311.6611 Cashiers</b>	652	1.5	1.0	5.3	1.3
<b>G4 Chefs and cooks</b>	655	2.5	3.4	6.6	3.0
<b>G41.624 Chefs and Cooks</b>	655	2.5	3.4	6.6	3.0
<b>G411.6241 Chefs</b>	120	2.5	3.4	6.8	3.0
<b>G412.6242 Cooks</b>	535	2.5	3.3	6.6	3.0
<b>G5 Occupations in food and beverage service</b>	825	2.5	3.5	7.0	3.1
<b>G51.645 Occupations in Food and Beverage Service</b>	825	2.5	3.5	7.0	3.1
<b>G511.6451 Maîtres d'hôtel and Hosts/Hostesses</b>	74	2.5	3.4	6.9	3.1
<b>G512.6452 Bartenders</b>	111	2.4	3.4	6.9	3.0
<b>G513.6453 Food and Beverage Servers</b>	641	2.6	3.5	7.1	3.1
<b>G6 Occupations in protective services</b>	349	0.5	0.6	1.0	0.5
<b>G61.626 Police Officers and Fire-fighters</b>	162	0.2	0.4	0.3	0.3
<b>G611.6261 Police Officers (Except Commissioned)</b>	99	0.2	0.4	0.3	0.3
<b>G612.6262 Fire-fighters</b>	64	0.3	0.3	0.3	0.3
<b>G62.646 Other Occupations in Protective Service</b>	132	0.4	0.6	0.9	0.5
<b>G621.6461 Sheriffs and Bailiffs</b>	-	-	-	-	-
<b>G622.6462 Correctional Service Officers</b>	40	0.3	0.5	0.4	0.4
<b>G623.6463 By-law Enforcement and Other Regulatory Officers n.e.c.</b>	14	0.7	0.7	1.9	0.8
<b>G624.6464 Other Ranks Armed Forces</b>	47	0.2	0.3	0.3	0.3
<b>G625.6465 Other Protective Service Occupations</b>	21	1.1	0.9	2.8	1.0
<b>G63.665 Security Guards and Related Occupations</b>	56	1.3	1.3	3.2	1.3
<b>G631.6651 Security Guards and Related Occupations</b>	55	1.3	1.4	3.3	1.4
<b>G7 Occupations in travel and accommodation including attendants in recreation and sport</b>	253	2.3	2.7	4.1	2.6
<b>G71.643 Occupations in Travel and Accommodation</b>	163	2.7	3.1	4.7	3.0

# Selkirk College Region

## Projected Annual Growth Rates in Occupational Demand

	Estimated Employment	Average Annual % Change			Avg Annual % Chg Over 4 Years
	<u>2005</u>	<u>2007/2005</u>	<u>2009/2007</u>	<u>2010/2009</u>	<u>2009/2005</u>
G711.6431 Travel Counsellors	-	-	-	-	-
G712.6432 Purser and Flight Attendants	38	2.8	2.7	2.2	2.8
G713.6433 Airline Sales and Service Agents	31	2.7	2.6	2.1	2.8
G714.6434 Ticket Agents, Cargo Service Representatives and Related Clerks (Except Airline)	-	-	-	-	-
G715.6435 Hotel Front Desk Clerks	80	2.6	3.6	7.2	3.2
G72.644 Tour and Recreational Guides and Casino Occupations	45	1.7	1.8	2.2	1.8
G721.6441 Tour and Travel Guides	11	1.9	2.0	2.7	2.0
G722.6442 Outdoor Sport and Recreational Guides	13	2.0	2.2	3.6	2.1
G723.6443 Casino Occupations	21	1.5	1.4	1.0	1.5
G73.667 Other Occupations in Travel, Accommodation, Amusement and Recreation	45	1.9	2.2	3.4	2.1
G731.6671 Operators and Attendants in Amusement, Recreation and Sport	27	1.3	1.4	1.7	1.4
G732.6672 Other Attendants in Accommodation and Travel	18	2.7	3.3	5.8	3.1
G8 Childcare and home support workers	782	1.4	1.2	2.6	1.3
G81.647 Childcare and Home Support Workers	781	1.4	1.2	2.6	1.3
G811.6471 Visiting Homemakers, Housekeepers & Related Occupations	294	2.3	2.3	3.6	2.4
G812.6472 Elementary and Secondary School Teacher Assistants	237	0.1	-0.6	-0.7	-0.2
G814.6474 Babysitters, Nannies and Parents' Helpers	251	1.6	1.6	4.2	1.7
G9 Sales and service occupations n.e.c.	2,597	1.8	2.0	5.1	1.9
G91.627 Technical Occupations in Personal Service	192	1.1	1.0	4.7	1.0
G911.6271 Hairstylists and Barbers	185	1.1	1.0	4.7	1.0
G912.6272 Funeral Directors and Embalmers	-	-	-	-	-
G92.648 Other Occupations in Personal Service	105	1.1	1.0	4.5	1.1
G921.6481 Image, Social and Other Personal Consultants	-	-	-	-	-
G922.6482 Estheticians, Electrologists and Related Occupations	60	1.1	1.0	4.7	1.0
G923.6483 Pet Groomers and Animal Care Workers	33	1.1	1.0	4.4	1.1
G924.6484 Other Personal Service Occupations	-	-	-	-	-
G93.666 Cleaners	661	1.7	2.0	3.6	1.9



## Selkirk College Region

### Projected Annual Growth Rates in Occupational Demand

	Estimated Employment	Average Annual % Change			Avg Annual % Chg Over 4 Years
	<u>2005</u>	<u>2007/2005</u>	<u>2009/2007</u>	<u>2010/2009</u>	<u>2009/2005</u>
G931.6661 Light Duty Cleaners	281	2.3	2.9	5.4	2.7
G932.6662 Specialized Cleaners	60	1.4	1.8	3.2	1.6
G933.6663 Janitors, Caretakers and Building Superintendents	321	1.2	1.3	1.9	1.3
G94.625 Butchers and Bakers	169	1.9	1.2	4.6	1.6
G941.6251 Butchers and Meat Cutters - Retail and Wholesale	63	1.4	0.7	5.1	1.0
G942.6252 Bakers	106	2.2	1.6	4.3	1.9
G96.664 Food Counter Attendants, Kitchen Helpers and Related Occupations	826	2.5	3.3	6.6	3.0
G961.6641 Food Counter Attendants, Kitchen Helpers and Related Occupations	826	2.5	3.3	6.6	3.0
G97.662 Other Sales and Related Occupations	543	1.4	0.7	5.0	1.0
G971.6621 Service Station Attendants	85	1.3	0.6	5.1	1.0
G972.6622 Grocery Clerks and Store Shelf Stockers	338	1.3	0.6	5.2	1.0
G973.6623 Other Elemental Sales Occupations	118	1.4	1.0	4.6	1.2
G98.668 Other Elemental Service Occupations	103	1.5	1.6	4.4	1.6
G981.6681 Dry Cleaning and Laundry Occupations	52	1.7	1.8	4.6	1.8
G982.6682 Ironing, Pressing and Finishing Occupations	-	-	-	-	-
G983.6683 Other Elemental Service Occupations	42	1.4	1.4	4.1	1.4
H Trades, transport and equipment operators and related occupations	6,302	1.7	4.0	-1.3	2.9
H0 Contractors and supervisors in trades and transportation	360	2.3	5.6	-3.2	4.1
H01.721 Contractors and Supervisors, Trades and Related Workers	347	2.3	5.8	-3.4	4.2
H011.7211 Supervisors, Machinists and Related Occupations	13	0.8	0.9	1.9	0.8
H012.7212 Contractors and Supervisors, Electrical Trades and Telecommunications Occupations	36	2.3	5.9	-3.6	4.3
H013.7213 Contractors and Supervisors, Pipefitting Trades	21	2.4	5.9	-4.1	4.3
H014.7214 Contractors and Supervisors, Metal Forming, Shaping and Erecting Trades	32	1.3	2.7	-0.8	2.0
H015.7215 Contractors and Supervisors, Carpentry Trades	52	2.8	7.5	-5.1	5.3
H016.7216 Contractors and Supervisors, Mechanic Trades	33	1.5	2.3	1.9	1.9

# Selkirk College Region

## Projected Annual Growth Rates in Occupational Demand

	Estimated Employment	Average Annual % Change			Avg Annual % Chg Over 4 Years
	<u>2005</u>	<u>2007/2005</u>	<u>2009/2007</u>	<u>2010/2009</u>	<u>2009/2005</u>
H017.7217 Contractors and Supervisors, Heavy Construction Equipment Crews	80	2.7	6.6	-4.3	4.8
H018.7218 Supervisors, Printing and Related Occupations	-	-	-	-	-
H019.7219 Contractors and Supervisors, Other Construction Trades, Installers, Repairers and Servicers	74	2.9	7.6	-5.4	5.4
H02.722 Supervisors, Railway and Motor Transportation Occupations	14	1.5	1.9	1.5	1.7
H021.7221 Supervisors, Railway Transport Operations	-	-	-	-	-
H022.7222 Supervisors, Motor Transport & Other Ground Transit Operators	12	0.6	1.5	1.4	1.1
H1 Construction trades	1,564	2.7	7.0	-4.7	5.0
H11.725 Plumbers, Pipefitters and Gas Fitters	254	2.4	6.0	-4.1	4.3
H111.7251 Plumbers	143	2.7	7.2	-5.1	5.2
H112.7252 Steamfitters, Pipefitters and Sprinkler System Installers	83	1.9	4.2	-2.6	3.1
H113.7253 Gas Fitters	27	2.2	5.2	-3.1	3.8
H12.727 Carpenters and Cabinetmakers	648	2.6	6.9	-4.5	4.9
H121.7271 Carpenters	601	2.7	7.1	-4.9	5.1
H122.7272 Cabinetmakers	47	1.6	3.8	1.6	2.7
H13.728 Masonry and Plastering Trades	251	2.8	7.5	-5.4	5.4
H131.7281 Bricklayers	42	2.7	7.2	-5.2	5.2
H132.7282 Concrete Finishers	43	2.6	6.8	-4.8	4.9
H133.7283 Tilesetters	33	2.9	7.9	-5.7	5.6
H134.7284 Plasterers, Drywall Installers and Finishers and Lathers	134	2.9	7.7	-5.6	5.5
H14.729 Other Construction Trades	413	2.8	7.3	-5.0	5.2
H141.7291 Roofers and Shinglers	85	2.8	7.5	-5.4	5.4
H142.7292 Glaziers	36	2.4	5.8	-2.8	4.2
H143.7293 Insulators	26	2.9	7.4	-5.3	5.3
H144.7294 Painters and Decorators	198	2.8	7.4	-5.2	5.3
H145.7295 Floor Covering Installers	69	2.8	7.4	-5.1	5.3
H2 Stationary engineers, power station operators and electrical trades and telecommunications occupations	524	1.9	4.1	-2.0	3.1

## Selkirk College Region

### Projected Annual Growth Rates in Occupational Demand

	Estimated Employment	Average Annual % Change			Avg Annual % Chg Over 4 Years
	<u>2005</u>	<u>2007/2005</u>	<u>2009/2007</u>	<u>2010/2009</u>	<u>2009/2005</u>
H21.724 Electrical Trades and Telecommunications Occupations	456	2.0	4.6	-2.4	3.4
H211.7241 Electricians (Except Industrial and Power System)	230	2.6	6.7	-4.6	4.8
H212.7242 Industrial Electricians	104	1.4	2.5	0.4	2.0
H213.7243 Power System Electricians	16	1.2	1.6	-0.3	1.4
H214.7244 Electrical Power Line and Cable Workers	33	1.3	2.0	-0.5	1.7
H215.7245 Telecommunications Line and Cable Workers	22	1.9	3.7	-1.6	2.9
H216.7246 Telecommunications Installation and Repair Workers	37	1.5	2.1	0.6	1.9
H217.7247 Cable Television Service and Maintenance Technicians	12	2.0	3.7	-1.3	2.9
H22.735 Stationary Engineers and Power Station and System Operators	67	1.1	0.9	1.3	1.0
H221.7351 Stationary Engineers and Auxiliary Equipment Operators	53	1.2	0.9	1.3	1.1
H222.7352 Power Systems and Power Station Operators	14	0.9	0.8	1.0	0.9
H3 Machinists, metal forming, shaping and erecting occupations	468	1.3	2.6	0.4	2.0
H31.723 Machinists and Related Occupations	80	0.8	1.1	3.4	1.0
H311.7231 Machinists and Machining and Tooling Inspectors	72	0.8	1.1	3.4	1.0
H312.7232 Tool and Die Makers	-	-	-	-	-
H32.726 Metal Forming, Shaping and Erecting Trades	386	1.4	3.0	-0.2	2.2
H321.7261 Sheet Metal Workers	50	2.3	6.0	-3.0	4.3
H322.7262 Boilermakers	-	-	-	-	-
H323.7263 Structural Metal and Platework Fabricators and Fitters	47	0.8	1.3	2.5	1.0
H324.7264 Ironworkers	41	2.1	5.2	-3.2	3.7
H325.7266 Blacksmiths and Die Setters	-	-	-	-	-
H326.7265 Welders and Related Machine Operators	240	1.2	2.2	0.4	1.7
H4 Mechanics	916	1.2	1.6	2.4	1.4
H41.731 Machinery and Transportation Equipment Mechanics (Except Motor Vehicle)	517	1.3	1.9	1.1	1.6
H411.7311 Construction Millwrights and Industrial Mechanics (Except Textile)	247	0.9	1.2	2.0	1.1
H412.7312 Heavy-Duty Equipment Mechanics	162	1.2	1.5	1.1	1.4
H413.7313 Refrigeration and Air Conditioning Mechanics	37	2.2	5.5	-3.1	3.9
H414.7314 Railway Carmen/women	-	-	-	-	-

# Selkirk College Region

## Projected Annual Growth Rates in Occupational Demand

	Estimated Employment	Average Annual % Change			Avg Annual % Chg Over 4 Years
	<u>2005</u>	<u>2007/2005</u>	<u>2009/2007</u>	<u>2010/2009</u>	<u>2009/2005</u>
H415.7315 Aircraft Mechanics and Aircraft Inspectors	39	2.2	2.1	2.2	2.2
H416.7316 Machine Fitters	13	0.8	1.0	2.6	0.9
H417.7317 Textile Machinery Mechanics and Repairers	0	-	-	-	-
H418.7318 Elevator Constructors and Mechanics	16	2.9	7.8	-5.6	5.6
H42.732 Automotive service technicians	346	1.1	1.0	4.3	1.1
H421.7321 Automotive Service Technicians, Truck Mechanics and Mechanical Repairers	259	1.1	1.0	4.3	1.1
H422.7322 Motor Vehicle Body Repairers	83	1.1	1.0	4.7	1.1
H43.733 Other Mechanics	56	1.3	1.8	3.3	1.6
H431.7331 Oil and Solid Fuel Heating Mechanics	-	-	-	-	-
H432.7332 Electric Appliance Servicers and Repairers	27	1.2	1.5	3.3	1.4
H433.7333 Electrical Mechanics	-	-	-	-	-
H434.7334 Motorcycle and Other Related Mechanics	-	-	-	-	-
H435.7335 Other Small Engine and Equipment Mechanics	12	1.3	1.3	4.6	1.3
H5 Other trades n.e.c.	306	1.5	2.7	1.9	2.1
H51.734 Upholsterers, Tailors, Shoe Repairers, Jewellers and Related Occupations	62	1.1	1.3	5.3	1.2
H511.7341 Upholsterers	12	1.1	1.2	5.1	1.2
H512.7342 Tailors, Dressmakers, Furriers and Milliners	38	1.1	1.4	5.5	1.3
H513.7343 Shoe Repairers and Shoemakers	-	-	-	-	-
H514.7344 Jewellers, Watch Repairers and Related Occupations	-	-	-	-	-
H52.738 Printing Press Operators, Commercial Divers and Other Trades and Related Occupations n.e.c.	73	0.8	1.4	4.5	1.1
H521.7381 Printing Press Operators	24	1.1	1.7	5.1	1.4
H522.7382 Commercial Divers	-	-	-	-	-
H523.7383 Other Trades and Related Occupations	48	0.7	1.2	4.2	1.0
H53.744 Other installers, repairers and servicers	171	1.9	3.8	-0.3	2.9
H531.7441 Residential and Commercial Installers and Servicers	78	2.6	6.9	-4.2	4.9
H532.7442 Waterworks and Gas Maintenance Workers	21	1.0	1.0	0.3	1.0
H533.7443 Automotive Mechanical Installers and Servicers	35	1.2	0.9	4.0	1.0

## Selkirk College Region

### Projected Annual Growth Rates in Occupational Demand

	Estimated Employment	Average Annual % Change			Avg Annual % Chg Over 4 Years
	<u>2005</u>	<u>2007/2005</u>	<u>2009/2007</u>	<u>2010/2009</u>	<u>2009/2005</u>
H534.7444 Pest Controllers and Fumigators	-	-	-	-	-
H535.7445 Other Repairers and Servicers	37	1.3	1.3	4.3	1.3
H6 Heavy equipment and crane operators including drillers	385	2.0	4.5	-2.8	3.3
H61.742 Heavy Equipment Operators	294	2.2	4.9	-3.1	3.7
H611.7421 Heavy Equipment Operators (Except Crane)	275	2.2	5.1	-3.2	3.7
H612.7422 Public Works Maintenance Equipment Operators	19	1.6	3.1	-1.1	2.4
H62.737 Crane Operators, Drillers and Blasters	93	1.4	3.1	-1.8	2.3
H621.7371 Crane Operators	69	1.1	2.3	-1.0	1.7
H622.7372 Drillers and Blasters - Surface Mining Quarrying and Construction	18	2.3	4.9	-3.6	3.8
H623.7373 Water Well Drillers	-	-	-	-	-
H7 Transportation equipment operators and related workers, excluding labourers	969	0.5	1.7	1.4	1.2
H71.741 Motor Vehicle and Transit Drivers	894	0.3	1.7	1.4	1.0
H711.7411 Truck Drivers	614	-0.3	1.5	0.6	0.6
H712.7412 Bus Drivers and Subway and Other Transit Operators	88	1.8	1.8	1.6	1.8
H713.7413 Taxi and Limousine Drivers and Chauffeurs	45	2.7	2.6	2.0	2.7
H714.7414 Delivery and Courier Service Drivers	148	1.4	2.0	4.2	1.7
H72.736 Train Crew Operating Occupations	13	4.5	2.7	1.7	3.7
H721.7361 Railway and Yard Locomotive Engineers	-	-	-	-	-
H722.7362 Railway Conductors and Brakemen/women	-	-	-	-	-
H73.743 Other Transport Equipment Operators and Related Workers	60	3.0	2.4	1.9	2.8
H731.7431 Railway Yard Workers	-	-	-	-	-
H732.7432 Railway Track Maintenance Workers	-	-	-	-	-
H733.7433 Deck Crew Water Transport	15	2.8	2.0	2.1	2.4
H734.7434 Engine Room Crew, Water Transport	-	-	-	-	-
H735.7435 Lock and Cable Ferry Operators and Related Occupations	-	-	-	-	-
H736.7436 Boat Operators	-	-	-	-	-
H737.7437 Air Transport Ramp Attendants	19	2.7	2.5	2.1	2.7

# Selkirk College Region

## Projected Annual Growth Rates in Occupational Demand

	Estimated Employment	Average Annual % Change			Avg Annual % Chg Over 4 Years
	<u>2005</u>	<u>2007/2005</u>	<u>2009/2007</u>	<u>2010/2009</u>	<u>2009/2005</u>
H8 Trades helpers, construction and transportation labourers and related occupations	808	1.8	4.0	-1.0	3.0
H81.745 Longshore Workers and Material Handlers	389	0.9	1.3	2.9	1.1
H811.7451 Longshore Workers	33	2.1	2.2	2.4	2.2
H812.7452 Material Handlers	356	0.8	1.2	3.0	1.0
H82.761 Trades Helpers and Labourers	375	2.7	6.9	-4.6	5.0
H821.7611 Construction Trades Helpers and Labourers	347	2.8	7.3	-5.0	5.3
H822.7612 Other Trades Helpers and Labourers	28	1.2	2.2	0.7	1.7
H83.762 Public Works and Other Labourers n.e.c.	44	1.2	2.5	-0.5	1.8
H831.7621 Public Works and Maintenance Labourers	35	1.3	2.5	-0.7	1.9
H832.7622 Railway and Motor Transport Labourers	-	-	-	-	-
I Occupations unique to primary industry	1,606	1.2	0.4	2.4	0.8
I0 Occupations unique to agriculture, excluding labourers	836	0.9	0.5	4.1	0.7
I01.825 Contractors, Operators and Supervisors in Agriculture, Horticulture and Aquaculture	458	0.9	0.5	4.0	0.7
I011.8251 Farmers and Farm Managers	358	0.9	0.4	4.3	0.6
I012.8252 Agricultural and Related Service Contractors and Managers	-	-	-	-	-
I013.8253 Farm Supervisors and Specialized Livestock Workers	26	0.9	0.6	3.7	0.8
I014.8254 Nursery and Greenhouse Operators and Managers	28	1.0	0.3	3.7	0.7
I015.8255 Landscaping & Grounds Maintenance Contractors & Managers	-	-	-	-	-
I016.8256 Supervisors, Landscape and Horticulture	16	1.0	1.0	1.9	1.0
I017.8257 Aquaculture Operators and Managers	15	0.8	0.4	3.9	0.6
I02.843 Agriculture and Horticulture Workers	378	0.9	0.4	4.2	0.7
I021.8431 General Farm Workers	259	0.9	0.4	4.3	0.7
I022.8432 Nursery and Greenhouse Workers	120	0.9	0.4	4.0	0.7
I1 Occupations unique to forestry operations, mining, oil and gas extraction and fishing excluding labourers	424	1.6	0.2	0.1	0.9
I11.821 Supervisors, Logging and Forestry	65	1.4	0.1	0.7	0.7
I111.8211 Supervisors, Logging and Forestry	64	1.4	0.1	0.6	0.7
I12.822 Supervisors, Mining, Oil and Gas	22	1.5	1.2	0.3	1.4

## Selkirk College Region

### Projected Annual Growth Rates in Occupational Demand

	Estimated Employment	Average Annual % Change			Avg Annual % Chg Over 4 Years
	<u>2005</u>	<u>2007/2005</u>	<u>2009/2007</u>	<u>2010/2009</u>	<u>2009/2005</u>
I121.8221 Supervisors, Mining and Quarrying	14	0.7	0.6	1.4	0.7
I122.8222 Supervisors, Oil and Gas Drilling and Service	-	-	-	-	-
I13.823 Underground Miners, Oil and Gas Drillers and Related Workers	20	1.4	1.0	0.6	1.2
I131.8231 Underground Production and Development Miners	14	0.9	0.7	1.4	0.8
I132.8232 Oil and Gas Well Drillers, Servicers, Testers and Related Workers	-	-	-	-	-
I14.841 Mine Service Workers and Operators in Oil and Gas Drilling	17	2.0	1.9	-1.0	2.0
I141.8411 Underground Mine Service and Support Workers	-	-	-	-	-
I142.8412 Oil and Gas Well Drilling Workers and Services Operators	-	-	-	-	-
I15.824 Logging Machinery Operators	112	1.5	0.1	0.2	0.8
I151.8241 Logging Machinery Operators	112	1.5	0.1	0.2	0.8
I16.842 Logging and Forestry Workers	179	1.7	-0.2	-0.5	0.7
I161.8421 Chain-saw and Skidder Operators	118	1.7	-0.2	-0.5	0.7
I162.8422 Silviculture and Forestry Workers	62	1.6	-0.1	-0.4	0.7
I17.826 Fishing Vessel Masters and Skippers and Fishermen/women	-	-	-	-	-
I171.8261 Fishing Masters and Officers	-	-	-	-	-
I172.8262 Fishing Vessel Skippers and Fishermen/women	-	-	-	-	-
I18.844 Other Fishing and Trapping Occupations	-	-	-	-	-
I181.8441 Fishing Vessel Deckhands	-	-	-	-	-
I182.8442 Trappers and Hunters	0	-	-	-	-
I2 Primary production labourers	348	1.4	0.6	1.2	1.0
I21.861 Primary Production Labourers	348	1.4	0.6	1.2	1.0
I211.8611 Harvesting Labourers	40	0.9	0.4	4.2	0.6
I212.8612 Landscaping and Grounds Maintenance Labourers	86	1.3	1.7	1.6	1.5
I213.8613 Aquaculture and Marine Harvest Labourers	17	0.9	0.5	4.3	0.7
I214.8614 Mine Labourers	13	0.8	0.8	0.6	0.8
I215.8615 Oil and Gas Drilling, Servicing and Related Labourers	13	2.7	2.3	-1.7	2.5
I216.8616 Logging and Forestry Labourers	176	1.5	-0.1	0.2	0.7
J Occupations unique to processing, manufacturing and utilities	2,413	0.8	1.0	3.0	0.9
J0 Supervisors in manufacturing	237	0.8	0.9	2.4	0.8

# Selkirk College Region

## Projected Annual Growth Rates in Occupational Demand

	Estimated Employment	Average Annual % Change			Avg Annual % Chg Over 4 Years
	<u>2005</u>	<u>2007/2005</u>	<u>2009/2007</u>	<u>2010/2009</u>	<u>2009/2005</u>
J01.921 Supervisors, Processing Occupations	199	0.8	0.8	2.3	0.8
J011.9211 Supervisors, Mineral and Metal Processing	74	0.5	0.4	0.4	0.5
J012.9212 Supervisors, Petroleum, Gas and Chemical Processing and Utilities	21	1.0	0.7	0.0	0.9
J013.9213 Supervisors, Food, Beverage and Tobacco Processing	12	2.6	1.6	1.9	2.2
J014.9214 Supervisors, Plastic and Rubber Products Manufacturing	-	-	-	-	-
J015.9215 Supervisors, Forest Products Processing	90	0.7	0.9	4.4	0.8
J016.9216 Supervisors, Textile Processing	-	-	-	-	-
J02.922 Supervisors, Assembly and Fabrication	36	0.9	1.5	3.5	1.2
J021.9221 Supervisors, Motor Vehicle Assembling	-	-	-	-	-
J022.9222 Supervisors, Electronics Manufacturing	-	-	-	-	-
J023.9223 Supervisors, Electrical Products Manufacturing	-	-	-	-	-
J024.9224 Supervisors, Furniture and Fixtures Manufacturing	-	-	-	-	-
J025.9225 Supervisors, Fabric, Fur and Leather Products Manufacturing	-	-	-	-	-
J026.9226 Supervisors, Other Mechanical and Metal Products Manufacturing	-	-	-	-	-
J027.9227 Supervisors, Other Products Manufacturing and Assembly	13	0.8	1.3	2.1	1.1
J1 Machine operators in manufacturing	1,113	0.8	0.9	2.8	0.9
J11.923 Central Control and Process Operators in Manufacturing and Processing	110	1.1	0.7	0.0	0.9
J111.9231 Central Control & Process Operators Mineral & Metal Processing	76	0.5	0.2	0.2	0.4
J112.9232 Petroleum, Gas and Chemical Process Operators	15	2.8	2.1	-2.0	2.5
J113.9233 Pulp and Paper Control Operators	-	-	-	-	-
J114.9234 Papermaking and Coating Control Operators	12	2.2	1.2	0.8	1.7
J12.941 Machine Operators and Related Workers in Metal and Mineral Products Processing	249	0.6	0.5	0.5	0.5
J121.9411 Machine Operators, Mineral and Metal Processing	123	0.5	0.3	0.3	0.4
J122.9412 Foundry Workers	97	0.5	0.2	0.2	0.4



## Selkirk College Region

### Projected Annual Growth Rates in Occupational Demand

	Estimated Employment	Average Annual % Change			Avg Annual % Chg Over 4 Years
	<u>2005</u>	<u>2007/2005</u>	<u>2009/2007</u>	<u>2010/2009</u>	<u>2009/2005</u>
J123.9413 Glass Forming and Finishing Machine Operators and Glass Cutters	-	-	-	-	-
J124.9414 Concrete, Clay and Stone Forming Operators	13	1.8	4.3	0.5	3.2
J125.9415 Inspectors and Testers, Mineral and Metal Processing	-	-	-	-	-
J13.942 Machine Operators and Related Workers in Chemical, Plastic and Rubber Processing	36	0.8	0.7	1.1	0.8
J131.9421 Chemical Plant Machine Operators	16	0.7	0.4	0.7	0.6
J132.9422 Plastics Processing Machine Operators	-	-	-	-	-
J133.9423 Rubber Processing Machine Operators and Related Workers	-	-	-	-	-
J134.9424 Water and Waste Plant Operators	16	0.9	0.7	0.9	0.8
J14.943 Machine Operators and Related Workers in Pulp and Paper Production and Wood Processing	437	0.6	0.9	4.5	0.8
J141.9431 Sawmill Machine Operators	216	0.4	0.9	5.0	0.6
J142.9432 Pulp Mill Machine Operators	21	2.2	1.2	0.6	1.8
J143.9433 Papermaking and Finishing Machine Operators	14	2.0	1.4	1.0	1.7
J144.9434 Other Wood Processing Machine Operators	55	0.6	1.0	4.4	0.8
J145.9435 Paper Converting Machine Operators	-	-	-	-	-
J146.9436 Lumber Graders and Other Wood Processing Inspectors and Graders	121	0.4	0.8	4.9	0.6
J15.944 Machine Operators and Related Workers in Textile Processing	-	-	-	-	-
J151.9441 Textile Fibre and Yarn Preparation Machine Operators	-	-	-	-	-
J152.9442 Weavers, Knitters and Other Fabric-Making Occupations	-	-	-	-	-
J153.9443 Textile Dyeing and Finishing Machine Operators	-	-	-	-	-
J154.9444 Textile Inspectors, Graders and Samplers	-	-	-	-	-
J16.945 Machine Operators and Related Workers in Fabric, Fur and Leather Products Manufacturing	50	1.1	1.6	6.4	1.4
J161.9451 Sewing Machine Operators	44	1.1	1.7	6.4	1.4
J162.9452 Fabric, Fur and Leather Cutters	-	-	-	-	-
J163.9453 Hide and Pelt Processing Workers	0	-	-	-	-

# Selkirk College Region

## Projected Annual Growth Rates in Occupational Demand

	Estimated Employment	Average Annual % Change			Avg Annual % Chg Over 4 Years
	<u>2005</u>	<u>2007/2005</u>	<u>2009/2007</u>	<u>2010/2009</u>	<u>2009/2005</u>
J164.9454 Inspectors and Testers, Fabric, Fur and Leather Products Manufacturing	-	-	-	-	-
J17.946 Machine Operators and Related Workers in Food, Beverage and Tobacco Processing	53	2.9	1.6	1.7	2.3
J171.9461 Process Control and Machine Operators, Food and Beverage Processing	30	2.9	1.6	1.7	2.3
J172.9462 Industrial Butchers and Meat Cutters, Poultry Preparers and Related Workers	17	3.1	1.6	1.3	2.4
J173.9463 Fish Plant Workers	-	-	-	-	-
J174.9464 Tobacco Processing Machine Operators	0	-	-	-	-
J175.9465 Testers and Graders, Food and Beverage Processing	-	-	-	-	-
J18.947 Printing Machine Operators and Related Occupations	58	1.1	1.2	5.0	1.2
J181.9471 Printing Machine Operators	14	1.0	1.5	5.5	1.2
J182.9472 Camera, Platemaking and Other Pre-Press Occupations	-	-	-	-	-
J183.9473 Binding and Finishing Machine Operators	-	-	-	-	-
J184.9474 Photographic and Film Processors	31	1.2	0.9	4.6	1.1
J19.951 Machining, Metalworking, Woodworking and Related Machine Operators	106	0.6	0.8	2.4	0.7
J191.9511 Machining Tool Operators	12	0.8	1.0	2.5	0.9
J192.9512 Forging Machine Operators	-	-	-	-	-
J193.9513 Woodworking Machine Operators	28	0.7	1.5	4.8	1.1
J194.9514 Metalworking Machine Operators	32	0.6	0.5	1.2	0.5
J196.9516 Other Metal Products Machine Operators.	26	0.6	0.4	0.6	0.5
J197.9517 Other Products Machine Operators	-	-	-	-	-
J2 Assemblers in manufacturing	216	1.1	1.9	4.1	1.5
J21.948 Mechanical, Electrical and Electronics Assemblers	64	1.1	1.7	4.7	1.4
J211.9481 Aircraft Assemblers and Aircraft Assembly Inspectors	-	-	-	-	-
J212.9482 Motor Vehicle Assemblers, Inspectors and Testers	-	-	-	-	-
J213.9483 Electronics Assemblers, Fabricators, Inspectors and Testers	19	0.9	1.6	5.4	1.3

# Selkirk College Region

## Projected Annual Growth Rates in Occupational Demand

	Estimated Employment	Average Annual % Change			Avg Annual % Chg Over 4 Years
	<u>2005</u>	<u>2007/2005</u>	<u>2009/2007</u>	<u>2010/2009</u>	<u>2009/2005</u>
J214.9484 Assemblers and Inspectors, Electrical Appliance, Apparatus and Equipment Manufacturing	-	-	-	-	-
J215.9485 Assemblers, Fabricators and Inspectors, Industrial Electrical Motors and Transformers	-	-	-	-	-
J216.9486 Mechanical Assemblers and Inspectors	16	1.1	1.6	3.7	1.4
J217.9487 Machine Operators and Inspectors, Electrical Apparatus Manufacturing	-	-	-	-	-
J22.949 Other Assembly and Related Occupations	151	1.1	2.1	3.8	1.6
J221.9491 Boat Assemblers and Inspectors	18	1.0	1.6	5.2	1.4
J222.9492 Furniture and Fixture Assemblers and Inspectors	39	1.2	1.9	4.3	1.6
J223.9493 Other Wood Products Assemblers and Inspectors	39	0.8	1.8	3.6	1.3
J224.9494 Furniture Finishers and Refinishers	-	-	-	-	-
J225.9495 Plastic Products Assemblers, Finishers and Inspectors	-	-	-	-	-
J226.9496 Painters and Coaters - Industrial	28	1.6	3.2	0.9	2.5
J227.9497 Plating, Metal Spraying and Related Operators	-	-	-	-	-
J228.9498 Other Assemblers and Inspectors	-	-	-	-	-
J3 Labourers in processing, manufacturing and utilities	849	0.8	0.9	3.3	0.8
J31.961 Labourers in Processing, Manufacturing and Utilities	849	0.8	0.9	3.3	0.8
J311.9611 Labourers in Mineral and Metal Processing	154	0.5	0.3	0.3	0.4
J312.9612 Labourers in Metal Fabrication	53	0.7	0.9	1.3	0.8
J313.9613 Labourers in Chemical Products Processing and Utilities	30	0.6	0.4	0.2	0.5
J314.9614 Labourers in Wood Pulp and Paper Processing	472	0.6	0.9	4.7	0.7
J315.9615 Labourers in Rubber and Plastic Products Manufacturing	-	-	-	-	-
J316.9616 Labourers in Textile Processing	-	-	-	-	-
J317.9617 Labourers in Food Beverage and Tobacco Processing	83	2.6	1.5	2.1	2.1
J318.9618 Labourers in Fish Processing	-	-	-	-	-
J319.9619 Other Labourers in Processing, Manufacturing and Utilities	51	1.0	1.7	4.6	1.4

- suppressed due to small numbers