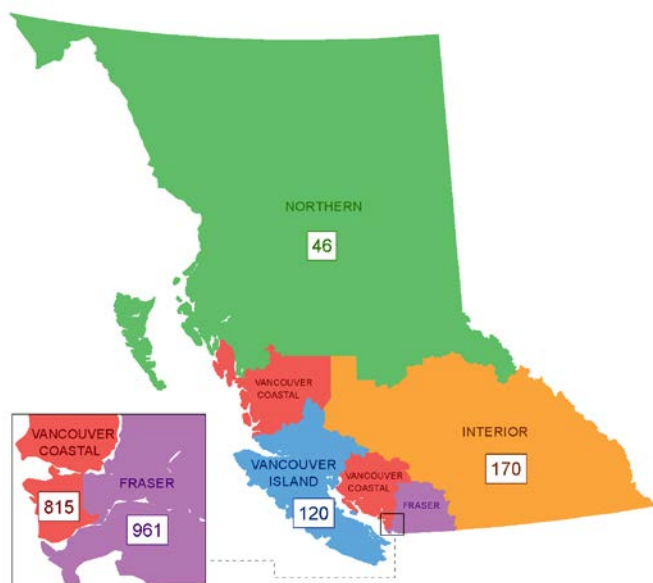


**British Columbia COVID-19 Daily Situation Report, April 30, 2020\***

**Figure 1:** Map of COVID-19 confirmed cases reported by health authority, BC, January 1 – April 30, 2020 (N=2,112)



**Key messages**

- The number of reported cases varied recently but has been higher than in early April (Table 1, Fig 2).
- The increase may be associated with the increased number of lab tests (Fig 3) and recently reported outbreaks (Fig 4, Table 2).
- Lab testing positivity has decreased since April 21 (Fig 3).
- The increase in reported cases has not yet led to an increase in hospitalisations or critical care admissions (Fig 6-8).
- The number of reported cases is similar in males and females but the proportion of severe cases is higher in men (Table 1, Fig 5).

**Table 1:** Epidemiological profile of reported cases by health authority, BC, January 1 – April 30, 2020 (N=2,112)

|   | Fraser     | Interior   | Vancouver Island | Northern  | Vancouver Coastal | Total N (%) <sup>a</sup>         |
|---|------------|------------|------------------|-----------|-------------------|----------------------------------|
| <b>Total number of cases</b>                        | <b>961</b> | <b>170</b> | <b>120</b>       | <b>46</b> | <b>815</b>        | <b>2,112</b>                     |
| <b>New cases since yesterday</b>                    | <b>20</b>  | <b>1</b>   | <b>0</b>         | <b>0</b>  | <b>4</b>          | <b>25</b>                        |
| Median age in years, cases <sup>b</sup>             | 52         | 48         | 51               | 44        | 56                | 53 years<br>(range 0-102 years)  |
| Female sex, cases                                   | 467        | 84         | 65               | 28        | 453               | 1,097/2,110 (52%)                |
| <b>Ever hospitalized<sup>c</sup></b>                | <b>218</b> | <b>29</b>  | <b>24</b>        | <b>11</b> | <b>152</b>        | <b>434 (21%)</b>                 |
| Median age in years, ever hospitalized <sup>b</sup> | 71         | 62         | 72               | 47        | 70                | 69 years<br>(range 0-98 years)   |
| Currently hospitalized <sup>c</sup>                 | 41         | 4          | 5                | 3         | 29                | 82                               |
| <b>Currently in critical care<sup>d</sup></b>       | <b>14</b>  | <b>1</b>   | <b>0</b>         | <b>2</b>  | <b>13</b>         | <b>30</b>                        |
| <b>Total number of deaths<sup>c</sup></b>           | <b>33</b>  | <b>2</b>   | <b>4</b>         | <b>0</b>  | <b>72</b>         | <b>111 (5%)</b>                  |
| <b>New deaths since yesterday</b>                   | <b>1</b>   | <b>0</b>   | <b>0</b>         | <b>0</b>  | <b>1</b>          | <b>2</b>                         |
| Median age in years, deaths <sup>b</sup>            | 82         | 73         | 86               | NA        | 87                | 85 years<br>(range 47-101 years) |
| <b>Discontinued isolation<sup>e</sup></b>           | <b>480</b> | <b>146</b> | <b>92</b>        | <b>41</b> | <b>563</b>        | <b>1,322 (63%)</b>               |

<sup>a</sup> Denominator for % derivation is total number of cases (N), except sex for which denominator is as specified for those with known information on sex.

<sup>b</sup> Median age is calculated based on those with known information for all, hospitalized, and deceased cases (n=2110, 434, and 111, respectively).

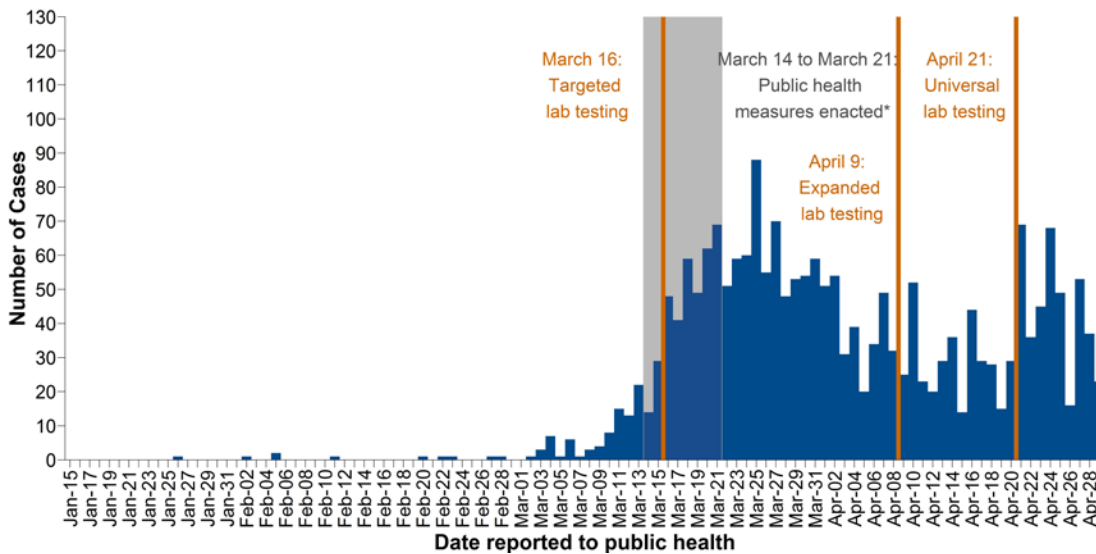
<sup>c</sup> Serious outcomes (i.e., hospitalization, death) may be incomplete or out of date (i.e., under-estimates) owing to the timing and process for case status update.

<sup>d</sup> Source: PHSA April 30@10am. The number of COVID cases in critical care units is reported daily by each Health Authority and includes the number of COVID patients in all critical care beds (e.g., intensive care units; high acuity units; and other surge critical care spaces as they become available and/or required). Work is ongoing to improve the completeness and accuracy of the data reported.

<sup>e</sup> Self-isolation has been discontinued per the criteria outlined in [BC guidelines for public health management of COVID-19](#): (1) resolution of fever without use of fever-reducing medications; AND (2) improvement of symptoms (respiratory, gastrointestinal and systemic); AND (3) either two negative nasopharyngeal swabs collected at least 24 hours apart, or at least 10 days have passed since onset of symptoms. These are the same criteria that had been used in previous reports for "recovered" cases.

\*All findings are based on laboratory-confirmed cases reported from Health Authorities to BCCDC as of 10:00 AM PT, except where otherwise noted. Data represent a subset of actual cases and are subject to change with changes in testing recommendations and practices, reconciliation and/or as data become more complete.

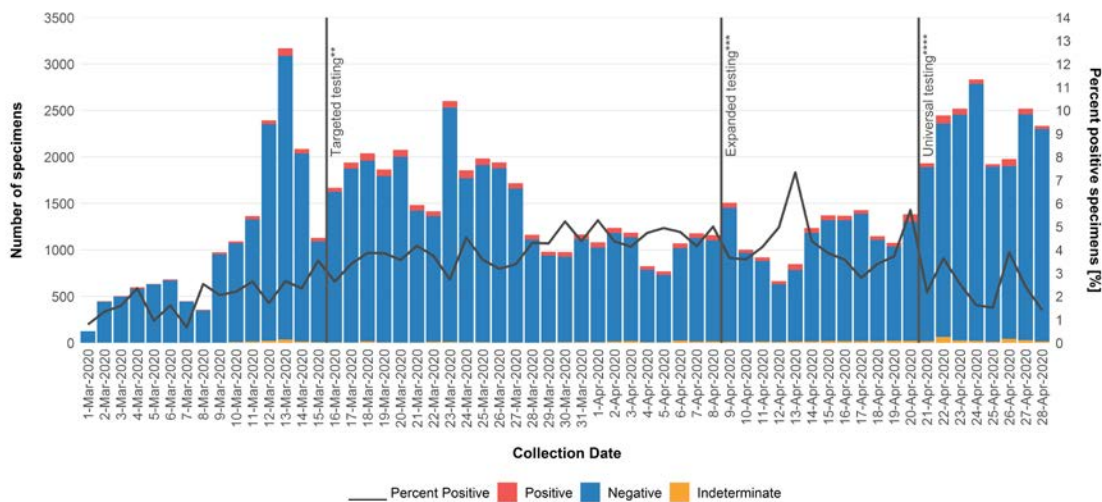
**Figure 2: Epidemic curve, confirmed COVID-19 cases in BC by reported date January 15-April 29, 2020 (N=2,112<sup>‡</sup>)**



<sup>‡</sup> Cases reported on the same day as this report are excluded as only a portion are available at the time the data are extracted. The number of cases reported by day differs from that in Table 1 in previous reports as this figure reflects the date the case was lab-confirmed and reported to the Health Authority.

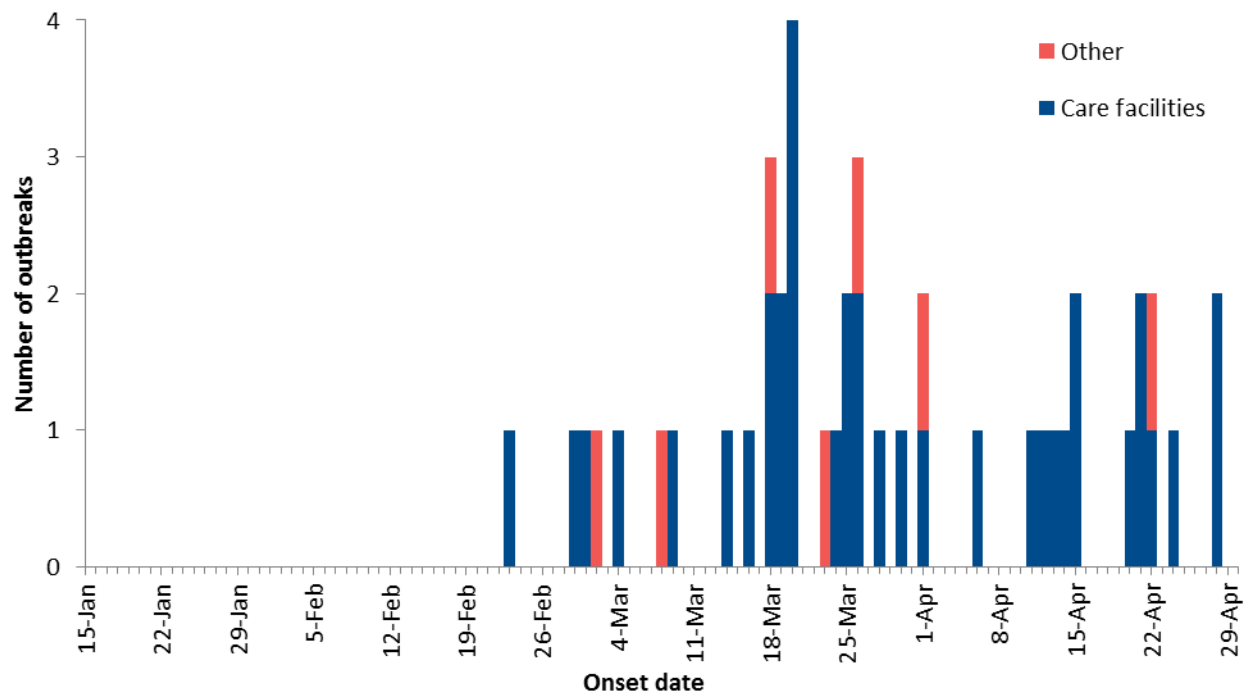
\*A number of public health measures were enacted during the week shaded in grey. These include: March 14: Spring break started for most schools; March 16: Mass gatherings public health order implemented (>50 people), entry of foreign nationals banned, symptomatic individuals banned from flights to Canada, international flights restricted to four national airports; March 17: BC public health emergency declared, traveller self-isolation public health order implemented; March 18: Provincial state of emergency declared, food and drink service restrictions public health order implemented; March 20: US/Canada border closed to non-essential travel; March 21: closure of personal service establishments. Please refer to footnote in Figure 3 for laboratory testing criteria changes.

**Figure 3: Number and proportion of SARS-CoV-2 positive respiratory specimens, BC, March 1-April 28, 2020 (N=83,800; Positive=3.3%)**



Data source: PLOVER extract on April 30, 2020. Methods and caveats: SARS-CoV-2 specimens are tallied at the specimen level by date the specimen was collected. The proportion positive on a given date may include new positive cases and retested positive cases; this may over-estimate proportionate positivity. Similarly, individuals may be tested repeatedly after becoming negative; this may under-estimate proportionate positivity. \*\*As of March 16, testing guidelines changed to focus on hospitalized patients, healthcare workers, long term care facility staff and residents, and those part of a cluster or outbreak who experienced respiratory symptoms. \*\*\*As of April 9, testing guidelines were expanded to include individuals with fever (>38°C) and cough or shortness of breath, including (a) residents of remote, isolated or Indigenous communities, (b) people living and working in congregate settings such as work-camps, correctional facilities, shelters, group homes, assisted living and seniors' residences, (c) people who are homeless or have unstable housing, (d) essential service providers (e.g. first responders), or (e) returning travellers identified at a point of entry to Canada. In addition, health care providers can order a COVID-19 test for any patient based on their clinical judgment. \*\*\*\*As of Apr 21, the testing guidelines were further expanded to include all individuals with new respiratory or systemic symptoms compatible with COVID-19, however mild. Symptoms may include fever, chills, cough, shortness of breath, sore throat, odynophagia, rhinorrhea, nasal congestion, loss of sense of smell, headache, muscle aches, fatigue, or loss of appetite.

**Figure 4: COVID-19 outbreaks\* by earliest date\*\*, BC, January 15-April 30, 2020 (N=44)**



\* Care facility (acute/longterm care/independent living) outbreaks have at least one lab-confirmed COVID-19 staff or resident. Other outbreaks have two or more lab-confirmed COVID-19 cases diagnosed within a 14-day period in closed or common settings (e.g. penitentiary, shared living or work setting).

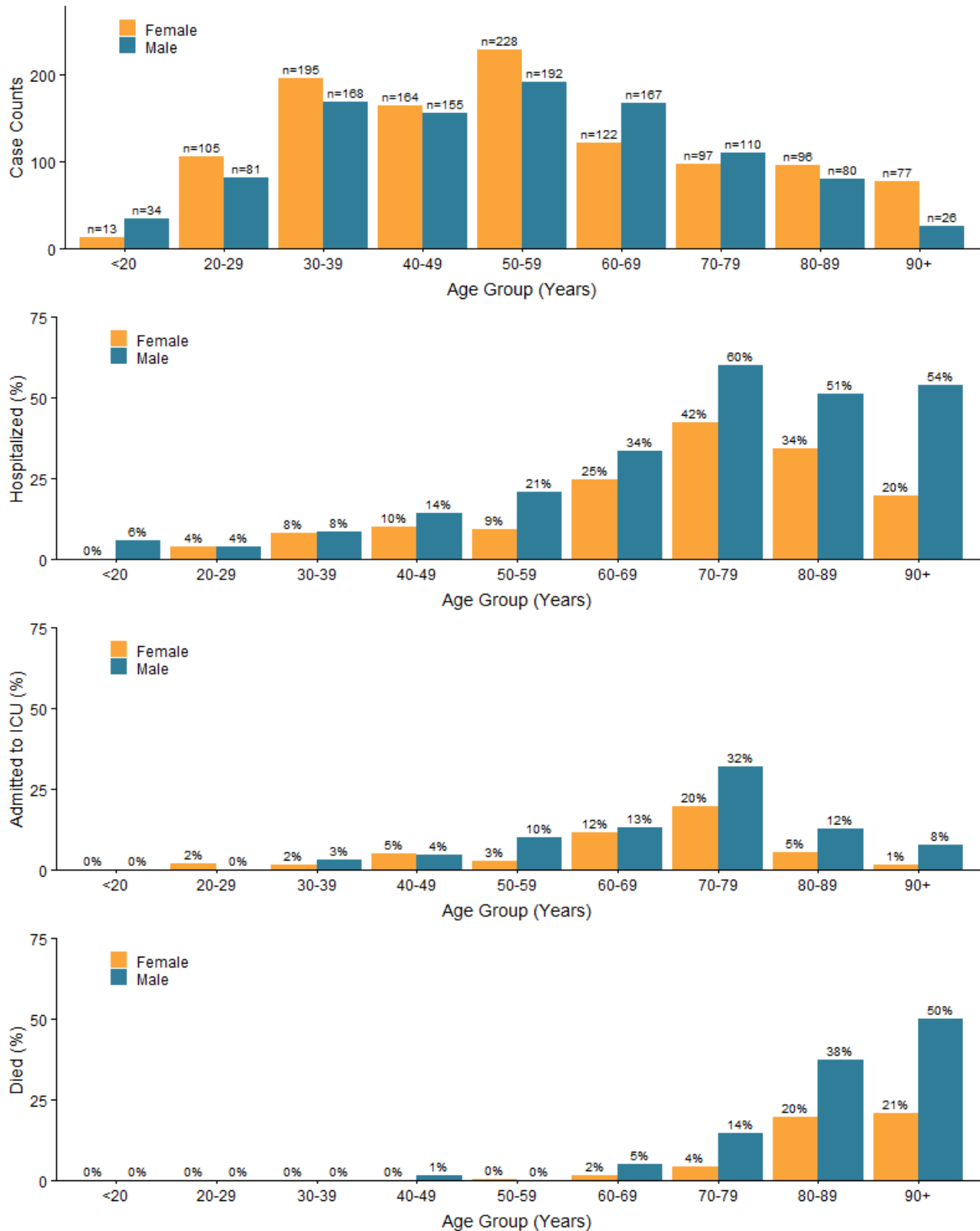
\*\* Earliest date is date of onset of earliest case in the outbreak (or reported date of earliest case when onset is unavailable) or date outbreak was declared.

**Table 2: Outbreak and case counts of reported COVID-19 reported outbreaks\*, BC, January 15-April 30, 2020 (N=44)**

|                         | Care facility | Other settings | Total      |
|-------------------------|---------------|----------------|------------|
| <b>Outbreaks</b>        |               |                |            |
| <b>Total outbreaks</b>  | <b>37</b>     | <b>7</b>       | <b>44</b>  |
| New since yesterday     | 0             | 0              | 0          |
| Active outbreaks        | 24            | 5              | 29         |
| Outbreaks declared over | 13            | 2              | 15         |
| <b>Outbreak cases</b>   |               |                |            |
| <b>Total cases</b>      | <b>409</b>    | <b>348</b>     | <b>757</b> |
| Residents/patients      | 256           | 121            | 377        |
| Staff/other             | 153           | 227            | 380        |
| <b>Total deaths</b>     | <b>69</b>     | <b>2</b>       | <b>71</b>  |
| Residents/patients      | 69            | 1              | 70         |
| Staff/other             | 0             | 1              | 1          |

\* Care facility (acute/longterm care/independent living) outbreaks have at least one lab-confirmed COVID-19 staff or resident. Other outbreaks have two or more lab-confirmed COVID-19 cases diagnosed within a 14-day period in closed or common settings (e.g. penitentiary, shared living or work setting).

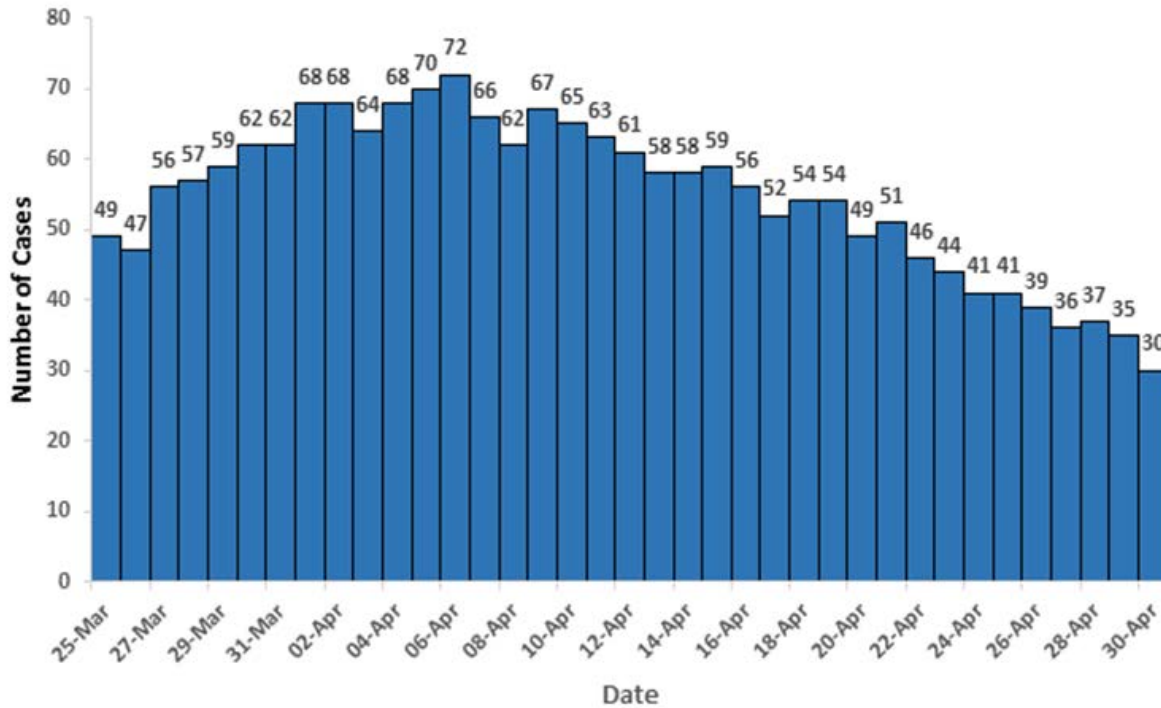
**Figure 5:** Counts of COVID-19 cases and proportions ever hospitalized, ever admitted to ICU, and with outcome of death by gender and age group, BC, January 1-April 30, 2020 (N=2,110\*)



\* Includes cases with gender and age information available.

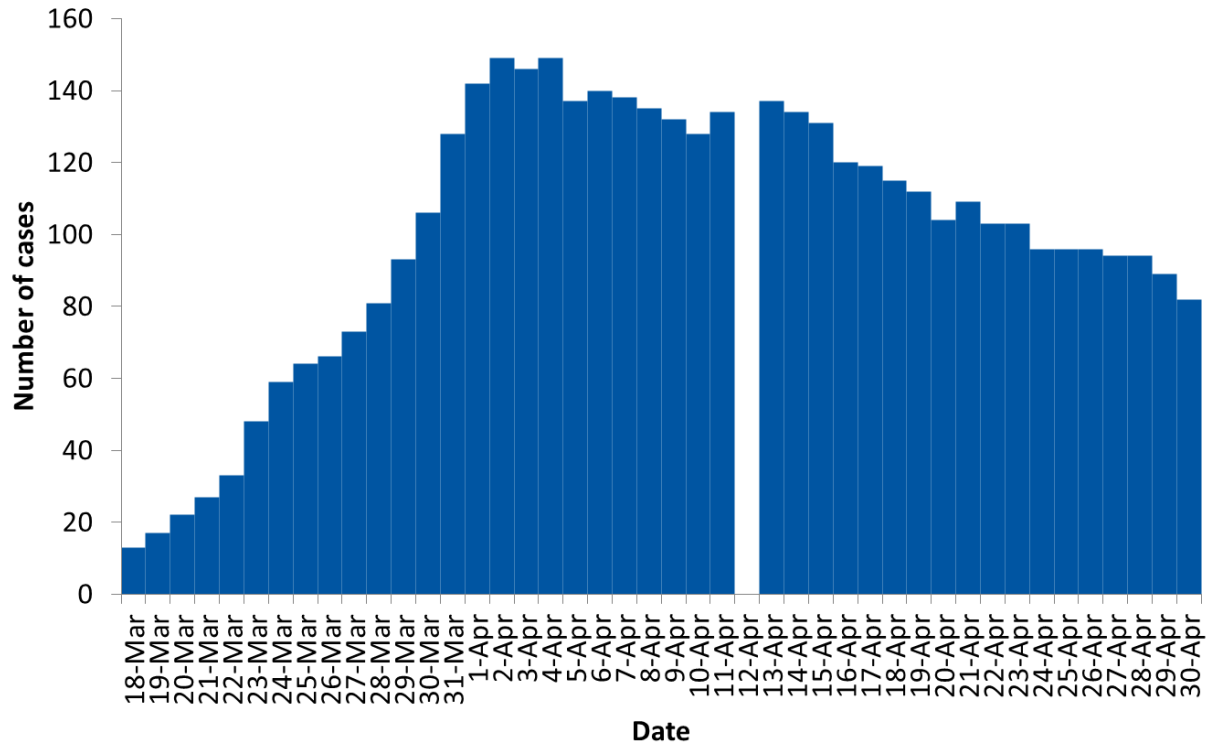
Note: Proportions calculated using the total number of cases in each gender and age group (displayed in top figure) as the denominator.

**Figure 6:** Total positive COVID-19 cases in critical care by day, BC, March 25-April 30, 2020



Data source: PHSA April 30. Note: critical care data may change over time due to small adjustments and improvements in data quality.

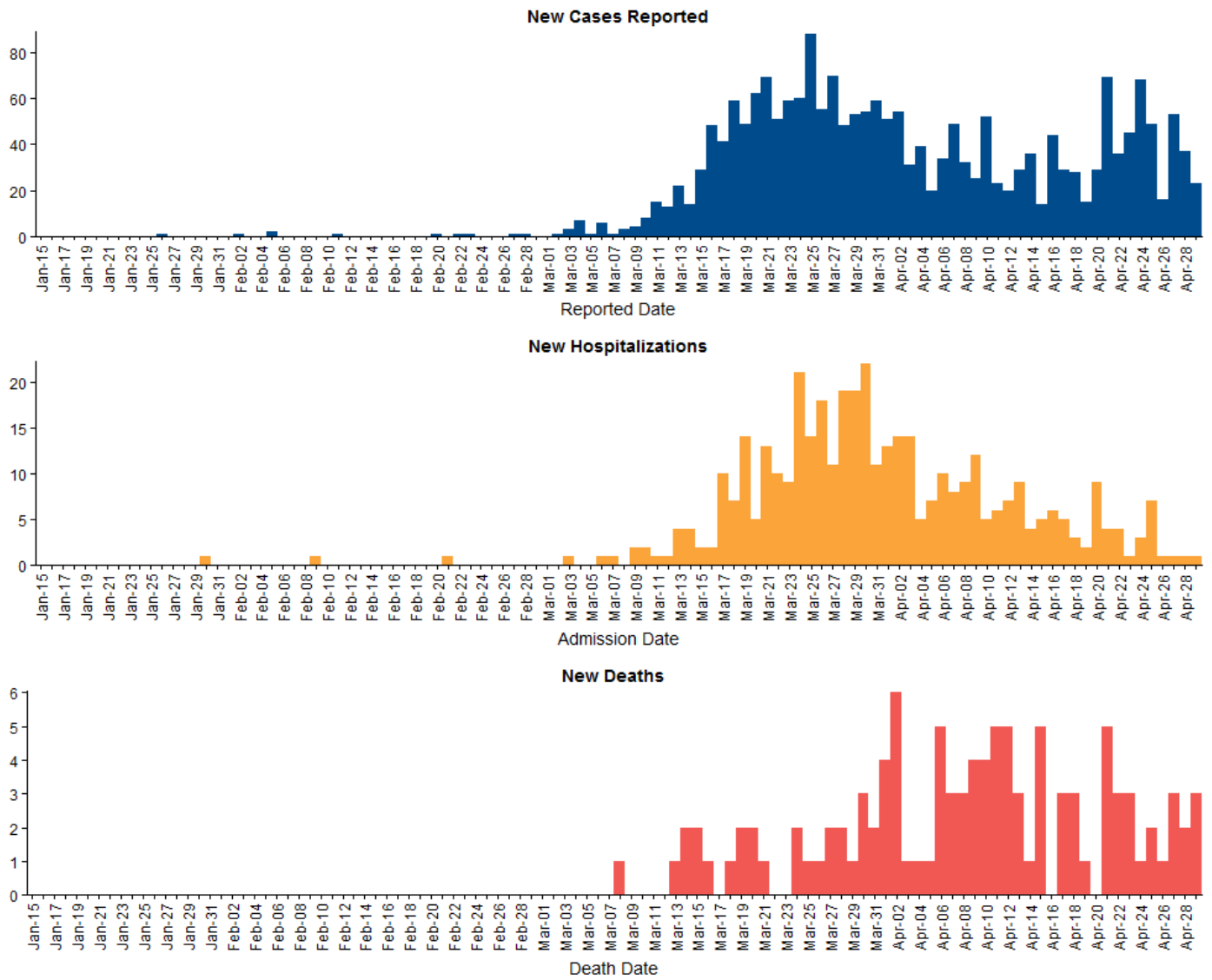
**Figure 7:** Number of confirmed COVID-19 cases in hospital by day, BC, March 18-April 30, 2020



Data source: HA lab-confirmed case reports. Data available starting March 18 and not available for April 12.

Note: Hospitalization data may be incomplete or out of date (i.e., under-estimates) owing to the timing and process for case status update.

**Figure 8.** Number of new COVID-19 cases, hospital admissions and deaths by event date, BC, Jan 15-April 29, 2020 (N=2,112\*)



Data source: HA lab-confirmed case reports

\*Missing or invalid event dates excluded (n=2112 cases, 403 hospitalizations, and 108 deaths)