

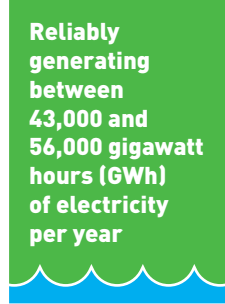
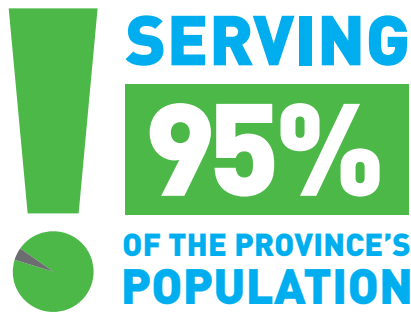
QUICK FACTS*

BC Hydro is...

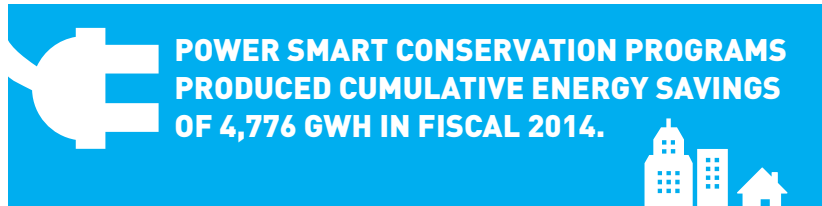
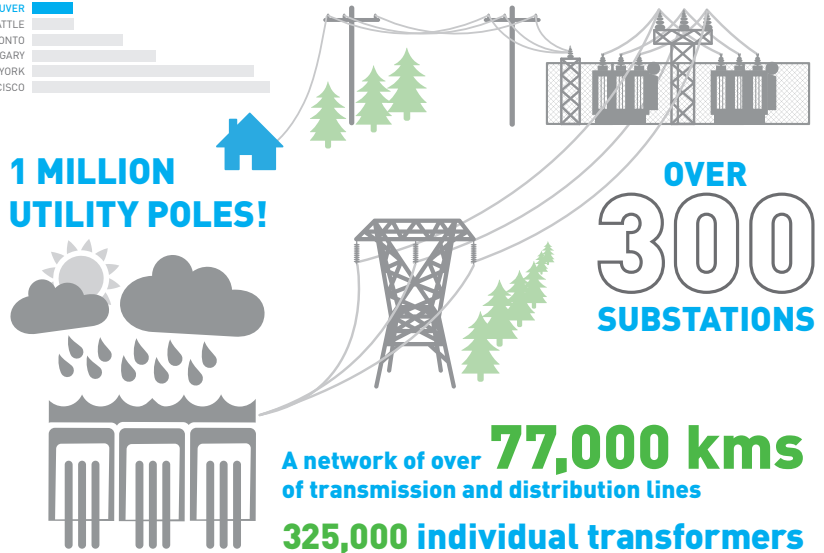
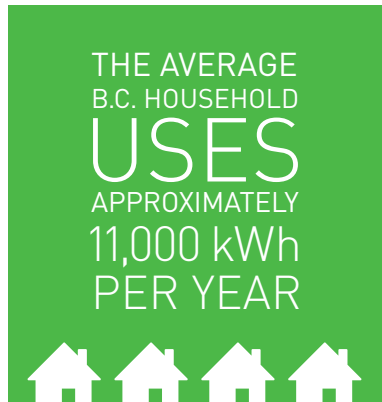
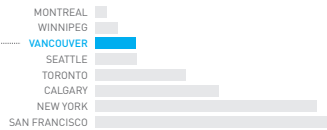


POWERING B.C. WITH
CLEAN, RELIABLE ELECTRICITY
FOR GENERATIONS.

A COMMERCIAL **CROWN CORPORATION** OWNED BY THE PROVINCE OF BRITISH COLUMBIA



the **3rd Lowest**
Residential Rates in
North America**



BC hydro
FOR GENERATIONS

Financial Information (in millions)

for the years ended or as at March 31	2014	2013
Revenues	\$ 5,392	\$ 4,898
Net income	\$ 549	\$ 509
Property, plant and equipment and intangible assets	\$ 19,026	\$ 17,664
Property, plant and equipment and intangible expenditures	\$ 2,036	\$ 1,929
Net long-term debt	\$ 15,461	\$ 13,962

Definitions

power = how much electricity is consumed by customers or produced by power generators at any instant in time

energy = how much is consumed or produced over a period of time

capacity = the maximum sustainable amount of electricity that can be produced or delivered at any instant. Example: a car engine's horsepower rating is its energy capacity

Units of power

- 1 kilowatt (kW) = 1,000 watts
- 1 megawatt (MW) = 1,000 kilowatts (or 1 million watts)
- 1 gigawatt (GW) = 1,000 megawatts (or 1 billion watts)

Units of energy

- 1 kilowatt hour (kWh) = 1,000 watts for 1 hour (1,000 watt hours)
- 1 megawatt hour (MWh) = 1,000 kWh
- 1 gigawatt hour (GWh) = 1,000 MWh
- (Note that the abbreviations follow metric convention, so kilo is k, while mega and giga are capitalized. The abbreviation for watt is W.)

Power to Energy ratios – rule of thumb

- Power to energy – for thermal electric: MW x 8 = GWh per year
- Power to energy – for large hydro: MW x 5 = GWh per year

BC Hydro

333 Dunsmuir Street, Vancouver
British Columbia, Canada V6B 5R3

A downloadable version of this information is available at:

bchydro.com/quickfacts

BC Hydro 
FOR GENERATIONS

Operating Statistics

for the years ended or as at March 31	2014	2013
Customers		
Residential	1,709,071	1,689,050
Light industrial and commercial	201,812	199,981
Large industrial	177	172
Other	3,489	3,482
Trade	239	249
Total	1,914,788	1,892,934

Average number of customers per full time equivalent¹

	330	330
--	-----	-----

Electricity Sold (gigawatt-hours)

Residential	17,965	17,703
Light industrial and commercial	18,501	18,384
Large industrial	13,994	13,508
Other	2,558	7,417
Domestic	53,018	57,012
Trade	50,082	59,957
Total	103,100	116,969

Revenues (in millions)²

Residential	\$ 1,648	\$ 1,622
Light industrial and commercial	1,378	1,382
Large industrial	785	731
Other energy sales	508	303
Domestic	4,319	4,038
Trade	1,073	860
Total	\$ 5,392	\$ 4,898

Average Revenue (per kilowatt-hour)²

Residential	9.2¢	9.2¢
Light industrial and commercial	7.4	7.5
Large industrial	5.6	5.4
Other	19.9	4.1
Trade	4.6	3.1

Average Annual Kilowatt-Hour Use Per Residential Customer

	10,571	10,534
--	--------	--------

Peak One-Hour Demand Integrated System (megawatts)

	10,072	9,345
--	--------	-------

Lines In Service

Distribution (kilometres)	58,317	58,115
Transmission (circuit kilometres)	19,322	19,163

Water Inflows (% of average)

	95	109
--	----	-----

¹ Regular full time equivalents (FTEs) [actual regular hours worked during the year divided by expected regular working hours during the year] for BC Hydro, excluding subsidiaries.

² Revenues and average revenues are net of regulatory transfers.

Generating Capacity in MW

Hydroelectric*	Megawatts (MW)
Aberfeldie.....	25.0
Alouette.....	9.0
Ash River.....	28.0
Bridge River.....	478.0
Cheakamus.....	158.0
† Clayton Falls.....	2.0
Clowhom.....	33.0
Elk River.....	12.0
Falls River.....	7.0
V GM Shrum.....	2,730.0
John Hart.....	126.0
Jordan.....	170.0
Kootenay Canal.....	583.0
Ladore.....	47.0
La Joie.....	25.0
R Lake Bunzten.....	76.8
Mica.....	1,805.0
V Peace Canyon.....	694.0
R Puntledge.....	24.0
V Revelstoke.....	2,480.0
Ruskin.....	105.0
R Seton.....	48.0
Seven Mile.....	805.0
R Shuswap.....	6.0
Spillimacheen.....	4.0
V R Stave Falls.....	91.0
R Strathcona.....	64.0
R Wahleach.....	65.0
Waneta (1/3).....	164.4
Walter Hardman.....	8.0
Whatshan.....	54.0
	<u>10,927.2</u>

Thermal

Burrard.....	950.0
Fort Nelson.....	73.0
Prince Rupert.....	46.0
	<u>1,069.0</u>

Diesel Generation

† Ah-Sin-Heek.....	6.5
† Anahim Lake.....	3.6
† Atlin.....	2.7
† Bella Bella.....	4.9
† Dease Lake.....	3.5
† Eddontenajon.....	2.6
† Elhlateese.....	0.2
† Hartley Bay.....	1.1
† Kwadacha.....	1.8
† Masset.....	12.1
† Sandspit.....	10.2
† Telegraph Creek.....	1.8
† Tsay Keh Dene.....	1.1
† Toad River.....	0.6
	<u>52.7</u>
Total Capacity	<u>12,048.9</u>

* Maximum sustained generating capacity

R Has recreational area

V Has visitor centre

† Non-integrated area

Generation capacity figures may vary slightly from those stated in BC Hydro's Annual Report due to recent plant upgrades/updates. For capacity in kW see BC Hydro's Annual Financial Report to the British Columbia Utilities Commission.