

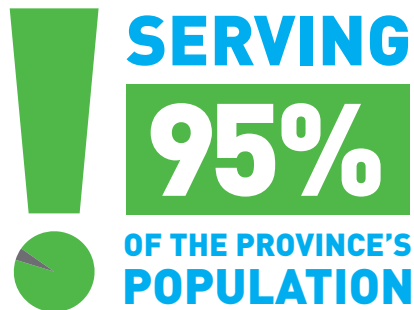
QUICK FACTS*

BC Hydro is...



POWERING B.C. WITH
CLEAN, RELIABLE ELECTRICITY
FOR GENERATIONS.

A COMMERCIAL **CROWN CORPORATION** OWNED BY THE PROVINCE OF BRITISH COLUMBIA

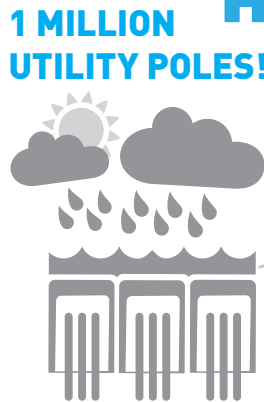


Reliably
generating
between
43,000 and
56,000 gigawatt
hours (GWh)
of electricity
per year

the **3rd Lowest**
Residential Rates in
North America**



THE AVERAGE
B.C. HOUSEHOLD
USES
APPROXIMATELY
11,000 kWh
PER YEAR



**OVER
290
SUBSTATIONS**

A network of over **77,000 kms**
of transmission and distribution lines
334,000 individual transformers

**POWER SMART CONSERVATION PROGRAMS
PRODUCED CUMULATIVE ENERGY SAVINGS
OF 4,334 GWH IN FISCAL 2015.**

BC hydro

Financial Information (in millions)

for the years ended or as at March 31	2015	2014
Revenues	\$ 5,748	\$ 5,392
Net income	\$ 581	\$ 549
Property, plant and equipment and intangible assets	\$ 20,480	\$ 19,034
Property, plant and equipment and intangible expenditures	\$ 2,169	\$ 2,036
Net long-term debt	\$ 16,682	\$ 15,461

Definitions

power = how much electricity is consumed by customers or produced by power generators at any instant in time

energy = how much is consumed or produced over a period of time

capacity = the maximum sustainable amount of electricity that can be produced or delivered at any instant. Example: a car engine's horsepower rating is its energy capacity

Units of power

- 1 kilowatt (kW) = 1,000 watts
- 1 megawatt (MW) = 1,000 kilowatts (or 1 million watts)
- 1 gigawatt (GW) = 1,000 megawatts (or 1 billion watts)

Units of energy

- 1 kilowatt hour (kWh) = 1,000 watts for 1 hour (1,000 watt hours)
- 1 megawatt hour (MWh) = 1,000 kWh
- 1 gigawatt hour (GWh) = 1,000 MWh
- (Note that the abbreviations for prefixes follow metric convention, so kilo is k, while mega and giga are capitalized. The abbreviation for watt is W.)

Power to Energy ratios – rule of thumb

- Power to energy – for thermal electric: MW x 8 = GWh per year
- Power to energy – for large hydro: MW x 5 = GWh per year

BC Hydro

333 Dunsmuir Street, Vancouver
British Columbia, Canada V6B 5R3

A downloadable version of this information is available at:

bchydro.com/quickfacts

Operating Statistics

for the years ended or as at March 31	2015	2014
Customers		
Residential	1,727,945	1,709,071
Light industrial and commercial	203,466	201,812
Large industrial	183	177
Other	3,474	3,489
Trade	226	239
Total	1,935,294	1,914,788

Average number of customers per full time equivalent¹

	340	330
--	-----	-----

Electricity Sold (gigawatt-hours)

Residential	17,047	17,965
Light industrial and commercial	18,564	18,501
Large industrial	14,020	13,994
Other	1,582	2,558
Total	51,213	53,018

Revenues (in millions)

Residential	\$ 1,712	\$ 1,663
Light industrial and commercial	1,597	1,489
Large industrial	748	687
Other energy sales	280	275
Domestic Revenues before Regulatory Transfers	4,337	4,114
Regulatory Transfers	492	205
Total Domestic Revenues	\$ 4,829	\$ 4,319

Average Revenues (per kilowatt-hour)²

Residential	10.0¢	9.3¢
Light industrial and commercial	8.6	8.0
Large industrial	5.3	4.9
Other	17.7	10.8

Average Annual Kilowatt-Hour Use Per Residential Customer

	9,919	10,571
--	-------	--------

Peak One-Hour Demand Integrated System (megawatts)

	9,441	10,072
--	-------	--------

Lines In Service

Distribution (kilometres)	58,518	58,317
Transmission (circuit kilometres)	19,792	19,322

Water Inflows (% of average)

	102	95
--	-----	----

Generating Capacity in MW

Hydroelectric*	Megawatts (MW)
Aberfeldie.....	25.0
Alouette.....	9.0
Ash River.....	28.0
Bridge River.....	478.0
Cheakamus.....	158.0
† Clayton Falls.....	2.0
Clowhom.....	33.0
Elk River.....	12.0
Falls River.....	7.0
V GM Shrum.....	2,730.0
John Hart.....	126.0
Jordan.....	170.0
Kootenay Canal.....	583.0
Ladore.....	47.0
La Joie.....	25.0
R Lake Bunzten.....	76.8
Mica.....	2,318.0
V Peace Canyon.....	694.0
R Puntledge.....	24.0
V Revelstoke.....	2,480.0
Ruskin.....	105.0
R Seton.....	48.0
Seven Mile.....	805.0
R Shuswap.....	6.0
Spillimacheen.....	4.0
V R Stave Falls.....	91.0
R Strathcona.....	64.0
R Wahleach.....	65.0
Waneta [1/3].....	164.4
Walter Hardman.....	8.0
Whatshan.....	54.0
	<u>11,440.2</u>
Thermal	
Burrard.....	950.0
Fort Nelson.....	73.0
Prince Rupert.....	46.0
	<u>1,069.0</u>
Diesel Generation	
† Ah-Sin-Heek.....	6.5
† Anahim Lake.....	3.6
† Atlin.....	2.7
† Bella Bella.....	4.9
† Dease Lake.....	3.5
† Eddontenajon.....	2.3
† Elhlateese.....	0.2
† Hartley Bay.....	1.1
† Kwadacha.....	1.8
† Masset.....	12.9
† McBride.....	6.0
† Sandspit.....	10.2
† Telegraph Creek.....	1.8
† Tsay Keh Dene.....	1.1
† Toad River.....	0.6
	<u>59.2</u>
Total Capacity	12,568.4

* Maximum sustained generating capacity

R Has recreational area

V Has visitor centre

† Non-integrated area

Generation capacity figures may vary slightly from those stated in BC Hydro's Annual Report due to recent plant upgrades/updates. For capacity in kW see BC Hydro's Annual Financial Report to the British Columbia Utilities Commission.

¹ Regular full time equivalents (FTEs) (actual regular hours worked during the year divided by expected regular working hours during the year) for BC Hydro, excluding subsidiaries.

² Average Revenues are before regulatory transfers.