

This report summarizes all unintentional illicit drug overdose deaths in British Columbia (accidental and undetermined) that occurred between January 1, 2007 and January 31, 2017, inclusive. It includes confirmed and suspected illicit overdose deaths. *Please note that data is subject to change as investigations are concluded.*

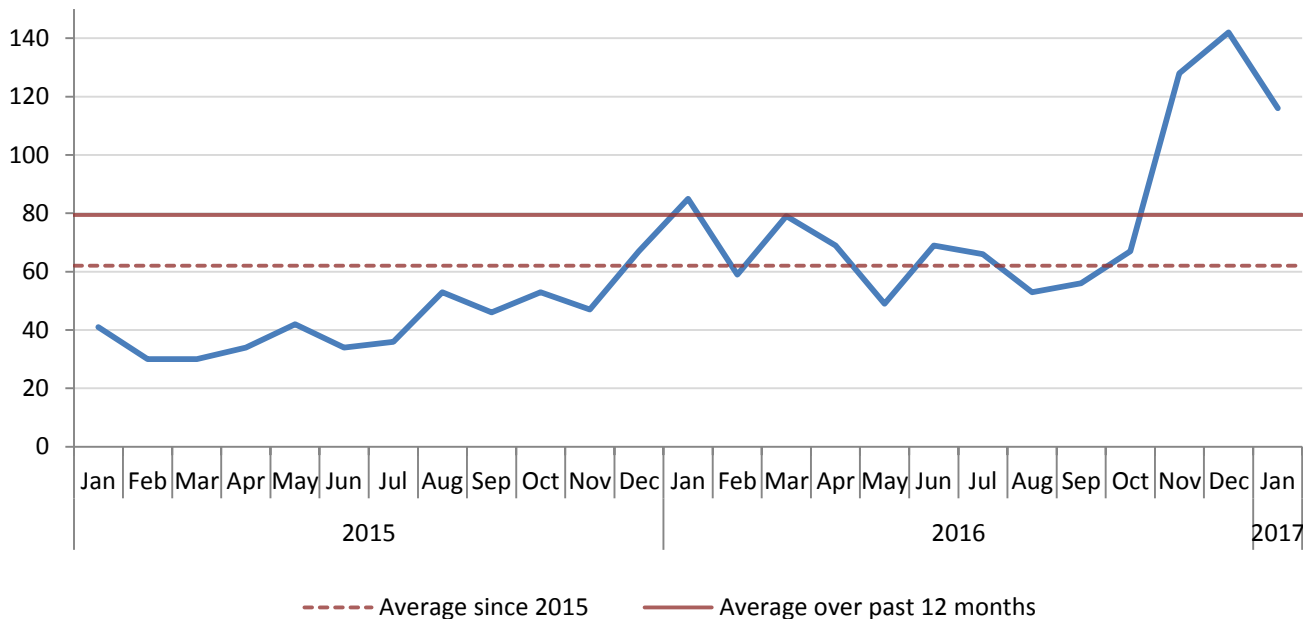
Inclusion Criteria: The illicit drug overdose category includes the following:

- Street drugs (Controlled and illegal drugs: heroin, cocaine, MDMA, methamphetamine, illicit fentanyl etc.)
- Medications not prescribed to the decedent but obtained/purchased on the street or from unknown means
- Origin of drug not known or combinations of the above

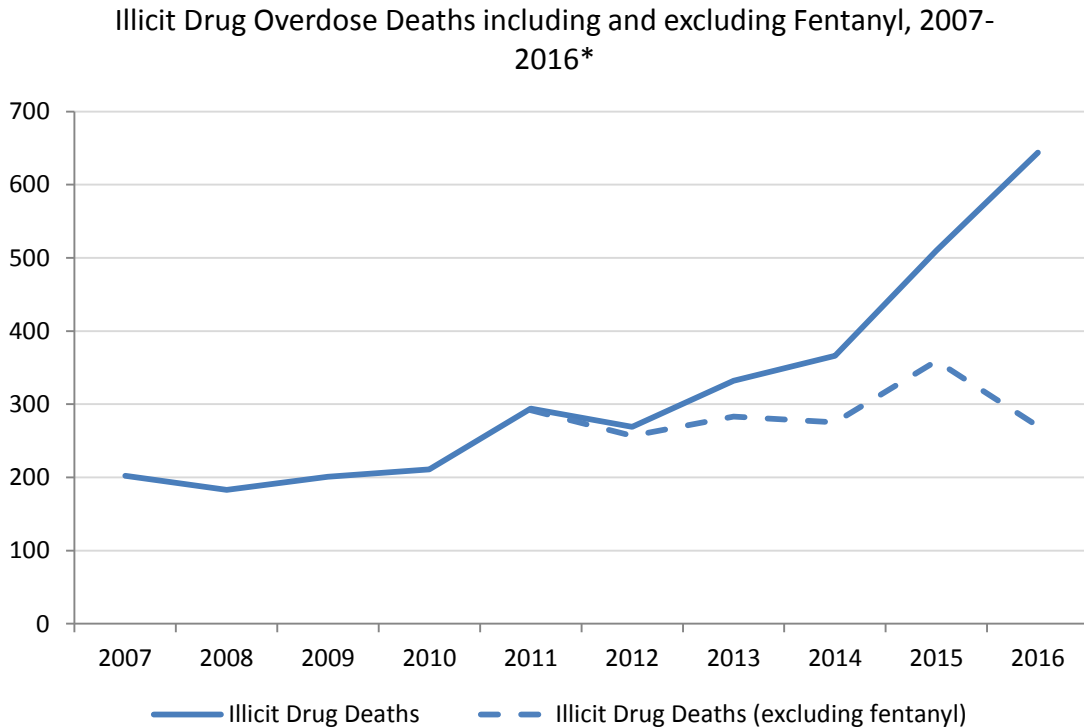
Summary

- There were 116 apparent illicit drug overdose deaths in Jan 2017. This is a 36.5% increase over the number of death occurring in Jan 2016 (85).
- The number of illicit drug overdose deaths in Jan 2017 (116) is down from Dec 2016 (142) but is still more than double the average number of illicit drug overdose deaths observed prior to the Nov 2016 spike, from Jan 2015 – Oct 2016 (52.9).

Illicit Drug Overdose Deaths by Month, 2015-2017^[2]



- Illicit fentanyl-detected deaths appear to account largely for the increase in illicit drug overdose deaths since 2012 as the number of illicit drug overdose deaths excluding fentanyl-detected has remained relatively stable since 2011 (average of 293 deaths per year).

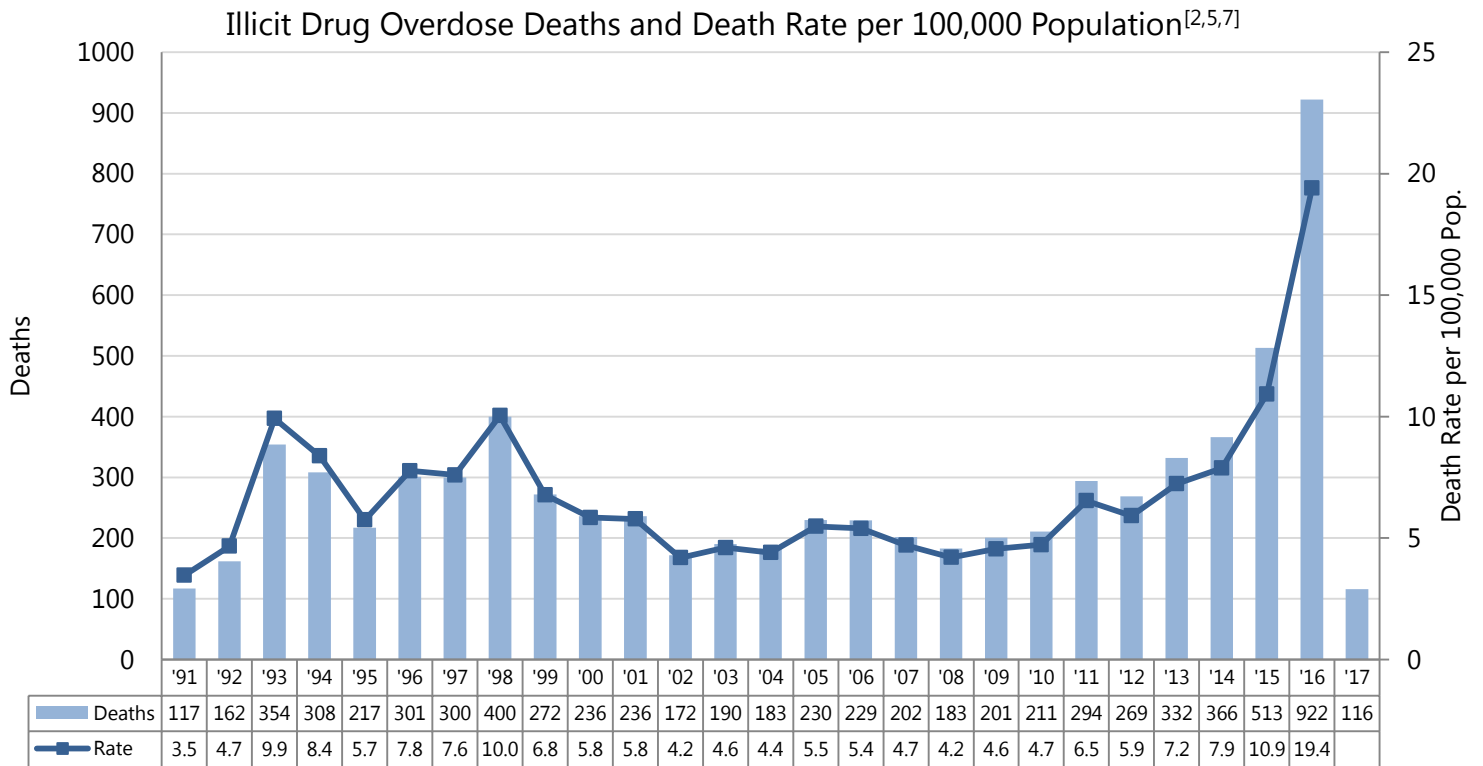


*Data to Oct 2016

- Individuals aged 30-39 and 40-49 have accounted for the largest percentage of illicit drug overdose deaths in Jan 2017 (33.6% and 25.9%, respectively). About 76% of illicit drug overdose deaths were among individuals between the ages of 19-49 years. Males accounted for 80.2% of apparent illicit drug overdose deaths in Jan 2017.
- Saturdays and Sundays were the days of the week most fatal illicit drug overdoses occurred in Jan 2017, accounting for 39.7% of illicit drug overdose deaths.
- Top three townships where fatal illicit drug overdoses occurred in Jan 2017 were Vancouver, Surrey, and Kelowna.
- Vancouver Coastal Health Authority had the highest number (50) of illicit drug overdose deaths in Jan 2017 which makes up 43.1% of all illicit drug overdose deaths during that period.
- Vancouver Coastal Health Authority had the highest rate of illicit drug overdose deaths (21.6 deaths per 100,000 individuals) in 2016 among all health authorities and Interior Health Authority saw the largest increase in rate from 2015 (145% increase). Overall, the rate of illicit drug overdose deaths in BC increased 78.0% in 2016 compared with 2015.

- Interior, Fraser, and Northern Health Authorities saw declines in the number of illicit drug overdose deaths in Jan 2017 from Dec 2016. In contrast, Vancouver Coastal and Vancouver Island Health Authorities matched or surpassed previous monthly highs.
- In Jan 2017, 92.2% of illicit drug overdose deaths occurred inside (50% private residences, 42.2% other inside locations) and 7.8% occurred outside in vehicles, sidewalks, streets, parks, etc.
- There were no deaths at supervised consumption or drug overdose prevention sites.
- The data for the proportion of illicit drug overdose deaths for which fentanyl was detected will be updated in March, 2017 to allow time for toxicology tests to be completed for the 2016 year.

BC Data and Rates



Illicit Drug Overdose Deaths by Month, British Columbia, 2007-2017^[2]

Month	2007	2008	2009	2010	2011	2012	2013	2014	2015	2016	2017
Jan	15	18	23	16	24	20	20	22	41	85	116
Subtotal	15	18	23	16	24	20	20	22	41	85	116
Feb	14	8	15	14	24	17	21	39	30	59	-
Mar	19	17	10	15	25	25	33	28	30	79	-
Apr	24	18	8	9	26	31	31	29	34	69	-
May	10	18	19	22	22	19	28	40	42	49	-
Jun	18	18	16	21	22	25	25	28	34	69	-
Jul	11	24	19	23	33	29	38	25	36	66	-
Aug	21	16	27	24	22	19	21	37	53	53	-
Sep	14	12	16	20	22	16	28	31	46	56	-
Oct	15	10	13	18	23	19	19	35	53	67	-
Nov	19	9	18	18	27	28	31	28	47	128	-
Dec	22	15	17	11	24	21	37	24	67	142	-
Total	202	183	201	211	294	269	332	366	513	922	116
Average	16.8	15.3	16.8	17.6	24.5	22.4	27.7	30.5	42.8	76.8	116

BC Data by Place of Injury

Illicit Drug Overdose Deaths by Place of Injury, BC, 2016-2017 ^[2]		
	2016	2017
Inside:		
Private Residence	565	58
Other Residence	224	44
Other Inside	41	5
Outside	83	9
Unknown	9	0
Total	922	116

Preliminary circumstances suggest that the majority of fatal illicit drug overdoses in 2016 occurred in inside locations (92.2%) while (7.8%) occurred outside.

Private Residence – includes driveways garages, trailer homes and either decedent’s own or another’s residence.

Other Residence - includes hotels, motels, rooming houses, shelters, etc.

Other Inside – includes facilities, occupational sites, public buildings, and businesses.

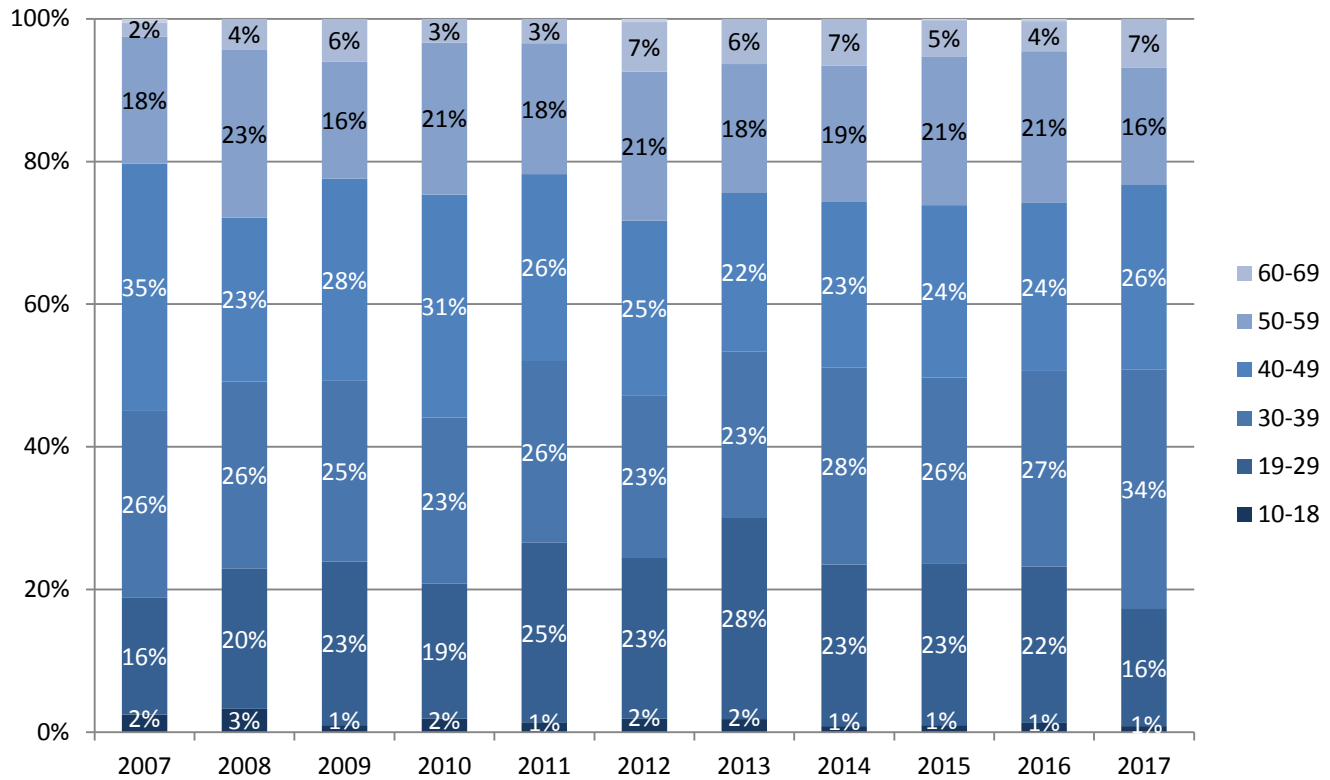
Outside – includes vehicles, streets, sidewalks, parking lots, public parks, wooded areas, and campgrounds

BC Data by Gender/Age:

Illicit Drug Overdose Deaths by Gender, 2007-2017 ^[2]											
Gender	2007	2008	2009	2010	2011	2012	2013	2014	2015	2016	2017
Female	47	49	55	49	82	75	79	86	100	178	23
Male	155	134	146	162	212	194	253	280	413	744	93
Total	202	183	201	211	294	269	332	366	513	922	116

Illicit Drug Overdose Deaths by Age Group, 2007-2017 ^[2]											
Age Group	2007	2008	2009	2010	2011	2012	2013	2014	2015	2016	2017
10-18	5	6	2	4	4	5	6	3	5	12	1
19-29	33	36	46	40	74	61	94	83	116	202	19
30-39	53	48	51	49	75	61	77	101	134	253	39
40-49	70	42	57	66	77	66	74	85	124	217	30
50-59	36	43	33	45	54	56	60	70	107	196	19
60-69	4	8	12	7	10	19	21	24	26	39	8
70-79	1	0	0	0	0	1	0	0	1	3	0
Total	202	183	201	211	294	269	332	366	513	922	116

Illicit Drug Overdose Deaths by Age Group, 2007-2017^[2]



Age-Specific Illicit Drug Overdose Death Rates per 100,000, 2007-2016^[5,7]

Age Group	2007	2008	2009	2010	2011	2012	2013	2014	2015	2016
10-18	1.0	1.3	0.4	0.9	0.9	1.1	1.3	0.7	1.1	2.7
19-29	5.2	5.5	6.9	5.9	10.9	8.9	13.7	11.9	16.6	28.6
30-39	9.1	8.2	8.6	8.3	12.6	10.1	12.6	16.2	21.3	39.5
40-49	10.1	6.1	8.3	9.7	11.4	9.9	11.3	13.2	19.5	34.3
50-59	5.8	6.8	5.1	6.8	8.0	8.2	8.6	10.0	15.2	27.9
60-69	1.0	1.8	2.6	1.5	2.0	3.7	3.9	4.3	4.5	6.5
70-79	0.4	0.0	0.0	0.0	0.0	0.3	0.0	0.0	0.3	0.9
Total	4.7	4.2	4.6	4.7	6.5	5.9	7.2	7.9	11.0	19.5

BC Data by Day of Week:

Illicit Drug Overdose Deaths by Day of Week of Injury, British Columbia, 2007-2017 ^[2,3]											
Day	2007	2008	2009	2010	2011	2012	2013	2014	2015	2016	2017
Monday	25	21	15	29	39	32	33	38	68	100	9
Tuesday	23	24	24	26	27	35	42	37	61	108	14
Wednesday	24	25	31	30	35	37	35	48	67	119	16
Thursday	24	25	27	33	51	34	41	59	72	138	16
Friday	38	31	28	33	42	32	56	60	79	131	15
Saturday	34	34	34	35	53	46	73	72	87	166	25
Sunday	34	23	42	25	47	53	52	52	79	160	21
Total	202	183	201	211	294	269	332	366	513	922	116

BC Data by Township of Injury:

Illicit Drug Overdose Deaths by Top Townships of Injury, 2007-2017* ^[2,4]											
Township	2007	2008	2009	2010	2011	2012	2013	2014	2015	2016	2017
Vancouver	59	38	60	42	69	65	80	99	134	215	45
Surrey	22	20	23	32	42	44	36	43	76	110	9
Victoria	19	29	13	13	17	17	25	20	19	66	7
Kelowna	6	2	5	9	14	8	12	12	19	47	8
Kamloops	11	7	7	10	2	5	8	7	7	41	5
Abbotsford	3	4	4	10	16	7	10	7	27	39	5
Burnaby	9	12	8	9	10	10	13	11	16	36	2
Langley	3	5	2	3	9	5	10	10	10	30	3
Nanaimo	2	2	6	4	8	6	20	16	19	28	4
Maple Ridge	5	2	6	4	4	5	10	14	29	27	0
Prince George	5	2	4	1	6	10	7	10	12	17	0
Vernon	3	1	4	6	7	1	11	6	8	13	1
Other Township	55	59	59	68	90	86	90	111	137	253	27
Total	202	183	201	211	294	269	332	366	513	922	116

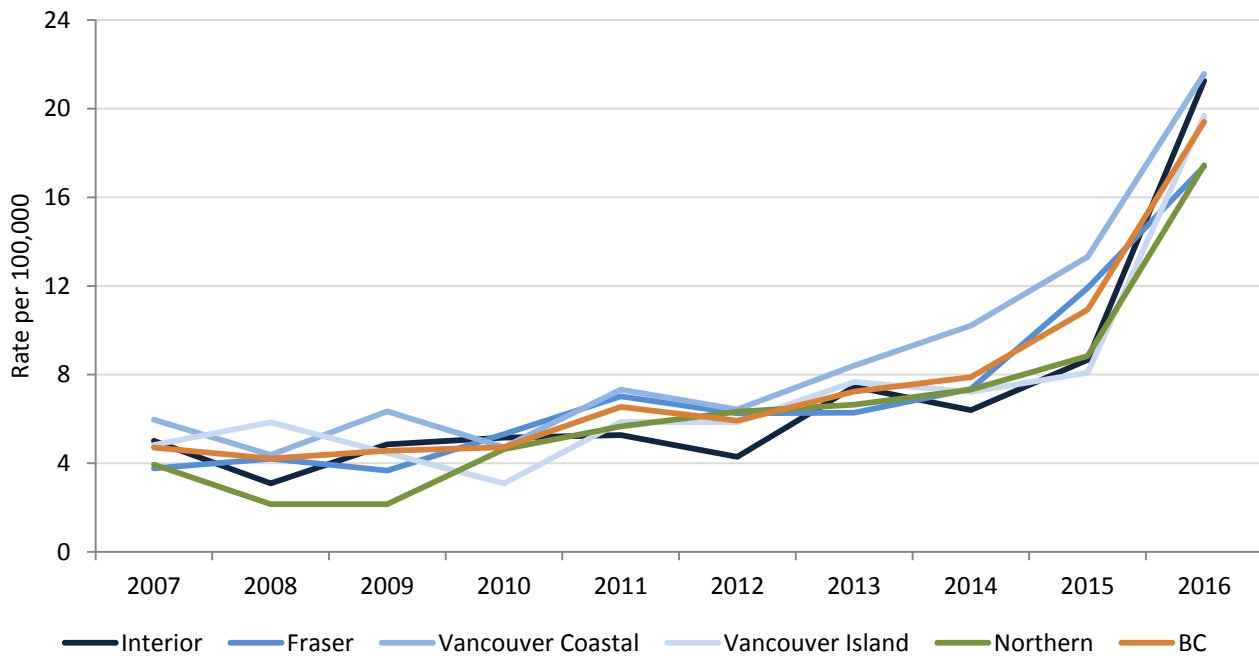
*sorted by 2016 totals

Health Authority Data:

Illicit Drug Overdose Deaths by Health Authority, 2007-2017 ^[2,4,6]											
HA	2007	2008	2009	2010	2011	2012	2013	2014	2015	2016	2017
Interior	35	22	35	37	38	31	54	47	64	158	18
Fraser	57	65	58	86	115	104	106	126	208	310	29
Vancouver Coastal	64	47	69	52	81	72	95	117	154	252	50
Vancouver Island	35	43	33	23	44	44	58	55	62	153	18
Northern	11	6	6	13	16	18	19	21	25	49	1
BC	202	183	201	211	294	269	332	366	513	922	116

Illicit Drug Overdose Death Rates by Health Authority per 100,000, 2007-2016 ^[4-7]											
HA	2007	2008	2009	2010	2011	2012	2013	2014	2015	2016	
Interior	5.0	3.1	4.9	5.2	5.3	4.3	7.5	6.4	8.7	21.3	
Fraser	3.8	4.2	3.7	5.3	7.0	6.2	6.3	7.4	11.9	17.4	
Vancouver Coastal	6.0	4.4	6.3	4.7	7.3	6.4	8.4	10.2	13.3	21.6	
Vancouver Island	4.8	5.9	4.5	3.1	5.9	5.8	7.7	7.2	8.1	19.7	
Northern	3.9	2.1	2.1	4.6	5.7	6.3	6.6	7.3	8.8	17.4	
BC	4.7	4.2	4.6	4.7	6.5	5.9	7.2	7.9	10.9	19.4	

Illicit Drug Overdose Death Rates by Health Authority, 2007-2016^[4-7]



Illicit Drug Overdose Deaths by Month of Death and Health Authority, 2016-2017 ^[4,6]							
Year	Month	Interior	Fraser	Vancouver		Northern	Total
				Coastal	Island		
2016	Jan	16	29	22	14	4	85
	Feb	9	20	16	12	2	59
	Mar	12	30	14	15	8	79
	Apr	9	26	15	14	5	69
	May	10	21	6	8	4	49
	Jun	10	29	19	7	4	69
	Jul	8	24	16	15	3	66
	Aug	6	18	17	10	2	53
	Sep	14	16	13	11	2	56
	Oct	15	15	20	13	4	67
	Nov	19	44	46	18	1	128
	Dec	30	38	48	16	10	142
2017	Jan	18	29	50	18	1	116
Total		176	339	302	171	50	1038
Average		13.5	26.1	23.2	13.2	3.8	79.8

Illicit Drug Overdose Deaths by Health Services Delivery Area, 2007-2017 ^[2,4,6]											
HSDA	2007	2008	2009	2010	2011	2012	2013	2014	2015	2016	2017
East Kootenay	2	2	1	0	1	2	4	4	2	10	0
Kootenay Boundary	4	0	2	3	4	4	2	3	7	10	1
Okanagan	13	9	15	18	28	16	33	27	42	75	10
Thompson Cariboo	16	11	17	16	5	9	15	13	13	63	7
Fraser East	9	14	9	22	31	20	20	16	41	61	9
Fraser North	19	22	23	26	25	30	35	51	74	96	7
Fraser South	29	29	26	38	59	54	51	59	93	153	13
Richmond	0	1	3	4	4	1	3	3	5	11	1
Vancouver	59	38	60	42	69	65	80	99	134	215	45
North Shore/Coast Garibaldi	5	8	6	6	8	6	12	15	15	26	4
South Vancouver Island	21	31	15	13	17	20	26	23	23	75	7
Central Vancouver Island	8	6	13	6	17	20	24	25	31	55	8
North Vancouver Island	6	6	5	4	10	4	8	7	8	23	3
Northwest	2	2	0	3	1	0	6	2	6	12	0
Northern Interior	7	3	5	7	8	12	8	11	15	20	1
Northeast	2	1	1	3	7	6	5	8	4	17	0
Total	202	183	201	211	294	269	332	366	513	922	116

Illicit Drug Overdose Death Rates by Health Services Delivery Area per 100,000, 2007-2016^[4-7]

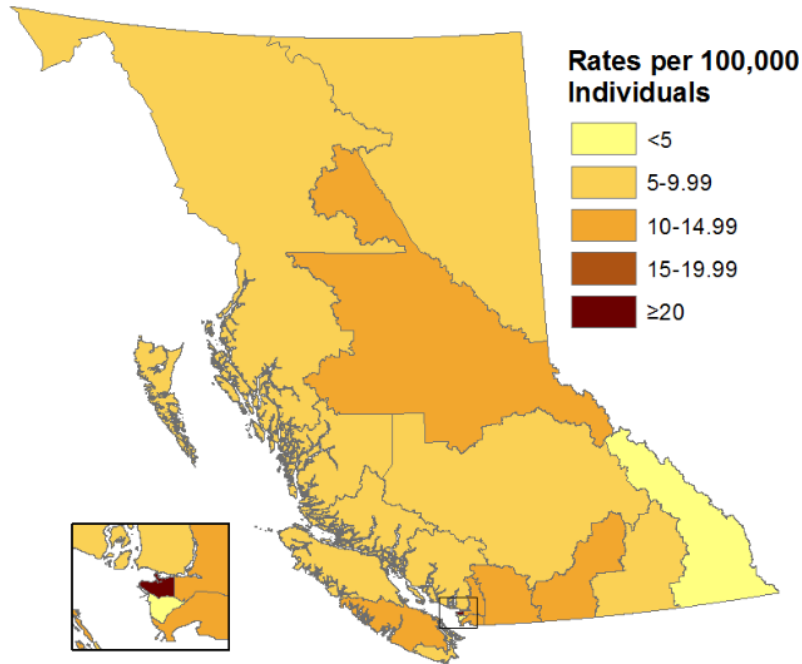
HSDA	2007	2008	2009	2010	2011	2012	2013	2014	2015	2016
East Kootenay	2.7	2.6	1.3	0.0	1.3	2.6	5.2	5.1	2.6	12.8
Kootenay Boundary	5.2	0.0	2.6	3.9	5.1	5.1	2.6	3.8	8.9	12.7
Okanagan	3.9	2.6	4.3	5.2	8.1	4.6	9.4	7.6	11.7	20.7
Thompson Cariboo	7.5	5.1	7.8	7.4	2.3	4.1	6.8	5.9	5.8	28.1
Fraser East	3.3	5.1	3.2	7.8	10.9	7.0	7.0	5.5	13.8	20.3
Fraser North	3.3	3.8	3.8	4.2	4.0	4.8	5.5	7.9	11.3	14.5
Fraser South	4.3	4.2	3.7	5.3	8.0	7.2	6.7	7.6	11.7	18.7
Richmond	0.0	0.5	1.6	2.0	2.0	0.5	1.5	1.5	2.4	5.2
Vancouver	9.5	6.1	9.6	6.6	10.9	10.1	12.3	15.0	20.1	32.0
North Shore/Coast Garibaldi	1.9	3.0	2.2	2.2	2.9	2.2	4.3	5.3	5.3	9.2
South Vancouver Island	5.9	8.6	4.1	3.5	4.6	5.4	7.0	6.2	6.1	19.6
Central Vancouver Island	3.2	2.3	5.0	2.3	6.5	7.6	9.1	9.4	11.6	20.2
North Vancouver Island	5.2	5.1	4.2	3.4	8.3	3.3	6.6	5.8	6.6	18.8
Northwest	2.7	2.7	0.0	4.1	1.4	0.0	8.2	2.7	8.4	17.1
Northern Interior	5.0	2.1	3.6	5.0	5.6	8.4	5.6	7.7	10.7	14.5
Northeast	3.1	1.5	1.5	4.5	10.4	8.6	7.1	11.2	5.6	23.5
Total	4.7	4.2	4.6	4.7	6.5	5.9	7.2	7.9	10.9	19.4

Notes:

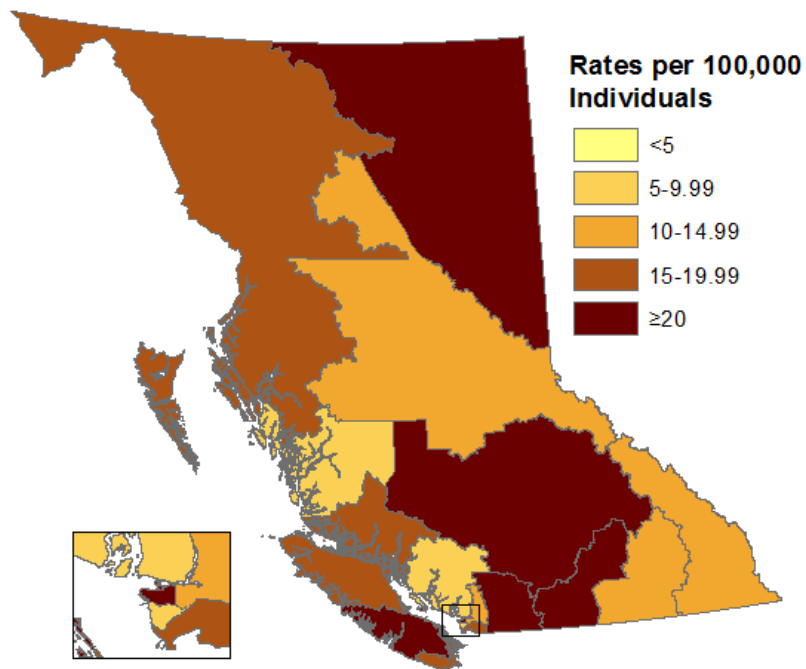
1. The BCCS operates in a live database environment. Some data for more recent years is based on preliminary circumstances and is subject to change as investigations are concluded. Data are not directly comparable to published counts from previous years.
2. 2017 data includes January 1, 2017 to January 31, 2017.
3. Date of death was used in tables where date of injury was unknown.
4. Death township was used in 5 cases of unknown or out of province injury township.
5. Population estimates were taken from:
<http://www.bcstats.gov.bc.ca/StatisticsBySubject/Demography/PopulationEstimates.aspx>
6. Health Region breakdowns can be found at:
<http://www.bcstats.gov.ca/statisticsbysubject/geography/referencemaps/health.aspx>
7. 2017 rates were not estimated for this report due to the short time frame.

Illicit Drug Overdose Death Rate Maps by Health Services Delivery Area

2015 Illicit Drug Overdose Death Rates by Health Services Delivery Area



2016 Illicit Drug Overdose Death Rates by Health Services Delivery Area



References for health regions can be found at:

<http://www.bcstats.gov.bc.ca/statisticsbysubject/geography/referencemaps/health.aspx>.