

This report summarizes all unintentional illicit drug overdose deaths in British Columbia (accidental and undetermined) that occurred between January 1, 2007 and July 31, 2017, inclusive. It includes confirmed and suspected illicit overdose deaths. *Please note that data is subject to change as investigations are concluded.*

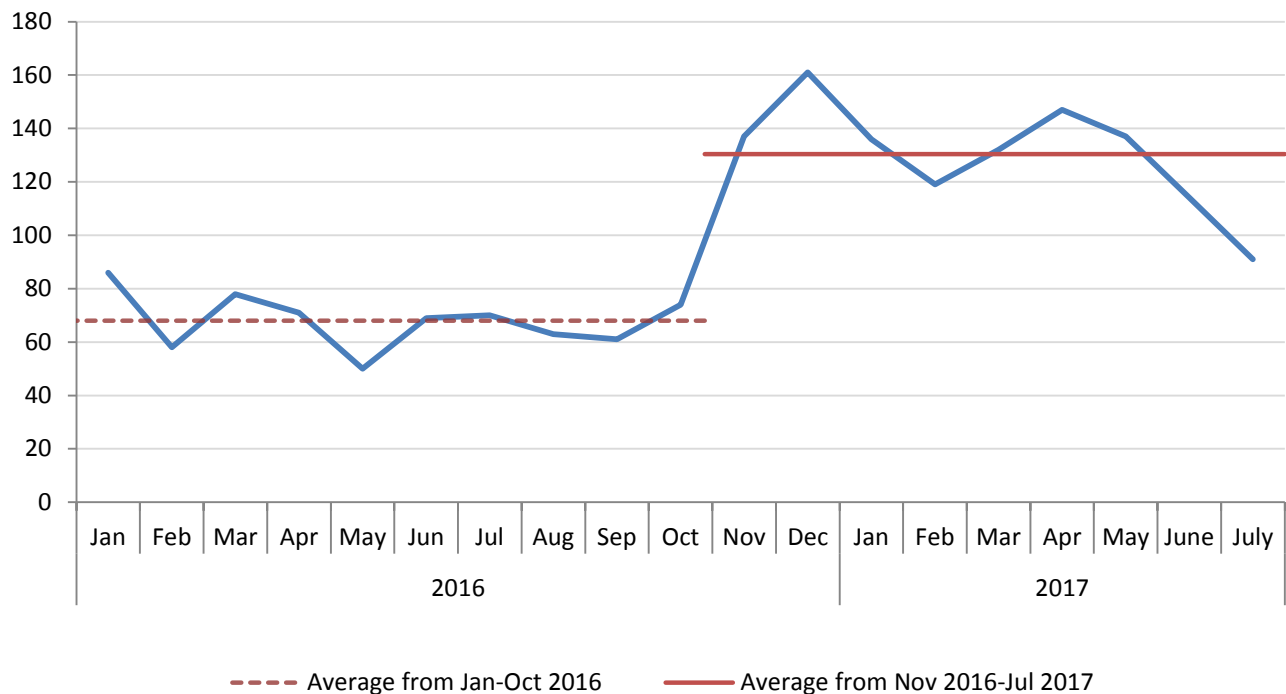
**Inclusion Criteria:** The illicit drug overdose category includes the following:

- Street drugs (Controlled and illegal drugs: heroin, cocaine, MDMA, methamphetamine, illicit fentanyl etc.)
- Medications not prescribed to the decedent but obtained/purchased on the street, from unknown means or where origin of drug not known
- Combinations of the above with prescribed medications

**Summary**

- There were 91 suspected drug overdose deaths in July 2017. This is a 30% increase over the number of death occurring in July 2016 (70).
- The number of illicit drug overdose deaths in July 2017 (91) equates to about 2.9 deaths per day for the month.

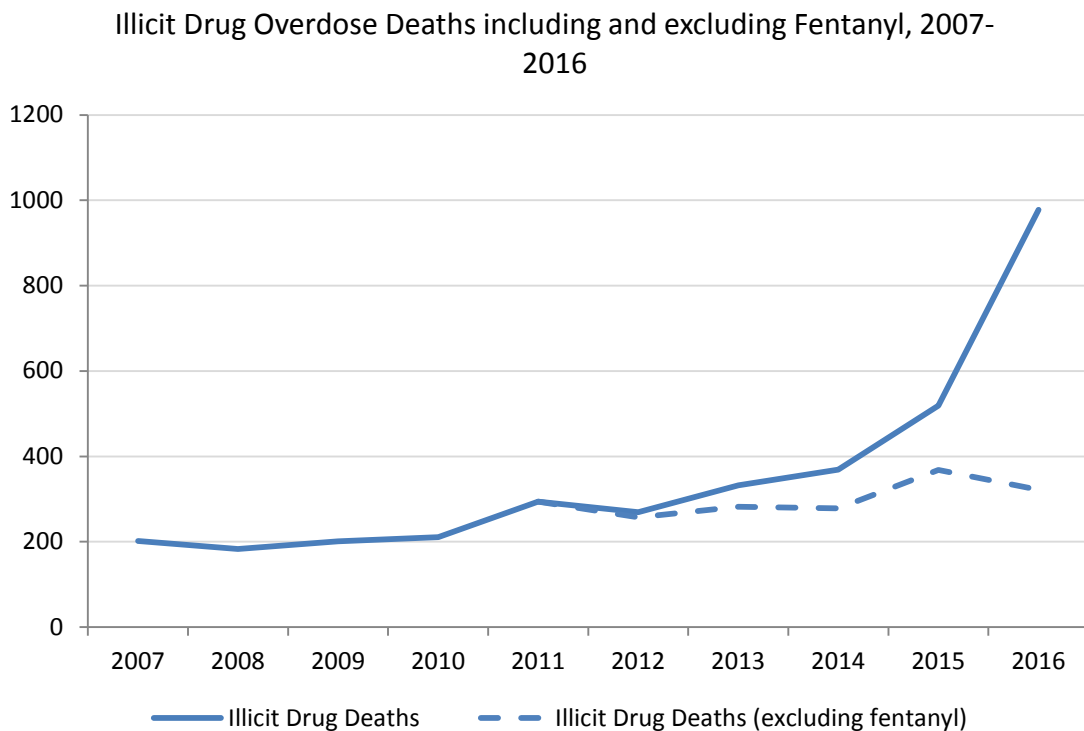
Illicit Drug Overdose Deaths by Month, 2016-2017<sup>[2]</sup>



- In 2017, individuals aged 30-59 have accounted for the largest percentage of illicit drug overdose deaths (73.6%). Males accounted for 82.2% of these suspected illicit drug overdose deaths over the same period.
- The three townships experiencing the highest number of illicit drug overdoses in 2017 to date are Vancouver, Surrey, and Victoria.
- Fraser and Vancouver Coastal Health Authority have had the highest number of illicit drug overdose deaths (291 and 270 deaths, respectively) to date in 2017, making up 64% of all illicit drug overdose deaths during this period.
- Vancouver Coastal Health Authority has the highest rate of illicit drug overdose deaths (39.2 deaths per 100,000 individuals) and also experienced the largest increase in rate from 2016 (66% increase) among all the health authorities. Overall, the rate of illicit drug overdose deaths in BC increased 52% to 31.3 deaths per 100,000 individuals from the 2016 rate of 20.6 deaths per 100,000 individuals.
- Rates of illicit drug overdose deaths are highest in Vancouver, Okanagan, Fraser East, North Vancouver Island, and Central Vancouver Island Health Services Delivery Areas.
- All health authorities except Interior saw a decline in the number of illicit drug overdose deaths in July 2017 compared to June 2017. The number of illicit drug overdose deaths in Interior Health Authority increased from 19 in June 2017 to 22 in July 2017.
- 89% of illicit drug overdose deaths occurred inside (58% private residences, 31% other inside locations) and 10.4% occurred outside in vehicles, sidewalks, streets, parks, etc.
- There were no deaths at supervised consumption or drug overdose prevention sites.

**Type of Drugs:**

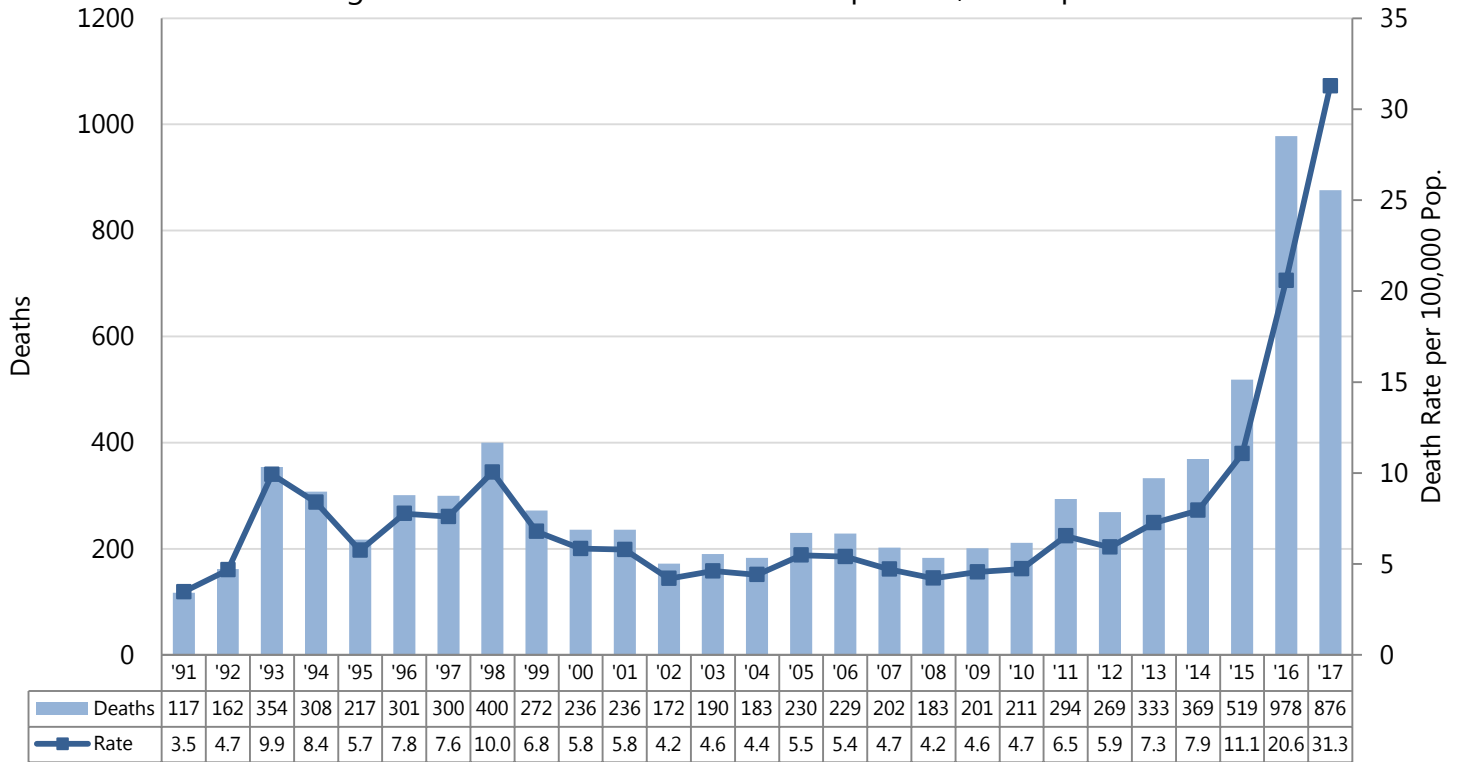
- Preliminary data suggests that the proportion of illicit drug overdose deaths for which illicit fentanyl was detected (alone or in combination with other drugs) was 67% in 2016 and 81% in Jan-Jul 2017.
- Illicit fentanyl-detected deaths appear to account for the increase in illicit drug overdose deaths since 2012 as the number of illicit drug overdose deaths excluding fentanyl -detected has remained relatively stable since 2011 (average of 300 deaths per year). *This data is subject to change as further analogue testing becomes available.*



- A review of completed cases from 2015 and 2016 indicates that the top four detected drugs relevant to illicit drug overdose deaths were cocaine (48.7%), fentanyl (46.9%), heroin (35.3%) and methamphetamine/amphetamine (30.1%).

**BC Data and Rates**

Illicit Drug Overdose Deaths and Death Rate per 100,000 Population [2,5]



Illicit Drug Overdose Deaths by Month, British Columbia, 2007-2017 <sup>[2]</sup>											
Month	2007	2008	2009	2010	2011	2012	2013	2014	2015	2016	2017
Jan	15	18	23	16	24	20	20	23	42	86	136
Feb	14	8	15	14	24	17	21	39	31	58	119
Mar	19	17	10	15	25	25	33	28	31	78	132
Apr	24	18	8	9	26	31	31	29	34	71	147
May	10	18	19	22	22	19	28	40	41	50	137
Jun	18	18	16	21	22	25	25	29	34	69	114
Jul	11	24	19	23	33	29	38	25	37	70	91
<b>Subtotal</b>	<b>111</b>	<b>121</b>	<b>110</b>	<b>120</b>	<b>176</b>	<b>166</b>	<b>196</b>	<b>213</b>	<b>250</b>	<b>482</b>	<b>876</b>
Aug	21	16	27	24	22	19	21	37	52	63	-
Sep	14	12	16	20	22	16	28	31	47	61	-
Oct	15	10	13	18	23	19	19	35	53	74	-
Nov	19	9	18	18	27	28	31	28	49	137	-
Dec	22	15	17	11	24	21	38	25	68	161	-
<b>Total</b>	<b>202</b>	<b>183</b>	<b>201</b>	<b>211</b>	<b>294</b>	<b>269</b>	<b>333</b>	<b>369</b>	<b>519</b>	<b>978</b>	<b>876</b>
<b>Average</b>	<b>16.8</b>	<b>15.3</b>	<b>16.8</b>	<b>17.6</b>	<b>24.5</b>	<b>22.4</b>	<b>27.8</b>	<b>30.8</b>	<b>43.3</b>	<b>81.5</b>	<b>125.1</b>

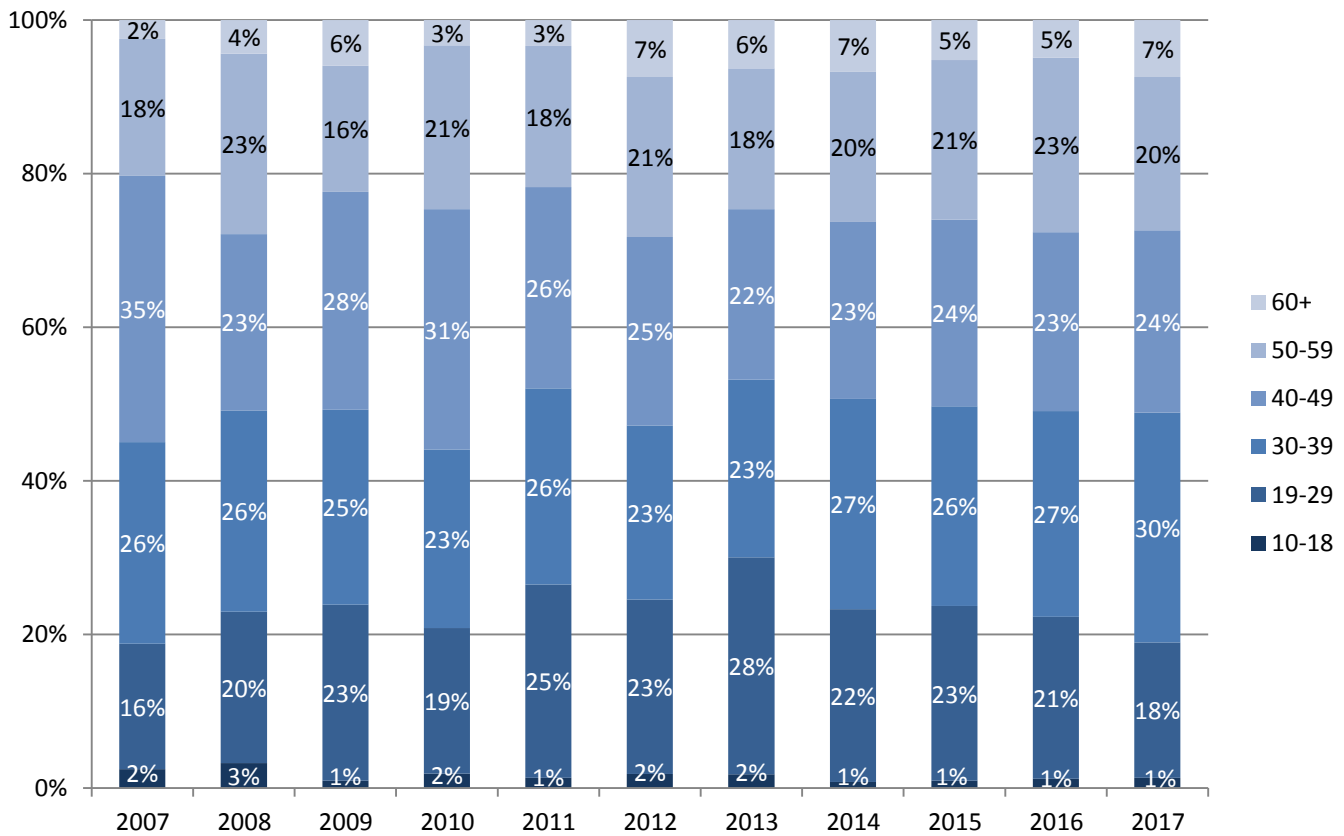
**BC Data by Gender/Age:**

<b>Illicit Drug Overdose Deaths by Gender, 2007-2017<sup>[2]</sup></b>											
Gender	2007	2008	2009	2010	2011	2012	2013	2014	2015	2016	2017
Female	47	49	55	49	82	75	79	86	102	194	156
Male	155	134	146	162	212	194	254	283	417	784	720
<b>Total</b>	<b>202</b>	<b>183</b>	<b>201</b>	<b>211</b>	<b>294</b>	<b>269</b>	<b>333</b>	<b>369</b>	<b>519</b>	<b>978</b>	<b>876</b>

<b>Illicit Drug Overdose Deaths by Age Group, 2007-2017<sup>[2]</sup></b>											
Age Group	2007	2008	2009	2010	2011	2012	2013	2014	2015	2016	2017
10-18	5	6	2	4	4	5	6	3	5	12	12
19-29	33	36	46	40	74	61	94	83	118	206	154
30-39	53	48	51	49	75	61	77	101	135	262	262
40-49	70	42	57	66	77	66	74	85	126	228	208
50-59	36	43	33	45	54	56	61	72	108	222	175
60-69	4	8	12	7	10	19	21	25	26	45	60
70-79	1	0	0	0	0	1	0	0	1	3	5
<b>Total</b>	<b>202</b>	<b>183</b>	<b>201</b>	<b>211</b>	<b>294</b>	<b>269</b>	<b>333</b>	<b>369</b>	<b>519</b>	<b>978</b>	<b>876</b>

*Note: The age range of decedents of illicit drug overdose between 2007-2017 ranged from 13 to 76 years of age.*

Illicit Drug Overdose Deaths by Age Group, 2007-2017



Age-Specific Illicit Drug Overdose Death Rates per 100,000, 2007-2017<sup>[5,7]</sup>

Age Group	2007	2008	2009	2010	2011	2012	2013	2014	2015	2016	2017
10-18	1.0	1.3	0.4	0.9	0.9	1.1	1.3	0.7	1.1	2.7	4.7
19-29	5.2	5.5	6.9	5.9	10.9	8.9	13.7	11.9	16.8	29.2	37.6
30-39	9.1	8.2	8.6	8.3	12.6	10.1	12.6	16.2	21.4	40.9	69.0
40-49	10.1	6.1	8.3	9.7	11.4	9.9	11.3	13.2	19.8	36.0	56.2
50-59	5.8	6.8	5.1	6.8	8.0	8.2	8.8	10.3	15.3	31.6	42.9
60-69	1.0	1.8	2.6	1.5	2.0	3.7	3.9	4.5	4.5	7.5	16.9
70-79	0.4	0.0	0.0	0.0	0.0	0.3	0.0	0.0	0.3	0.9	2.3
<b>Total</b>	<b>4.7</b>	<b>4.2</b>	<b>4.6</b>	<b>4.7</b>	<b>6.5</b>	<b>5.9</b>	<b>7.3</b>	<b>7.9</b>	<b>11.1</b>	<b>20.6</b>	<b>31.3</b>

**BC Data by Township of Injury:**

Illicit Drug Overdose Deaths by Top Townships of Injury, 2007-2017* [2,4]											
Township	2007	2008	2009	2010	2011	2012	2013	2014	2015	2016	2017
Vancouver	59	38	60	42	69	65	80	101	136	231	226
Surrey	22	20	23	33	42	44	36	43	76	119	101
Victoria	19	29	13	13	17	17	25	20	21	67	57
Kelowna	6	2	5	9	14	8	12	12	19	47	50
Abbotsford	3	4	4	10	16	7	10	7	26	39	33
Burnaby	9	12	8	9	10	10	13	12	16	39	30
Kamloops	11	7	7	10	2	5	8	7	7	42	27
Nanaimo	2	2	6	4	8	6	20	16	19	28	24
Maple Ridge	5	2	6	4	4	5	10	14	29	27	22
Langley	3	6	2	3	10	5	10	10	10	30	20
Chilliwack	3	4	2	2	8	8	6	6	10	12	16
Vernon	3	1	4	6	7	1	11	6	8	12	16
Coquitlam	2	2	5	2	3	6	1	10	11	13	16
Richmond	0	1	3	4	4	1	3	3	6	14	16
Other Township	55	53	53	60	80	81	88	102	125	258	222
<b>Total</b>	<b>202</b>	<b>183</b>	<b>201</b>	<b>211</b>	<b>294</b>	<b>269</b>	<b>333</b>	<b>369</b>	<b>519</b>	<b>978</b>	<b>876</b>

\*sorted by 2017 totals

**BC Data by Day of Week:**

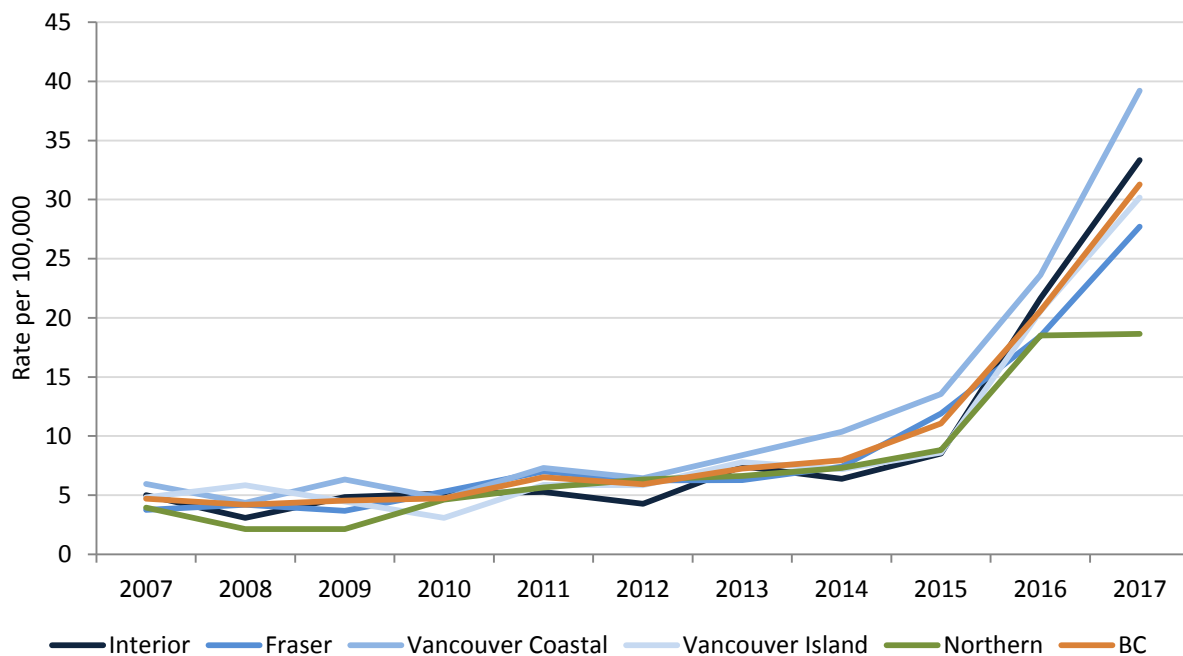
Illicit Drug Overdose Deaths by Day of Week of Injury, British Columbia, 2007-2017 <sup>[2,3]</sup>											
Day	2007	2008	2009	2010	2011	2012	2013	2014	2015	2016	2017
Monday	25	21	15	29	39	32	33	38	68	102	99
Tuesday	23	24	24	26	27	35	42	37	63	117	100
Wednesday	24	25	31	30	35	37	36	49	68	128	120
Thursday	24	25	27	33	51	34	41	59	72	148	131
Friday	38	31	28	33	42	32	57	61	78	139	161
Saturday	34	34	34	35	53	46	72	72	88	181	133
Sunday	34	23	42	25	47	53	52	53	82	163	132
<b>Total</b>	<b>202</b>	<b>183</b>	<b>201</b>	<b>211</b>	<b>294</b>	<b>269</b>	<b>333</b>	<b>369</b>	<b>519</b>	<b>978</b>	<b>876</b>

**Health Authority Data:**

Illicit Drug Overdose Deaths by Health Authority, 2007-2017 <sup>[2,4,6]</sup>											
HA	2007	2008	2009	2010	2011	2012	2013	2014	2015	2016	2017
Interior	35	22	35	37	38	31	54	47	63	161	146
Fraser	57	65	58	86	115	104	106	127	208	329	291
Vancouver Coastal	64	47	69	52	81	72	95	119	157	276	270
Vancouver Island	35	43	33	23	44	44	59	55	66	160	138
Northern	11	6	6	13	16	18	19	21	25	52	31
BC	202	183	201	211	294	269	333	369	519	978	876

Illicit Drug Overdose Death Rates by Health Authority per 100,000, 2007-2017 <sup>[4-7]</sup>											
HA	2007	2008	2009	2010	2011	2012	2013	2014	2015	2016	2017
Interior	5.0	3.1	4.9	5.2	5.3	4.3	7.5	6.4	8.5	21.7	33.3
Fraser	3.8	4.2	3.7	5.3	7.0	6.2	6.3	7.4	11.9	18.5	27.7
Vancouver Coastal	6.0	4.4	6.3	4.7	7.3	6.4	8.4	10.4	13.6	23.6	39.2
Vancouver Island	4.8	5.9	4.5	3.1	5.9	5.8	7.8	7.2	8.6	20.6	30.2
Northern	3.9	2.1	2.1	4.6	5.7	6.3	6.6	7.3	8.8	18.5	18.6
BC	4.7	4.2	4.6	4.7	6.5	5.9	7.3	7.9	11.1	20.6	31.3

Illicit Drug Overdose Death Rates by Health Authority, 2007-2017





Illicit Drug Overdose Deaths by Month of Death and Health Authority and Township, 2016-2017 <sup>[4,6,8]</sup>								
Year	Month	Health Authorities					Township	
		Interior	Fraser	Vancouver Coastal	Vancouver Island	Northern	Vancouver	Surrey
2016	Jan	17	28	22	15	4	19	10
	Feb	10	20	16	10	2	14	8
	Mar	12	30	13	15	8	12	8
	Apr	9	24	15	15	8	10	8
	May	10	21	7	8	4	5	9
	Jun	10	29	19	7	4	16	10
	Jul	9	24	18	16	3	13	12
	Aug	6	23	22	10	2	20	8
	Sep	13	19	14	12	3	13	8
	Oct	15	17	24	16	2	17	5
	Nov	20	46	52	18	1	44	15
	Dec	30	48	54	18	11	48	18
2017	Jan	19	42	54	20	1	49	12
	Feb	19	36	35	24	5	32	15
	Mar	22	43	37	24	6	28	14
	Apr	18	48	54	21	6	43	12
	May	27	55	36	12	7	30	21
	June	19	36	32	23	4	26	13
	July	22	31	22	14	2	18	14
Total		307	620	546	298	83	457	220
Average		16.2	32.6	28.7	15.7	4.4	24.1	11.6

Illicit Drug Overdose Deaths by Health Services Delivery Area, 2007-2017 <sup>[2,4,6]</sup>											
HSDA	2007	2008	2009	2010	2011	2012	2013	2014	2015	2016	2017
East Kootenay	2	2	1	0	1	2	4	4	2	13	4
Kootenay Boundary	4	0	2	3	4	4	2	3	6	9	9
Okanagan	13	9	15	18	28	16	33	27	42	76	96
Thompson Cariboo	16	11	17	16	5	9	15	13	13	63	37
Fraser East	9	14	9	22	31	20	20	16	41	67	66
Fraser North	19	22	23	26	25	30	35	52	74	101	92
Fraser South	29	29	26	38	59	54	51	59	93	161	133
Richmond	0	1	3	4	4	1	3	3	6	14	16
Vancouver	59	38	60	42	69	65	80	101	136	231	226
North Shore/Coast Garibaldi	5	8	6	6	8	6	12	15	15	31	28
South Vancouver Island	21	31	15	13	17	20	26	23	25	76	63
Central Vancouver Island	8	6	13	6	17	20	24	25	30	57	51
North Vancouver Island	6	6	5	4	10	4	9	7	11	27	24
Northwest	2	2	0	3	1	0	6	2	6	12	4
Northern Interior	7	3	5	7	8	12	8	11	15	23	18
Northeast	2	1	1	3	7	6	5	8	4	17	9
<b>Total</b>	<b>202</b>	<b>183</b>	<b>201</b>	<b>211</b>	<b>294</b>	<b>269</b>	<b>333</b>	<b>369</b>	<b>519</b>	<b>978</b>	<b>876</b>

<b>Illicit Drug Overdose Death Rates by Health Services Delivery Area per 100,000, 2007-2017<sup>[4-7]</sup></b>											
HSDA	2007	2008	2009	2010	2011	2012	2013	2014	2015	2016	2017
East Kootenay	2.7	2.6	1.3	0.0	1.3	2.6	5.2	5.1	2.6	16.6	8.8
Kootenay Boundary	5.2	0.0	2.6	3.9	5.1	5.1	2.6	3.8	7.6	11.4	19.8
Okanagan	3.9	2.6	4.3	5.2	8.1	4.6	9.4	7.6	11.7	20.9	44.3
Thompson Cariboo	7.5	5.1	7.8	7.4	2.3	4.1	6.8	5.9	5.8	28.1	28.3
Fraser East	3.3	5.1	3.2	7.8	10.9	7.0	7.0	5.5	13.8	22.3	37.2
Fraser North	3.3	3.8	3.8	4.2	4.0	4.8	5.5	8.1	11.3	15.2	23.3
Fraser South	4.3	4.2	3.7	5.3	8.0	7.2	6.7	7.6	11.7	19.7	27.8
Richmond	0.0	0.5	1.6	2.0	2.0	0.5	1.5	1.5	2.9	6.6	12.8
Vancouver	9.5	6.1	9.6	6.6	10.9	10.1	12.3	15.3	20.4	34.4	57.0
North Shore/Coast Garibaldi	1.9	3.0	2.2	2.2	2.9	2.2	4.3	5.3	5.3	11.0	16.7
South Vancouver Island	5.9	8.6	4.1	3.5	4.6	5.4	7.0	6.2	6.6	19.9	27.9
Central Vancouver Island	3.2	2.3	5.0	2.3	6.5	7.6	9.1	9.4	11.2	20.9	31.9
North Vancouver Island	5.2	5.1	4.2	3.4	8.3	3.3	7.5	5.8	9.1	22.1	33.2
Northwest	2.7	2.7	0.0	4.1	1.4	0.0	8.2	2.7	8.4	17.1	9.3
Northern Interior	5.0	2.1	3.6	5.0	5.6	8.4	5.6	7.7	10.7	16.6	22.0
Northeast	3.1	1.5	1.5	4.5	10.4	8.6	7.1	11.2	5.6	23.5	21.5
<b>Total</b>	<b>4.7</b>	<b>4.2</b>	<b>4.6</b>	<b>4.7</b>	<b>6.5</b>	<b>5.9</b>	<b>7.3</b>	<b>7.9</b>	<b>11.1</b>	<b>20.6</b>	<b>31.3</b>

**BC Data by Place of Injury**

Illicit Drug Overdose Deaths by Place of Injury, BC, 2016-2017 <sup>[2]</sup>		
	2016	2017
Inside:		
Private Residence	602 (61.6%)	508 (58.0%)
Other Residence	229 (23.4%)	232 (26.5%)
Other Inside	41 (4.2%)	40 (4.6%)
Outside	97 (9.9%)	91 (10.4%)
Unknown	9 (0.9%)	5 (0.6%)
<b>Total</b>	<b>978</b>	<b>876</b>

Preliminary circumstances suggest that the majority of fatal illicit drug overdoses in 2017 occurred in inside locations (89.0%) while 10.4% occurred outside.

Private Residence – includes driveways garages, trailer homes and either decedent’s own or another’s residence.

Other Residence - includes hotels, motels, rooming houses, shelters, etc.

Other Inside – includes facilities, occupational sites, public buildings, and businesses.

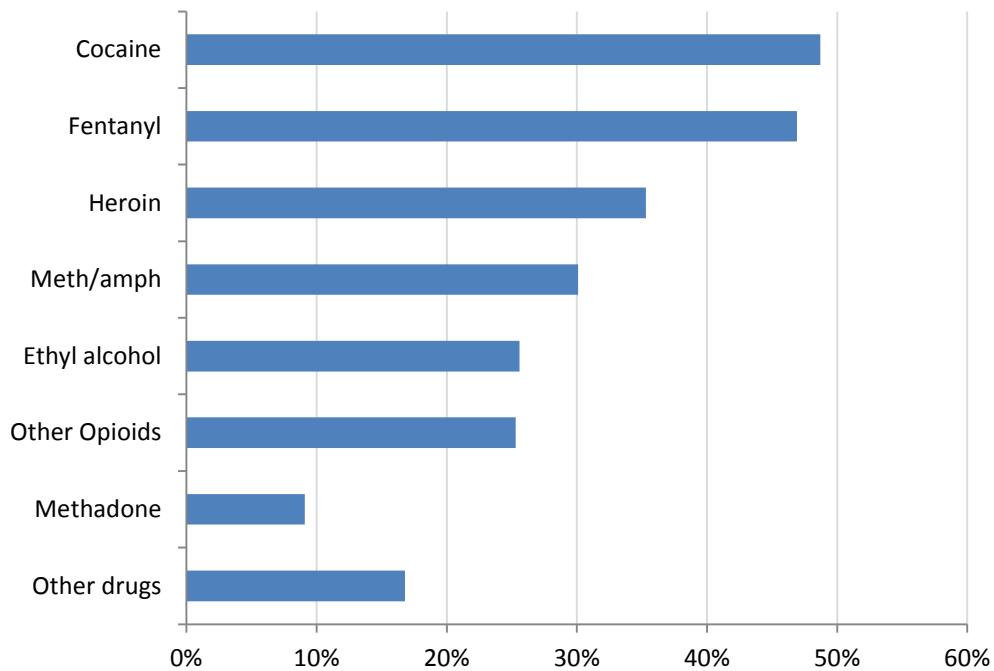
Outside – includes vehicles, streets, sidewalks, parking lots, public parks, wooded areas, and campgrounds

**BC Data by Relevant Drugs Detected:**

<b>Top Relevant Drugs Detected Among Illicit Drug Overdose Deaths, 2015-2016</b>	
<b>Drug Detected</b>	<b>BC (n=861)</b>
Cocaine	48.7%
Fentanyl	46.9%
Heroin	35.3%
Meth/amph	30.1%
Ethyl alcohol	25.6%
Other opioids	25.3%
Methadone	9.1%
Other drugs	16.8%

*Note: Relevant drugs are drugs noted by the coroner as being relevant to the death (this data is only available for concluded investigations). As deaths could involve multiple drugs, percentages can add up to more than 100%. Meth/amph includes methamphetamine and amphetamine. Other opioids include codeine, oxycodone, morphine, hydromorphone etc but excludes heroin, fentanyl, fentanyl analogues, and methadone. Other drug includes benzodiazepines & Z-drugs, antidepressants, antiepileptics, antipsychotics, MDMA/MDA, cannabinoids, over-the-counter drugs, and other drugs not listed.*

**Top Relevant Drugs Detected Among Illicit Drug Overdose Deaths, 2015-2016**

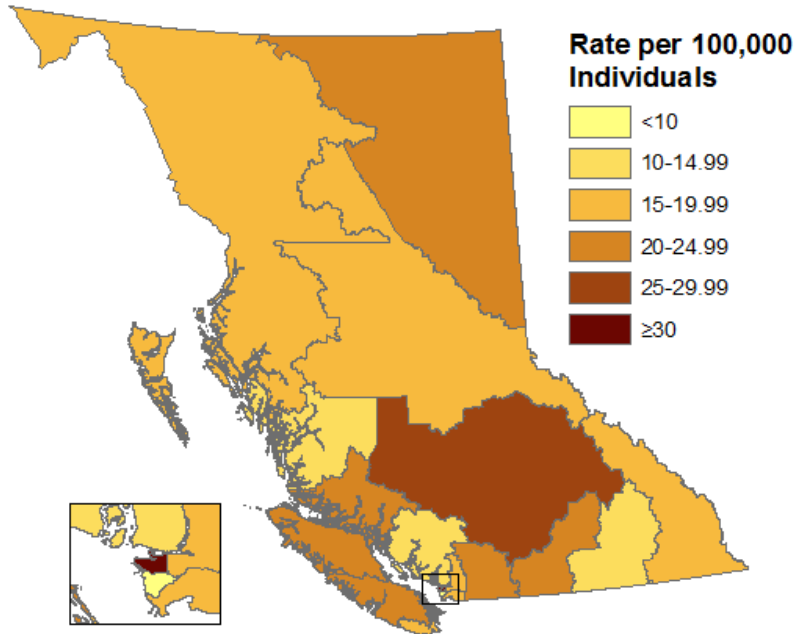


**Notes:**

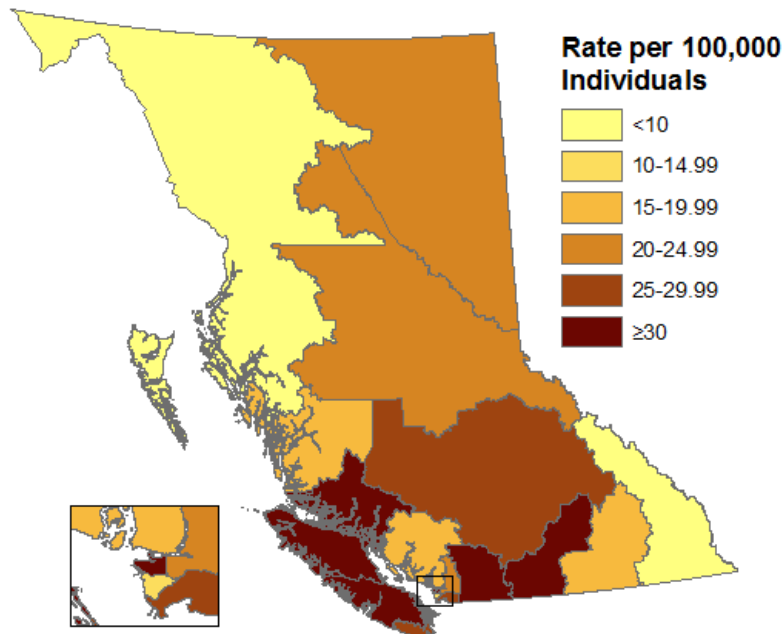
1. The BCCS operates in a live database environment. Some data for more recent years is based on preliminary circumstances and is subject to change as investigations are concluded. Data are not directly comparable to published counts from previous years.
2. 2017 data includes January 1, 2017 to July 31, 2017.
3. Date of death was used in tables where date of injury was unknown.
4. Death township was used in 12 cases of unknown or out of province injury township.
5. Population estimates were taken from:  
<http://www.bcstats.gov.bc.ca/StatisticsBySubject/Demography/PopulationEstimates.aspx>
6. Health Region breakdowns can be found at:  
<http://www2.gov.bc.ca/gov/content/data/geographic-data-services/land-use/administrative-boundaries/health-boundaries>
7. 2017 population estimates were taken from: <http://www2.gov.bc.ca/gov/content/data/statistics/people-population-community/population/population-projections>. 2017 rates were calculated by multiplying the population estimate by the fraction of months that have passed in the year for this reporting period.
8. For protection of privacy reasons and variability in small numbers, only townships with  $\geq 5$  cases per month have been included for the individual township monthly count (p. 9).

# Illicit Drug Overdose Death Rate Maps by Health Services Delivery Area

2016 Illicit Drug Overdose Death Rates by Health Services Delivery Area



2017 Illicit Drug Overdose Death Rates by Health Services Delivery Area



References for health regions can be found at: <http://www2.gov.bc.ca/gov/content/data/geographic-data-services/land-use/administrative-boundaries/health-boundaries>

## List of Townships and Corresponding Health Regions

Township Name	Health Authority	Health Services Delivery Area
100 Mile House	Interior	Thompson Cariboo Shuswap
108 Mile Ranch	Interior	Thompson Cariboo Shuswap
150 Mile House	Interior	Thompson Cariboo Shuswap
Abbotsford	Fraser	Fraser East
Alert Bay	Vancouver Island	North Vancouver Island
Armstrong	Interior	Okanagan
Arras	Northern	Northeast
Beasley	Interior	Kootenay Boundary
Beaver Falls	Interior	Kootenay Boundary
Blue River	Interior	Thompson Cariboo Shuswap
Bowen Island	Vancouver Coastal	North Shore/Coast Garibaldi
Bowser	Vancouver Island	Central Vancouver Island
Burnaby	Fraser	Fraser North
Burns Lake	Northern	Northern Interior
Cache Creek	Interior	Thompson Cariboo Shuswap
Campbell River	Vancouver Island	North Vancouver Island
Canal Flats	Interior	East Kootenay
Castlegar	Interior	Kootenay Boundary
Cawston	Interior	Okanagan
Cedar	Vancouver Island	Central Vancouver Island
Central Saanich	Vancouver Island	South Vancouver Island
Charlie Lake	Northern	Northeast
Chase	Interior	Thompson Cariboo Shuswap
Chemainus	Vancouver Island	Central Vancouver Island
Chetwynd	Northern	Northeast
Chilliwack	Fraser	Fraser East
Christina Lake	Interior	Kootenay Boundary
Clearwater	Interior	Thompson Cariboo Shuswap
Cobble Hill	Vancouver Island	Central Vancouver Island
Coldstream	Interior	Okanagan
Colwood	Vancouver Island	South Vancouver Island
Comox	Vancouver Island	North Vancouver Island
Coombs	Vancouver Island	Central Vancouver Island
Coquitlam	Fraser	Fraser North
Cortes Island	Vancouver Island	North Vancouver Island
Courtenay	Vancouver Island	North Vancouver Island
Cowichan Bay	Vancouver Island	Central Vancouver Island
Cranbrook	Interior	East Kootenay
Crescent Valley	Interior	Kootenay Boundary
Creston	Interior	East Kootenay
Cultus Lake	Fraser	Fraser East
Cumberland	Vancouver Island	North Vancouver Island



## List of Townships and Corresponding Health Regions

Township Name	Health Authority	Health Services Delivery Area
Dawson Creek	Northern	Northeast
Dease Lake	Northern	Northwest
Delta	Fraser	Fraser South
Duncan	Vancouver Island	Central Vancouver Island
Edgewood	Interior	Kootenay Boundary
Elkford	Interior	East Kootenay
Enderby	Interior	Okanagan
Errington	Vancouver Island	Central Vancouver Island
Esquimalt	Vancouver Island	South Vancouver Island
Fairmont Hot Springs	Interior	East Kootenay
Falkland	Interior	Thompson Cariboo Shuswap
Fort Nelson	Northern	Northeast
Fort St. James	Northern	Northern Interior
Fort St. John	Northern	Northeast
Gabriola Island	Vancouver Island	Central Vancouver Island
Galiano Island	Vancouver Island	South Vancouver Island
Gibsons	Vancouver Coastal	North Shore/Coast Garibaldi
Gillies Bay	Vancouver Coastal	North Shore/Coast Garibaldi
Gold River	Vancouver Island	North Vancouver Island
Golden	Interior	East Kootenay
Grand Forks	Interior	Kootenay Boundary
Harrison Hot Springs	Fraser	Fraser East
Hope	Fraser	Fraser East
Horsefly	Interior	Thompson Cariboo Shuswap
Houston	Northern	Northwest
Invermere	Interior	East Kootenay
Isle Pierre	Northern	Northern Interior
Kamloops	Interior	Thompson Cariboo Shuswap
Kaslo	Interior	Kootenay Boundary
Kelowna	Interior	Okanagan
Kent	Fraser	Fraser East
Kimberley	Interior	East Kootenay
Kispiox	Northern	Northwest
Kitamaat Village	Northern	Northwest
Kitimat	Northern	Northwest
Kitseguecla (Gitsegukla)	Northern	Northwest
Lac La Hache	Interior	Thompson Cariboo Shuswap
Ladysmith	Vancouver Island	Central Vancouver Island
Lake Country, District Of	Interior	Okanagan
Lake Cowichan	Vancouver Island	Central Vancouver Island
Langford	Vancouver Island	South Vancouver Island
Langley	Fraser	Fraser South

## List of Townships and Corresponding Health Regions

Township Name	Health Authority	Health Services Delivery Area
Lantzville	Vancouver Island	Central Vancouver Island
Lee Creek	Interior	Thompson Cariboo Shuswap
Lillooet	Interior	Thompson Cariboo Shuswap
Lions Bay	Vancouver Coastal	North Shore/Coast Garibaldi
Logan Lake	Interior	Thompson Cariboo Shuswap
Lumby	Interior	Okanagan
Mabel Lake	Interior	Okanagan
Mackenzie	Northern	Northern Interior
Madeira Park	Vancouver Coastal	North Shore/Coast Garibaldi
Malakwa	Interior	Thompson Cariboo Shuswap
Maple Ridge	Fraser	Fraser North
Mayne Island	Vancouver Island	South Vancouver Island
Merritt	Interior	Thompson Cariboo Shuswap
Mill Bay	Vancouver Island	Central Vancouver Island
Mission	Fraser	Fraser East
Nakusp	Interior	Kootenay Boundary
Nanaimo	Vancouver Island	Central Vancouver Island
Nanoose Bay	Vancouver Island	Central Vancouver Island
Nelson	Interior	Kootenay Boundary
New Denver	Interior	Kootenay Boundary
New Hazelton	Northern	Northwest
New Westminster	Fraser	Fraser North
North Cowichan	Vancouver Island	Central Vancouver Island
North Vancouver	Vancouver Coastal	North Shore/Coast Garibaldi
Oak Bay	Vancouver Island	South Vancouver Island
Okanagan Falls	Interior	Okanagan
Olalla	Interior	Okanagan
Oliver	Interior	Okanagan
Osoyoos	Interior	Okanagan
Parksville	Vancouver Island	Central Vancouver Island
Peachland	Interior	Okanagan
Pemberton	Vancouver Coastal	North Shore/Coast Garibaldi
Pender Island	Vancouver Island	South Vancouver Island
Penticton	Interior	Okanagan
Pink Mountain	Northern	Northeast
Pitt Meadows	Fraser	Fraser North
Port Alberni	Vancouver Island	Central Vancouver Island
Port Alice	Vancouver Island	North Vancouver Island
Port Coquitlam	Fraser	Fraser North
Port Hardy	Vancouver Island	North Vancouver Island
Port Mcneill	Vancouver Island	North Vancouver Island
Port Moody	Fraser	Fraser North

**List of Townships and Corresponding Health Regions**

Township Name	Health Authority	Health Services Delivery Area
Powell River	Vancouver Coastal	North Shore/Coast Garibaldi
Prince George	Northern	Northern Interior
Prince Rupert	Northern	Northwest
Princeton	Interior	Okanagan
Prophet River	Northern	Northeast
Quadra Island	Vancouver Island	North Vancouver Island
Qualicum Beach	Vancouver Island	Central Vancouver Island
Queen Charlotte City	Northern	Northwest
Quesnel	Northern	Northern Interior
Radium Hot Springs	Interior	East Kootenay
Revelstoke	Interior	Thompson Cariboo Shuswap
Richmond	Vancouver Coastal	Richmond
Roberts Creek	Vancouver Coastal	North Shore/Coast Garibaldi
Rock Creek	Interior	Kootenay Boundary
Saanich	Vancouver Island	South Vancouver Island
Salmo	Interior	Kootenay Boundary
Salmon Arm	Interior	Thompson Cariboo Shuswap
Salt Spring Island	Vancouver Island	South Vancouver Island
Sayward	Vancouver Island	North Vancouver Island
Sechelt	Vancouver Coastal	North Shore/Coast Garibaldi
Seton Portage	Interior	Thompson Cariboo Shuswap
Shawnigan Lake	Vancouver Island	Central Vancouver Island
Sicamous	Interior	Thompson Cariboo Shuswap
Smithers	Northern	Northwest
Sointula	Vancouver Island	North Vancouver Island
Sooke	Vancouver Island	South Vancouver Island
South Slokan	Interior	Kootenay Boundary
South Wellington	Vancouver Island	Central Vancouver Island
Sparwood	Interior	East Kootenay
Squamish	Vancouver Coastal	North Shore/Coast Garibaldi
Sullivan Bay	Vancouver Island	North Vancouver Island
Summerland	Interior	Okanagan
Surrey	Fraser	Fraser South
Terrace	Northern	Northwest
Trail	Interior	Kootenay Boundary
Tumbler Ridge	Northern	Northeast
Ucluelet	Vancouver Island	Central Vancouver Island
Vancouver	Vancouver Coastal	Vancouver
Vanderhoof	Northern	Northern Interior
Vernon	Interior	Okanagan
Victoria	Vancouver Island	South Vancouver Island
West Kelowna	Interior	Okanagan

**List of Townships and Corresponding Health Regions**

Township Name	Health Authority	Health Services Delivery Area
West Vancouver	Vancouver Coastal	North Shore/Coast Garibaldi
Whisky Creek	Vancouver Island	Central Vancouver Island
Whistler	Vancouver Coastal	North Shore/Coast Garibaldi
White Rock	Fraser	Fraser South
Williams Lake	Interior	Thompson Cariboo Shuswap
Winlaw	Interior	Kootenay Boundary
Wonowon	Northern	Northeast
Yale	Fraser	Fraser East
Ymir	Interior	Kootenay Boundary
Youbou	Vancouver Island	Central Vancouver Island
Zeballos	Vancouver Island	North Vancouver Island