

This report summarizes all unintentional illicit drug overdose deaths in British Columbia (accidental and undetermined) that occurred between January 1, 2007 and June 30, 2017, inclusive. It includes confirmed and suspected illicit overdose deaths. *Please note that data is subject to change as investigations are concluded.*

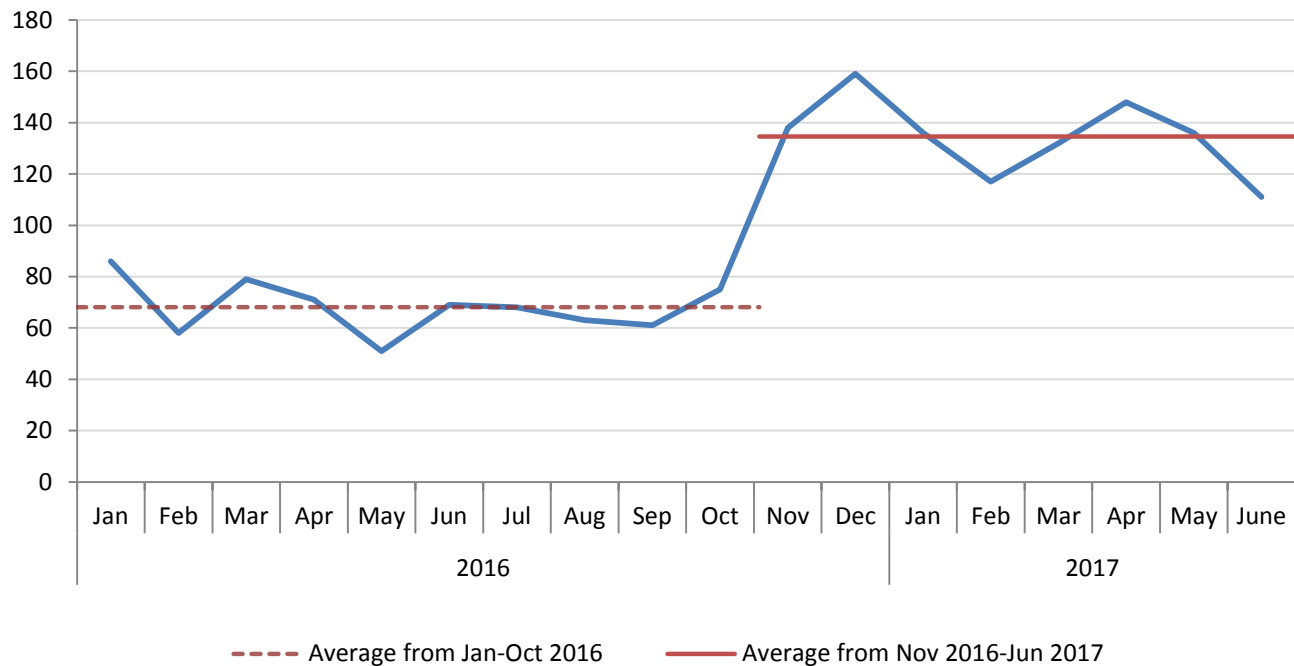
Inclusion Criteria: The illicit drug overdose category includes the following:

- Street drugs (Controlled and illegal drugs: heroin, cocaine, MDMA, methamphetamine, illicit fentanyl etc.)
- Medications not prescribed to the decedent but obtained/purchased on the street, from unknown means or where origin of drug not known
- Combinations of the above with prescribed medications

Summary

- There were 111 suspected drug overdose deaths in June 2017. This is a 61% increase over the number of death occurring in June 2016 (69).
- The number of illicit drug overdose deaths in June 2017 (111) equates to about 3.7 deaths per day for the month.

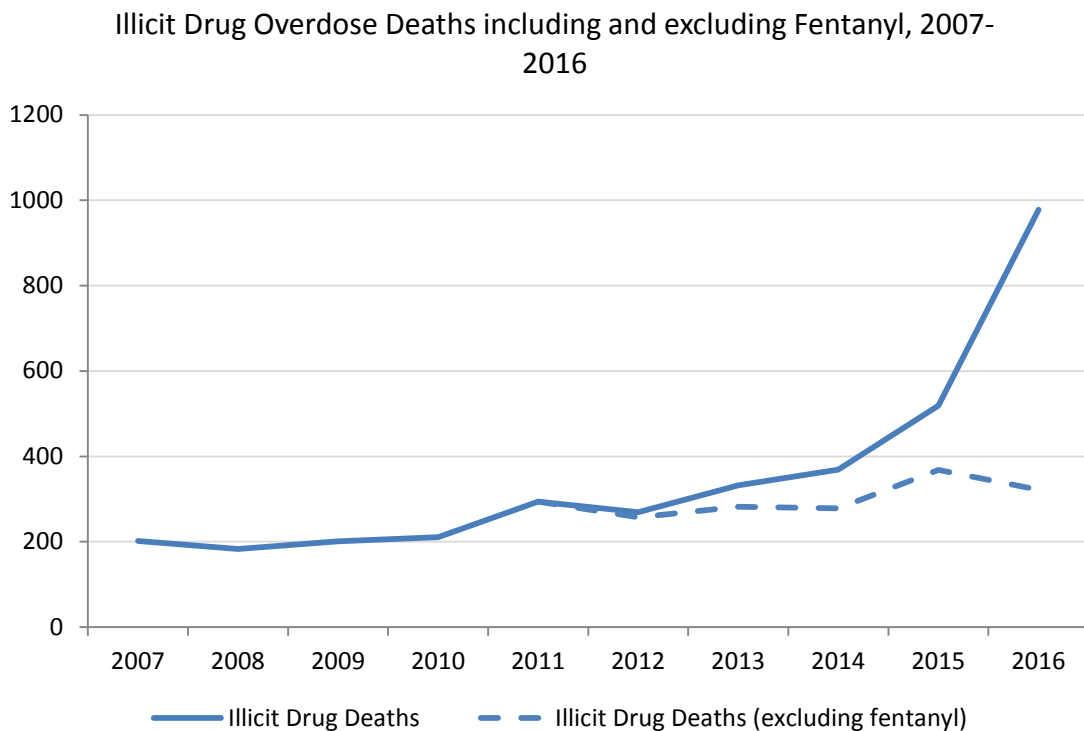
Illicit Drug Overdose Deaths by Month, 2016-2017^[2]



- In 2017, Individuals aged 30-59 have accounted for the largest percentage of illicit drug overdose deaths (73.2%). Males accounted for 81.8% of these suspected illicit drug overdose deaths.
- The top three townships where fatal illicit drug overdoses occurred were Vancouver, Surrey, and Victoria.
- Fraser and Vancouver Coastal Health Authority had the highest number of illicit drug overdose deaths (258 and 249 deaths, respectively), making up 65% of all illicit drug overdose deaths during this period.
- Vancouver Coastal Health Authority had the highest rate of illicit drug overdose deaths (42.2 deaths per 100,000 individuals) and the largest increase in rate from 2016 (79% increase) among all the health authorities. Overall, the rate of illicit drug overdose deaths in BC increased 58% to 32.5 deaths per 100,000 individuals from the 2016 rate.
- Okanagan, Fraser East, Fraser North, Richmond, Vancouver, North Shore/Coast Garibaldi, Central Vancouver Island, North Vancouver Island, and Northern Interior health services delivery areas saw greater than 50% increase in illicit drug overdose death rates compared to 2016.
- All health authorities except Vancouver Island saw a decline in the number of illicit drug overdose deaths in June 2017 compared to May 2017. The number of illicit drug overdose deaths in Vancouver Island Health Authority more than doubled from 11 in May 2017 to 23 in June 2017.
- 89.4% of illicit drug overdose deaths occurred inside (57.4% private residences, 31.9% other inside locations) and 9.9% occurred outside in vehicles, sidewalks, streets, parks, etc.
- There were no deaths at supervised consumption or drug overdose prevention sites.

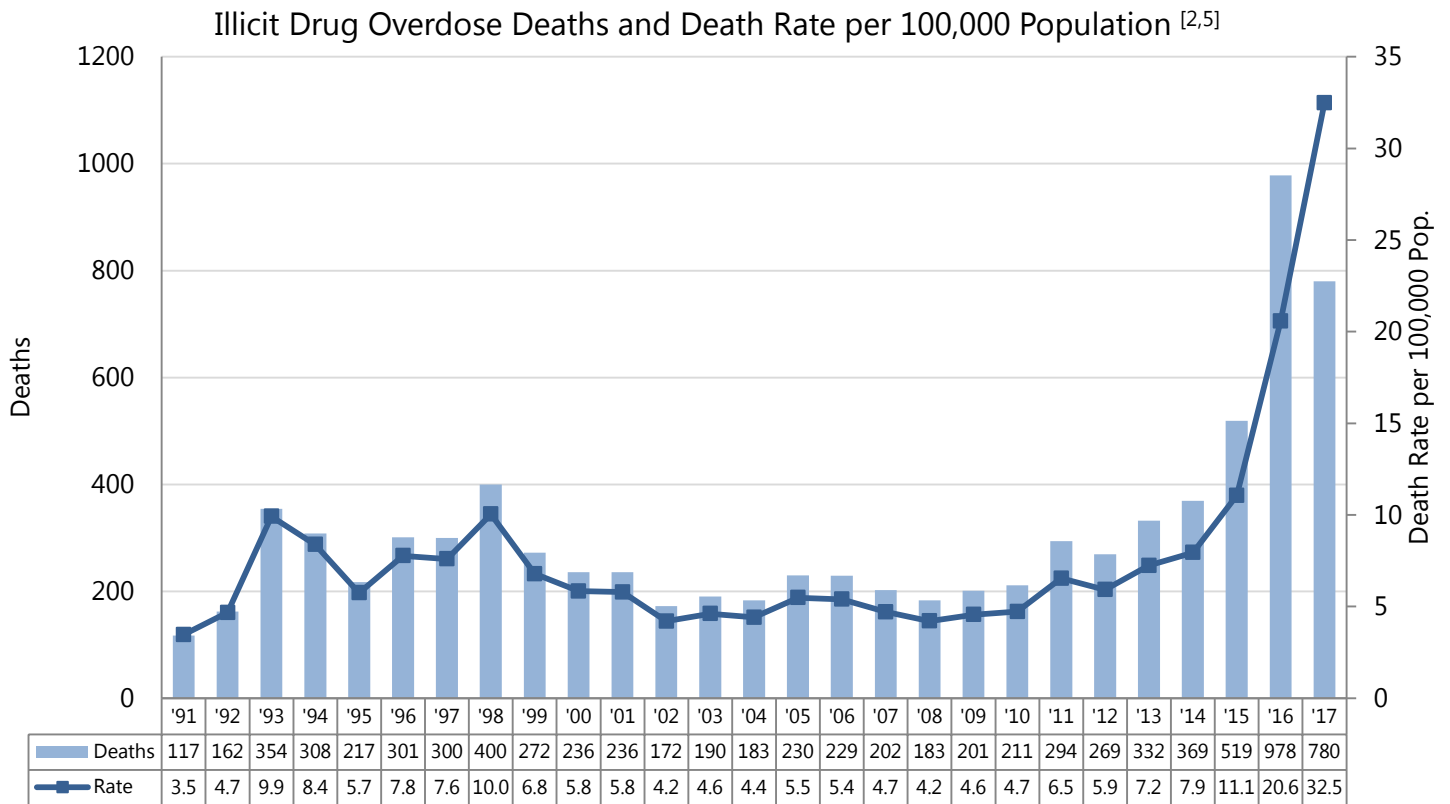
Type of Drugs:

- Preliminary data suggests that the proportion of illicit drug overdose deaths for which illicit fentanyl was detected (alone or in combination with other drugs) was 67% in 2016 and 78% in Jan-May 2017. *Fentanyl data for June was not available for this report.*
- Illicit fentanyl-detected deaths appear to account for the increase in illicit drug overdose deaths since 2012 as the number of illicit drug overdose deaths excluding fentanyl -detected has remained relatively stable since 2011 (average of 300 deaths per year). *This data is subject to change as further analogue testing becomes available.*



- A review of completed cases from 2015 and 2016 indicates that the top four detected drugs relevant to illicit drug overdose deaths were cocaine (48.6%), fentanyl (45.9%), heroin (35.9%) and methamphetamine/amphetamine (30.0%).

BC Data and Rates



Illicit Drug Overdose Deaths by Month, British Columbia, 2007-2017^[2]

Month	2007	2008	2009	2010	2011	2012	2013	2014	2015	2016	2017
Jan	15	18	23	16	24	20	20	23	42	86	136
Feb	14	8	15	14	24	17	21	39	31	58	117
Mar	19	17	10	15	25	25	33	28	31	79	132
Apr	24	18	8	9	26	31	31	29	34	71	148
May	10	18	19	22	22	19	28	40	42	51	136
Jun	18	18	16	21	22	25	25	29	34	69	111
Subtotal	100	97	91	97	143	137	158	188	214	414	780
Jul	11	24	19	23	33	29	38	25	37	68	-
Aug	21	16	27	24	22	19	21	37	52	63	-
Sep	14	12	16	20	22	16	28	31	47	61	-
Oct	15	10	13	18	23	19	19	35	53	75	-
Nov	19	9	18	18	27	28	31	28	48	138	-
Dec	22	15	17	11	24	21	37	25	68	159	-
Total	202	183	201	211	294	269	332	369	519	978	780
Average	16.8	15.3	16.8	17.6	24.5	22.4	27.7	30.8	43.3	81.5	130.0

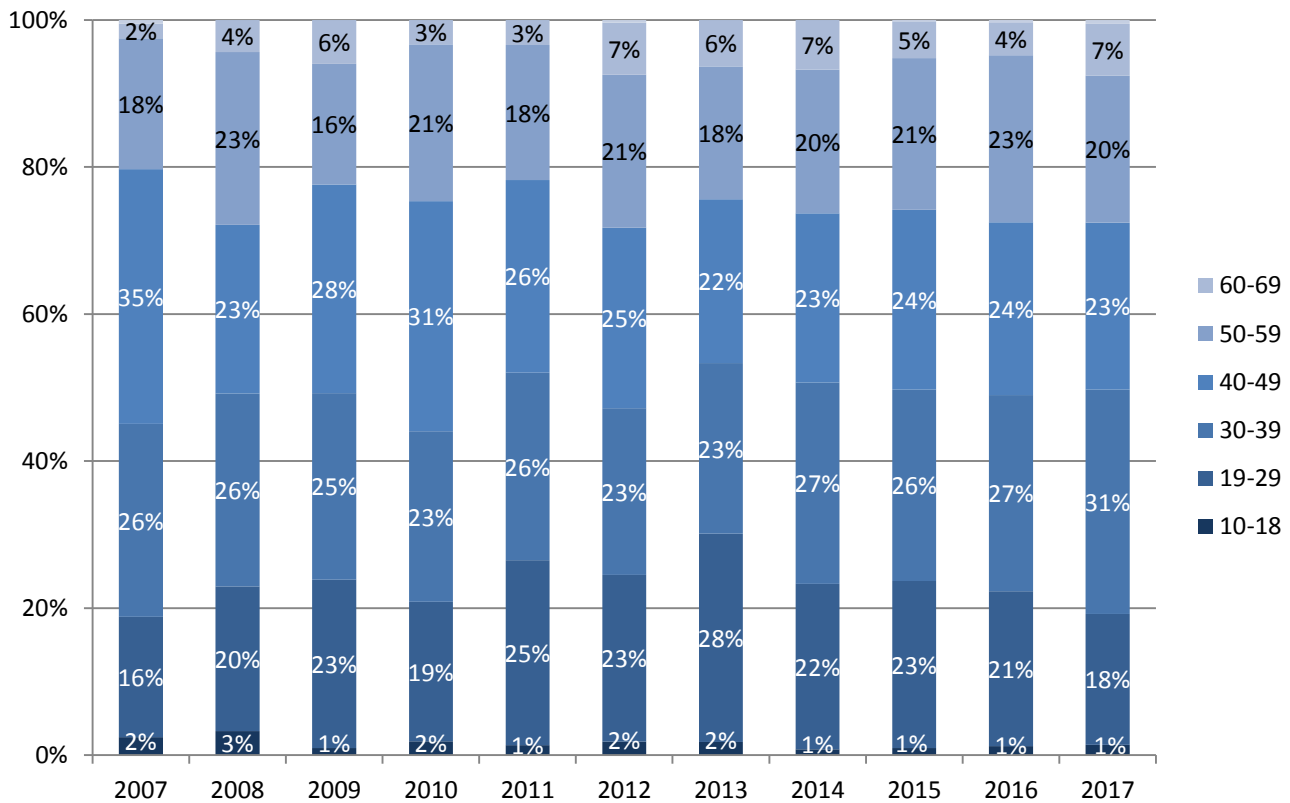
BC Data by Gender/Age:

Illicit Drug Overdose Deaths by Gender, 2007-2017^[2]											
Gender	2007	2008	2009	2010	2011	2012	2013	2014	2015	2016	2017
Female	47	49	55	49	82	75	79	86	101	192	142
Male	155	134	146	162	212	194	253	283	418	786	638
Total	202	183	201	211	294	269	332	369	519	978	780

Illicit Drug Overdose Deaths by Age Group, 2007-2017^[2]											
Age Group	2007	2008	2009	2010	2011	2012	2013	2014	2015	2016	2017
10-18	5	6	2	4	4	5	6	3	5	12	11
19-29	33	36	46	40	74	61	94	83	118	206	139
30-39	53	48	51	49	75	61	77	101	135	261	238
40-49	70	42	57	66	77	66	74	85	127	230	177
50-59	36	43	33	45	54	56	60	72	107	222	156
60-69	4	8	12	7	10	19	21	25	26	44	55
70-79	1	0	0	0	0	1	0	0	1	3	4
Total	202	183	201	211	294	269	332	369	519	978	780

Note: The age range of decedents of illicit drug overdose between 2007-2017 ranged from 14 to 76 years of age.

Illicit Drug Overdose Deaths by Age Group, 2007-2017



Age-Specific Illicit Drug Overdose Death Rates per 100,000, 2007-2017^[5,7]

Age Group	2007	2008	2009	2010	2011	2012	2013	2014	2015	2016	2017
10-18	1.0	1.3	0.4	0.9	0.9	1.1	1.3	0.7	1.1	2.7	5.0
19-29	5.2	5.5	6.9	5.9	10.9	8.9	13.7	11.9	16.8	29.2	39.6
30-39	9.1	8.2	8.6	8.3	12.6	10.1	12.6	16.2	21.4	40.7	73.1
40-49	10.1	6.1	8.3	9.7	11.4	9.9	11.3	13.2	20.0	36.4	55.8
50-59	5.8	6.8	5.1	6.8	8.0	8.2	8.6	10.3	15.2	31.6	44.6
60-69	1.0	1.8	2.6	1.5	2.0	3.7	3.9	4.5	4.5	7.4	18.0
70-79	0.4	0.0	0.0	0.0	0.0	0.3	0.0	0.0	0.3	0.9	2.1
Total	4.7	4.2	4.6	4.7	6.5	5.9	7.2	7.9	11.1	20.6	32.5

BC Data by Township of Injury:

Illicit Drug Overdose Deaths by Top Townships of Injury, 2007-2017* [2,4]											
Township	2007	2008	2009	2010	2011	2012	2013	2014	2015	2016	2017
Vancouver	59	38	60	42	69	65	80	101	136	231	209
Surrey	22	20	23	33	42	44	36	43	76	119	87
Victoria	19	29	13	13	17	17	25	20	21	67	50
Kelowna	6	2	5	9	14	8	12	12	19	48	46
Abbotsford	3	4	4	10	16	7	10	7	26	39	32
Burnaby	9	12	8	9	10	10	13	12	16	39	26
Nanaimo	2	2	6	4	8	6	20	16	19	28	24
Kamloops	11	7	7	10	2	5	8	7	7	42	22
Maple Ridge	5	2	6	4	4	5	10	14	29	27	20
Langley	3	6	2	3	10	5	10	10	10	30	18
Chilliwack	3	4	2	2	8	8	6	6	10	12	15
Richmond	0	1	3	4	4	1	3	3	6	14	15
Vernon	3	1	4	6	7	1	11	6	8	12	13
New Westminster	1	4	2	6	6	3	5	9	12	10	12
Other Township	56	51	56	56	77	84	83	103	124	260	191
Total	202	183	201	211	294	269	332	369	519	978	780

*sorted by 2017 totals

BC Data by Day of Week:

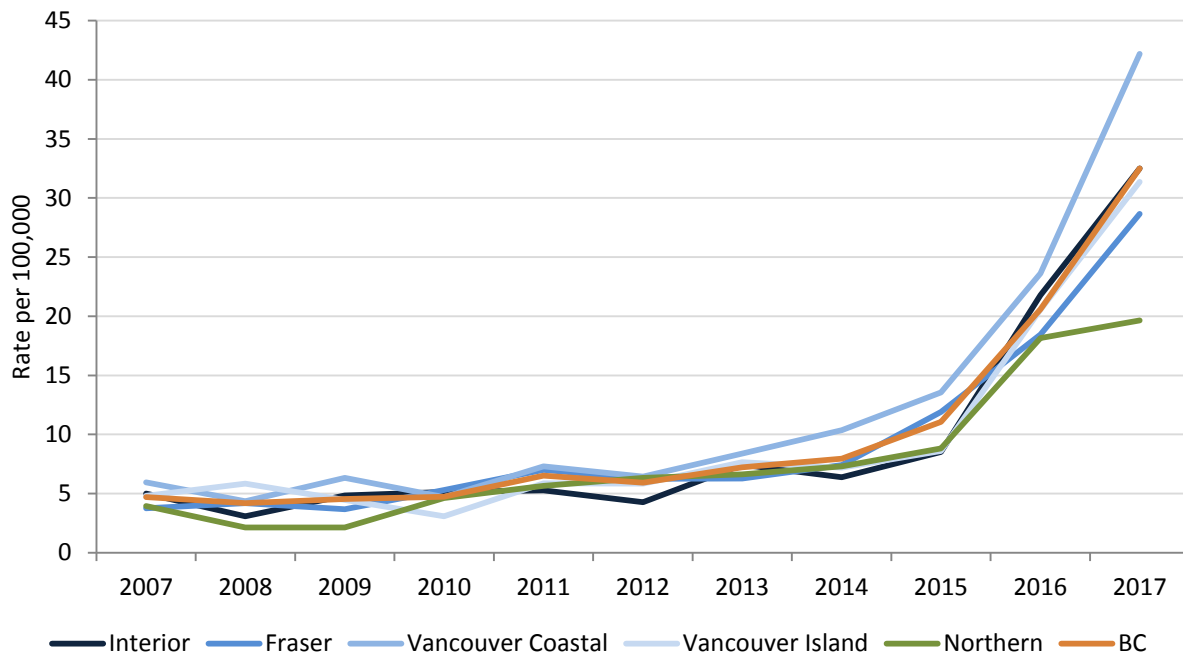
Illicit Drug Overdose Deaths by Day of Week of Injury, British Columbia, 2007-2017 ^[2,3]											
Day	2007	2008	2009	2010	2011	2012	2013	2014	2015	2016	2017
Monday	25	21	15	29	39	32	33	38	68	101	85
Tuesday	23	24	24	26	27	35	42	37	63	116	90
Wednesday	24	25	31	30	35	37	35	49	68	128	109
Thursday	24	25	27	33	51	34	41	59	72	148	118
Friday	38	31	28	33	42	32	57	61	79	140	147
Saturday	34	34	34	35	53	46	72	72	88	181	114
Sunday	34	23	42	25	47	53	52	53	81	164	117
Total	202	183	201	211	294	269	332	369	519	978	780

Health Authority Data:**Illicit Drug Overdose Deaths by Health Authority, 2007-2017^[2,4,6]**

HA	2007	2008	2009	2010	2011	2012	2013	2014	2015	2016	2017
Interior	35	22	35	37	38	31	54	47	63	162	122
Fraser	57	65	58	86	115	104	106	127	208	329	258
Vancouver Coastal	64	47	69	52	81	72	95	119	157	276	249
Vancouver Island	35	43	33	23	44	44	58	55	66	160	123
Northern	11	6	6	13	16	18	19	21	25	51	28
BC	202	183	201	211	294	269	332	369	519	978	780

Illicit Drug Overdose Death Rates by Health Authority per 100,000, 2007-2017^[4-7]

HA	2007	2008	2009	2010	2011	2012	2013	2014	2015	2016	2017
Interior	5.0	3.1	4.9	5.2	5.3	4.3	7.5	6.4	8.5	21.8	32.5
Fraser	3.8	4.2	3.7	5.3	7.0	6.2	6.3	7.4	11.9	18.5	28.7
Vancouver Coastal	6.0	4.4	6.3	4.7	7.3	6.4	8.4	10.4	13.6	23.6	42.2
Vancouver Island	4.8	5.9	4.5	3.1	5.9	5.8	7.7	7.2	8.6	20.6	31.4
Northern	3.9	2.1	2.1	4.6	5.7	6.3	6.6	7.3	8.8	18.2	19.6
BC	4.7	4.2	4.6	4.7	6.5	5.9	7.2	7.9	11.1	20.6	32.5

Illicit Drug Overdose Death Rates by Health Authority, 2007-2017

Illicit Drug Overdose Deaths by Month of Death and Health Authority and Township, 2016-2017 ^[4,6,8]								
Year	Month	Health Authorities					Township	
		Interior	Fraser	Vancouver Coastal	Vancouver Island	Northern	Vancouver	Surrey
2016	Jan	17	28	22	15	4	19	10
	Feb	10	20	16	10	2	14	8
	Mar	12	30	14	15	8	13	8
	Apr	9	24	15	15	8	10	8
	May	11	21	7	8	4	5	9
	Jun	10	29	19	7	4	16	10
	Jul	9	23	17	16	3	13	11
	Aug	6	23	22	10	2	20	8
	Sep	13	19	15	12	2	13	8
	Oct	15	17	24	16	3	17	5
	Nov	20	47	52	18	1	44	16
	Dec	30	48	53	18	10	47	18
2017	Jan	19	42	54	20	1	49	12
	Feb	19	35	34	24	5	31	15
	Mar	22	43	37	24	6	28	14
	Apr	18	48	55	21	6	44	12
	May	26	55	37	11	7	31	21
	June	18	35	32	23	3	26	13
Total		284	587	525	283	79	440	206
Average		15.8	32.6	29.2	15.7	4.4	24.4	11.4

Illicit Drug Overdose Deaths by Health Services Delivery Area, 2007-2017^[2,4,6]											
HSDA	2007	2008	2009	2010	2011	2012	2013	2014	2015	2016	2017
East Kootenay	2	2	1	0	1	2	4	4	2	13	3
Kootenay Boundary	4	0	2	3	4	4	2	3	6	9	6
Okanagan	13	9	15	18	28	16	33	27	42	77	83
Thompson Cariboo	16	11	17	16	5	9	15	13	13	63	30
Fraser East	9	14	9	22	31	20	20	16	41	67	63
Fraser North	19	22	23	26	25	30	35	52	74	101	79
Fraser South	29	29	26	38	59	54	51	59	93	161	116
Richmond	0	1	3	4	4	1	3	3	6	14	15
Vancouver	59	38	60	42	69	65	80	101	136	231	209
North Shore/Coast Garibaldi	5	8	6	6	8	6	12	15	15	31	25
South Vancouver Island	21	31	15	13	17	20	26	23	25	76	56
Central Vancouver Island	8	6	13	6	17	20	24	25	30	57	46
North Vancouver Island	6	6	5	4	10	4	8	7	11	27	21
Northwest	2	2	0	3	1	0	6	2	6	12	4
Northern Interior	7	3	5	7	8	12	8	11	15	22	17
Northeast	2	1	1	3	7	6	5	8	4	17	7
Total	202	183	201	211	294	269	332	369	519	978	780

Illicit Drug Overdose Death Rates by Health Services Delivery Area per 100,000, 2007-2017 ^[4-7]											
HSDA	2007	2008	2009	2010	2011	2012	2013	2014	2015	2016	2017
East Kootenay	2.7	2.6	1.3	0.0	1.3	2.6	5.2	5.1	2.6	16.6	7.7
Kootenay Boundary	5.2	0.0	2.6	3.9	5.1	5.1	2.6	3.8	7.6	11.4	15.4
Okanagan	3.9	2.6	4.3	5.2	8.1	4.6	9.4	7.6	11.7	21.2	44.7
Thompson Cariboo	7.5	5.1	7.8	7.4	2.3	4.1	6.8	5.9	5.8	28.1	26.8
Fraser East	3.3	5.1	3.2	7.8	10.9	7.0	7.0	5.5	13.8	22.3	41.4
Fraser North	3.3	3.8	3.8	4.2	4.0	4.8	5.5	8.1	11.3	15.2	23.4
Fraser South	4.3	4.2	3.7	5.3	8.0	7.2	6.7	7.6	11.7	19.7	28.3
Richmond	0.0	0.5	1.6	2.0	2.0	0.5	1.5	1.5	2.9	6.6	14.0
Vancouver	9.5	6.1	9.6	6.6	10.9	10.1	12.3	15.3	20.4	34.4	61.5
North Shore/Coast Garibaldi	1.9	3.0	2.2	2.2	2.9	2.2	4.3	5.3	5.3	11.0	17.4
South Vancouver Island	5.9	8.6	4.1	3.5	4.6	5.4	7.0	6.2	6.6	19.9	29.0
Central Vancouver Island	3.2	2.3	5.0	2.3	6.5	7.6	9.1	9.4	11.2	20.9	33.6
North Vancouver Island	5.2	5.1	4.2	3.4	8.3	3.3	6.6	5.8	9.1	22.1	33.9
Northwest	2.7	2.7	0.0	4.1	1.4	0.0	8.2	2.7	8.4	17.1	10.9
Northern Interior	5.0	2.1	3.6	5.0	5.6	8.4	5.6	7.7	10.7	15.9	24.3
Northeast	3.1	1.5	1.5	4.5	10.4	8.6	7.1	11.2	5.6	23.5	19.5
Total	4.7	4.2	4.6	4.7	6.5	5.9	7.2	7.9	11.1	20.6	32.5

BC Data by Place of Injury

Illicit Drug Overdose Deaths by Place of Injury, BC, 2016-2017 ^[2]		
	2016	2017
Inside:		
Private Residence	600 (61.3%)	448 (57.4%)
Other Residence	230 (23.5%)	211 (27.1%)
Other Inside	41 (4.2%)	38 (4.9%)
Outside	97 (9.9%)	77 (9.9%)
Unknown	10 (1.0%)	6 (0.8%)
Total	978	780

Preliminary circumstances suggest that the majority of fatal illicit drug overdoses in 2017 occurred in inside locations (89.4%) while 9.9% occurred outside.

Private Residence – includes driveways garages, trailer homes and either decedent’s own or another’s residence.

Other Residence - includes hotels, motels, rooming houses, shelters, etc.

Other Inside – includes facilities, occupational sites, public buildings, and businesses.

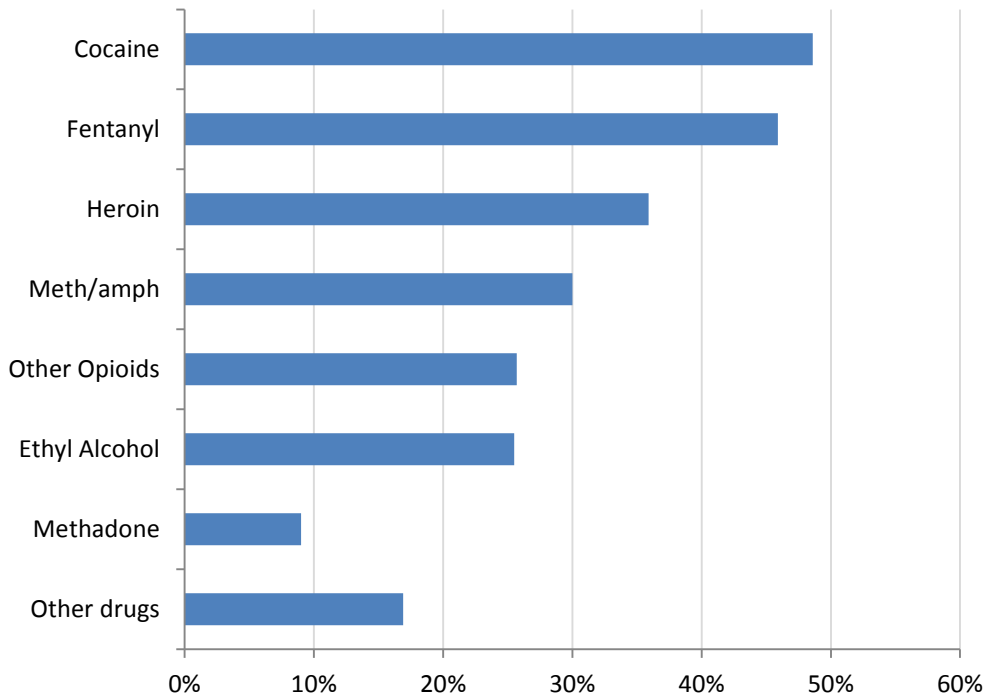
Outside – includes vehicles, streets, sidewalks, parking lots, public parks, wooded areas, and campgrounds

BC Data by Relevant Drugs Detected:

Top Relevant Drugs Detected Among Illicit Drug Overdose Deaths, 2015-2016	
Drug Detected	BC (n=834)
Cocaine	48.6%
Fentanyl	45.9%
Heroin	35.9%
Meth/amph	30.0%
Other opioids	25.7%
Ethyl alcohol	25.5%
Methadone	9.0%
Other drugs	16.9%

Note: Relevant drugs are drugs noted by the coroner as being relevant to the death (this data is only available for concluded investigations). As deaths could involve multiple drugs, percentages can add up to more than 100%. Meth/amph includes methamphetamine and amphetamine. Other opioids include codeine, oxycodone, morphine, hydromorphone etc but excludes heroin, fentanyl, fentanyl analogues, and methadone. Other drug includes benzodiazepines & Z-drugs, antidepressants, antiepileptics, antipsychotics, MDMA/MDA, cannabinoids, over-the-counter drugs, and other drugs not listed.

Top Relevant Drugs Detected Among Illicit Drug Overdose Deaths, 2015-2016

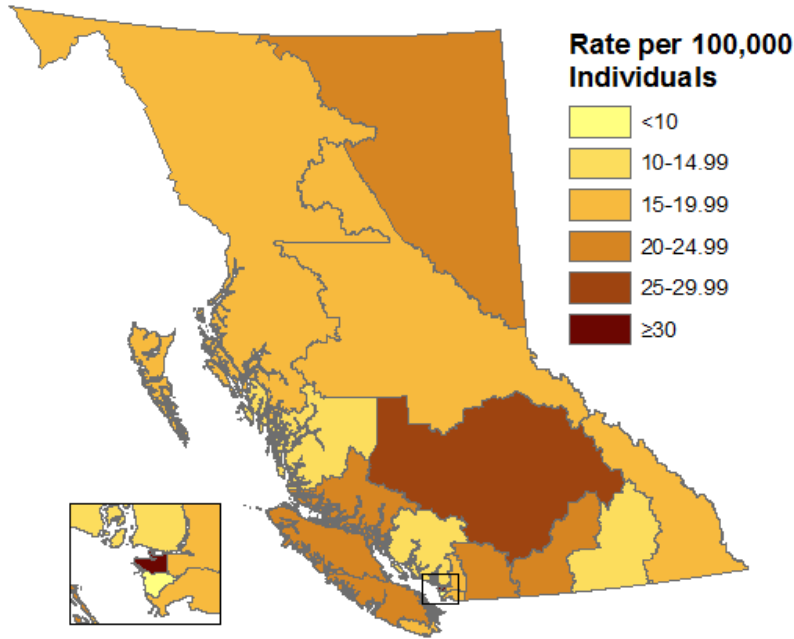


Notes:

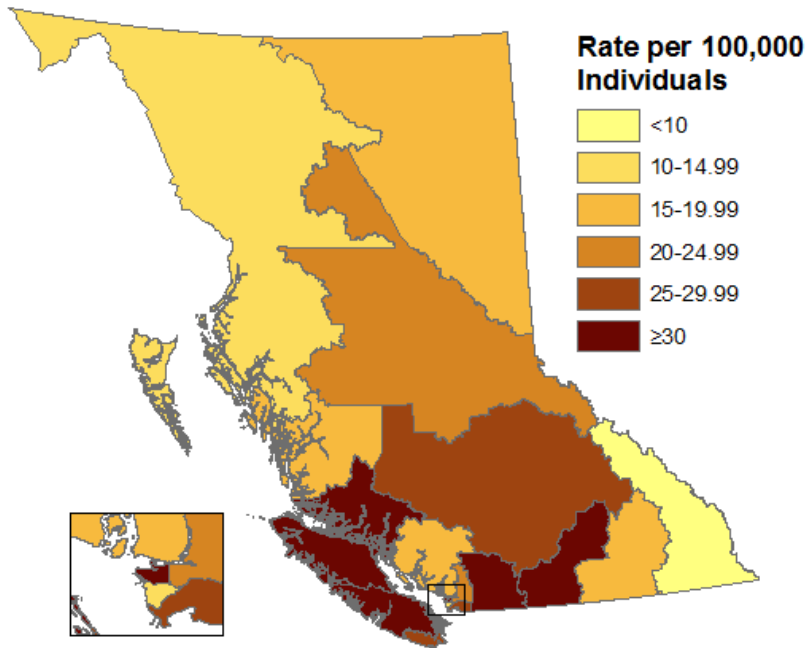
1. The BCCS operates in a live database environment. Some data for more recent years is based on preliminary circumstances and is subject to change as investigations are concluded. Data are not directly comparable to published counts from previous years.
2. 2017 data includes January 1, 2017 to June 30, 2017.
3. Date of death was used in tables where date of injury was unknown.
4. Death township was used in 12 cases of unknown or out of province injury township.
5. Population estimates were taken from:
<http://www.bcstats.gov.bc.ca/StatisticsBySubject/Demography/PopulationEstimates.aspx>
6. Health Region breakdowns can be found at:
<http://www2.gov.bc.ca/gov/content/data/geographic-data-services/land-use/administrative-boundaries/health-boundaries>
7. 2017 population estimates were taken from: <http://www2.gov.bc.ca/gov/content/data/statistics/people-population-community/population/population-projections>. 2017 rates were calculated by multiplying the population estimate by the fraction of months that have passed in the year for this reporting period.
8. Only townships with ≥ 5 cases per month have been included for the monthly report.

Illicit Drug Overdose Death Rate Maps by Health Services Delivery Area

2016 Illicit Drug Overdose Death Rates by Health Services Delivery Area



2017 Illicit Drug Overdose Death Rates by Health Services Delivery Area



References for health regions can be found at: <http://www2.gov.bc.ca/gov/content/data/geographic-data-services/land-use/administrative-boundaries/health-boundaries>

List of Townships and Corresponding Health Regions

Township Name	Health Authority	Health Services Delivery Area
100 Mile House	Interior	Thompson Cariboo Shuswap
108 Mile Ranch	Interior	Thompson Cariboo Shuswap
150 Mile House	Interior	Thompson Cariboo Shuswap
Abbotsford	Fraser	Fraser East
Alert Bay	Vancouver Island	North Vancouver Island
Armstrong	Interior	Okanagan
Arras	Northern	Northeast
Beasley	Interior	Kootenay Boundary
Beaver Falls	Interior	Kootenay Boundary
Blue River	Interior	Thompson Cariboo Shuswap
Bowen Island	Vancouver Coastal	North Shore/Coast Garibaldi
Bowser	Vancouver Island	Central Vancouver Island
Burnaby	Fraser	Fraser North
Burns Lake	Northern	Northern Interior
Cache Creek	Interior	Thompson Cariboo Shuswap
Campbell River	Vancouver Island	North Vancouver Island
Canal Flats	Interior	East Kootenay
Castlegar	Interior	Kootenay Boundary
Cawston	Interior	Okanagan
Cedar	Vancouver Island	Central Vancouver Island
Central Saanich	Vancouver Island	South Vancouver Island
Charlie Lake	Northern	Northeast
Chase	Interior	Thompson Cariboo Shuswap
Chemainus	Vancouver Island	Central Vancouver Island
Chetwynd	Northern	Northeast
Chilliwack	Fraser	Fraser East
Christina Lake	Interior	Kootenay Boundary
Clearwater	Interior	Thompson Cariboo Shuswap
Cobble Hill	Vancouver Island	Central Vancouver Island
Coldstream	Interior	Okanagan
Colwood	Vancouver Island	South Vancouver Island
Comox	Vancouver Island	North Vancouver Island
Coombs	Vancouver Island	Central Vancouver Island
Coquitlam	Fraser	Fraser North
Cortes Island	Vancouver Island	North Vancouver Island
Courtenay	Vancouver Island	North Vancouver Island
Cowichan Bay	Vancouver Island	Central Vancouver Island
Cranbrook	Interior	East Kootenay
Crescent Valley	Interior	Kootenay Boundary
Creston	Interior	East Kootenay
Cultus Lake	Fraser	Fraser East
Cumberland	Vancouver Island	North Vancouver Island

List of Townships and Corresponding Health Regions

Township Name	Health Authority	Health Services Delivery Area
Dawson Creek	Northern	Northeast
Dease Lake	Northern	Northwest
Delta	Fraser	Fraser South
Duncan	Vancouver Island	Central Vancouver Island
Edgewood	Interior	Kootenay Boundary
Elkford	Interior	East Kootenay
Enderby	Interior	Okanagan
Errington	Vancouver Island	Central Vancouver Island
Esquimalt	Vancouver Island	South Vancouver Island
Fairmont Hot Springs	Interior	East Kootenay
Falkland	Interior	Thompson Cariboo Shuswap
Fort Nelson	Northern	Northeast
Fort St. James	Northern	Northern Interior
Fort St. John	Northern	Northeast
Gabriola Island	Vancouver Island	Central Vancouver Island
Galiano Island	Vancouver Island	South Vancouver Island
Gibsons	Vancouver Coastal	North Shore/Coast Garibaldi
Gillies Bay	Vancouver Coastal	North Shore/Coast Garibaldi
Gold River	Vancouver Island	North Vancouver Island
Golden	Interior	East Kootenay
Grand Forks	Interior	Kootenay Boundary
Harrison Hot Springs	Fraser	Fraser East
Hope	Fraser	Fraser East
Horsefly	Interior	Thompson Cariboo Shuswap
Houston	Northern	Northwest
Invermere	Interior	East Kootenay
Isle Pierre	Northern	Northern Interior
Kamloops	Interior	Thompson Cariboo Shuswap
Kaslo	Interior	Kootenay Boundary
Kelowna	Interior	Okanagan
Kent	Fraser	Fraser East
Kimberley	Interior	East Kootenay
Kispiox	Northern	Northwest
Kitamaat Village	Northern	Northwest
Kitimat	Northern	Northwest
Kitseguecla (Gitsegukla)	Northern	Northwest
Lac La Hache	Interior	Thompson Cariboo Shuswap
Ladysmith	Vancouver Island	Central Vancouver Island
Lake Country, District Of	Interior	Okanagan
Lake Cowichan	Vancouver Island	Central Vancouver Island
Langford	Vancouver Island	South Vancouver Island
Langley	Fraser	Fraser South

List of Townships and Corresponding Health Regions

Township Name	Health Authority	Health Services Delivery Area
Lantzville	Vancouver Island	Central Vancouver Island
Lee Creek	Interior	Thompson Cariboo Shuswap
Lillooet	Interior	Thompson Cariboo Shuswap
Lions Bay	Vancouver Coastal	North Shore/Coast Garibaldi
Logan Lake	Interior	Thompson Cariboo Shuswap
Lumby	Interior	Okanagan
Mabel Lake	Interior	Okanagan
Mackenzie	Northern	Northern Interior
Madeira Park	Vancouver Coastal	North Shore/Coast Garibaldi
Malakwa	Interior	Thompson Cariboo Shuswap
Maple Ridge	Fraser	Fraser North
Mayne Island	Vancouver Island	South Vancouver Island
Merritt	Interior	Thompson Cariboo Shuswap
Mill Bay	Vancouver Island	Central Vancouver Island
Mission	Fraser	Fraser East
Nakusp	Interior	Kootenay Boundary
Nanaimo	Vancouver Island	Central Vancouver Island
Nanoose Bay	Vancouver Island	Central Vancouver Island
Nelson	Interior	Kootenay Boundary
New Denver	Interior	Kootenay Boundary
New Hazelton	Northern	Northwest
New Westminster	Fraser	Fraser North
North Cowichan	Vancouver Island	Central Vancouver Island
North Vancouver	Vancouver Coastal	North Shore/Coast Garibaldi
Oak Bay	Vancouver Island	South Vancouver Island
Okanagan Falls	Interior	Okanagan
Olalla	Interior	Okanagan
Oliver	Interior	Okanagan
Osoyoos	Interior	Okanagan
Parksville	Vancouver Island	Central Vancouver Island
Peachland	Interior	Okanagan
Pemberton	Vancouver Coastal	North Shore/Coast Garibaldi
Pender Island	Vancouver Island	South Vancouver Island
Penticton	Interior	Okanagan
Pink Mountain	Northern	Northeast
Pitt Meadows	Fraser	Fraser North
Port Alberni	Vancouver Island	Central Vancouver Island
Port Alice	Vancouver Island	North Vancouver Island
Port Coquitlam	Fraser	Fraser North
Port Hardy	Vancouver Island	North Vancouver Island
Port Mcneill	Vancouver Island	North Vancouver Island
Port Moody	Fraser	Fraser North

List of Townships and Corresponding Health Regions

Township Name	Health Authority	Health Services Delivery Area
Powell River	Vancouver Coastal	North Shore/Coast Garibaldi
Prince George	Northern	Northern Interior
Prince Rupert	Northern	Northwest
Princeton	Interior	Okanagan
Prophet River	Northern	Northeast
Quadra Island	Vancouver Island	North Vancouver Island
Qualicum Beach	Vancouver Island	Central Vancouver Island
Queen Charlotte City	Northern	Northwest
Quesnel	Northern	Northern Interior
Radium Hot Springs	Interior	East Kootenay
Revelstoke	Interior	Thompson Cariboo Shuswap
Richmond	Vancouver Coastal	Richmond
Roberts Creek	Vancouver Coastal	North Shore/Coast Garibaldi
Rock Creek	Interior	Kootenay Boundary
Saanich	Vancouver Island	South Vancouver Island
Salmo	Interior	Kootenay Boundary
Salmon Arm	Interior	Thompson Cariboo Shuswap
Salt Spring Island	Vancouver Island	South Vancouver Island
Sayward	Vancouver Island	North Vancouver Island
Sechelt	Vancouver Coastal	North Shore/Coast Garibaldi
Seton Portage	Interior	Thompson Cariboo Shuswap
Shawnigan Lake	Vancouver Island	Central Vancouver Island
Sicamous	Interior	Thompson Cariboo Shuswap
Smithers	Northern	Northwest
Sointula	Vancouver Island	North Vancouver Island
Sooke	Vancouver Island	South Vancouver Island
South Slokan	Interior	Kootenay Boundary
South Wellington	Vancouver Island	Central Vancouver Island
Sparwood	Interior	East Kootenay
Squamish	Vancouver Coastal	North Shore/Coast Garibaldi
Sullivan Bay	Vancouver Island	North Vancouver Island
Summerland	Interior	Okanagan
Surrey	Fraser	Fraser South
Terrace	Northern	Northwest
Trail	Interior	Kootenay Boundary
Tumbler Ridge	Northern	Northeast
Ucluelet	Vancouver Island	Central Vancouver Island
Vancouver	Vancouver Coastal	Vancouver
Vanderhoof	Northern	Northern Interior
Vernon	Interior	Okanagan
Victoria	Vancouver Island	South Vancouver Island
West Kelowna	Interior	Okanagan

List of Townships and Corresponding Health Regions

Township Name	Health Authority	Health Services Delivery Area
West Vancouver	Vancouver Coastal	North Shore/Coast Garibaldi
Whisky Creek	Vancouver Island	Central Vancouver Island
Whistler	Vancouver Coastal	North Shore/Coast Garibaldi
White Rock	Fraser	Fraser South
Williams Lake	Interior	Thompson Cariboo Shuswap
Winlaw	Interior	Kootenay Boundary
Wonowon	Northern	Northeast
Yale	Fraser	Fraser East
Ymir	Interior	Kootenay Boundary
Youbou	Vancouver Island	Central Vancouver Island
Zeballos	Vancouver Island	North Vancouver Island