

**PATTULLO BRIDGE REPLACEMENT  
PROJECT**

**SCHEDULE A**

**CERTIFIED PROJECT DESCRIPTION  
FOR  
AN ENVIRONMENTAL ASSESSMENT CERTIFICATE**

April 04, 2019

## **INTERPRETATION**

In this Certified Project Description, terms that are capitalized but not defined have the same meaning as those terms defined elsewhere in the Certificate, including in the Table of Conditions.

This Certified Project Description describes the Project authorized by this Certificate, but does not obligate the Holder to construct or operate any aspect of the Project unless otherwise stated.

## **DEFINITIONS**

|        |  |
|--------|--|
| Holder | The Proponent or, if this Certificate has been transferred in accordance with the conditions below, the person to whom this Certificate has been transferred in accordance with such conditions. |
|--------|--|

## **ABBREVIATIONS**

|             |                                      |
|-------------|--------------------------------------|
| Bridge      | New 4-lane bridge                    |
| Certificate | Environmental Assessment Certificate |
| PER         | Project and Environmental Review     |
| Project     | Pattullo Bridge Replacement Project  |
| VFPA        | Vancouver Fraser Port Authority      |

# 1. OVERVIEW

The Pattullo Bridge Replacement Project (Project) replaces the Pattullo Bridge with a new 4-lane bridge (Bridge) across the Fraser River to connect Columbia Street/East Columbia Street in New Westminster, British Columbia to King George Boulevard and Highway 17 in Surrey, British Columbia. The existing Pattullo Bridge will be demolished when the Bridge is completed.

Unless otherwise specified in this Certified Project Description, Project Components and Activities as described below are located within the Certified Project Boundary, shown in the Certified Project Area drawing included in **Appendix A**.

## 2. PROJECT COMPONENTS AND ACTIVITIES

Project Components and Activities comprise:

- Bridge and approaches;
- Demolition of the existing Pattullo Bridge; and
- Temporary activities.

### 2.1 New Bridge and Approaches

The Project includes:

- A 4-lane bridge over the Fraser River (the Bridge), with a multi-use path for cyclists and pedestrians on each side that connect to existing bike, pedestrian, or multi-use pathways in Surrey and New Westminster;
- An entrance ramp to the Bridge from Columbia Street or East Columbia Street;
- Exit ramps from the Bridge to East Columbia Street and Highway 17;
- Reconfiguration and modification of existing roads and intersections, including, but not limited to the following:
  - McBride Boulevard, Royal Avenue, East Columbia Street and Columbia Street in New Westminster;
  - King George Boulevard, at approximately 112<sup>th</sup>/111 A Avenue and Bridge Road in Surrey;
  - Intersection of Bridgeview Drive and King George Boulevard in Surrey; and
  - Grade separation of Highway 17 and Old Yale Road in Surrey;
- Connections between the multi-use pathways on the Bridge and multi-use path systems in Surrey and New Westminster; and
- A safety and security fence on all exterior sides of the Bridge.

The multi-use pathways for cyclists and pedestrians on the Bridge will be separated from motorized traffic by a fixed barrier.

The Bridge will have a maximum of four (4) in-river piers. All in-river piers will be located outside of the Navigation Protection Zone defined by Vancouver Fraser Port Authority in the *Project and Environmental Review (PER) Project Permit* for the Project.

The Bridge will have a length of up to 1.5 kilometres, abutment to abutment, and a minimum vertical navigational clearance that accommodates the Navigation Protection Zone subject to the requirements of the *Navigation Protection Act*.

The Bridge and approaches will be located within the Certified Project Boundary. A maximum of nine (9) piers will be located within the South Mainline Approach Area shown in the Certified Project Area drawing included in **Appendix A**.

## **2.2 Demolition of the Existing Pattullo Bridge**

Project components and activities associated with demolition of the Pattullo Bridge include the following:

- Demolition and removal of utilities and electrical systems located on/connected to the existing Pattullo Bridge and approaches and associated rights-of-way; and
- Demolition and removal of the Pattullo Bridge.

In-river piers of the existing bridge must be removed such that any remaining portions, retained to minimize potential impacts on stability of the riverbed, do not obstruct or impede safe navigation as per the requirements of the *Navigation Protection Act*.

## **2.3 Temporary Activities**

The Project includes the following temporary components and activities during Construction and Demolition:

- Site office(s);
- Temporary barge anchoring, loading and unloading;
- Laydown areas;
- Temporary trestle to provide access to in-river construction areas;
- Access roads;
- Preloading and associated retaining walls; and
- Other ancillary components and activities.

With the exception of temporary barge anchoring, loading and unloading, site offices, and laydown areas, the above temporary components and activities will be located within the Certified Project Boundary.

Barge loading and unloading facilities will not be located within the Barge Facility Exclusion Zone shown in the Certified Project Area drawing included in Appendix A.

# APPENDIX A:

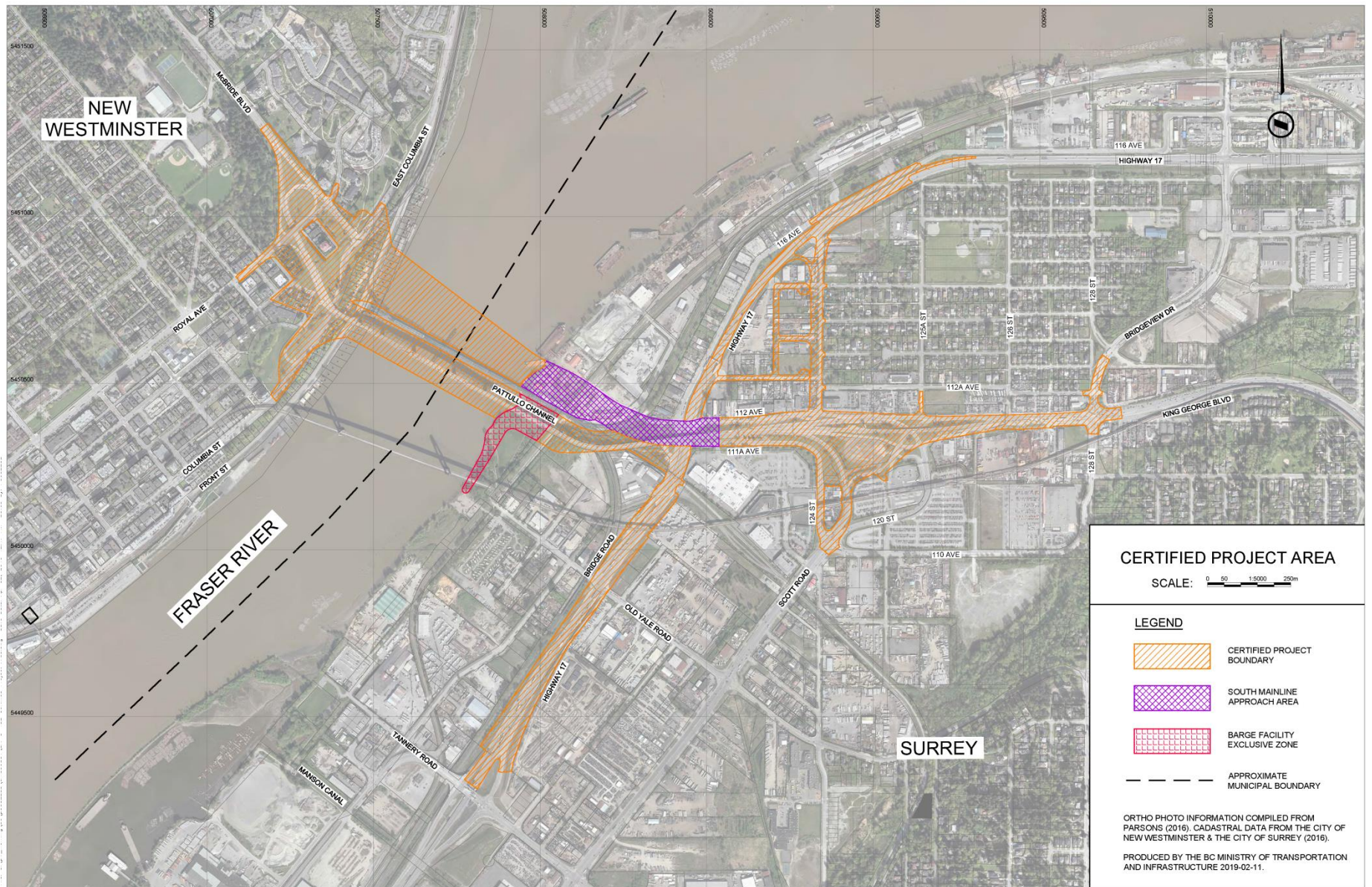


Figure 1: Certified Project Area