

**WORKERS' COMPENSATION APPEAL TRIBUNAL (WCAT)
QUARTERLY REPORT TO THE COMMUNITY
FOR THE PERIOD ENDED MARCH 31, 2012**

WCAT's mandate is to decide appeals brought by workers and employers from decisions of the Workers' Compensation Board (the Board), which operates as WorkSafeBC. WCAT decides compensation, assessment, and prevention appeals from decisions of the Review Division of the Board. We also decide direct appeals from Board decisions regarding compensation claim reopenings by application and discriminatory actions complaints. In addition, we decide direct applications for certificates to the Court.

As of March 31, 2011, our total active inventory was 3,068 appeals. The vast majority of appeals are compensation appeals.

During the first quarter of 2012, we made decisions on the merits of 932 appeals and made summary decisions on a further 223 appeals that were rejected, dismissed, withdrawn, or suspended. An appeal may raise numerous issues and WCAT may allow, allow in part, or deny the appeal on each issue. During the quarter, we decided 1,333 issues.

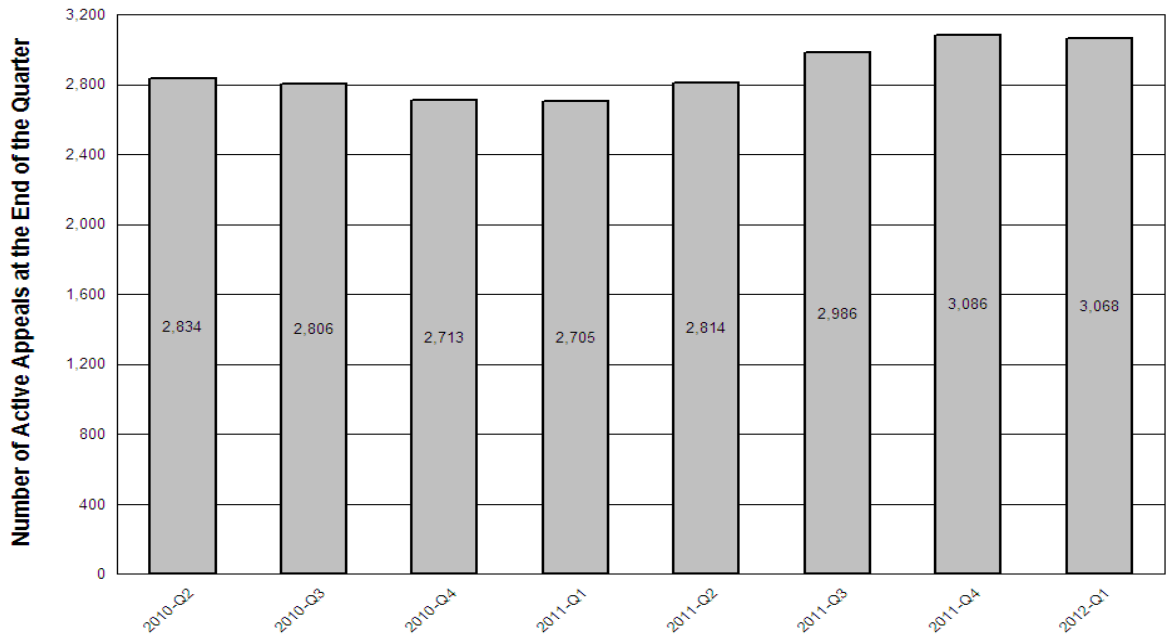
When WCAT makes a decision on the merits of an appeal, the decision under appeal may be varied, confirmed, or cancelled by WCAT. "Vary" means that WCAT varied the previous decision in whole or in part. Accordingly, whether WCAT has fully granted the remedies requested by the appellant on all issues arising under the appeal or merely changed a minor aspect of the previous decision, the decision is considered to have been "varied". "Confirm" means that WCAT agreed with all aspects of the previous decision. "Cancel" means that WCAT set aside the previous decision without a new or changed decision being provided in its place.

During the quarter, WCAT varied 45% of the decisions under appeal and confirmed 55%. In deciding the issues arising out of those appeals, WCAT allowed the appeals on 31% of the issues, allowed them in part on 7%, and denied them on 62%.

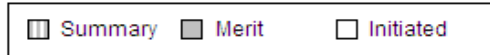
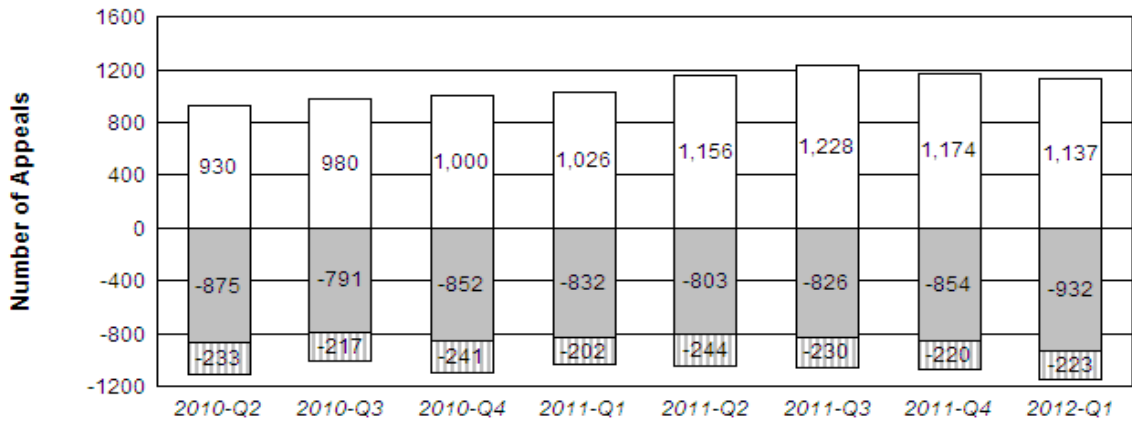
Attached are graphs and tables that contain further statistical information.

Jill Callan, Chair

**Workers' Compensation Appeal Tribunal
Number of Active Appeals In Inventory**



INTAKE and OUTPUT



A. SUMMARY STATISTICS - ALL APPEALS

1. OUTCOMES of MERIT DECISIONS:

Outcome	2012-Q1	Last 12 Months
Confirm	55.1%	55.7%
Vary	44.8%	44.2%
Cancelled	0.1%	0.1%
Total	100.0%	100.0%

2. OUTCOMES of ISSUES:

Outcome	2012-Q1	Last 12 Months
Denied	61.8%	62.1%
Allowed	31.4%	31.9%
Allowed in Part	6.8%	6.0%
Total	100.0%	100.0%

3. REASONS for ISSUE OUTCOMES:

Outcome	2012-Q1	Last 12 Months
Denied	61.8%	62.1%
Error in Law	0.4%	0.6%
Error in Policy	0.4%	0.5%
Reweigh Existing Evidence	6.5%	6.9%
Reweigh with New Evidence	30.9%	29.9%
Total	100.0%	100.0%