

This report summarizes all accidental deaths of motorcyclists in traffic-related motor vehicle incidents (MVIs) between January 1, 2009 and December 31, 2018.

**Inclusion Criteria:** In this report, the term “motorcyclist” is defined as an individual known to have been riding a motorcycle, moped, scooter, or street-legal, licensed dirt bike on a public highway when the MVI occurred.

For BC Coroners Service (BCCS) statistics, a traffic-related MVI is one occurring on a public “highway”, as defined in the *Motor Vehicle Act*. This definition encompasses any roadway intended for or used by the public for the passage of vehicles, and any private place to which the public has access or is invited (e.g., for parking or vehicle servicing). Private driveways and forest service roads are excluded, except where the forest service road is open to public use. Incidents involving off-road vehicles, industrial vehicles, and farm vehicles are included when occurring on public highways, but excluded when occurring off-road or on a worksite.

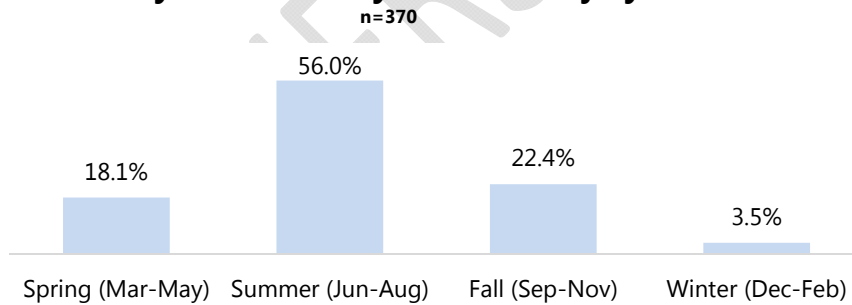
**Caveats:** As the BCCS operates in a live database environment, the data are considered preliminary and subject to change. These data were compiled by date of death, which may differ from the date of injury. In some cases, the death may occur months or years subsequent to injury. These statistics may vary from those reported by other agencies because of differences in data definitions or reporting standards.

### General Summary:

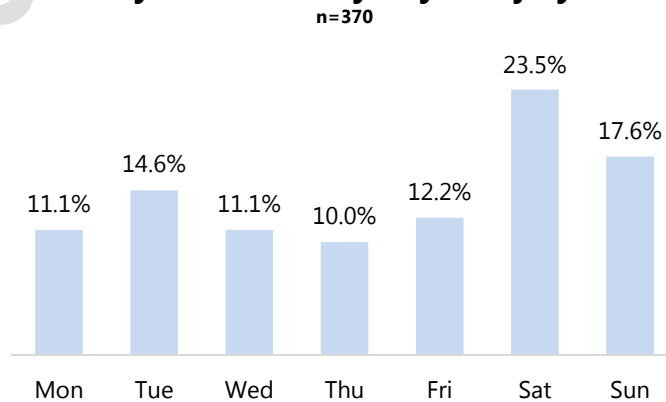
- There were 51 motorcyclist deaths in 2018. This is the highest annual total of the past decade (2009-2018), and is a 50% increase over the number of deaths in 2017 (34).
- The majority of motorcyclists who died from 2009 to 2018 were male (91%) and were known to reside in BC (82%).
- The Interior and Fraser health authority regions continue to have the highest percentages of fatal motorcyclist injuries (36% and 27%, respectively).
- 56% of decedents were injured in the summer months. Few injuries (4%) occurred in the winter.
- Motorcyclists were more likely to be injured on Saturdays (24% of deaths) and Sundays (18% of deaths) than on other days of the week.
- From 2013-2017, the annual number of motorcyclist deaths per 10,000 motorcycle licences ranged from 1.2 to 1.3. Data for 2018 is not yet available.

Motorcyclist Deaths by Month, 2009-2018 <sup>1</sup>										
Month	2009	2010	2011	2012	2013	2014	2015	2016	2017	2018
January	0	0	0	1	1	1	1	0	0	0
February	2	2	0	0	1	0	0	1	1	0
March	0	2	3	1	2	0	2	0	0	0
April	2	2	1	1	1	4	2	3	1	1
May	6	5	0	1	5	7	4	3	1	3
June	9	7	7	0	0	4	6	2	5	8
July	10	4	7	8	3	7	9	12	6	19
August	5	5	7	6	9	7	6	7	11	10
September	8	6	8	3	5	5	2	5	5	7
October	4	5	2	2	3	0	4	0	3	3
November	1	0	0	3	2	2	0	0	0	0
December	1	0	0	0	0	0	0	1	1	0
<b>Total</b>	<b>48</b>	<b>38</b>	<b>35</b>	<b>26</b>	<b>32</b>	<b>37</b>	<b>36</b>	<b>34</b>	<b>34</b>	<b>51</b>

**Fig. 1. Motorcyclist Deaths by Season of Injury, 2009-2018<sup>2</sup>**

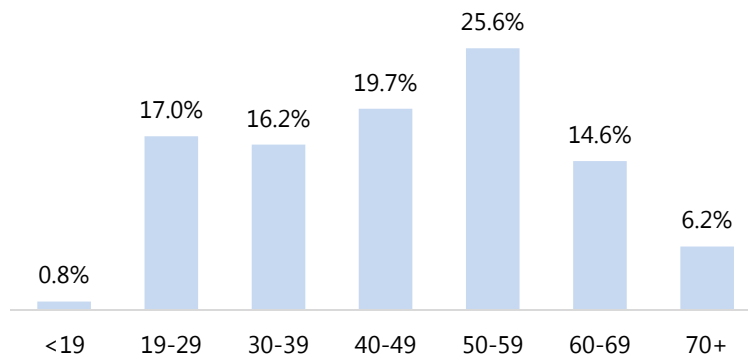


**Fig. 2. Motorcyclist Deaths by Day of Injury, 2009-2018<sup>2</sup>**



Motorcyclist Deaths by Age Group, 2009-2018										
Age	2009	2010	2011	2012	2013	2014	2015	2016	2017	2018
<19	0	1	0	0	0	1	0	1	0	0
19-29	10	4	7	6	9	1	5	5	1	15
30-39	5	4	4	5	6	5	7	6	9	9
40-49	13	10	10	7	2	5	9	9	4	4
50-59	13	14	11	4	6	14	7	6	11	9
60-69	7	3	2	3	4	10	5	6	5	9
70+	0	2	1	1	5	1	3	1	4	5
<b>Total</b>	<b>48</b>	<b>38</b>	<b>35</b>	<b>26</b>	<b>32</b>	<b>37</b>	<b>36</b>	<b>34</b>	<b>34</b>	<b>51</b>

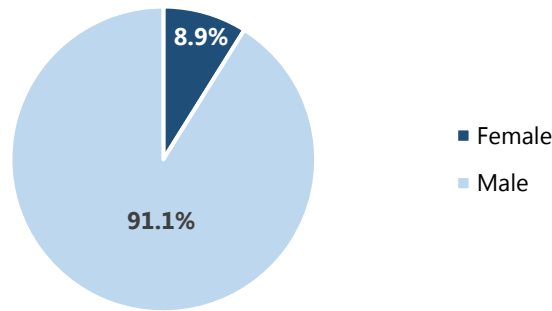
**Fig. 3. Motorcyclist Deaths by Age Group as % of Total, 2009-2018**  
n=371



Motorcyclist Deaths by Sex, 2009-2018										
Sex	2009	2010	2011	2012	2013	2014	2015	2016	2017	2018
Female	4	5	2	1	3	2	4	3	5	4
Male	44	33	33	25	29	35	32	31	29	47
Total	48	38	35	26	32	37	36	34	34	51

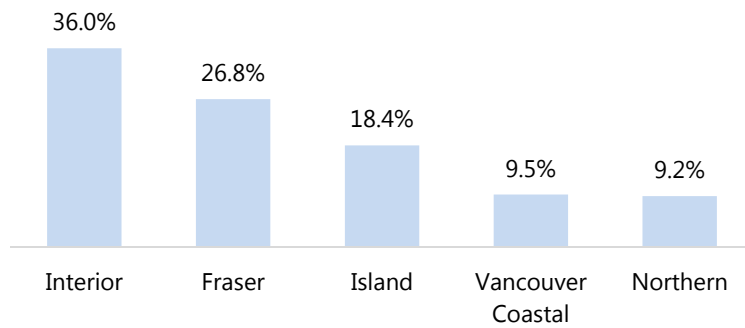
**Fig. 4. Motorcyclist Deaths by Sex as % of Total, 2009-2018**

n=371



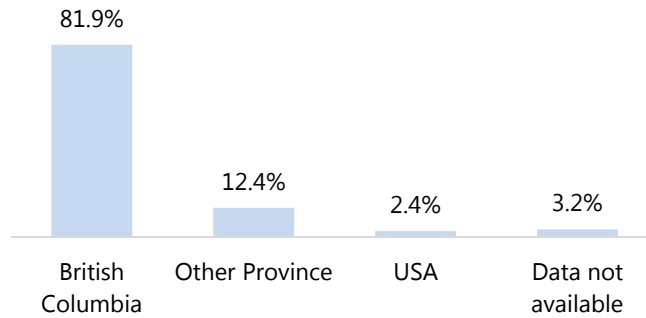
Motorcyclist Deaths by Health Authority of Injury, 2009-2018 <sup>4,5</sup>										
HA	2009	2010	2011	2012	2013	2014	2015	2016	2017	2018
Interior	21	14	11	7	4	18	15	14	13	16
Fraser	10	8	10	8	8	9	10	10	9	17
Island	8	12	5	2	7	6	5	6	4	13
Van. Coastal	6	2	3	5	6	2	3	2	4	2
Northern	3	1	6	4	7	2	3	2	3	3
<b>Total</b>	<b>48</b>	<b>37</b>	<b>35</b>	<b>26</b>	<b>32</b>	<b>37</b>	<b>36</b>	<b>34</b>	<b>33</b>	<b>51</b>

**Fig. 5. Motorcyclist Deaths by Health Authority of Injury, 2009-2018<sup>3, 5</sup>**  
 n=369

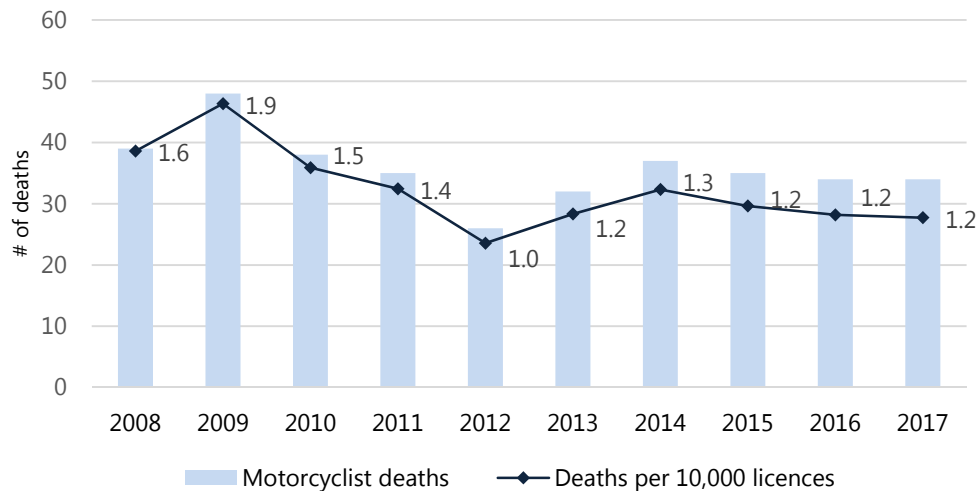


Motorcyclist Deaths by Decedent Residence, 2009-2018 <sup>3,4</sup>										
Place of Residence	2009	2010	2011	2012	2013	2014	2015	2016	2017	2018
British Columbia	42	34	29	17	29	29	32	26	26	40
Other province	5	3	6	3	3	6	4	7	4	5
USA	1	1	0	1	0	1	0	0	3	2
Data not available	0	0	0	5	0	1	0	1	1	4
<b>Total</b>	<b>48</b>	<b>38</b>	<b>35</b>	<b>26</b>	<b>32</b>	<b>37</b>	<b>36</b>	<b>34</b>	<b>34</b>	<b>51</b>

**Fig. 6. Motorcyclist Deaths by Place of Residence, 2009-2018**  
n=371



**Fig. 7. Motorcyclist Deaths per 10,000 Motorcycle Licences, 2008-2017<sup>6</sup>**

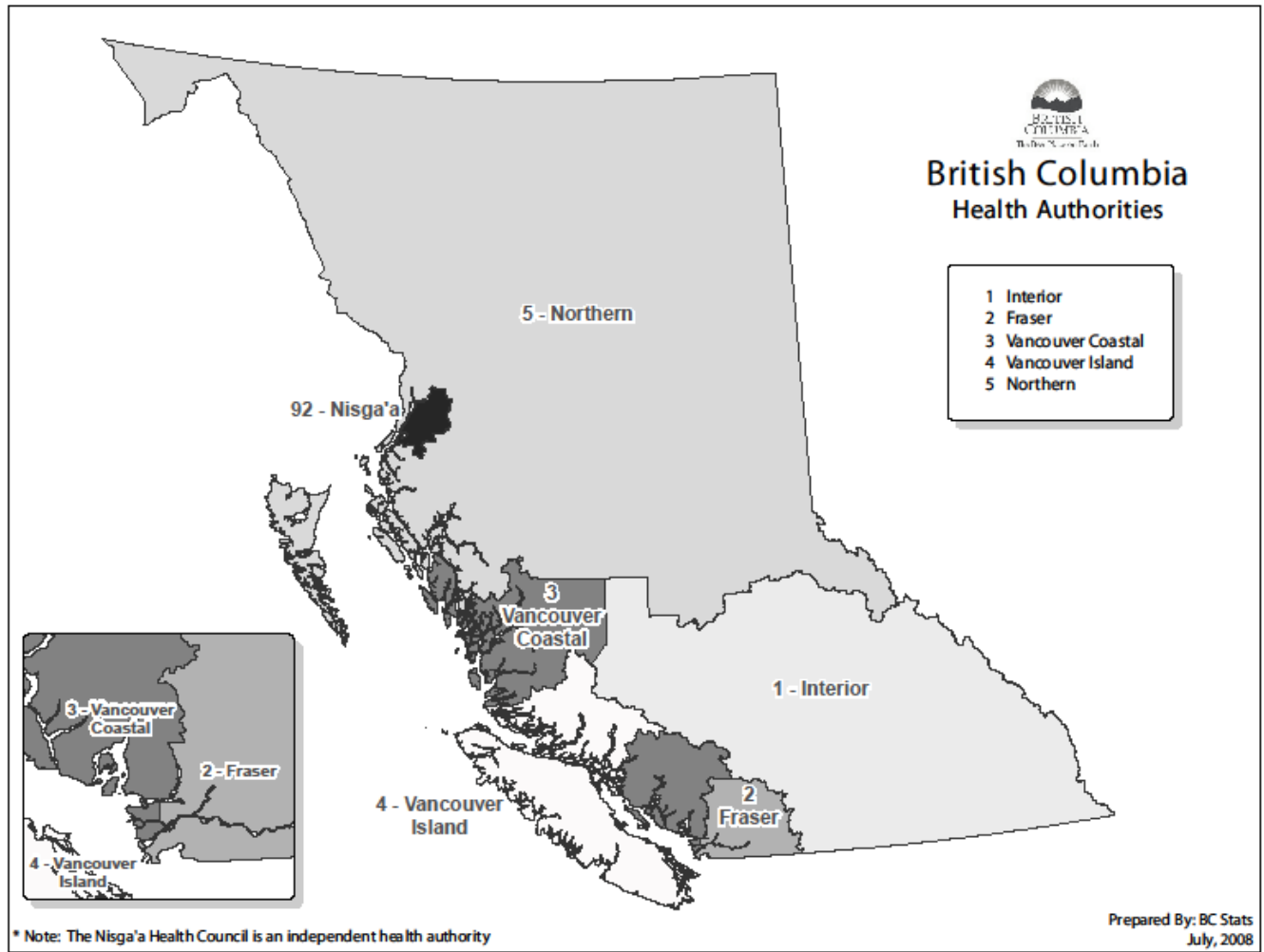


## Notes

1. These data were compiled by date of death, which may differ from the date of injury. In some cases, the death may occur months or years subsequent to injury.
2. One case with an unknown date of injury was excluded.
3. See **Appendix**, below, for a map of health authorities.
4. Health authority of injury is based on township of injury. Where township of injury was unknown, township of death was used.
5. Deaths resulting from injuries incurred out of province (n=2) are excluded.
6. Motorcycle licence counts were provided by ICBC. Counts include active Class 6 and Class 8 motorcycle licences on December 31<sup>st</sup> of each year. Note that licence data may vary at different points in the year.

BC CORONERS SERVICE

## Appendix



More information about the health regions can be found at <http://www.bcstats.gov.ca/statisticsbysubject/geography/referencemaps/health.aspx>