

# Major Primary Timber Processing Facilities In British Columbia

2004



Ministry of Forests and Range  
Economics and Trade Branch





# Major Primary Timber Processing Facilities in British Columbia

2004

Economics and Trade Branch  
Ministry of Forests and Range  
Victoria, B.C.

July 2005



## Foreword

This is the 2004 edition of the Ministry of Forests and Range publication of *Major Primary Timber Processing Facilities in British Columbia* and refers to timber processing mills that have primary log processing capability and which operated during 2004. Coverage does not include re-manufacturing plants. Pulp and paper mills and panel plants are included in this report even though some do not have primary log processing capabilities. Where a mill produces more than one product (e.g. lumber and plywood; lumber and paper), each operation is listed in the respective sections of the report.

The information was gathered through a survey of individual processing mills. If a mill did not submit a response, mill specific information reported in trade publications, directories and corporate annual reports may have been used. In some cases Ministry of Forests and Range staff provided estimates based on their knowledge of the operation and information reported in previous years. This year's report includes a section analyzing the aggregate data gathered through this survey.

The Forest Regions and Forest Districts identified for each mill reflect the new Ministry of Forests and Range organizational structure, effective April 1, 2003, consisting of headquarters in Victoria, three regions and 29 districts.

This report is available free of charge on the Ministry of Forests and Range Internet site at:

<http://www.for.gov.bc.ca/het/>

The report is updated annually. Comments, errors or omissions may be sent to one of the following locations:

Economics and Trade Branch  
Ministry of Forests and Range  
P.O. Box 9514, Station Prov Gov,  
Victoria, B.C.  
V8W 9C2

Phone (250) 387-8610  
FAX (250) 387-5050

E-mail: [Forests.EconomicsAndTradeBranchOffice@gems3.gov.bc.ca](mailto:Forests.EconomicsAndTradeBranchOffice@gems3.gov.bc.ca)

### **Acknowledgements**

The cooperation of mill personnel who responded to the Ministry of Forests and Range survey is gratefully acknowledged.

The important role played by Ministry of Forests and Range regional and district staff in securing mill responses is also gratefully acknowledged.

## Table of Contents

	PAGE
Map of Forest Regions and Districts effective April 1, 2003.....	4
Analysis .....	5
Chip Mills .....	19
Log Home Mills .....	21
Lumber Mills .....	25
Pole and Post Mills .....	35
Pulp and Paper Mills .....	39
Shake and Shingle Mills.....	43
Veneer, Plywood, and Other Panel Mills.....	47
Other Primary Processing Mills.....	51

## Abbreviations for Products

UTI	- Utility Pole
PLE	- Other Pole
PST	- Fence Post
PLP	- Pulp
PPR	- Paper
VNR	- Veneer
PLY	- Plywood
OSB	- Oriented Strand Board
MDF	- Medium Density Fibreboard
PNL	- Other Panel
GTR	- Guitar
LVL	- Laminated Veneer Lumber
SSB	- Shake and Shingle Block

# Forest Region and District Boundaries - April 1, 2003

## RSI · Southern Interior Forest Region (Kamloops)

- DMH · 100 Mile House Forest District (100 Mile House)
- DAB · Arrow Boundary Forest District (Castlegar, Grand Forks, Nakusp)
- DCS · Cascades Forest District (Merritt, Lillooet, Princeton)
- DCC \* Central Cariboo Forest District (Williams Lake, Horsefly, Likely)
- DCH · Chilcotin Forest District (Alexis Creek)
- DCO · Columbia Forest District (Revelstoke, Golden)
- DHW · Headwaters Forest District (Clearwater, McBride)
- DKA \* Kamloops Forest District (Kamloops)
- DKL \* Kootenay Lake Forest District (Nelson)
- DOS \* Okanagan Shuswap Forest District (Vernon, Penticton, Salmon Arm)
- DQU · Quesnel Forest District (Quesnel)
- DRM · Rocky Mountain Forest District (Cranbrook, Invermere)

\* Denotes BC Timber Sales Location

## RNI · Northern Interior Forest Region (Prince George)

- DFN · Fort Nelson Forest District (Fort Nelson)
- DJA · Fort St. James Forest District (Fort St. James)
- DKM \* Kalum Forest District (Terrace)
- DMK · Mackenzie Forest District (Mackenzie)
- DND \* Nadina Forest District (Burns Lake, Houston)
- DPC \* Peace Forest District (Dawson Creek, Fort St. John)
- DPG \* Prince George Forest District (Prince George)
- DSS · Skeena Stikine Forest District (Smithers, Dease Lake, Hazelton)
- DVA \* Vanderhoof Forest District (Vanderhoof)

## RCO · Coast Forest Region (Nanaimo)

- DCR \* Campbell River Forest District (Campbell River)
- DCK \* Chilliwack Forest District (Chilliwack)
- DNC · North Coast Forest District (Prince Rupert)
- DIC \* North Island - Central Coast Forest District (Port McNeill, Hagensborg)
- QDC · Queen Charlotte Islands Forest District (Queen Charlotte City)
- DSI · South Island Forest District (Port Alberni, Duncan)
- DSQ · Squamish Forest District (Squamish)
- DSC · Sunshine Coast Forest District (Powell River, Sechelt)





## **ANALYSIS**

### **Introduction**

This section of the report presents summary statistics derived from the 2004 mill survey as well as some time series data for British Columbia lumber mills. It also contains a brief analysis of the recent mergers in the BC forest industry.

First, fibre supply and use in the province in 2004 is examined through a series of pie charts. Then, selected statistics for medium and large lumber mills for 1990 to 2004 are presented. In 2004 there were three significant mergers in BC's forest industry. The final part of this analysis section briefly describes these mergers and provides some data related to forest industry consolidation in British Columbia over the past 15 years.

### **A. Wood Fibre Supply and Use in British Columbia, 2004**

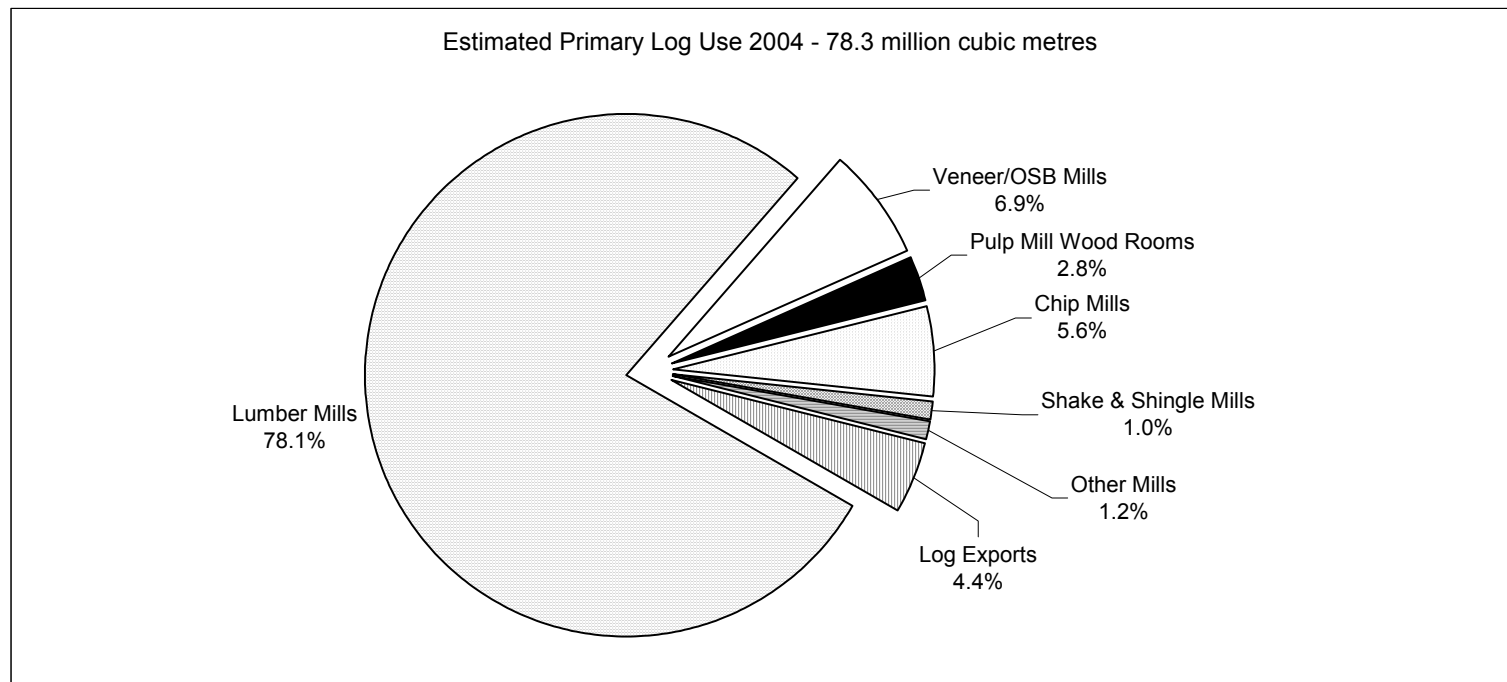
Figure 1 shows estimated log use in British Columbia by mill type. Lumber mills are estimated to use 78% of the log harvest and imports in 2004. Veneer and OSB mills were the next largest user of logs at 7%.

Figure 2 estimates product recovery from lumber mills. It shows that 47% of the volume of wood entering lumber mills is converted to lumber, with the remaining 53% being converted to chips, sawdust and shavings.

Figure 3 combines figures 1 and 2 with a chart showing fibre used by pulp mills. In 2004, 94% of the fibre used by pulp mills is in the form of chips and sawdust obtained from other mills, while 6% is from logs chipped in the pulp mill.

**Figure 1: Estimated British Columbia Primary Log Use - 2004**

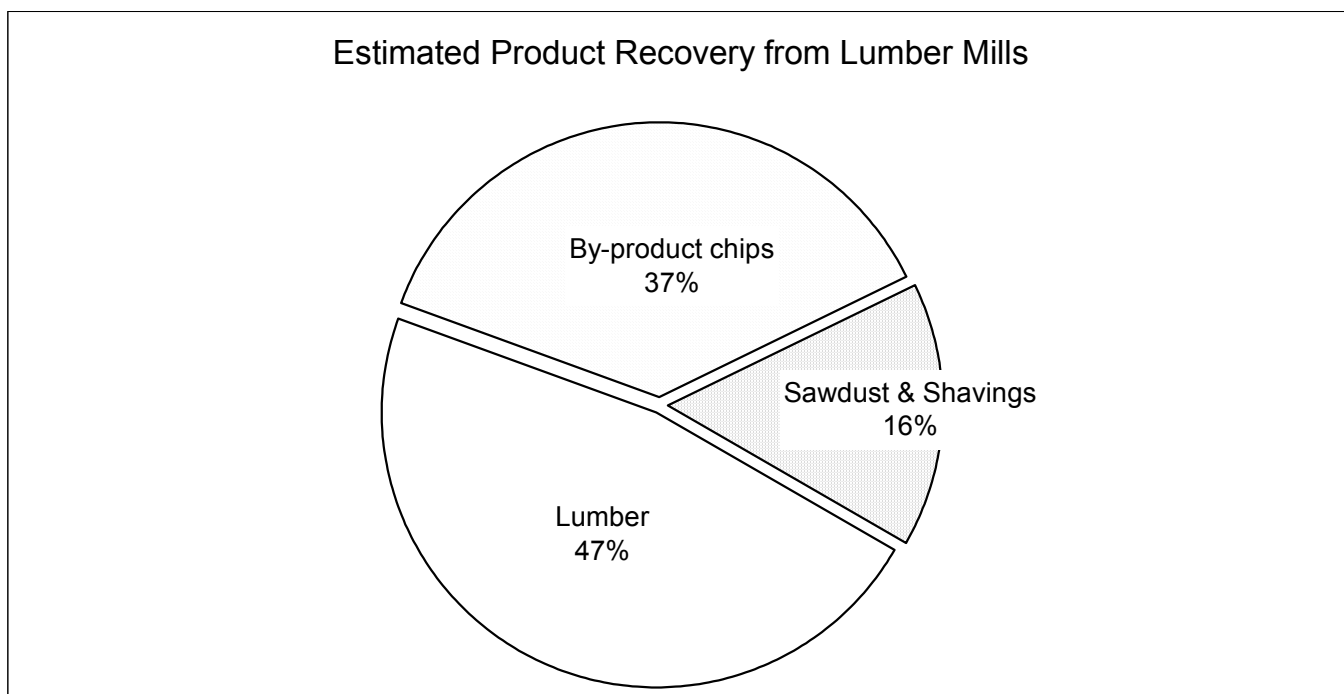
Log Use By:	COAST			INTERIOR			PROVINCE		
	Number of Mills	Estimated Volume Used (000 m <sup>3</sup> )	Per Cent	Number of Mills	Estimated Volume Used (000 m <sup>3</sup> )	Per Cent	Number of Mills	Estimated Volume Used (000 m <sup>3</sup> )	Per Cent
Lumber Mills	76	12,145	58.1%	118	49,030	85.4%	194	61,175	78.1%
Veneer/OSB Mills	4	1,402	6.7%	15	4,000	7.0%	19	5,402	6.9%
Pulp Mill Wood Rooms	9	1,331	6.4%	13	848	1.5%	22	2,179	2.8%
Chip Mills	7	2,050	9.8%	12	2,309	4.0%	19	4,359	5.6%
Shake & Shingle Mills	35	778	3.7%	4	17	0.0%	39	794	1.0%
Other Mills	35	134	0.6%	77	841	1.5%	112	975	1.2%
Log Exports		3,071	14.7%		379	0.7%		3,451	4.4%
<b>Total Use</b>	<b>166</b>	<b>20,911</b>	<b>100.0%</b>	<b>239</b>	<b>57,424</b>	<b>100.0%</b>	<b>405</b>	<b>78,335</b>	<b>100.0%</b>
2004 Harvest								83,657	
Less Waste and Rejects (estimate)								1,698	
Plus Log Imports								61	
<b>Total Available</b>								<b>82,019</b>	
<b>Difference</b>								<b>3,685</b>	<b>4.5%</b>



Sources:  
 Survey data; Statistics Canada trade data; BC Ministry of Forests log export statistics.

**Figure 2: Estimates of Product Recovery from Lumber Mills - 2004**

	Units	Coast	Interior	Province
<b>Number of Mills</b>		76	118	194
<b>Log Input</b>	('000 m <sup>3</sup> )	12,145	49,030	61,175
<b>Lumber Output</b>				
Lumber Output (nominal measure)	(mfbm)	2,763	13,682	16,445
Lumber Recovery Factor	(mfbm/m <sup>3</sup> )	0.227	0.279	0.269
Conversion Factor *	(m <sup>3</sup> /mfbm)	1.835	1.737	1.753
= Actual Volume of Lumber Produced	('000 m <sup>3</sup> )	5,070	23,766	28,836
As Per Cent of Log Input	(%)	42%	48%	47%
<b>By Product Chip Output (from Lumber Mills)</b>				
By Product Chip Output	(000 bdu)	1,682	6,617	8,298
By Product Chip Recovery Factor	(bdu/'000 m <sup>3</sup> )	138	135	136
Conversion Factor	(m <sup>3</sup> /bdu)	2.62	2.78	2.75
= Volume of Chips Produced	('000 m <sup>3</sup> )	4,406	18,394	22,800
As Per Cent of Log Input	(%)	36%	38%	37%
<b>Sawdust and Shavings - Estimated Volume</b>	('000 m <sup>3</sup> )	2,669	6,869	9,538
As Per Cent of Log Input	(%)	22%	14%	16%

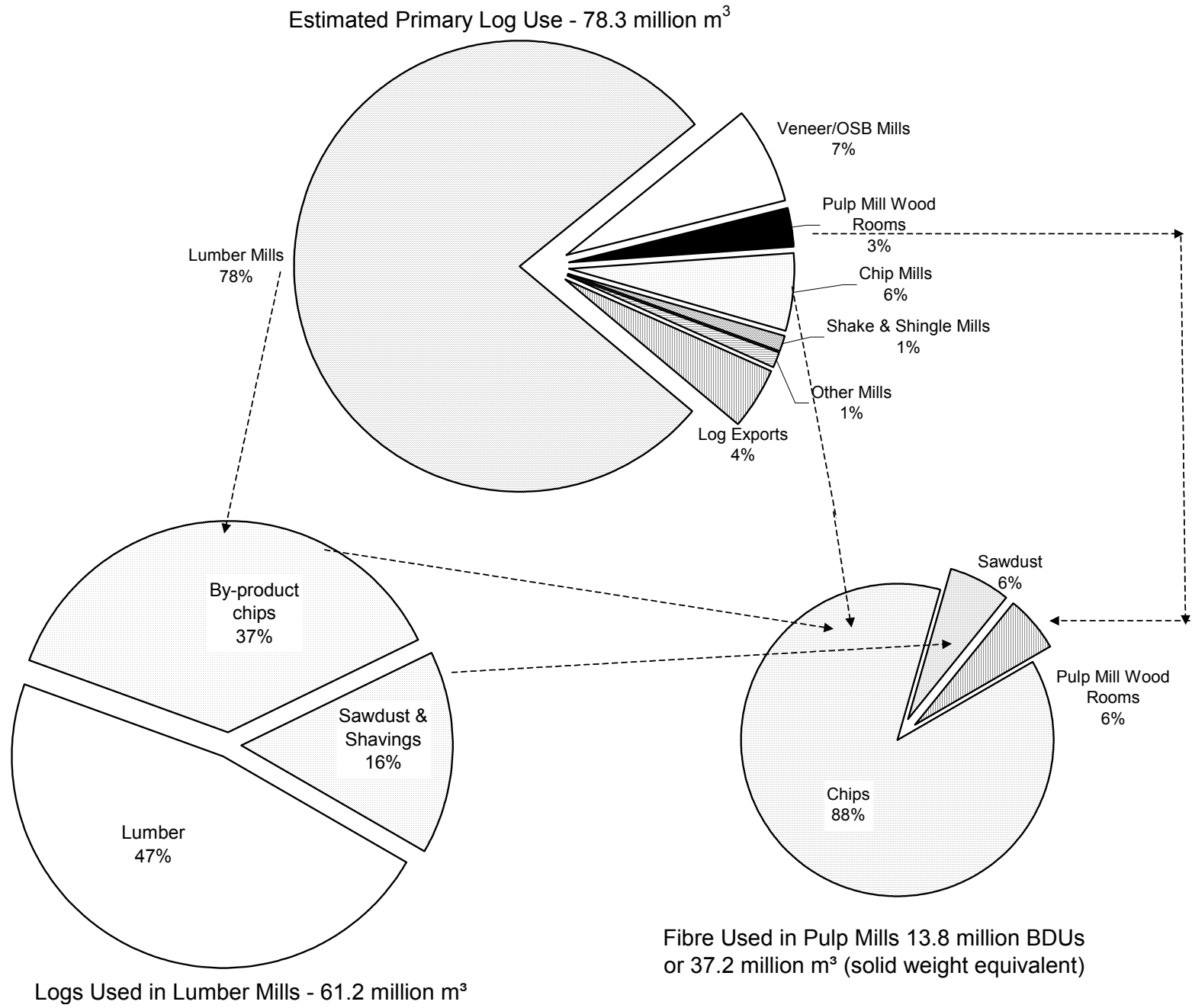


Sources: Survey data and Forintek Canada Corp., "Conversion Factors for the Forest Products Industry in Western Canada", Special Publication No. SP-24R, 1985, Table 21.

Notes:

\* This conversion factor (Forintek, page 32) is to convert lumber output in nominal board feet to cubic metres solid wood equivalent. mfbm = thousand board feet; m<sup>3</sup> = cubic metres; bdu = bone dry unit = 2400 pounds.

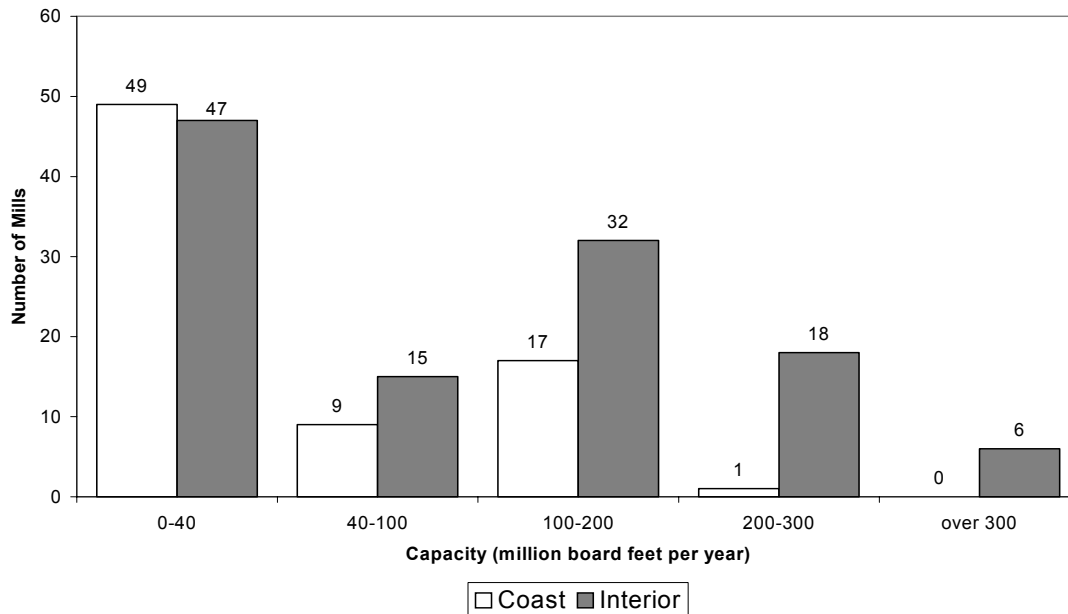
**Figure 3: Estimated British Columbia Log and Fibre Use - 2004**



## B. Time Series Data for Medium and Large Lumber Mills

Table 1 shows number of mills, lumber capacity, production, input, and estimated lumber recovery factors for medium and large sized (over 40 million board feet per year) sawmills in British Columbia from 1990 to 2004<sup>1</sup>. There were 98 of these sized mills operating in 2004, accounting for about 97% of lumber production<sup>2</sup>. Figure 4 shows the distribution of lumber mills in BC by mill size, for the Coast and Interior.

Figure 4: Distribution of British Columbia Lumber Mill Size - 2004



Although total sawmill capacity for these mills has remained relatively constant over the time period at about 15 billion board feet per year, Figures 5 and 6 show that as the number of mills has fallen over the last 15 years, the average capacity per mill has increased markedly, especially in the Interior.

Figure 7 shows that capacity utilization fluctuates year to year. In the Interior, capacity utilization is higher than on the Coast and shows an upward trend, especially in the last few years. On the Coast, capacity utilization dropped markedly from 1994 to 1998, but has been increasing in each year since 2001.

Figure 8 shows that the lumber recovery factor (the volume of lumber mills get from a cubic metre of log input) is increasing over time, again especially in the Interior. The lumber recovery factor for the Coast is lower partly because of species differences and the more diverse range of lumber products manufactured on the Coast as compared to the Interior.

<sup>1</sup> The times series data was developed from historical databases from the Ministry of Forests and Range annual mill survey and only covers those mills with annual capacity of 40 million board feet or more.

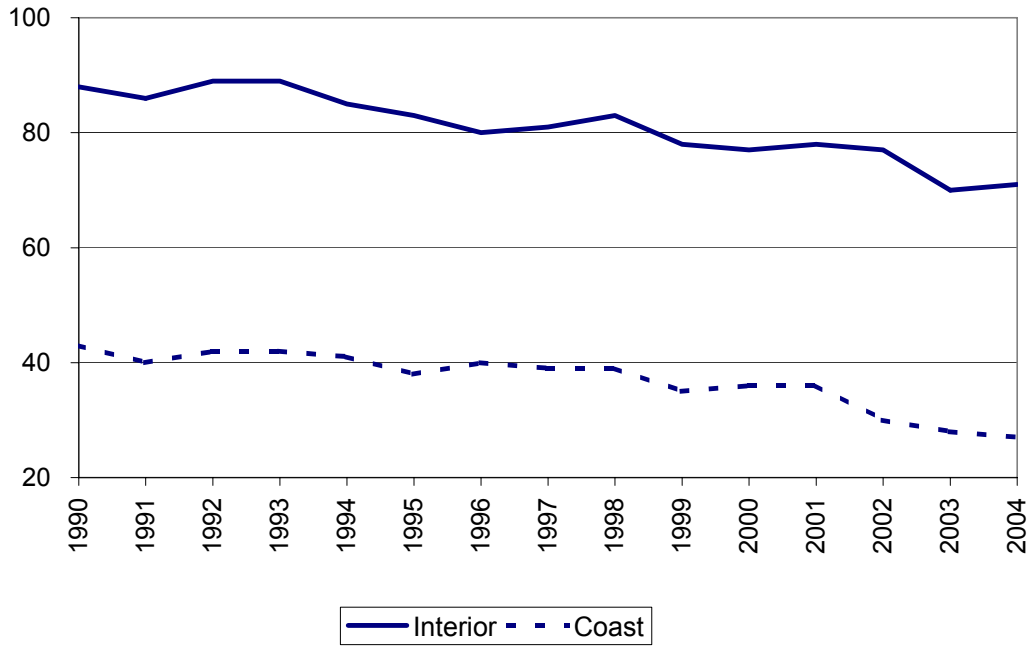
<sup>2</sup> The publication also includes a large number of small mills: 96 mills with capacity under 40 million board feet in 2004, of which about half had capacity of under 5 million board foot per year.

**Table 1: British Columbia Lumber Mill Summary Statistics for Medium and Large Sized Mills**

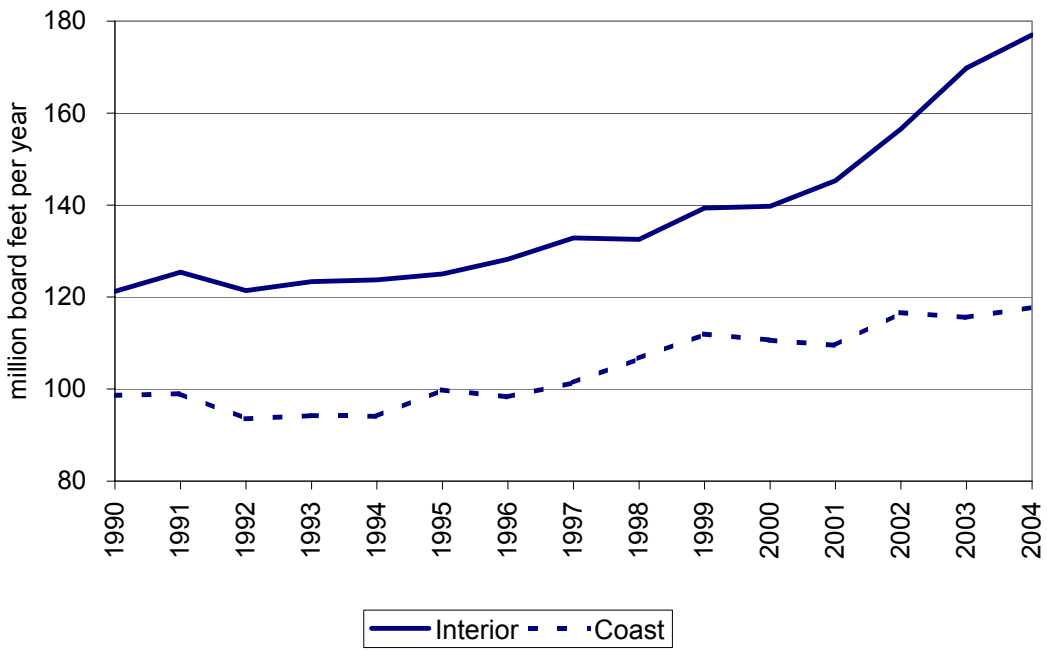
		1990...	1995...	2000	2001	2002	2003	2004	% change 1990-2004
<b>COAST</b>									
Number of Mills		43	38	36	36	30	28	27	-37%
Total Capacity	billion board feet per year	4.2	3.8	4.0	3.9	3.5	3.2	3.2	-25%
Total Output	billion board feet per year	3.8	3.3	3.1	2.6	2.4	2.3	2.6	-31%
Total Input	million cubic metres per year	17.1	15.0	13.8	11.6	10.7	10.1	11.2	-34%
Average Capacity	million board feet per mill per year	99	100	111	110	117	116	118	19%
Capacity Utilization	output divided by capacity	89%	88%	77%	65%	70%	72%	81%	-9%
Lumber Recovery Factor	'000 board feet per cubic metre	0.220	0.223	0.222	0.221	0.228	0.233	0.229	4%
<b>INTERIOR</b>									
Number of Mills		88	83	77	78	77	70	71	-19%
Total Capacity	billion board feet per year	10.7	10.4	10.8	11.3	12.1	11.9	12.6	18%
Total Output	billion board feet per year	10.0	10.0	10.5	10.3	11.8	11.9	13.4	34%
Total Input	million cubic metres per year	42.2	40.9	40.0	38.1	43.4	43.1	47.6	13%
Average Capacity	million board feet per mill per year	121	125	140	145	157	170	177	46%
Capacity Utilization	output divided by capacity	93%	96%	98%	90%	98%	100%	107%	14%
Lumber Recovery Factor	'000 board feet per cubic metre	0.236	0.245	0.263	0.269	0.273	0.275	0.281	19%
<b>PROVINCE</b>									
Number of Mills		131	121	113	114	107	98	98	-25%
Total Capacity	billion board feet per year	14.9	14.2	14.7	15.3	15.6	15.1	15.7	6%
Total Output	billion board feet per year	13.7	13.3	13.6	12.8	14.3	14.2	16.0	16%
Total Input	million cubic metres per year	59.2	55.8	53.8	49.7	54.0	53.1	58.9	-1%
Average Capacity	million board feet per mill per year	114	117	130	134	145	154	161	41%
Capacity Utilization	output divided by capacity	92%	94%	92%	84%	92%	94%	101%	10%
Lumber Recovery Factor	'000 board feet per cubic metre	0.232	0.239	0.253	0.258	0.264	0.267	0.271	17%

Medium and Large Sized Mills defined as lumber mills with estimated capacity over 40 million board feet per year.

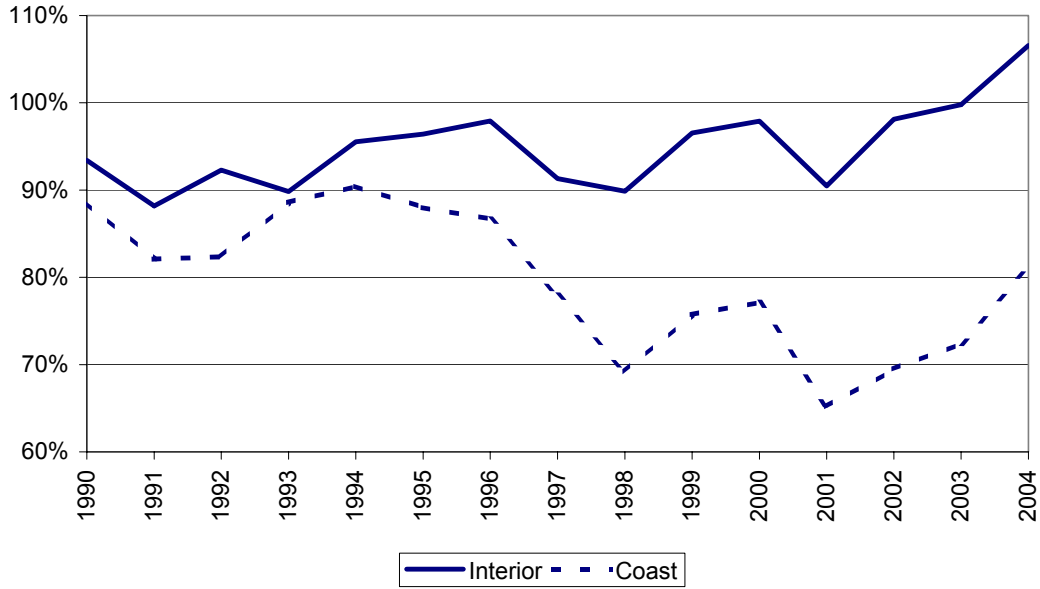
**Figure 5: Number of British Columbia Medium and Large Sized Lumber Mills**



**Figure 6: Average Size of British Columbia Medium and Large Sized Lumber Mills**

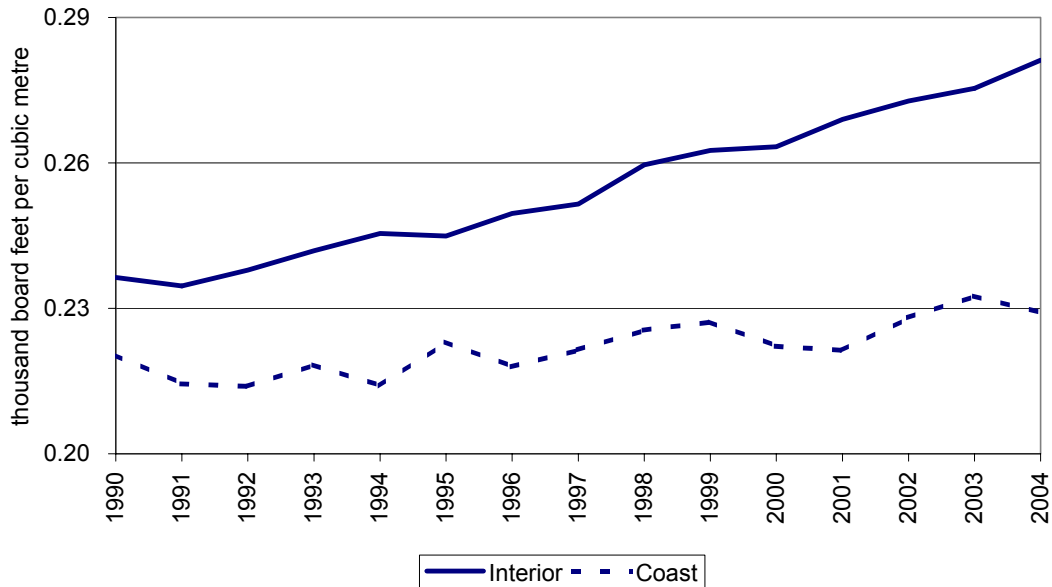


**Figure 7: Capacity Utilization for British Columbia  
Medium and Large Sized Lumber Mills**



Capacity estimated assuming 2, 8-hour shifts, 240 days per year.

**Figure 8: Lumber Recovery Factor for British Columbia  
Medium and Large Sized Lumber Mills**





## **C Major Acquisitions in British Columbia Forest Products Industry**

This section briefly describes the major mergers and acquisitions in 2004, and presents some historical data on consolidation in the BC lumber industry over the past 15 years.

### **2004 Acquisitions**

Four significant acquisitions occurred in the British Columbia forest products industry during 2004. The first three involve mergers, while the fourth refers to the restructuring and name change by Doman Industries. The 2005 acquisition of Weyerhaeuser's Canadian operations by Brascan is briefly described below, but is not reflected elsewhere in this publication.

- 1) Canfor/Slocan (April 2004)
- 2) Tolko/Riverside/Lignum (Spring, October 2004)
- 3) West Fraser/Weldwood (December 2004)
- 4) Western Forest Products/Brascan/Doman Industries (July 2004)
- 5) Brascan/Weyerhaeuser (May 2005)

All three of the major 2004 mergers were reviewed by both the BC and Federal governments to ensure that market competition is not compromised. The BC government is specifically concerned with tenure transfers or corporate changes in control that may unduly restrict competition in the markets for standing timber, logs, and chips. The federal Competition Bureau is interested in these markets, but also seeks to protect the consumer from any adverse effects related to monopoly power. As described below, in some cases the federal government, through the Competition Bureau, has required the merged company to sell one or more mills in a certain area.

#### **1) Canfor/Slocan**

On April 1, 2004, Canfor and Slocan announced that the combination of their businesses was complete. Prior to the merger, Slocan owned 9 sawmills, and an OSB mill. The combined company's lumber capacity in British Columbia is now in the order of 4 billion board feet, although this may change in 2005 as Canfor sells certain mills<sup>3</sup>.

As a condition of the federal Competition Bureau approving the Slocan acquisition, Canfor agreed to sell its Fort St James sawmill<sup>4</sup>. Pope and Talbot has a provisional agreement with Canfor to purchase the Fort St James mill, but the sale had not been finalized as of May 2005 and so is not reflected in the 2004 Mill List.

---

<sup>3</sup> Canfor sold two lumber mills in early 2005 (the Slocan sawmill to Springer Creek in March, 2005, and the Valemount sawmill to Northwest Specialty Lumber in May 2005); neither of these sales is reflected in the 2004 Mill List. Canfor has also sold its Fort St James lumber mill in 2005.

<sup>4</sup> From "Consent Agreement in relation to the Acquisition by Canfor Corporation of Slocan Forest Products Ltd.", Public version, March 31, 2004. From Competition Tribunal website: [www.ct-tc.gc.ca](http://www.ct-tc.gc.ca)

## **2) Tolko/Riverside/Lignum**

Tolko Industries Ltd. acquired Riverside Forest Products Limited in October 2004. Riverside acquired Lignum Ltd. in the spring of 2004. In 2003, Riverside operated five sawmills, three veneer and plywood mills and one veneer mill. In 2003, Lignum operated one very large sawmill.

As of May 2005, this acquisition is still under review by the federal Competition Bureau.

## **3) West Fraser/Weldwood**

On Dec 31, 2004, West Fraser acquired Weldwood of Canada Limited. This acquisition is also reflected in the 2004 Mill List. In 2003, Weldwood owned four sawmills (two under the name Babine), and two veneer and plywood mills.

As a condition of the federal Competition Bureau approving the Weldwood acquisition, West Fraser agreed to sell its 90% interest in the Babine sawmills located in Burns Lake and Decker Lake, BC and related timber harvesting rights. As of May 2005, these sales had not occurred.

## **4) Western Forest Products/Brascan/Doman Industries (July 2004)**

Doman Industries began a restructuring process in the spring of 2004 involving Brascan Financial Corporation. Beginning July 28, 2004, the successor company, Western Forest Products, began operating. In 2004, Western Forest Products operated 6 sawmills and 1 pulp mill (under the name Western Pulp Ltd. Partnership). Doman's Port Alice pulpmill was sold to Port Alice Specialty Pulp Inc. in 2004.

## **5) Brascan/Weyerhaeuser (May 2005)**

On May 30, 2005 Brascan Corporation announced that it had completed the acquisition of Weyerhaeuser's British Columbia coastal business. In 2004 Weyerhaeuser operated 6 lumber mills in the BC Coast region. Brascan formed a new company, Cascadia Forest Products Ltd., to own and operate the sawmills. This change will be reflected in the 2005 Mill list publication.

### **D. Previous significant mergers**

By reviewing the companies reported in the Mill List over time, other years of significant mergers were identified. In particular, a number of significant purchases occurred in 1997-99, with the most significant being the 1999 purchases of MacMillan Bloedel (6 lumber mills in 1998) by Weyerhaeuser, and of Northwood (6 lumber mills in 1998) by Canfor.

Table 2 shows the names and estimated capacity shares of the top 10 BC lumber companies in 1990, 1995, 2000 and 2004<sup>5</sup>. Figures 9 and 10 show the capacity share of the top lumber companies over time.

**Table 2: Top BC Lumber Companies in Selected Years**

**1990 - Top 10 BC Lumber Companies**

Company	Estimated annual capacity	Percent of total capacity
Fletcher Challenge	1.5	10%
Canfor	1.4	9%
Northwood	1.1	7%
West Fraser	1.0	6%
MacMillan Bloedel	0.8	5%
Weldwood	0.8	5%
Westar	0.8	5%
Doman	0.7	5%
Slocan	0.6	4%
Interfor	0.6	4%

**1995 - Top 10 BC Lumber Companies**

Company	Estimated annual capacity	Percent of total capacity
Canfor	1.2	8%
Slocan	1.2	8%
West Fraser	1.1	7%
Interfor	1.0	7%
Northwood	1.0	7%
Doman	0.8	5%
Weyerhaeuser	0.6	4%
Fletcher Challenge	0.6	4%
Anderson-Stewart	0.6	4%
MacMillan Bloedel	0.6	4%

**2000 - Top 10 BC Lumber Companies**

Company	Estimated annual capacity	Percent of total capacity
Canfor	2.3	15%
Slocan	1.3	8%
West Fraser	1.2	8%
Weyerhaeuser	1.1	7%
Doman	1.1	7%
Interfor	0.9	5%
Weldwood	0.6	4%
Anderson-Stewart	0.6	4%
Riverside	0.5	3%
Pope and Talbot	0.5	3%

**2004 - Top 10 BC Lumber Companies**

Company	Estimated annual capacity	Percent of total capacity
Canfor	4.0	24%
West Fraser	2.2	13%
Tolko	1.4	8%
Weyerhaeuser	1.0	6%
Interfor	0.9	6%
Western Forest Products	0.9	5%
Anderson-Stewart	0.7	4%
Pope and Talbot	0.5	3%
Dunkley	0.5	3%
Abitibi	0.4	3%

Estimated annual capacity in billion board feet.

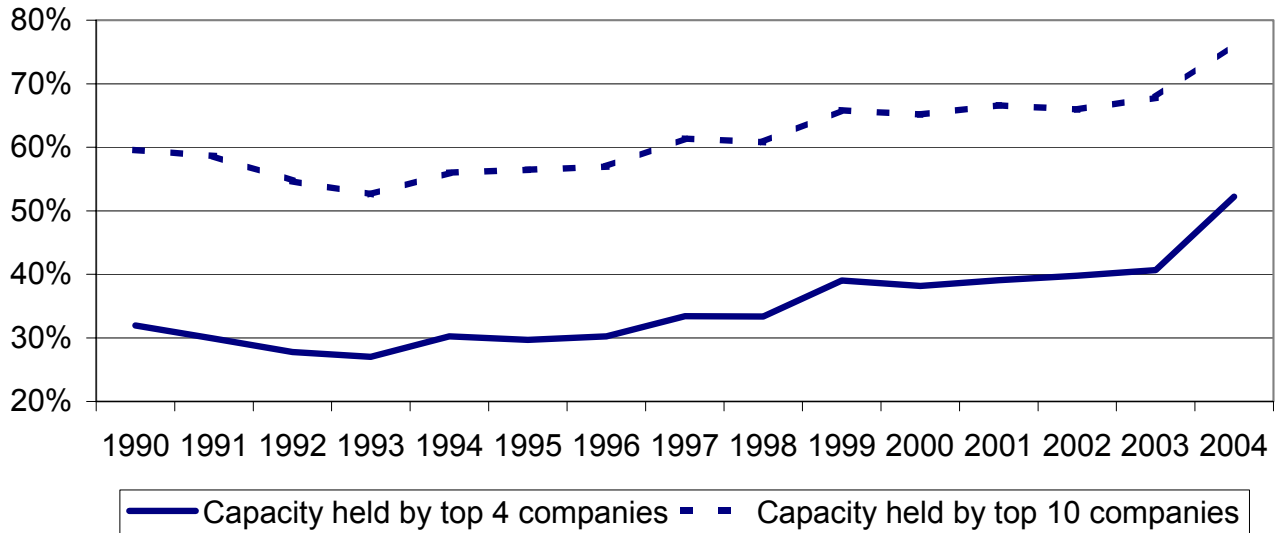
Note: Mill divestments in 2005 are not reflected.

## E. Increased efficiency

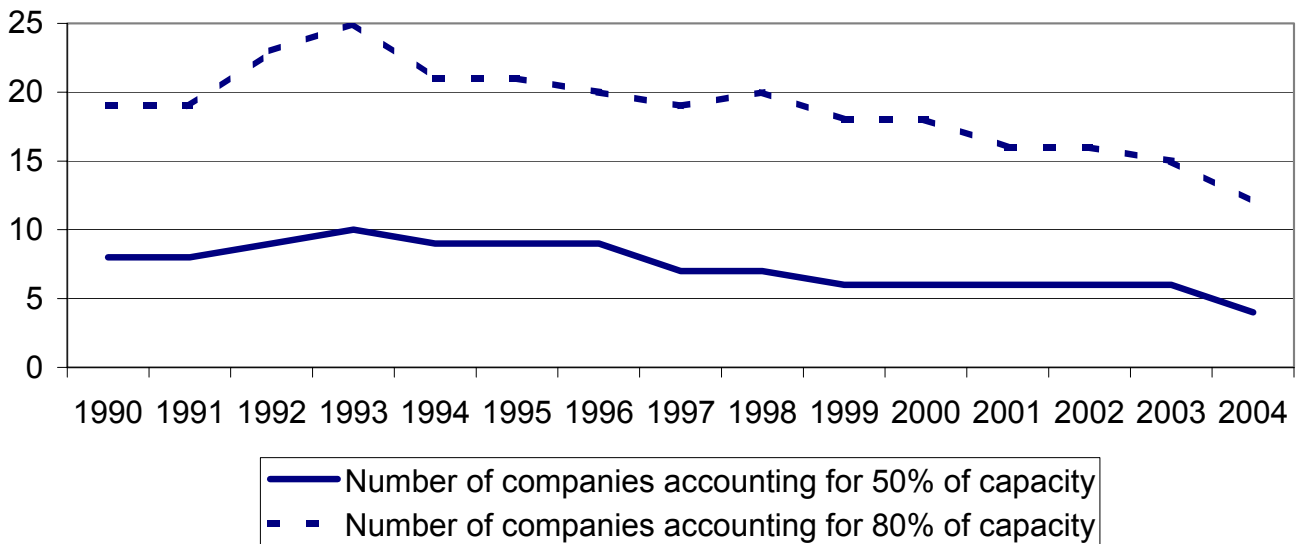
As with many industries, BC's primary timber processing industry has moved toward fewer, larger mills and fewer, larger companies over the years. This shift has led to increased efficiencies, both at the technical level, an example of which is the dramatic increase in the lumber recovery factor shown in Figure 8 above, as well as at the economic level with unit costs of production falling.

<sup>5</sup> To make comparisons across time, the very smallest sawmills (under 3 million board feet capacity per year) have not been used in the analysis.

**Figure 9: Percent of Total British Columbia Sawmilling Capacity held by Largest Companies**



**Figure 10: Number of British Columbia Sawmilling Companies Accounting for 50% and 80% of Capacity**



The survey used as the basis for this publication does not collect information on costs of production. Table 3 shows an example developed by PricewaterhouseCoopers to show how costs fall as mill size increases.

**Table 3: PricewaterhouseCoopers Example of the Relationship between Mill Size and Manufacturing Costs.**

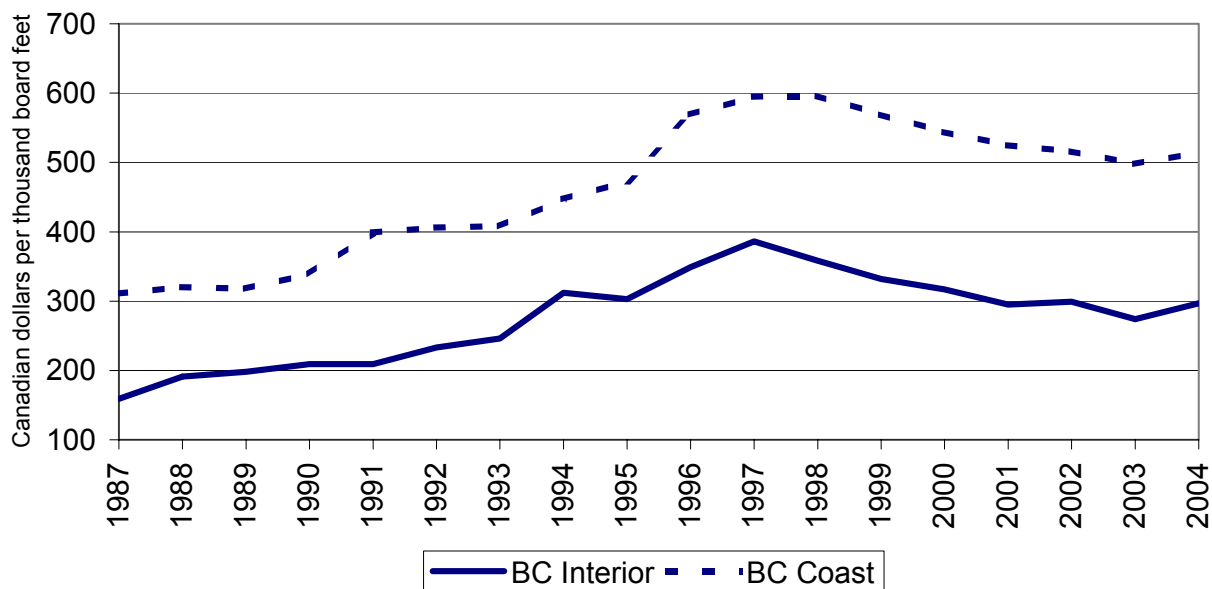
	Size of Mill:			
	Small	Medium	Large	Supersize
Direct Manufacturing Costs	87	73	62	56
Indirect Manufacturing Costs	13	13	11	8
	=====	=====	=====	=====
Total Manufacturing Costs	100	86	73	64

Source: Presentation by Craig Campbell at PricewaterhouseCoopers Global Forest and Paper Industry Conference, June 1, 2005.

Note: 100 = average total manufacturing cost for small mills

RISI, a provider of independent economic analysis for the international forest products industry, collects information on lumber milling costs. Figure 11 shows that RISI estimates BC lumber mill average variable cost increased from the late 1980s until the mid 1990s, but declined fairly steadily from 1997 to 2004.

**Figure 11: RISI data for BC Lumber Mills Average Variable Costs**



## **Related References**

Natural Resources Canada, "The Atlas of Canada", available on the Internet at:  
<http://atlas.gc.ca/site/english/maps/environment/forest/useforest/sawmills>

Industry Canada, Strategis website,  
[strategis.ic.gc.ca/sc\\_ecnmy/sio/homepage.html](http://strategis.ic.gc.ca/sc_ecnmy/sio/homepage.html)

PricewaterhouseCoopers Global Forest and Paper Industry Conference, June 1, 2005.

Resource Information Systems Inc. (RISI), "North American Lumber Forecast"  
[www.resourceinfo.com](http://www.resourceinfo.com)

Spelter, Henry and Mathew Alderman, Profile 2003: Softwood Sawmills in the United States and Canada, United States Department of Agriculture, Forest Service, Forest Products Laboratory, Research Paper FPL-RP-608, April 2003.

## **CHIP MILLS**

(Listed Alphabetically)

Only mills that produce wood chips as a primary product are listed in this section.

Notes:

1. Measurement units are in thousands of bone dry units (000 BDUs).
2. Estimated annual capacity is based on a standardized operation of 240 days per year, two 8 hour shifts per day. Actual mill operations may vary from this schedule.

Mill Number	Company	Location of Mill	Forest Region	Forest District	Estimated Annual Capacity (000s of BDUs)
17	A Byrne Forest Products	Myrtle Point	Coast	Sunshine Coast	10
243	Cache Creek Fibre Supply Ltd.	Cache Creek	Southern Interior	Kamloops	288
446	Campbell River Fibre Ltd.	Campbell River	Coast	Campbell River	113
166	Canadian Forest Products Ltd.	Prince George	Northern Interior	Prince George	132
193	Canadian Forest Products Ltd.	Houston	Northern Interior	Nadina	62
345	DCT Chambers Trucking Ltd.	Deerholm	Coast	South Island	759
356	East Fraser Fibre Co Ltd.	Mackenzie	Northern Interior	Mackenzie	240
538	Fraser Pulp Chips Ltd.	Surrey	Coast	Chilliwack	20
409	Howe Sound Pulp & Paper Ltd.	Vancouver	Coast	Chilliwack	300
18	Terminal Forest Products Ltd.	Langdale Dryland Sort	Coast	Sunshine Coast	90
68	Tolko Industries Ltd.	Armstrong	Southern Interior	Okanagan Shuswap	46
107	Tolko Industries Ltd.	Williams Lake	Southern Interior	Central Cariboo	56
394	Tolko Industries Ltd.	Heffley Creek	Southern Interior	Kamloops	36
183	West Fraser Mills Ltd.	Terrace	Northern Interior	Kalum	192
113	West Fraser Mills Ltd.	Quesnel	Southern Interior	Quesnel	72
405	Western Forest Products Ltd.	Nanaimo	Coast	South Island	251



## **LOG HOME MILLS**

(Listed Alphabetically)

Mills that process logs to manufacture log homes are listed in this section.

A throughput capacity measurement is not as meaningful for log home mills as it is for other types of primary timber processing mills. Therefore, this section does not include estimated annual capacity.

Mill Number	Company	Location of Mill	Forest Region	Forest District
37	Arcadia Log Homes	Surrey	Coast	Chilliwack
190	Artisan Custom Log Construction Ltd.	Ruskin	Coast	Chilliwack
38	Big Foot Manufacturing Inc.	Tappen	Southern Interior	Okanagan Shuswap
39	Big Rock Homes	Clearbrook	Coast	Chilliwack
458	Brian Moore Log Homes Ltd.	Abbotsford	Coast	Chilliwack
697	Caliga Log Homes Ltd.	93 Mile	Southern Interior	100 Mile House
694	Canada's Log People Ltd.	100 Mile House	Southern Interior	100 Mile House
179	Canadian North Log Homes Inc.	Abbotsford	Coast	Chilliwack
260	Canadian Walden Log Homes Ltd.	Sardis	Coast	Chilliwack
208	Canalog Wood Industries Ltd	Cranbrook	Southern Interior	Rocky Mountain
522	Chinook Log Homes Ltd.	Bear Flats	Northern Interior	Peace
212	Custom Log Homes Ltd.	Salmon Arm	Southern Interior	Okanagan Shuswap
733	Dave Ohrling Log Homes	Lone Butte	Southern Interior	100 Mile House
43	Ducharme Logworks Ltd.	Kamloops	Southern Interior	Kamloops
700	Durfeld Log Construction Ltd.	Whistler	Coast	Squamish
275	Granberg Construction Ltd.	Kamloops	Southern Interior	Kamloops
46	Hamill Creek Timberwrights	Meadow Creek	Southern Interior	Kootenay Lake
216	Ideal Export Log Homes Ltd.	Salmon Arm	Southern Interior	Okanagan Shuswap
524	Japan - Canadian Log Ark Ltd.	Maple Ridge	Coast	Chilliwack
218	Maurer Construction Ltd.	Penticton	Southern Interior	Okanagan Shuswap
391	Morgan Log Homes Ltd.	Hope	Coast	Chilliwack
49	Neville Log Homes Corporation	Kamloops	Southern Interior	Kamloops
230	Nicola Log Works Ltd.	Merritt	Southern Interior	Cascades
291	North American Log Crafters Ltd.	Celista	Southern Interior	Okanagan Shuswap
379	Old Yale Log Homes Ltd.	Sardis	Coast	Chilliwack

Mill Number	Company	Location of Mill	Forest Region	Forest District
52	Original Log Homes Ltd.	100 Mile House	Southern Interior	100 Mile House
692	Pacific Log Homes Ltd.	Lone Butte	Southern Interior	100 Mile House
276	Patrick Log Homes Ltd.	Kamloops	Southern Interior	Kamloops
474	Pioneer Log Homes Ltd.	Williams Lake	Southern Interior	Central Cariboo
223	Radomske Log Homes Ltd	Kelowna	Southern Interior	Okanagan Shuswap
225	Rasmussen Log Homes Ltd.	Okanagan Falls	Southern Interior	Okanagan Shuswap
473	Reko Log Homes Ltd.	Quesnel	Southern Interior	Quesnel
57	Roundwood Log Homes Ltd.	Prince George	Northern Interior	Prince George
693	Sitka Log Homes Ltd.	100 Mile House	Southern Interior	100 Mile House
509	Ski Lumber Ltd.	Valemount	Southern Interior	Headwaters
58	Sperlich Log Construction Inc	Enderby	Southern Interior	Okanagan Shuswap
695	Superior Log Homes Ltd.	93 Mile	Southern Interior	100 Mile House
423	Surelog Homes Ltd.	Tappen	Southern Interior	Okanagan Shuswap
602	T.L. Timber Ltd.	Cawston	Southern Interior	Okanagan Shuswap
59	Tall Timber Log Builders	Abbotsford	Coast	Chilliwack
60	Top Notch Log Construction	Victoria	Coast	South Island
245	Traditional Log Homes Ltd.	Salmon Arm	Southern Interior	Okanagan Shuswap
63	West Coast Log Homes	Gibsons	Coast	Sunshine Coast
267	White Valley Log Homes Ltd.	Cherryville	Southern Interior	Okanagan Shuswap
698	Wildwood Forest Products Ltd.	Williams Lake	Southern Interior	Central Cariboo



## **LUMBER MILLS**

(Listed Alphabetically)

Mills producing lumber are reported in the following 2 sections:

- a) Mills that have estimated annual capacity of more than 10 million board feet of lumber.
- b) Mills that have estimated annual capacity of less than 10 million board feet of lumber.

Notes:

- 1. Measurement units are in millions of board feet.
- 2. Estimated annual capacity is based on a standardized operation of 240 days per year, two 8 hour shifts per day. Actual mill operations may vary from this schedule.

## THE FOLLOWING MILLS HAD CAPACITY OF MORE THAN 10 MILLION BOARD FEET OF LUMBER IN 2004

Mill Number	Company	Location of Mill	Forest Region	Forest District	Estimated Annual Capacity (millions of board feet)
9	A J Forest Products Ltd.	Brackendale	Coast	Squamish	12
5	Abfam Enterprises Ltd.	Port Clements	Coast	Queen Charlotte	14
128	Abitibi-Consolidated Company of Canada	Mackenzie	Northern Interior	Mackenzie	249
129	Abitibi-Consolidated Company of Canada	Mackenzie	Northern Interior	Mackenzie	201
8	Andersen Pacific Forest Products Ltd	Ruskin Maple Ridge	Coast	Chilliwack	17
137	Apollo Forest Products Ltd.	Fort St James	Northern Interior	Fort St James	130
207	Ardeu Wood Products Ltd.	Merritt	Southern Interior	Cascades	61
498	Aspen Planers Ltd.	Merritt	Southern Interior	Cascades	77
252	C & C Wood Products Ltd.	Quesnel	Southern Interior	Quesnel	25
130	Canadian Forest Products Ltd.	Mackenzie	Northern Interior	Mackenzie	480
193	Canadian Forest Products Ltd.	Houston	Northern Interior	Nadina	442
140	Canadian Forest Products Ltd.	Engen	Northern Interior	Vanderhoof	347
153	Canadian Forest Products Ltd.	Prince George	Northern Interior	Prince George	344
110	Canadian Forest Products Ltd.	Quesnel	Southern Interior	Quesnel	264
133	Canadian Forest Products Ltd.	Fort St James	Northern Interior	Fort St James	240
127	Canadian Forest Products Ltd.	Chetwynd	Northern Interior	Peace	227
166	Canadian Forest Products Ltd.	Prince George	Northern Interior	Prince George	225
160	Canadian Forest Products Ltd.	Bear Lake	Northern Interior	Prince George	192
122	Canadian Forest Products Ltd.	Fort St John	Northern Interior	Peace	182
135	Canadian Forest Products Ltd.	Isle Pierre	Northern Interior	Prince George	175
64	Canadian Forest Products Ltd.	Vavenby	Southern Interior	Headwaters	173
90	Canadian Forest Products Ltd.	Radium Hot Sprgs	Southern Interior	Rocky Mountain	168
97	Canadian Forest Products Ltd.	Prince George	Northern Interior	Prince George	140
55	Canadian Forest Products Ltd.	Slocan	Southern Interior	Arrow/Boundary	134
173	Canadian Forest Products Ltd.	Valemount	Southern Interior	Headwaters	118

## THE FOLLOWING MILLS HAD CAPACITY OF MORE THAN 10 MILLION BOARD FEET OF LUMBER IN 2004

Mill Number	Company	Location of Mill	Forest Region	Forest District	Estimated Annual Capacity (millions of board feet)
121	Canadian Forest Products Ltd.	Fort Nelson	Northern Interior	Fort Nelson	101
111	Canadian Forest Products Ltd.	Quesnel	Southern Interior	Quesnel	86
150	Carrier Lumber Ltd.	Prince George	Northern Interior	Prince George	192
737	Cheslatta Forest Products Ltd.	Ootsa Lake	Northern Interior	Nadina	96
377	Coulson Manufacturing Ltd	Port Alberni	Coast	South Island	48
326	Delta Cedar Products Ltd.	Delta	Coast	Chilliwack	48
741	Dove Creek Timber Corp.	Courtenay	Coast	Campbell River	11
45	Downie Timber Ltd.	Revelstoke	Southern Interior	Columbia	87
158	Dunkley Lumber Ltd.	Strathnaver	Northern Interior	Prince George	480
301	Errington Cedar Products Ltd.	Errington	Coast	South Island	18
12	Federated Co-op Ltd.	Canoe	Southern Interior	Okanagan Shuswap	144
714	Franklin Forest Products Ltd.	Port Alberni	Coast	South Island	24
538	Fraser Pulp Chips Ltd.	Surrey	Coast	Chilliwack	25
86	Galloway Lumber Co. Ltd.	Galloway	Southern Interior	Rocky Mountain	60
66	Gilbert Smith Forest Products Ltd.	Barriere	Southern Interior	Kamloops	30
537	Goldwood Industries Ltd.	Richmond	Coast	Chilliwack	48
14	Gorman Bros Lumber Ltd.	Westbank	Southern Interior	Okanagan Shuswap	120
172	Hauer Bros. Lumber Ltd.	Tete Jaune Cache	Southern Interior	Headwaters	14
530	Houston Forest Products Co.	Houston	Northern Interior	Nadina	319
70	International Forest Products Ltd.	Adams Lake	Southern Interior	Kamloops	211
361	International Forest Products Ltd.	Surrey	Coast	Chilliwack	163
297	International Forest Products Ltd.	Hammond	Coast	Chilliwack	158
283	International Forest Products Ltd.	Delta	Coast	Chilliwack	144
334	International Forest Products Ltd.	Courtenay	Coast	Campbell River	134
461	International Forest Products Ltd.	New Westminster	Coast	Chilliwack	106

## THE FOLLOWING MILLS HAD CAPACITY OF MORE THAN 10 MILLION BOARD FEET OF LUMBER IN 2004

Mill Number	Company	Location of Mill	Forest Region	Forest District	Estimated Annual Capacity (millions of board feet)
88	J H Huscroft Ltd.	Erickson	Southern Interior	Kootenay Lake	36
47	Joe Kozek Sawmills Ltd.	Revelstoke	Southern Interior	Columbia	14
50	Kalesnikoff Lumber Co. Ltd.	Thrums	Southern Interior	Arrow/Boundary	62
558	Kispiox Forest Productst Ltd.	South Hazelton	Northern Interior	Skeena Stikine	48
184	Kitwanga Mills Ltd.	Kitwanga	Northern Interior	Skeena Stikine	55
144	L & M Lumber Ltd.	Vanderhoof	Northern Interior	Vanderhoof	168
149	Lakeland Mills Ltd.	Prince George	Northern Interior	Prince George	139
597	Lakeside Timber Ltd.	Tappen	Southern Interior	Okanagan Shuswap	14
712	Long Hoh Enterprises Canada Ltd	Qualicum Beach	Coast	South Island	31
11	LP Engineered Wood Products Ltd.	Malakwa	Southern Interior	Okanagan Shuswap	38
116	Lytton Lumber Ltd.	Lytton	Southern Interior	Cascades	58
169	McBride Forest Ind. Ltd.	McBride	Southern Interior	Headwaters	22
603	Meadow Creek Cedar Ltd.	Cooper Creek	Southern Interior	Kootenay Lake	53
336	Mill & Timber Products Ltd.	Port Moody	Coast	Chilliwack	75
403	Mill & Timber Products Ltd.	Surrey	Coast	Chilliwack	62
22	Noble Custom Cut Ltd.	Whonnock	Coast	Chilliwack	29
618	North Enderby Timber Ltd.	Enderby	Southern Interior	Okanagan Shuswap	34
713	Paragon Ventures Ltd.	Lumby	Southern Interior	Okanagan Shuswap	28
665	Paragon Ventures Ltd.	Grindrod	Southern Interior	Okanagan Shuswap	12
732	PG Sort Yard	Prince George	Northern Interior	Prince George	48
62	Pope & Talbot Ltd.	Castlegar	Southern Interior	Arrow/Boundary	230
31	Pope & Talbot Ltd.	Midway	Southern Interior	Arrow/Boundary	173
30	Pope & Talbot Ltd.	Grand Forks	Southern Interior	Arrow/Boundary	130
626	Porcupine Wood Products Ltd.	Salmo	Southern Interior	Kootenay Lake	31
454	S & R Sawmills Ltd.	Surrey	Coast	Chilliwack	192



## THE FOLLOWING MILLS HAD CAPACITY OF MORE THAN 10 MILLION BOARD FEET OF LUMBER IN 2004

Mill Number	Company	Location of Mill	Forest Region	Forest District	Estimated Annual Capacity (millions of board feet)
87	Seel Forest Products Ltd.	Edgewater	Southern Interior	Rocky Mountain	36
740	Sigurdson Bros. Logging Company	Williams Lake	Southern Interior	Central Cariboo	72
539	Stag Timber Ltd.	Surrey	Coast	Chilliwack	62
136	Stuart Lake Lumber Co. Ltd.	Fort St James	Northern Interior	Fort St James	105
602	T.L. Timber Ltd.	Cawston	Southern Interior	Okanagan Shuswap	14
82	Tembec Industries Ltd.	Elko	Southern Interior	Rocky Mountain	197
79	Tembec Industries Ltd.	Canal Flats	Southern Interior	Rocky Mountain	173
396	Terminal Forest Products Ltd.	Vancouver	Coast	Chilliwack	204
540	Terminal Forest Products Ltd.	Richmond	Coast	Chilliwack	144
330	TimberWest Forest Ltd.	Campbell River	Coast	Campbell River	118
20	Tolko Industries Ltd.	Lavington	Southern Interior	Okanagan Shuswap	140
98	Tolko Industries Ltd.	Quesnel	Southern Interior	Quesnel	130
25	Tolko Industries Ltd.	Merritt	Southern Interior	Cascades	113
101	Tolko Industries Ltd.	Williams Lake	Southern Interior	Central Cariboo	293
103	Tolko Industries Ltd.	Williams Lake	Southern Interior	Central Cariboo	250
68	Tolko Industries Ltd.	Armstrong	Southern Interior	Okanagan Shuswap	202
67	Tolko Industries Ltd.	Kelowna	Southern Interior	Okanagan Shuswap	128
107	Tolko Industries Ltd.	Williams Lake	Southern Interior	Central Cariboo	103
35	Tolko Industries Ltd.	Lumby	Southern Interior	Okanagan Shuswap	14
453	Twin River Cedar Products Ltd.	Ruskin	Coast	Chilliwack	36
639	West Chilcotin Forest Product Ltd.	Anahim Lake	Southern Interior	Chilcotin	74
95	West Fraser Mills Ltd.	100 Mile House	Southern Interior	100 Mile House	237
181	West Fraser Mills Ltd.	Burns Lake	Northern Interior	Nadina	73
113	West Fraser Mills Ltd.	Quesnel	Southern Interior	Quesnel	264

## THE FOLLOWING MILLS HAD CAPACITY OF MORE THAN 10 MILLION BOARD FEET OF LUMBER IN 2004

Mill Number	Company	Location of Mill	Forest Region	Forest District	Estimated Annual Capacity (millions of board feet)
191	West Fraser Mills Ltd.	Smithers	Northern Interior	Skeena Stikine	240
213	West Fraser Mills Ltd.	Burns Lake	Northern Interior	Nadina	260
214	West Fraser Mills Ltd.	Clinton	Southern Interior	100 Mile House	192
532	West Fraser Mills Ltd.	LeJac	Northern Interior	Vanderhoof	240
552	West Fraser Mills Ltd.	Chetwynd	Northern Interior	Peace	240
183	West Fraser Mills Ltd.	Terrace	Northern Interior	Kalum	168
114	West Fraser Mills Ltd.	Williams Lake	Southern Interior	Central Cariboo	153
526	West Fraser Mills Ltd.	Quesnel	Southern Interior	Quesnel	149
436	Western Forest Products Ltd.	Vancouver	Coast	Chilliwack	168
546	Western Forest Products Ltd.	Duke Point	Coast	South Island	158
320	Western Forest Products Ltd.	Cowichan Bay	Coast	South Island	156
531	Western Forest Products Ltd.	Nanaimo	Coast	South Island	144
376	Western Forest Products Ltd.	Ladysmith	Coast	South Island	132
442	Western Forest Products Ltd.	Ladysmith	Coast	South Island	125
29	Weyerhaeuser Company Ltd.	Princeton	Southern Interior	Cascades	162
27	Weyerhaeuser Company Ltd.	Okanagan Falls	Southern Interior	Okanagan Shuswap	159
74	Weyerhaeuser Company Ltd.	Mission Flats	Southern Interior	Kamloops	128
389	Weyerhaeuser Company Ltd.	New Westminster	Coast	Chilliwack	146
528	Weyerhaeuser Company Ltd.	Port Alberni	Coast	South Island	134
488	Weyerhaeuser Company Ltd.	Nanaimo	Coast	South Island	125
393	Weyerhaeuser Company Ltd.	Chemainus	Coast	South Island	74
392	Weyerhaeuser Company Ltd.	Port Alberni	Coast	South Island	55
298	Weyerhaeuser Company Ltd.	Delta	Coast	Chilliwack	55
672	Winthro Contracting Ltd	Prince George	Northern Interior	Prince George	29
162	Winton Global	Bear Lake	Northern Interior	Prince George	298
93	Wynndel Box & Lumber Co. Ltd.	Wynndel	Southern Interior	Kootenay Lake	31

## THE FOLLOWING MILLS HAD CAPACITY OF LESS THAN 10 MILLION BOARD FEET OF LUMBER IN 2004

Mill Number	Company	Location of Mill	Forest Region	Forest District	Estimated Annual Capacity (millions of board feet)
7	Adams Lake Development Corporation	Squilax	Southern Interior	Kamloops	5
19	Albion Alder and Maple Co.	Maple Ridge	Coast	Chilliwack	2
10	BC Custom Timber Products Ltd.	Vanderhoof	Northern Interior	Vanderhoof	7
643	Bear Lumber Ltd.	Cranbrook	Southern Interior	Rocky Mountain	5
445	Beaver Forest Products Ltd	Campbell River	Coast	Campbell River	2
476	Birch Island Lumber Co. Ltd.	Clearwater	Southern Interior	Headwaters	1
444	C.V. Cedar Sales Ltd	Courtenay	Coast	Campbell River	0
302	Camano Lumber Sales	Maple Ridge	Coast	Chilliwack	2
16	Cascades West Forest Products Inc.	Hatzic	Coast	Chilliwack	5
738	Chalwood Forest Products LTD.	Port Alberni	Coast	South Island	9
452	Chimney Creek Lumber Co Ltd.	Williams Lake	Southern Interior	Central Cariboo	2
742	Corwood Timber Products Ltd.	Houston	Northern Interior	Nadina	8
684	Corwood Timber Products Ltd.	McBride	Southern Interior	Headwaters	1
73	Dale Arden Log Hauling Ltd.	Sooke	Coast	South Island	2
719	Dale Edwards	Ucluelet	Coast	South Island	0
26	Edge Grain Cedar	Maple Ridge	Coast	Chilliwack	1
717	Edgegrain	Cambell River	Coast	North Island - Central Coast	1
734	Enid Lake Logging Ltd.	Invermere	Southern Interior	Rocky Mountain	2
564	Fu Lin Sawmills Inc.	Cumberland	Coast	Campbell River	1
319	Fu So Enterprises Ltd.	Surrey	Coast	Chilliwack	10
679	G. W. Milling Ltd.	Malcolm Island	Coast	North Island - Central Coast	1
32	Gibbs Custom Sawmill Ltd.	McBride	Southern Interior	Headwaters	1
567	Green Forest Products Ltd.	Merville	Coast	Campbell River	1
735	Greg Williams	Sointula	Coast	North Island - Central Coast	1
730	Hart Creek Forest Products	Courtenay	Coast	Campbell River	1

## THE FOLLOWING MILLS HAD CAPACITY OF LESS THAN 10 MILLION BOARD FEET OF LUMBER IN 2004

Mill Number	Company	Location of Mill	Forest Region	Forest District	Estimated Annual Capacity (millions of board feet)
705	Heartwood Portable Sawmill	Cumberland	Coast	Campbell River	0
518	Herridge Trucking and Sawmilling Ltd	Nakusp	Southern Interior	Arrow/Boundary	7
286	Hilmoe Forest Products Ltd.	Rock Creek	Southern Interior	Arrow/Boundary	10
708	Island Pacific Wood Products	Tahsis	Coast	Campbell River	3
3	J.I.L. Wood Products Ltd	Kamloops	Southern Interior	Kamloops	7
512	Jemico Enterprises Ltd.	Chemainus	Coast	South Island	6
743	John Salo	Sointula	Coast	North Island - Central Coast	0
247	Jones Ties and Poles (1978) Ltd.	Rossland	Southern Interior	Arrow/Boundary	7
281	Karl Beattie Cont Ltd.	Revelstoke	Southern Interior	Columbia	5
36	L. Russo Sawmills Ltd.	Kelowna	Southern Interior	Okanagan Shuswap	2
255	Larry Buff Sawmills Ltd.	Westwold	Southern Interior	Okanagan Shuswap	4
702	Linde Bros Lumber Ltd.	Williams Lake	Southern Interior	Central Cariboo	5
399	Lois Lumber Ltd.	Lang Bay	Coast	Sunshine Coast	7
463	Lukwa Mills Ltd.	Port Hardy	Coast	North Island - Central Coast	3
542	Marsh Bros Lumber and Supply Ltd.	McBride	Southern Interior	Headwaters	7
197	McDonald Ranch & Lumber Ltd.	Grasmere	Southern Interior	Rocky Mountain	4
194	Mike Gogo Cedar Products	Nanaimo	Coast	South Island	3
353	Mill & Timber Products Ltd.	Port Hardy	Coast	North Island - Central Coast	1
715	Milrod Ent	100 Mile House	Southern Interior	100 Mile House	4
662	Munson Equipment Ltd.	Chase	Southern Interior	Kamloops	2
408	Nagaard Sawmills Ltd.	Port Alberni	Coast	South Island	5
347	New Dogwood Mill Ltd.	Cowichan Lake	Coast	South Island	2
199	North Star Planing Co. Ltd.	Athalmer	Southern Interior	Rocky Mountain	7
482	Notch Hill Forest Products Ltd.	Sorrento	Southern Interior	Okanagan Shuswap	1
711	Port Hardy Merchandising Ltd.	Port Hardy	Coast	North Island - Central Coast	5

## THE FOLLOWING MILLS HAD CAPACITY OF LESS THAN 10 MILLION BOARD FEET OF LUMBER IN 2004

Mill Number	Company	Location of Mill	Forest Region	Forest District	Estimated Annual Capacity (millions of board feet)
582	Quadra Island Forest Products Ltd.	Quadra Island	Coast	Campbell River	2
698	R. Durfeld Log Construction Ltd.	Williams Lake	Southern Interior	Central Cariboo	2
710	Rahn Forest Products Ltd.	Prince George	Northern Interior	Prince George	5
744	Rainbow Lumber	Whiskey Creek	Coast	South Island	2
716	Rocky Mountain Salvage	Port Hardy	Coast	North Island - Central Coast	1
271	Rouck Brothers Sawmill Ltd.	Lumby	Southern Interior	Okanagan Shuswap	6
731	SCG Forest Inc.	Courtenay	Coast	Campbell River	2
480	Schapol Logging Ltd.	Enderby	Southern Interior	Okanagan Shuswap	10
535	SDN Contracting Ltd/Chemainus Milling Co.	Lk Cowichan Hwy	Coast	South Island	2
23	Shannon Lumber	Mission	Coast	Chilliwack	6
670	Silva Services Ltd.	Alliford Bay	Coast	Queen Charlotte	1
631	Silvermere Forest Prod Ltd.	Ruskin	Coast	Chilliwack	10
514	Simpcw Development Co Ltd.	Barriere	Southern Interior	Kamloops	5
654	Spike Top Cedar Ltd.	Port Hardy	Coast	North Island - Central Coast	1
24	Suncoast Lumber and Milling	Sechelt	Coast	Sunshine Coast	9
96	Thomson Bros. Lumber Co. Ltd.	Courtenay	Coast	Campbell River	5
99	Ukass Logging Ltd.	Wilmer Creek	Southern Interior	Rocky Mountain	4
229	Wadlegger Log & Constr. Co.	Raft River	Southern Interior	Headwaters	5
623	Yeomans Sawmill Ltd.	Black Creek	Coast	Campbell River	1



## **POLE AND POST MILLS**

(Listed Alphabetically)

Mills producing poles and posts are listed in this section.

### Notes:

1. Measurement units are in thousands of pieces ('000 pcs).
2. Estimated annual capacity is based on a standardized operation of 240 days per year, one 8 hour shift per day, although actual mill operations may vary from this schedule.

Mill Number	Company	Location of Mill	Forest Region	Forest District	Estimated Annual Capacity ('000s of pieces)
4	Bell Pole Company	Lumby	Southern Interior	Okanagan Shuswap	24
48	Bell Pole Company	Revelstoke	Southern Interior	Columbia	24
659	Brisco Wood Preservers Ltd.	Brisco	Southern Interior	Rocky Mountain	26
556	Chinook Forest Products Ltd.	Courtenay	Coast	Campbell River	17
433	Cowichan Pole & Piling Ltd.	Duncan	Coast	South Island	23
40	Gorman Bros Lumber Ltd.	Lumby	Southern Interior	Okanagan Shuswap	27
724	Integrated Pole	100 Mile House	Southern Interior	100 Mile House	12
222	Kanaka Creek Pole Company	Haney	Coast	Chilliwack	12
725	O'Brien & Fuerst Logging Ltd.	Port Clements	Coast	Queen Charlotte	22
677	Pacific Inland Pole & Piling Ltd.	Nakusp	Southern Interior	Arrow/Boundary	18
188	Paterson Pole Ltd.	Rossland	Southern Interior	Arrow/Boundary	29
232	Princeton Wood Preservers Ltd	Princeton	Southern Interior	Cascades	30
648	Selkirk Forest Products Ltd.	Galloway	Southern Interior	Rocky Mountain	20
728	Sierra Cascade Resources II L.L.C.	Port McNeill	Coast	Campbell River	6
729	Sierra Cascade Resources II L.L.C.	Kelsey Bay Division	Coast	Campbell River	6
637	Stella-Jones Inc.	Prince George	Northern Interior	Prince George	30
630	Stella-Jones Inc.	New Westminster	Coast	Chilliwack	27
181	West Fraser Mills Ltd.	Burns Lake	Northern Interior	Nadina	19



## OTHER POLE AND POST MILLS - 2004

Mill Number	Company	Location of Mill	Product	Forest Region	Forest District	Estimated Annual Capacity ('000s of pieces)
498	Aspen Planers Ltd.	Merritt	PST	Southern Interior	Cascades	720
556	Chinook Forest Products Ltd.	Courtenay	PST	Coast	Campbell River	4
117	Continental Pole Ltd.	Pemberton	PLE	Coast	Squamish	12
279	J. R. Blackmore & Sons Ltd.	Lumberton	PST	Southern Interior	Rocky Mountain	504
279	J. R. Blackmore & Sons Ltd.	Lumberton	PLE	Southern Interior	Rocky Mountain	168
721	Mego Wood Products (1989) Ltd.	Princeton	PST	Southern Interior	Cascades	720
250	Nicola Post and Rail Co. Ltd.	Merritt	PST	Southern Interior	Cascades	432
677	Pacific Inland Pole & Piling Ltd.	Nakusp	PLE	Southern Interior	Arrow/Boundary	12
739	Panhandle Forest Products	Lumberton	PST	Southern Interior	Rocky Mountain	240
607	Paxton Forest Products Inc.	Monte Lake	PST	Southern Interior	Okanagan Shuswap	1,152
237	Princeton Post and Rail Co. Ltd.	Princeton	PST	Southern Interior	Cascades	528
237	Princeton Post and Rail Co. Ltd.	Princeton	PLE	Southern Interior	Cascades	144
232	Princeton Wood Preservers Ltd	Princeton	PST	Southern Interior	Cascades	900
232	Princeton Wood Preservers Ltd	Princeton	PST	Southern Interior	Cascades	900
619	Quinton Bros.	Caven	PST	Southern Interior	Rocky Mountain	480
343	TRC Cedar Ltd.	McBride	PST	Southern Interior	Headwaters	192



## **PULP AND PAPER MILLS**

(Listed Alphabetically)

Mills producing pulp and paper are listed in this section. For integrated mills, pulp capacity includes pulp that is used internally to produce paper, and pulp that is shipped from the mill site as market pulp.

### Notes:

1. Measurement units are in thousands of tonnes.
2. Estimated annual capacity is based on a standardized operation of 345 operating days per year, 24 hours per day. Actual operations may vary from this schedule.

PULP AND PAPER MILLS - 2004

Mill Number	Company	Location of Mill	Product	Forest Region	Forest District	Estimated Annual Capacity (000s of tonnes)
128	Abitibi-Consolidated Company of Canada	Mackenzie	PLP	Northern Interior	Mackenzie	217
128	Abitibi-Consolidated Company of Canada	Mackenzie	PPR	Northern Interior	Mackenzie	214
500	Canadian Forest Products Ltd.	Prince George	PLP	Northern Interior	Prince George	302
500	Canadian Forest Products Ltd.	Prince George	PLP	Northern Interior	Prince George	133
500	Canadian Forest Products Ltd.	Prince George	PPR	Northern Interior	Prince George	137
503	Canadian Forest Products Ltd.	Prince George	PLP	Northern Interior	Prince George	541
335	Canadian Forest Products Ltd.	Taylor	PLP	Northern Interior	Peace	217
497	Cariboo Pulp & Paper Co. Ltd.	Quesnel	PLP	Southern Interior	Quesnel	328
501	Celgar Pulp Ltd.	Castlegar	PLP	Southern Interior	Arrow/Boundary	431
506	Crown Packaging Ltd.	Burnaby	PPR	Coast	Chilliwack	106
507	Domtar Inc.	Annacis Island	PPR	Coast	Chilliwack	104
496	Eurocan Pulp & Paper Co.	Kitimat	PLP	Northern Interior	Kalum	449
496	Eurocan Pulp & Paper Co.	Kitimat	PPR	Northern Interior	Kalum	457
484	Howe Sound Pulp & Paper Ltd.	Port Mellon	PLP	Coast	Sunshine Coast	450
484	Howe Sound Pulp & Paper Ltd.	Port Mellon	PPR	Coast	Sunshine Coast	198
206	NorskeCanada Ltd.	Coquitlam	PLP	Coast	Chilliwack	155
330	NorskeCanada Ltd.	Duncan Bay	PLP	Coast	Campbell River	836
330	NorskeCanada Ltd.	Duncan Bay	PPR	Coast	Campbell River	624
483	NorskeCanada Ltd.	Crofton	PLP	Coast	South Island	635
483	NorskeCanada Ltd.	Crofton	PPR	Coast	South Island	386
486	NorskeCanada Ltd.	Powell River	PLP	Coast	Sunshine Coast	350
486	NorskeCanada Ltd.	Powell River	PPR	Coast	Sunshine Coast	413
487	NorskeCanada Ltd.	Port Alberni	PLP	Coast	South Island	288
487	NorskeCanada Ltd.	Port Alberni	PPR	Coast	South Island	502

PULP AND PAPER MILLS - 2004

Mill Number	Company	Location of Mill	Product	Forest Region	Forest District	Estimated Annual Capacity (000s of tonnes)
488	Pope & Talbot Ltd.	Cedar	PLP	Coast	South Island	404
505	Pope & Talbot Ltd.	Mackenzie	PLP	Northern Interior	Mackenzie	223
489	Port Alice Specialty Cellulose Inc.	Port Alice	PLP	Coast	North Island - Central Coast	162
553	Quesnel River Pulp Co.	Quesnel	PLP	Southern Interior	Quesnel	331
491	Scott Paper Ltd.	New Westminster	PLP	Coast	Chilliwack	31
491	Scott Paper Ltd.	New Westminster	PPR	Coast	Chilliwack	77
1	Tembec Industries Ltd.	Skookumchuk	PLP	Southern Interior	Rocky Mountain	250
205	Tembec Industries Ltd.	Chetwynd	PLP	Northern Interior	Peace	207
490	Western Pulp Ltd. Partnership	Woodfibre	PLP	Coast	Squamish	276
2	Weyerhaeuser Company Ltd.	Kamloops	PLP	Southern Interior	Kamloops	466



## **SHAKE AND SHINGLE MILLS**

(Listed Alphabetically)

Mills that produce shake and shingles are listed in this section.

### Notes:

1. Measurement units are in thousands of roofing squares ('000 sq). A roofing square is approximately 100 square feet.
2. Estimated annual capacity is based on a standardized operation of 240 days per year, two 8 hour shifts per day. Actual mill operations may vary from this schedule.

## SHAKE AND SHINGLE MILLS - 2004

Mill Number	Company	Location of Mill	Forest Region	Forest District	Estimated Annual Capacity ('000s of squares)
673	Anbrook Industries Ltd.	Pitt Meadows	Coast	Chilliwack	120
285	Associated Cedar Products (1994) Ltd.	Albion	Coast	Chilliwack	29
288	B C F Shake Mill Ltd.	Fanny Bay	Coast	South Island	49
145	Bath Mill Inc.	Abbotsford	Coast	Chilliwack	202
688	Best Quality Cedar Products Ltd	Maple Ridge	Coast	Chilliwack	168
706	Bill Little Contracting Ltd	Campbell River	Coast	Campbell River	5
550	C. J. Cedar Ltd.	Merville	Coast	Campbell River	2
449	Campbell River Shake and Shingle Ltd	Campbell River	Coast	Campbell River	5
385	Clearbrook Shake	Abbotsford	Coast	Chilliwack	46
583	Coast Mountain Cedar Products	Mission	Coast	Chilliwack	103
315	Comox Valley Shakes Ltd.	Campbell River	Coast	Campbell River	58
638	Confederate Shake & Shingle Ltd.	Youbou	Coast	South Island	19
69	Copper Mountain Cedar Products	Terrace	Northern Interior	Kalum	7
587	G & R Cedar Ltd.	Matsqui	Coast	Chilliwack	69
399	Goat Lake Forest Products Ltd.	Powell River	Coast	Sunshine Coast	65
671	Graham Island Forest Products Ltd.	Masset	Coast	Queen Charlotte	38
71	Hi-Mark Lumber	Duncan	Coast	South Island	12
72	Imperial Shake Co Ltd	Abbotsford	Coast	Chilliwack	96
321	J & D Shake and Cedar Mill Ltd.	Duncan	Coast	South Island	110
76	K.L.P. Shake and Shingle	Vernon	Southern Interior	Okanagan Shuswap	19
686	L & N Forest Products Ltd.	Popkum	Coast	Chilliwack	1
687	Maple Leaf Shake and Shingle Ltd.	Maple Ridge	Coast	Chilliwack	101
402	Meeker Cedar Prod. (1967) Ltd.	Mission	Coast	Chilliwack	312
543	Ocean Blue Cedar Products Ltd.	Campbell River	Coast	Campbell River	115
77	Parker Cedar Custom Mill Products	Pitt Meadows	Coast	Chilliwack	29



## SHAKE AND SHINGLE MILLS - 2004

Mill Number	Company	Location of Mill	Forest Region	Forest District	Estimated Annual Capacity ('000s of squares)
460	Port McNeill Shake & Shingles Ltd.	Port McNeill	Coast	North Island - Central Coast	24
266	Premium Cedar Products Ltd.	Ruskin	Coast	Chilliwack	101
599	Prospective Shake Co. Ltd.	Mission	Coast	Chilliwack	96
374	Remco Shake & Shingle Prod Ltd.	Cooper Creek	Southern Interior	Kootenay Lake	19
455	S & W Shake & Shingle Ltd.	Ruskin	Coast	Chilliwack	72
167	Seltic-Sherwen Shake/Shingle Ltd.	Menzies Bay	Coast	Campbell River	9
591	Serpentine Cedar Ltd.	Fort Langley	Coast	Chilliwack	58
612	Silver Creek Premium Products	Mission	Coast	Chilliwack	58
631	Silvermere Forest Prod Ltd.	Ruskin	Coast	Chilliwack	24
106	Teal Cedar Prod (1977) Ltd.	Surrey	Coast	Chilliwack	168
722	Titan Ridge	Port McNeill	Coast	North Island - Central Coast	96
723	Vancouver Island Shake and Shingle	Port McNeill	Coast	North Island - Central Coast	12
691	W. Boyes Shake and Shingle Ltd.	Gateway	Southern Interior	100 Mile House	14
464	Waldun Forest Products Ltd.	Ruskin	Coast	Chilliwack	197



## **VENEER, PLYWOOD, AND OTHER PANEL MILLS**

(Listed Alphabetically)

Mills producing veneer, plywood and other types of panel are listed in this section. For mills that produce both market veneer and plywood, veneer capacity includes market veneer and the veneer that is used within the mill to manufacture plywood. Panel mills that use wood residuals to produce panels or that do not have log-processing capability are also listed in this report.

### Notes:

1. Measurement units are in millions of square feet, 3/8" basis (mill. sq. ft., 3/8").
2. Estimated annual capacity for veneer mills is based on a standardized operation of 240 days per year, two 8 hour shifts per day. For plywood mills, estimated annual capacity is based on a standardized operation of 240 days per year, three 8 hour shifts per day. For OSB and other Panel mills, estimated annual capacity is based on a standardized operation of 345 days per year, three 8 hour shifts per day. Actual operations may vary from these schedules.

VENEER, PLYWOOD, OSB AND OTHER PANEL MILLS - 2004

Mill Number	Company	Location of Mill	Product	Forest Region	Forest District	Estimated Annual Capacity (million sq. ft. 3/8" basis)
109	Ainsworth Lumber Co. Ltd.	Savona	VNR	Southern Interior	Kamloops	120
109	Ainsworth Lumber Co. Ltd.	Savona	PLY	Southern Interior	Kamloops	148
115	Ainsworth Lumber Co. Ltd.	Lillooet	VNR	Southern Interior	Cascades	121
411	Ainsworth Lumber Co. Ltd.	100 Mile House	OSB	Southern Interior	100 Mile House	431
51	Atco Lumber Ltd.	Fruitvale	VNR	Southern Interior	Arrow/Boundary	101
34	B C Veneer Products Ltd	Surrey	VNR	Coast	Chilliwack	24
121	Canadian Forest Products Ltd.	Fort Nelson	VNR	Northern Interior	Fort Nelson	206
121	Canadian Forest Products Ltd.	Fort Nelson	PLY	Northern Interior	Fort Nelson	302
151	Canadian Forest Products Ltd.	Prince George	VNR	Northern Interior	Prince George	121
151	Canadian Forest Products Ltd.	Prince George	PLY	Northern Interior	Prince George	173
459	Canadian Forest Products Ltd.	Fort Nelson	OSB	Northern Interior	Fort Nelson	516
536	Canadian Forest Products Ltd.	New Westminster	PNL	Coast	Chilliwack	58
246	Canpar Industries Ltd	Grand Forks	PNL	Southern Interior	Arrow/Boundary	311
508	CIPA Lumber Co. Ltd.	Annacis Island	VNR	Coast	Chilliwack	91
244	Coastland Wood Ind. Ltd.	Nanaimo	VNR	Coast	South Island	96
12	Federated Co-op Ltd.	Canoe	VNR	Southern Interior	Okanagan Shuswap	96
12	Federated Co-op Ltd.	Canoe	PLY	Southern Interior	Okanagan Shuswap	108
398	Kamloops Forest Products Ltd.	Kamloops	VNR	Southern Interior	Kamloops	31
84	Louisiana Pacific Canada Ltd.	Golden	VNR	Southern Interior	Columbia	127
84	Louisiana Pacific Canada Ltd.	Golden	PLY	Southern Interior	Columbia	127
650	Louisiana Pacific Canada Ltd.	Dawson Creek	OSB	Northern Interior	Peace	445
3	M.V.P. Veneer Inc.	Kamloops	VNR	Southern Interior	Kamloops	7
169	McBride Forest Ind. Ltd.	McBride	VNR	Southern Interior	Headwaters	82
357	Northern Engineering Wood Products Inc.	Smithers	PNL	Northern Interior	Skeena Stikine	80
478	Richmond Plywood Corp. Ltd.	Richmond	VNR	Coast	Chilliwack	173

VENEER, PLYWOOD, OSB AND OTHER PANEL MILLS - 2004

Mill Number	Company	Location of Mill	Product	Forest Region	Forest District	Estimated Annual Capacity (million sq. ft, 3/8" basis)
478	Richmond Plywood Corp. Ltd.	Richmond	PLY	Coast	Chilliwack	187
35	Tolko Industries Ltd.	Lumby	VNR	Southern Interior	Okanagan Shuswap	178
67	Tolko Industries Ltd.	Kelowna	VNR	Southern Interior	Okanagan Shuswap	132
67	Tolko Industries Ltd.	Kelowna	PLY	Southern Interior	Okanagan Shuswap	156
68	Tolko Industries Ltd.	Armstrong	VNR	Southern Interior	Okanagan Shuswap	211
68	Tolko Industries Ltd.	Armstrong	PLY	Southern Interior	Okanagan Shuswap	396
394	Tolko Industries Ltd.	Heffley Creek	VNR	Southern Interior	Kamloops	144
394	Tolko Industries Ltd.	Heffley Creek	PLY	Southern Interior	Kamloops	186
105	West Fraser Mills Ltd.	Williams Lake	VNR	Southern Interior	Central Cariboo	122
105	West Fraser Mills Ltd.	Williams Lake	PLY	Southern Interior	Central Cariboo	188
112	West Fraser Mills Ltd.	Quesnel	VNR	Southern Interior	Quesnel	144
112	West Fraser Mills Ltd.	Quesnel	PLY	Southern Interior	Quesnel	202
113	West Fraser Mills Ltd.	Quesnel	PNL	Southern Interior	Quesnel	279



## **OTHER PRIMARY PROCESSING MILLS**

(Listed Alphabetically)

Mills listed in this section have log processing capability but do not produce any of the previously listed products.

---

Mill Number	Company	Location of Mill	Product	Forest Region	Forest District
736	Jack Onefrey	Lac La Hache	SSB	Southern Interior	100 Mile House
743	John Salo	Sointula	SSB	Coast	North Island - Central Coast
84	Louisiana Pacific Canada Ltd.	Golden	LVL	Southern Interior	Columbia
657	Meeker Log and Timber (Kamloops) Ltd.	Kamloops	SSB	Southern Interior	Kamloops
511	Timbre Tonewood Ltd.	Parksville	GTR	Coast	South Island

---



