
Major Primary Timber Processing Facilities In British Columbia

2005



The Best Place on Earth

Ministry of Forests and Range
Economics and Trade Branch



Major Primary Timber Processing Facilities In British Columbia

2005

Economics and Trade Branch
Ministry of Forests and Range
Victoria, B.C.

December 2006

Foreword

This is the 2005 edition of the Ministry of Forests and Range publication of *Major Primary Timber Processing Facilities in British Columbia* and refers to timber processing mills that have primary log processing capability and which operated during 2005. Coverage does not include re-manufacturing plants. Pulp and paper mills and panel plants are included in this report even though some do not have primary log processing capabilities. Where a mill produces more than one product (e.g. lumber and veneer; poles and posts), each operation is listed in the respective sections of the report.

The information was gathered through a survey of individual processing mills. If a mill did not submit a response, mill specific information reported in trade publications, directories and corporate annual reports may have been used. In some cases Ministry of Forests and Range staff provided estimates based on their knowledge of the operation and information reported in previous years.

This year's report includes an analysis section with time series data for capacity, output and log input for lumber and veneer mills, as well as some additional details on products and inputs to lumber mills in British Columbia in 2005.

This report is available free of charge on the Ministry of Forests and Range Internet site at:

<http://www.for.gov.bc.ca/het/>

The report is updated annually. Comments, errors or omissions may be sent to one of the following locations:

Economics and Trade Branch
Ministry of Forests and Range
P.O. Box 9514, Station Prov Gov,
Victoria, B.C.
V8W 9C3

Phone (250) 387-8610
FAX (250) 387-5050

E-mail: Forests.EconomicsAndTradeBranchOffice@gov.bc.ca

Acknowledgements

The cooperation of mill personnel who responded to the Ministry of Forests and Range survey is gratefully acknowledged.

The important role played by Ministry of Forests and Range regional and district staff in securing mill responses is also gratefully acknowledged.

Table of Contents

	PAGE
Map of Forest Regions and Districts effective April 1, 2003.....	4
Analysis	
A. Introduction.....	5
B. Wood Fibre Supply and Use in British Columbia	5
C. Time Series Data	
1) Medium and Large Lumber Mills.....	9
2) Veneer Mills	14
D. Additional Information on Lumber Mills in BC.....	18
List of Mills	
Chip Mills	21
Log Home Mills	23
Lumber Mills.....	26
Pellet Mills.....	36
Pole and Post Mills	38
Pulp and Paper Mills	41
Shake and Shingle Mills.....	44
Veneer, Plywood, and Other Panel Mills.....	47
Other Primary Processing Mills.....	50

Abbreviations for Products

UTI - Utility Pole	MDF - Medium Density Fiberboard
PLE - Other Pole	PLY - Plywood
PST - Fence Post	VNR - Veneer
PLP - Pulp	LVL - Laminated Veneer Lumber
PPR - Paper	SSB - Shake and Shingle Block
OSB - Oriented Strand Board	
PNL - Other Panel	
GTR - Guitar	

Forest Region and District Boundaries - April 1, 2003

RSI · Southern Interior Forest Region (Kamloops)

- DMH · 100 Mile House Forest District (100 Mile House)
- DAB · Arrow Boundary Forest District (Castlegar, Grand Forks, Nakusp)
- DCS · Cascades Forest District (Merritt, Lillooet, Princeton)
- DCC * Central Cariboo Forest District (Williams Lake, Horsefly, Likely)
- DCH · Chilcotin Forest District (Alexis Creek)
- DCO · Columbia Forest District (Revelstoke, Golden)
- DHW · Headwaters Forest District (Clearwater, McBride)
- DKA * Kamloops Forest District (Kamloops)
- DKL * Kootenay Lake Forest District (Nelson)
- DOS * Okanagan Shuswap Forest District (Vernon, Penticton, Salmon Arm)
- DQU · Quesnel Forest District (Quesnel)
- DRM · Rocky Mountain Forest District (Cranbrook, Invermere)

* Denotes BC Timber Sales Location

RNI · Northern Interior Forest Region (Prince George)

- DFN · Fort Nelson Forest District (Fort Nelson)
- DJA · Fort St. James Forest District (Fort St. James)
- DKM * Kalum Forest District (Terrace)
- DMK · Mackenzie Forest District (Mackenzie)
- DND * Nadina Forest District (Burns Lake, Houston)
- DPC * Peace Forest District (Dawson Creek, Fort St. John)
- DPG * Prince George Forest District (Prince George)
- DSS · Skeena Stikine Forest District (Smithers, Dease Lake, Hazelton)
- DVA * Vanderhoof Forest District (Vanderhoof)

RCO · Coast Forest Region (Nanaimo)

- DCR * Campbell River Forest District (Campbell River)
- DCK * Chilliwack Forest District (Chilliwack)
- DNC · North Coast Forest District (Prince Rupert)
- DNI * North Island - Central Coast Forest District (Port McNeill, Hagensborg)
- DQC · Queen Charlotte Islands Forest District (Queen Charlotte City)
- DSI · South Island Forest District (Port Alberni, Duncan)
- DSQ · Squamish Forest District (Squamish)
- DSC · Sunshine Coast Forest District (Powell River, Sechelt)



ANALYSIS

A. Introduction

The Analysis section of the report presents summary statistics derived from the mill survey database, and selected analysis of these statistics. First, fibre supply and use in the province in 2005 is examined through a series of pie charts. The next section presents times series statistics for medium and large lumber and veneer mills. Section D presents a summary of additional lumber statistics collected in 2005, including types of lumber produced, species used and destinations for products.

B. Wood Fibre Supply and Use in British Columbia, 2005

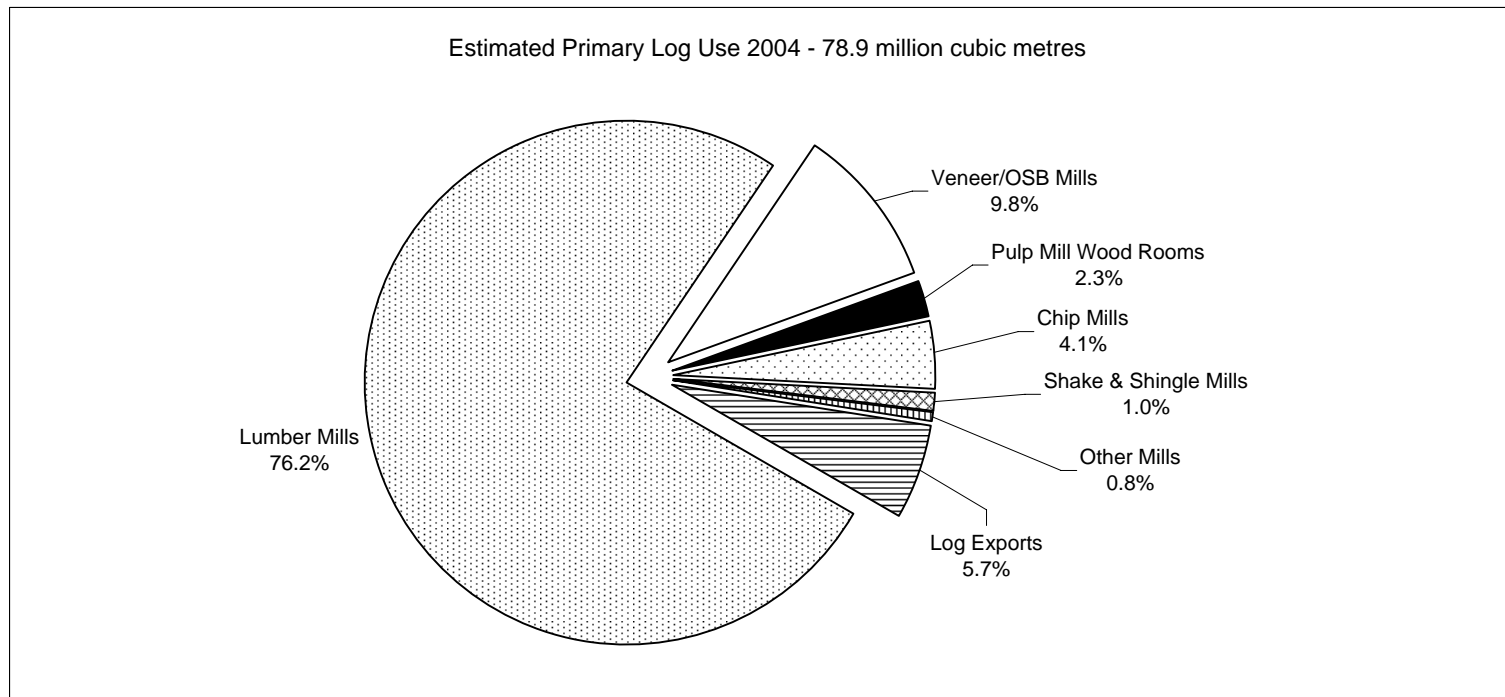
Figure 1 shows estimated log use in British Columbia by mill type. Total log input to primary mills increased by about 3.5 million cubic metres or almost 5% over 2004 levels. Lumber mills used 76% of the log harvest and imports in 2005. Veneer and OSB mills were the next largest user of logs at 10%.

Figure 2 estimates product recovery from lumber mills. It shows that 47% of the volume of wood entering lumber mills was converted to lumber, with the remaining 53% being converted to chips, sawdust and shavings.

Figure 3 combines figures 1 and 2 with a chart showing fibre used by pulp mills. In 2005, 95% of the fibre used by pulp mills was in the form of chips and sawdust obtained from other mills, while 5% was from logs chipped in the pulp mill.

Figure 1: Estimated British Columbia Primary Log Use - 2005

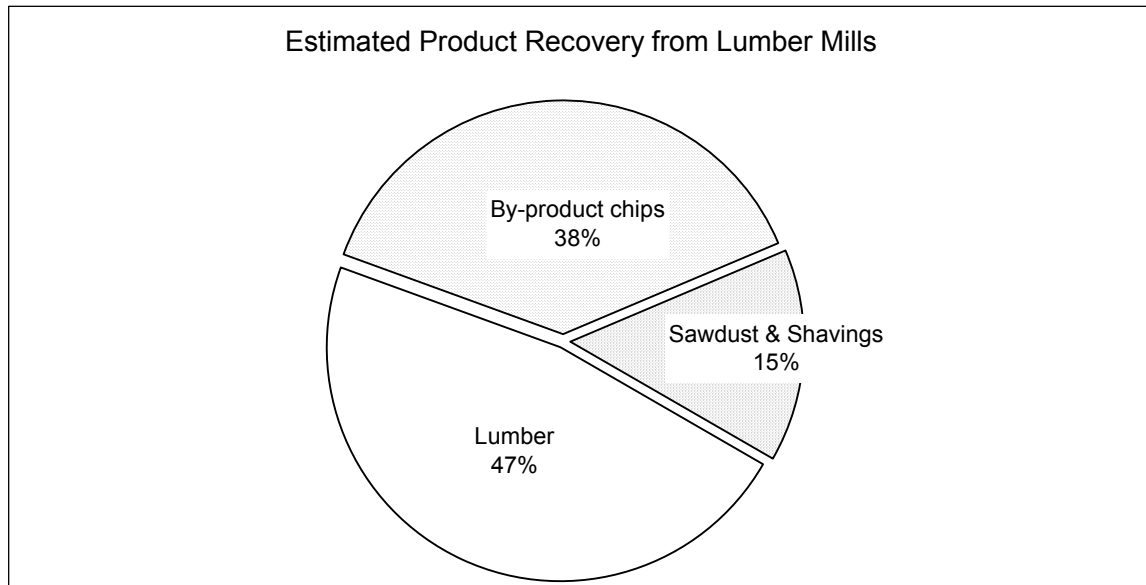
Log Use By:	COAST			INTERIOR			PROVINCE		
	Number of Mills	Estimated Volume Used (000 m ³)	Per Cent	Number of Mills	Estimated Volume Used (000 m ³)	Per Cent	Number of Mills	Estimated Volume Used (000 m ³)	Per Cent
Lumber Mills	75	11,933	52.7%	118	51,901	84.9%	193	63,833	76.2%
Veneer/OSB Mills	4	2,035	9.0%	19	6,191	10.1%	23	8,226	9.8%
Pulp Mill Wood Rooms	10	1,200	5.3%	13	766	1.3%	23	1,966	2.3%
Chip Mills	7	2,141	9.5%	6	1,329	2.2%	13	3,470	4.1%
Shake & Shingle Mills	35	808	3.6%	4	17	0.0%	39	825	1.0%
Other Mills	22	146	0.6%	60	511	0.8%	82	656	0.8%
Log Exports		4,383	19.4%		386	0.6%		4,769	5.7%
Total Use	153	22,645	100.0%	220	61,101	100.0%	373	83,746	100.0%
2005 Harvest		23,859			62,810			86,669	
Less Waste and Rejects (estimate)								1,759	
Plus Log Imports								40	
Total Available								84,950	
Difference								1,203	1.4%



Sources:
Survey data; Statistics Canada trade data; BC Ministry of Forests and Range log export statistics.

Figure 2: Estimates of Product Recovery from Lumber Mills - 2005

	Units	Coast	Interior	Province
Number of Mills		75	118	193
Log Input	('000 m ³)	11,933	51,901	63,833
Lumber Output				
Lumber Output (nominal measure)	(mfbm)	2,722	14,515	17,237
Lumber Recovery Factor	(mfbm/m ³)	0.228	0.280	0.270
Conversion Factor *	(m ³ /mfbm)	1.835	1.737	1.752
= Actual Volume of Lumber Produced	('000 m ³)	4,994	25,213	30,207
As Per Cent of Log Input	(%)	42%	49%	47%
By Product Chip Output (from Lumber Mills)				
By Product Chip Output	(000 bdu)	1,769	7,059	8,828
By Product Chip Recovery Factor	(bdu/'000 m ³)	148	136	138
Conversion Factor	(m ³ /bdu)	2.62	2.78	2.75
= Volume of Chips Produced	('000 m ³)	4,634	19,625	24,258
As Per Cent of Log Input	(%)	39%	38%	38%
Sawdust and Shavings - Estimated Volume				
As Per Cent of Log Input	(%)	19%	14%	15%

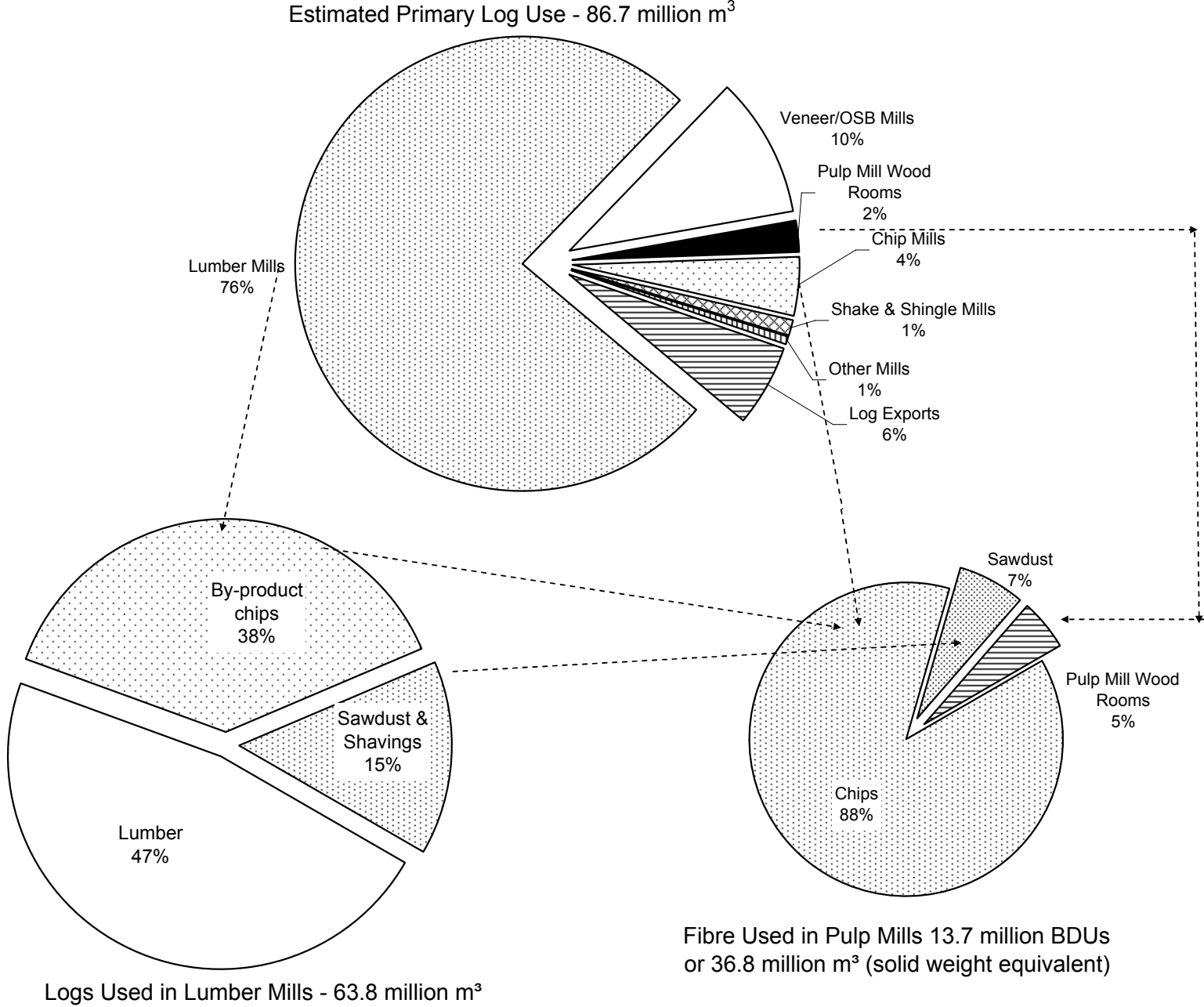


Sources: Survey data and Forintek Canada Corp., "Conversion Factors for the Forest Products Industry in Western Canada", Special Publication No. SP-24R, 1985, Table 21.

Notes:

* This conversion factor (Forintek, page 32) is to convert lumber output in nominal board feet to cubic metres solid wood equivalent. mfbm = thousand board feet; m³ = cubic metres; bdu = bone dry unit = 2400 pounds.

Figure 3: Estimated British Columbia Log and Fibre Use - 2005



C. Time Series Data

1) Medium and Large Lumber Mills

There were 101 lumber mills with capacity over 40 million board feet per year operating in BC in 2005, accounting for about 98% of lumber production¹. Figure 4 shows the distribution of lumber mills by mill size, for the Coast and Interior.

Figure 4: Distribution of British Columbia Lumber Mill Size - 2005

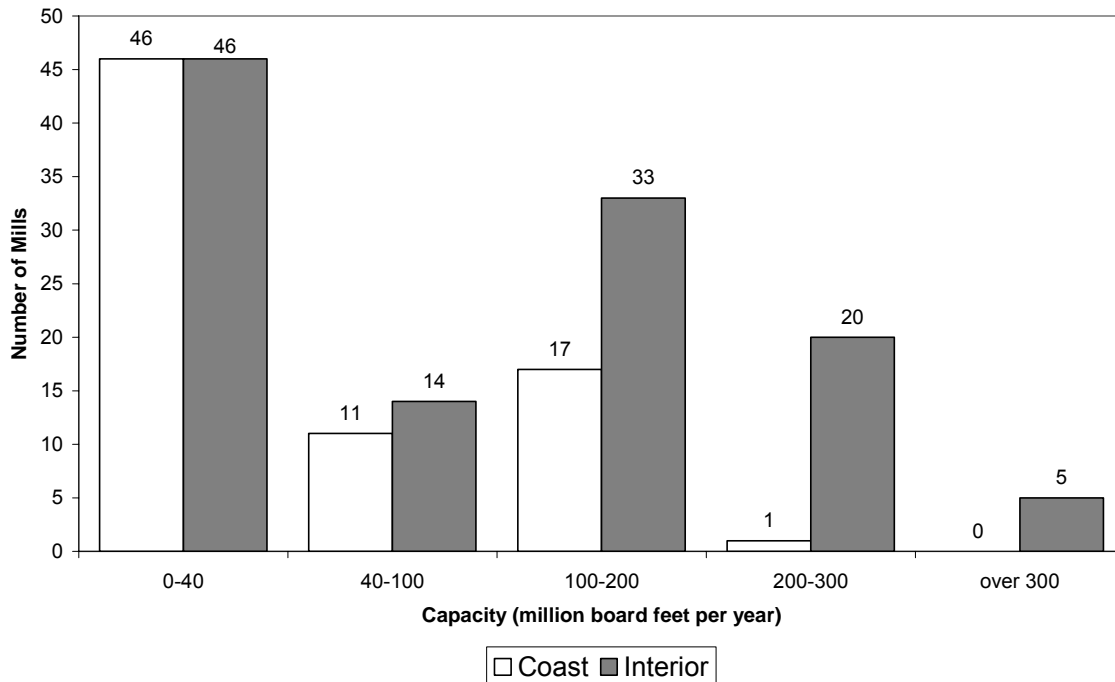


Table 1 shows number of mills, lumber capacity, production, input, and estimated lumber recovery factors for medium and large sized sawmills in British Columbia from 1990 to 2005². The data covers 29 mills on the Coast and 72 in the Interior in 2005.

Although total capacity for these mills has remained relatively constant at about 15 billion board feet per year, Figures 5 and 6 show that as the number of mills fell over the last 15 years, the average capacity per mill increased markedly, especially in the Interior since 2001.

¹ This publication also reports estimated annual capacity for a large number of small mills: 92 mills with capacity under 40 million board feet in 2005, of which about half had capacity of under 5 million board foot per year.

² The time series data was developed from historical databases from the Ministry of Forests and Range annual mill survey and only covers those mills with annual capacity of 40 million board feet or more.

Figure 7 shows that capacity utilization fluctuates year to year. In the Interior, capacity utilization is higher than on the Coast and shows an upward trend, especially in the last few years. On the Coast, capacity utilization dropped markedly from 1994 to 1998, but increased from 2001 to 2004.

Figure 8 shows that the lumber recovery factor (the volume of lumber that mills get from a cubic metre of log input) is increasing over time, again especially in the Interior. The lumber recovery factor for the Coast is lower partly because of species differences and the more diverse range of lumber products manufactured on the Coast as compared to the Interior. Some industry experts expect the lumber recovery factor for Interior mills to stop increasing over the next several years, and perhaps decrease as mills begin to saw a higher proportion of lower quality beetle killed timber. This may explain the very small increase in the Interior lumber recovery factor in 2005.

Table 1: British Columbia Lumber Mill Summary Statistics for Medium and Large Sized Mills

		1990...	1995...	2000	2001	2002	2003	2004	2005	% change 1990-2005
COAST										
Number of Mills		43	38	36	34	29	28	27	29	-33%
Total Capacity	billion board feet per year	4.2	3.8	4.0	3.7	3.3	3.2	3.2	3.4	-20%
Total Output	billion board feet per year	3.8	3.3	3.1	2.5	2.4	2.3	2.6	2.6	-31%
Total Input	million cubic metres per year	17.1	15.0	13.8	11.3	10.7	10.1	11.3	11.2	-34%
Average Capacity	million board feet per mill per year	99	100	111	109	113	116	118	117	19%
Capacity Utilization	output divided by capacity	89%	88%	77%	67%	74%	72%	81%	76%	-14%
Lumber Recovery Factor	'000 board feet per cubic metre	0.220	0.223	0.222	0.222	0.228	0.233	0.229	0.231	5%
INTERIOR										
Number of Mills		88	83	77	78	73	70	71	71	-19%
Total Capacity	billion board feet per year	10.7	10.4	10.8	11.3	11.6	11.9	12.6	12.9	21%
Total Output	billion board feet per year	10.0	10.0	10.5	10.3	11.8	11.9	13.4	14.3	43%
Total Input	million cubic metres per year	42.2	40.9	40.0	38.1	43.4	43.1	47.6	50.7	20%
Average Capacity	million board feet per mill per year	121	125	140	145	159	170	177	181	50%
Capacity Utilization	output divided by capacity	93%	96%	98%	90%	102%	100%	107%	111%	19%
Lumber Recovery Factor	'000 board feet per cubic metre	0.236	0.245	0.263	0.269	0.273	0.275	0.281	0.282	19%
PROVINCE										
Number of Mills		131	121	113	112	102	98	98	100	-24%
Total Capacity	billion board feet per year	14.9	14.2	14.7	15.1	14.9	15.1	15.8	16.3	9%
Total Output	billion board feet per year	13.7	13.3	13.6	12.8	14.3	14.2	16.0	16.9	23%
Total Input	million cubic metres per year	59.2	55.8	53.8	49.4	54.0	53.1	58.9	61.9	5%
Average Capacity	million board feet per mill per year	114	117	130	134	146	154	161	163	43%
Capacity Utilization	output divided by capacity	92%	94%	92%	85%	96%	94%	101%	104%	12%
Lumber Recovery Factor	'000 board feet per cubic metre	0.232	0.239	0.253	0.258	0.264	0.267	0.271	0.272	17%

Medium and Large Sized Mills defined as lumber mills with estimated capacity over 40 million board feet per year.

Figure 5: Number of British Columbia Medium and Large Sized Lumber Mills

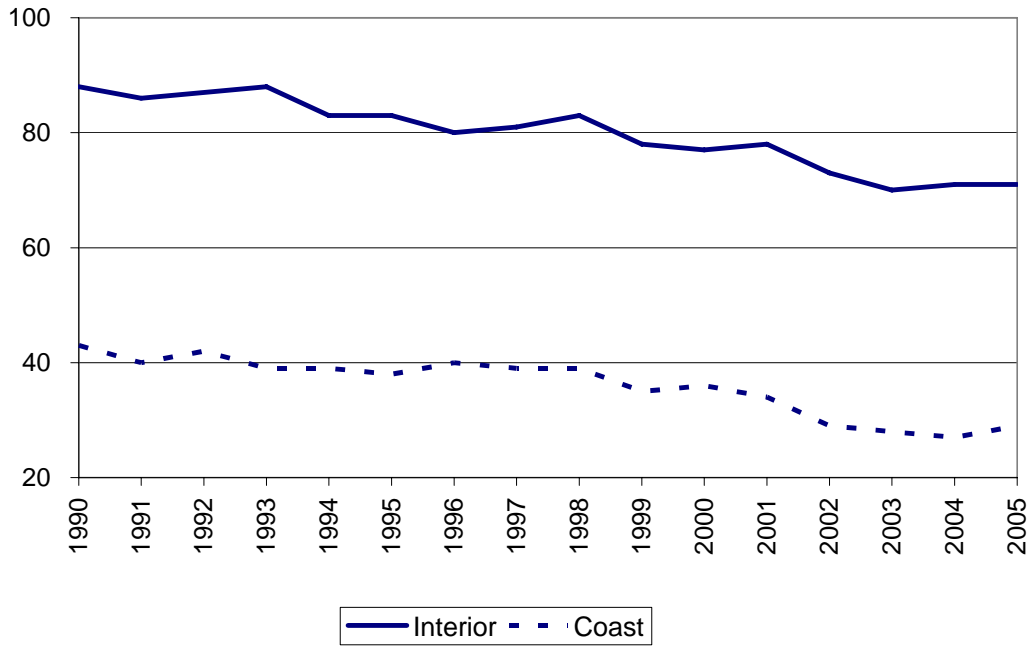
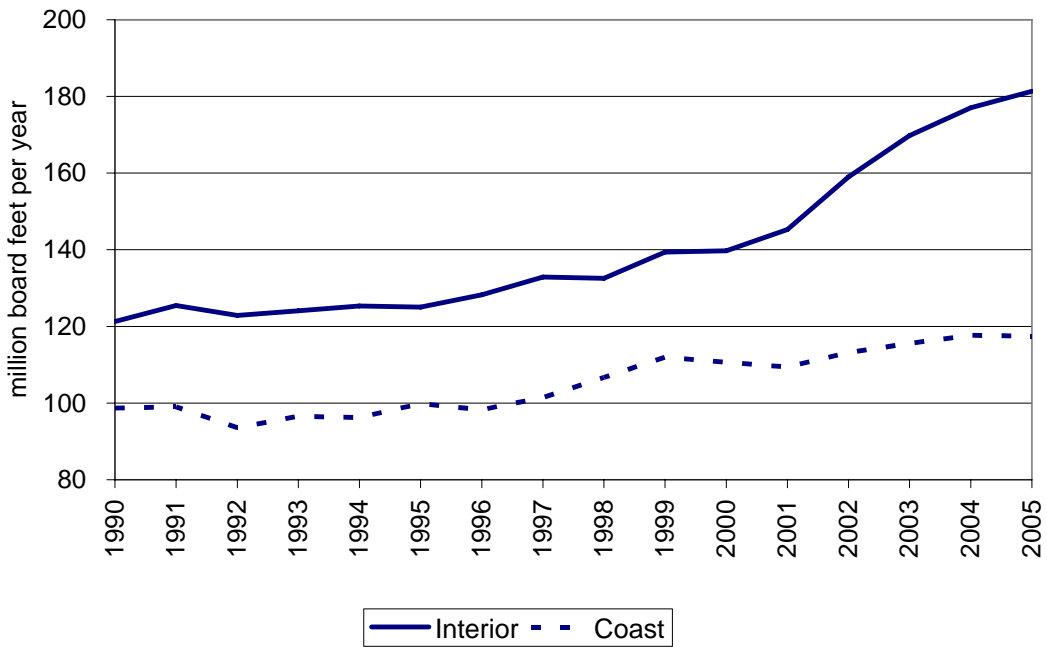
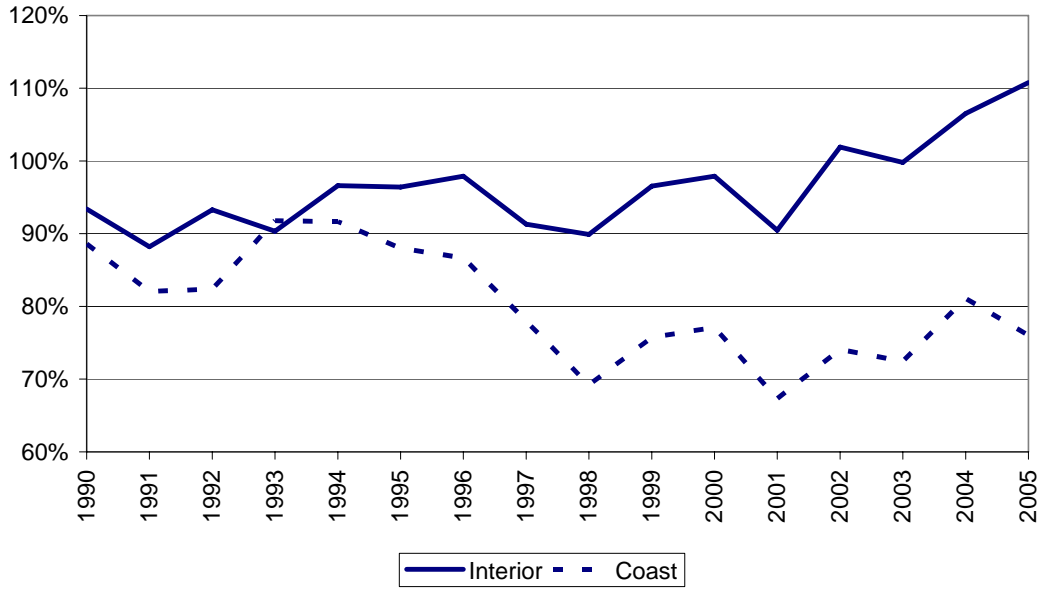


Figure 6: Average Size of British Columbia Medium and Large Sized Lumber Mills

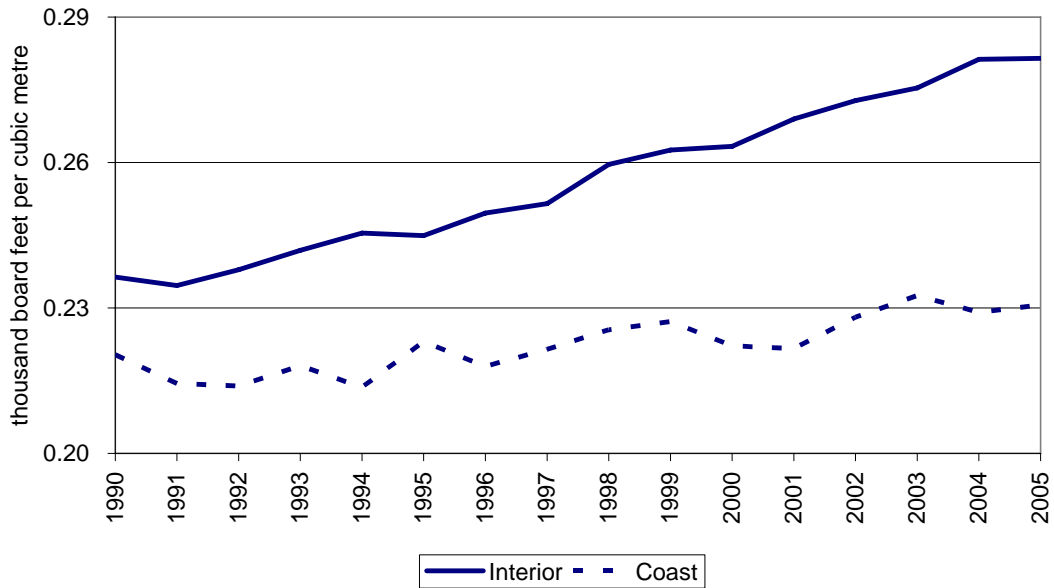


**Figure 7: Capacity Utilization for British Columbia
Medium and Large Sized Lumber Mills**



Capacity estimated assuming 2, 8-hour shifts, 240 days per year.

**Figure 8: Lumber Recovery Factor for British Columbia
Medium and Large Sized Lumber Mills**



2) Veneer Mills

Veneer is used as an input to plywood manufacturing as well as an input to other engineered wood products such as laminated veneer lumber. Ten veneer mills in British Columbia have a plywood mill on the same site, whereas 6 mills produce “market veneer” for sale to plywood and other types of mills³.

Table 2 gives a provincial overview of veneer mill statistics for 1990-2005. These statistics show 16 veneer mills operating in British Columbia in 2005, 3 on the Coast and 13 in the Interior. Total veneer capacity grew by about 17% between 1990 and 2005, as measured by 2 shifts, 240 days per year. However, output grew by 50% over the same time period as mills steadily increased their capacity utilization.

Figure 9 shows total output and log input compared to capacity for veneer mills in British Columbia. Figure 10 shows that the average size of veneer mills grew steadily over the period. Figure 11 shows a steady increase in capacity utilization as mills shifted from 2 to 3 shifts per day. Figure 12 shows that BC veneer mill's recovery factor grew over the 1990s, but has remained steady since 2000 at about 580 square feet per cubic metre of log input.

³ These numbers and the time series statistics below do not include 3 very small veneer mills.

Table 2: British Columbia Veneer Mill Summary Statistics

		1990 ...	1995 ...	2000	2001	2002	2003	2004	2005	% change 1990-2005
Number of Mills		20	17	16	16	16	16	16	16	-20%
Total Capacity	(million square feet 3/8" basis)	2,102	2,131	2,030	2,124	2,212	2,228	2,400	2,459	17%
Total Output	(million square feet 3/8" basis)	2,306	2,387	2,567	2,724	2,911	2,901	3,362	3,477	51%
Total Log Input	(thousand cubic metres)	4,398	4,143	4,390	4,665	4,989	4,976	5,754	6,001	36%
Average Capacity	(million square feet per mill)	105	125	127	133	138	139	150	154	46%
Average Log Input	(thousand cubic metres per mill)	220	244	274	292	312	311	360	375	71%
Capacity Utilization	(output divided by capacity)	110%	112%	126%	128%	132%	130%	140%	141%	29%
Recovery Factor	(square feet per cubic metre log input)	524	576	585	584	584	583	584	579	11%

Source: Major Primary Timber Processing Facilities in British Columbia, internal database, various years

Output Capacity is estimated based on two 8 hour shifts, 240 days per year

Very small mills using an average of less than 25,000 cubic metres of logs per year are not included in these statistics

Figure 9: BC Veneer Mills, Capacity, Output and Log Input

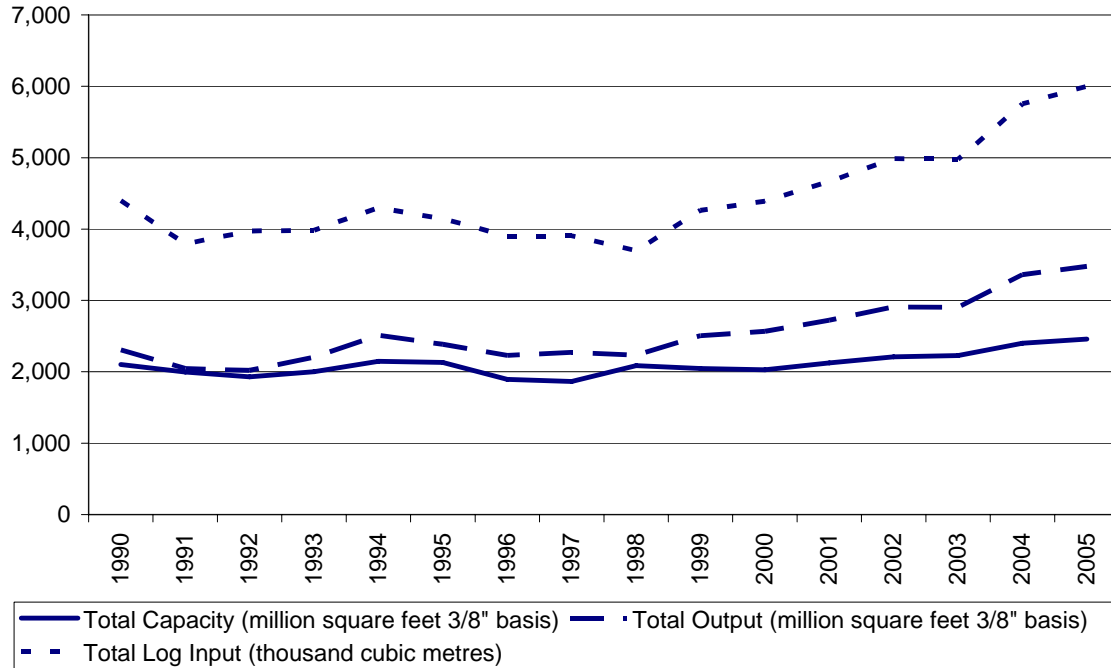


Figure 10: BC Veneer Mills, Number of Mills and Average Capacity

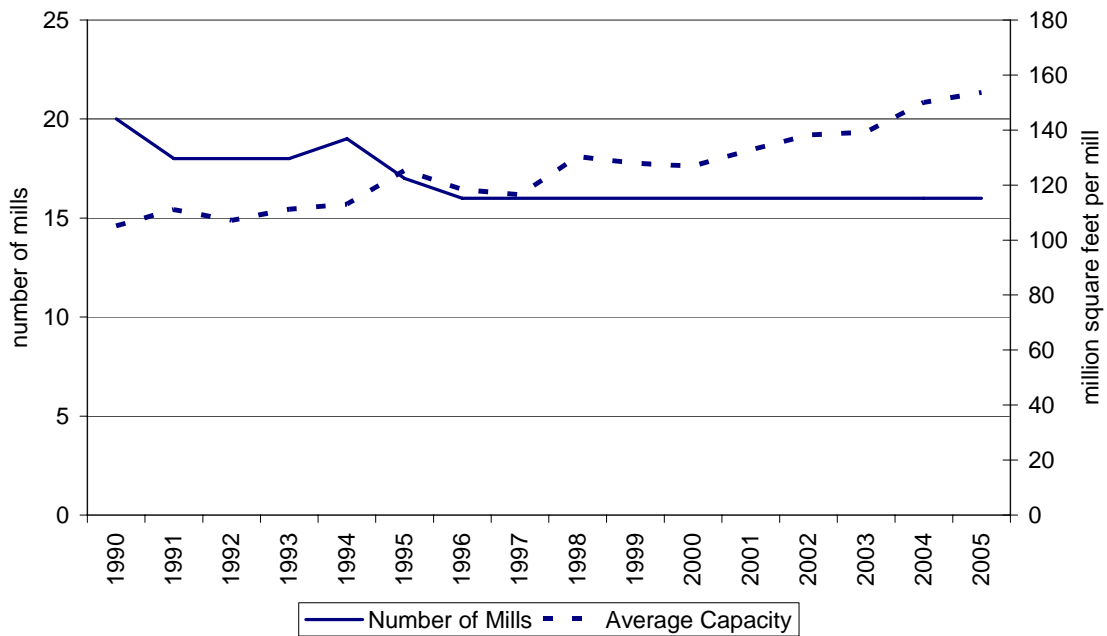
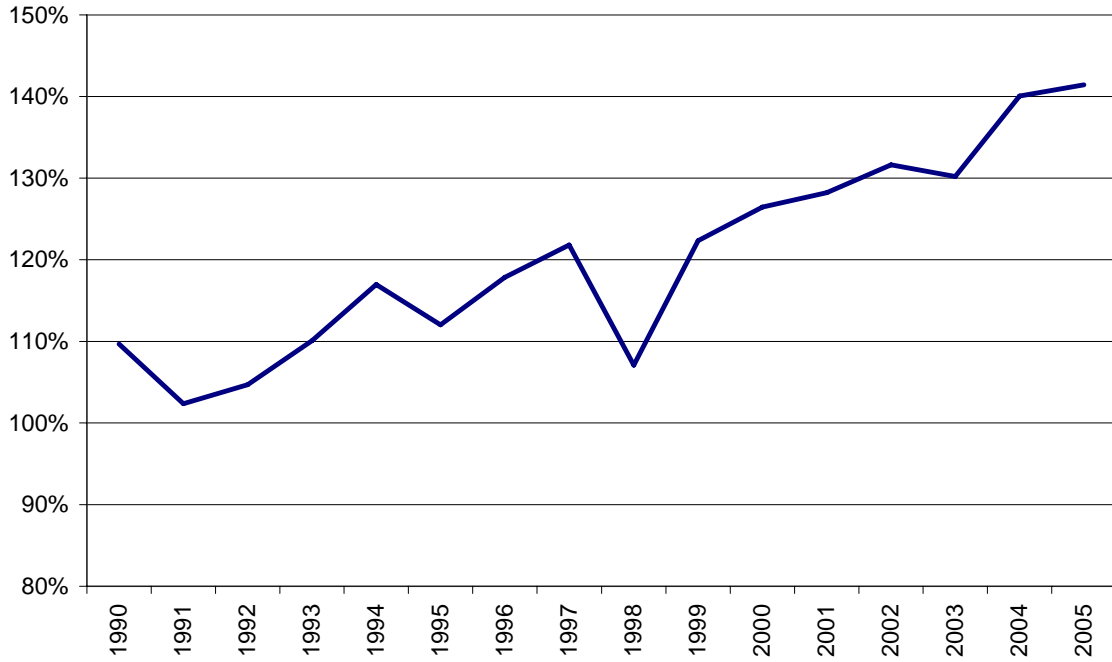
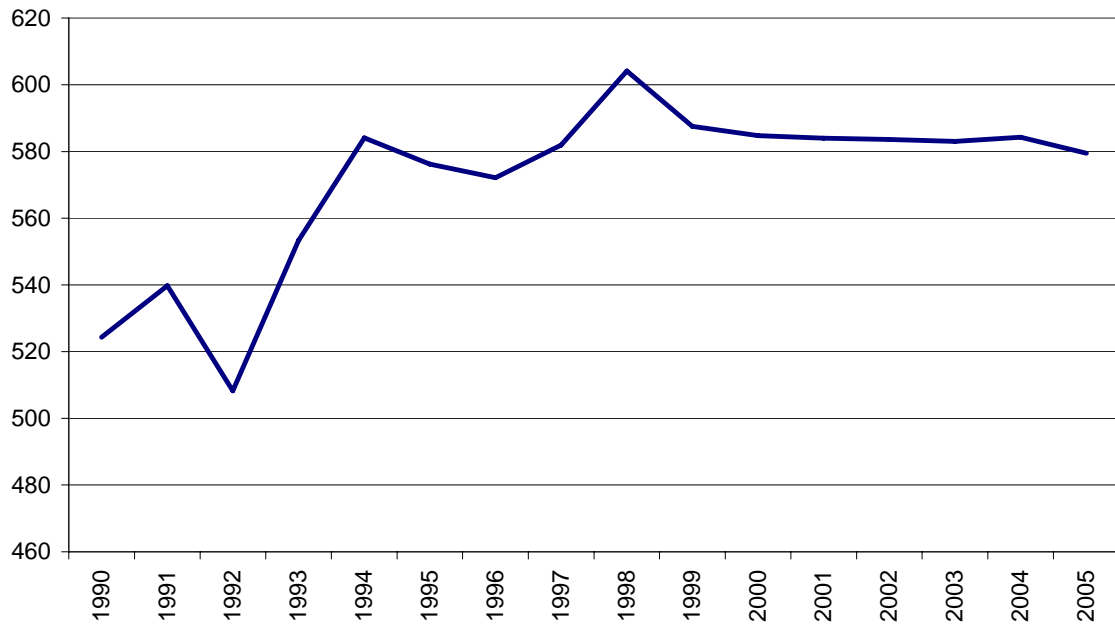


Figure 11: BC Veneer Mills Capacity Utilization



**Figure 12: BC Veneer Mills Recovery Factor
square feet per cubic metre log input**



D. Additional Information on Lumber Mills in BC

In addition to the regular one-page mill survey, medium and large lumber companies were asked to provide some additional information on products, inputs and markets for 2005. This section provides a summary of the results of this additional survey of lumber mills.

Of the 100 medium and large sized lumber mills surveyed in 2005, 86 responded to the request for extra information, representing approximately 90% of Coast production and 98% of Interior production⁴. The survey results discussed below are summarized in Table 3.

Lumber Products

The survey asked mills to report the approximate percentage of production that was made up by various lumber products⁵. For Northern Interior mills 99% of lumber produced was 2 inch dimension lumber products (i.e. 2x4s, 2x6s, 2x8s, etc.). The Southern Interior mills reported 93% of production was 2 inch dimension lumber products, and 5% boards. Coastal mills reported a diverse product mix: 48% 2 inch dimension lumber, 13% greater than 2 inch dimension lumber, 15% baby squares, and 7-9% each of timbers, boards and other products.

Lumber Markets

Mills were asked to report the approximate percentage of production that went to different markets. Southern Interior mills reported US markets accounting for 76% of shipments and Canadian markets 19%. Northern Interior mills showed a similar pattern, but with US shipments taking a smaller share at 67%, and Canadian shipments a higher share at 27%. Coast shipments were split between Canada 26%, US 35%, Japan 29% and other 11%.

Log Inputs

Mills were asked to identify the main species of logs sawn, whether the logs were old or second growth, and whether the logs were from the company's own Crown tenure, own private land or were purchased or traded.

Coast mills reported using 47% Hemlock/Balsam, 28% Cedar, 18% Douglas Fir and 7% other. The Northern Interior used 98% Spruce-Pine-Fir (SPF). The Southern Interior used 81% SPF, 13% Douglas Fir/Larch, and 6% other. Coast mills reported using about 60% old growth and 40% second growth in 2005.

⁴ Not all respondents responded to all questions so in some cases, the results reported are based on less than 86 responses.

⁵ Definitions are taken from Random Lengths "Terms of the Trade", 4th edition as follows:
Dimension Lumber: Lumber that is from two inches up to, but not including, five inches thick and that is two or more inches in width.

Baby Squares: Lumber, approximately four inches square, produced for the Japanese market, usually of Western Hemlock.

Timbers: Lumber that is at least five inches in its smallest dimension

Boards: Lumber less than two inches in nominal thickness and one inch or more in width.

About 55-60% of the logs used in lumber mills in each region were reported to be harvested from the company's own Crown tenure, a further 35-40% were purchased or traded logs, and up to 5% harvested from the company's own private lands.

Table 3: Additional Information on Lumber Mills in BC

Output Characteristics

Product	Coast	Interior Total	Northern Interior	Southern Interior	Province
D.L.* - 2 inch products	47.9%	96.0%	98.8%	93.3%	88.4%
D.L.* - Greater than 2 inch products	13.1%	0.1%	0.0%	0.1%	2.1%
D.L.* - Baby Squares	14.9%	0.1%	0.0%	0.1%	2.4%
Timbers	7.0%	0.2%	0.2%	0.2%	1.2%
Boards	7.7%	3.1%	0.9%	5.1%	3.8%
Other	9.3%	0.7%	0.1%	1.2%	2.0%
Total	100.0%	100.0%	100.0%	100.0%	100.0%

* D.L.: Dimension Lumber

Market for Output	Coast	Interior Total	Northern Interior	Southern Interior	Province
United States	35.4%	71.4%	66.8%	75.9%	65.6%
Canada	25.5%	22.8%	26.7%	19.0%	23.2%
Japan	28.6%	5.4%	6.1%	4.8%	9.1%
Other	10.5%	0.4%	0.5%	0.3%	2.0%
Total	100.0%	100.0%	100.0%	100.0%	100.0%

Input Characteristics

Species	Coast	Interior Total	Northern Interior	Southern Interior	Province
SPF	0.0%	89.2%	97.9%	80.9%	71.8%
HemBal ¹	47.0%	2.3%	0.6%	3.9%	11.0%
Cedar	27.6%	1.3%	0.2%	2.3%	6.4%
Douglas Fir/Larch ²	17.8%	6.7%	0.5%	12.7%	8.9%
Deciduous	2.1%	0.0%	0.0%	0.0%	0.4%
Other	5.4%	0.5%	0.8%	0.3%	1.5%
Total	100.0%	100.0%	100.0%	100.0%	100.0%

1. Interior % is Hemlock

2. Coast % is Douglas Fir

Input Harvest Source	Coast	Interior Total	Northern Interior	Southern Interior	Province
Own Crown Tenure	59.0%	60.1%	57.5%	62.5%	59.9%
Own Private Land	5.7%	1.1%	0.0%	2.1%	1.8%
Purchased/Traded logs	35.3%	38.9%	42.5%	35.5%	38.3%
Total	100.0%	100.0%	100.0%	100.0%	100.0%

Related References

B.C. Competition Council, www.bccompetitioncouncil.gov.bc.ca
- Wood Products Advisory Committee Report to the Council, March 2006.
- Pulp and Paper Industry Advisory Committee Report, January 2006.

Industry Canada, Strategies website,
strategis.ic.gc.ca/sc_ecnmy/sio/homepage.html

Natural Resources Canada, "The Atlas of Canada", available on the Internet at:
<http://atlas.gc.ca/site/english/maps/environment/forest/useforest/sawmills>

Pulp and Paper Product Council, www.pppc.org

Resource Information Systems Inc. (RISI), www.risiinfo.com

Spelter, Henry ; Alderman, Matthew, "Profile 2005 : softwood sawmills in the United States and Canada", 2005, Research Paper FPL-RP-630. Madison, WI: U.S. Department of Agriculture, Forest Service, Forest Products Laboratory. www.treesearch.fs.fed.us/pubs/21128

CHIP MILLS

(Listed Alphabetically)

Only mills that produce wood chips as a primary product are listed in this section.

Notes:

1. Measurement units are in thousands of bone dry units (000 BDUs).
2. Estimated annual capacity is based on a standardized operation of 240 days per year, two 8 hour shifts per day. Actual mill operations may vary from this schedule.

CHIP MILLS - 2005

Mill Number	Company	Location of Mill	Forest Region	Forest District	Estimated Annual Capacity (000s of BDUs)
446	Campbell River Fibre Ltd.	Campbell River	Coast	Campbell River	112
924	Chips Ahoy Fibre Supply	Mission Deerholm/+1A6	Coast	Chilliwack	48
345	DCT Chambers Trucking Ltd.	Chemainus Ind. Park	Coast	South Island	218
356	East Fraser Fibre Co Ltd.	Mackenzie	Northern Interior	Mackenzie	240
538	Fraser Pulp Chips Ltd.	Surrey	Coast	Chilliwack	20
409	Howe Sound Pulp & Paper Ltd.	Vancouver	Coast	Chilliwack	300
18	Terminal Forest Products Ltd.	Langdale Dryland Sort	Coast	Sunshine Coast	90
68	Tolko Industries Ltd.	Armstrong	Southern Interior	Okanagan Shuswap	46
107	Tolko Industries Ltd.	Williams Lake	Southern Interior	Central Cariboo	56
394	Tolko Industries Ltd.	Heffley Creek	Southern Interior	Kamloops	48
113	West Fraser Mills Ltd.	Quesnel	Southern Interior	Quesnel	72
183	West Fraser Mills Ltd.	Terrace	Northern Interior	Kalum	190
405	Western Forest Products Ltd.	Nanaimo	Coast	South Island	326

LOG HOME MILLS

(Listed Alphabetically)

Mills that process logs to manufacture log homes are listed in this section.

A throughput capacity measurement is not as meaningful for log home mills as it is for other types of primary timber processing mills. Therefore, this section does not include estimated annual capacity.

Mill Number	Company	Location of Mill	Forest Region	Forest District
37	Arcadia Log Homes	Surrey	Coast	Chilliwack
190	Artisan Custom Log Construction Ltd.	Ruskin	Coast	Chilliwack
38	Big Foot Manufacturing Inc.	Tappen	Southern Interior	Okanagan Shuswap
39	Big Rock Homes	Clearbrook	Coast	Chilliwack
458	Brian Moore Log Homes Ltd.	Abbotsford	Coast	Chilliwack
697	Caliga Log Homes Ltd.	93 Mile	Southern Interior	100 Mile House
694	Canada's Log People Ltd.	100 Mile House	Southern Interior	100 Mile House
179	Canadian North Log Homes Inc.	Abbotsford	Coast	Chilliwack
260	Canadian Walden Log Homes Ltd.	Sardis	Coast	Chilliwack
208	Canalog Wood Industries Ltd	Cranbrook	Southern Interior	Rocky Mountain
522	Chinook Log Homes Ltd.	Bear Flats, Montney	Northern Interior	Peace
212	Custom Log Homes Ltd.	Salmon Arm	Southern Interior	Okanagan Shuswap
733	Dave Ohrling Log Homes	Lone Butte	Southern Interior	100 Mile House
700	Durfeld Log Construction Ltd.	Whistler	Coast	Squamish
275	Granberg Construction Ltd.	Kamloops	Southern Interior	Kamloops
46	Hamill Creek Timberwrights	Meadow Creek	Southern Interior	Kootenay Lake
913	High Mountain Log Homes	Clinton	Southern Interior	100 Mile House
216	Ideal Export Log Homes Ltd.	Salmon Arm	Southern Interior	Okanagan Shuswap
524	Japan - Canadian Log Ark Ltd.	Maple Ridge	Coast	Chilliwack
218	Maurer Construction Ltd.	Penticton	Southern Interior	Okanagan Shuswap
391	Morgan Log Homes Ltd.	Hope	Coast	Chilliwack
49	Neville Log Homes Corporation	Kamloops	Southern Interior	Kamloops
230	Nicola Log Works Ltd.	Merritt	Southern Interior	Cascades

Mill Number	Company	Location of Mill	Forest Region	Forest District
291	North American Log Crafters Ltd.	Celista	Southern Interior	Okanagan Shuswap
379	Old Yale Log Homes Ltd.	Sardis	Coast	Chilliwack
52	Original Log Homes Ltd.	100 Mile House	Southern Interior	100 Mile House
692	Pacific Log Homes Ltd.	Lone Butte	Southern Interior	100 Mile House
276	Patrick Log Homes Ltd.	Kamloops	Southern Interior	Kamloops
474	Pioneer Log Homes Ltd.	Williams Lake	Southern Interior	Central Cariboo
223	Radomske Log Homes Ltd	Kelowna	Southern Interior	Okanagan Shuswap
225	Rasmussen Log Homes Ltd.	Okanagan Falls	Southern Interior	Okanagan Shuswap
473	Reko Log Homes Ltd.	Quesnel	Southern Interior	Quesnel
57	Roundwood Log Homes Ltd.	Prince George	Northern Interior	Prince George
693	Sitka Log Homes Ltd.	100 Mile House	Southern Interior	100 Mile House
509	Ski Lumber Ltd.	Valemount	Southern Interior	Headwaters
58	Sperlich Log Construction Inc	Enderby	Southern Interior	Okanagan Shuswap
695	Superior Log Homes Ltd.	93 Mile	Southern Interior	100 Mile House
423	Surelog Homes Ltd.	Tappen	Southern Interior	Okanagan Shuswap
602	T.L. Timber Ltd.	Cawston	Southern Interior	Okanagan Shuswap
59	Tall Timber Log Builders	Abbotsford	Coast	Chilliwack
60	Top Notch Log Construction	Victoria	Coast	South Island
245	Traditional Log Homes Ltd.	Salmon Arm	Southern Interior	Okanagan Shuswap
63	West Coast Log Homes	Gibsons	Coast	Sunshine Coast
267	White Valley Log Homes Ltd.	Cherryville	Southern Interior	Okanagan Shuswap
698	Wildwood Forest Products Ltd.	Williams Lake	Southern Interior	Central Cariboo

LUMBER MILLS

(Listed Alphabetically)

Mills producing lumber are reported in the following 2 sections:

- a) Mills that have estimated annual capacity of more than 10 million board feet of lumber.
- b) Mills that have estimated annual capacity of less than 10 million board feet of lumber.

Notes:

- 1. Measurement units are in millions of board feet.
- 2. Estimated annual capacity is based on a standardized operation of 240 days per year, two 8 hour shifts per day. Actual mill operations may vary from this schedule.

THE FOLLOWING MILLS HAD CAPACITY OF MORE THAN 10 MILLION BOARD FEET OF LUMBER IN 2005

Mill Number	Company	Location of Mill	Forest Region	Forest District	Estimated Annual Capacity (millions of board feet)
9	A J Forest Products Ltd.	Brackendale	Coast	Squamish	12
5	Abfam Enterprises Ltd.	Port Clements	Coast	Queen Charlotte Islands	19
129	Abitibi-Consolidated Company of Canada	Mackenzie	Northern Interior	Mackenzie	178
128	Abitibi-Consolidated Company of Canada	Mackenzie	Northern Interior	Mackenzie	249
8	Andersen Pacific Forest Products Ltd	Ruskin	Coast	Chilliwack	16
137	Apollo Forest Products Ltd.	Fort St James	Northern Interior	Fort St. James	127
207	Ardeu Wood Products Ltd.	Merritt	Southern Interior	Cascades	65
498	Aspen Planers Ltd.	Merritt	Southern Interior	Cascades	173
917	Burns Lake Community Forest	Burns Lake	Northern Interior	Nadina	17
252	C & C Wood Products Ltd.	Quesnel	Southern Interior	Quesnel	28
121	Canadian Forest Products Ltd.	Fort Nelson	Northern Interior	Fort Nelson	101
97	Canadian Forest Products Ltd.	Prince George	Northern Interior	Prince George	140
90	Canadian Forest Products Ltd.	Radium Hot Sprgs	Southern Interior	Rocky Mountain	151
64	Canadian Forest Products Ltd.	Vavenby	Southern Interior	Headwaters	165
160	Canadian Forest Products Ltd.	Bear Lake	Northern Interior	Prince George	182
122	Canadian Forest Products Ltd.	Fort St John	Northern Interior	Peace	207
166	Canadian Forest Products Ltd.	Prince George	Northern Interior	Prince George	224
127	Canadian Forest Products Ltd.	Chetwynd	Northern Interior	Peace	227
153	Canadian Forest Products Ltd.	Prince George	Northern Interior	Prince George	257
110	Canadian Forest Products Ltd.	Quesnel	Southern Interior	Quesnel	264
135	Canadian Forest Products Ltd.	Isle Pierre	Northern Interior	Prince George	264
140	Canadian Forest Products Ltd.	Engen	Northern Interior	Vanderhoof	347
130	Canadian Forest Products Ltd.	Mackenzie	Northern Interior	Mackenzie	461
193	Canadian Forest Products Ltd.	Houston	Northern Interior	Nadina	480
150	Carrier Lumber Ltd.	Prince George	Northern Interior	Prince George	192

THE FOLLOWING MILLS HAD CAPACITY OF MORE THAN 10 MILLION BOARD FEET OF LUMBER IN 2005

Mill Number	Company	Location of Mill	Forest Region	Forest District	Estimated Annual Capacity (millions of board feet)
298	Cascadia Forest Products	Delta	Coast	Chilliwack	53
392	Cascadia Forest Products	Port Alberni	Coast	South Island	69
393	Cascadia Forest Products	Chemainus	Coast	South Island	84
488	Cascadia Forest Products	Nanaimo	Coast	South Island	141
528	Cascadia Forest Products	Port Alberni	Coast	South Island	167
389	Cascadia Forest Products	New Westminster	Coast	Chilliwack	177
737	Cheslatta Forest Products Ltd.	Ootsa Lake	Northern Interior	Nadina	96
377	Coulson Manufacturing Ltd	Port Alberni	Coast	South Island	48
181	Decker Lake Forest Products Ltd.	Burns Lake	Northern Interior	Nadina	72
326	Delta Cedar Products Ltd.	Delta	Coast	Chilliwack	48
45	Downie Timber Ltd.	Revelstoke	Southern Interior	Columbia	95
158	Dunkley Lumber Ltd.	Strathnaver	Northern Interior	Prince George	492
301	Errington Cedar Products Ltd.	Errington	Coast	South Island	19
12	Federated Co-op Ltd.	Canoe	Southern Interior	Okanagan Shuswap	168
714	Franklin Forest Products Ltd.	Port Alberni	Coast	South Island	31
538	Fraser Pulp Chips Ltd.	Surrey	Coast	Chilliwack	25
86	Galloway Lumber Co. Ltd.	Galloway	Southern Interior	Rocky Mountain	60
66	Gilbert Smith For Prod Ltd.	Barriere	Southern Interior	Kamloops	39
537	Goldwood Industries Ltd.	Richmond	Coast	Chilliwack	58
14	Gorman Bros Lumber Ltd.	Westbank	Southern Interior	Okanagan Shuswap	130
172	Hauer Bros. Lumber Ltd.	Tete Jaune Cache	Southern Interior	Headwaters	17
530	Houston Forest Products Co.	Houston	Northern Interior	Nadina	312
361	International Forest Products Ltd.	Surrey	Coast	Chilliwack	109
283	International Forest Products Ltd.	Delta	Coast	Chilliwack	146
297	International Forest Products Ltd.	Hammond	Coast	Chilliwack	158

THE FOLLOWING MILLS HAD CAPACITY OF MORE THAN 10 MILLION BOARD FEET OF LUMBER IN 2005

Mill Number	Company	Location of Mill	Forest Region	Forest District	Estimated Annual Capacity (millions of board feet)
70	International Forest Products Ltd.	Adams Lake	Southern Interior	Kamloops	180
461	International Forest Products Ltd.	New Westminster	Coast	Chilliwack	192
88	J H Huscroft Ltd.	Erickson	Southern Interior	Kootenay Lake	34
100	J.S. Jones	Surrey	Coast	Chilliwack	104
512	Jemico Enterprises Ltd.	Chemainus	Coast	South Island	22
47	Joe Kozek Sawmills Ltd.	Revelstoke	Southern Interior	Columbia	14
50	Kalesnikoff Lumber Co. Ltd.	Thrusms	Southern Interior	Arrow/Boundary	86
558	Kispiox Forest Products Ltd.	South Hazelton	Northern Interior	Skeena Stikine	48
184	Kitwanga Mills Ltd.	Kitwanga	Northern Interior	Skeena Stikine	77
144	L & M Lumber Ltd.	Vanderhoof	Northern Interior	Vanderhoof	240
149	Lakeland Mills Ltd.	Prince George	Northern Interior	Prince George	144
597	Lakeside Timber Ltd.	Tappen	Southern Interior	Okanagan Shuswap	14
255	Larry Buff Sawmills Ltd.	Westwold	Southern Interior	Okanagan Shuswap	14
712	Long Hoh Enterprises Canada Ltd	Qualicum Beach	Coast	South Island	41
116	Lytton Lumber Ltd.	Lytton	Southern Interior	Cascades	60
169	McBride Forest Ind. Ltd.	McBride	Southern Interior	Headwaters	22
603	Meadow Creek Cedar Ltd.	Cooper Creek	Southern Interior	Kootenay Lake	48
11	Microline Veneer and Forest Products Corp	Malakwa	Southern Interior	Okanagan Shuswap	38
403	Mill & Timber Products Ltd.	Surrey	Coast	Chilliwack	62
336	Mill & Timber Products Ltd.	Port Moody	Coast	Chilliwack	77
22	Noble Custom Cut Ltd.	Whonnock	Coast	Chilliwack	38
618	North Enderby Timber Ltd.	Enderby	Southern Interior	Okanagan Shuswap	29
665	North Okanagan Cedar Ltd.	Grindrod	Southern Interior	Okanagan Shuswap	12
173	Northwest Specialty Lumber	Valemount	Southern Interior	Headwaters	124
713	Paragon Ventures Ltd.	Lumby	Southern Interior	Okanagan Shuswap	38

THE FOLLOWING MILLS HAD CAPACITY OF MORE THAN 10 MILLION BOARD FEET OF LUMBER IN 2005

Mill Number	Company	Location of Mill	Forest Region	Forest District	Estimated Annual Capacity (millions of board feet)
732	PG Sort Yard	Prince George	Northern Interior	Prince George	48
30	Pope & Talbot Ltd.	Grand Forks	Southern Interior	Arrow/Boundary	147
31	Pope & Talbot Ltd.	Midway	Southern Interior	Arrow/Boundary	176
62	Pope & Talbot Ltd.	Castlegar	Southern Interior	Arrow/Boundary	246
133	Pope and Talbot Ltd.	Fort St James	Northern Interior	Fort St. James	240
626	Porcupine Wood Products Ltd.	Salmo	Southern Interior	Kootenay Lake	36
454	S & R Sawmills Ltd.	Surrey	Coast	Chilliwack	192
480	Schapol Logging Ltd.	Enderby	Southern Interior	Okanagan Shuswap	12
87	Seel Forest Products Ltd.	Edgewater	Southern Interior	Rocky Mountain	36
740	Sigurdson Bros. Logging Company	Hanceville	Southern Interior	Chilcotin	72
750	Sigurdson Bros. Logging Company	Williams Lake	Southern Interior	Central Cariboo	72
631	Silvermere Forest Prod Ltd.	Ruskin	Coast	Chilliwack	17
55	Springer Creek Forest Products	Slocan	Southern Interior	Arrow/Boundary	106
539	Stag Timber Ltd.	Surrey	Coast	Chilliwack	67
136	Stuart Lake Lumber Co. Ltd.	Fort St James	Northern Interior	Fort St. James	105
602	T.L. Timber Ltd.	Cawston	Southern Interior	Okanagan Shuswap	14
79	Tembec Industries Ltd.	Canal Flats	Southern Interior	Rocky Mountain	173
82	Tembec Industries Ltd.	Elko	Southern Interior	Rocky Mountain	197
540	Terminal Forest Products Ltd.	Richmond	Coast	Chilliwack	175
396	Terminal Forest Products Ltd.	Vancouver	Coast	Chilliwack	204
182	Terrace Lumber Company Ltd.	Terrace	Northern Interior	Kalum	132
330	TimberWest Forest Ltd.	Campbell River	Coast	Campbell River	118
35	Tolko Industries Ltd.	Lumby	Southern Interior	Okanagan Shuswap	14
107	Tolko Industries Ltd.	Williams Lake	Southern Interior	Central Cariboo	103

THE FOLLOWING MILLS HAD CAPACITY OF MORE THAN 10 MILLION BOARD FEET OF LUMBER IN 2005

Mill Number	Company	Location of Mill	Forest Region	Forest District	Estimated Annual Capacity (millions of board feet)
98	Tolko Industries Ltd.	Quesnel	Southern Interior	Quesnel	130
25	Tolko Industries Ltd.	Merritt	Southern Interior	Cascades	132
67	Tolko Industries Ltd.	Kelowna	Southern Interior	Okanagan Shuswap	144
20	Tolko Industries Ltd.	Lavington	Southern Interior	Okanagan Shuswap	147
68	Tolko Industries Ltd.	Armstrong	Southern Interior	Okanagan Shuswap	216
103	Tolko Industries Ltd.	Williams Lake	Southern Interior	Central Cariboo	240
101	Tolko Industries Ltd.	Williams Lake	Southern Interior	Central Cariboo	293
453	Twin River Cedar Products Ltd.	Ruskin	Coast	Chilliwack	43
639	West Chilcotin Forest Products Ltd.	Anahim Lake	Southern Interior	Chilcotin	84
114	West Fraser Mills Ltd.	Williams Lake	Southern Interior	Central Cariboo	149
526	West Fraser Mills Ltd.	Quesnel	Southern Interior	Quesnel	151
183	West Fraser Mills Ltd.	Terrace	Northern Interior	Kalum	168
214	West Fraser Mills Ltd.	Clinton	Southern Interior	100 Mile House	192
532	West Fraser Mills Ltd.	LeJac	Northern Interior	Vanderhoof	222
191	West Fraser Mills Ltd.	Smithers	Northern Interior	Skeena Stikine	228
95	West Fraser Mills Ltd.	100 Mile House	Southern Interior	100 Mile House	237
552	West Fraser Mills Ltd.	Chetwynd	Northern Interior	Peace	252
213	West Fraser Mills Ltd.	Burns Lake	Northern Interior	Nadina	260
113	West Fraser Mills Ltd.	Quesnel	Southern Interior	Quesnel	264
442	Western Forest Products Ltd.	Ladysmith	Coast	South Island	124
376	Western Forest Products Ltd.	Ladysmith	Coast	South Island	127
320	Western Forest Products Ltd.	Cowichan Bay	Coast	South Island	144
531	Western Forest Products Ltd.	Nanaimo	Coast	South Island	149
546	Western Forest Products Ltd.	Duke Point	Coast	South Island	160
436	Western Forest Products Ltd.	Vancouver	Coast	Chilliwack	168

THE FOLLOWING MILLS HAD CAPACITY OF MORE THAN 10 MILLION BOARD FEET OF LUMBER IN 2005

Mill Number	Company	Location of Mill	Forest Region	Forest District	Estimated Annual Capacity (millions of board feet)
74	Weyerhaeuser Company Ltd.	Mission Flats	Southern Interior	Kamloops	128
27	Weyerhaeuser Company Ltd.	Okanagan Falls	Southern Interior	Okanagan Shuswap	159
29	Weyerhaeuser Company Ltd.	Princeton	Southern Interior	Cascades	162
672	Winthro Contracting Ltd	Prince George	Northern Interior	Prince George	29
162	Winton Global	Bear Lake	Northern Interior	Prince George	264
93	Wynndel Box & Lumber Co. Ltd.	Wynndel	Southern Interior	Kootenay Lake	72

THE FOLLOWING MILLS HAD CAPACITY OF LESS THAN 10 MILLION BOARD FEET OF LUMBER IN 2005

Mill Number	Company	Location of Mill	Forest Region	Forest District	Estimated Annual Capacity (millions of board feet)
715	100 Mile Wood Products	100 Mile House	Southern Interior	100 Mile House	2.9
7	Adams Lake Development Corporation	Squilax	Southern Interior	Kamloops	4.8
19	Albion Alder and Maple Co.	Maple Ridge	Coast	Chilliwack	2.4
10	BC Custom Timber Products Ltd.	Vanderhoof	Northern Interior	Vanderhoof	7.2
643	Bear Lumber Ltd.	Cranbrook	Southern Interior	Rocky Mountain	4.8
445	Beaver Forest Products Ltd	Campbell River	Coast	Campbell River	2.4
905	Blacktail Enterprises	Black Creek	Coast	Campbell River	0.7
444	C.V. Cedar Sales Ltd	Courtenay	Coast	Campbell River	0.1
16	Cascades West Forest Products Inc.	Hatzic	Coast	Chilliwack	4.8
738	Chalwood Forest Products LTD.	Port Alberni	Coast	South Island	7.2
452	Chimney Creek Lumber Co Ltd.	Williams Lake	Southern Interior	Central Cariboo	2.4
684	Corwood Timber Products Ltd.	McBride	Southern Interior	Headwaters	0.7
742	Corwood Timber Products Ltd.	Houston	Northern Interior	Nadina	6.6
73	Dale Arden Log Hauling Ltd.	Sooke	Coast	South Island	2.4
719	Dale Edwards	Ucluelet	Coast	South Island	0.5
741	Dove Creek Timber Corp.	Courtenay	Coast	Campbell River	9.6
26	Edge Grain Cedar	Maple Ridge	Coast	Chilliwack	0.5
717	Edgegrain	Cambell River	Coast	North Island - Central Coast	1.0
734	Enid Lake Logging Ltd.	Invermere	Southern Interior	Rocky Mountain	1.9
319	Fu So Enterprises Ltd.	Surrey	Coast	Chilliwack	9.6
679	G. W. Milling Ltd.	Malcolm Island	Coast	North Island - Central Coast	1.4
32	Gibbs Custom Sawmill Ltd.	McBride	Southern Interior	Headwaters	1.2
567	Green Forest Products Ltd.	Merville	Coast	Campbell River	0.7
735	Greg Williams	Sointula	Coast	North Island - Central Coast	1.0
730	Hart Creek Forest Products	Courtenay	Coast	Campbell River	1.0

THE FOLLOWING MILLS HAD CAPACITY OF LESS THAN 10 MILLION BOARD FEET OF LUMBER IN 2005

Mill Number	Company	Location of Mill	Forest Region	Forest District	Estimated Annual Capacity (millions of board feet)
705	Heartwood Ventures	Cumberland	Coast	Campbell River	0.5
518	Herridge Trucking and Sawmilling Ltd	Nakusp	Southern Interior	Arrow/Boundary	7.2
286	Hilmoe Forest Products Ltd.	Rock Creek	Southern Interior	Arrow/Boundary	9.1
708	Island Pacific Wood Products	Tahsis	Coast	Campbell River	5.7
3	J.I.L. Wood Products Ltd	Kamloops	Southern Interior	Kamloops	7.2
743	John Salo	Sointula	Coast	North Island - Central Coast	0.2
247	Jones Ties and Poles (1978) Ltd.	Rosland	Southern Interior	Arrow/Boundary	7.2
281	Karl Beattie Cont Ltd.	Revelstoke	Southern Interior	Columbia	4.8
36	L. Russo Sawmills Ltd.	Kelowna	Southern Interior	Okanagan Shuswap	2.4
702	Linde Bros Lumber Ltd.	Williams Lake	Southern Interior	Central Cariboo	4.8
399	Lois Lumber Ltd.	Lang Bay	Coast	Sunshine Coast	7.2
542	Marsh Bros Lumber and Supply Ltd.	McBride	Southern Interior	Headwaters	7.2
197	McDonald Ranch & Lumber Ltd.	Grasmere	Southern Interior	Rocky Mountain	3.8
194	Mike Gogo Cedar Products	Nanaimo	Coast	South Island	1.9
353	Mill & Timber Products Ltd.	Port Hardy	Coast	North Island - Central Coast	2.4
662	Munson Equipment Ltd.	Chase	Southern Interior	Kamloops	2.1
408	Nagaard Sawmills Ltd.	Port Alberni	Coast	South Island	4.8
199	North Star Planing Co. Ltd.	Athalmer	Southern Interior	Rocky Mountain	3.8
482	Notch Hill Forest Products Ltd.	Sorrento	Southern Interior	Okanagan Shuswap	4.8
711	Port Hardy Merchandising Ltd.	Port Hardy	Coast	North Island - Central Coast	4.8
582	Quadra Island Forest Products Ltd.	Quadra Island	Coast	Campbell River	1.9
698	R. Durfeld Log Construction Ltd.	Williams Lake	Southern Interior	Central Cariboo	2.4
710	Rahn Forest Products Ltd.	Prince George	Northern Interior	Prince George	6.2
744	Rainbow Lumber	Whiskey Creek	Coast	South Island	2.4
716	Rocky Mountain Salvage	Port Hardy	Coast	North Island - Central Coast	1.0

THE FOLLOWING MILLS HAD CAPACITY OF LESS THAN 10 MILLION BOARD FEET OF LUMBER IN 2005

Mill Number	Company	Location of Mill	Forest Region	Forest District	Estimated Annual Capacity (millions of board feet)
271	Rouck Brothers Sawmill Ltd.	Lumby	Southern Interior	Okanagan Shuswap	5.8
907	Saratoga Speedway Mills	Campbell River	Coast	Campbell River	3.8
731	SCG Forest Inc.	Courtenay	Coast	Campbell River	2.4
535	SDN Contracting Ltd/Chemainus Milling Co.	Lk Cowichan Hwy	Coast	South Island	1.4
23	Shannon Lumber	Mission	Coast	Chilliwack	5.8
670	Silva Services Ltd.	Alliford Bay	Coast	Queen Charlotte Islands	0.6
514	Simpcw Development Co Ltd.	Barriere	Southern Interior	Kamloops	4.8
654	Spike Top Cedar Ltd.	Port Hardy	Coast	North Island - Central Coast	1.0
24	Suncoast Lumber and Milling	Sechelt	Coast	Sunshine Coast	9.7
96	Thomson Bros. Lumber Co. Ltd.	Courtenay	Coast	Campbell River	4.8
99	Ukass Logging Ltd.	Wilmer Creek	Southern Interior	Rocky Mountain	3.8
229	Wadlegger Log & Constr. Co.	Raft River	Southern Interior	Headwaters	4.8
347	Ye' Old Dogwood Lumber	Cowichan Lake	Coast	South Island	1.9
623	Yeomans Sawmill Ltd.	Black Creek	Coast	Campbell River	1.0

PELLET MILLS

(Listed Alphabetically)

Mills producing wood pellets for bio-energy are listed in this section.

Notes:

1. Measurement units are in thousands of tonnes.
2. Estimated annual capacity for pellet mills is based on a standardized operation of 345 days per year, three 8 hour shifts per day. Actual operations may vary from these schedules.

PELLET MILLS - 2005

Mill Number	Company	Location of Mill	Forest Region	Forest District	Estimated Annual Capacity ('000s of tonnes)
929	Armstrong Pellet, Inc	Armstrong	Southern Interior	Okanagan Shuswap	46
930	Pacific Bioenergy Corp	Prince George	Northern Interior	Prince George	166
931	Pinnacle Pellet Inc.	Quesnel	Southern Interior	Quesnel	110
934	Pinnacle Pellet Inc.	Houston	Northern Interior	Nadina	70
938	Pinnacle Pellet Inc.	Williams Lake	Southern Interior	Central Cariboo	115
932	Premium Pellet Ltd.	Vanderhoof	Northern Interior	Vanderhoof	120
933	Princeton Co-Generation Corp	Princeton	Southern Interior	Cascades	83

POLE AND POST MILLS

(Listed Alphabetically)

Mills producing poles and posts are listed in this section.

Notes:

1. Measurement units are in thousands of pieces ('000 pcs).
2. Estimated annual capacity is based on a standardized operation of 240 days per year, one 8 hour shift per day, although actual mill operations may vary from this schedule.

UTILITY POLE MILLS - 2005

Mill Number	Company	Location of Mill	Forest Region	Forest District	Estimated Annual Capacity ('000s of pieces)
4	Bell Pole Company	Lumby	Southern Interior	Okanagan Shuswap	36
48	Bell Pole Company	Revelstoke	Southern Interior	Columbia	36
659	Brisco Wood Preservers Ltd.	Brisco	Southern Interior	Rocky Mountain	26
556	Chinook Forest Products Ltd.	Courtenay	Coast	Campbell River	19
433	Cowichan Pole & Piling Ltd.	Duncan	Coast	South Island	23
40	Gorman Bros Lumber Ltd.	Lumby	Southern Interior	Okanagan Shuswap	27
724	Integrated Pole	100 Mile House	Southern Interior	100 Mile House	29
222	Kanaka Creek Pole Company	Haney	Coast	Chilliwack	12
725	O'Brien & Fuerst Logging Ltd.	Port Clements	Coast	Queen Charlotte Islands	22
677	Pacific Inland Pole & Piling Ltd.	Nakusp	Southern Interior	Arrow/Boundary	18
188	Paterson Pole Ltd.	Rossland	Southern Interior	Arrow/Boundary	29
232	Princeton Wood Preservers Ltd	Princeton	Southern Interior	Cascades	24
648	Selkirk Forest Products Ltd.	Galloway	Southern Interior	Rocky Mountain	24
728	Sierra Cascade Resources II L.L.C.	Port McNeill	Coast	North Island - Central Coast	6
729	Sierra Cascade Resources II L.L.C.	Kelsey Bay Division	Coast	Campbell River	6
637	Stella-Jones Inc.	Prince George	Northern Interior	Prince George	30
181	West Fraser Mills Ltd.	Burns Lake	Northern Interior	Nadina	12

OTHER POLE AND POST MILLS - 2005

Mill Number	Company	Location of Mill	Product	Forest Region	Forest District	Estimated Annual Capacity ('000s of pieces)
498	Aspen Planers Ltd.	Merritt	PST	Southern Interior	Cascades	960
556	Chinook Forest Products Ltd.	Courtenay	PST	Coast	Campbell River	5
117	Continental Pole Ltd.	Pemberton	PLE	Coast	Squamish	12
279	J. R. Blackmore & Sons Ltd.	Lumberton	PST	Southern Interior	Rocky Mountain	504
279	J. R. Blackmore & Sons Ltd.	Lumberton	PLE	Southern Interior	Rocky Mountain	168
721	Mego Wood Products (1989) Ltd.	Princeton	PST	Southern Interior	Cascades	720
250	Nicola Post and Rail Co. Ltd.	Merritt	PST	Southern Interior	Cascades	432
677	Pacific Inland Pole & Piling Ltd.	Nakusp	PLE	Southern Interior	Arrow/Boundary	12
739	Panhandle Forest Products	Lumberton	PST	Southern Interior	Rocky Mountain	480
607	Paxton Forest Products Inc.	Monte Lake	PST	Southern Interior	Okanagan Shuswap	508
237	Princeton Post and Rail Co. Ltd.	Princeton	PST	Southern Interior	Cascades	528
237	Princeton Post and Rail Co. Ltd.	Princeton	PLE	Southern Interior	Cascades	144
232	Princeton Wood Preservers Ltd	Princeton	PST	Southern Interior	Cascades	900
619	Quinton Bros.	Caven	PST	Southern Interior	Rocky Mountain	480
343	TRC Cedar Ltd.	McBride	PST	Southern Interior	Headwaters	192

PULP AND PAPER MILLS

(Listed Alphabetically)

Mills producing pulp and paper are listed in this section. For integrated mills, pulp capacity includes pulp that is used internally to produce paper, and pulp that is shipped from the mill site as market pulp.

Notes:

1. Measurement units are in thousands of tonnes.
2. Estimated annual capacity is based on a standardized operation of 345 operating days per year, 24 hours per day. Actual operations may vary from this schedule.

PULP AND PAPER MILLS - 2005

Mill Number	Company	Location of Mill	Product	Forest Region	Forest District	Estimated Annual Capacity (000s of tonnes)
128	Abitibi-Consolidated Company of Canada	Mackenzie	PLP	Northern Interior	Mackenzie	180
128	Abitibi-Consolidated Company of Canada	Mackenzie	PPR	Northern Interior	Mackenzie	180
500	Canadian Forest Products Ltd.	Prince George	PLP	Northern Interior	Prince George	302
500	Canadian Forest Products Ltd.	Prince George	PLP	Northern Interior	Prince George	133
500	Canadian Forest Products Ltd.	Prince George	PPR	Northern Interior	Prince George	137
503	Canadian Forest Products Ltd.	Prince George	PLP	Northern Interior	Prince George	541
335	Canfor Taylor Pulp	Taylor	PLP	Northern Interior	Peace	210
497	Cariboo Pulp & Paper Co. Ltd.	Quesnel	PLP	Southern Interior	Quesnel	329
506	Crown Packaging Ltd.	Burnaby	PPR	Coast	Chilliwack	106
507	Domtar Inc.	Annacis Island	PPR	Coast	Chilliwack	104
496	Eurocan Pulp & Paper Co.	Kitimat	PLP	Northern Interior	Kalum	450
496	Eurocan Pulp & Paper Co.	Kitimat	PPR	Northern Interior	Kalum	466
484	Howe Sound Pulp & Paper Ltd.	Port Mellon	PLP	Coast	Sunshine Coast	450
484	Howe Sound Pulp & Paper Ltd.	Port Mellon	PPR	Coast	Sunshine Coast	198
501	Mercer International Inc.	Castlegar	PLP	Southern Interior	Arrow/Boundary	431
206	NorskeCanada Ltd.	Coquitlam	PLP	Coast	Chilliwack	138
483	NorskeCanada Ltd.	Crofton	PLP	Coast	South Island	676
483	NorskeCanada Ltd.	Crofton	PPR	Coast	South Island	376
330	NorskeCanada Ltd.	Duncan Bay	PLP	Coast	Campbell River	776
330	NorskeCanada Ltd.	Duncan Bay	PPR	Coast	Campbell River	616
486	NorskeCanada Ltd.	Powell River	PLP	Coast	Sunshine Coast	350
486	NorskeCanada Ltd.	Powell River	PPR	Coast	Sunshine Coast	413
487	NorskeCanada Ltd.	Port Alberni	PLP	Coast	South Island	188
487	NorskeCanada Ltd.	Port Alberni	PPR	Coast	South Island	308
488	Pope & Talbot Ltd.	Cedar	PLP	Coast	South Island	407

PULP AND PAPER MILLS - 2005

Mill Number	Company	Location of Mill	Product	Forest Region	Forest District	Estimated Annual Capacity (000s of tonnes)
505	Pope & Talbot Ltd.	Mackenzie	PLP	Northern Interior	Mackenzie	250
489	Port Alice Pulp Mill	Port Alice	PLP	Coast	North Island - Central Coast	162
553	Quesnel River Pulp Co.	Quesnel	PLP	Southern Interior	Quesnel	331
491	Scott Paper Ltd.	New Westminster	PLP	Coast	Chilliwack	31
491	Scott Paper Ltd.	New Westminster	PPR	Coast	Chilliwack	115
1	Tembec Industries Ltd.	Skookumchuk	PLP	Southern Interior	Rocky Mountain	250
205	Tembec Industries Ltd.	Chetwynd	PLP	Northern Interior	Peace	207
490	Western Pulp Ltd. Partnership	Woodfibre	PLP	Coast	Squamish	276
2	Weyerhaeuser Company Ltd.	Kamloops	PLP	Southern Interior	Kamloops	473

SHAKE AND SHINGLE MILLS

(Listed Alphabetically)

Mills that produce shake and shingles are listed in this section.

Notes:

1. Measurement units are in thousands of roofing squares ('000 sq). A roofing square is approximately 100 square feet.
2. Estimated annual capacity is based on a standardized operation of 240 days per year, two 8 hour shifts per day. Actual mill operations may vary from this schedule.

SHAKE AND SHINGLE MILLS - 2005

Mill Number	Company	Location of Mill	Forest Region	Forest District	Estimated Annual Capacity ('000s of squares)
673	Anbrook Industries Ltd.	Pitt Meadows	Coast	Chilliwack	115
285	Associated Cedar Products (1994) Ltd.	Albion	Coast	Chilliwack	23
288	B C F Shake Mill Ltd.	Fanny Bay	Coast	South Island	48
145	Bath Mill Inc.	Abbotsford	Coast	Chilliwack	202
688	Best Quality Cedar Products Ltd	Maple Ridge	Coast	Chilliwack	192
706	Bill Little Contracting Ltd	Campbell River	Coast	Campbell River	5
550	C. J. Cedar Ltd.	Merville	Coast	Campbell River	2
449	Campbell River Shake and Shingle Co Ltd	Campbell River	Coast	Campbell River	5
385	Clearbrook Shake	Abbotsford	Coast	Chilliwack	46
583	Coast Mountain Cedar Products	Mission	Coast	Chilliwack	103
315	Comox Valley Shakes Ltd.	Campbell River	Coast	Campbell River	58
638	Confederate Shake & Shingle Ltd.	Youbou	Coast	South Island	19
69	Copper Mountain Cedar Products	Terrace	Northern Interior	Kalum	9
587	G & R Cedar Ltd.	Matsqui	Coast	Chilliwack	96
399	Goat Lake Forest Products Ltd.	Powell River	Coast	Sunshine Coast	58
671	Graham Island Forest Products Ltd.	Masset	Coast	Queen Charlotte Islands	38
71	Hi-Mark Lumber	Duncan	Coast	South Island	12
72	Imperial Shake Co Ltd	Abbotsford	Coast	Chilliwack	29
321	J & D Shake and Cedar Mill Ltd.	Duncan	Coast	South Island	72
76	K.L.P. Shake and Shingle	Vernon	Southern Interior	Okanagan Shuswap	19
687	Maple Leaf Shake and Shingle Ltd.	Maple Ridge	Coast	Chilliwack	101
402	Meeker Cedar Prod. (1967) Ltd.	Mission	Coast	Chilliwack	312
543	Ocean Blue Cedar Products Ltd.	Campbell River	Coast	Campbell River	115
77	Parker Cedar Custom Mill Products	Pitt Meadows	Coast	Chilliwack	24
460	Port McNeill Shake & Shingles Ltd.	Port McNeill	Coast	North Island - Central Coast	24

SHAKE AND SHINGLE MILLS - 2005

Mill Number	Company	Location of Mill	Forest Region	Forest District	Estimated Annual Capacity ('000s of squares)
266	Premium Cedar Products Ltd.	Ruskin	Coast	Chilliwack	144
599	Prospective Shake Co. Ltd.	Mission	Coast	Chilliwack	86
374	Remco Shake & Shingle Prod Ltd.	Cooper Creek	Southern Interior	Kootenay Lake	19
455	S & W Shake & Shingle Ltd.	Ruskin	Coast	Chilliwack	144
167	Seltic-Sherwen Shake/Shingle Ltd.	Menzies Bay	Coast	Campbell River	12
591	Serpentine Cedar Ltd.	Fort Langley	Coast	Chilliwack	58
612	Silver Creek Premium Products	Mission	Coast	Chilliwack	58
631	Silvermere Forest Prod Ltd.	Ruskin	Coast	Chilliwack	24
902	Taylor Contracting	Zeballos	Coast	North Island - Central Coast	15
106	Teal Cedar Prod (1977) Ltd.	Surrey	Coast	Chilliwack	168
722	Titan Ridge	Port McNeill	Coast	North Island - Central Coast	96
723	Vancouver Island Shake and Shingle	Port McNeill	Coast	North Island - Central Coast	12
691	W. Boyes Shake and Shingle Ltd.	Gateway	Southern Interior	100 Mile House	14
464	Waldun Forest Products Ltd.	Ruskin	Coast	Chilliwack	197

VENEER, PLYWOOD, OSB AND OTHER PANEL MILLS

(Listed Alphabetically)

Mills producing veneer, plywood and other types of panel are listed in this section. For mills that produce both market veneer and plywood, veneer capacity includes market veneer and the veneer that is used within the mill to manufacture plywood. Panel mills that use wood residuals to produce panels or that do not have log-processing capability are also listed in this report.

Notes:

1. Measurement units are in millions of square feet, 3/8" basis (mill. sq. ft., 3/8").
2. Estimated annual capacity for veneer mills is based on a standardized operation of 240 days per year, two 8 hour shifts per day. For plywood mills, estimated annual capacity is based on a standardized operation of 240 days per year, three 8 hour shifts per day. For OSB and other Panel mills, estimated annual capacity is based on a standardized operation of 345 days per year, three 8 hour shifts per day. Actual operations may vary from these schedules.

VENEER, PLYWOOD, OSB AND OTHER PANEL MILLS - 2005

Mill Number	Company	Location of Mill	Product	Forest Region	Forest District	Estimated Annual Capacity (million sq. ft, 3/8" basis)
109	Ainsworth Lumber Co. Ltd.	Savona	PLY	Southern Interior	Kamloops	149
115	Ainsworth Lumber Co. Ltd.	Lillooet	VNR	Southern Interior	Cascades	119
411	Ainsworth Lumber Co. Ltd.	100 Mile House	OSB	Southern Interior	100 Mile House	431
51	Atco Lumber Ltd.	Fruitvale	VNR	Southern Interior	Arrow/Boundary	132
34	B C Veneer Products Ltd	Surrey	VNR	Coast	Chilliwack	24
121	Canadian Forest Products Ltd.	Fort Nelson	VNR	Northern Interior	Fort Nelson	206
121	Canadian Forest Products Ltd.	Fort Nelson	PLY	Northern Interior	Fort Nelson	202
151	Canadian Forest Products Ltd.	Prince George	VNR	Northern Interior	Prince George	122
151	Canadian Forest Products Ltd.	Prince George	PLY	Northern Interior	Prince George	176
459	Canadian Forest Products Ltd.	Fort Nelson	OSB	Northern Interior	Fort Nelson	650
536	Canadian Forest Products Ltd.	New Westminster	PNL	Coast	Chilliwack	58
246	Canpar Industries Ltd	Grand Forks	PNL	Southern Interior	Arrow/Boundary	290
508	CIPA Lumber Co. Ltd.	Annacis Island	VNR	Coast	Chilliwack	230
244	Coastland Wood Ind. Ltd.	Nanaimo	VNR	Coast	South Island	101
12	Federated Co-op Ltd.	Canoe	VNR	Southern Interior	Okanagan Shuswap	144
12	Federated Co-op Ltd.	Canoe	PLY	Southern Interior	Okanagan Shuswap	158
398	Kamloops Forest Products Ltd.	Kamloops	VNR	Southern Interior	Kamloops	64
84	Louisiana Pacific Canada Ltd.	Golden	VNR	Southern Interior	Columbia	125
84	Louisiana Pacific Canada Ltd.	Golden	PLY	Southern Interior	Columbia	141
650	Louisiana Pacific Canada Ltd.	Dawson Creek	OSB	Northern Interior	Peace	390
3	M.V.P. Veneer Inc.	Kamloops	VNR	Southern Interior	Kamloops	7
169	McBride Forest Ind. Ltd.	McBride	VNR	Southern Interior	Headwaters	82
357	Northern Engineering Wood Products Inc.	Smithers	PNL	Northern Interior	Skeena Stikine	91

VENEER, PLYWOOD, OSB AND OTHER PANEL MILLS - 2005

Mill Number	Company	Location of Mill	Product	Forest Region	Forest District	Estimated Annual Capacity (million sq. ft, 3/8" basis)
478	Richmond Plywood Corp. Ltd.	Richmond	VNR	Coast	Chilliwack	173
478	Richmond Plywood Corp. Ltd.	Richmond	PLY	Coast	Chilliwack	187
35	Tolko Industries Ltd.	Lumby	VNR	Southern Interior	Okanagan Shuswap	192
67	Tolko Industries Ltd.	Kelowna	VNR	Southern Interior	Okanagan Shuswap	115
67	Tolko Industries Ltd.	Kelowna	PLY	Southern Interior	Okanagan Shuswap	156
68	Tolko Industries Ltd.	Armstrong	VNR	Southern Interior	Okanagan Shuswap	211
68	Tolko Industries Ltd.	Armstrong	PLY	Southern Interior	Okanagan Shuswap	360
394	Tolko Industries Ltd.	Heffley Creek	VNR	Southern Interior	Kamloops	132
394	Tolko Industries Ltd.	Heffley Creek	PLY	Southern Interior	Kamloops	184
105	West Fraser Mills Ltd.	Williams Lake	VNR	Southern Interior	Central Cariboo	120
105	West Fraser Mills Ltd.	Williams Lake	PLY	Southern Interior	Central Cariboo	188
112	West Fraser Mills Ltd.	Quesnel	PLY	Southern Interior	Quesnel	202
112	West Fraser Mills Ltd.	Quesnel	VNR	Southern Interior	Quesnel	144
113	West Fraser Mills Ltd.	Quesnel	PNL	Southern Interior	Quesnel	279

OTHER PRIMARY PROCESSING MILLS

(Listed Alphabetically)

Mills listed in this section have log processing capability but do not produce any of the previously listed products.

OTHER MILLS - 2005

Mill Number	Company	Location of Mill	Product	Forest Region	Forest District
743	John Salo	Sointula	SSB	Coast	North Island - Central Coast
84	Louisiana Pacific Canada Ltd.	Golden	LVL	Southern Interior	Columbia
511	Timbre Tonewood Ltd.	Parksville	GTR	Coast	South Island

