
Major Primary Timber Processing Facilities In British Columbia

2006



The Best Place on Earth

Ministry of Forests and Range
Economics and Trade Branch



Major Primary Timber Processing Facilities In British Columbia

2006

Economics and Trade Branch
Ministry of Forests and Range
Victoria, B.C.

August 2008

Foreword

This is the 2006 edition of the Ministry of Forests and Range publication of *Major Primary Timber Processing Facilities in British Columbia* and refers to timber processing mills that have primary log processing capability and which operated during 2006. Coverage does not include re-manufacturing plants. Pulp and paper mills, panel plants and pellet mills are included in this report even though some do not have primary log processing capabilities. Where a mill produces more than one product (e.g. lumber and veneer; poles and posts), each operation is listed in the respective sections of the report.

The information was gathered through a survey of individual processing mills. If a mill did not submit a response, mill specific information reported in trade publications, directories and corporate annual reports may have been used. In some cases Ministry of Forests and Range staff provided estimates based on their knowledge of the operation and information reported in previous years.

This year's report includes an analysis section with time series data for capacity, output and input for lumber and veneer mills.

This report is available free of charge on the Ministry of Forests and Range Internet site at:

<http://www.for.gov.bc.ca/het/>

The report is updated annually. Comments, errors or omissions may be sent to one of the following locations:

Economics and Trade Branch
Ministry of Forests and Range
P.O. Box 9514, Station Prov Gov,
Victoria, B.C.
V8W 9C2

Phone (250) 387-8610
FAX (250) 387-5050

E-mail: Forests.EconomicsAndTradeBranchOffice@gov.bc.ca

Acknowledgements

The cooperation of mill personnel who responded to the Ministry of Forests and Range survey is gratefully acknowledged.

The important role played by Ministry of Forests and Range regional and district staff in securing mill responses is also gratefully acknowledged.

Table of Contents

	PAGE
Map of Forest Regions and Districts effective April 1, 2003.....	4
Analysis	
A. Introduction.....	5
B. Wood Fibre Supply and Use in British Columbia	5
C. Time Series Data	
1) Medium and Large Lumber Mills.....	9
2) Veneer Mills	14
3) Pellet Mills	18
Related References	19
List of Mills	
Chip Mills	20
Log Home Mills	22
Lumber Mills	25
Pellet Mills.....	34
Pole and Post Mills	36
Pulp and Paper Mills	39
Shake and Shingle Mills.....	42
Veneer, Plywood, and Other Panel Mills.....	45
Other Primary Processing Mills.....	48

Abbreviations for Products

UTI - Utility Pole	OSB - Oriented Strand Board
PLE - Other Pole	PNL - Other Panel
PST - Fence Post	LVL - Laminated Veneer Lumber
PLP - Pulp	SSB - Shake and Shingle Block
PPR - Paper	
VNR - Veneer	
PLY - Plywood	

Forest Region and District Boundaries - April 1, 2003

RSI · Southern Interior Forest Region (Kamloops)

- DMH · 100 Mile House Forest District (100 Mile House)
- DAB · Arrow Boundary Forest District (Castlegar, Grand Forks, Nakusp)
- DCS · Cascades Forest District (Merritt, Lillooet, Princeton)
- DCC * Central Cariboo Forest District (Williams Lake, Horsefly, Likely)
- DCH · Chilcotin Forest District (Alexis Creek)
- DCO · Columbia Forest District (Revelstoke, Golden)
- DHW · Headwaters Forest District (Clearwater, McBride)
- DKA * Kamloops Forest District (Kamloops)
- DKL * Kootenay Lake Forest District (Nelson)
- DOS * Okanagan Shuswap Forest District (Vernon, Penticton, Salmon Arm)
- DQU · Quesnel Forest District (Quesnel)
- DRM · Rocky Mountain Forest District (Cranbrook, Invermere)

* Denotes BC Timber Sales Location

RNI · Northern Interior Forest Region (Prince George)

- DFN · Fort Nelson Forest District (Fort Nelson)
- DJA · Fort St. James Forest District (Fort St. James)
- DKM * Kalum Forest District (Terrace)
- DMK · Mackenzie Forest District (Mackenzie)
- DND * Nadina Forest District (Burns Lake, Houston)
- DPC * Peace Forest District (Dawson Creek, Fort St. John)
- DPG * Prince George Forest District (Prince George)
- DSS · Skeena Stikine Forest District (Smithers, Dease Lake, Hazelton)
- DVA * Vanderhoof Forest District (Vanderhoof)

RCO · Coast Forest Region (Nanaimo)

- DCR * Campbell River Forest District (Campbell River)
- DCK * Chilliwack Forest District (Chilliwack)
- DNC · North Coast Forest District (Prince Rupert)
- DNI * North Island - Central Coast Forest District (Port McNeill, Hagensborg)
- DQC · Queen Charlotte Islands Forest District (Queen Charlotte City)
- DSI · South Island Forest District (Port Alberni, Duncan)
- DSQ · Squamish Forest District (Squamish)
- DSC · Sunshine Coast Forest District (Powell River, Sechelt)



ANALYSIS

A. Introduction

The Analysis section of the report presents summary statistics derived from the mill survey database, and selected analysis of these statistics. First, fibre supply and use in the province in 2006 is examined through a series of pie charts. The next section presents times series statistics for medium and large lumber and veneer mills.

B. Wood Fibre Supply and Use in British Columbia, 2006

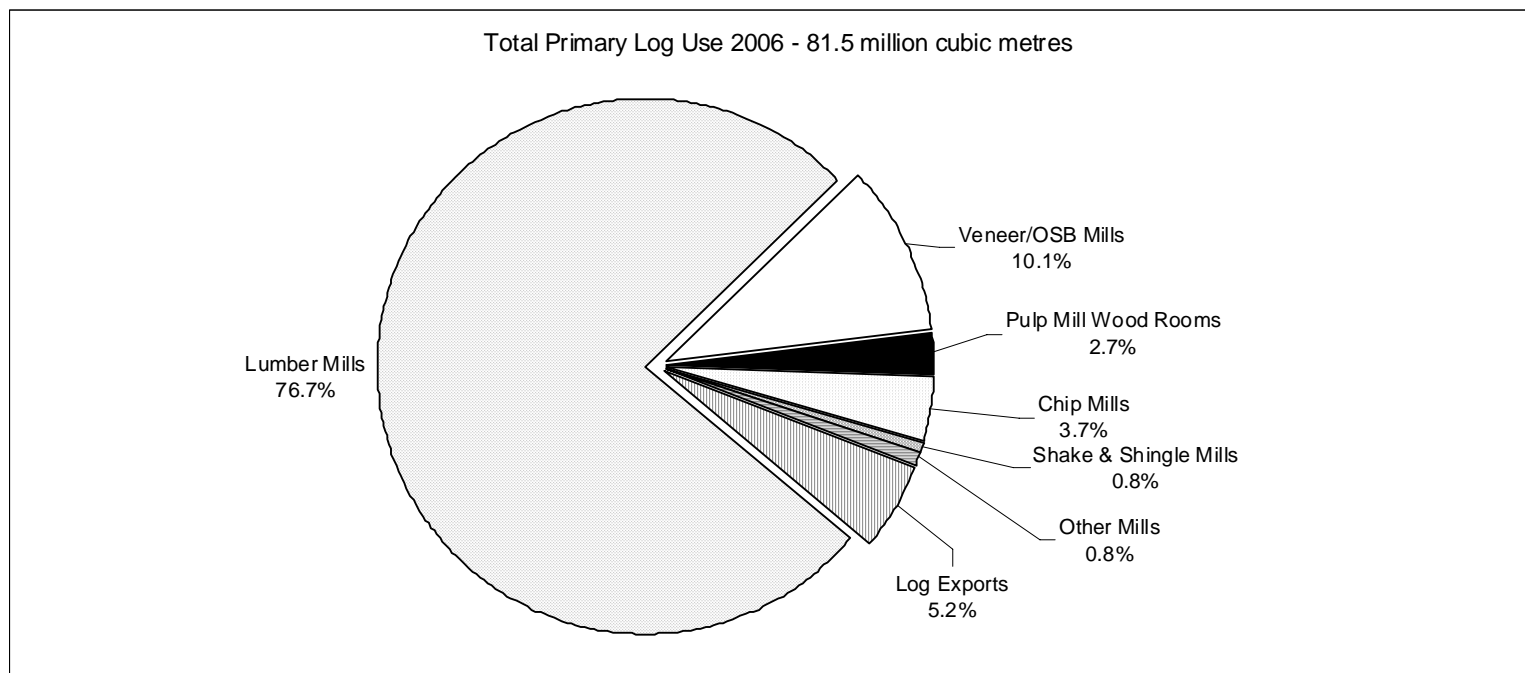
Figure 1 shows estimated log use in British Columbia by mill type. Provincial log input to primary mills decreased by about 2.2 million cubic metres or 2.6% from 2005 levels. Log input decreased by 9.2% on the Coast and 0.2% in the Interior. Lumber mills processed 77% of the total primary log use in 2006. The total log volume used in lumber mills was 2% less than in 2005. The total log volume used in lumber mills decreased by 7.5% on the Coast and 0.7% in the Interior.

Figure 2 estimates product recovery from lumber mills. It shows that 48% of the volume of wood entering lumber mills was converted to lumber, with the remaining 52% being converted to chips, sawdust and shavings.

Figure 3 combines Figures 1 and 2 with a chart showing fibre used by pulp mills and pellet mills. In 2006, 92% of the fibre used by pulp mills was in the form of chips and sawdust obtained from external mills, while 8% was from logs chipped at the pulp mill. Fibre use in pellet mills in 2006 is estimated to be 2.5 million cubic metres of wood in solid weight equivalent, about one tenth of the fibre use by pulp mills in the province.

Figure 1: Estimated British Columbia Primary Log Use - 2006

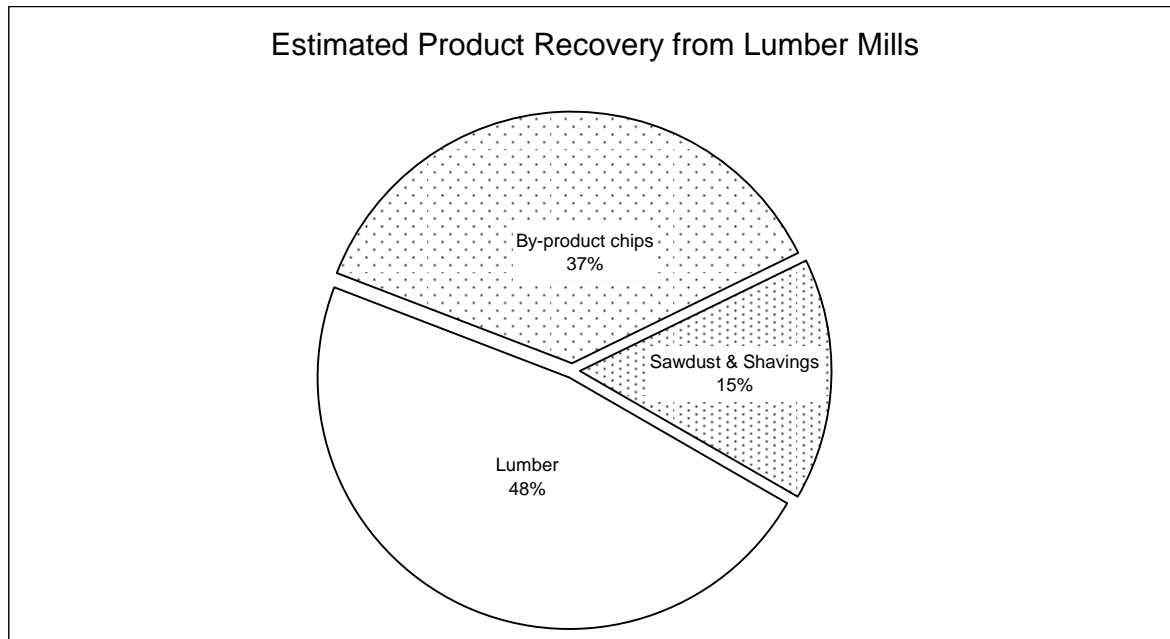
Log Use By:	COAST			INTERIOR			PROVINCE		
	Number of Mills	Estimated Volume Used (000 m ³)	Per Cent	Number of Mills	Estimated Volume Used (000 m ³)	Per Cent	Number of Mills	Estimated Volume Used (000 m ³)	Per Cent
Lumber Mills	68	11,037	53.7%	113	51,542	84.5%	181	62,579	76.7%
Veneer/OSB Mills	4	1,856	9.0%	17	6,409	10.5%	21	8,266	10.1%
Pulp Mill Wood Rooms	9	1,378	6.7%	13	789	1.3%	22	2,168	2.7%
Chip Mills	8	1,624	7.9%	5	1,363	2.2%	13	2,987	3.7%
Shake & Shingle Mills	33	648	3.1%	5	14	0.0%	38	661	0.8%
Other Mills	18	129	0.6%	57	492	0.8%	75	621	0.8%
Log Exports		3,896	18.9%		361	0.6%		4,257	5.2%
Total Primary Log Use	140	20,569	100%	210	60,970	100%	350	81,539	100%
2006 Harvest		21,722			61,792			83,514	
Less Waste and Rejects (estimate)								1,695	
Plus Log Imports								44	
Total Available								81,863	
Difference								325	0.4%



Sources:
 Survey data; Statistics Canada trade data; BC Ministry of Forests and Range log export statistics.

Figure 2: Estimates of Product Recovery from Lumber Mills - 2006

	Units	Coast	Interior	Province
Number of Mills		68	113	181
Log Input	('000 m ³)	11,037	51,542	62,579
Lumber Output				
Lumber Output (nominal measure)	(mfbm)	2,583	14,402	16,985
Lumber Recovery Factor	(mfbm/m ³)	0.234	0.279	0.271
Conversion Factor *	(m ³ /mfbm)	1.835	1.737	1.752
= Actual Volume of Lumber Produced	('000 m ³)	4,740	25,017	29,757
As Per Cent of Log Input	(%)	43%	49%	48%
By Product Chip Output (from Lumber Mills)				
By Product Chip Output	(000 bdu)	1,425	6,977	8,402
By Product Chip Recovery Factor	(bdu/'000 m ³)	129	135	134
Conversion Factor	(m ³ /bdu)	2.62	2.78	2.75
= Volume of Chips Produced	('000 m ³)	3,734	19,396	23,130
As Per Cent of Log Input	(%)	34%	38%	37%
Sawdust and Shavings - Estimated Volume				
As Per Cent of Log Input	(%)	23%	14%	15%

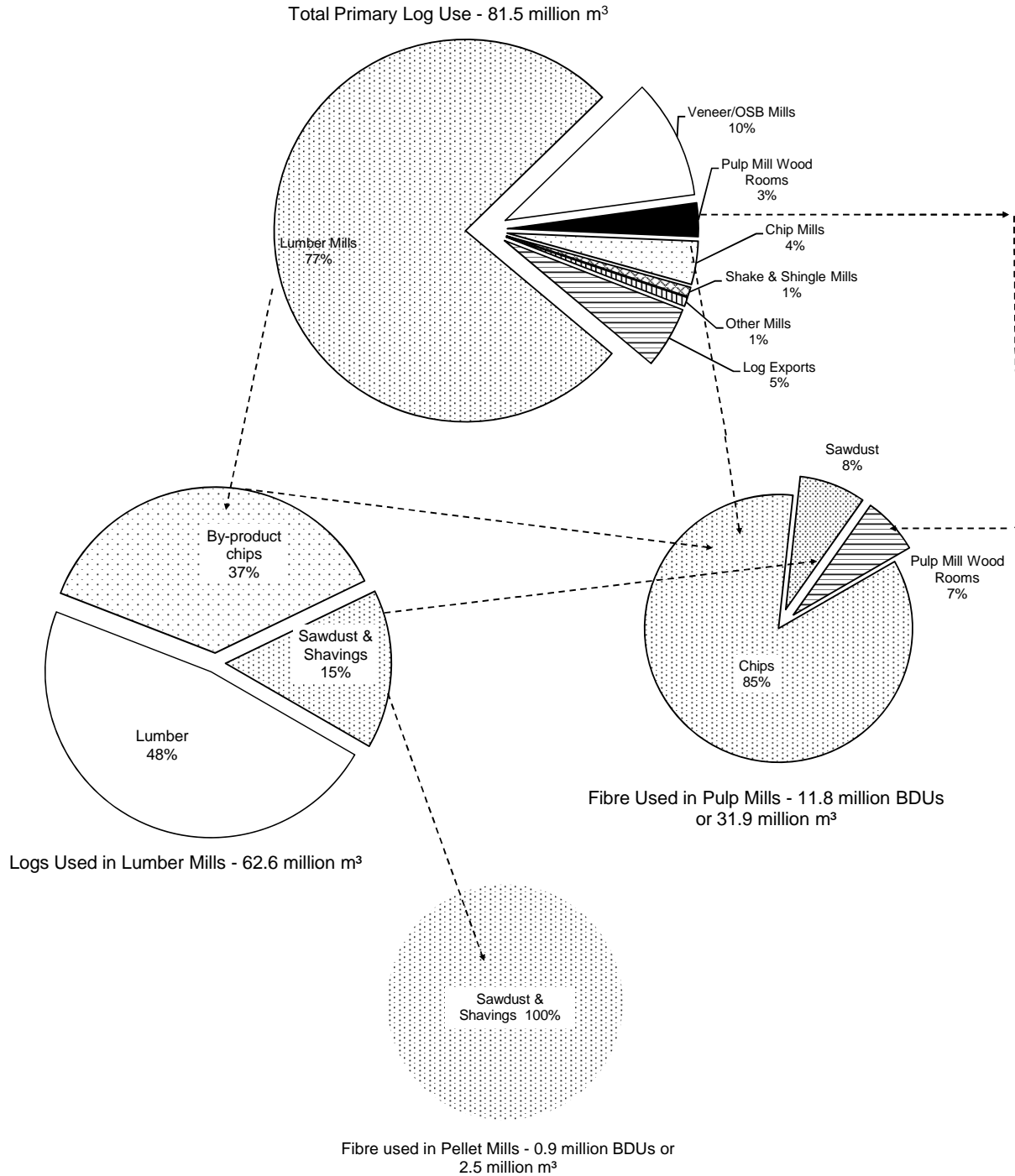


Sources: Survey data and Forintek Canada Corp., "Conversion Factors for the Forest Products Industry in Western Canada", Special Publication No. SP-24R, 1985, Table 21.

Notes:

* This conversion factor (Forintek, page 32) is to convert lumber output in nominal board feet to cubic metres solid wood equivalent. mfbm = thousand board feet; m³ = cubic metres; bdu = bone dry unit = 2400 pounds.

Figure 3: Estimated British Columbia Log and Fibre Use - 2006



Based on the most recent data available at time of writing, we have revised our estimated fibre usage in pulp mills for years 2003-2006. The 2006 information is shown in the pie chart above named Fibre Used in Pulp Mills, while the 2003-2005 figures are listed in the table below.

Year	Total Fibre Usage	Fibre Usage Breakdown		
		Chips	Sawdust	Wood Rooms
2003	11.8 million BDUs or 32.0 million m ³	88%	8%	5%
2004	12.3 million BDUs or 33.3 million m ³	86%	7%	6%
2005	12.2 million BDUs or 32.9 million m ³	86%	8%	6%

C. Time Series Data

1) Medium and Large Lumber Mills

There were 96 lumber mills with capacity over 40 million board feet per year operating in BC in 2006, accounting for about 95% of lumber production¹. Figure 4 shows the distribution of lumber mills by mill size, for the Coast and Interior.

Figure 4: Distribution Of British Columbia Lumber Mills By Size - 2006

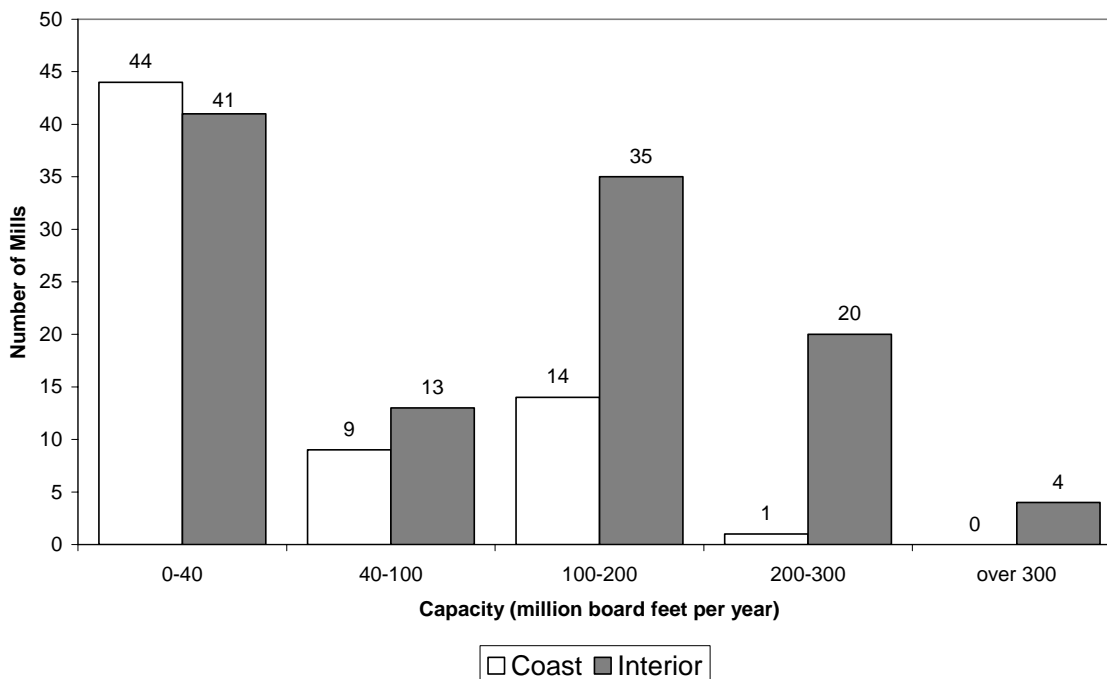


Table 1 shows number of mills, lumber capacity, production, input, and estimated lumber recovery factors for medium and large sized sawmills in British Columbia from 1990 to 2006². The data covers 24 mills on the Coast and 72 in the Interior in 2006.

Figures 5 and 6 show that the number of mills fell over the last 15 years, and the average capacity increased. In 2006, the average capacity was lower than 2005 due to the closure and capacity reduction of some larger than average sawmills.

¹ This publication also reports estimated annual capacity for a large number of small mills: 85 mills with capacity under 40 million board feet in 2006, of which about half had capacity of under 5 million board feet per year.

² The time series data was developed from historical databases from the Ministry of Forests and Range annual mill survey and only covers those mills with annual capacity of 40 million board feet or more.

Figure 7 shows that capacity utilization has fluctuated over time. In the Interior, capacity utilization is higher than on the Coast and has had an upward trend in last few years reaching its highest level in 2006. For the Coast, capacity utilization dropped markedly from 1994 to 1998, has an upward trend since 2001 and its 2006 level was the same as in the mid 1990s.

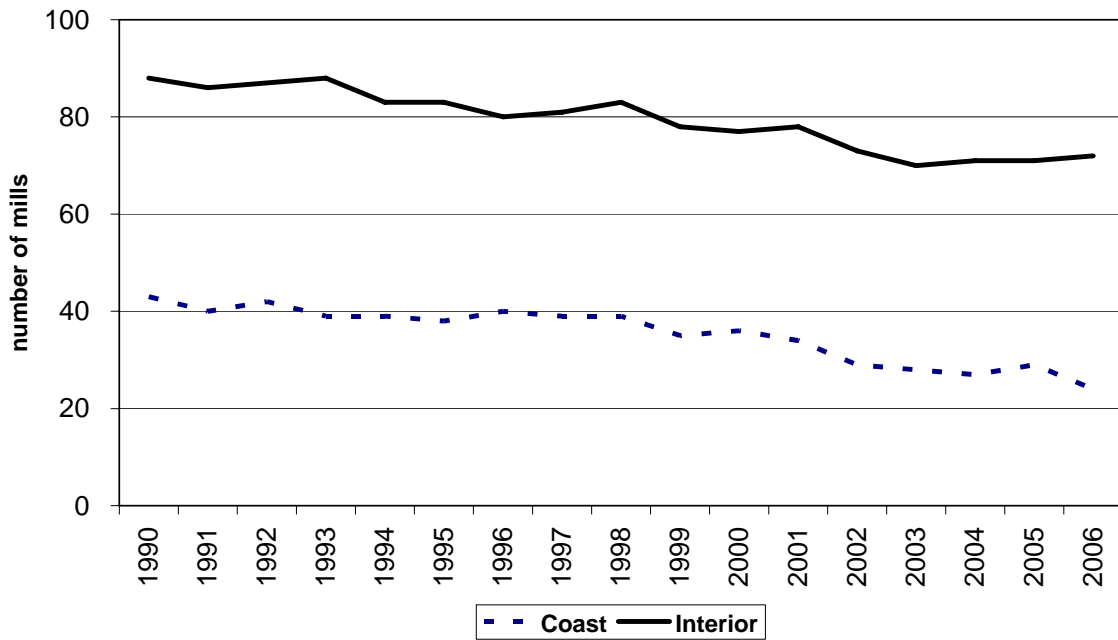
Figure 8 shows that the lumber recovery factor (the volume of lumber that mills get from a cubic metre of log input) has increased over time, especially in the Interior. The lumber recovery factor for the Coast is lower than in the Interior partly because of species differences and the more diverse range of lumber products manufactured. Some industry experts expect the lumber recovery factor for Interior mills to stop increasing over the next several years, and perhaps decrease as mills begin to saw a higher proportion of lower quality beetle killed timber. The Interior lumber recovery factor in 2006 (0.281) was only slightly lower than for 2005 (0.282).

Table 1: British Columbia Lumber Mill Summary Statistics for Medium and Large Sized Mills

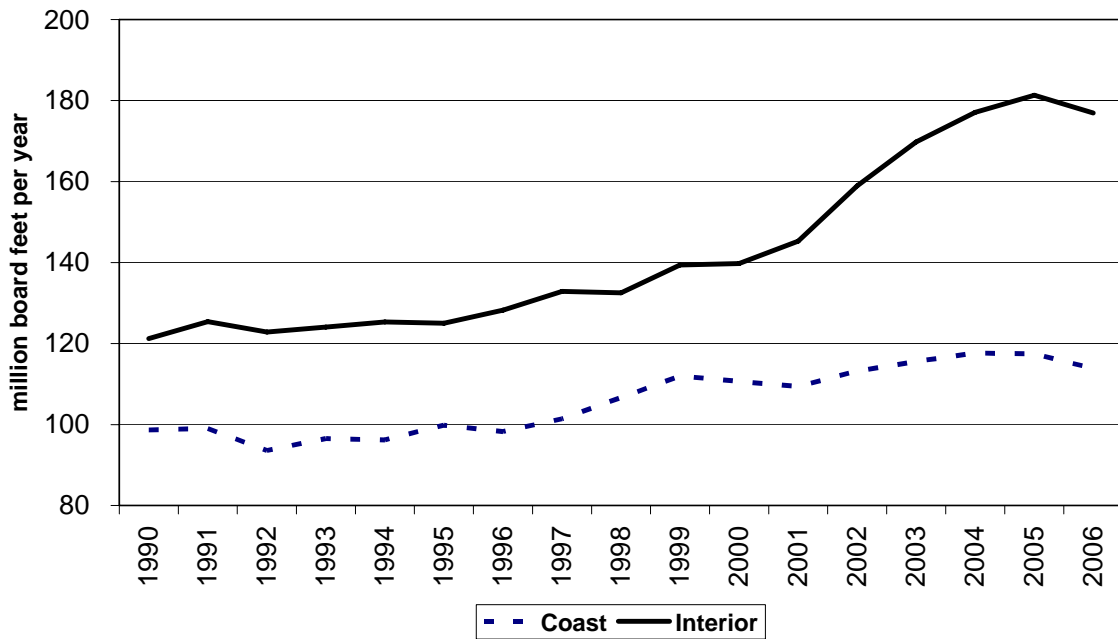
		1990...	1995...	2000	2001	2002	2003	2004	2005	2006	% change 1990-2006
COAST											
Number of Mills		43	38	36	34	29	28	27	29	24	-44%
Total Capacity	billion board feet per year	4.2	3.8	4.0	3.7	3.3	3.2	3.2	3.4	2.7	-36%
Total Output	billion board feet per year	3.8	3.3	3.1	2.5	2.4	2.3	2.6	2.6	2.4	-35%
Total Input	million cubic metres per year	17.1	15.0	13.8	11.3	10.7	10.1	11.3	11.2	10.3	-40%
Average Capacity	million board feet per mill per year	99	100	111	109	113	116	118	117	114	15%
Capacity Utilization	output divided by capacity	89%	88%	77%	67%	74%	72%	81%	76%	89%	1%
Lumber Recovery Factor	'000 board feet per cubic metre	0.220	0.223	0.222	0.222	0.228	0.233	0.229	0.231	0.237	7%
INTERIOR											
Number of Mills		88	83	77	78	73	70	71	71	72	-18%
Total Capacity	billion board feet per year	10.7	10.4	10.8	11.3	11.6	11.9	12.6	12.9	12.7	19%
Total Output	billion board feet per year	10.0	10.0	10.5	10.3	11.8	11.9	13.4	14.3	14.2	43%
Total Input	million cubic metres per year	42.2	40.9	40.0	38.1	43.4	43.1	47.6	50.7	50.6	20%
Average Capacity	million board feet per mill per year	121	125	140	145	159	170	177	181	177	46%
Capacity Utilization	output divided by capacity	93%	96%	98%	90%	102%	100%	107%	111%	112%	19%
Lumber Recovery Factor	'000 board feet per cubic metre	0.236	0.245	0.263	0.269	0.273	0.275	0.281	0.282	0.281	19%
PROVINCE											
Number of Mills		131	121	113	112	102	98	98	100	96	-27%
Total Capacity	billion board feet per year	14.9	14.2	14.7	15.1	14.9	15.1	15.8	16.3	15.5	4%
Total Output	billion board feet per year	13.7	13.3	13.6	12.8	14.3	14.2	16.0	16.9	16.6	21%
Total Input	million cubic metres per year	59.2	55.8	53.8	49.4	54.0	53.1	58.9	61.9	60.8	3%
Average Capacity	million board feet per mill per year	114	117	130	134	146	154	161	163	161	42%
Capacity Utilization	output divided by capacity	92%	94%	92%	85%	96%	94%	101%	104%	108%	17%
Lumber Recovery Factor	'000 board feet per cubic metre	0.232	0.239	0.253	0.258	0.264	0.267	0.271	0.272	0.274	18%

Medium and Large Sized Mills defined as lumber mills with estimated capacity over 40 million board feet per year.
Capacity estimated assuming two 8-hour shifts, 240 days per year.

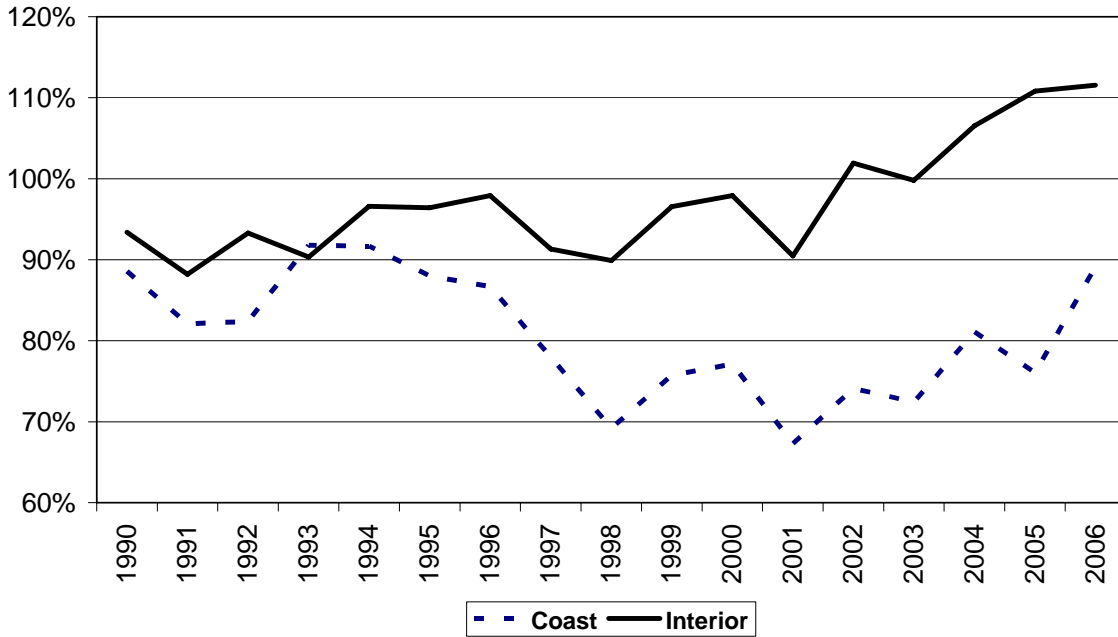
**Figure 5: BC Medium and Large Sized Lumber Mills
Number of Mills**



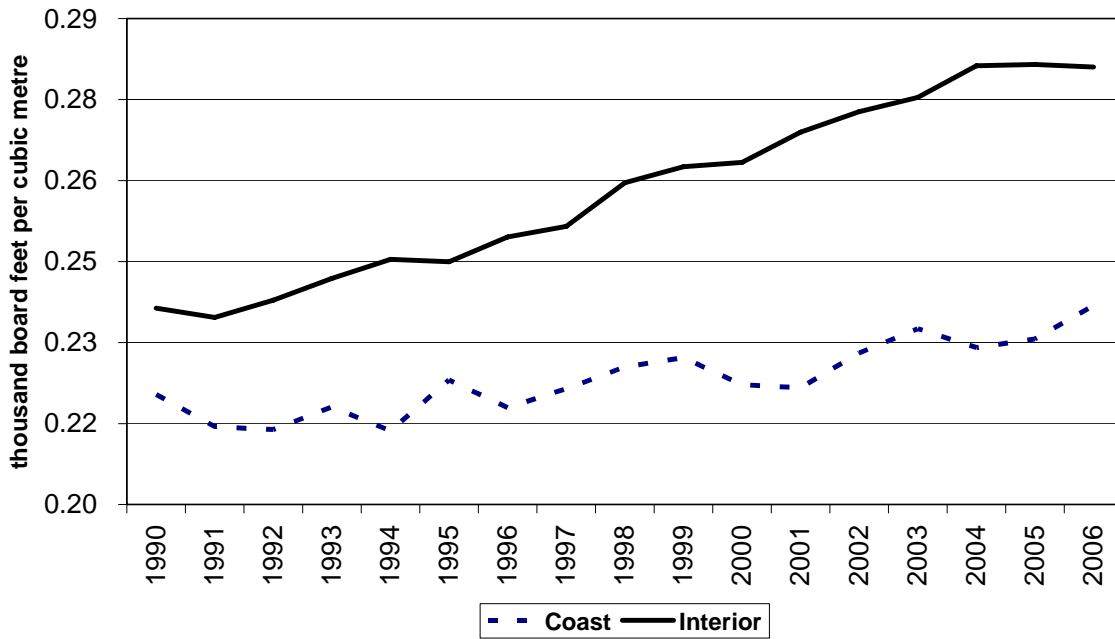
**Figure 6: BC Medium and Large Sized Lumber Mills
Average Capacity**



**Figure 7: BC Medium and Large Sized Lumber Mills
Capacity Utilization**



**Figure 8: BC Medium and Large Sized Lumber Mills
Lumber Recovery Factor**



2) Veneer Mills

Veneer is used as an input in plywood manufacturing as well as an input to other engineered wood products such as laminated veneer lumber. Ten veneer mills have a plywood mill on the same site, whereas 6 mills produce “market veneer” for sale to plywood and other types of mills³.

Table 2 gives a provincial overview of veneer mill statistics for 1990-2006. These statistics show 16 veneer mills operating in 2006, 3 on the Coast and 13 in the Interior. Total veneer capacity grew by about 20% between 1990 and 2006. Output grew by 44% over the same time period as mills steadily increased their capacity utilization.

Figure 9 shows output and log input for veneer mills all decreased in 2006, reflecting the closure of the Kamloops Forest Products Ltd. Veneer mill, while capacity increased slightly. Figure 10 shows that the average size of veneer mills grew steadily over the period. Figure 11 shows a steady increase in capacity utilization as mills shifted from 2 to 3 shifts per day. Figure 12 shows that BC veneer mill’s recovery factor grew over the 1990s, but has remained steady since 2000 at about 580 square feet per cubic metre of log input.

³ These numbers and the time series statistics below do not include very small veneer mills.

Table 2: British Columbia Veneer Mill Summary Statistics

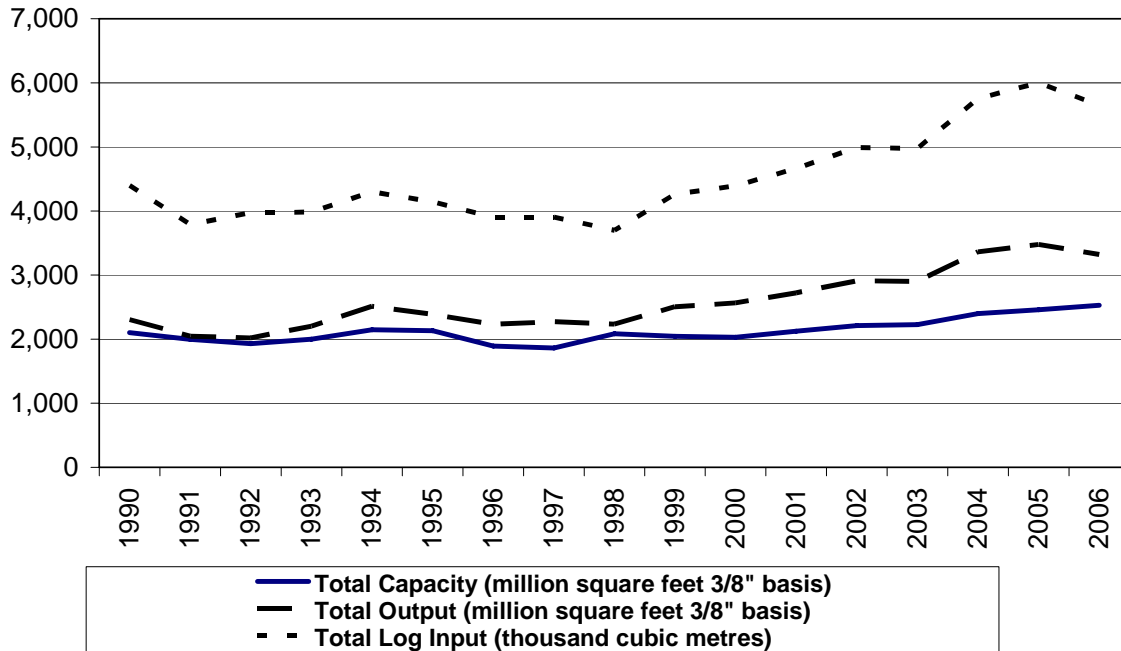
	1990...	1995...	2000	2001	2002	2003	2004	2005	2006	% change 1990-2006
Number of Mills	20	17	16	16	16	16	16	16	16	-20%
Total Capacity (million square feet 3/8" basis)	2,102	2,131	2,030	2,124	2,212	2,228	2,400	2,459	2,529	20%
Total Output (million square feet 3/8" basis)	2,306	2,387	2,567	2,724	2,911	2,901	3,362	3,477	3,321	44%
Total Log Input (thousand cubic metres)	4,398	4,143	4,390	4,665	4,989	4,976	5,754	6,001	5,652	29%
Average Capacity (million square feet per mill)	105	125	127	133	138	139	150	154	158	50%
Average Log Input (thousand cubic metres per mill)	220	244	274	292	312	311	360	375	353	61%
Capacity Utilization (output divided by capacity)	110%	112%	126%	128%	132%	130%	140%	141%	131%	20%
Recovery Factor (square feet per cubic metre log input)	524	576	585	584	584	583	584	579	588	12%

Source: Major Primary Timber Processing Facilities in British Columbia, internal database, various years

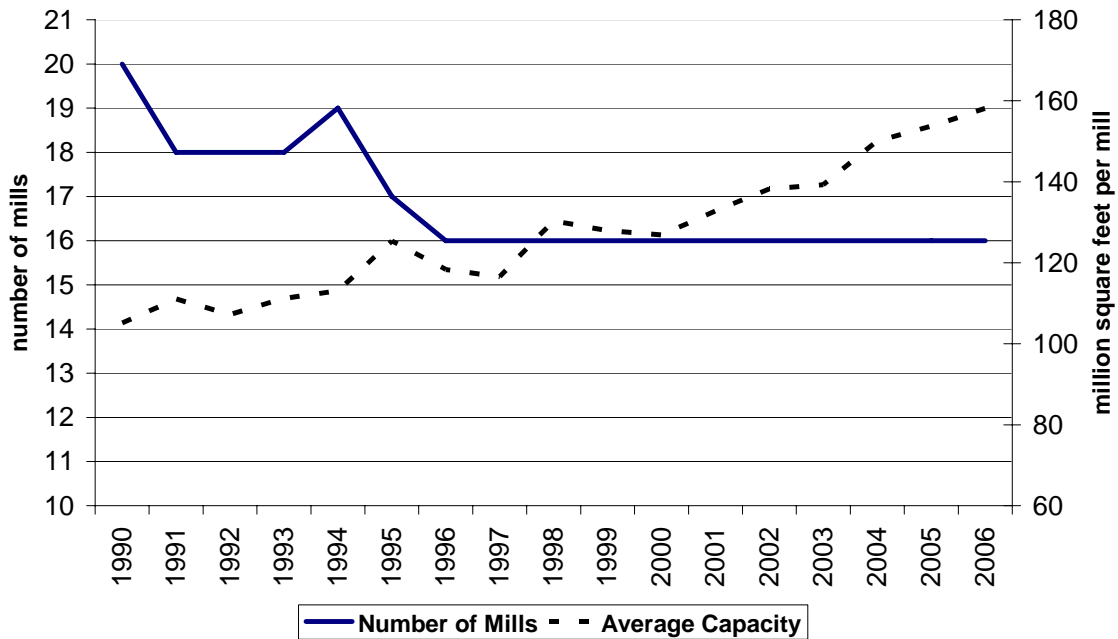
Output Capacity is estimated based on two 8 hour shifts, 240 days per year

Very small mills using an average of less than 25,000 cubic metres of logs per year are not included in these statistics

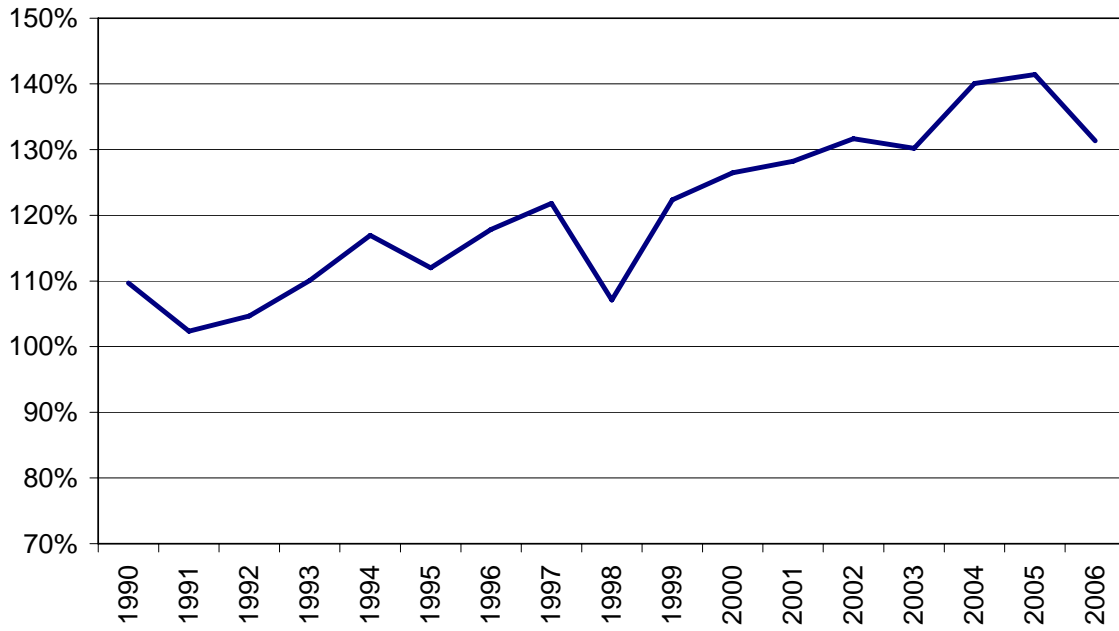
**Figure 9: BC Veneer Mills
Capacity, Output and Log Input**



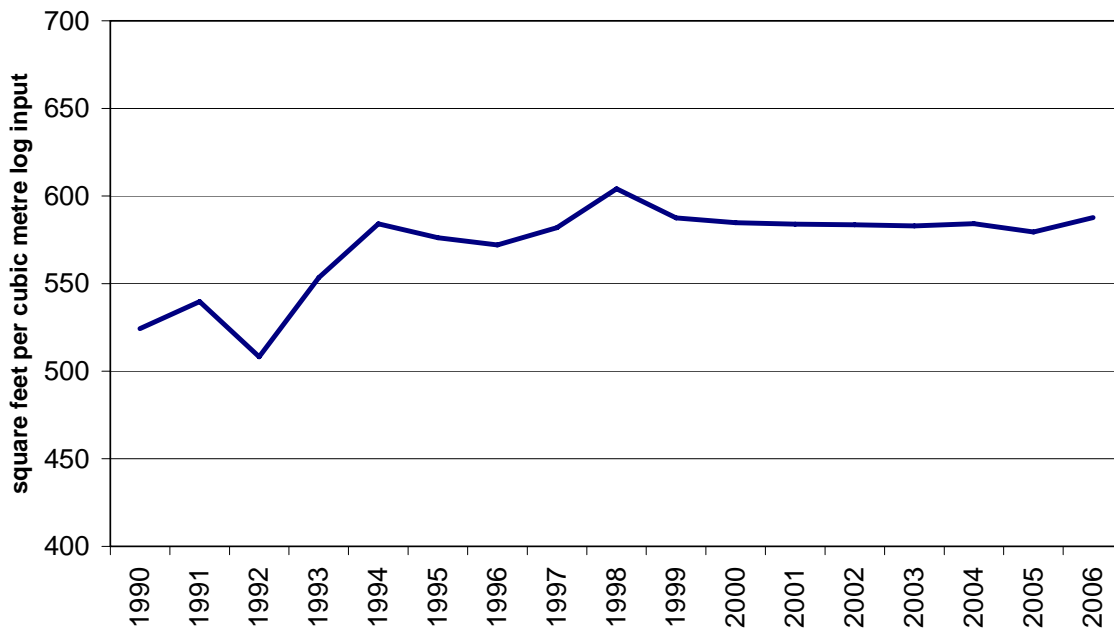
**Figure 10: BC Veneer Mills
Number of Mills and Average Capacity**



**Figure 11: BC Veneer Mills
Capacity Utilization**



**Figure 12: BC Veneer Mills
Recovery Factor**



3) Pellet Mills

Wood pellets are primarily used as wood fuel and are usually made from compacted sawdust. Pellets are produced from the byproducts of sawmilling and other wood transformation activities. Much of the pellet production from British Columbia is shipped to European countries.

This report shows 8 pellet mills operated in BC in 2006. It is estimated that the total capacity for these mills was 810,000 tonnes of pellets per year based on an operating schedule of three 8-hour shifts per day, 345 days per year. On average, mills ran at about 90% of capacity, producing about 730,000 tonnes of pellets in total for 2006. The fibre used to produce this volume of pellets was about 885,000 metric tonnes, largely in the form of sawdust, which is equivalent to 2.5 million cubic metres on a solid weight basis.

Related References

B.C. Competition Council, www.bccompetitioncouncil.gov.bc.ca
- Wood Products Advisory Committee Report to the Council, March 2006
- Pulp and Paper Industry Advisory Committee Report, January 2006

British Columbia Pulp and Paper Task Force, www.pulpandpaperbc.ca

Stennes, B. and B. Wilson. 2008. Secondary manufacturing of solid wood products in British Columbia 2006: structure, economic contribution and changes since 1990. Natural Resources Canada, Information Report, Victoria

Industry Canada, Strategies website,
strategis.ic.gc.ca/sc_ecnmy/sio/homepage.html

Natural Resources Canada, "The Atlas of Canada", available on the Internet at:
<http://atlas.gc.ca/site/english/maps/environment/forest/useforest/sawmills>

Pulp and Paper Product Council, www.pppc.org

Resource Information Systems Inc. (RISI), www.risiinfo.com

Spelter, Henry ; Alderman, Matthew, "Profile 2006 : softwood sawmills in the United States and Canada", 2006, Research Paper FPL-RP-630. Madison, WI: U.S. Department of Agriculture, Forest Service, Forest Products Laboratory. www.treesearch.fs.fed.us/pubs/21128

CHIP MILLS

(Listed Alphabetically)

Only mills that produce wood chips as a primary product are listed in this section.

Notes:

1. Measurement units are in thousands of bone dry units (000 BDUs).
2. Estimated annual capacity is based on a standardized operation of 240 days per year, two 8 hour shifts per day. Actual operations may vary from this schedule.

CHIP MILLS - 2006

Mill Number	Company	Location of Mill	Forest Region	Forest District	Estimated Annual Capacity (000s of BDUs)
446	Campbell River Fibre Ltd.	Campbell River	Coast	Campbell River	110
924	Chips Ahoy Fibre Supply	Mission	Coast	Chilliwack	37
345	DCT Chambers Trucking Ltd.	Deerholm/+1A6 Chemanius Ind. Park	Coast	South Island	187
356	East Fraser Fibre Co Ltd.	Mackenzie	Northern Interior	Mackenzie	240
538	Fraser Pulp Chips Ltd.	Surrey	Coast	Chilliwack	20
409	Howe Sound Pulp & Paper Ltd.	Vancouver	Coast	Chilliwack	278
937	Pacific Fibre	Port Mellon	Coast	Sunshine Coast	120
18	Terminal Forest Products Ltd.	Langdale Dryland Sort	Coast	Sunshine Coast	90
68	Tolko Industries Ltd.	Armstrong	Southern Interior	Okanagan Shuswap	26
107	Tolko Industries Ltd.	Williams Lake	Southern Interior	Central Cariboo	56
394	Tolko Industries Ltd.	Heffley Creek	Southern Interior	Kamloops	96
183	West Fraser Mills Ltd.	Terrace	Northern Interior	Kalum	192
405	Western Forest Products Ltd.	Nanaimo	Coast	South Island	326

LOG HOME MILLS

(Listed Alphabetically)

Mills that process logs to manufacture log homes are listed in this section.

A throughput capacity measurement is not as meaningful for log home mills as it is for other types of primary timber processing mills. Therefore, this section does not include estimated annual capacity.

LOG HOME MILLS - 2006

Mill Number	Company	Location of Mill	Forest Region	Forest District
37	Arcadia Log Homes	Surrey	Coast	Chilliwack
190	Artisan Custom Log Construction Ltd.	Maple Ridge	Coast	Chilliwack
946	BearPaw Mountain Homes Ltd.	Prince George	Northern Interior	Prince George
38	Big Foot Manufacturing Inc.	Tappen	Southern Interior	Okanagan Shuswap
39	Big Rock Homes	Clearbrook	Coast	Chilliwack
458	Brian Moore Log Homes Ltd.	Abbotsford	Coast	Chilliwack
697	Caliga Log Homes Ltd.	93 Mile	Southern Interior	100 Mile House
694	Canada's Log People Ltd.	100 Mile House	Southern Interior	100 Mile House
179	Canadian North Log Homes Inc.	Abbotsford	Coast	Chilliwack
260	Canadian Walden Log Homes Ltd.	Sardis	Coast	Chilliwack
208	Canalog Wood Industries Ltd	Cranbrook	Southern Interior	Rocky Mountain
522	Chinook Log Homes Ltd.	Bear Flats, Montney	Northern Interior	Peace
212	Custom Log Homes Ltd.	Salmon Arm	Southern Interior	Okanagan Shuswap
275	Granberg Construction Ltd.	Kamloops	Southern Interior	Kamloops
46	Hamill Creek Timberwrights	Meadow Creek	Southern Interior	Kootenay Lake
913	High Mountain Log Homes	Clinton	Southern Interior	100 Mile House
216	Ideal Export Log Homes Ltd.	Salmon Arm	Southern Interior	Okanagan Shuswap
218	Maurer Construction Ltd.	Penticton	Southern Interior	Okanagan Shuswap
391	Morgan Log Homes Ltd.	Hope	Coast	Chilliwack
49	Neville Log Homes Corporation	Kamloops	Southern Interior	Kamloops
230	Nicola Log Works Ltd.	Merritt	Southern Interior	Cascades
291	North American Log Crafters Ltd.	Celista	Southern Interior	Okanagan Shuswap
379	Old Yale Log Homes Ltd.	Sardis	Coast	Chilliwack
52	Original Log Homes Ltd.	100 Mile House	Southern Interior	100 Mile House
692	Pacific Log Homes Ltd.	Lone Butte	Southern Interior	100 Mile House

LOG HOME MILLS - 2006

Mill Number	Company	Location of Mill	Forest Region	Forest District
474	Pioneer Log Homes Ltd.	Williams Lake	Southern Interior	Central Cariboo
223	Radomske Log Homes Ltd	Kelowna	Southern Interior	Okanagan Shuswap
225	Rasmussen Log Homes Ltd.	Okanagan Falls	Southern Interior	Okanagan Shuswap
473	Reko Log Homes Ltd.	Quesnel	Southern Interior	Quesnel
57	Roundwood Log Homes Ltd.	Prince George	Northern Interior	Prince George
693	Sitka Log Homes Ltd.	100 Mile House	Southern Interior	100 Mile House
509	Ski Lumber Ltd.	Valemount	Southern Interior	Headwaters
58	Sperlich Log Construction Inc	Enderby	Southern Interior	Okanagan Shuswap
695	Superior Log Homes Ltd.	93 Mile	Southern Interior	100 Mile House
423	Surelog Homes Ltd.	Tappen	Southern Interior	Okanagan Shuswap
602	T.L. Timber Ltd.	Cawston	Southern Interior	Okanagan Shuswap
59	Tall Timber Log Builders	Abbotsford	Coast	Chilliwack
60	Top Notch Log Construction	Victoria	Coast	South Island
245	Traditional Log Homes Ltd.	Salmon Arm	Southern Interior	Okanagan Shuswap
63	West Coast Log Homes	Gibsons	Coast	Sunshine Coast
267	Whitevalley Log Homes Ltd.	Cherryville	Southern Interior	Okanagan Shuswap
698	Wildwood Forest Products Ltd.	Williams Lake	Southern Interior	Central Cariboo

LUMBER MILLS

(Listed Alphabetically)

Mills producing lumber are reported in the following 2 sections:

- a) Mills that have estimated annual capacity of more than 10 million board feet of lumber.
- b) Mills that have estimated annual capacity of less than 10 million board feet of lumber.

Notes:

- 1. Measurement units are in millions of board feet.
- 2. Estimated annual capacity is based on a standardized operation of 240 days per year, two 8 hour shifts per day. Actual mill operations may vary from this schedule.

THE FOLLOWING MILLS HAD CAPACITY OF MORE THAN 10 MILLION BOARD FEET OF LUMBER IN 2006

Mill Number	Company	Location of Mill	Forest Region	Forest District	Estimated Annual Capacity (millions of board feet)
9	A J Forest Products Ltd.	Brackendale	Coast	Squamish	14
5	Abfam Enterprises Ltd.	Port Clements	Coast	Queen Charlotte	24
128	Abitibi-Consolidated Company of Canada	Mackenzie	Northern Interior	Mackenzie	190
129	Abitibi-Consolidated Company of Canada	Mackenzie	Northern Interior	Mackenzie	166
8	Andersen Pacific Forest Products Ltd	Ruskin	Coast	Chilliwack	16
137	Apollo Forest Products Ltd.	Fort St James	Northern Interior	Fort St James	134
207	Ardeu Wood Products Ltd.	Merritt	Southern Interior	Cascades	65
498	Aspen Planers Ltd.	Merritt	Southern Interior	Cascades	173
213	Babine Forest Products Limited	Burns Lake	Northern Interior	Nadina	260
917	Burns Lake Community Forest	Burns Lake	Northern Interior	Nadina	17
252	C & C Wood Products Ltd.	Quesnel	Southern Interior	Quesnel	28
64	Canadian Forest Products Ltd.	Vavenby	Southern Interior	Headwaters	114
90	Canadian Forest Products Ltd.	Radium Hot Sprgs	Southern Interior	Rocky Mountain	168
97	Canadian Forest Products Ltd.	Prince George	Northern Interior	Prince George	119
110	Canadian Forest Products Ltd.	Quesnel	Southern Interior	Quesnel	264
122	Canadian Forest Products Ltd.	Fort St John	Northern Interior	Peace	206
127	Canadian Forest Products Ltd.	Chetwynd	Northern Interior	Peace	231
130	Canadian Forest Products Ltd.	Mackenzie	Northern Interior	Mackenzie	455
135	Canadian Forest Products Ltd.	Isle Pierre	Northern Interior	Prince George	188
140	Canadian Forest Products Ltd.	Engen	Northern Interior	Vanderhoof	276
153	Canadian Forest Products Ltd.	Prince George	Northern Interior	Prince George	257
160	Canadian Forest Products Ltd.	Bear Lake	Northern Interior	Prince George	132
166	Canadian Forest Products Ltd.	Prince George	Northern Interior	Prince George	226
193	Canadian Forest Products Ltd.	Houston	Northern Interior	Nadina	480
150	Carrier Lumber Ltd.	Prince George	Northern Interior	Prince George	192

THE FOLLOWING MILLS HAD CAPACITY OF MORE THAN 10 MILLION BOARD FEET OF LUMBER IN 2006

Mill Number	Company	Location of Mill	Forest Region	Forest District	Estimated Annual Capacity (millions of board feet)
737	Cheslatta Forest Products Ltd.	Ootsa Lake	Northern Interior	Nadina	100
377	Coulson Manufacturing Ltd	Port Alberni	Coast	South Island	38
181	Decker Lake	Burns Lake	Northern Interior	Nadina	74
326	Delta Cedar Products Ltd.	Delta	Coast	Chilliwack	43
45	Downie Timber Ltd.	Revelstoke	Southern Interior	Columbia	107
158	Dunkley Lumber Ltd.	Strathnaver	Northern Interior	Prince George	552
301	Errington Cedar Products Ltd.	Errington	Coast	South Island	19
12	Federated Co-op Ltd.	Canoe	Southern Interior	Okanagan Shuswap	168
714	Franklin Forest Products Ltd.	Port Alberni	Coast	South Island	22
538	Fraser Pulp Chips Ltd.	Surrey	Coast	Chilliwack	25
86	Galloway Lumber Co. Ltd.	Galloway	Southern Interior	Rocky Mountain	60
66	Gilbert Smith For Prod Ltd.	Barriere	Southern Interior	Kamloops	43
537	Goldwood Industries Ltd.	Richmond	Coast	Chilliwack	58
14	Gorman Bros Lumber Ltd.	Westbank	Southern Interior	Okanagan Shuswap	115
172	Hauer Bros. Lumber Ltd.	Tete Jaune Cache	Southern Interior	Headwaters	17
530	Houston Forest Products Co.	Houston	Northern Interior	Nadina	312
70	International Forest Products Ltd.	Adams Lake	Southern Interior	Kamloops	185
283	International Forest Products Ltd.	Delta	Coast	Chilliwack	158
297	International Forest Products Ltd.	Hammond	Coast	Chilliwack	158
361	International Forest Products Ltd.	Surrey	Coast	Chilliwack	109
461	International Forest Products Ltd.	New Westminster	Coast	Chilliwack	130
88	J H Huscroft Ltd.	Erickson	Southern Interior	Kootenay Lake	34
100	J.S. Jones	Surrey	Coast	Chilliwack	113
47	Joe Kozek Sawmills Ltd.	Revelstoke	Southern Interior	Columbia	14
50	Kalesnikoff Lumber Co. Ltd.	Thrums	Southern Interior	Arrow Boundary	122

THE FOLLOWING MILLS HAD CAPACITY OF MORE THAN 10 MILLION BOARD FEET OF LUMBER IN 2006

Mill Number	Company	Location of Mill	Forest Region	Forest District	Estimated Annual Capacity (millions of board feet)
184	Kitwanga Mills Ltd.	Kitwanga	Northern Interior	Skeena Stikine	67
144	L & M Lumber Ltd.	Vanderhoof	Northern Interior	Vanderhoof	240
149	Lakeland Mills Ltd.	Prince George	Northern Interior	Prince George	144
597	Lakeside Timber Ltd.	Tappen	Southern Interior	Okanagan Shuswap	14
255	Larry Buff Sawmills Ltd.	Westwold	Southern Interior	Okanagan Shuswap	17
712	Long Hoh Enterprises Canada Ltd	Qualicum Beach	Coast	South Island	36
116	Lytton Lumber Ltd.	Lytton	Southern Interior	Cascades	60
169	McBride Forest Ind. Ltd.	McBride	Southern Interior	Headwaters	22
603	Meadow Creek Cedar Ltd.	Cooper Creek	Southern Interior	Kootenay Lake	48
336	Mill & Timber Products Ltd.	Port Moody	Coast	Chilliwack	77
403	Mill & Timber Products Ltd.	Surrey	Coast	Chilliwack	60
22	Noble Custom Cut Ltd.	Whonnock	Coast	Chilliwack	33
618	North Enderby Timber Ltd.	Enderby	Southern Interior	Okanagan Shuswap	32
710	Northern Lumber Solutions Ltd	Prince George	Northern Interior	Prince George	19
713	Paragon Ventures Ltd.	Lumby	Southern Interior	Okanagan Shuswap	48
732	PG Sort Yard	Prince George	Northern Interior	Prince George	19
30	Pope & Talbot Ltd.	Grand Forks	Southern Interior	Arrow Boundary	122
31	Pope & Talbot Ltd.	Midway	Southern Interior	Arrow Boundary	144
62	Pope & Talbot Ltd.	Castlegar	Southern Interior	Arrow Boundary	245
133	Pope & Talbot Ltd.	Fort St James	Northern Interior	Fort St James	276
626	Porcupine Wood Products Ltd.	Salmo	Southern Interior	Kootenay Lake	38
454	S & R Sawmills Ltd.	Surrey	Coast	Chilliwack	192
480	Schapol Logging Ltd.	Enderby	Southern Interior	Okanagan Shuswap	12
740	Sigurdson Bros. Logging Company	Hanceville	Southern Interior	Chilcotin	72
750	Sigurdson Bros. Logging Company	Hanceville	Southern Interior	Chilcotin	72

THE FOLLOWING MILLS HAD CAPACITY OF MORE THAN 10 MILLION BOARD FEET OF LUMBER IN 2006

Mill Number	Company	Location of Mill	Forest Region	Forest District	Estimated Annual Capacity (millions of board feet)
631	Silvermere Forest Prod Ltd.	Ruskin	Coast	Chilliwack	17
55	Springer Creek Forest Products	Slocan	Southern Interior	Arrow Boundary	118
539	Stag Timber Ltd.	Surrey	Coast	Chilliwack	58
136	Stuart Lake Lumber Co. Ltd.	Fort St James	Northern Interior	Fort St James	132
602	T.L. Timber Ltd.	Cawston	Southern Interior	Okanagan Shuswap	14
79	Tembec Industries Ltd.	Canal Flats	Southern Interior	Rocky Mountain	182
82	Tembec Industries Ltd.	Elko	Southern Interior	Rocky Mountain	168
396	Terminal Forest Products Ltd.	Vancouver	Coast	Chilliwack	204
540	Terminal Forest Products Ltd.	Richmond	Coast	Chilliwack	192
182	Terrace Lumber Company Ltd.	Terrace	Northern Interior	Kalum	114
330	TimberWest Forest Corp.	Campbell River	Coast	Campbell River	118
20	Tolko Industries Ltd.	Lavington	Southern Interior	Okanagan Shuswap	161
25	Tolko Industries Ltd.	Merritt	Southern Interior	Cascades	206
67	Tolko Industries Ltd.	Kelowna	Southern Interior	Okanagan Shuswap	144
68	Tolko Industries Ltd.	Armstrong	Southern Interior	Okanagan Shuswap	216
98	Tolko Industries Ltd.	Quesnel	Southern Interior	Quesnel	148
101	Tolko Industries Ltd.	Williams Lake	Southern Interior	Central Cariboo	200
103	Tolko Industries Ltd.	Williams Lake	Southern Interior	Central Cariboo	261
107	Tolko Industries Ltd.	Williams Lake	Southern Interior	Central Cariboo	118
453	Twin River Cedar Products Ltd.	Ruskin	Coast	Chilliwack	43
173	Valemount Forest Products Ltd.	Valemount	Southern Interior	Headwaters	60
639	West Chilcotin Forest Products Ltd.	Anahim Lake	Southern Interior	Chilcotin	106
95	West Fraser Mills Ltd.	100 Mile House	Southern Interior	100 Mile House	237
113	West Fraser Mills Ltd.	Quesnel	Southern Interior	Quesnel	264
114	West Fraser Mills Ltd.	Williams Lake	Southern Interior	Central Cariboo	155
183	West Fraser Mills Ltd.	Terrace	Northern Interior	Kalum	168

THE FOLLOWING MILLS HAD CAPACITY OF MORE THAN 10 MILLION BOARD FEET OF LUMBER IN 2006

Mill Number	Company	Location of Mill	Forest Region	Forest District	Estimated Annual Capacity (millions of board feet)
191	West Fraser Mills Ltd.	Smithers	Northern Interior	Skeena Stikine	222
214	West Fraser Mills Ltd.	Clinton	Southern Interior	100 Mile House	240
526	West Fraser Mills Ltd.	Quesnel	Southern Interior	Quesnel	163
532	West Fraser Mills Ltd.	LeJac	Northern Interior	Vanderhoof	216
552	West Fraser Mills Ltd.	Chetwynd	Northern Interior	Peace	252
298	Western Forest Products	Delta	Coast	Chilliwack	53
320	Western Forest Products	Cowichan Bay	Coast	South Island	144
376	Western Forest Products	Ladysmith	Coast	South Island	120
389	Western Forest Products	New Westminster	Coast	Chilliwack	142
392	Western Forest Products	Port Alberni	Coast	South Island	68
393	Western Forest Products	Chemainus	Coast	South Island	80
528	Western Forest Products	Port Alberni	Coast	South Island	151
531	Western Forest Products	Nanaimo	Coast	South Island	154
546	Western Forest Products	Duke Point	Coast	South Island	108
27	Weyerhaeuser Company Ltd.	Okanagan Falls	Southern Interior	Okanagan Shuswap	161
29	Weyerhaeuser Company Ltd.	Princeton	Southern Interior	Cascades	196
74	Weyerhaeuser Company Ltd.	Mission Flats	Southern Interior	Kamloops	138
162	Winton Global	Bear Lake	Northern Interior	Prince George	264
672	Woodland Forest Products Ltd	Prince George	Northern Interior	Prince George	29
93	Wynndel Box & Lumber Co. Ltd.	Wynndel	Southern Interior	Kootenay Lake	58

THE FOLLOWING MILLS HAD CAPACITY OF LESS THAN 10 MILLION BOARD FEET OF LUMBER IN 2006

Mill Number	Company	Location of Mill	Forest Region	Forest District	Estimated Annual Capacity (millions of board feet)
715	100 Mile Wood Products	100 Mile House	Southern Interior	100 Mile House	2.9
7	Adams Lake Development Corporation	Squilax	Southern Interior	Kamloops	5.8
19	Albion Alder and Maple Co.	Maple Ridge	Coast	Chilliwack	2.4
10	BC Custom Timber Products Ltd.	Vanderhoof	Northern Interior	Vanderhoof	7.2
643	Bear Lumber Ltd.	Cranbrook	Southern Interior	Rocky Mountain	5.0
445	Beaver Forest Products Ltd	Campbell River	Coast	Campbell River	1.0
905	Blacktail Enterprises	Black Creek	Coast	Campbell River	0.5
444	C.V. Cedar Sales Ltd	Courtenay	Coast	Campbell River	0.1
16	Cascades West Forest Products Inc.	Hatzic	Coast	Chilliwack	4.8
738	Chalwood Forest Products LTD.	Port Alberni	Coast	South Island	7.2
452	Chimney Creek Lumber Co Ltd.	Williams Lake	Southern Interior	Central Cariboo	2.4
742	Corwood Timber Products Ltd.	Houston	Northern Interior	Nadina	8.3
73	Dale Arden Log Hauling Ltd.	Sooke	Coast	South Island	2.4
719	Dale Edwards	Ucluelet	Coast	South Island	0.5
741	Dove Creek Timber Corp.	Courtenay	Coast	Campbell River	9.6
11	Eagle River Industries Inc.	Malakwa	Southern Interior	Okanagan Shuswap	6.1
26	Edge Grain Cedar	Maple Ridge	Coast	Chilliwack	1.0
717	Edgegrain	Campbell River	Coast	Campbell River	1.0
734	Enid Lake Logging Ltd.	Invermere	Southern Interior	Rocky Mountain	1.4
319	Fu So Enterprises Ltd.	Surrey	Coast	Chilliwack	9.6
679	G.C. Williams Milling	Malcolm Island	Coast	North Island - Central Coast	1.4
32	Gibbs Custom Sawmill	McBride	Southern Interior	Headwaters	1.4
567	Green Forest Products Ltd.	Merville	Coast	Campbell River	1.4

THE FOLLOWING MILLS HAD CAPACITY OF LESS THAN 10 MILLION BOARD FEET OF LUMBER IN 2006

Mill Number	Company	Location of Mill	Forest Region	Forest District	Estimated Annual Capacity (millions of board feet)
705	Heartwood Ventures	Cumberland	Coast	Campbell River	0.5
518	Herridge Trucking and Sawmilling Ltd	Nakusp	Southern Interior	Arrow Boundary	7.2
286	Hilmoe Forest Products Ltd.	Rock Creek	Southern Interior	Arrow Boundary	9.1
708	Island Pacific Wood Products	Tahsis	Coast	Campbell River	2.9
512	Jemico Enterprises Ltd.	Chemainus	Coast	South Island	8.2
743	John Salo	Sointula	Coast	North Island - Central Coast	0.5
247	Jones Ties and Poles (1978) Ltd.	Rossland	Southern Interior	Arrow Boundary	7.2
281	Karl Beattie Cont Ltd.	Revelstoke	Southern Interior	Columbia	4.8
702	Linde Bros Lumber Ltd.	Williams Lake	Southern Interior	Central Cariboo	7.2
399	Lois Lumber Ltd.	Lang Bay	Coast	Sunshine Coast	8.6
542	Marsh Bros Lumber and Supply Ltd.	McBride	Southern Interior	Headwaters	7.2
197	McDonald Ranch & Lumber Ltd.	Grasmere	Southern Interior	Rocky Mountain	3.4
194	Mike Gogo Cedar Products	Nanaimo	Coast	South Island	1.0
662	Munson Equipment Ltd.	Chase	Southern Interior	Kamloops	1.4
408	Nagaard Sawmills Ltd.	Port Alberni	Coast	South Island	6.6
199	North Star Planing Co. Ltd.	Athalmer	Southern Interior	Rocky Mountain	3.8
482	Notch Hill Forest Products Ltd.	Sorrento	Southern Interior	Okanagan Shuswap	4.8
535	Pro Cut Lumber Corp.	Lk Cowichan Hwy	Coast	South Island	1.4
582	Quadra Island Forest Products Ltd.	Quadra Island	Coast	Campbell River	2.9
744	Rainbow Lumber	Whiskey Creek	Coast	South Island	2.4
716	Rocky Mountain Salvage	Port Hardy	Coast	North Island - Central Coast	1.4
271	Rouck Brothers Sawmill Ltd.	Lumby	Southern Interior	Okanagan Shuswap	5.8
907	Saratoga Speedway Mills	Campbell River	Coast	Campbell River	1.4
731	SCG Forest Inc.	Courtenay	Coast	Campbell River	2.4

THE FOLLOWING MILLS HAD CAPACITY OF LESS THAN 10 MILLION BOARD FEET OF LUMBER IN 2006

Mill Number	Company	Location of Mill	Forest Region	Forest District	Estimated Annual Capacity (millions of board feet)
23	Shannon Lumber	Mission	Coast	Chilliwack	5.8
670	Silva Services Ltd.	Alliford Bay	Coast	Queen Charlotte	0.6
514	Simpcw Development Co Ltd.	Barriere	Southern Interior	Kamloops	4.8
654	Spike Top Cedar Ltd.	Port Hardy	Coast	North Island - Central Coast	1.0
24	Suncoast Lumber and Milling	Sechelt	Coast	Sunshine Coast	9.7
96	Thomson Bros. Lumber Co. Ltd.	Courtenay	Coast	Campbell River	4.8
99	Ukass Logging Ltd.	Wilmer Creek	Southern Interior	Rocky Mountain	3.8
229	Wadlegger Log & Constr. Co.	Raft River	Southern Interior	Headwaters	4.8
698	Wildwood Forest Products Ltd.	Williams Lake	Southern Interior	Central Cariboo	2.4
347	Ye' Old Dogwood Lumber	Cowichan Lake	Coast	South Island	1.9

PELLET MILLS

(Listed Alphabetically)

Mills producing wood pellets for bio-energy are listed in this section.

Notes:

1. Measurement units are in thousands of tonnes.
2. Estimated annual capacity for pellet mills is based on a standardized operation of 345 days per year, three 8 hour shifts per day. Actual operations may vary from these schedules.

PELLET MILLS - 2006

Mill Number	Company	Location of Mill	Forest Region	Forest District	Estimated Annual Capacity ('000s of tonnes)
929	Armstrong Pellet, Inc	Armstrong	Southern Interior	Okanagan Shuswap	50
930	Pacific Bioenergy Corp	Prince George	Northern Interior	Prince George	135
931	Pinnacle Pellet Inc.	Quesnel	Southern Interior	Quesnel	90
947	Pinnacle Pellet Inc.	Houston	Northern Interior	Nadina	150
948	Pinnacle Pellet Inc.	Williams Lake	Southern Interior	Central Cariboo	115
932	Premium Pellet Ltd.	Vanderhoof	Northern Interior	Vanderhoof	130
933	Princeton Co-Generation Corp	Princeton	Southern Interior	Cascades	90
935	Westwood Fibre Products	Westbank	Southern Interior	Okanagan Shuswap	50

POLE AND POST MILLS

(Listed Alphabetically)

Mills producing poles and posts are listed in this section.

Notes:

1. Measurement units are in thousands of pieces ('000 pcs).
2. Estimated annual capacity is based on a standardized operation of 240 days per year, one 8 hour shift per day, although actual mill operations may vary from this schedule.

UTILITY POLE MILLS - 2006

Mill Number	Company	Location of Mill	Product	Forest Region	Forest District	Estimated Annual Capacity ('000s of pieces)
4	Bell Pole Company	Lumby	UTI	Southern Interior	Okanagan Shuswap	36
48	Bell Pole Company	Revelstoke	UTI	Southern Interior	Columbia	36
659	Brisco Wood Preservers Ltd.	Brisco	UTI	Southern Interior	Rocky Mountain	26
556	Chinook Forest Products Ltd.	Courtenay	UTI	Coast	Campbell River	24
40	Gorman Bros Lumber Ltd.	Lumby	UTI	Southern Interior	Okanagan Shuswap	28
724	Integrated Pole	100 Mile House	UTI	Southern Interior	100 Mile House	11
222	Kanaka Creek Pole Company	Haney	UTI	Coast	Chilliwack	24
725	O'Brien & Fuerst Logging Ltd.	Port Clements	UTI	Coast	Queen Charlotte	22
677	Pacific Inland Pole & Piling Ltd.	Nakusp	UTI	Southern Interior	Arrow Boundary	18
188	Paterson Pole Ltd.	Rossland	UTI	Southern Interior	Arrow Boundary	29
232	Princeton Wood Preservers Ltd	Princeton	UTI	Southern Interior	Cascades	29
648	Selkirk Forest Products Ltd.	Galloway	UTI	Southern Interior	Rocky Mountain	24
728	Sierra Cascade Resources II L.L.C.	Port McNeill	UTI	Coast	North Island - Central Coast	6
729	Sierra Cascade Resources II L.L.C.	Kelsey Bay Division	UTI	Coast	Campbell River	6
637	Stella-Jones Inc.	Prince George	UTI	Northern Interior	Prince George	30
181	West Fraser Mills Ltd.	Burns Lake	UTI	Northern Interior	Nadina	14

OTHER POLE AND POST MILLS - 2006

Mill Number	Company	Location of Mill	Product	Forest Region	Forest District	Estimated Annual Capacity ('000s of pieces)
498	Aspen Planers Ltd.	Merritt	PST	Southern Interior	Cascades	1272
390	Box Lake Lumber Prod Ltd	Nakusp	PST	Southern Interior	Arrow Boundary	168
556	Chinook Forest Products Ltd.	Courtenay	PST	Coast	Campbell River	2
117	Continental Pole Ltd.	Pemberton	PLE	Coast	Squamish	12
279	J. R. Blackmore & Sons Ltd.	Lumberton	PLE	Southern Interior	Rocky Mountain	150
279	J. R. Blackmore & Sons Ltd.	Lumberton	PST	Southern Interior	Rocky Mountain	720
721	Mego Wood Products (1989) Ltd.	Princeton	PST	Southern Interior	Cascades	720
607	Monte Lake Forest Products Inc.	Monte Lake	PST	Southern Interior	Okanagan Shuswap	508
250	Nicola Post and Rail Co. Ltd.	Merritt	PST	Southern Interior	Cascades	480
677	Pacific Inland Pole & Piling Ltd.	Nakusp	PLE	Southern Interior	Arrow Boundary	12
739	Panhandle Forest Products	Lumberton	PST	Southern Interior	Rocky Mountain	480
237	Princeton Post and Rail Co. Ltd.	Princeton	PLE	Southern Interior	Cascades	50
237	Princeton Post and Rail Co. Ltd.	Princeton	PST	Southern Interior	Cascades	528
232	Princeton Wood Preservers Ltd	Princeton	PST	Southern Interior	Cascades	720
619	Quinton Bros.	Caven	PST	Southern Interior	Rocky Mountain	600
343	TRC Cedar Ltd.	McBride	PST	Southern Interior	Headwaters	600

PULP AND PAPER MILLS

(Listed Alphabetically)

Mills producing pulp and paper are listed in this section. For integrated mills, pulp capacity includes pulp that is used internally to produce paper, and pulp that is shipped from the mill site as market pulp.

Notes:

1. Measurement units are in thousands of tonnes.
2. Estimated annual capacity is based on a standardized operation of 345 operating days per year, 24 hours per day. Actual operations may vary from this schedule.

PULP AND PAPER MILLS - 2006

Mill Number	Company	Location of Mill	Product	Forest Region	Forest District	Estimated Annual Capacity (000s of tonnes)
128	Abitibi-Consolidated Company of Canada	Mackenzie	PLP	Northern Interior	Mackenzie	217
128	Abitibi-Consolidated Company of Canada	Mackenzie	PPR	Northern Interior	Mackenzie	156
500	Canadian Forest Products Ltd.	Prince George	PLP	Northern Interior	Prince George	145
500	Canadian Forest Products Ltd.	Prince George	PPR	Northern Interior	Prince George	126
500.1	Canadian Forest Products Ltd.	Prince George	PLP	Northern Interior	Prince George	294
503	Canadian Forest Products Ltd.	Prince George	PLP	Northern Interior	Prince George	555
335	Canfor Taylor Pulp	Taylor	PLP	Northern Interior	Peace	210
497	Cariboo Pulp & Paper Co. Ltd.	Quesnel	PLP	Southern Interior	Quesnel	329
206	Catalyst Paper	Coquitlam	PLP	Coast	Chilliwack	138
330	Catalyst Paper	Duncan Bay	PPR	Coast	Campbell River	616
330	Catalyst Paper	Duncan Bay	PLP	Coast	Campbell River	776
483	Catalyst Paper	Crofton	PLP	Coast	South Island	677
483	Catalyst Paper	Crofton	PPR	Coast	South Island	508
487	Catalyst Paper	Port Alberni	PLP	Coast	South Island	185
487	Catalyst Paper	Port Alberni	PPR	Coast	South Island	307
486	Catalyst Paper	Powell River	PLP	Coast	Sunshine Coast	347
486	Catalyst Paper	Powell River	PPR	Coast	Sunshine Coast	436
506	Crown Packaging Ltd.	Burnaby	PPR	Coast	Chilliwack	106
507	Domtar Inc.	Annacis Island	PPR	Coast	Chilliwack	104
496	Eurocan Pulp & Paper Co.	Kitimat	PLP	Northern Interior	Kalum	449
496	Eurocan Pulp & Paper Co.	Kitimat	PPR	Northern Interior	Kalum	466
484	Howe Sound Pulp & Paper Ltd.	Port Mellon	PLP	Coast	Sunshine Coast	656
484	Howe Sound Pulp & Paper Ltd.	Port Mellon	PPR	Coast	Sunshine Coast	242
488	Pope & Talbot Ltd.	Cedar	PLP	Coast	South Island	407
505	Pope & Talbot Ltd.	Mackenzie	PLP	Northern Interior	Mackenzie	223

PULP AND PAPER MILLS - 2006

Mill Number	Company	Location of Mill	Product	Forest Region	Forest District	Estimated Annual Capacity (000s of tonnes)
489	Port Alice Pulp Mill	Port Alice	PLP	Coast	North Island - Central Coast	179
553	Quesnel River Pulp Co.	Quesnel	PLP	Southern Interior	Quesnel	336
491	Scott Paper Ltd.	New Westminster	PLP	Coast	Chilliwack	31
491	Scott Paper Ltd.	New Westminster	PPR	Coast	Chilliwack	124
1	Tembec Industries Ltd.	Skookumchuk	PLP	Southern Interior	Rocky Mountain	250
205	Tembec Industries Ltd.	Chetwynd	PLP	Northern Interior	Peace	207
2	Weyerhaeuser Company Ltd.	Kamloops	PLP	Southern Interior	Kamloops	473
501	Zellstoff Celgar Limited Partnership	Castlegar	PLP	Southern Interior	Arrow Boundary	449

SHAKE AND SHINGLE MILLS

(Listed Alphabetically)

Mills that produce shake and shingles are listed in this section.

Notes:

1. Measurement units are in thousands of roofing squares ('000 sq). A roofing square is approximately 100 square feet.
2. Estimated annual capacity is based on a standardized operation of 240 days per year, two 8 hour shifts per day. Actual mill operations may vary from this schedule.

SHAKE AND SHINGLE MILLS - 2006

Mill Number	Company	Location of Mill	Forest Region	Forest District	Estimated Annual Capacity ('000s of squares)
673	Anbrook Industries Ltd.	Pitt Meadows	Coast	Chilliwack	115
285	Associated Cedar Products (1994) Ltd.	Albion	Coast	Chilliwack	25
288	B C F Shake Mill Ltd.	Fanny Bay	Coast	South Island	49
688	Best Quality Cedar Products Ltd	Maple Ridge	Coast	Chilliwack	192
706	Bill Little Contracting Ltd	Campbell River	Coast	Campbell River	3
390	Box Lake Lumber Prod Ltd	Nakusp	Southern Interior	Arrow Boundary	5
550	C. J. Cedar Ltd.	Merville	Coast	Campbell River	2
449	Campbell River Shake and Shingle Co Ltd	Campbell River	Coast	Campbell River	5
583	Coast Mountain Cedar Products	Mission	Coast	Chilliwack	103
315	Comox Valley Shakes Ltd.	Campbell River	Coast	Campbell River	53
638	Confederate Shake & Shingle Ltd.	Youbou	Coast	South Island	19
69	Copper Mountain Cedar Products	Terrace	Northern Interior	Kalum	9
587	G & R Cedar Ltd.	Matsqui	Coast	Chilliwack	84
671	Graham Island Forest Products Ltd.	Masset	Coast	Queen Charlotte	38
71	Hi-Mark Lumber	Duncan	Coast	South Island	12
72	Imperial Shake Co Ltd	Abbotsford	Coast	Chilliwack	144
599	J & D Shake & Cedar Mill Ltd	Mission	Coast	Chilliwack	77
321	J & D Shake and Cedar Mill Ltd.	Duncan	Coast	South Island	72
76	K.L.P. Shake and Shingle	Vernon	Southern Interior	Okanagan Shuswap	19
399	Lois Lumber Ltd.	Powell River	Coast	Sunshine Coast	58
687	Maple Leaf Shake and Shingle Ltd.	Maple Ridge	Coast	Chilliwack	101
543	Ocean Blue Cedar Products Ltd.	Campbell River	Coast	Campbell River	120
77	Parker Cedar Custom Mill Products	Pitt Meadows	Coast	Chilliwack	19
711	Port Hardy Merchandising Ltd.	Port Hardy	Coast	North Island - Central Coast	19
460	Port McNeill Shake & Shingles Ltd.	Port McNeill	Coast	North Island - Central Coast	29

SHAKE AND SHINGLE MILLS - 2006

Mill Number	Company	Location of Mill	Forest Region	Forest District	Estimated Annual Capacity ('000s of squares)
266	Premium Cedar Products Ltd.	Ruskin	Coast	Chilliwack	152
374	Remco Shake & Shingle Prod Ltd.	Cooper Creek	Southern Interior	Kootenay Lake	18
455	S & W Shake & Shingle Ltd.	Ruskin	Coast	Chilliwack	115
167	Seltic-Sherwen Shake/Shingle Ltd.	Menzies Bay	Coast	Campbell River	12
591	Serpentine Cedar Ltd.	Fort Langley	Coast	Chilliwack	58
612	Silver Creek Premium Products	Mission	Coast	Chilliwack	336
631	Silvermere Forest Prod Ltd.	Ruskin	Coast	Chilliwack	24
902	Taylor Contracting	Zeballos	Coast	Campbell River	15
106	Teal Cedar Prod (1977) Ltd.	Surrey	Coast	Chilliwack	336
722	Titan Ridge	Port McNeill	Coast	North Island - Central Coast	155
723	Vancouver Island Shake and Shingle	Port McNeill	Coast	North Island - Central Coast	12
691	W. Boyes Shake and Shingle Ltd.	Gateway	Southern Interior	100 Mile House	14
464	Waldun Forest Products Ltd.	Ruskin	Coast	Chilliwack	197

VENEER, PLYWOOD, OSB AND OTHER PANEL MILLS

(Listed Alphabetically)

Mills producing veneer, plywood and other types of panel are listed in this section. For mills that produce both market veneer and plywood, veneer capacity includes market veneer and the veneer that is used within the mill to manufacture plywood. Panel mills that use wood residuals to produce panels or that do not have log-processing capability are also listed in this report.

Notes:

1. Measurement units are in millions of square feet, 3/8" basis (mill. sq. ft., 3/8").
2. Estimated annual capacity for veneer mills is based on a standardized operation of 240 days per year, two 8 hour shifts per day. For plywood mills, estimated annual capacity is based on a standardized operation of 240 days per year, three 8 hour shifts per day. For OSB and other Panel mills, estimated annual capacity is based on a standardized operation of 345 days per year, three 8 hour shifts per day. Actual operations may vary from these schedules.

VENEER, PLYWOOD, OSB AND OTHER PANEL MILLS - 2006

Mill Number	Company	Location of Mill	Product	Forest Region	Forest District	Estimated Annual Capacity (million sq. ft, 3/8" basis)
109	Ainsworth Lumber Co. Ltd.	Savona	PLY	Southern Interior	Kamloops	158
115	Ainsworth Lumber Co. Ltd.	Lillooet	VNR	Southern Interior	Cascades	119
411	Ainsworth Lumber Co. Ltd.	100 Mile House	OSB	Southern Interior	100 Mile House	419
51	Atco Wood Products	Fruitvale	VNR	Southern Interior	Arrow Boundary	108
34	B C Veneer Products Ltd	Surrey	VNR	Coast	Chilliwack	24
121	Canadian Forest Products Ltd.	Fort Nelson	PLY	Northern Interior	Fort Nelson	202
121	Canadian Forest Products Ltd.	Fort Nelson	VNR	Northern Interior	Fort Nelson	206
151	Canadian Forest Products Ltd.	Prince George	PLY	Northern Interior	Prince George	180
151	Canadian Forest Products Ltd.	Prince George	VNR	Northern Interior	Prince George	122
459	Canadian Forest Products Ltd.	Fort Nelson	OSB	Northern Interior	Fort Nelson	674
536	Canadian Forest Products Ltd.	New Westminster	PNL	Coast	Chilliwack	37
246	Canpar Industries Ltd	Grand Forks	PNL	Southern Interior	Arrow Boundary	282
508	CIPA Lumber Co. Ltd.	Annacis Island	VNR	Coast	Chilliwack	252
244	Coastland Wood Ind. Ltd.	Nanaimo	VNR	Coast	South Island	213
12	Federated Co-op Ltd.	Canoe	PLY	Southern Interior	Okanagan Shuswap	158
12	Federated Co-op Ltd.	Canoe	VNR	Southern Interior	Okanagan Shuswap	144
84	Louisiana Pacific Canada Ltd.	Golden	PLY	Southern Interior	Columbia	135
84	Louisiana Pacific Canada Ltd.	Golden	VNR	Southern Interior	Columbia	134
650	Louisiana Pacific Canada Ltd.	Dawson Creek	OSB	Northern Interior	Peace	388
169	McBride Forest Ind. Ltd.	McBride	VNR	Southern Interior	Headwaters	82
357	Northern Engineering Wood Products Inc.	Smithers	PNL	Northern Interior	Skeena Stikine	92
942	Peace Valley OSB	Fort St John	OSB	Northern Interior	Peace	775
478	Richmond Plywood Corp. Ltd.	Richmond	PLY	Coast	Chilliwack	227
478	Richmond Plywood Corp. Ltd.	Richmond	VNR	Coast	Chilliwack	173
35	Tolko Industries Ltd.	Lumby	VNR	Southern Interior	Okanagan Shuswap	192

VENEER, PLYWOOD, OSB AND OTHER PANEL MILLS - 2006

Mill Number	Company	Location of Mill	Product	Forest Region	Forest District	Estimated Annual Capacity (million sq. ft, 3/8" basis)
67	Tolko Industries Ltd.	Kelowna	PLY	Southern Interior	Okanagan Shuswap	161
67	Tolko Industries Ltd.	Kelowna	VNR	Southern Interior	Okanagan Shuswap	173
68	Tolko Industries Ltd.	Armstrong	PLY	Southern Interior	Okanagan Shuswap	360
68	Tolko Industries Ltd.	Armstrong	VNR	Southern Interior	Okanagan Shuswap	211
394	Tolko Industries Ltd.	Heffley Creek	PLY	Southern Interior	Kamloops	187
394	Tolko Industries Ltd.	Heffley Creek	VNR	Southern Interior	Kamloops	144
105	West Fraser Mills Ltd.	Williams Lake	PLY	Southern Interior	Central Cariboo	193
105	West Fraser Mills Ltd.	Williams Lake	VNR	Southern Interior	Central Cariboo	127
112	West Fraser Mills Ltd.	Quesnel	PLY	Southern Interior	Quesnel	179
112	West Fraser Mills Ltd.	Quesnel	VNR	Southern Interior	Quesnel	106
113	West Fraser Mills Ltd.	Quesnel	PNL	Southern Interior	Quesnel	340

OTHER PRIMARY PROCESSING MILLS

(Listed Alphabetically)

Mills listed in this section have log processing capability but do not produce any of the previously listed products.

OTHER MILLS - 2006

Mill Number	Company	Location of Mill	Product	Forest Region	Forest District
84	Louisiana Pacific Canada Ltd.	Golden	LVL	Southern Interior	Columbia
743	John Salo	Sointula	SSB	Coast	North Island - Central Coast
