

Major Primary Timber Processing Facilities In British Columbia

2007



The Best Place on Earth

Ministry of Forests and Range
Economics and Trade Branch



Major Primary Timber Processing Facilities In British Columbia

2007

Economics and Trade Branch
Ministry of Forests and Range
Victoria, B.C.

November 2009

Foreword

This is the 2007 edition of the Ministry of Forests and Range publication of *Major Primary Timber Processing Facilities in British Columbia* and refers to timber processing mills that have primary log processing capability and which operated during 2007. Coverage does not include re-manufacturing plants. Pulp and paper mills, panel plants and pellet mills are included in this report even though some do not have primary log processing capabilities. Where a mill produces more than one product (e.g. lumber and veneer; poles and posts), each operation is listed in the respective sections of the report.

The information was gathered through a survey of individual processing mills. If a mill did not submit a response, mill specific information reported in trade publications, directories and corporate annual reports may have been used. In some cases Ministry of Forests and Range staff provided estimates based on their knowledge of the operation and information reported in previous years.

This year's report includes an analysis section with time series data for capacity, output and log input for lumber, veneer and pulp and paper mills.

This report is available free of charge on the Ministry of Forests and Range Internet site at:

<http://www.for.gov.bc.ca/het/>

The report is updated annually. Comments, errors or omissions may be sent to the following location:

Economics and Trade Branch
Ministry of Forests and Range
P.O. Box 9514, Station Prov Gov,
Victoria, B.C.
V8W 9C3

Phone (250) 387-8610
FAX (250) 387-5050

E-mail: Forests.EconomicsAndTradeBranchOffice@gov.bc.ca

Acknowledgements

The cooperation of mill personnel who responded to the Ministry of Forests and Range survey is gratefully acknowledged.

The important role played by Ministry of Forests and Range regional and district staff in securing mill responses is also gratefully acknowledged.

The assistance provided by Peter Drake on updating the solid wood equivalent conversion factors is much appreciated.

Table of Contents

	PAGE
Map of Forest Regions and Districts effective April 1, 2006.....	4
Analysis	5
A. Introduction.....	5
B. Wood Fibre Supply and Use in British Columbia	5
C. Time Series Data	
1) Medium and Large Lumber Mills	9
2) Veneer Mills	14
3) Pulp and Paper Mills	18
4) Pellet Mills	22
Related References	23
Appendix1: Conversion of Lumber and Chips to Solid Wood Equivalent.....	24
List of Mills	25
Chip Mills	25
Log Home Mills	27
Lumber Mills.....	30
Pellet Mills.....	36
Pole and Post Mills	38
Pulp and Paper Mills	41
Shake and Shingle Mills.....	43
Veneer, Plywood, and Other Panel Mills.....	45
Other Primary Processing Mills.....	47

Abbreviations for Products

UTI - Utility Pole	PLY - Plywood
PLE - Other Pole	OSB - Oriented Strand Board
PST - Fence Post	PNL - Other Panel
PLP - Pulp	LVL - Laminated Veneer Lumber
PPR - Paper	SSB - Shake and Shingle Block
VNR - Veneer	

Forest Region and District Boundaries - April 1, 2003

RSI · Southern Interior Forest Region (Kamloops)

- DMH · 100 Mile House Forest District (100 Mile House)
- DAB · Arrow Boundary Forest District (Castlegar, Grand Forks, Nakusp)
- DCS · Cascades Forest District (Merritt, Lillooet, Princeton)
- DCC * Central Cariboo Forest District (Williams Lake, Horsefly, Likely)
- DCH · Chilcotin Forest District (Alexis Creek)
- DCO · Columbia Forest District (Revelstoke, Golden)
- DHW · Headwaters Forest District (Clearwater, McBride)
- DKA * Kamloops Forest District (Kamloops)
- DKL * Kootenay Lake Forest District (Nelson)
- DOS * Okanagan Shuswap Forest District (Vernon, Penticton, Salmon Arm)
- DQU · Quesnel Forest District (Quesnel)
- DRM · Rocky Mountain Forest District (Cranbrook, Invermere)

* Denotes BC Timber Sales Location

RNI · Northern Interior Forest Region (Prince George)

- DFN · Fort Nelson Forest District (Fort Nelson)
- DJA · Fort St. James Forest District (Fort St. James)
- DKM * Kalum Forest District (Terrace)
- DMK · Mackenzie Forest District (Mackenzie)
- DND * Nadina Forest District (Burns Lake, Houston)
- DPC * Peace Forest District (Dawson Creek, Fort St. John)
- DPG * Prince George Forest District (Prince George)
- DSS · Skeena Stikine Forest District (Smithers, Dease Lake, Hazelton)
- DVA * Vanderhoof Forest District (Vanderhoof)

RCO · Coast Forest Region (Nanaimo)

- DCR * Campbell River Forest District (Campbell River)
- DCK * Chilliwack Forest District (Chilliwack)
- DQC · Haida Gwaii Forest District (Queen Charlotte City)
- DNC · North Coast Forest District (Prince Rupert)
- DIC * North Island - Central Coast Forest District (Port McNeill, Hagensborg)
- DSI · South Island Forest District (Port Alberni, Duncan)
- DSQ · Squamish Forest District (Squamish)
- DSC · Sunshine Coast Forest District (Powell River, Sechelt)



ANALYSIS

A. Introduction

The Analysis section of the report presents summary statistics derived from the mill survey database, and selected analysis of these statistics. First, fibre supply and use in the province in 2007 is examined through a series of pie charts. The next section presents times series statistics for medium and large lumber and veneer mills, as well as pulp and paper mills.

B. Wood Fibre Supply and Use in British Columbia, 2007

Figure 1 shows estimated log use in British Columbia by mill type. Total log input to primary mills decreased by 6.8 million cubic metres or 8% from 2006 levels, with the log input decreasing by 16% on the Coast and 6% in the Interior.

The decline in log use was mainly due to a reduction in logs used by lumber mills, which fell from 62.6 million cubic metres in 2006 to 56.6 million cubic metres in 2007.

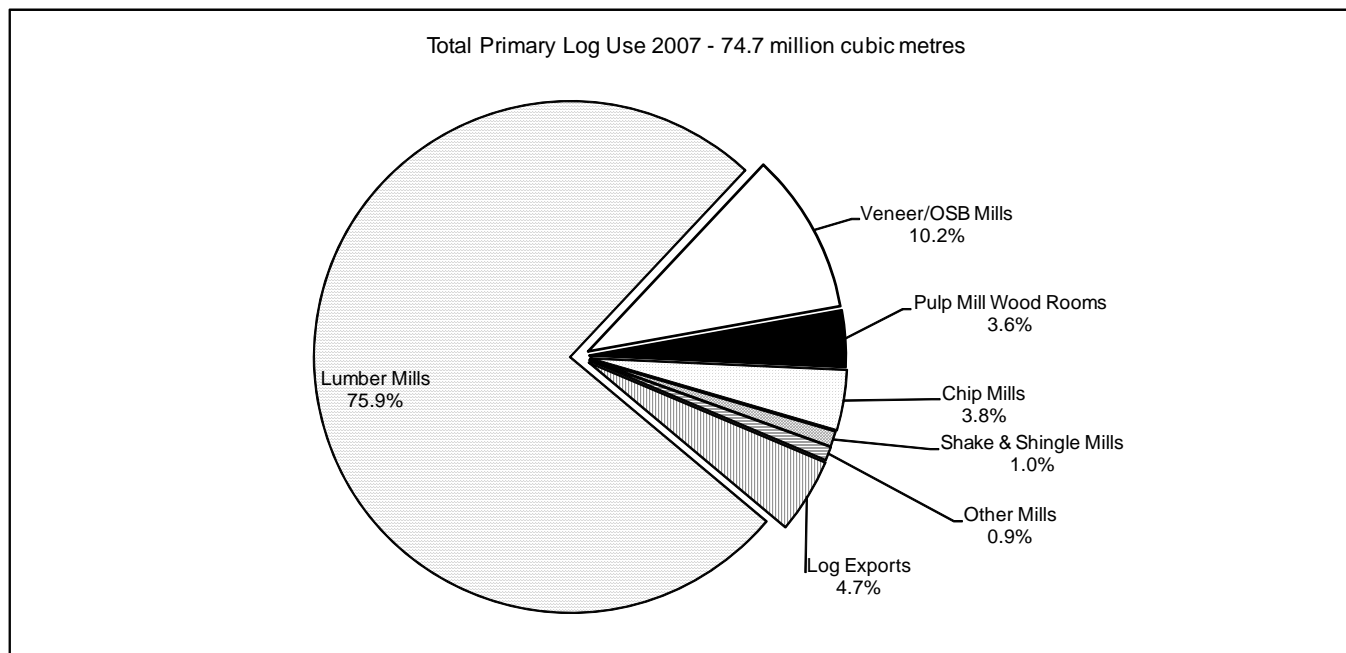
Lumber mills accounted for 76% of the total primary log use in 2007, followed by veneer and OSB mills at 10%.

Figure 2 estimates product recovery from lumber mills. It shows that 45% of the volume of wood entering lumber mills was converted to lumber, 2% lost through lumber shrinkage, and the remaining 53% converted to chips, sawdust and shavings.

Figure 3 combines figures 1 and 2 with a chart showing fibre used by pulp mills and pellet mills. In 2007, 90% of the fibre used by pulp mills was in the form of chips and sawdust obtained from other mills, while 10% was from logs chipped in the pulp mill. Fibre use in pellet mills in 2007 is estimated to be 2.5 million cubic metres in solid wood equivalent, similar to 2006 levels.

Figure 1: Estimated British Columbia Primary Log Use - 2007

Log Use By:	COAST			INTERIOR			PROVINCE		
	Number of Mills	Estimated Volume Used (000 m ³)	Per Cent	Number of Mills	Estimated Volume Used (000 m ³)	Per Cent	Number of Mills	Estimated Volume Used (000 m ³)	Per Cent
Lumber Mills	67	8,445	48.9%	111	48,185	84.0%	178	56,629	75.9%
Veneer/OSB Mills	4	1,577	9.1%	17	6,024	10.5%	21	7,600	10.2%
Pulp Mill Wood Rooms	7	1,730	10.0%	13	924	1.6%	20	2,654	3.6%
Chip Mills	7	1,586	9.2%	6	1,256	2.2%	13	2,842	3.8%
Shake & Shingle Mills	30	722	4.2%	4	7	0.0%	34	729	1.0%
Other Mills	17	106	0.6%	60	551	1.0%	77	657	0.9%
Log Exports		3,117	18.0%		417	0.7%		3,534	4.7%
Total Primary Log Use	132	17,282	100%	211	57,363	100%	343	74,646	100%
2007 Harvest (excluding waste and reject)		18,884			53,699			72,583	
Plus Log Imports								81	
Total Available								72,665	
Difference								-1,981	-2.7%



Sources:

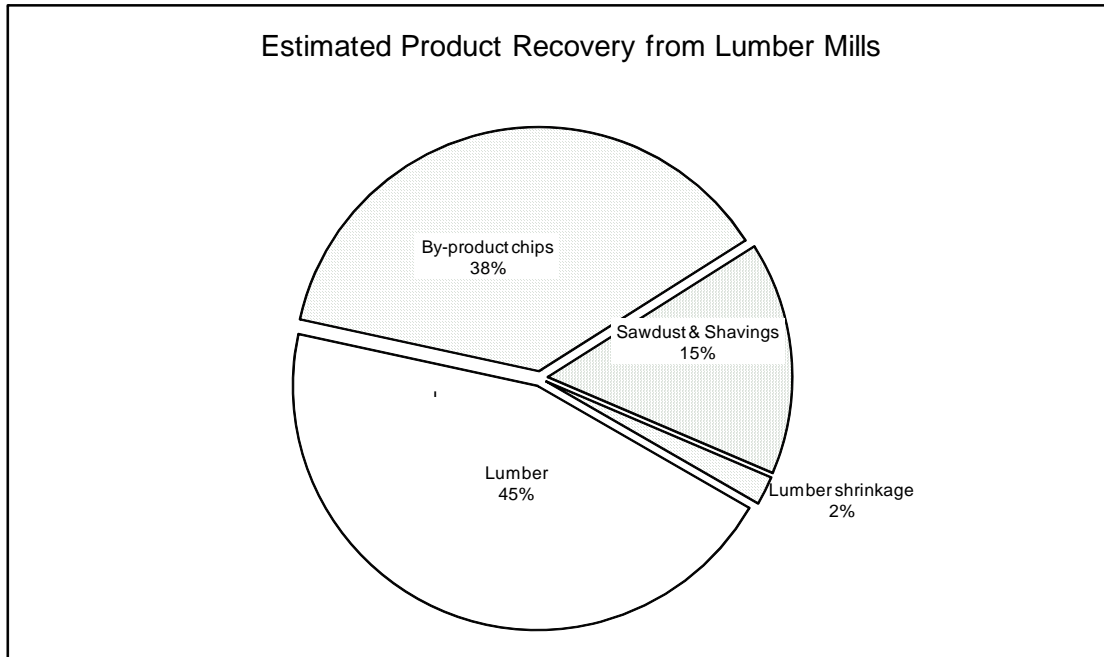
Survey data; Statistics Canada trade data; BC Ministry of Forests and Range log export statistics.

Notes:

1. Statistics above do not include mills that were closed or did not operate in 2007.
2. Other mills include fence post mills, utility pole mills, other pole mills and log home mills.

Figure 2: Estimates of Product Recovery from Lumber Mills - 2007

	Units	Coast	Interior	Province
Number of Mills		67	111	178
Log Input	('000 m ³)	8,445	48,185	56,629
Lumber Output				
Lumber Output (nominal measure)	(mfbm)	1,908	13,403	15,310
Lumber Recovery Factor	(mfbm/m ³)	0.226	0.278	0.270
Conversion Factor *	(m ³ /mfbm)	2.07	1.61	1.67
= Actual Volume of Lumber Produced	('000 m ³)	3,949	21,578	25,527
As Per Cent of Log Input	(%)	47%	45%	45%
Lumber Shrinkage				
Shrinkage (5% of lumber production)	('000 m ³)	-	1,079	1,079
As Per Cent of Log Input	(%)	0%	2%	2%
By Product Chip Output (from Lumber Mills)				
By Product Chip Output	(000 bdu)	1,117	6,580	7,697
By Product Chip Recovery Factor	(bdu/'000 m ³)	132	137	136
Conversion Factor	(m ³ /bdu)	2.86	2.75	2.77
= Volume of Chips Produced	('000 m ³)	3,194	18,094	21,288
As Per Cent of Log Input	(%)	38%	38%	38%
Sawdust and Shavings - Estimated Volume				
As Per Cent of Log Input	(%)	15%	15%	15%



Sources: Survey data and Forintek Canada Corp., "Conversion Factors for the Forest Products Industry in Western Canada", Special Publication No. SP-24R, 1985.

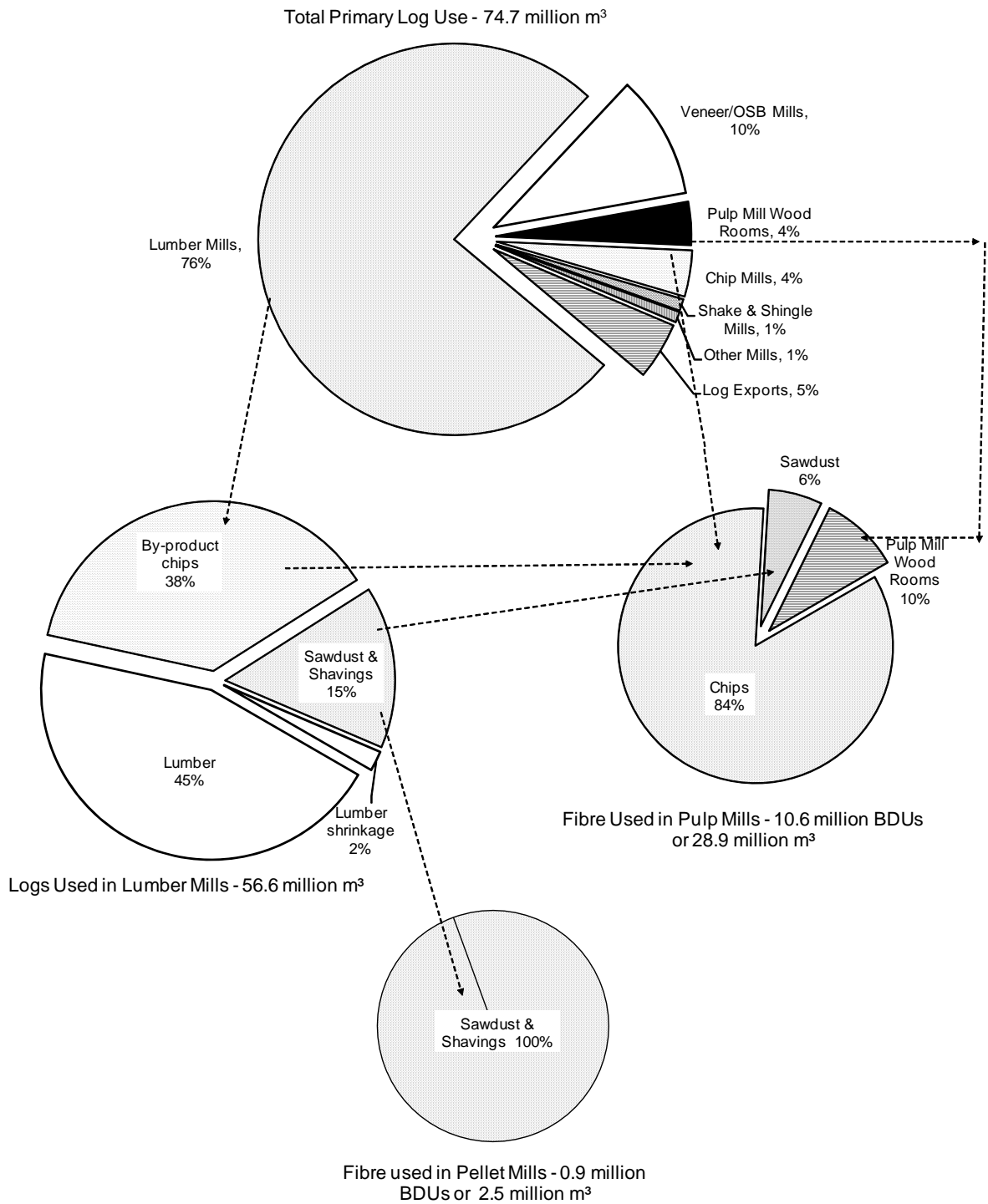
Notes:

* Conversion factors are to convert lumber output or by-product chips in nominal measure to solid wood equivalent.

mfbm = thousand board feet; m³ = cubic metres; bdu = bone dry unit = 2400 pounds.

Appendix 1 describes how these conversion factors were updated to reflect current production activities in the province.

Figure 3: Estimated British Columbia Log and Fibre Use - 2007



C. Time Series Data

1) Medium and Large Lumber Mills

There were 95 lumber mills with capacity over 40 million board feet per year operating in BC in 2007, accounting for about 98% of lumber production¹. Figure 4 shows the distribution of lumber mills by mill size, for the Coast and Interior.

Figure 4: Distribution Of British Columbia Lumber Mills By Size - 2007

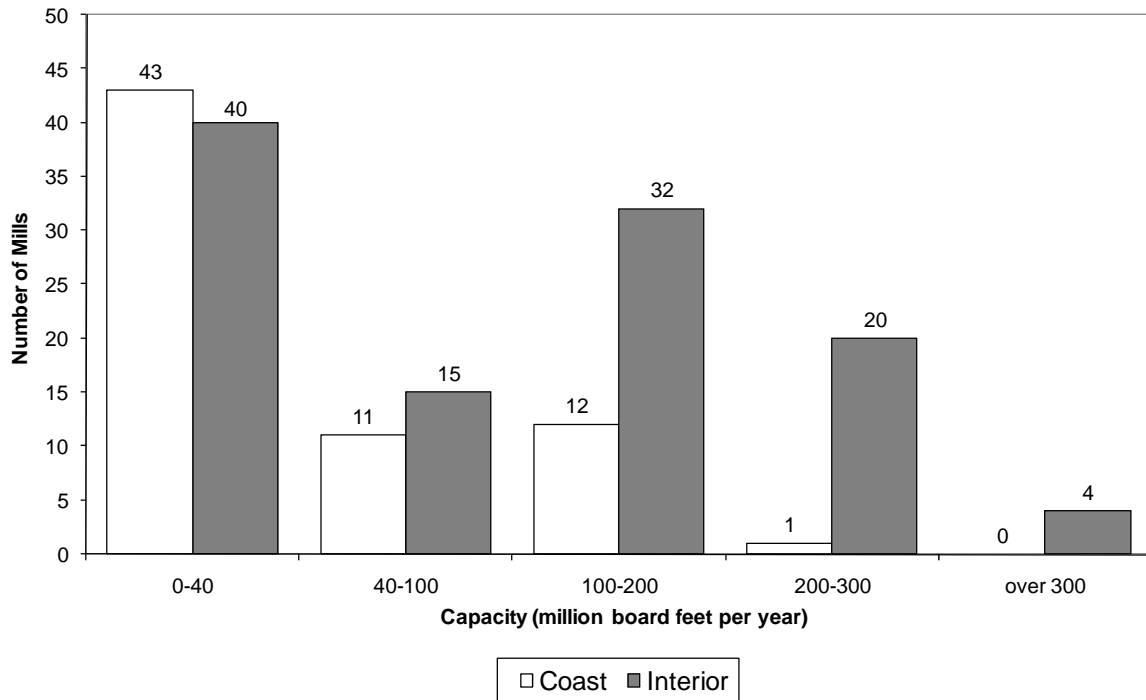


Table 1 shows detailed statistics for medium and large sized sawmills in BC from 1990 to 2007². The data covers 24 mills on the Coast and 71 in the Interior in 2007.

While total capacity for these mills has remained relatively constant at about 15 billion board feet per year, Figures 5 and 6 show that as the number of mills fell between 1990 and 2007, the average capacity per mill increased markedly, especially in the Interior between 2001 and 2005.

¹ This publication also reports estimated annual capacity for a large number of small mills: 83 mills with capacity under 40 million board feet in 2007, of which about half had capacity of under 5 million board foot per year.

² The time series data was developed from historical databases from the Ministry of Forests and Range annual mill survey and only covers those mills with annual capacity of 40 million board feet or more.

Figure 7 shows that capacity utilization fluctuates year to year. Capacity utilization is higher in the Interior than on the Coast. Interior capacity utilization has been trending upwards since 2002, although this has dropped a little in 2007. On the Coast, capacity utilization dropped markedly in 2007, dropping to the lowest point in the last 18 years. This reflects widespread curtailments on the Coast in 2007. Almost all mills on the Coast had production reductions in 2007.

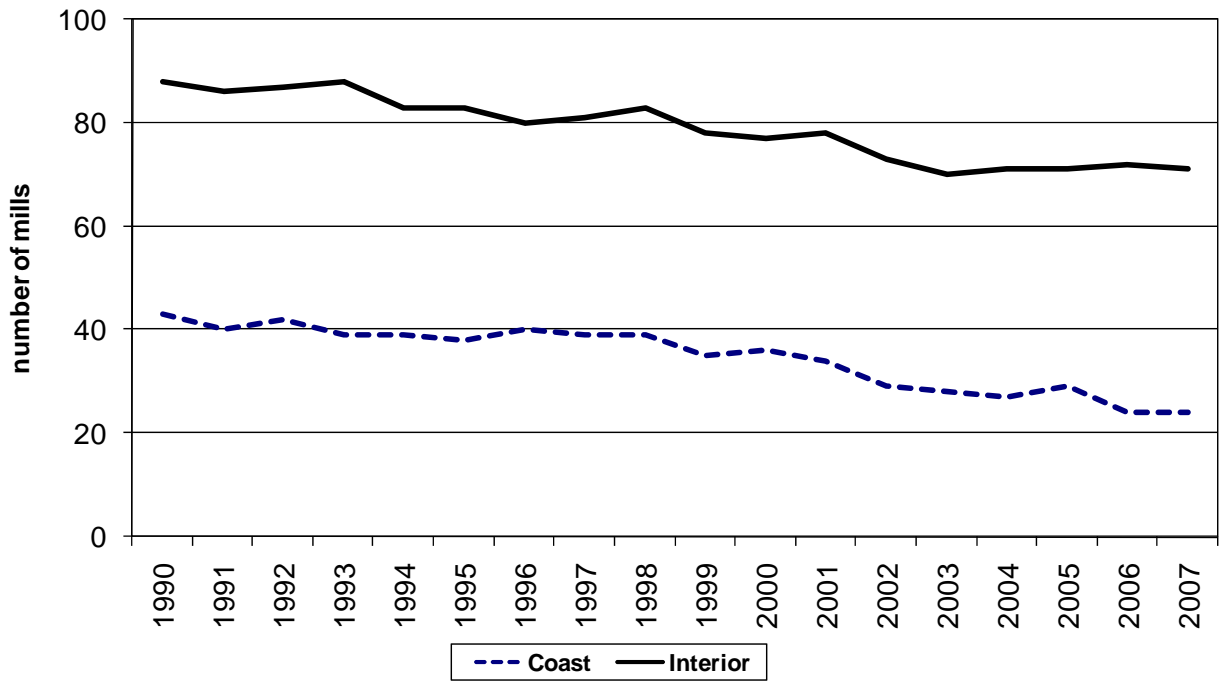
From Figure 8, the lumber recovery factors in both the Interior and Coastal regions have been rising, with the Interior rising at a higher rate. This trend, however, has flattened out in the Interior since 2004, which is not surprising as mills began to saw a higher proportion of lower quality beetle killed timber. The lumber recovery factor for the Coast is lower partly because of species differences and the more diverse range of lumber products manufactured on the Coast as compared to the Interior.

Table 1: British Columbia Lumber Mill Summary Statistics for Medium and Large Sized Mills

		1990...	1995...	2000	2001	2002	2003	2004	2005	2006	2007	% change 1990-2007
COAST												
Number of Mills		43	38	36	34	29	28	27	29	24	24	-44%
Total Capacity	billion board feet per year	4.2	3.8	4.0	3.7	3.3	3.2	3.2	3.4	2.7	2.7	-37%
Total Output	billion board feet per year	3.8	3.3	3.1	2.5	2.4	2.3	2.6	2.6	2.4	1.7	-54%
Total Input	million cubic metres per year	17.1	15.0	13.8	11.3	10.7	10.1	11.3	11.2	10.3	7.6	-56%
Average Capacity	million board feet per mill per year	99	100	111	109	113	116	118	117	114	111	13%
Capacity Utilization	output divided by capacity	89%	88%	77%	67%	74%	72%	81%	76%	89%	65%	-27%
Lumber Recovery Factor	'000 board feet per cubic metre	0.220	0.223	0.222	0.222	0.228	0.233	0.229	0.231	0.237	0.230	4%
INTERIOR												
Number of Mills		88	83	77	78	73	70	71	71	72	71	-19%
Total Capacity	billion board feet per year	10.7	10.4	10.8	11.3	11.6	11.9	12.6	12.9	12.7	12.3	16%
Total Output	billion board feet per year	10.0	10.0	10.5	10.3	11.8	11.9	13.4	14.3	14.2	13.2	33%
Total Input	million cubic metres per year	42.2	40.9	40.0	38.1	43.4	43.1	47.6	50.7	50.6	47.4	12%
Average Capacity	million board feet per mill per year	121	125	140	145	159	170	177	181	177	174	43%
Capacity Utilization	output divided by capacity	93%	96%	98%	90%	102%	100%	107%	111%	112%	107%	15%
Lumber Recovery Factor	'000 board feet per cubic metre	0.236	0.245	0.263	0.269	0.273	0.275	0.281	0.282	0.281	0.279	18%
PROVINCE												
Number of Mills		131	121	113	112	102	98	98	100	96	95	-27%
Total Capacity	billion board feet per year	14.9	14.2	14.7	15.1	14.9	15.1	15.8	16.3	15.5	15.0	1%
Total Output	billion board feet per year	13.7	13.3	13.6	12.8	14.3	14.2	16.0	16.9	16.6	15.0	9%
Total Input	million cubic metres per year	59.2	55.8	53.8	49.4	54.0	53.1	58.9	61.9	60.8	55.0	-7%
Average Capacity	million board feet per mill per year	114	117	130	134	146	154	161	163	161	158	39%
Capacity Utilization	output divided by capacity	92%	94%	92%	85%	96%	94%	101%	104%	108%	100%	9%
Lumber Recovery Factor	'000 board feet per cubic metre	0.232	0.239	0.253	0.258	0.264	0.267	0.271	0.272	0.274	0.273	18%

Medium and Large Sized Mills defined as lumber mills with estimated capacity over 40 million board feet per year.
Capacity estimated assuming two 8-hour shifts, 240 days per year.

**Figure 5: BC Medium and Large Sized Lumber Mills
Number of Mills**



**Figure 6: BC Medium and Large Sized Lumber Mills
Average Capacity**

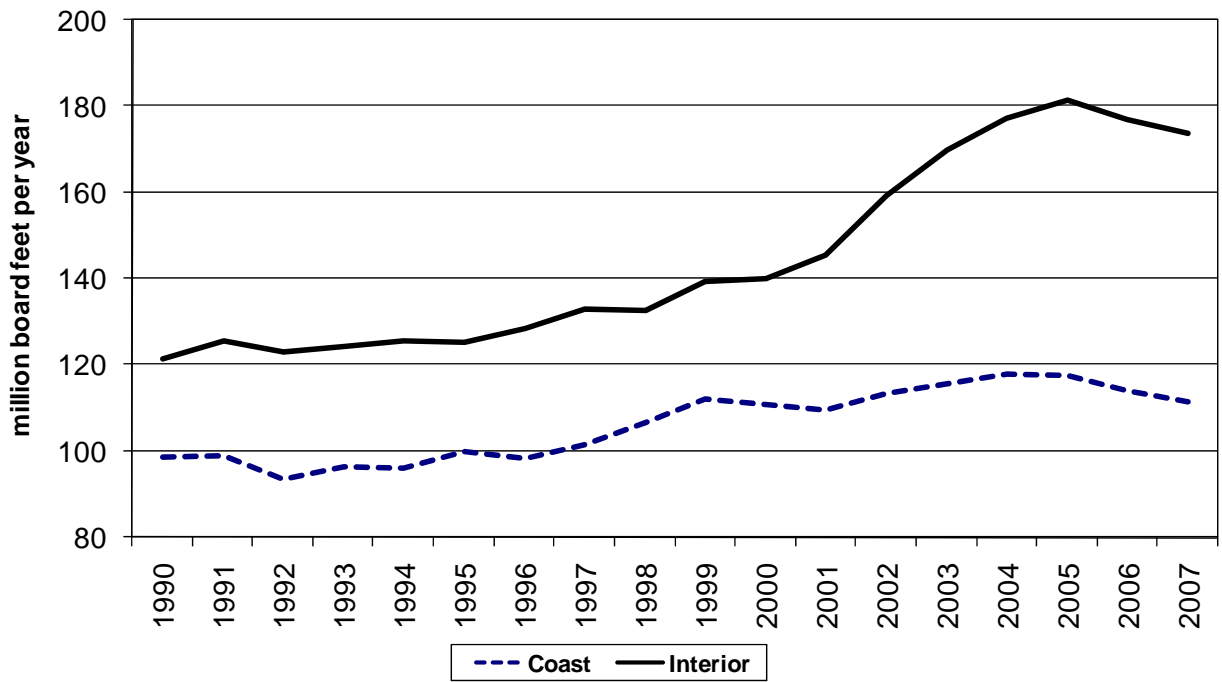


Figure 7: BC Medium and Large Sized Lumber Mills Capacity Utilization

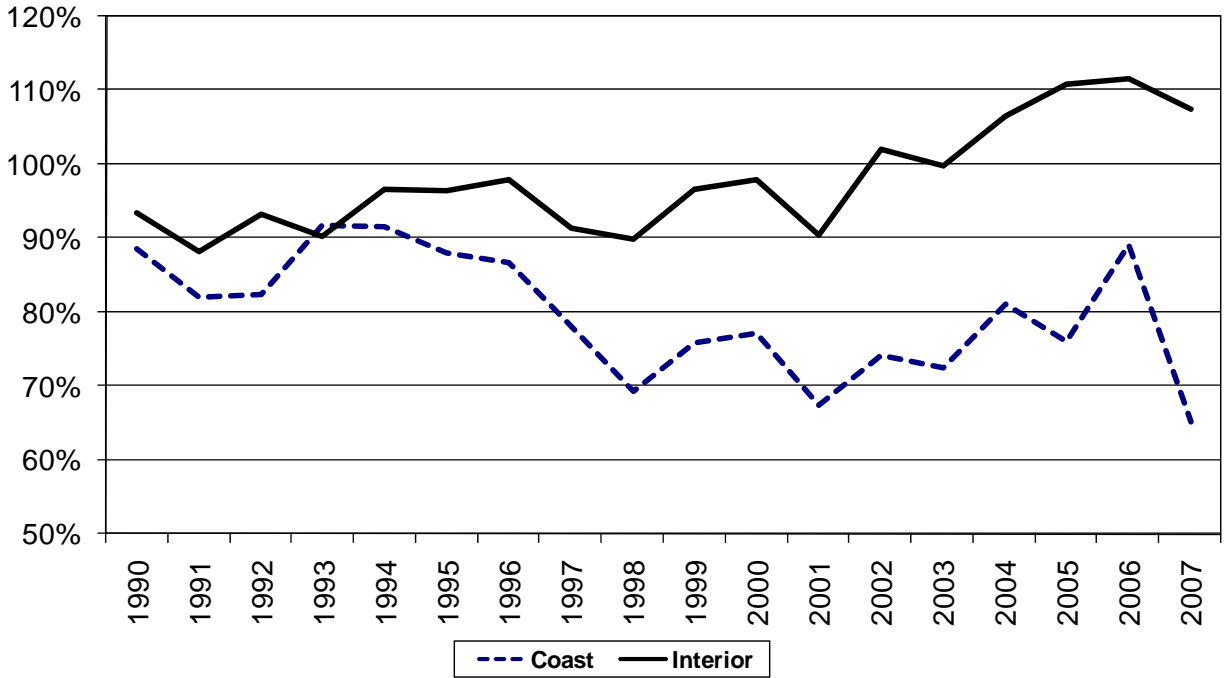
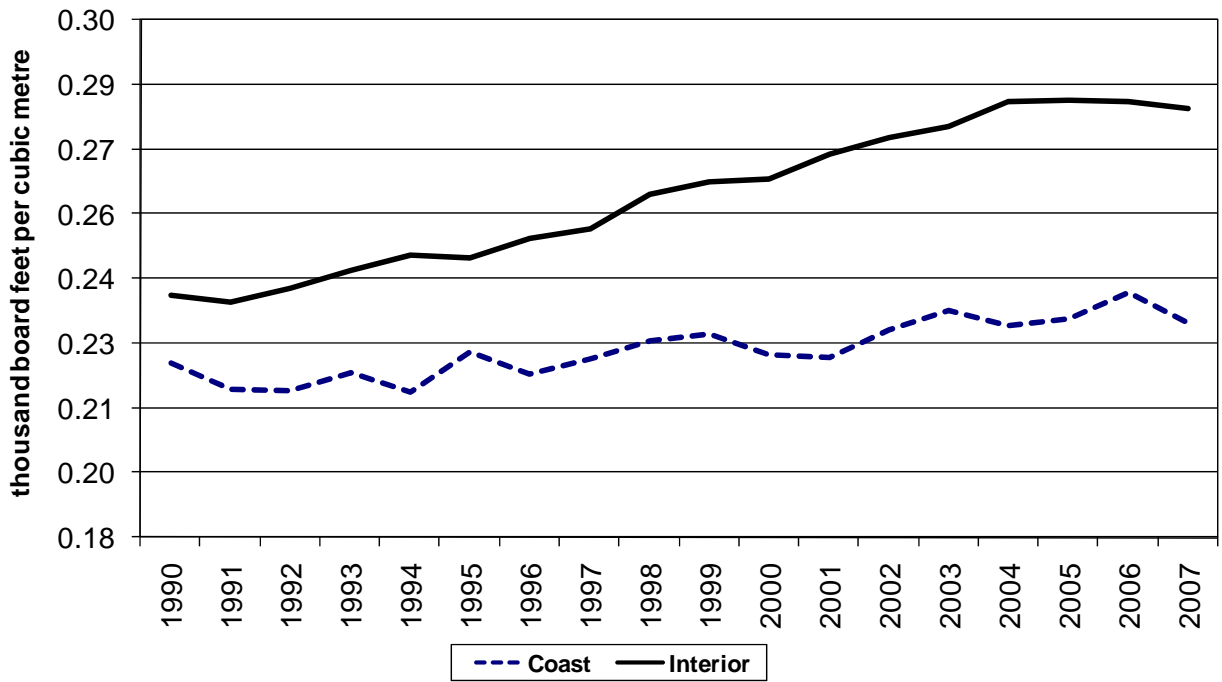


Figure 8: BC Medium and Large Sized Lumber Mills Lumber Recovery Factor



2) Veneer Mills

Veneer is used as an input to plywood manufacturing as well as an input to other engineered wood products such as laminated veneer lumber. Ten veneer mills in British Columbia have a plywood mill on the same site, whereas 5 mills produce “market veneer” for sale to plywood and other types of mills³.

Table 2 gives a provincial overview of veneer mill statistics for 1990-2007. These statistics show 15 veneer mills operating in British Columbia in 2007, 3 on the Coast and 12 in the Interior. Total veneer capacity grew between 2000 and 2006, but declined in 2007 with the closure of McBride Forest Industries and production curtailments in a number of mills.

Figure 9 shows total output and log input dropped in 2006 and 2007. Figure 10 shows that the average size of veneer mills grew steadily over the period. Figure 11 shows a steady upward trend for capacity utilization in veneer mills since 1991 as mills shifted from 2 to 3 shifts per day. The trend was reversed in 2006 and 2007, as veneer mills curtailed production due to the poor U.S. housing market. Figure 12 shows that BC veneer mill’s recovery factor grew over the 1990s, but has remained steady since 2000 at about 580 square feet per cubic metre of log input.

³ These numbers and the time series statistics below do not include 2 very small veneer mills.

Table 2: British Columbia Veneer Mill Summary Statistics

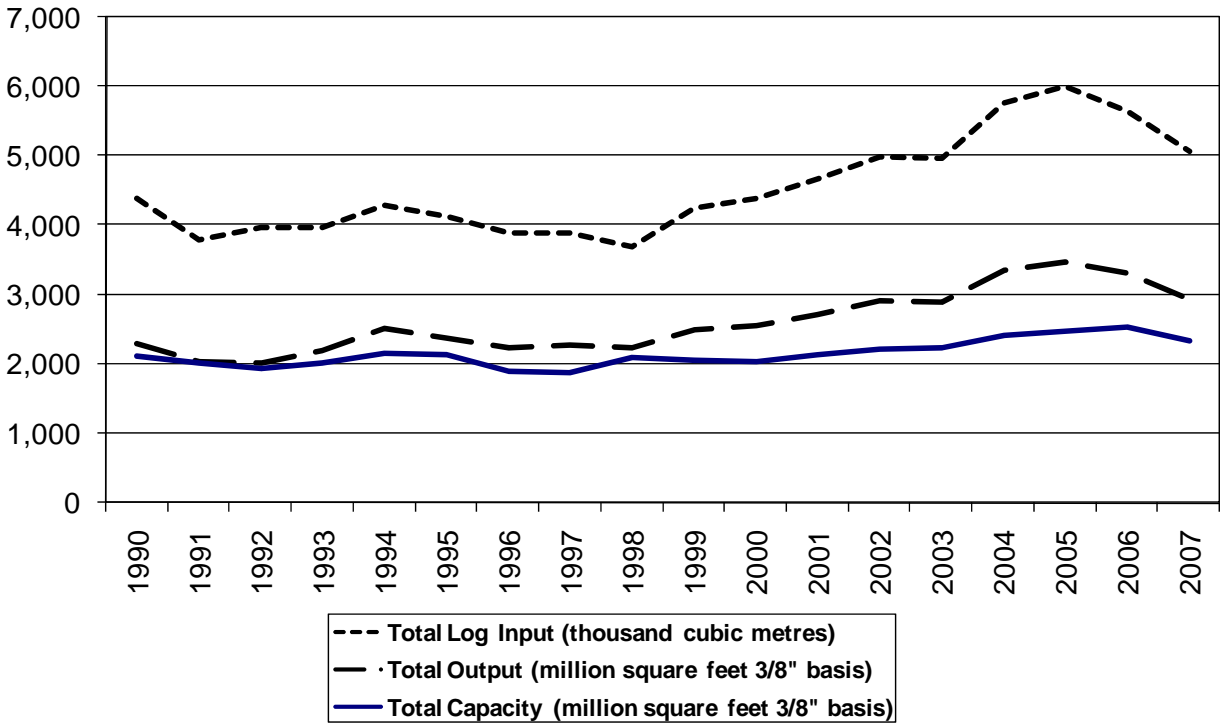
		1990...	1995...	2000	2001	2002	2003	2004	2005	2006	2007	% change 1990-2007
Number of Mills		20	17	16	16	16	16	16	16	16	15	-25%
Total Capacity	(million square feet 3/8" basis)	2,102	2,131	2,030	2,124	2,212	2,228	2,400	2,459	2,529	2,325	11%
Total Output	(million square feet 3/8" basis)	2,306	2,387	2,567	2,724	2,911	2,901	3,362	3,477	3,321	2,946	28%
Total Log Input	(thousand cubic metres)	4,398	4,143	4,390	4,665	4,989	4,976	5,754	6,001	5,652	5,069	15%
Average Capacity	(million square feet per mill)	105	125	127	133	138	139	150	154	158	155	47%
Average Log Input	(thousand cubic metres per mill)	220	244	274	292	312	311	360	375	353	338	54%
Capacity Utilization	(output divided by capacity)	110%	112%	126%	128%	132%	130%	140%	141%	131%	127%	16%
Recovery Factor	(square feet per cubic metre log input)	524	576	585	584	584	583	584	579	588	581	11%

Source: Major Primary Timber Processing Facilities in British Columbia, internal database, various years

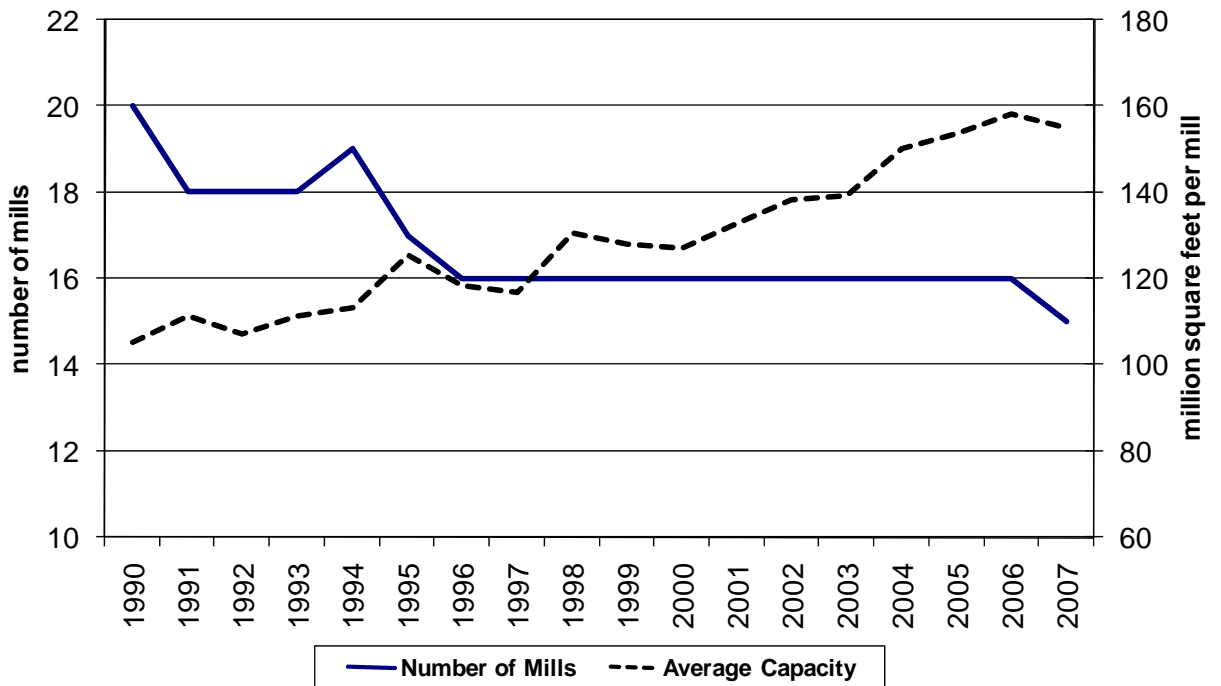
Output Capacity is estimated based on two 8 hour shifts, 240 days per year

Very small mills using an average of less than 25,000 cubic metres of logs per year are not included in these statistics

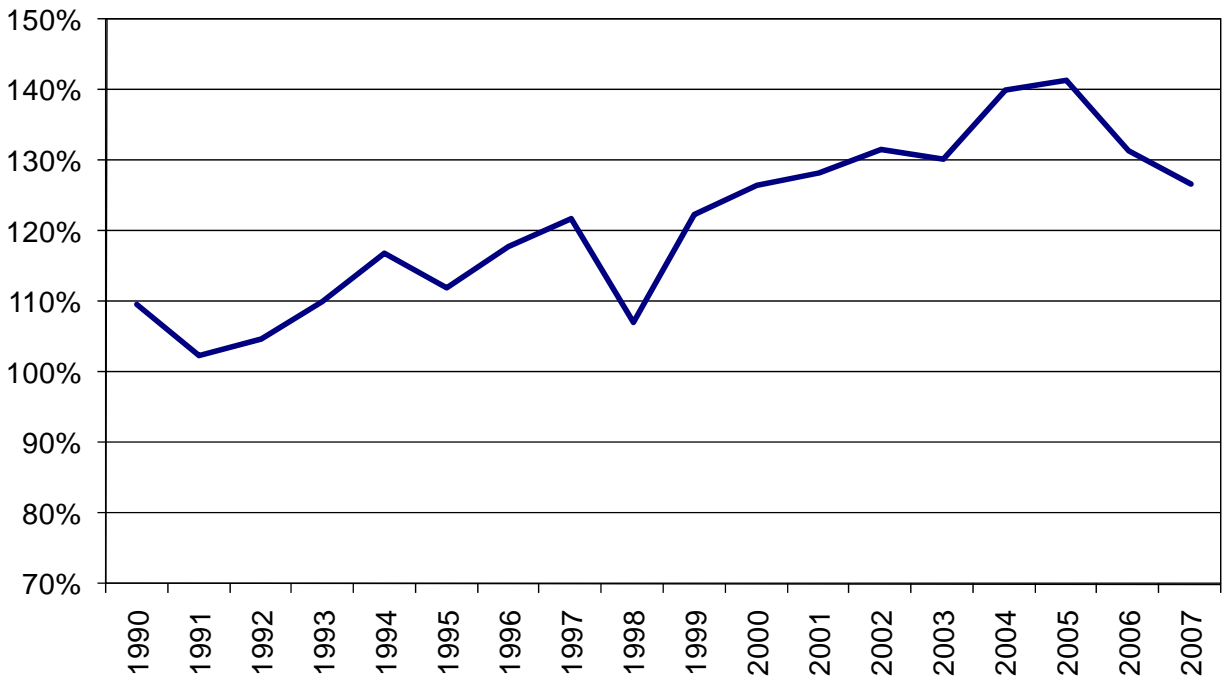
**Figure 9: BC Veneer Mills
Capacity, Output and Log Input**



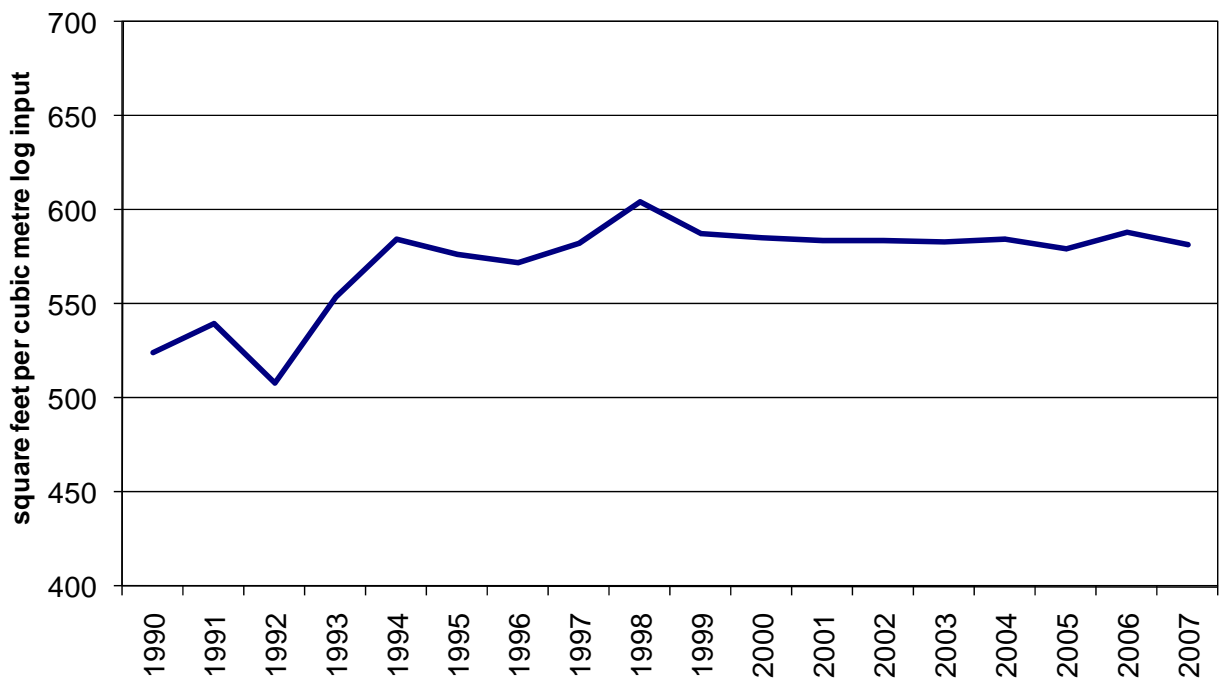
**Figure 10: BC Veneer Mills
Number of Mills and Average Capacity**



**Figure 11: BC Veneer Mills
Capacity Utilization**



**Figure 12: BC Veneer Mills
Recovery Factor**



3) Pulp and Paper Mills

Pulp is used primarily as a raw material for paper and paperboard products as well as packaging. There were 20 pulp mills and 9 paper mills in BC in 2007. Of the 20 pulp mills, 9 were integrated, meaning that both the pulp mill and paper mill are located in the same site. The main pulp products are bleached softwood kraft pulp and chemi-thermomechanical pulp (CTMP) whereas most of the paper produced in BC is newsprint.

Table 3 presents an overview of pulp and paper mills in the province for 1991-2007. Total capacity of pulp mills in BC has declined steadily since 1991, while total output fell by 8% over the same period. Paper mill capacity fell by 18% between 1991 and 2007, with total paper mill output falling by 7% over this period. Average capacities of pulp mills and paper mills in BC have remained relatively stable over the years.

From Figure 13, total capacity and total output for pulp mills have followed the same trend in recent years, which helps explain the steady capacity utilization in figure 14 from 2004 to 2007.

Figure 15 shows that total capacity and total output for paper mills decreased in 2007, compared with 2006 levels. The drop in total capacity between 2006 and 2007 was owing to the closure of two smaller mills. Overall, as shown in Figure 16, paper mill capacity utilization has been trending upwards since 1991, but has dropped since 2005 as total output has fallen at a faster rate than total capacity during this time period.

Table 3: British Columbia Pulp and Paper Mill Summary Statistics

	1991...	1995...	2000	2001	2002	2003	2004	2005	2006	2007	% change 1991-2007
Number of Pulp Mills	24	24	23	23	21	21	22	22	21	20	-17%
Total Capacity (thousand tonnes)	8,416	8,210	7,839	7,842	7,303	7,647	7,527	7,445	7,421	6,489	-23%
Total Output (thousand tonnes)	6,683	7,295	7,558	6,728	6,788	6,939	7,221	7,086	7,082	6,131	-8%
Total Fibre Input (thousand bone dry units)	11,761	12,748	13,438	11,959	11,577	11,825	12,282	12,367	11,792	10,647	-9%
Average Capacity (thousand tonnes)	351	342	341	341	348	364	342	338	353	324	1%
Average Fibre Input (thousand bone dry units)	490	531	584	520	551	563	558	562	562	532	15%
Capacity Utilization	79%	89%	96%	86%	93%	91%	96%	95%	95%	94%	20%
Number of Paper Mills	12	11	11	11	11	11	11	11	11	9	-25%
Total Capacity (thousand tonnes)	3,472	3,062	3,271	3,135	3,081	3,237	3,218	2,979	3,188	2,864	-18%
Total Output (thousand tonnes)	2,739	2,747	3,175	2,949	2,936	2,925	3,139	3,021	3,045	2,552	-7%
Average Capacity (thousand tonnes)	289	278	297	285	280	294	293	271	290	318	10%
Capacity Utilization	79%	90%	97%	94%	95%	90%	98%	101%	95%	89%	13%

Source: Major Primary Timber Processing Facilities in British Columbia, internal database, various years

Estimated annual capacity is based on a standardized operation of 345 operating days per year, 1 24-hour shift per day. Actual operations may vary from this schedule.

Pulp mills included in these statistics are those that use wood fibre input. A deinking pulp mill which uses other input, such as waste paper, is not included in the table.

**Figure 13: BC Pulp Mills
Capacity, Output and Input**

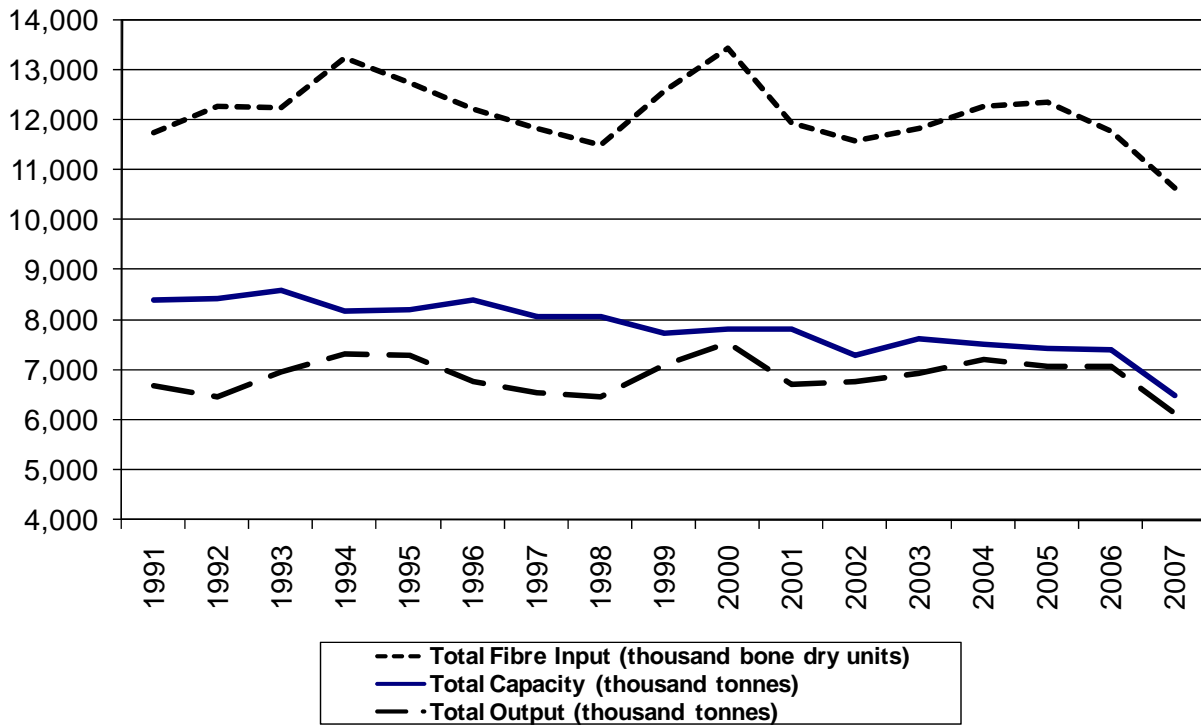
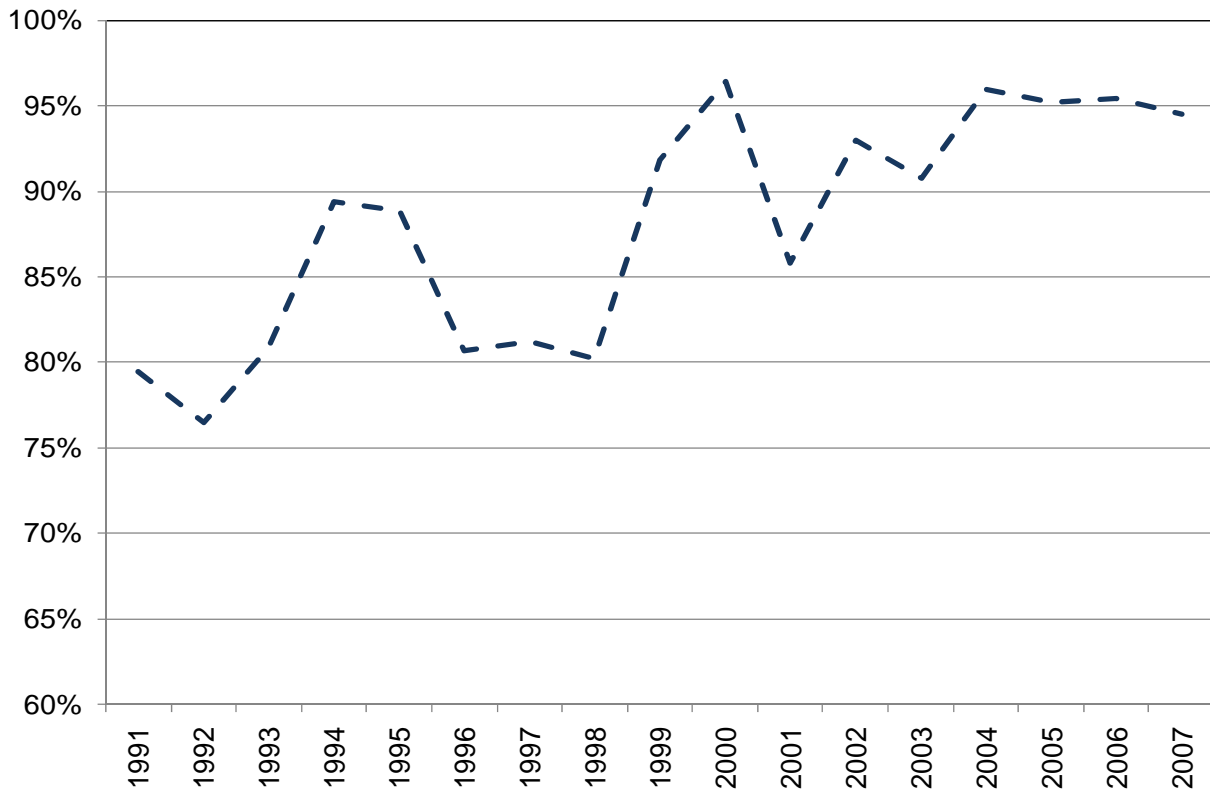
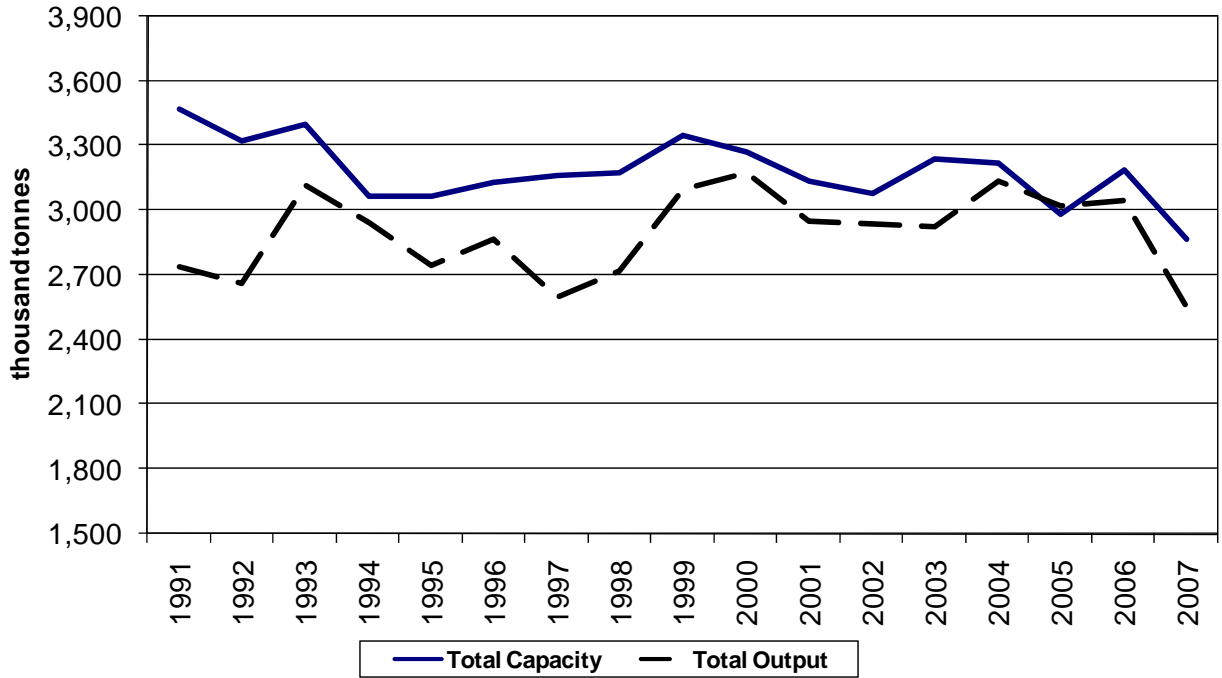


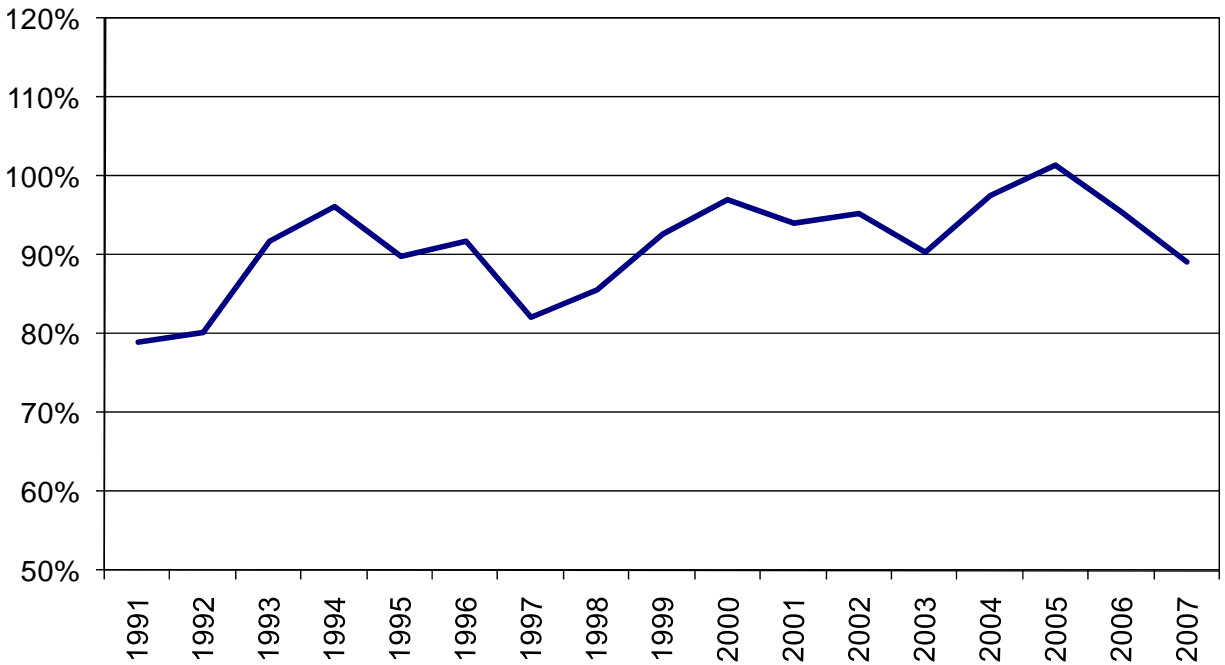
Figure 14: BC Pulp Mills Capacity Utilization



**Figure 15: BC Paper Mills
Capacity and Output**



**Figure 16: BC Paper Mills
Capacity Utilization**



4) Pellet Mills

Wood pellets are primarily used as wood fuel and are usually made from compacted sawdust. Pellets are produced from the byproducts of sawmilling and other wood transformation activities. Much of the pellet production from British Columbia is shipped to European countries.

This report shows 8 pellet mills operated in BC in 2007 at a similar level to 2006. It is estimated that the total capacity for these mills was 857,000 tonnes of pellets per year based on an operating schedule of three 8-hour shifts per day, 345 days per year. On average, mills ran at about 84% of capacity, producing about 728,000 tones of pellets in total in 2007. The fibre used to produce this volume of pellets was about 898,000 metric tonnes, largely in the form of sawdust, which is equivalent to 2.5 million cubic metres on a solid wood basis.

Related References

Industry Canada, Canadian Industry Statistics, www.ic.gc.ca/eic/site/cis-sic.nsf/eng/home

Natural Resources Canada, "The Atlas of Canada", available on the Internet at: <http://atlas.gc.ca/site/english/maps/environment/forest/useforest/sawmills>

Pulp and Paper Product Council, www.pppc.org

Resource Information Systems Inc. (RISI), www.risiinfo.com

Spelter, Henry, David McKeever, and Matthew Alderman, "Profile 2007: Softwood Sawmills in the United States and Canada", 2007, Research Paper FPL-RP-644. Madison, WI: U.S. Department of Agriculture, Forest Service, Forest Products Laboratory, www.treesearch.fs.fed.us/pubs/29847

Random Lengths, Daily WoodWire, www.rlpi.com/base.asp?s1=Daily_WoodWire

Wood Pellet Association of Canada, www.pellet.org

Appendix 1: Conversion of Lumber and Chips to Solid Wood Equivalent

Figure 2 of this report estimates the recovery of lumber, chips, sawdust and shavings from BC lumber mills. In order to do this, the output data collected in the mill surveys needs to be converted to its “solid wood equivalent” (SWE). The choice of lumber and chip conversion factors used in Figure 2 were reviewed and updated for the 2007 report. This section describes some of the issues considered.

1 Lumber conversion factors

Much of the data provided by mills for lumber is in nominal board feet. A board foot is the volume of a piece of wood 1 foot square and 1 inch thick. This is equivalent to 0.00236 cubic metres.⁴ Conversely, there are 424 board feet in 1 cubic metre. The nominal board feet must be converted to solid wood in order to analyze what share of the log is actually converted to lumber. The conversion factor will vary depending on the products manufactured. For example for dressed dried 2x4s under National Lumber Grades Authority (NLGA) rules the factor is 1.547 m³ per thousand board feet (mfbm)⁵ whereas for 2x6s the factor is 1.623 m³/mfbm (ibid). In the case of dried dressed lumber for the North American market the differences between the conversion factors for different dimensions are not more than +/- 5% for most of the output. However, for offshore specifications and some of the higher grades there can be substantial variations – particularly when full sized product is required. The output of lumber by region has changed over the years as markets have altered and log size has changed. Consequently, a review was undertaken to adjust the conversion factors to reflect, more accurately, current conditions. This review has resulted in the adoption of the following factors:
Interior 1.61 m³/mfbm; Coast 2.07 m³/mfbm

2 Shrinkage

When lumber is dried some volume is lost through shrinkage. Though this is relatively insignificant for the Coastal industry due to the limited volume that is dried, it accounts for about 2% of the total log in the Interior where a very high proportion of the output is dried and the above conversion factors are based on the actual size of dried lumber.

3 Chips

The conversion factors for m³ per BDU of chips depend on the species being processed. In the interior, with a high predominance of SPF, there has been little change in species share. Therefore the factor used previously is only marginally changed to 2.75 m³ per BDU (2,400 lbs). However, there has been some change in species mix on the Coast with higher proportions of cedar. Consequently, the new factor used for the Coast is 2.86 m³ per BDU.

⁴ 1 inch = 0.0254 metre. Therefore a board foot, 12 inches x 12 inches x 1 inch, equals (12x0.0254) x (12x0.0254) x 0.0254=0.00236 cubic metres.

⁵ Forintek Canada Corp., “Conversion Factors for the Forest Products Industry in Western Canada”, Special Publication No. SP-24R, 1985, page 32.

CHIP MILLS

(Listed Alphabetically)

Only mills that produce wood chips as a primary product are listed in this section.

Notes:

1. Measurement units are in thousands of bone dry units (000 BDUs).
2. Estimated annual capacity is based on a standardized operation of 240 days per year, two 8 hour shifts per day. Actual operations may vary from this schedule.

CHIP MILLS - 2007

Mill Number	Company	Location of Mill	Forest Region	Forest District	Estimated Annual Capacity (000s of BDUs)
446	Campbell River Fibre Ltd.	Campbell River	Coast	Campbell River	110
924	Chips Ahoy Fibre Supply	Mission	Coast	Chilliwack	37
345	DCT Chambers Trucking Ltd.	Chemainus	Coast	South Island	250
356	East Fraser Fibre Co Ltd.	Mackenzie	Northern Interior	Mackenzie	240
538	Fraser Pulp Chips Ltd.	Surrey	Coast	Chilliwack	20
409	Howe Sound Pulp & Paper Ltd.	Vancouver	Coast	Chilliwack	250
937	Pacific Fibre	Port Mellon	Coast	Sunshine Coast	149
952	River City Fibre	Kamloops	Southern Interior	Kamloops	121
18	Terminal Forest Products Ltd.	Langdale Dryland Sort	Coast	Sunshine Coast	90
68	Tolko Industries Ltd.	Armstrong	Southern Interior	Okanagan Shuswap	96
107	Tolko Industries Ltd.	Williams Lake	Southern Interior	Central Cariboo	60
394	Tolko Industries Ltd.	Heffley Creek	Southern Interior	Kamloops	96
183	West Fraser Mills Ltd.	Terrace	Northern Interior	Kalum	192

LOG HOME MILLS

(Listed Alphabetically)

Mills that process logs to manufacture log homes are listed in this section.

A throughput capacity measurement is not as meaningful for log home mills as it is for other types of primary timber processing mills. Therefore, this section does not include estimated annual capacity.

LOG HOME MILLS - 2007

Mill Number	Company	Location of Mill	Forest Region	Forest District
37	Arcadia Log Homes	Surrey	Coast	Chilliwack
190	Artisan Custom Log Construction Ltd.	Maple Ridge	Coast	Chilliwack
946	BearPaw Mountain Homes Ltd.	Prince George	Northern Interior	Prince George
38	Big Foot Manufacturing Inc.	Tappen	Southern Interior	Okanagan Shuswap
39	Big Rock Homes	Clearbrook	Coast	Chilliwack
458	Brian Moore Log Homes Ltd.	Abbotsford	Coast	Chilliwack
697	Caliga Log Homes Ltd.	93 Mile	Southern Interior	100 Mile House
694	Canada's Log People Ltd.	100 Mile House	Southern Interior	100 Mile House
260	Canadian Walden Log Homes Ltd.	Sardis	Coast	Chilliwack
208	Canalog Wood Industries Ltd	Cranbrook	Southern Interior	Rocky Mountain
522	Chinook Log Homes Ltd.	Bear Flats, Montney	Northern Interior	Peace
212	Custom Log Homes Ltd.	Salmon Arm	Southern Interior	Okanagan Shuswap
275	Granberg Construction Ltd.	Kamloops	Southern Interior	Kamloops
46	Hamill Creek Timberwrights	Meadow Creek	Southern Interior	Kootenay Lake
216	Ideal Export Log Homes Ltd.	Salmon Arm	Southern Interior	Okanagan Shuswap
218	Maurer Construction Ltd.	Penticton	Southern Interior	Okanagan Shuswap
391	Morgan Log Homes Ltd.	Hope	Coast	Chilliwack
49	Neville Log Homes Corporation	Kamloops	Southern Interior	Kamloops
230	Nicola Log Works Ltd.	Merritt	Southern Interior	Cascades
291	North American Log Crafters Ltd.	Celista	Southern Interior	Okanagan Shuswap
379	Old Yale Log Homes Ltd.	Sardis	Coast	Chilliwack
52	Original Log Homes Ltd.	100 Mile House	Southern Interior	100 Mile House

LOG HOME MILLS - 2007

Mill Number	Company	Location of Mill	Forest Region	Forest District
692	Pacific Log Homes Ltd.	Lone Butte	Southern Interior	100 Mile House
474	Pioneer Log Homes Ltd.	Williams Lake	Southern Interior	Central Cariboo
223	Radomske Log Homes Ltd	Kelowna	Southern Interior	Okanagan Shuswap
225	Rasmussen Log Homes Ltd.	Okanagan Falls	Southern Interior	Okanagan Shuswap
473	Reko Log Homes Ltd.	Quesnel	Southern Interior	Quesnel
954	Rocky Mountain Log Homes Canada Inc	Vanderhoof	Northern Interior	Vanderhoof
57	Roundwood Log Homes Ltd.	Prince George	Northern Interior	Prince George
693	Sitka Log Homes Ltd.	100 Mile House	Southern Interior	100 Mile House
509	Ski Lumber Ltd.	Valemount	Southern Interior	Headwaters
58	Sperlich Log Construction Inc	Enderby	Southern Interior	Okanagan Shuswap
695	Superior Log Homes Ltd.	93 Mile	Southern Interior	100 Mile House
423	Surelog Homes Ltd.	Tappen	Southern Interior	Okanagan Shuswap
602	T.L. Timber Ltd.	Cawston	Southern Interior	Okanagan Shuswap
59	Tall Timber Log Builders	Abbotsford	Coast	Chilliwack
60	Top Notch Log Construction	Victoria	Coast	South Island
245	Traditional Log Homes Ltd.	Salmon Arm	Southern Interior	Okanagan Shuswap
63	West Coast Log Homes	Gibsons	Coast	Sunshine Coast
267	Whitevalley Log Homes Ltd.	Cherryville	Southern Interior	Okanagan Shuswap
698	Wildwood Forest Products Ltd.	Williams Lake	Southern Interior	Central Cariboo

LUMBER MILLS

(Listed Alphabetically)

Mills producing lumber are reported in the following 2 sections:

- a) Mills that have estimated annual capacity of more than 10 million board feet of lumber.
- b) Mills that have estimated annual capacity of less than 10 million board feet of lumber.

Notes:

- 1. Measurement units are in millions of board feet.
- 2. Estimated annual capacity is based on a standardized operation of 240 days per year, two 8 hour shifts per day. Actual mill operations may vary from this schedule.

THE FOLLOWING MILLS HAD CAPACITY OF MORE THAN 10 MILLION BOARD FEET OF LUMBER IN 2007

Mill Number	Company	Location of Mill	Forest Region	Forest District	Estimated Annual Capacity (millions of board feet)
9	A.J. Forest Products Ltd.	Brackendale	Coast	Squamish	16
5	Abfam Enterprises Ltd.	Port Clements	Coast	Queen Charlotte	24
128	Abitibi-Consolidated Company of Canada	Mackenzie	Northern Interior	Mackenzie	194
129	Abitibi-Consolidated Company of Canada	Mackenzie	Northern Interior	Mackenzie	119
8	Andersen Pacific Forest Products Ltd	Ruskin	Coast	Chilliwack	24
137	Apollo Forest Products Ltd.	Fort St James	Northern Interior	Fort St James	134
207	Ardew Wood Products Ltd.	Merritt	Southern Interior	Cascades	65
498	Aspen Planers Ltd.	Merritt	Southern Interior	Cascades	192
213	Babine Forest Products Limited	Burns Lake	Northern Interior	Nadina	320
10	BC Custom Timber Products Ltd.	Vanderhoof	Northern Interior	Vanderhoof	14
917	Burns Lake Community Forest	Burns Lake	Northern Interior	Nadina	11
252	C & C Wood Products Ltd.	Quesnel	Southern Interior	Quesnel	28
64	Canadian Forest Products Ltd.	Vavenby	Southern Interior	Headwaters	165
90	Canadian Forest Products Ltd.	Radium Hot Sprgs	Southern Interior	Rocky Mountain	181
97	Canadian Forest Products Ltd.	Prince George	Northern Interior	Prince George	119
110	Canadian Forest Products Ltd.	Quesnel	Southern Interior	Quesnel	264
122	Canadian Forest Products Ltd.	Fort St John	Northern Interior	Peace	209
127	Canadian Forest Products Ltd.	Chetwynd	Northern Interior	Peace	209
130	Canadian Forest Products Ltd.	Mackenzie	Northern Interior	Mackenzie	255
135	Canadian Forest Products Ltd.	Isle Pierre	Northern Interior	Prince George	188
140	Canadian Forest Products Ltd.	Engen	Northern Interior	Vanderhoof	372
153	Canadian Forest Products Ltd.	Prince George	Northern Interior	Prince George	258
160	Canadian Forest Products Ltd.	Bear Lake	Northern Interior	Prince George	132
166	Canadian Forest Products Ltd.	Prince George	Northern Interior	Prince George	240
193	Canadian Forest Products Ltd.	Houston	Northern Interior	Nadina	480
150	Carrier Lumber Ltd.	Prince George	Northern Interior	Prince George	228
737	Cheslatta Forest Products Ltd.	Ootsa Lake	Northern Interior	Nadina	100
377	Coulson Manufacturing Ltd	Port Alberni	Coast	South Island	31
326	Delta Cedar Products Ltd.	Delta	Coast	Chilliwack	38
45	Downie Timber Ltd.	Revelstoke	Southern Interior	Columbia	120
158	Dunkley Lumber Ltd.	Strathnaver	Northern Interior	Prince George	552
301	Errington Cedar Products Ltd.	Errington	Coast	South Island	18
12	Federated Co-op Ltd.	Canoe	Southern Interior	Okanagan Shuswap	168
953	First Forest Products Ltd	Prince George	Northern Interior	Prince George	24
714	Franklin Forest Products Ltd.	Port Alberni	Coast	South Island	22
538	Fraser Pulp Chips Ltd.	Surrey	Coast	Chilliwack	25
86	Galloway Lumber Co. Ltd.	Galloway	Southern Interior	Rocky Mountain	60
66	Gilbert Smith For Prod Ltd.	Barriere	Southern Interior	Kamloops	42
537	Goldwood Industries Ltd.	Richmond	Coast	Chilliwack	58

THE FOLLOWING MILLS HAD CAPACITY OF MORE THAN 10 MILLION BOARD FEET OF LUMBER IN 2007

Mill Number	Company	Location of Mill	Forest Region	Forest District	Estimated Annual Capacity (millions of board feet)
14	Gorman Bros Lumber Ltd.	Westbank	Southern Interior	Okanagan Shuswap	108
172	Hauer Bros. Lumber Ltd.	Tete Jaune Cache	Southern Interior	Headwaters	17
30	International Forest Products Ltd.	Grand Forks	Southern Interior	Arrow Boundary	122
62	International Forest Products Ltd.	Castlegar	Southern Interior	Arrow Boundary	245
70	International Forest Products Ltd.	Adams Lake	Southern Interior	Kamloops	160
283	International Forest Products Ltd.	Delta	Coast	Chilliwack	192
297	International Forest Products Ltd.	Hammond	Coast	Chilliwack	192
461	International Forest Products Ltd.	New Westminster	Coast	Chilliwack	120
88	J H Huscroft Ltd.	Erickson	Southern Interior	Kootenay Lake	50
100	J.S. Jones	Surrey	Coast	Chilliwack	125
47	Joe Kozek Sawmills Ltd.	Revelstoke	Southern Interior	Columbia	14
50	Kalesnikoff Lumber Co. Ltd.	Thrusms	Southern Interior	Arrow Boundary	72
184	Kitwanga Mills Ltd.	Kitwanga	Northern Interior	Skeena Stikine	77
144	L & M Lumber Ltd.	Vanderhoof	Northern Interior	Vanderhoof	188
149	Lakeland Mills Ltd.	Prince George	Northern Interior	Prince George	144
597	Lakeside Timber (2007) Ltd.	Tappen	Southern Interior	Okanagan Shuswap	14
712	Long Hoh Enterprises Canada Ltd	Qualicum Beach	Coast	South Island	48
116	Lytton Lumber Ltd.	Lytton	Southern Interior	Cascades	60
361	Mackenzie Sawmill Ltd.	Surrey	Coast	Chilliwack	48
169	McBride Forest Ind. Ltd.	McBride	Southern Interior	Headwaters	22
603	Meadow Creek Cedar Ltd.	Cooper Creek	Southern Interior	Kootenay Lake	48
336	Mill & Timber Products Ltd.	Port Moody	Coast	Chilliwack	77
403	Mill & Timber Products Ltd.	Surrey	Coast	Chilliwack	60
22	Noble Custom Cut Ltd.	Whonnock	Coast	Chilliwack	33
618	North Enderby Timber Ltd.	Enderby	Southern Interior	Okanagan Shuswap	29
710	Northern Lumber Solutions Ltd	Prince George	Northern Interior	Prince George	19
713	Paragon Ventures Ltd.	Lumby	Southern Interior	Okanagan Shuswap	48
732	PG Sort Yard	Prince George	Northern Interior	Prince George	19
133	Pope & Talbot Ltd.	Fort St James	Northern Interior	Fort St James	276
626	Porcupine Wood Products Ltd.	Salmo	Southern Interior	Arrow Boundary	41
454	S & R Sawmills Ltd.	Surrey	Coast	Chilliwack	192
480	Schapol Logging Ltd.	Enderby	Southern Interior	Okanagan Shuswap	12
740	Sigurdson Bros. Logging Company	Hanceville	Southern Interior	Chilcotin	72
750	Sigurdson Bros. Logging Company	Williams Lake	Southern Interior	Central Cariboo	72
631	Silvermere Forest Prod Ltd.	Ruskin	Coast	Chilliwack	17
55	Springer Creek Forest Products	Slocan	Southern Interior	Arrow Boundary	118
539	Stag Timber Ltd.	Surrey	Coast	Chilliwack	77
136	Stuart Lake Lumber Co. Ltd.	Fort St James	Northern Interior	Fort St James	132
24	Suncoast Lumber and Milling	Sechelt	Coast	Sunshine Coast	10

THE FOLLOWING MILLS HAD CAPACITY OF MORE THAN 10 MILLION BOARD FEET OF LUMBER IN 2007

Mill Number	Company	Location of Mill	Forest Region	Forest District	Estimated Annual Capacity (millions of board feet)
79	Tembec Industries Ltd.	Canal Flats	Southern Interior	Rocky Mountain	182
82	Tembec Industries Ltd.	Elko	Southern Interior	Rocky Mountain	168
396	Terminal Forest Products Ltd.	Vancouver	Coast	Chilliwack	204
540	Terminal Forest Products Ltd.	Richmond	Coast	Chilliwack	192
330	TimberWest Forest Corp.	Campbell River	Coast	Campbell River	118
20	Tolko Industries Ltd.	Lavington	Southern Interior	Okanagan Shuswap	150
25	Tolko Industries Ltd.	Merritt	Southern Interior	Cascades	186
67	Tolko Industries Ltd.	Kelowna	Southern Interior	Okanagan Shuswap	144
68	Tolko Industries Ltd.	Armstrong	Southern Interior	Okanagan Shuswap	228
98	Tolko Industries Ltd.	Quesnel	Southern Interior	Quesnel	148
101	Tolko Industries Ltd.	Williams Lake	Southern Interior	Central Cariboo	254
103	Tolko Industries Ltd.	Williams Lake	Southern Interior	Central Cariboo	261
107	Tolko Industries Ltd.	Williams Lake	Southern Interior	Central Cariboo	118
453	Twin River Cedar Products Ltd.	Ruskin	Coast	Chilliwack	43
639	West Chilcotin Forest Products Ltd.	Anahim Lake	Southern Interior	Chilcotin	106
95	West Fraser Mills Ltd.	100 Mile House	Southern Interior	100 Mile House	237
113	West Fraser Mills Ltd.	Quesnel	Southern Interior	Quesnel	298
114	West Fraser Mills Ltd.	Williams Lake	Southern Interior	Central Cariboo	150
181	West Fraser Mills Ltd.	Burns Lake	Northern Interior	Nadina	96
183	West Fraser Mills Ltd.	Terrace	Northern Interior	Kalum	168
191	West Fraser Mills Ltd.	Smithers	Northern Interior	Skeena Stikine	202
214	West Fraser Mills Ltd.	Clinton	Southern Interior	100 Mile House	206
526	West Fraser Mills Ltd.	Quesnel	Southern Interior	Quesnel	165
530	West Fraser Mills Ltd.	Houston	Northern Interior	Nadina	240
532	West Fraser Mills Ltd.	LeJac	Northern Interior	Vanderhoof	240
552	West Fraser Mills Ltd.	Chetwynd	Northern Interior	Peace	254
298	Western Forest Products	Delta	Coast	Chilliwack	53
320	Western Forest Products	Cowichan Bay	Coast	South Island	151
376	Western Forest Products	Ladysmith	Coast	South Island	127
392	Western Forest Products	Port Alberni	Coast	South Island	61
393	Western Forest Products	Chemainus	Coast	South Island	82
528	Western Forest Products	Port Alberni	Coast	South Island	101
531	Western Forest Products	Nanaimo	Coast	South Island	144
546	Western Forest Products	Duke Point	Coast	South Island	122
442	Western Forest Products Ltd.	Ladysmith	Coast	South Island	90
27	Weyerhaeuser Company Ltd.	Okanagan Falls	Southern Interior	Okanagan Shuswap	142
29	Weyerhaeuser Company Ltd.	Princeton	Southern Interior	Cascades	155
74	Weyerhaeuser Company Ltd.	Mission Flats	Southern Interior	Kamloops	143
162	Winton Global	Bear Lake	Northern Interior	Prince George	216
672	Woodland Forest Products Ltd	Prince George	Northern Interior	Prince George	29
93	Wynndel Box & Lumber Co. Ltd.	Wynndel	Southern Interior	Kootenay Lake	72

THE FOLLOWING MILLS HAD CAPACITY OF LESS THAN 10 MILLION BOARD FEET OF LUMBER IN 2007

Mill Number	Company	Location of Mill	Forest Region	Forest District	Estimated Annual Capacity (millions of board feet)
715	100 Mile Wood Products	100 Mile House	Southern Interior	100 Mile House	3.8
643	Bear Lumber Ltd.	Cranbrook	Southern Interior	Rocky Mountain	4.3
445	Beaver Forest Products Ltd	Campbell River	Coast	Campbell River	1.9
905	Blacktail Enterprises	Black Creek	Coast	Campbell River	0.5
16	Cascades West Forest Products Inc.	Hatzic	Coast	Chilliwack	4.8
738	Chalwood Forest Products LTD.	Port Alberni	Coast	South Island	7.2
742	Corwood Timber Products Ltd.	Houston	Northern Interior	Nadina	8.3
719	Dale Edwards	Ucluelet	Coast	South Island	0.5
741	Dove Creek Timber Corp.	Courtenay	Coast	Campbell River	9.6
11	Eagle River Industries Inc.	Malakwa	Southern Interior	Okanagan Shuswap	6.1
26	Edge Grain Cedar	Maple Ridge	Coast	Chilliwack	0.5
717	Edgegrain	Campbell River	Coast	Campbell River	1.0
734	Enid Lake Logging Ltd.	Invermere	Southern Interior	Rocky Mountain	1.4
679	G.C. Williams Milling	Malcolm Island	Coast	North Island - Central Coast	1.4
32	Gibbs Custom Sawmill	McBride	Southern Interior	Headwaters	1.4
399	Goat Lake Forest Products	Lang Bay	Coast	Sunshine Coast	8.6
567	Green Forest Products Ltd.	Merville	Coast	Campbell River	1.4
705	Heartwood Ventures	Cumberland	Coast	Campbell River	0.5
286	Hilmoe Forest Products Ltd.	Rock Creek	Southern Interior	Arrow Boundary	9.1
708	Island Pacific Wood Products	Tahsis	Coast	Campbell River	2.5
512	Jemico Enterprises Ltd.	Chemainus	Coast	South Island	8.2
743	John Salo	Sointula	Coast	North Island - Central Coast	0.5
247	Jones Ties and Poles (1978) Ltd.	Rossland	Southern Interior	Arrow Boundary	7.2
255	Larry Buff Sawmills Ltd.	Westwold	Southern Interior	Okanagan Shuswap	9.6

THE FOLLOWING MILLS HAD CAPACITY OF LESS THAN 10 MILLION BOARD FEET OF LUMBER IN 2007

Mill Number	Company	Location of Mill	Forest Region	Forest District	Estimated Annual Capacity (millions of board feet)
702	Linde Bros Lumber Ltd.	Williams Lake	Southern Interior	Central Cariboo	7.2
542	Marsh Bros Lumber and Supply Ltd.	McBride	Southern Interior	Headwaters	7.2
197	McDonald Ranch & Lumber Ltd.	Grasmere	Southern Interior	Rocky Mountain	7.2
194	Mike Gogo Cedar Products	Nanaimo	Coast	South Island	1.4
408	Nagaard Sawmills Ltd.	Port Alberni	Coast	South Island	7
199	North Star Planing Co. Ltd.	Athalmer	Southern Interior	Rocky Mountain	3.8
482	Notch Hill Forest Products Ltd.	Sorrento	Southern Interior	Okanagan Shuswap	1.0
535	Pro Cut Lumber Corp.	Lk Cowichan Hwy	Coast	South Island	1.4
582	Quadra Island Forest Products Ltd.	Quadra Island	Coast	Campbell River	2.9
744	Rainbow Lumber	Whiskey Creek	Coast	South Island	2.4
271	Rouck Brothers Sawmill Ltd.	Lumby	Southern Interior	Okanagan Shuswap	5.8
907	Saratoga Speedway Mills	Campbell River	Coast	Campbell River	1.4
731	SCG Forest Inc.	Courtenay	Coast	Campbell River	2.4
730	Select Timbers Corp.	Courtenay	Coast	Campbell River	1.0
23	Shannon Lumber	Mission	Coast	Chilliwack	5.8
514	Simpcw Development Co Ltd.	Barriere	Southern Interior	Kamloops	4.8
654	Spike Top Cedar Ltd.	Port Hardy	Coast	North Island - Central Coast	1.0
602	T.L. Timber Ltd.	Cawston	Southern Interior	Okanagan Shuswap	9.6
96	Thomson Bros. Lumber Co. Ltd.	Courtenay	Coast	Campbell River	4.8
99	Ukass Logging Ltd.	Wilmer Creek	Southern Interior	Rocky Mountain	3.8
229	Wadlegger Log & Constr. Co.	Raft River	Southern Interior	Headwaters	4.8
716	Westcoast Wood'n Ventures	Port Hardy	Coast	North Island - Central Coast	1.0
684	Whisper Corwood, LP	McBride	Southern Interior	Headwaters	9.6
698	Wildwood Forest Products Ltd.	Williams Lake	Southern Interior	Central Cariboo	2.4
347	Ye' Old Dogwood Lumber	Cowichan Lake	Coast	South Island	1.9

PELLET MILLS

(Listed Alphabetically)

Mills producing wood pellets for bio-energy are listed in this section.

Notes:

1. Measurement units are in thousands of tonnes.
2. Estimated annual capacity for pellet mills is based on a standardized operation of 345 days per year, three 8 hour shifts per day. Actual operations may vary from these schedules.

PELLET MILLS - 2007

Mill Number	Company	Location of Mill	Forest Region	Forest District	Estimated Annual Capacity ('000s of tonnes)
929	Armstrong Pellet Inc.	Armstrong	Southern Interior	Okanagan Shuswap	50
930	Pacific BioEnergy	Prince George	Northern Interior	Prince George	166
931	Pinnacle Pellet Inc.	Quesnel	Southern Interior	Quesnel	90
947	Pinnacle Pellet Inc.	Houston	Northern Interior	Nadina	150
948	Pinnacle Pellet Inc.	Williams Lake	Southern Interior	Central Cariboo	115
932	Premium Pellet Ltd.	Vanderhoof	Northern Interior	Vanderhoof	130
933	Princeton Co-Generation Corp	Princeton	Southern Interior	Cascades	90
935	Westwood Fibre Products	Westbank	Southern Interior	Okanagan Shuswap	66

POLE AND POST MILLS

(Listed Alphabetically)

Mills producing poles and posts are listed in this section.

Notes:

1. Measurement units are in thousands of pieces ('000 pcs).
2. Estimated annual capacity is based on a standardized operation of 240 days per year, one 8 hour shift per day, although actual mill operations may vary from this schedule.

UTILITY POLE MILLS - 2007

Mill Number	Company	Location of Mill	Product	Forest Region	Forest District	Estimated Annual Capacity ('000s of pieces)
48	Bell Pole Company	Revelstoke	UTI	Southern Interior	Columbia	36
659	Brisco Wood Preservers Ltd.	Brisco	UTI	Southern Interior	Rocky Mountain	26
556	Chinook Forest Products Ltd.	Courtenay	UTI	Coast	Campbell River	19
40	Gorman Bros Lumber Ltd.	Lumby	UTI	Southern Interior	Okanagan Shuswap	29
724	Integrated Pole	100 Mile House	UTI	Southern Interior	100 Mile House	11
222	Kanaka Creek Pole Company	Haney	UTI	Coast	Chilliwack	24
725	O'Brien & Fuerst Logging Ltd.	Port Clements	UTI	Coast	Queen Charlotte	19
677	Pacific Inland Pole & Piling Ltd.	Nakusp	UTI	Southern Interior	Arrow Boundary	18
188	Paterson Pole Ltd.	Rossland	UTI	Southern Interior	Arrow Boundary	36
232	Princeton Wood Preservers Ltd	Princeton	UTI	Southern Interior	Cascades	29
619	Quinton Bros.	Caven	UTI	Southern Interior	Rocky Mountain	19
648	Selkirk Forest Products Ltd.	Galloway	UTI	Southern Interior	Rocky Mountain	31
728	Sierra Cascade Resources II L.L.C.	Port McNeill	UTI	Coast	North Island - Central Coast	6
729	Sierra Cascade Resources II L.L.C.	Kelsey Bay Division	UTI	Coast	Campbell River	6
637	Stella-Jones Inc.	Prince George	UTI	Northern Interior	Prince George	55
181	West Fraser Mills Ltd.	Burns Lake	UTI	Northern Interior	Nadina	24

OTHER POLE AND POST MILLS - 2007

Mill Number	Company	Location of Mill	Product	Forest Region	Forest District	Estimated Annual Capacity ('000s of pieces)
498	Aspen Planers Ltd.	Merritt	PLE	Southern Interior	Cascades	960
498	Aspen Planers Ltd.	Merritt	PST	Southern Interior	Cascades	480
390	Box Lake Lumber Prod Ltd	Nakusp	PST	Southern Interior	Arrow Boundary	168
556	Chinook Forest Products Ltd.	Courtenay	PST	Coast	Campbell River	5
117	Continental Pole Ltd.	Pemberton	PLE	Coast	Squamish	12
724	Integrated Pole	100 Mile House	PLE	Southern Interior	100 Mile House	11
721	Mego Wood Products (1989) Ltd.	Princeton	PST	Southern Interior	Cascades	480
721	Mego Wood Products (1989) Ltd.	Merritt	PLE	Southern Interior	Cascades	960
607	Monte Lake Forest Products Inc.	Monte Lake	PST	Southern Interior	Okanagan Shuswap	1800
250	Nicola Post and Rail Co. Ltd.	Merritt	PST	Southern Interior	Cascades	480
677	Pacific Inland Pole & Piling Ltd.	Nakusp	PLE	Southern Interior	Arrow Boundary	12
279	Palmer Bar Holdings Inc.	Lumberton	PST	Southern Interior	Rocky Mountain	1200
279	Palmer Bar Holdings Inc.	Lumberton	PLE	Southern Interior	Rocky Mountain	96
739	Panhandle Forest Products	Lumberton	PST	Southern Interior	Rocky Mountain	480
237	Princeton Post and Rail Co. Ltd.	Princeton	PST	Southern Interior	Cascades	528
237	Princeton Post and Rail Co. Ltd.	Princeton	PLE	Southern Interior	Cascades	144
232	Princeton Wood Preservers Ltd	Princeton	PST	Southern Interior	Cascades	720
619	Quinton Bros.	Caven	PST	Southern Interior	Rocky Mountain	600
343	TRC Cedar Ltd.	McBride	PST	Southern Interior	Headwaters	600
181	West Fraser Mills Ltd.	Burns Lake	PLE	Northern Interior	Nadina	6

PULP AND PAPER MILLS

(Listed Alphabetically)

Mills producing pulp and paper are listed in this section. For integrated mills, pulp capacity includes pulp that is used internally to produce paper, and pulp that is shipped from the mill site as market pulp.

Notes:

1. Measurement units are in thousands of tonnes.
2. Estimated annual capacity is based on a standardized operation of 345 operating days per year, 24 hours per day. Actual operations may vary from this schedule.

PULP AND PAPER MILLS - 2007

Mill Number	Company	Location of Mill	Product	Forest Region	Forest District	Estimated Annual Capacity (000s of tonnes)
128	Abitibi-Consolidated Company of Canada	Mackenzie	PLP	Northern Interior	Mackenzie	217
128	Abitibi-Consolidated Company of Canada	Mackenzie	PPR	Northern Interior	Mackenzie	156
500	Canadian Forest Products Ltd.	Prince George	PLP	Northern Interior	Prince George	147
500	Canadian Forest Products Ltd.	Prince George	PPR	Northern Interior	Prince George	129
503	Canadian Forest Products Ltd.	Prince George	PLP	Northern Interior	Prince George	567
960	Canadian Forest Products Ltd. (Intercon Div.	Prince George	PLP	Northern Interior	Prince George	297
335	Canfor Taylor Pulp	Taylor	PLP	Northern Interior	Peace	210
497	Cariboo Pulp & Paper Co. Ltd.	Quesnel	PLP	Southern Interior	Quesnel	328
206	Catalyst Paper	Coquitlam	PLP	Coast	Chilliwack	138
330	Catalyst Paper	Duncan Bay	PLP	Coast	Campbell River	182
330	Catalyst Paper	Duncan Bay	PPR	Coast	Campbell River	633
483	Catalyst Paper	Crofton	PLP	Coast	South Island	678
483	Catalyst Paper	Crofton	PPR	Coast	South Island	365
486	Catalyst Paper	Powell River	PPR	Coast	Sunshine Coast	432
487	Catalyst Paper	Port Alberni	PLP	Coast	South Island	168
487	Catalyst Paper	Port Alberni	PPR	Coast	South Island	319
2	Domtar Inc.	Kamloops	PLP	Southern Interior	Kamloops	460
496	Eurocan Pulp & Paper Co.	Kitimat	PLP	Northern Interior	Kalum	449
496	Eurocan Pulp & Paper Co.	Kitimat	PPR	Northern Interior	Kalum	464
484	Howe Sound Pulp & Paper Ltd.	Port Mellon	PLP	Coast	Sunshine Coast	656
484	Howe Sound Pulp & Paper Ltd.	Port Mellon	PPR	Coast	Sunshine Coast	242
491	Kruger Products Ltd.	New Westminster	PLP	Coast	Chilliwack	31
491	Kruger Products Ltd.	New Westminster	PPR	Coast	Chilliwack	124
489	Neucel Specialty Cellulose	Port Alice	PLP	Coast	North Island - Central Coast	173
488	Pope & Talbot Ltd.	Cedar	PLP	Coast	South Island	407
505	Pope & Talbot Ltd.	Mackenzie	PLP	Northern Interior	Mackenzie	250
553	Quesnel River Pulp Co.	Quesnel	PLP	Southern Interior	Quesnel	346
1	Tembec Industries Ltd.	Skookumchuk	PLP	Southern Interior	Rocky Mountain	250
205	Tembec Industries Ltd.	Chetwynd	PLP	Northern Interior	Peace	207
501	Zellstoff Celgar Limited Partnership	Castlegar	PLP	Southern Interior	Arrow Boundary	466

SHAKE AND SHINGLE MILLS

(Listed Alphabetically)

Mills that produce shake and shingles are listed in this section.

Notes:

1. Measurement units are in thousands of roofing squares ('000 sq). A roofing square is approximately 100 square feet.
2. Estimated annual capacity is based on a standardized operation of 240 days per year, two 8 hour shifts per day. Actual mill operations may vary from this schedule.

SHAKE AND SHINGLE MILLS - 2007

Mill Number	Company	Location of Mill	Forest Region	Forest District	Estimated Annual Capacity ('000s of squares)
673	Anbrook Industries Ltd.	Pitt Meadows	Coast	Chilliwack	94
288	B C F Shake Mill Ltd.	Fanny Bay	Coast	South Island	48
688	Best Quality Cedar Products Ltd	Maple Ridge	Coast	Chilliwack	168
706	Bill Little Contracting Ltd	Campbell River	Coast	Campbell River	8
449	Campbell River Shake and Shingle Co Ltd	Campbell River	Coast	Campbell River	5
583	Coast Mountain Cedar Products	Mission	Coast	Chilliwack	103
315	Comox Valley Shakes Ltd.	Campbell River	Coast	Campbell River	58
638	Confederate Shake & Shingle Ltd.	Youbou	Coast	South Island	19
69	Copper Mountain Cedar Products	Terrace	Northern Interior	Kalum	8
587	G & R Cedar Ltd.	Matsqui	Coast	Chilliwack	84
399	Goat Lake Forest Products	Powell River	Coast	Sunshine Coast	58
671	Graham Island Forest Products Ltd.	Masset	Coast	Queen Charlotte	38
72	Imperial Shake Co Ltd	Maple Ridge	Coast	Chilliwack	216
599	J & D Shake & Cedar Mill Ltd	Mission	Coast	Chilliwack	77
321	J & D Shake and Cedar Mill Ltd.	Duncan	Coast	South Island	72
687	Maple Leaf Shake and Shingle Ltd.	Maple Ridge	Coast	Chilliwack	101
711	Port Hardy Merchandising Ltd.	Port Hardy	Coast	North Island - Central Coast	24
460	Port McNeill Shake & Shingles (2007) Ltd.	Port McNeill	Coast	North Island - Central Coast	24
266	Premium Cedar Products Ltd.	Ruskin	Coast	Chilliwack	120
374	Remco Shake & Shingle Prod Ltd.	Cooper Creek	Southern Interior	Kootenay Lake	18
455	S & W Shake & Shingle Ltd.	Ruskin	Coast	Chilliwack	125
167	Seltic-Sherwen Shake/Shingle Ltd.	Menzies Bay	Coast	Campbell River	12
591	Serpentine Cedar Ltd.	Fort Langley	Coast	Chilliwack	58
612	Silver Creek Premium Products	Mission	Coast	Chilliwack	336
631	Silvermere Forest Prod Ltd.	Ruskin	Coast	Chilliwack	24
902	Taylor Contracting	Zeballos	Coast	Campbell River	12
106	Teal Cedar Prod (1977) Ltd.	Surrey	Coast	Chilliwack	336
722	Titan Ridge	Port McNeill	Coast	North Island - Central Coast	155
723	Vancouver Island Shake and Shingle	Port McNeill	Coast	North Island - Central Coast	12
691	W. Boyes Shake and Shingle Ltd.	Gateway	Southern Interior	100 Mile House	15
464	Waldun Forest Products Ltd.	Ruskin	Coast	Chilliwack	197

VENEER, PLYWOOD, OSB AND OTHER PANEL MILLS

(Listed Alphabetically)

Mills producing veneer, plywood and other types of panel are listed in this section. For mills that produce both market veneer and plywood, veneer capacity includes market veneer and the veneer that is used within the mill to manufacture plywood. Panel mills that use wood residuals to produce panels or that do not have log-processing capability are also listed in this report.

Notes:

1. Measurement units are in millions of square feet, 3/8" basis (mill. sq. ft., 3/8").
2. Estimated annual capacity for veneer mills is based on a standardized operation of 240 days per year, two 8 hour shifts per day. For plywood mills, estimated annual capacity is based on a standardized operation of 240 days per year, three 8 hour shifts per day. For OSB and other Panel mills, estimated annual capacity is based on a standardized operation of 345 days per year, three 8 hour shifts per day. Actual operations may vary from these schedules.

VENEER, PLYWOOD, OSB AND OTHER PANEL MILLS - 2007

Mill Number	Company	Location of Mill	Product	Forest Region	Forest District	Estimated Annual Capacity (million sq. ft, 3/8" basis)
109	Ainsworth Lumber Co. Ltd.	Savona	PLY	Southern Interior	Kamloops	132
115	Ainsworth Lumber Co. Ltd.	Lillooet	VNR	Southern Interior	Cascades	119
411	Ainsworth Lumber Co. Ltd.	100 Mile House	OSB	Southern Interior	100 Mile House	428
51	Atco Wood Products	Fruitvale	VNR	Southern Interior	Arrow Boundary	108
34	B C Veneer Products Ltd	Surrey	VNR	Coast	Chilliwack	24
121	Canadian Forest Products Ltd.	Fort Nelson	PLY	Northern Interior	Fort Nelson	202
121	Canadian Forest Products Ltd.	Fort Nelson	VNR	Northern Interior	Fort Nelson	206
151	Canadian Forest Products Ltd.	Prince George	PLY	Northern Interior	Prince George	184
151	Canadian Forest Products Ltd.	Prince George	VNR	Northern Interior	Prince George	120
459	Canadian Forest Products Ltd.	Fort Nelson	OSB	Northern Interior	Fort Nelson	674
536	Canadian Forest Products Ltd.	New Westminster	PNL	Coast	Chilliwack	33
246	Canpar Industries Ltd	Grand Forks	PNL	Southern Interior	Arrow Boundary	282
508	CIPA Lumber Co. Ltd.	Annacis Island	VNR	Coast	Chilliwack	250
244	Coastland Wood Industries Ltd.	Nanaimo	VNR	Coast	South Island	213
12	Federated Co-op Ltd.	Canoe	PLY	Southern Interior	Okanagan Shuswap	158
12	Federated Co-op Ltd.	Canoe	VNR	Southern Interior	Okanagan Shuswap	144
84	Louisiana Pacific Canada Ltd.	Golden	PLY	Southern Interior	Columbia	137
84	Louisiana Pacific Canada Ltd.	Golden	VNR	Southern Interior	Columbia	123
650	Louisiana Pacific Canada Ltd.	Dawson Creek	OSB	Northern Interior	Peace	388
357	Northern Engineering Wood Products Inc.	Smithers	PNL	Northern Interior	Skeena Stikine	94
942	Peace Valley OSB	Fort St John	OSB	Northern Interior	Peace	774
478	Richmond Plywood Corp. Ltd.	Richmond	PLY	Coast	Chilliwack	227
478	Richmond Plywood Corp. Ltd.	Richmond	VNR	Coast	Chilliwack	173
35	Tolko Industries Ltd.	Lumby	VNR	Southern Interior	Okanagan Shuswap	182
67	Tolko Industries Ltd.	Kelowna	PLY	Southern Interior	Okanagan Shuswap	161
67	Tolko Industries Ltd.	Kelowna	VNR	Southern Interior	Okanagan Shuswap	173
68	Tolko Industries Ltd.	Armstrong	PLY	Southern Interior	Okanagan Shuswap	180
68	Tolko Industries Ltd.	Armstrong	VNR	Southern Interior	Okanagan Shuswap	106
394	Tolko Industries Ltd.	Heffley Creek	PLY	Southern Interior	Kamloops	187
394	Tolko Industries Ltd.	Heffley Creek	VNR	Southern Interior	Kamloops	138
105	West Fraser Mills Ltd.	Williams Lake	PLY	Southern Interior	Central Cariboo	193
105	West Fraser Mills Ltd.	Williams Lake	VNR	Southern Interior	Central Cariboo	126
112	West Fraser Mills Ltd.	Quesnel	PLY	Southern Interior	Quesnel	207
112	West Fraser Mills Ltd.	Quesnel	VNR	Southern Interior	Quesnel	146
113	West Fraser Mills Ltd.	Quesnel	PNL	Southern Interior	Quesnel	340

OTHER PRIMARY PROCESSING MILLS

(Listed Alphabetically)

Mills listed in this section have log processing capability but do not produce any of the previously listed products.

OTHER MILLS - 2007

Mill Number	Company	Location of Mill	Product	Forest Region	Forest District
84	Louisiana Pacific Canada Ltd.	Golden	LVL	Southern Interior	Columbia
743	John Salo	Sointula	SSB	Coast	North Island - Central Coast
