

# Major Primary Timber Processing Facilities In British Columbia

2008



The Best Place on Earth

Ministry of Forests and Range  
Policy and Trade Relations Branch





# Major Primary Timber Processing Facilities In British Columbia

2008

Policy and Trade Relations Branch  
Ministry of Forests and Range  
Victoria, B.C.

June 2010

## Foreword

This is the 2008 edition of the Ministry of Forests and Range publication of *Major Primary Timber Processing Facilities in British Columbia* and refers to timber processing mills that have primary log processing capability and which operated during 2008. Coverage does not include re-manufacturing plants. Pulp and paper mills, panel plants and pellet mills are included in this report even though some do not have primary log processing capabilities. Where a mill produces more than one product (e.g. lumber and veneer; poles and posts), each operation is listed in the respective sections of the report.

The information was gathered through a survey of individual processing mills. If a mill did not submit a response, mill specific information reported in trade publications, directories and corporate annual reports may have been used. In some cases Ministry of Forests and Range staff provided estimates based on their knowledge of the operation and information reported in previous years.

This report is available free of charge on the Ministry of Forests and Range Internet site at:

<http://www.for.gov.bc.ca/het/>

The report is updated annually. Comments, errors or omissions may be sent to the following location:

Policy and Trade Relations Branch  
Ministry of Forests and Range  
P.O. Box 9515, Station Prov Gov,  
Victoria, B.C.  
V8W 9C2

Phone (250) 356-7900

FAX (250) 356-7903

E-mail: [Forests.InternationalRelationsUnit@gov.bc.ca](mailto:Forests.InternationalRelationsUnit@gov.bc.ca)

### **Acknowledgements**

The cooperation of mill personnel who responded to the Ministry of Forests and Range survey is gratefully acknowledged.

The important role played by Ministry of Forests and Range regional and district staff in securing mill responses is also gratefully acknowledged.

## Table of Contents

Map of Forest Region and District Boudaries – April 1, 2003 .....	4
Analysis .....	5
A. Introduction .....	5
B. Wood Fibre Supply and Use in British Columbia, 2008 .....	5
C. Time Series Data .....	9
1) Medium and Large Lumber Mills .....	9
2) Veneer Mills.....	14
3) Pulp and Paper Mills.....	18
4) Pellet Mills .....	22
Related References .....	23
Appendix: List of Mills .....	24
Chip Mills.....	24
Log Home Mills.....	26
Lumber Mills .....	29
Pellet Mills .....	35
Pole and Post Mills.....	37
Pulp and Paper Mills .....	40
Shake and Shingle Mills .....	42
Veneer, Plywood, OSB and Other Panel Mills .....	44
Other Primary Processing Mills .....	46

### Abbreviations for Products

UTI	- Utility Pole	PLY	- Plywood
PLE	- Other Pole	OSB	- Oriented Strand Board
PST	- Fence Post	PNL	- Other Panel
PLP	- Pulp	LVL	- Laminated Veneer Lumber
PPR	- Paper	SSB	- Shake and Shingle Block
VNR	- Veneer		

# Map of Forest Region and District Boundaries – April 1, 2003

- RSI - Southern Interior Forest Region (Kamloops)**  
 DMH - 100 Mile House Forest District (100 Mile House)  
 DAB - Arrow Boundary Forest District (Castlegar, Grand Forks, Nakusp)  
 DCS - Cascades Forest District (Merritt, Lillooet, Princeton)  
 DCC - Central Cariboo Forest District (Williams Lake, Horsefly, Likely)  
 DCH - Chilcotin Forest District (Alexis Creek)  
 DCO - Columbia Forest District (Revelstoke, Golden)  
 DHW - Headwaters Forest District (Clearwater, McBride)  
 DKA - Kamloops Forest District (Kamloops)  
 DKL - Kootenay Lake Forest District (Nelson)  
 DOS - Okanagan Shuswap Forest District (Vernon, Penticton, Salmon Arm)  
 DQU - Quesnel Forest District (Quesnel)  
 DRM - Rocky Mountain Forest District (Cranbrook, Invermere)

- RNI - Northern Interior Forest Region (Prince George)**  
 DFN - Fort Nelson Forest District (Fort Nelson)  
 DJA - Fort St. James Forest District (Fort St. James)  
 DKM - Kalum Forest District (Terrace)  
 DMK - Mackenzie Forest District (Mackenzie)  
 DND - Nadina Forest District (Burns Lake, Houston)  
 DPC - Peace Forest District (Dawson Creek, Fort St. John)  
 DPG - Prince George Forest District (Prince George)  
 DSS - Skeena Stikine Forest District (Smithers, Dease Lake, Hazelton)  
 DVA - Vanderhoof Forest District (Vanderhoof)

- RCO - Coast Forest Region (Nanaimo)**  
 DCR - Campbell River Forest District (Campbell River)  
 DCK - Chilliwack Forest District (Chilliwack)  
 DQC - Haida Gwaii Forest District (Queen Charlotte City)  
 DNC - North Coast Forest District (Prince Rupert)  
 DIC - North Island - Central Coast Forest District (Port McNeill, Hagensborg)  
 DSI - South Island Forest District (Port Alberni, Duncan)  
 DSQ - Squamish Forest District (Squamish)  
 DSC - Sunshine Coast Forest District (Powell River, Sechart)

\* Denotes BC Timber Sales Location



## Analysis

### A. Introduction

The Analysis section of the report presents summary statistics derived from the mill survey database and selected analysis of these statistics. First, 2008 fibre supply and use in the province is examined through a series of pie charts. This is followed by time series statistics for medium and large lumber and veneer mills, as well as pulp and paper mills.

### B. Wood Fibre Supply and Use in British Columbia, 2008

Figure 1 shows the estimated primary log use by mills in British Columbia was approximately 59.1 million cubic metres. This represents a decrease of 15.8 million cubic metres or 21% from the 2007 level. This is the largest single year drop in the last 20 years. Primary log use decreased by 8% on the Coast and 25% in the Interior.

The decline in log use can be mainly attributed to lumber mill curtailments. 25 lumber mills were closed or did not operate in 2008, as a result of the collapse of the US housing market. Logs used by lumber mills dropped from 56.6 million cubic metres in 2007 to 42.8 million cubic metres in 2008.

Curtailments in lumber mills resulted in a shortfall in residual chip supplies. As a result, pulp mills increased the use of whole log chips in 2008. Whole log chipping (i.e. chipping in pulp mill wood rooms and chip mills) accounted for over 10% of the log consumption in the province, up from 7% in 2007.

Lumber mills accounted for 73% of the total primary log use in 2008, followed by veneer and OSB mills at 10%.

Figure 2 estimates product recovery from lumber mills. It shows that 45% of the volume of wood entering lumber mills was converted to lumber, 2% lost through lumber shrinkage, and the remaining 53% converted to chips, sawdust and shavings.

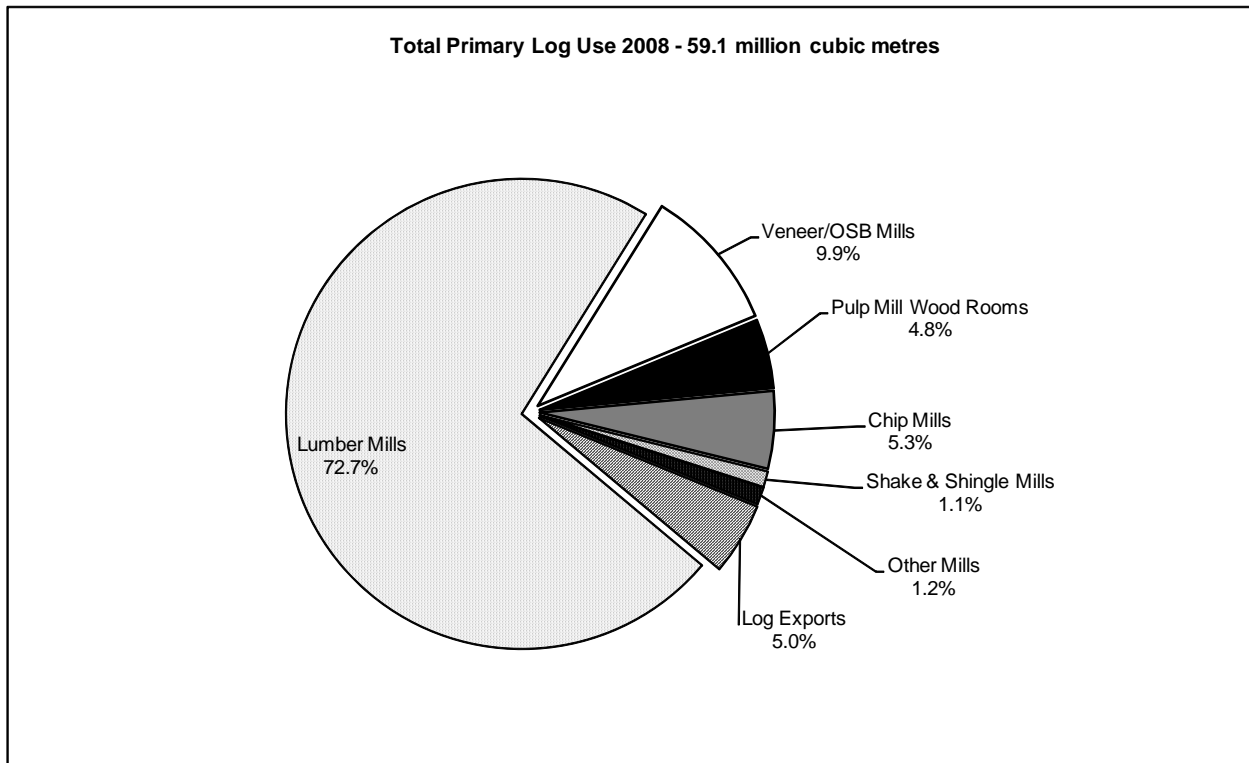
Figure 3 combines information from figures 1 and 2 with a chart showing fibre used by pulp mills and pellet mills. In 2008, 90% of the fibre used by pulp mills was in the form of chips and sawdust obtained from other mills, while 10% was from logs chipped in the pulp mill. Fibre use in pellet mills in 2008 is estimated to be 2.2 million cubic metres in solid wood equivalent, similar to the 2007 level.



**Figure 1: Estimated British Columbia Primary Log Use - 2008**

	Coast			Interior			Province		
	Number of Mills	Est. Volume Used (000 M <sup>3</sup> )	Per Cent	Number of Mills	Est. Volume Used (000 M <sup>3</sup> )	Per Cent	Number of Mills	Est. Volume Used (000 M <sup>3</sup> )	Per Cent
<b>Primary Log Use</b>									
Lumber Mills	59	7,347	46.4%	94	35,471	82.4%	153	42,818	72.7%
Veneer/OSB Mills	3	1,516	9.6%	14	4,313	10.0%	17	5,829	9.9%
Pulp Mill Wood Rooms	8	1,936	12.2%	11	872	2.0%	19	2,808	4.8%
Chip Mills	6	1,770	11.2%	6	1,365	3.2%	12	3,135	5.3%
Shake & Shingle Mills	27	634	4.0%	3	7	0.0%	30	640	1.1%
Other Mills	16	137	0.9%	61	573	1.3%	77	710	1.2%
Log Exports		2,479	15.7%		449	1.0%		2,928	5.0%
<b>TOTAL</b>	<b>119</b>	<b>15,819</b>	<b>100%</b>	<b>189</b>	<b>43,049</b>	<b>100%</b>	<b>308</b>	<b>58,868</b>	<b>100%</b>
<b>Log Available</b>									
Total Harvest*		15,447			45,672			61,119	
Log Imports								64	
<b>TOTAL</b>								<b>61,183</b>	
Difference								2,315	3.8%

\* Total harvest excludes waste and reject



Sources:

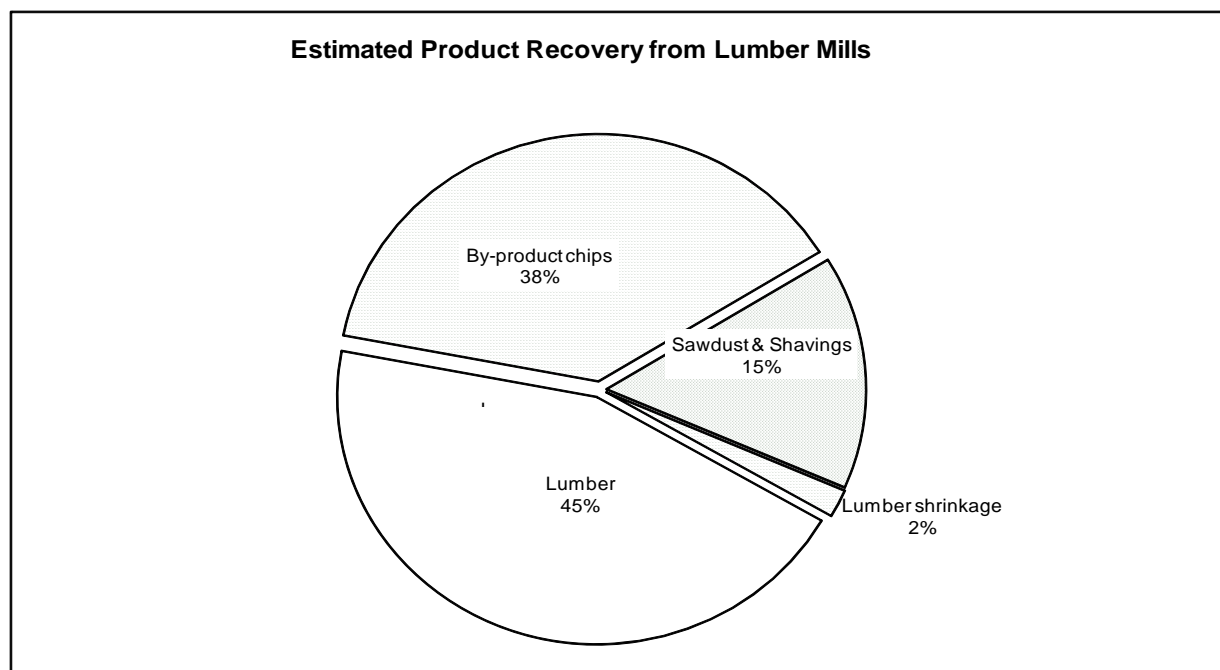
Survey data; Statistics Canada trade data; BC Ministry of Forests and Range log export statistics.

Notes:

1. Statistics above do not include mills that were closed or did not operate in 2008.
2. Other mills include fence post mills, utility pole mills, other pole mills and log home mills.

**Figure 2: Estimates of Product Recovery from Lumber Mills - 2008**

	Units	Coast	Interior	Province
<b>Number of Mills</b>		59	94	153
<b>Log Input</b>	('000 m <sup>3</sup> )	7,347	35,471	42,818
<b>Lumber Output</b>				
Lumber Output (nominal measure)	(mfbm)	1,670	9,727	11,398
Lumber Recovery Factor	(mfbm/m <sup>3</sup> )	0.227	0.274	0.266
Conversion Factor *	(m <sup>3</sup> /mfbm)	2.07	1.61	1.68
= Actual Volume of Lumber Produced	('000 m <sup>3</sup> )	3,458	15,661	19,119
As Per Cent of Log Input	(%)	47%	44%	45%
<b>Lumber Shrinkage</b>				
Shrinkage (5% of lumber production)	('000 m <sup>3</sup> )	-	783	783
As Per Cent of Log Input	(%)	0%	2%	2%
<b>By Product Chip Output (from Lumber Mills)</b>				
By Product Chip Output	(000 bdu)	990	4,925	5,915
By Product Chip Recovery Factor	(bdu/'000 m <sup>3</sup> )	135	139	138
Conversion Factor	(m <sup>3</sup> /bdu)	2.86	2.75	2.77
= Volume of Chips Produced	('000 m <sup>3</sup> )	2,831	13,544	16,376
As Per Cent of Log Input	(%)	39%	38%	38%
<b>Sawdust and Shavings - Estimated Volume</b>				
As Per Cent of Log Input	(%)	14%	15%	15%



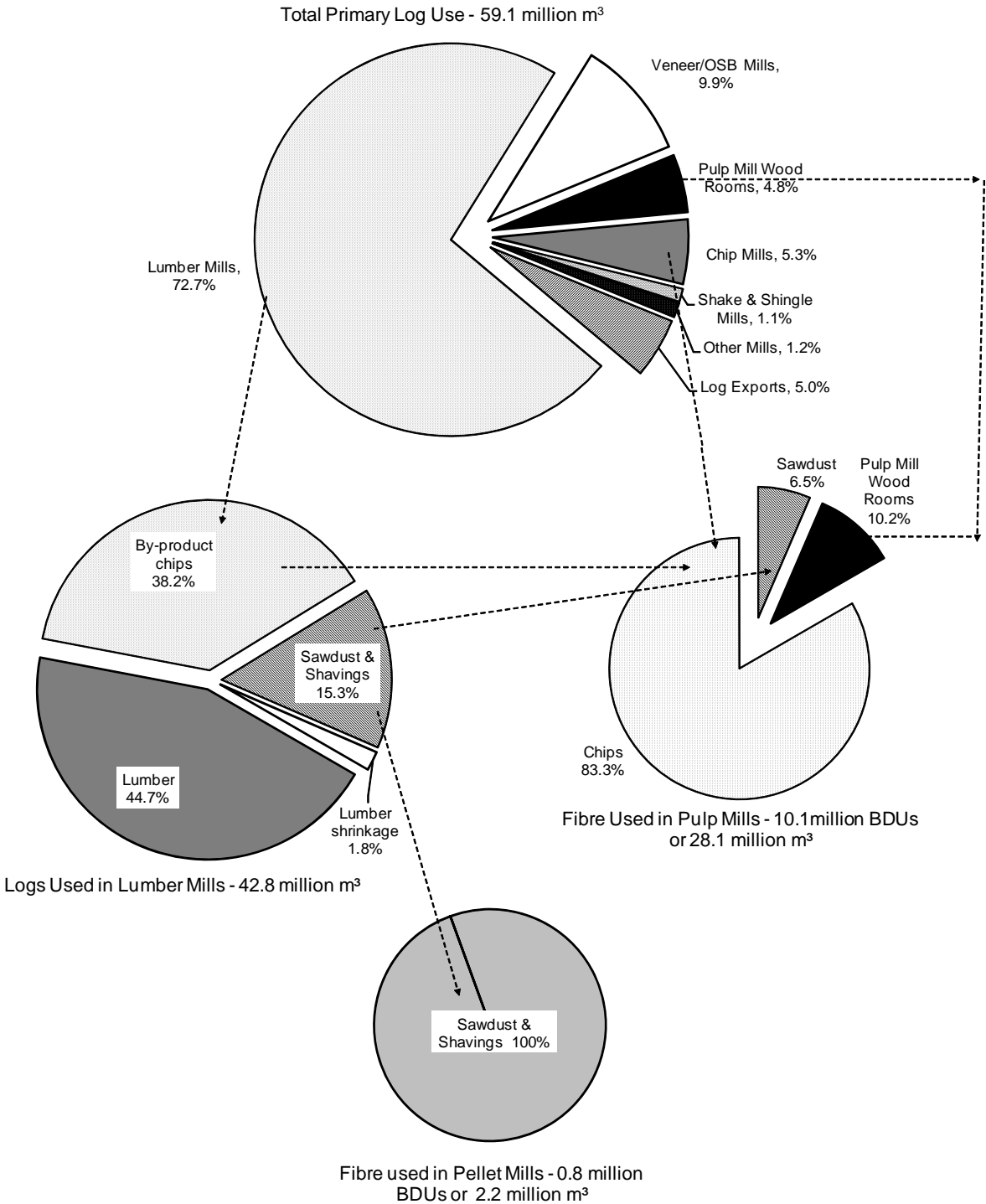
Notes:

\* Conversion factors are to convert lumber output or by-product chips in nominal measure to solid wood equivalent.

mfbm = thousand board feet; m<sup>3</sup> = cubic metres; bdu = bone dry unit = 2400 pounds.

Conversion factors used in the analysis are based on Forintek Canada Corp., "Conversion Factors for the Forest Products Industry in Western Canada", Special Publication No. SP-24R, 1985 and "Major Primary Timber Processing Facilities in British Columbia 2007", Appendix 1, page 24.

**Figure 3: Estimated British Columbia Log and Fibre Use - 2008**



## C. Time Series Data

### 1) Medium and Large Lumber Mills

There were 83 lumber mills with capacity over 40 million board feet per year operating in BC in 2008, accounting for about 97% of lumber production<sup>1</sup>. Figure 4 shows the distribution of lumber mills by mill size, for the Coast and Interior.

**Figure 4: Distribution Of British Columbia Lumber Mills By Size - 2008**

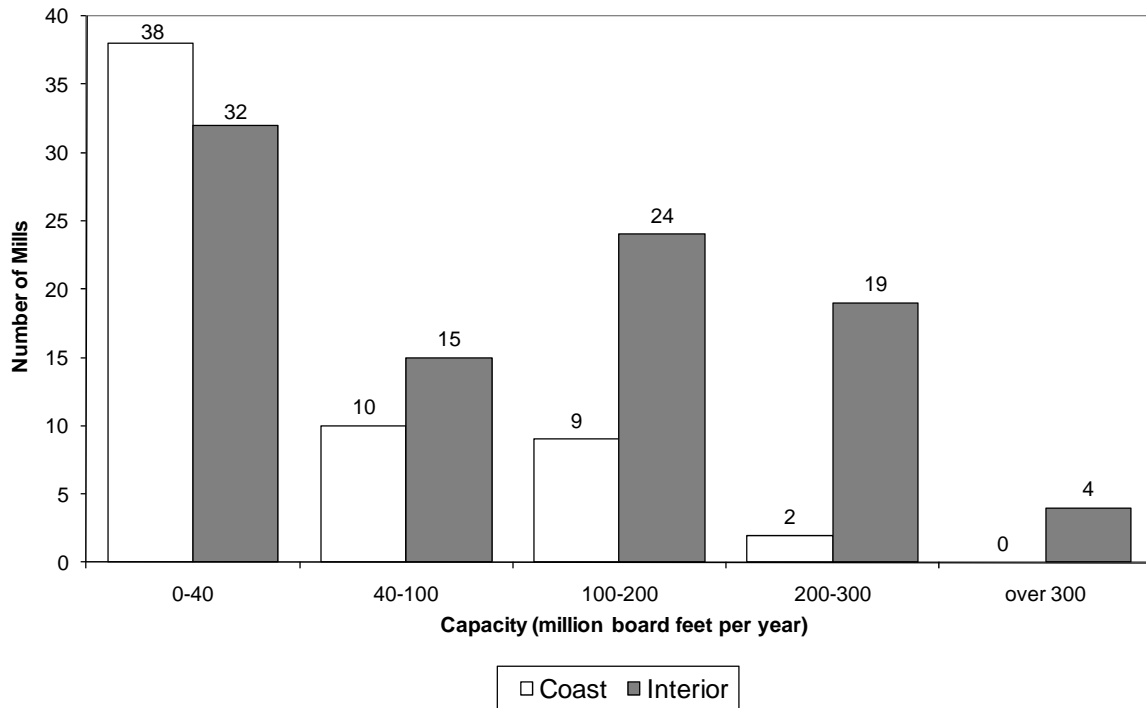


Table 1 shows detailed statistics for medium and large sized sawmills in BC from 1990 to 2008<sup>2</sup>. The data covers 21 mills on the Coast and 62 in the Interior in 2008.

The number of lumber mills has been falling steadily since 1990, while the average capacity has been trending upwards for the same period of time. Average capacity is higher in the Interior than on the Coast. The gap has widened since 2001, with the average capacity growing at a faster pace in the Interior.

<sup>1</sup> This publication also reports estimated annual capacity for a large number of small mills: 70 mills with capacity less than 40 million board feet in 2008, of which 40% had capacity of less than 5 million board feet per year.

<sup>2</sup> The time series data was developed from historical databases from the Ministry of Forests and Range annual mill survey and only covers those mills with annual capacity of 40 million board feet or more.

Figure 7 shows that capacity utilization has dropped significantly since 2007 in both the Interior and Coastal regions. This reflects widespread curtailments among lumber mills in the province since 2007 as a result of the economic downturn.

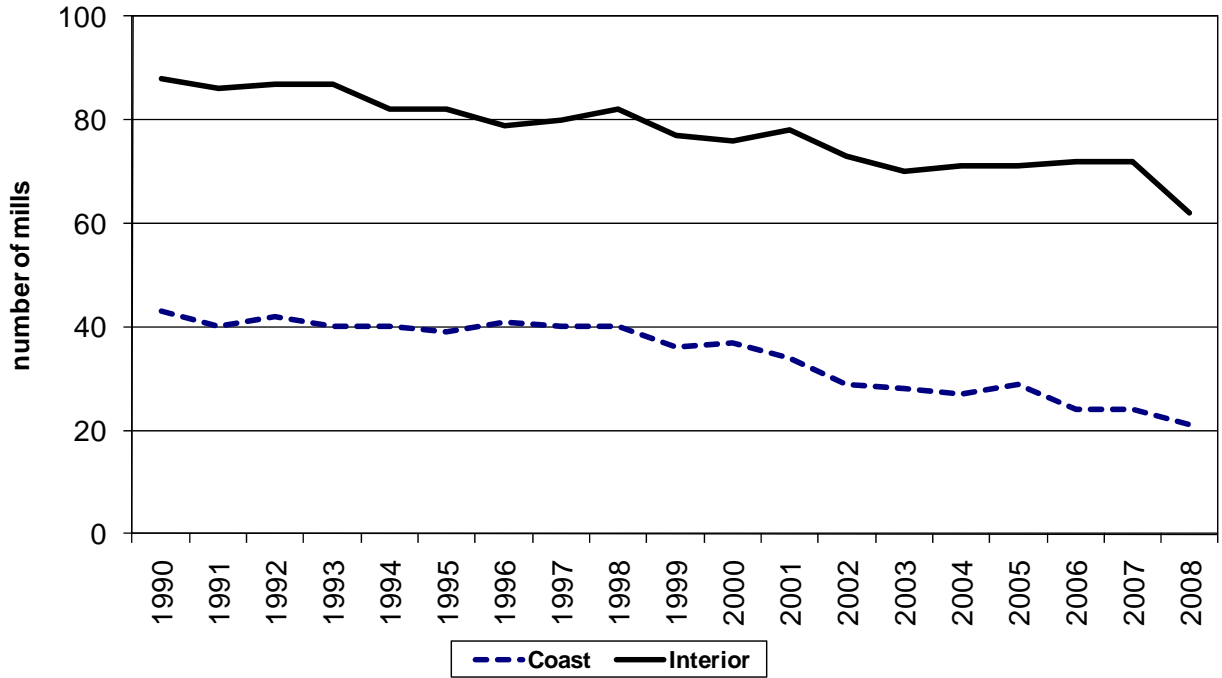
From Figure 8, the lumber recovery factors (LRF) in both the Interior and Coastal regions have been rising, with the Interior rising at a higher rate. This trend, however, has flattened out in the Interior since 2004 and showed a slight decrease in 2008. The decline in Interior LRF is not surprising as mills began to saw a higher proportion of lower quality beetle killed timber. The LRF for the Coast is lower than in the Interior partly because of species differences and the more diverse range of lumber products manufactured on the Coast as compared to the Interior.

**Table 1: British Columbia Lumber Mill Summary Statistics for Medium and Large Sized Mills**

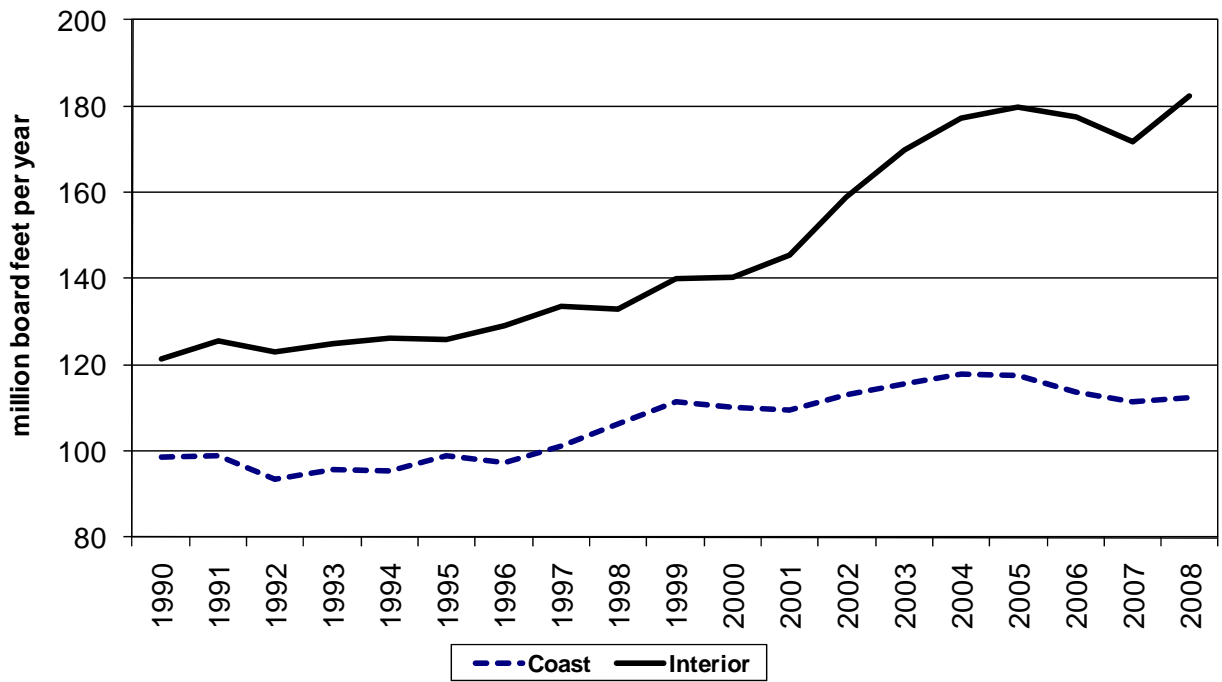
		1990...	1995...	2000	2001	2002	2003	2004	2005	2006	2007	2008	% change 1990- 2008
<b>COAST</b>													
Number of Mills		43	38	36	34	29	28	27	29	24	24	21	-51%
Total Capacity	billion board feet per year	4.2	3.8	4.0	3.7	3.3	3.2	3.2	3.4	2.7	2.7	2.4	-44%
Total Output	billion board feet per year	3.8	3.3	3.1	2.5	2.4	2.3	2.6	2.6	2.4	1.7	1.5	-60%
Total Input	million cubic metres per year	17.1	15.0	13.8	11.3	10.7	10.1	11.3	11.2	10.3	7.6	6.5	-62%
Average Capacity	million board feet per mill per year	99	100	111	109	113	116	118	117	114	111	112	14%
Capacity Utilization	output divided by capacity	89%	88%	77%	67%	74%	72%	81%	76%	89%	65%	64%	-28%
Lumber Recovery Factor	'000 board feet per cubic metre	0.220	0.223	0.222	0.222	0.228	0.233	0.229	0.231	0.236	0.230	0.232	5%
<b>INTERIOR</b>													
Number of Mills		88	83	77	78	73	70	71	71	72	72	62	-30%
Total Capacity	billion board feet per year	10.7	10.4	10.8	11.3	11.6	11.9	12.6	12.9	12.8	12.4	11.3	6%
Total Output	billion board feet per year	10.0	10.0	10.5	10.3	11.8	11.9	13.4	14.3	14.2	13.3	9.6	-4%
Total Input	million cubic metres per year	42.2	40.9	40.0	38.1	43.4	43.1	47.6	50.7	50.5	47.4	34.8	-17%
Average Capacity	million board feet per mill per year	121	125	140	145	159	170	177	181	177	172	182	51%
Capacity Utilization	output divided by capacity	93%	96%	98%	90%	102%	100%	107%	111%	111%	107%	85%	-9%
Lumber Recovery Factor	'000 board feet per cubic metre	0.236	0.245	0.263	0.269	0.273	0.275	0.281	0.282	0.281	0.280	0.275	16%
<b>PROVINCE</b>													
Number of Mills		131	121	113	112	102	98	98	100	96	96	83	-37%
Total Capacity	billion board feet per year	14.9	14.2	14.7	15.1	14.9	15.1	15.8	16.3	15.5	15.1	13.7	-8%
Total Output	billion board feet per year	13.7	13.3	13.6	12.8	14.3	14.2	16.0	16.9	16.6	15.0	11.1	-19%
Total Input	million cubic metres per year	59.2	55.8	53.8	49.4	54.0	53.1	58.9	61.9	60.8	55.0	41.3	-30%
Average Capacity	million board feet per mill per year	114	117	130	134	146	154	161	163	162	157	165	45%
Capacity Utilization	output divided by capacity	92%	94%	92%	85%	96%	94%	101%	104%	107%	100%	81%	-12%
Lumber Recovery Factor	'000 board feet per cubic metre	0.232	0.239	0.253	0.258	0.264	0.267	0.271	0.272	0.273	0.273	0.269	16%

Medium and Large Sized Mills defined as lumber mills with estimated capacity over 40 million board feet per year.  
Capacity estimated assuming two 8-hour shifts, 240 days per year.

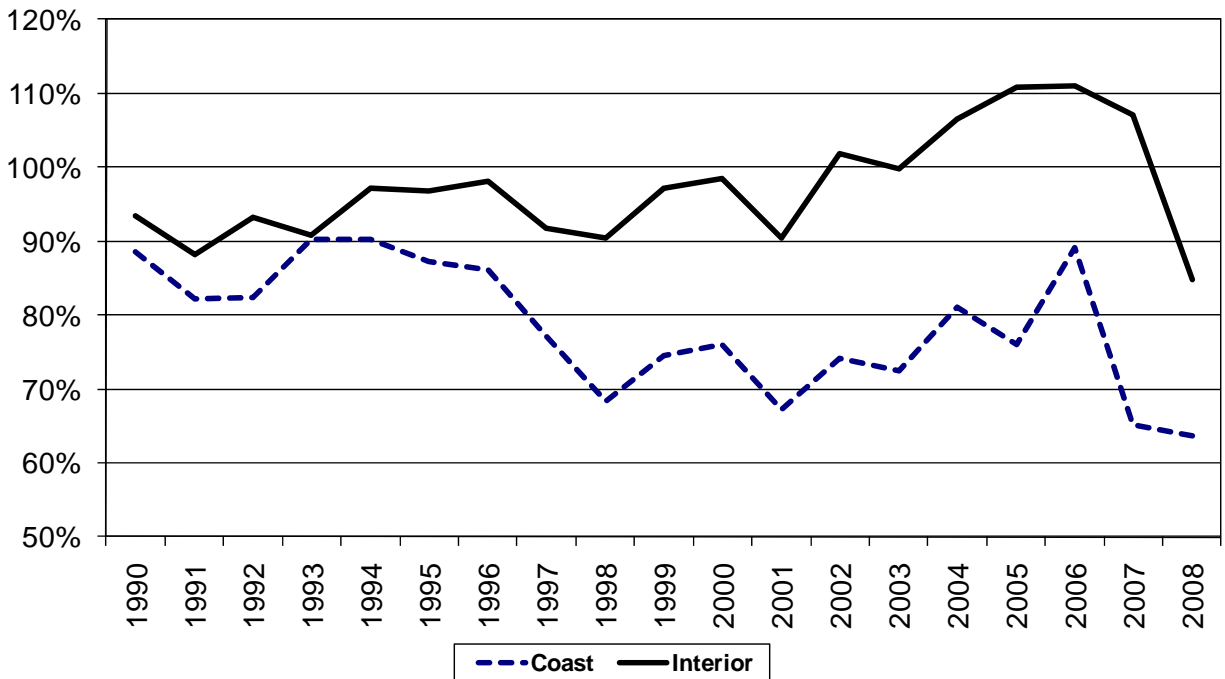
**Figure 5: BC Medium and Large Sized Lumber Mills  
Number of Mills**



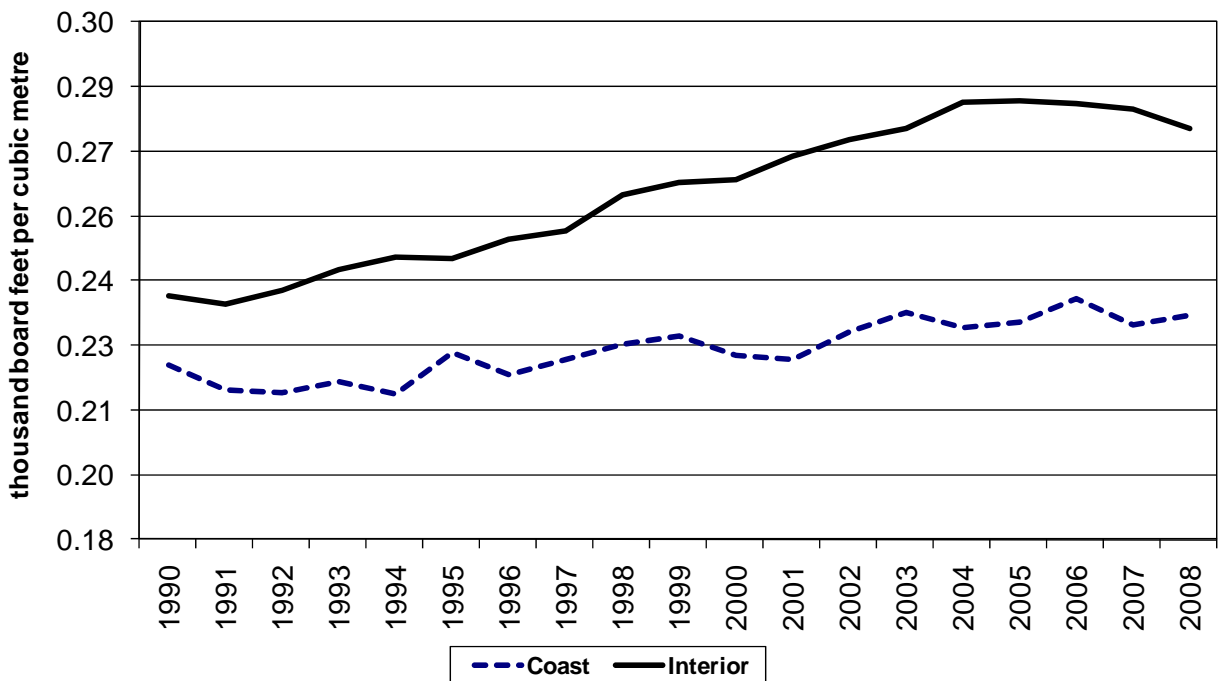
**Figure 6: BC Medium and Large Sized Lumber Mills  
Average Capacity**



**Figure 7: BC Medium and Large Sized Lumber Mills Capacity Utilization**



**Figure 8: BC Medium and Large Sized Lumber Mills Lumber Recovery Factor**





## 2) Veneer Mills

Veneer is used as an input to plywood manufacturing as well as an input to other engineered wood products such as laminated veneer lumber. Ten veneer mills in British Columbia have a plywood mill on the same site, whereas 3 mills produce “market veneer” for sale to plywood and other types of mills.

Table 2 gives a provincial overview of veneer mill statistics for 1990-2008. These statistics show 13 veneer mills operating in British Columbia in 2008, 3 on the Coast and 10 in the Interior. Total veneer capacity grew between 2000 and 2006, but declined in 2007 and 2008 as a result of production curtailments and mill closures.

Figure 9 shows total output and log input in veneer mills have dropped since 2006. Figure 10 shows that the average capacity of veneer mills grew steadily since 1990. Figure 11 shows a steady upward trend for capacity utilization in veneer mills since 1991 as mills shifted from 2 to 3 shifts per day. The trend was reversed in recent years, as veneer mills curtailed production due to the poor U.S. housing market. Figure 12 shows that BC veneer mill’s recovery factor grew over the 1990s, but has remained steady since 2000 at about 580 square feet per cubic metre of log input.

**Table 2: British Columbia Veneer Mill Summary Statistics**

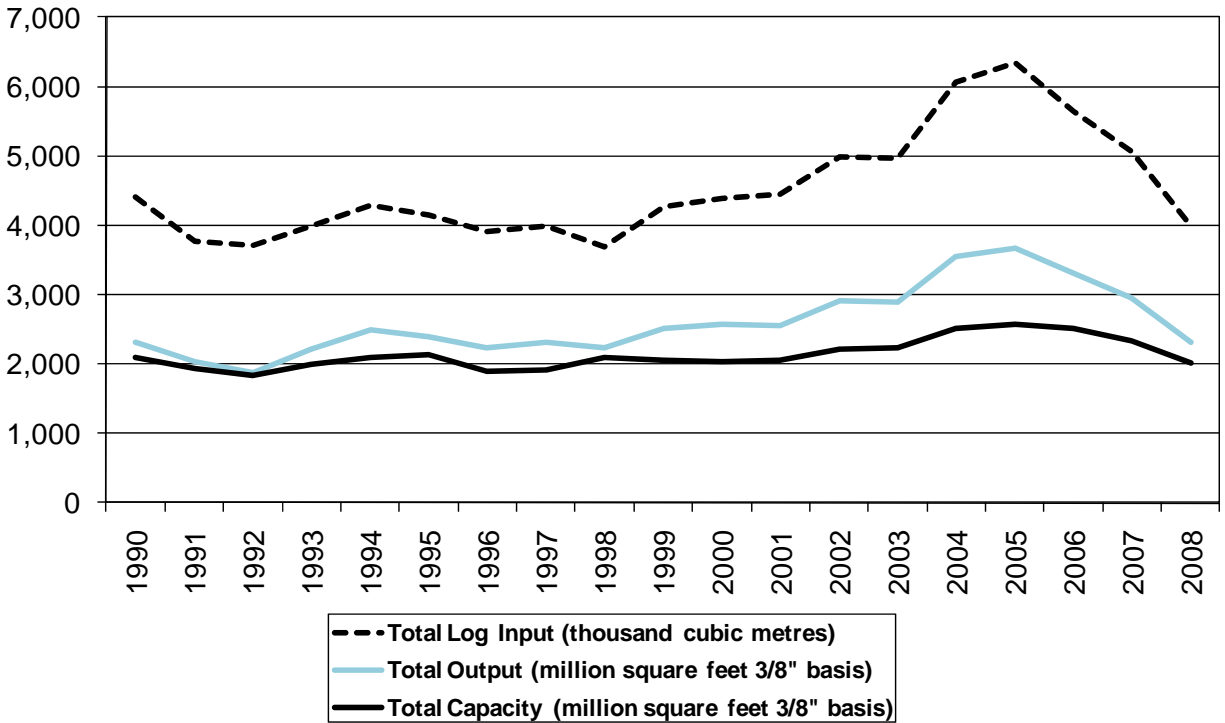
	1990...	1995...	2000	2001	2002	2003	2004	2005	2006	2007	2008	% change 1990- 2008
Number of Mills	20	17	16	16	16	16	17	17	16	15	13	-35%
Total Capacity (million square feet 3/8" basis)	2,102	2,131	2,030	2,055	2,212	2,228	2,520	2,580	2,505	2,325	2,006	-5%
Total Output (million square feet 3/8" basis)	2,306	2,388	2,567	2,558	2,911	2,901	3,552	3,667	3,314	2,946	2,320	1%
Total Log Input (thousand cubic metres)	4,398	4,143	4,390	4,446	4,989	4,976	6,057	6,348	5,650	5,069	3,996	-9%
Average Capacity (million square feet per mill)	105	125	127	128	138	139	148	152	157	155	154	47%
Average Log Input (thousand cubic metres per mill)	220	244	274	292	312	311	360	375	353	338	307	40%
Capacity Utilization (output divided by capacity)	110%	112%	126%	128%	132%	130%	140%	141%	132%	127%	116%	5%
Recovery Factor (square feet per cubic metre log input)	524	576	585	575	584	583	586	578	586	581	580	11%

Source: Major Primary Timber Processing Facilities in British Columbia, internal database, various years

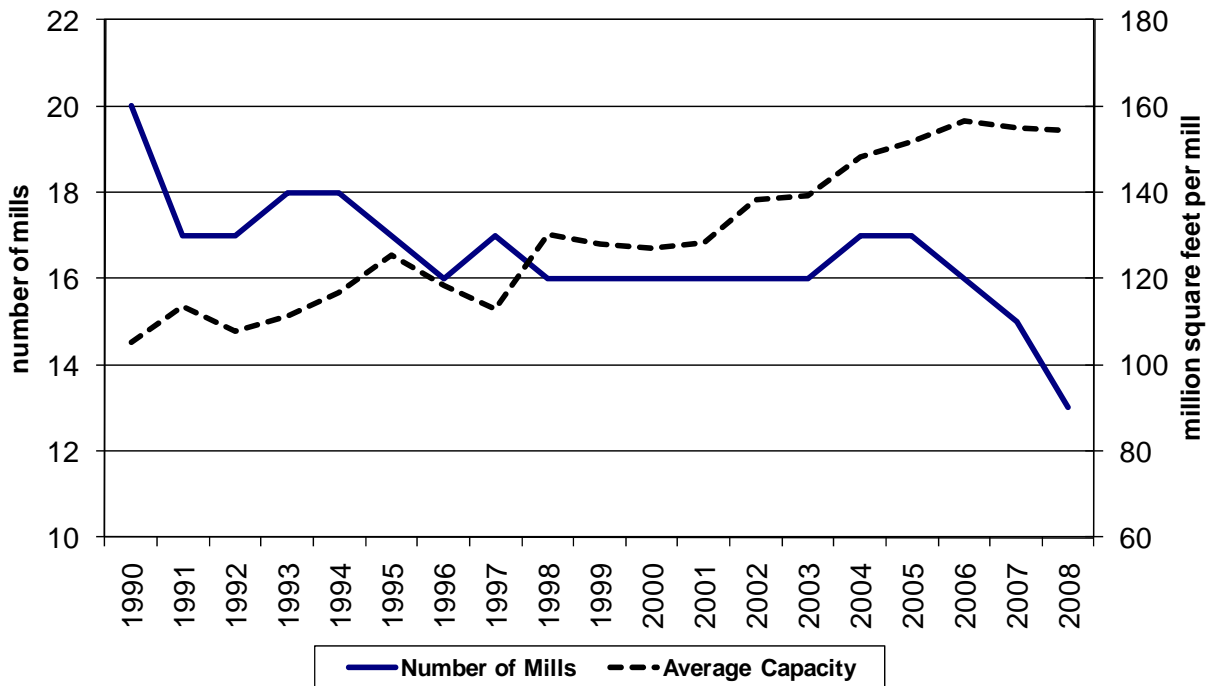
Output Capacity is estimated based on two 8 hour shifts, 240 days per year

Very small mills using an average of less than 25,000 cubic metres of logs per year are not included in these statistics

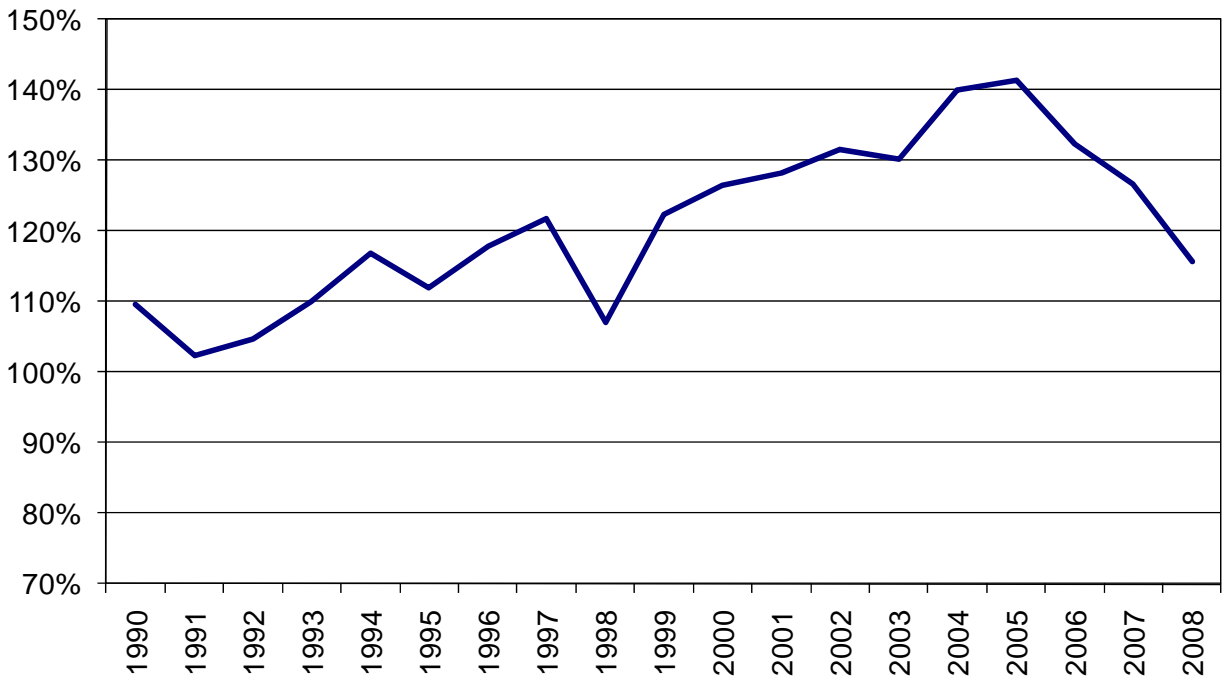
**Figure 9: BC Veneer Mills  
Capacity, Output and Log Input**



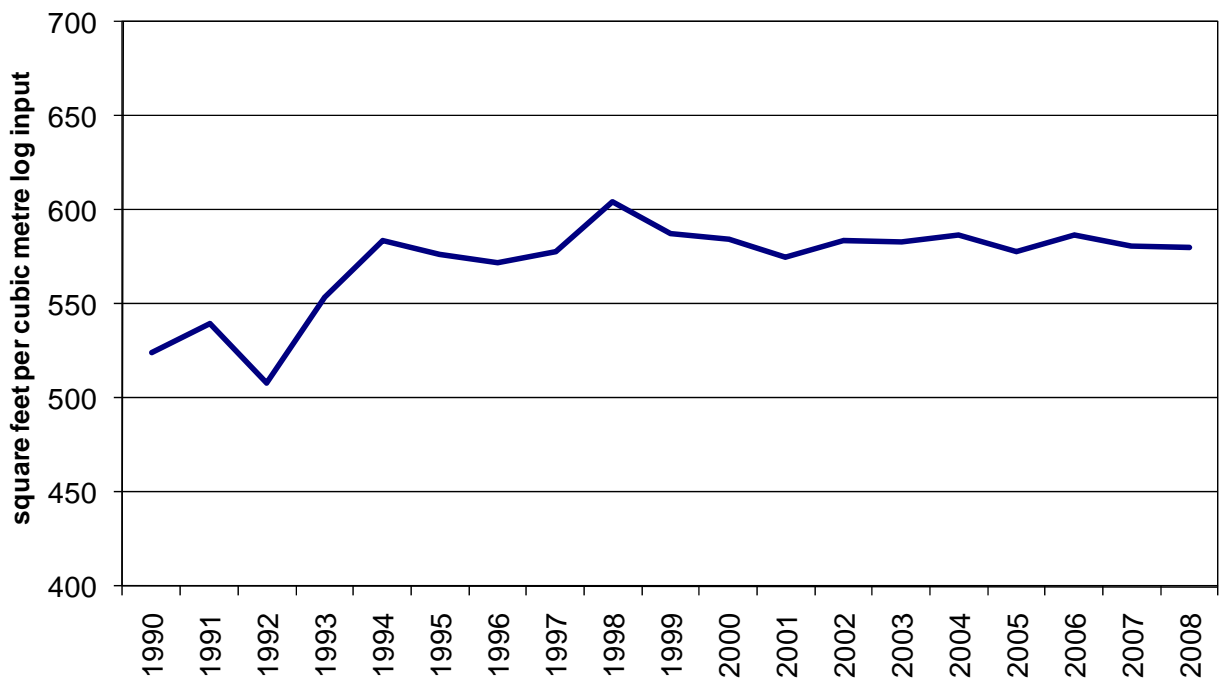
**Figure 10: BC Veneer Mills  
Number of Mills and Average Capacity**



**Figure 11: BC Veneer Mills  
Capacity Utilization**



**Figure 12: BC Veneer Mills  
Recovery Factor**



### 3) Pulp and Paper Mills

Pulp is used primarily as a raw material for paper and paperboard products as well as packaging. There were 19 pulp mills and 9 paper mills in BC in 2008. Of the 19 pulp mills, 8 were integrated, meaning that both the pulp mill and paper mill are located in the same site. The main pulp products are bleached softwood kraft pulp and chemi-thermomechanical pulp (CTMP) whereas most of the paper produced in BC is newsprint.

Table 3 presents an overview of pulp and paper mills in the province for 1991-2008. Total capacity and output of pulp mills in BC have declined since 1991, and the drop has accelerated in recent years. A similar trend was seen in paper mill capacity and output. Paper mill capacity fell by 18% between 1991 and 2008, with total paper mill output falling by 12% over this period.

An upward trend that was seen in pulp mill capacity utilization has flattened out in recent years, dropping slightly in 2008.

Figure 15 shows that total capacity and total output for paper mills decreased in 2008, compared with 2007 levels. As shown in Figure 16, paper mill capacity utilization has dropped since 2005 as total output has fallen at a faster rate than total capacity during this time period.

**Table 3: British Columbia Pulp and Paper Mill Summary Statistics**

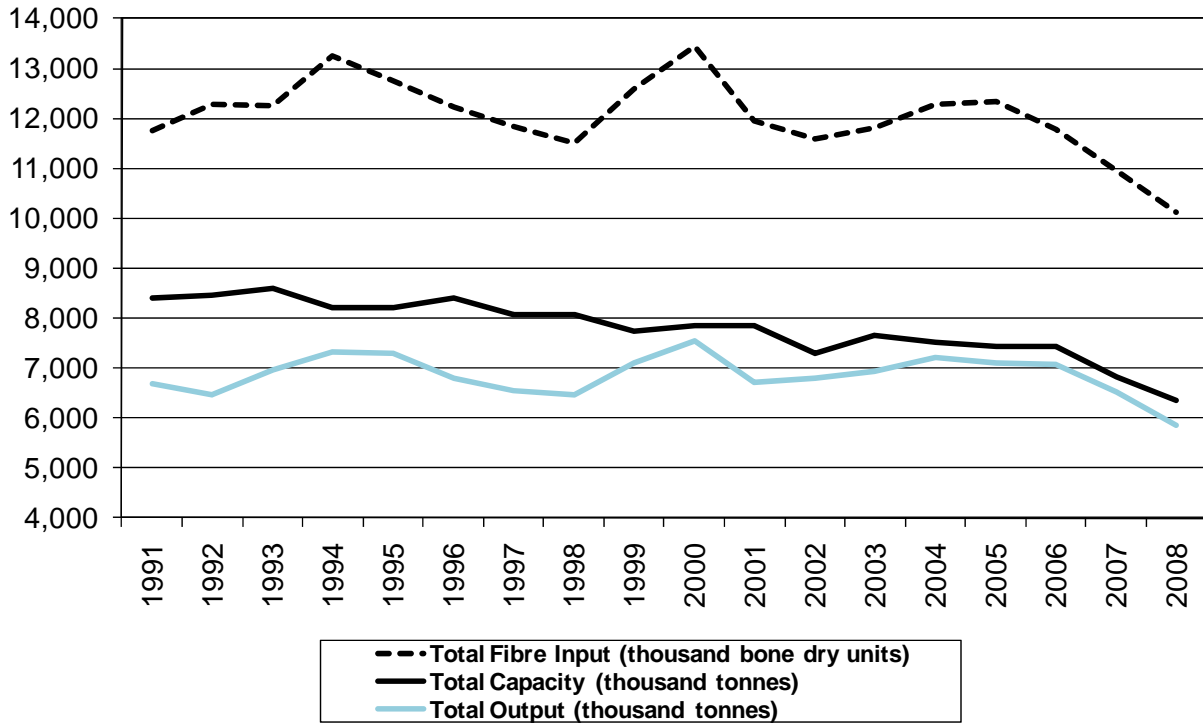
		1991...	1995...	2000	2001	2002	2003	2004	2005	2006	2007	2008	% change 1991-2008
Number of Pulp Mills		24	24	23	23	21	21	22	22	21	21	19	-21%
Total Capacity	(thousand tonnes)	8,416	8,210	7,839	7,842	7,303	7,647	7,527	7,445	7,421	6,836	6,356	-24%
Total Output	(thousand tonnes)	6,683	7,295	7,558	6,728	6,788	6,939	7,221	7,092	7,082	6,513	5,852	-12%
Total Fibre Input	(thousand bone dry units)	11,761	12,748	13,438	11,959	11,577	11,825	12,282	12,344	11,792	10,965	10,117	-14%
Average Capacity	(thousand tonnes)	351	342	341	341	348	364	342	338	353	326	335	1%
Average Fibre Input	(thousand bone dry units)	490	531	584	520	551	563	558	561	562	522	532	15%
Capacity Utilization		79%	89%	96%	86%	93%	91%	96%	95%	95%	95%	92%	20%
Number of Paper Mills		12	11	11	11	11	11	11	11	11	9	9	-25%
Total Capacity	(thousand tonnes)	3,472	3,062	3,271	3,135	3,081	3,237	3,218	2,979	3,188	2,864	2,838	-18%
Total Output	(thousand tonnes)	2,739	2,747	3,175	2,949	2,936	2,925	3,139	3,021	3,045	2,552	2,419	-12%
Average Capacity	(thousand tonnes)	289	278	297	285	280	294	293	271	290	318	315	9%
Capacity Utilization		79%	90%	97%	94%	95%	90%	98%	101%	95%	89%	85%	8%

Source: Major Primary Timber Processing Facilities in British Columbia, internal database, various years

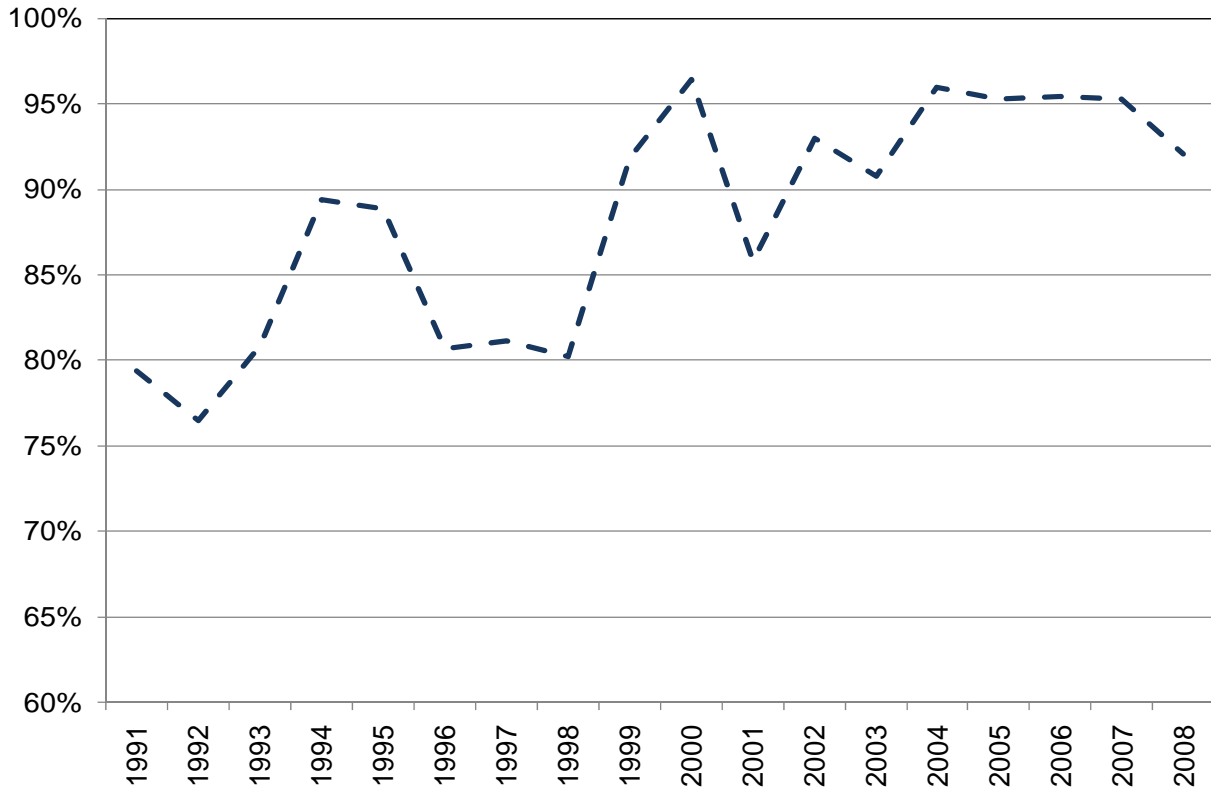
Estimated annual capacity is based on a standardized operation of 345 operating days per year, 1 24-hour shift per day. Actual operations may vary from this schedule.

Pulp mills included in these statistics are those that use wood fibre input. A deinking pulp mill which uses other input, such as waste paper, is not included in the table.

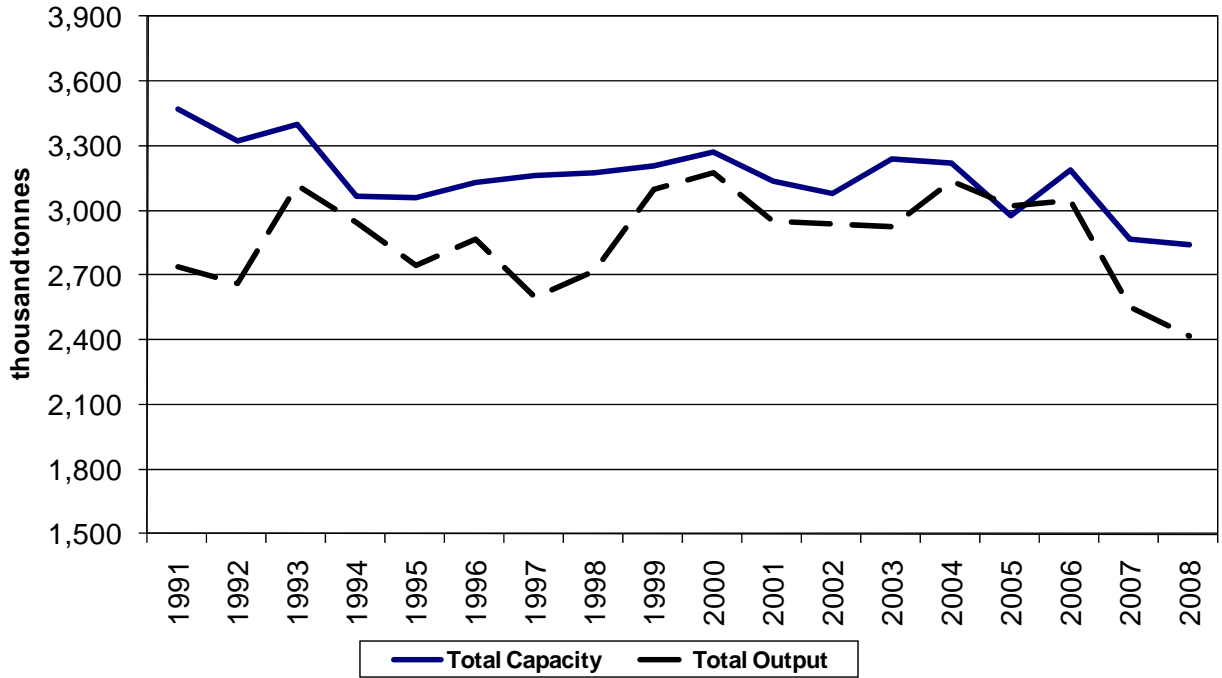
**Figure 13: BC Pulp Mills  
Capacity, Output and Input**



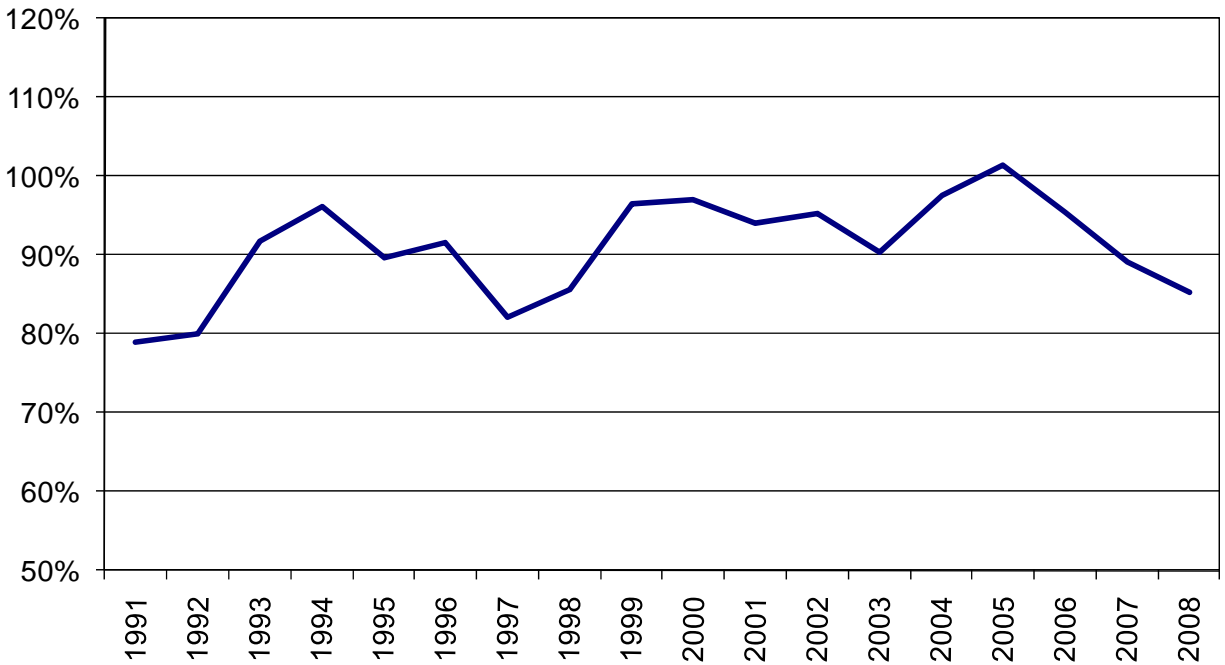
**Figure 14: BC Pulp Mills Capacity Utilization**



**Figure 15: BC Paper Mills  
Capacity and Output**



**Figure 16: BC Paper Mills  
Capacity Utilization**





#### **4) Pellet Mills**

Wood pellets are primarily used as wood fuel and are usually made from compacted sawdust. Pellets are produced from the byproducts of sawmilling and other wood transformation activities. Much of the pellet production from British Columbia is shipped to European countries.

This report shows 8 pellet mills operated in BC in 2008. It is estimated that the total capacity for these mills was 935,000 tonnes of pellets per year based on an operating schedule of three 8-hour shifts per day, 345 days per year. On average, mills ran at about 84% of capacity, producing about 787,000 tonnes of pellets in total in 2008. The fibre used to produce this volume of pellets was about 880,000 metric tonnes, largely in the form of sawdust, which is equivalent to 2.2 million cubic metres on a solid wood basis.

The eight pellet mills in the province are an important part of the BC Energy Plan and supply wood pellets to BC bio-energy plants. While other fuel sources exist for bio-energy plants, pellets remain attractive for shipping owing to their high density and low moisture content. The worldwide bio-energy sector is heating up and increasingly looking to pellet mills to meet their fuel demands.

## Related References

Industry Canada, Canadian Industry Statistics, [www.ic.gc.ca/eic/site/cis-sic.nsf/eng/home](http://www.ic.gc.ca/eic/site/cis-sic.nsf/eng/home)

Natural Resources Canada, "The Atlas of Canada", available on the Internet at: <http://atlas.gc.ca/site/english/maps/environment/forest/useforest/sawmills>

Pulp and Paper Product Council, [www.pppc.org](http://www.pppc.org)

Resource Information Systems Inc. (RISI), [www.risiinfo.com](http://www.risiinfo.com)

Spelter, Henry, David McKeever, and Daniel Toth, "Profile 2009: Softwood Sawmills in the United States and Canada", 2009, Research Paper FPL-RP-659. Madison, WI: U.S. Department of Agriculture, Forest Service, Forest Products Laboratory, [www.treesearch.fs.fed.us/pubs/34525](http://www.treesearch.fs.fed.us/pubs/34525)

Random Lengths, Daily WoodWire, [www.rlpi.com/base.asp?s1=Daily\\_WoodWire](http://www.rlpi.com/base.asp?s1=Daily_WoodWire)

Wood Pellet Association of Canada, [www.pellet.org](http://www.pellet.org)

## **Appendix: List of Mills**

### **Chip Mills**

(Listed Alphabetically)

Only mills that produce wood chips as a primary product are listed in this section.

#### Notes:

1. Measurement units are in thousands of bone dry units (000 BDUs).
2. Estimated annual capacity is based on a standardized operation of 240 days per year, two 8 hour shifts per day. Actual operations may vary from this schedule.

**CHIP MILLS - 2008**

Mill Number	Company	Location of Mill	Forest Region	Forest District	Estimated Annual Capacity (000s of BDUs)
446	Campbell River Fibre Ltd.	Campbell River	Coast	Campbell River	110
924	Chips Ahoy Fibre Supply	Mission	Coast	Chilliwack	110
345	DCT Chambers Trucking Ltd.	Chemainus	Coast	South Island	250
356	East Fraser Fibre Co Ltd.	Mackenzie	Northern Interior	Mackenzie	240
409	Howe Sound Pulp & Paper Ltd.	Vancouver	Coast	Chilliwack	264
937	Pacific Fibre	Port Mellon	Coast	Sunshine Coast	168
952	River City Fibre	Kamloops	Southern Interior	Kamloops	168
18	Terminal Forest Products Ltd.	Langdale Dryland Sort	Coast	Sunshine Coast	91
107	Tolko Industries Ltd.	Williams Lake	Southern Interior	Central Cariboo	58
394	Tolko Industries Ltd.	Heffley Creek	Southern Interior	Kamloops	82
68	Tolko Industries Ltd.	Armstrong	Southern Interior	Okanagan Shuswap	96
183	West Fraser Mills Ltd.	Terrace	Northern Interior	Kalum	480

## **Log Home Mills**

(Listed Alphabetically)

Mills that process logs to manufacture log homes are listed in this section.

A throughput capacity measurement is not as meaningful for log home mills as it is for other types of primary timber processing mills. Therefore, this section does not include estimated annual capacity.

**LOG HOME MILLS - 2008**

Mill Number	Company	Location of Mill	Forest Region	Forest District
969	All Canadian Log Works Ltd.	Campbell River	Coast	Campbell River
190	Artisan Custom Log Construction Ltd.	Maple Ridge	Coast	Chilliwack
946	BearPaw Mountain Homes Ltd.	Prince George	Northern Interior	Prince George
38	Big Foot Manufacturing Inc.	Tappen	Southern Interior	Okanagan Shuswap
39	Big Rock Homes	Clearbrook	Coast	Chilliwack
458	Brian Moore Log Homes Ltd.	Abbotsford	Coast	Chilliwack
697	Caliga Log Homes Ltd.	93 Mile	Southern Interior	100 Mile House
694	Canada's Log People Ltd.	100 Mile House	Southern Interior	100 Mile House
260	Canadian Walden Log Homes Ltd.	Sardis	Coast	Chilliwack
522	Chinook Log Homes Ltd.	Bear Flats, Montney	Northern Interior	Peace
212	Custom Log Homes Ltd.	Salmon Arm	Southern Interior	Okanagan Shuswap
275	Granberg Construction Ltd.	Kamloops	Southern Interior	Kamloops
46	Hamill Creek Timberwrights	Meadow Creek	Southern Interior	Kootenay Lake
216	Ideal Export Log Homes Ltd.	Salmon Arm	Southern Interior	Okanagan Shuswap
218	Maurer Construction Ltd.	Penticton	Southern Interior	Okanagan Shuswap
967	Mile High Log Homes	Campbell River	Coast	Campbell River
391	Morgan Log Homes Ltd.	Hope	Coast	Chilliwack
49	Neville Log Homes Corporation	Kamloops	Southern Interior	Kamloops
230	Nicola Log Works Ltd.	Merritt	Southern Interior	Cascades
291	North American Log Crafters Ltd.	Celista	Southern Interior	Okanagan Shuswap
52	Original Log Homes Ltd.	100 Mile House	Southern Interior	100 Mile House
692	Pacific Log Homes Ltd.	Lone Butte	Southern Interior	100 Mile House

**LOG HOME MILLS - 2008**

Mill Number	Company	Location of Mill	Forest Region	Forest District
225	Peco Log Homes	Okanagan Falls	Southern Interior	Okanagan Shuswap
474	Pioneer Log Homes Ltd.	Williams Lake	Southern Interior	Central Cariboo
971	Predator Log Homes	100 Mile House	Southern Interior	100 Mile House
223	Radomske Log Homes Ltd	Kelowna	Southern Interior	Okanagan Shuswap
473	Reko Log Homes Ltd.	Quesnel	Southern Interior	Quesnel
954	Rocky Mountain Log Homes Canada Inc	LeJac	Northern Interior	Vanderhoof
57	Roundwood Log Homes Ltd.	Prince George	Northern Interior	Prince George
693	Sitka Log Homes Ltd.	100 Mile House	Southern Interior	100 Mile House
509	Ski Lumber Ltd.	Valemount	Southern Interior	Headwaters
58	Sperlich Log Construction Inc	Enderby	Southern Interior	Okanagan Shuswap
423	Surelog Homes Ltd.	Tappen	Southern Interior	Okanagan Shuswap
602	T.L. Timber Ltd.	Cawston	Southern Interior	Okanagan Shuswap
59	Tall Timber Log Builders	Abbotsford	Coast	Chilliwack
60	Top Notch Log Construction	Victoria	Coast	South Island
245	Traditional Log Homes Ltd.	Salmon Arm	Southern Interior	Okanagan Shuswap
963	Truelog Manufacturing Ltd	Kamloops	Southern Interior	Kamloops
961	Vision Logworks Ltd	Cache Creek	Southern Interior	Kamloops
63	West Coast Log Homes	Gibsons	Coast	Sunshine Coast
267	Whitevalley Log Homes Ltd.	Cherryville	Southern Interior	Okanagan Shuswap
698	Wildwood Forest Products Ltd.	Williams Lake	Southern Interior	Central Cariboo

## **Lumber Mills**

(Listed Alphabetically)

Mills producing lumber are reported in the following 2 sections:

- a) Mills that have estimated annual capacity of more than 10 million board feet of lumber.
- b) Mills that have estimated annual capacity of less than 10 million board feet of lumber.

Notes:

- 1. Measurement units are in millions of board feet.
- 2. Estimated annual capacity is based on a standardized operation of 240 days per year, two 8 hour shifts per day. Actual mill operations may vary from this schedule.



**THE FOLLOWING MILLS HAD CAPACITY OF MORE THAN 10 MILLION BOARD FEET OF LUMBER IN 2008**

Mill Number	Company	Location of Mill	Forest Region	Forest District	Estimated Annual Capacity (millions of board feet)
9	A.J. Forest Products Ltd.	Brackendale	Coast	Squamish	17
5	Abfam Enterprises Ltd.	Port Clements	Coast	Queen Charlotte	24
128	Abitibi-Consolidated Company of Canada	Mackenzie	Northern Interior	Mackenzie	194
129	Abitibi-Consolidated Company of Canada	Mackenzie	Northern Interior	Mackenzie	119
8	Andersen Pacific Forest Products Ltd	Ruskin	Coast	Chilliwack	24
137	Apollo Forest Products Ltd.	Fort St James	Northern Interior	Fort St James	168
207	Ardew Wood Products Ltd.	Merritt	Southern Interior	Cascades	65
498	Aspen Planers Ltd.	Merritt	Southern Interior	Cascades	192
213	Babine Forest Products Limited	Burns Lake	Northern Interior	Nadina	320
10	BC Custom Timber Products Ltd.	Vanderhoof	Northern Interior	Vanderhoof	14
252	C & C Wood Products Ltd.	Quesnel	Southern Interior	Quesnel	28
64	Canadian Forest Products Ltd.	Vavenby	Southern Interior	Headwaters	77
90	Canadian Forest Products Ltd.	Radium Hot Sprgs	Southern Interior	Rocky Mountain	177
97	Canadian Forest Products Ltd.	Prince George	Northern Interior	Prince George	132
110	Canadian Forest Products Ltd.	Quesnel	Southern Interior	Quesnel	264
122	Canadian Forest Products Ltd.	Fort St John	Northern Interior	Peace	219
130	Canadian Forest Products Ltd.	Mackenzie	Northern Interior	Mackenzie	255
135	Canadian Forest Products Ltd.	Isle Pierre	Northern Interior	Prince George	192
140	Canadian Forest Products Ltd.	Engen	Northern Interior	Vanderhoof	432
153	Canadian Forest Products Ltd.	Prince George	Northern Interior	Prince George	269
160	Canadian Forest Products Ltd.	Bear Lake	Northern Interior	Prince George	132
166	Canadian Forest Products Ltd.	Prince George	Northern Interior	Prince George	269
193	Canadian Forest Products Ltd.	Houston	Northern Interior	Nadina	480
150	Carrier Lumber Ltd.	Prince George	Northern Interior	Prince George	264
330	Catalyst Paper	Campbell River	Coast	Campbell River	113
737	Cheslatta Forest Products Ltd.	Ootsa Lake	Northern Interior	Nadina	100
742	Corwood Timber Products Ltd.	Houston	Northern Interior	Nadina	14
377	Coulson Manufacturing Ltd	Port Alberni	Coast	South Island	31
326	Delta Cedar Products Ltd.	Delta	Coast	Chilliwack	38
741	Dove Creek Timber Corp.	Courtenay	Coast	Campbell River	11
45	Downie Timber Ltd.	Revelstoke	Southern Interior	Columbia	110
158	Dunkley Lumber Ltd.	Strathnaver	Northern Interior	Prince George	576
11	Eagle River Industries Inc.	Malakwa	Southern Interior	Okanagan Shuswap	46
301	Errington Cedar Products Ltd.	Errington	Coast	South Island	20
953	First Forest Products Ltd	Prince George	Northern Interior	Prince George	24
714	Franklin Forest Products Ltd.	Port Alberni	Coast	South Island	22
66	Gilbert Smith For Prod Ltd.	Barriere	Southern Interior	Kamloops	48

**THE FOLLOWING MILLS HAD CAPACITY OF MORE THAN 10 MILLION BOARD FEET OF LUMBER IN 2008**

Mill Number	Company	Location of Mill	Forest Region	Forest District	Estimated Annual Capacity (millions of board feet)
537	Goldwood Industries Ltd.	Richmond	Coast	Chilliwack	58
14	Gorman Bros Lumber Ltd.	Westbank	Southern Interior	Okanagan Shuswap	120
172	Hauer Bros. Lumber Ltd.	Tete Jaune Cache	Southern Interior	Headwaters	17
30	Interfor	Grand Forks	Southern Interior	Arrow Boundary	84
62	Interfor	Castlegar	Southern Interior	Arrow Boundary	240
70	International Forest Products Ltd.	Adams Lake	Southern Interior	Kamloops	149
283	International Forest Products Ltd.	Delta	Coast	Chilliwack	192
297	International Forest Products Ltd.	Hammond	Coast	Chilliwack	154
88	J H Huscroft Ltd.	Erickson	Southern Interior	Kootenay Lake	50
100	J.S. Jones	Surrey	Coast	Chilliwack	154
47	Joe Kozek Sawmills Ltd.	Revelstoke	Southern Interior	Columbia	14
50	Kalesnikoff Lumber Co. Ltd.	Thrms	Southern Interior	Arrow Boundary	72
184	Kitwanga Mills Ltd.	Kitwanga	Northern Interior	Skeena Stikine	51
144	L & M Lumber Ltd.	Vanderhoof	Northern Interior	Vanderhoof	188
149	Lakeland Mills Ltd.	Prince George	Northern Interior	Prince George	154
597	Lakeside Timber (2007) Ltd.	Tappen	Southern Interior	Okanagan Shuswap	14
255	Larry Buff Sawmills Ltd.	Westwold	Southern Interior	Okanagan Shuswap	12
712	Long Hoh Enterprises Canada Ltd	Qualicum Beach	Coast	South Island	38
361	Mackenzie Sawmill Ltd.	Surrey	Coast	Chilliwack	48
336	Mill & Timber Products Ltd.	Port Moody	Coast	Chilliwack	77
403	Mill & Timber Products Ltd.	Surrey	Coast	Chilliwack	60
408	Nagaard Sawmills Ltd.	Port Alberni	Coast	South Island	16
22	Noble Custom Cut Ltd.	Whonnock	Coast	Chilliwack	48
618	North Enderby Timber Ltd.	Enderby	Southern Interior	Okanagan Shuswap	31
710	Northern Lumber Solutions Ltd	Prince George	Northern Interior	Prince George	19
713	Paragon Ventures Ltd.	Lumby	Southern Interior	Okanagan Shuswap	48
732	PG Sort Yard	Prince George	Northern Interior	Prince George	19
626	Porcupine Wood Products Ltd.	Salmo	Southern Interior	Arrow Boundary	41
454	S & R Sawmills Ltd.	Surrey	Coast	Chilliwack	216
480	Schapol Logging Ltd.	Enderby	Southern Interior	Okanagan Shuswap	13
750	Sigurdson Bros. Logging Company	Williams Lake	Southern Interior	Central Cariboo	72
740	Sigurdson Forest Products Ltd.	Hanceville	Southern Interior	Chilcotin	72
631	Silvermere Forest Prod Ltd.	Ruskin	Coast	Chilliwack	12
55	Springer Creek Forest Products	Slocan	Southern Interior	Arrow Boundary	115
539	Stag Timber Ltd.	Surrey	Coast	Chilliwack	77
79	Tembec Industries Ltd.	Canal Flats	Southern Interior	Rocky Mountain	176
82	Tembec Industries Ltd.	Elko	Southern Interior	Rocky Mountain	188

---

**THE FOLLOWING MILLS HAD CAPACITY OF MORE THAN 10 MILLION BOARD FEET OF LUMBER IN 2008**

---

Mill Number	Company	Location of Mill	Forest Region	Forest District	Estimated Annual Capacity (millions of board feet)
396	Terminal Forest Products Ltd.	Vancouver	Coast	Chilliwack	204
540	Terminal Forest Products Ltd.	Richmond	Coast	Chilliwack	192
20	Tolko Industries Ltd.	Lavington	Southern Interior	Okanagan Shuswap	193
25	Tolko Industries Ltd.	Merritt	Southern Interior	Cascades	218
67	Tolko Industries Ltd.	Kelowna	Southern Interior	Okanagan Shuswap	204
68	Tolko Industries Ltd.	Armstrong	Southern Interior	Okanagan Shuswap	240
98	Tolko Industries Ltd.	Quesnel	Southern Interior	Quesnel	148
101	Tolko Industries Ltd.	Williams Lake	Southern Interior	Central Cariboo	256
103	Tolko Industries Ltd.	Williams Lake	Southern Interior	Central Cariboo	254
107	Tolko Industries Ltd.	Williams Lake	Southern Interior	Central Cariboo	180
453	Twin River Cedar Products Ltd.	Ruskin	Coast	Chilliwack	43
639	West Chilcotin Forest Products Ltd.	Anahim Lake	Southern Interior	Chilcotin	115
95	West Fraser Mills Ltd.	100 Mile House	Southern Interior	100 Mile House	237
113	West Fraser Mills Ltd.	Quesnel	Southern Interior	Quesnel	298
114	West Fraser Mills Ltd.	Williams Lake	Southern Interior	Central Cariboo	170
181	West Fraser Mills Ltd.	Burns Lake	Northern Interior	Nadina	86
191	West Fraser Mills Ltd.	Smithers	Northern Interior	Skeena Stikine	221
214	West Fraser Mills Ltd.	Clinton	Southern Interior	100 Mile House	199
526	West Fraser Mills Ltd.	Quesnel	Southern Interior	Quesnel	154
530	West Fraser Mills Ltd.	Houston	Northern Interior	Nadina	261
532	West Fraser Mills Ltd.	LeJac	Northern Interior	Vanderhoof	260
552	West Fraser Mills Ltd.	Chetwynd	Northern Interior	Peace	254
320	Western Forest Products	Cowichan Bay	Coast	South Island	151
376	Western Forest Products	Ladysmith	Coast	South Island	37
392	Western Forest Products	Port Alberni	Coast	South Island	68
393	Western Forest Products	Chemainus	Coast	South Island	81
528	Western Forest Products	Port Alberni	Coast	South Island	113
531	Western Forest Products	Nanaimo	Coast	South Island	119
546	Western Forest Products	Duke Point	Coast	South Island	86
442	Western Forest Products Ltd.	Ladysmith	Coast	South Island	110
29	Weyerhaeuser Company Ltd.	Princeton	Southern Interior	Cascades	162
162	Winton Global	Bear Lake	Northern Interior	Prince George	216
672	Woodland Forest Products Ltd	Prince George	Northern Interior	Prince George	29
93	Wynndel Box & Lumber Co. Ltd.	Wynndel	Southern Interior	Kootenay Lake	67

**THE FOLLOWING MILLS HAD CAPACITY OF LESS THAN 10 MILLION BOARD FEET OF LUMBER IN 2008**

Mill Number	Company	Location of Mill	Forest Region	Forest District	Estimated Annual Capacity (millions of board feet)
905	Blacktail Enterprises	Black Creek	Coast	Campbell River	0.5
719	Dale Edwards	Ucluelet	Coast	South Island	0.5
26	Edge Grain Cedar	Maple Ridge	Coast	Chilliwack	0.5
717	Edgegrain	Campbell River	Coast	Campbell River	0.5
705	Heartwood Ventures	Cumberland	Coast	Campbell River	0.5
445	Beaver Forest Products Ltd	Campbell River	Coast	Campbell River	1
941	Eggers Forest Products	Salmo	Southern Interior	Arrow Boundary	1
32	Gibbs Custom Sawmill	McBride	Southern Interior	Headwaters	1
482	Notch Hill Forest Products Ltd.	Sorrento	Southern Interior	Okanagan Shuswap	1
654	Spike Top Cedar Ltd.	Port Hardy	Coast	North Island - Central Coast	1
716	Westcoast Wood'n Ventures	Port Hardy	Coast	North Island - Central Coast	1
743	John Salo	Sointula	Coast	North Island - Central Coast	1
679	G.C. Williams Milling	Malcolm Island	Coast	North Island - Central Coast	1
535	Pro Cut Lumber Corp.	Lk Cowichan Hwy	Coast	South Island	1
907	Saratoga Speedway Mills	Campbell River	Coast	Campbell River	1
567	Green Forest Products Ltd.	Merville	Coast	Campbell River	2
194	Mike Gogo Cedar Products	Nanaimo	Coast	South Island	2
347	Ye' Old Dogwood Lumber	Cowichan Lake	Coast	South Island	2
744	Rainbow Lumber	Whiskey Creek	Coast	South Island	2
731	SCG Forest Inc.	Courtenay	Coast	Campbell River	2
698	Wildwood Forest Products Ltd.	Williams Lake	Southern Interior	Central Cariboo	2
708	Island Pacific Wood Products	Tahsis	Coast	Campbell River	3
582	Quadra Island Forest Products Ltd.	Quadra Island	Coast	Campbell River	3
715	100 Mile Wood Products	100 Mile House	Southern Interior	100 Mile House	4
957	Gold Island Forest Products Ltd.	Slocan	Southern Interior	Arrow Boundary	4
199	North Star Planing Co. Ltd.	Athalmer	Southern Interior	Rocky Mountain	4
99	Ukass Logging Ltd.	Wilmer Creek	Southern Interior	Rocky Mountain	4
643	Bear Lumber Ltd.	Cranbrook	Southern Interior	Rocky Mountain	4
16	JRP Contracting	Hatzic	Coast	Chilliwack	5
514	Simpcw Development Co Ltd.	Barriere	Southern Interior	Kamloops	5
96	Thomson Bros. Lumber Co. Ltd.	Courtenay	Coast	Campbell River	5
229	Wadlegger Log & Constr. Co.	Raft River	Southern Interior	Headwaters	5
271	Rouck Brothers Sawmill Ltd.	Lumby	Southern Interior	Okanagan Shuswap	6
23	Shannon Lumber	Mission	Coast	Chilliwack	6
738	Chalwood Forest Products LTD.	Port Alberni	Coast	South Island	7
247	Jones Ties and Poles (1978) Ltd.	Rossland	Southern Interior	Arrow Boundary	7
702	Linde Bros Lumber Ltd.	Williams Lake	Southern Interior	Central Cariboo	7

---

**THE FOLLOWING MILLS HAD CAPACITY OF LESS THAN 10 MILLION BOARD FEET OF LUMBER IN 2008**

---

Mill Number	Company	Location of Mill	Forest Region	Forest District	Estimated Annual Capacity (millions of board feet)
542	Marsh Bros Lumber and Supply Ltd.	McBride	Southern Interior	Headwaters	7
399	Goat Lake Forest Products	Lang Bay	Coast	Sunshine Coast	9
24	Suncoast Lumber and Milling	Sechelt	Coast	Sunshine Coast	9
512	Jemico Enterprises Ltd.	Chemainus	Coast	South Island	9
286	Mount Baldy Forest Products Inc.	Rock Creek	Southern Interior	Arrow Boundary	9
197	McDonald Ranch & Lumber Ltd.	Grasmere	Southern Interior	Rocky Mountain	10
917	Sheraton Holdings Ltd.	Burns Lake	Northern Interior	Nadina	10
602	T.L. Timber Ltd.	Cawston	Southern Interior	Okanagan Shuswap	10

## **Pellet Mills**

(Listed Alphabetically)

Mills producing wood pellets for bio-energy are listed in this section.

Notes:

1. Measurement units are in thousands of tonnes.
2. Estimated annual capacity for pellet mills is based on a standardized operation of 345 days per year, three 8 hour shifts per day. Actual operations may vary from these schedules.

**PELLET MILLS - 2008**

Mill Number	Company	Location of Mill	Forest Region	Forest District	Estimated Annual Capacity ('000s of tonnes)
930	Pacific BioEnergy	Prince George	Northern Interior	Prince George	186
929	Pinnacle Pellet Armstrong Inc.	Armstrong	Southern Interior	Okanagan Shuswap	56
931	Pinnacle Pellet Inc.	Quesnel	Southern Interior	Quesnel	83
947	Pinnacle Pellet Inc.	Houston	Northern Interior	Nadina	166
948	Pinnacle Pellet Inc.	Williams Lake	Southern Interior	Central Cariboo	166
932	Premium Pellet Ltd.	Vanderhoof	Northern Interior	Vanderhoof	130
933	Princeton Co-Generation Corp	Princeton	Southern Interior	Cascades	83
935	Westwood Fibre Products	Westbank	Southern Interior	Okanagan Shuswap	66

## **Pole and Post Mills**

(Listed Alphabetically)

Mills producing poles and posts are listed in this section.

### Notes:

1. Measurement units are in thousands of pieces ('000 pcs).
2. Estimated annual capacity is based on a standardized operation of 240 days per year, one 8 hour shift per day, although actual mill operations may vary from this schedule.



**UTILITY POLE MILLS - 2008**

Mill Number	Company	Location of Mill	Product	Forest Region	Forest District	Estimated Annual Capacity ('000s of pieces)
659	Brisco Wood Preservers Ltd.	Brisco	UTI	Southern Interior	Rocky Mountain	26
556	Chinook Forest Products Ltd.	Courtenay	UTI	Coast	Campbell River	24
40	Gorman Bros Lumber Ltd.	Lumby	UTI	Southern Interior	Okanagan Shuswap	29
222	Kanaka Creek Pole Company	Haney	UTI	Coast	Chilliwack	24
725	O'Brien & Fuerst Logging Ltd.	Port Clements	UTI	Coast	Queen Charlotte	19
677	Pacific Inland Pole & Piling Ltd.	Nakusp	UTI	Southern Interior	Arrow Boundary	18
188	Paterson Pole Ltd.	Rossland	UTI	Southern Interior	Arrow Boundary	36
232	Princeton Wood Preservers Ltd	Princeton	UTI	Southern Interior	Cascades	29
619	Quinton Bros.	Caven	UTI	Southern Interior	Rocky Mountain	19
648	Selkirk Forest Products Ltd.	Galloway	UTI	Southern Interior	Rocky Mountain	31
729	Sierra Cascade Resources II L.L.C.	Kelsey Bay Division	UTI	Coast	Campbell River	6
48	Stella Jones Canada Inc.	Revelstoke	UTI	Southern Interior	Columbia	36
637	Stella-Jones Inc.	Prince George	UTI	Northern Interior	Prince George	55
181	West Fraser Mills Ltd.	Burns Lake	UTI	Northern Interior	Nadina	19

**OTHER POLE AND POST MILLS - 2008**

Mill Number	Company	Location of Mill	Product	Forest Region	Forest District	Estimated Annual Capacity ('000s of pieces)
498	Aspen Planers Ltd.	Merritt	PLE	Southern Interior	Cascades	960
498	Aspen Planers Ltd.	Merritt	PST	Southern Interior	Cascades	480
390	Box Lake Lumber Prod Ltd	Nakusp	PST	Southern Interior	Arrow Boundary	144
556	Chinook Forest Products Ltd.	Courtenay	PST	Coast	Campbell River	5
117	Continental Pole Ltd.	Pemberton	PLE	Coast	Squamish	0
724	Integrated Pole	100 Mile House	PLE	Southern Interior	100 Mile House	11
970	KDL Group - Northern Forest Products	Fort St James	PST	Northern Interior	Fort St James	1200
721	Mego Wood Products (1989) Ltd.	Merritt	PLE	Southern Interior	Cascades	960
721	Mego Wood Products (1989) Ltd.	Princeton	PST	Southern Interior	Cascades	480
607	Monte Lake Forest Products Inc.	Monte Lake	PST	Southern Interior	Okanagan Shuswap	1800
250	Nicola Post and Rail Co. Ltd.	Merritt	PST	Southern Interior	Cascades	480
677	Pacific Inland Pole & Piling Ltd.	Nakusp	PLE	Southern Interior	Arrow Boundary	12
279	Palmer Bar Holdings Inc.	Lumberton	PLE	Southern Interior	Rocky Mountain	187
279	Palmer Bar Holdings Inc.	Lumberton	PST	Southern Interior	Rocky Mountain	960
739	Panhandle Forest Products	Lumberton	PST	Southern Interior	Rocky Mountain	288

## **Pulp and Paper Mills**

(Listed Alphabetically)

Mills producing pulp and paper are listed in this section. For integrated mills, pulp capacity includes pulp that is used internally to produce paper, and pulp that is shipped from the mill site as market pulp.

### Notes:

1. Measurement units are in thousands of tonnes.
2. Estimated annual capacity is based on a standardized operation of 345 operating days per year, 24 hours per day. Actual operations may vary from this schedule.

**PULP AND PAPER MILLS - 2008**

Mill Number	Company	Location of Mill	Product	Forest Region	Forest District	Estimated Annual Capacity (000s of tonnes)
128	Abitibi-Consolidated Company of Canada	Mackenzie	PPR	Northern Interior	Mackenzie	157
335	Canadian Forest Products Ltd.	Taylor	PLP	Northern Interior	Peace	210
500	Canadian Forest Products Ltd.	Prince George	PLP	Northern Interior	Prince George	131
500	Canadian Forest Products Ltd.	Prince George	PPR	Northern Interior	Prince George	131
503	Canadian Forest Products Ltd.	Prince George	PLP	Northern Interior	Prince George	562
960	Canadian Forest Products Ltd. (Intercon Div.	Prince George	PLP	Northern Interior	Prince George	295
497	Cariboo Pulp & Paper Co. Ltd.	Quesnel	PLP	Southern Interior	Quesnel	328
206	Catalyst paper	Coquitlam	PLP	Coast	Chilliwack	150
330	Catalyst Paper	Duncan Bay	PLP	Coast	Campbell River	182
330	Catalyst Paper	Duncan Bay	PPR	Coast	Campbell River	633
483	Catalyst Paper	Crofton	PLP	Coast	South Island	691
483	Catalyst Paper	Crofton	PPR	Coast	South Island	345
486	Catalyst Paper	Powell River	PLP	Coast	Sunshine Coast	347
486	Catalyst Paper	Powell River	PPR	Coast	Sunshine Coast	437
487	Catalyst Paper	Port Alberni	PLP	Coast	South Island	168
487	Catalyst Paper	Port Alberni	PPR	Coast	South Island	319
2	Domtar	Kamloops	PLP	Southern Interior	Kamloops	460
496	Eurocan Pulp & Paper Co.	Kitimat	PLP	Northern Interior	Kalum	449
496	Eurocan Pulp & Paper Co.	Kitimat	PPR	Northern Interior	Kalum	452
484	Howe Sound Pulp & Paper Ltd.	Port Mellon	PLP	Coast	Sunshine Coast	656
484	Howe Sound Pulp & Paper Ltd.	Port Mellon	PPR	Coast	Sunshine Coast	242
491	Kruger Products Ltd.	New Westminster	PLP	Coast	Chilliwack	31
491	Kruger Products Ltd.	New Westminster	PPR	Coast	Chilliwack	124
488	Nanaimo Forest Products	Cedar	PLP	Coast	South Island	407
489	Neucel Specialty Cellulose	Port Alice	PLP	Coast	North Island - Central Coast	173
553	Quesnel River Pulp Company	Quesnel	PLP	Southern Interior	Quesnel	327
1	Tembec Industries Ltd.	Skookumchuk	PLP	Southern Interior	Rocky Mountain	250
205	Tembec Industries Ltd.	Chetwynd	PLP	Northern Interior	Peace	224
501	Zellstoff Celgar Limited Partnership	Castlegar	PLP	Southern Interior	Arrow Boundary	466

## **Shake and Shingle Mills**

(Listed Alphabetically)

Mills that produce shake and shingles are listed in this section.

### Notes:

1. Measurement units are in thousands of roofing squares ('000 sq). A roofing square is approximately 100 square feet.
2. Estimated annual capacity is based on a standardized operation of 240 days per year, two 8 hour shifts per day. Actual mill operations may vary from this schedule.

**SHAKE AND SHINGLE MILLS - 2008**

Mill Number	Company	Location of Mill	Forest Region	Forest District	Estimated Annual Capacity ('000s of squares)
673	Anbrook Industries Ltd.	Pitt Meadows	Coast	Chilliwack	67
288	B C F Shake Mill Ltd.	Fanny Bay	Coast	South Island	49
688	Best Quality Cedar Products Ltd	Maple Ridge	Coast	Chilliwack	139
706	Bill Little Contracting Ltd	Campbell River	Coast	Campbell River	4
449	Campbell River Shake and Shingle Co Ltd	Campbell River	Coast	Campbell River	5
583	Coast Mountain Cedar Products	Mission	Coast	Chilliwack	103
315	Comox Valley Shakes Ltd.	Campbell River	Coast	Campbell River	55
638	Confederate Shake & Shingle Ltd.	Youbou	Coast	South Island	19
69	Copper Mountain Cedar Products	Terrace	Northern Interior	Kalum	8
972	Crawford Shake & Shingle Ltd.	Cowichan Bay	Coast	South Island	0
587	G & R Cedar Ltd.	Matsqui	Coast	Chilliwack	84
399	Goat Lake Forest Products	Powell River	Coast	Sunshine Coast	58
671	Graham Island Forest Products Ltd.	Masset	Coast	Queen Charlotte	38
72	Imperial Shake Co Ltd	Maple Ridge	Coast	Chilliwack	144
687	Imperial Shake Co Ltd	Maple Ridge	Coast	Chilliwack	144
599	J & D Shake & Cedar Mill Ltd	Mission	Coast	Chilliwack	77
321	J & D Shake and Cedar Mill Ltd.	Duncan	Coast	South Island	72
711	Port Hardy Merchandising Ltd.	Port Hardy	Coast	North Island - Central Coast	29
460	Port McNeill Shake & Shingles (2007) Ltd.	Port McNeill	Coast	North Island - Central Coast	29
266	Premium Cedar Products Ltd.	Ruskin	Coast	Chilliwack	121
374	Remco Shake & Shingle Prod Ltd.	Cooper Creek	Southern Interior	Kootenay Lake	18
455	S & W Shake & Shingle Ltd.	Ruskin	Coast	Chilliwack	120
591	Serpentine Cedar Ltd.	Fort Langley	Coast	Chilliwack	58
612	Silver Creek Premium Products	Mission	Coast	Chilliwack	336
631	Silvermere Forest Prod Ltd.	Ruskin	Coast	Chilliwack	36
902	Taylor Contracting Ltd.	Zeballos	Coast	Campbell River	12
106	Teal Cedar Prod (1977) Ltd.	Surrey	Coast	Chilliwack	336
722	Teal-Jones Group - Titan Ridge Operation	Port McNeill	Coast	North Island - Central Coast	155
723	Vancouver Island Shake and Shingle	Port McNeill	Coast	North Island - Central Coast	12
691	W. Boyes Shake and Shingle Ltd.	Gateway	Southern Interior	100 Mile House	14
464	Waldun Forest Products Ltd.	Ruskin	Coast	Chilliwack	197

## Veneer, Plywood, OSB and Other Panel Mills

(Listed Alphabetically)

Mills producing veneer, plywood and other types of panel are listed in this section. For mills that produce both market veneer and plywood, veneer capacity includes market veneer and the veneer that is used within the mill to manufacture plywood. Panel mills that use wood residuals to produce panels or that do not have log-processing capability are also listed in this report.

### Notes:

1. Measurement units are in millions of square feet, 3/8" basis (mill. sq. ft.,3/8").
2. Estimated annual capacity for veneer mills is based on a standardized operation of 240 days per year, two 8 hour shifts per day. For plywood mills, estimated annual capacity is based on a standardized operation of 240 days per year, three 8 hour shifts per day. For OSB and other Panel mills, estimated annual capacity is based on a standardized operation of 345 days per year, three 8 hour shifts per day. Actual operations may vary from these schedules.

VENEER, PLYWOOD, OSB AND OTHER PANEL MILLS - 2008

Mill Number	Company	Location of Mill	Product	Forest Region	Forest District	Estimated Annual Capacity (million sq. ft, 3/8" basis)
109	Ainsworth Lumber Co. Ltd.	Savona	PLY	Southern Interior	Kamloops	137
115	Ainsworth Lumber Co. Ltd.	Lillooet	VNR	Southern Interior	Cascades	96
411	Ainsworth Lumber Co. Ltd.	100 Mile House	OSB	Southern Interior	100 Mile House	428
51	Atco Wood Products	Fruitvale	VNR	Southern Interior	Arrow Boundary	110
121	Canadian Forest Products Ltd.	Fort Nelson	PLY	Northern Interior	Fort Nelson	203
121	Canadian Forest Products Ltd.	Fort Nelson	VNR	Northern Interior	Fort Nelson	135
459	Canadian Forest Products Ltd.	Fort Nelson	OSB	Northern Interior	Fort Nelson	672
508	CIPA Lumber Co. Ltd.	Annacis Island	VNR	Coast	Chilliwack	260
244	Coastland Wood Industries Ltd.	Nanaimo	VNR	Coast	South Island	213
12	Federated Co-op Ltd.	Canoe	PLY	Southern Interior	Okanagan Shuswap	158
12	Federated Co-op Ltd.	Canoe	VNR	Southern Interior	Okanagan Shuswap	144
84	Louisiana Pacific Canada Ltd.	Golden	PLY	Southern Interior	Columbia	115
84	Louisiana Pacific Canada Ltd.	Golden	VNR	Southern Interior	Columbia	83
650	Louisiana Pacific Canada Ltd.	Dawson Creek	OSB	Northern Interior	Peace	388
357	Northern Engineering Wood Products Inc.	Smithers	PNL	Northern Interior	Skeena Stikine	94
942	Peace Valley OSB	Fort St John	OSB	Northern Interior	Peace	419
940	Rae-Mark Veneer	Salmo	VNR	Southern Interior	Arrow Boundary	0
478	Richmond Plywood Corp. Ltd.	Richmond	PLY	Coast	Chilliwack	227
478	Richmond Plywood Corp. Ltd.	Richmond	VNR	Coast	Chilliwack	173
35	Tolko Industries Ltd.	Lumby	VNR	Southern Interior	Okanagan Shuswap	211
67	Tolko Industries Ltd.	Kelowna	VNR	Southern Interior	Okanagan Shuswap	173
394	Tolko Industries Ltd.	Heffley Creek	PLY	Southern Interior	Kamloops	184
394	Tolko Industries Ltd.	Heffley Creek	VNR	Southern Interior	Kamloops	154
105	West Fraser Mills Ltd.	Williams Lake	PLY	Southern Interior	Central Cariboo	197
105	West Fraser Mills Ltd.	Williams Lake	VNR	Southern Interior	Central Cariboo	120
112	West Fraser Mills Ltd.	Quesnel	PLY	Southern Interior	Quesnel	199
112	West Fraser Mills Ltd.	Quesnel	VNR	Southern Interior	Quesnel	134
113	West Fraser Mills Ltd.	Quesnel	PNL	Southern Interior	Quesnel	231



## **Other Primary Processing Mills**

(Listed Alphabetically)

Mills listed in this section have log processing capability but do not produce any of the previously listed products.

**OTHER MILLS - 2008**

---

Mill Number	Company	Location of Mill	Product	Forest Region	Forest District
84	Louisiana Pacific Canada Ltd.	Golden	LVL	Southern Interior	Columbia

---

