



Province of
British Columbia
Ministry of Lands,
Parks and Housing

ROBERTS
MASTER

Ministry of Lands, Parks and Housing
Parks and Outdoor Recreation Division
Park Operations Branch
North Vancouver, B. C.

ROBERTS CREEK PROVINCIAL PARK

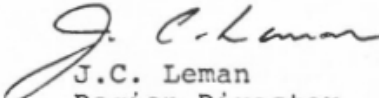
MASTER PLAN

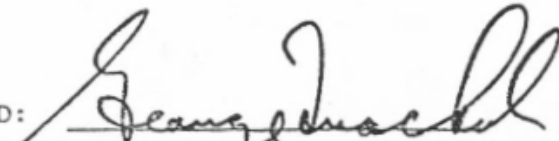
November, 1981

Mr. G. Trachuk
Director
Planning and Research Branch
Parks & Outdoor Recreation Division
Victoria, B.C.

Mr. J.C. Leman
Regional Director
Lower Mainland Region
Parks & Outdoor Recreation Div.
North Vancouver, B.C.

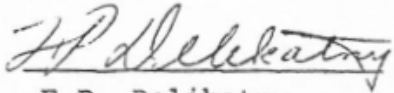
This Master Plan for Roberts Creek Provincial Park is submitted for your approval


J.C. Leman
Region Director

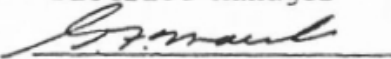
APPROVED: 
G. Trachuk, Director

April 1/82
Date

* If required for publication or at the 5 year review, the plan is to reflect the comprehensive content requirements of the Master Plan Policy at that time.

RECOMMENDED: 
F.P. Delikatny,
District Manager

81-11-27
Date

RECOMMENDED: 
G.F. Macnab, Manager

March 31 1982
Date

TABLE OF CONTENTS

	Page
A. INTRODUCTION	1
1. BACKGROUND	1
2. EXISTING DEVELOPMENT	4
3. PARK USE	7
4. DEMAND	8
B. STATEMENT OF PURPOSE	9
C. PARK RESOURCES STATEMENT	10
D. ZONING	12
E. GENERAL MANAGEMENT STATEMENT	13
F. SPECIFIC MANAGEMENT PLANS	13
G. PLAN IMPLEMENTATION STRATEGY	15
 APPENDIX:	
HIGHWAY TRAFFIC VOLUMES JULY-AUGUST 1972-1980.....	i

LIST OF FIGURES

Figure		Page
1	LOCATION MAP	2
2	PARK AREAS MAP	3
3	CAMPGROUND EXISTING FEATURES AND DEVELOPMENT PLAN	5
4	DAY USE AREA EXISTING FEATURES AND DEVELOPMENT PLAN	6
5	PROPOSED DEVELOPMENT PLAN	14

A. INTRODUCTION

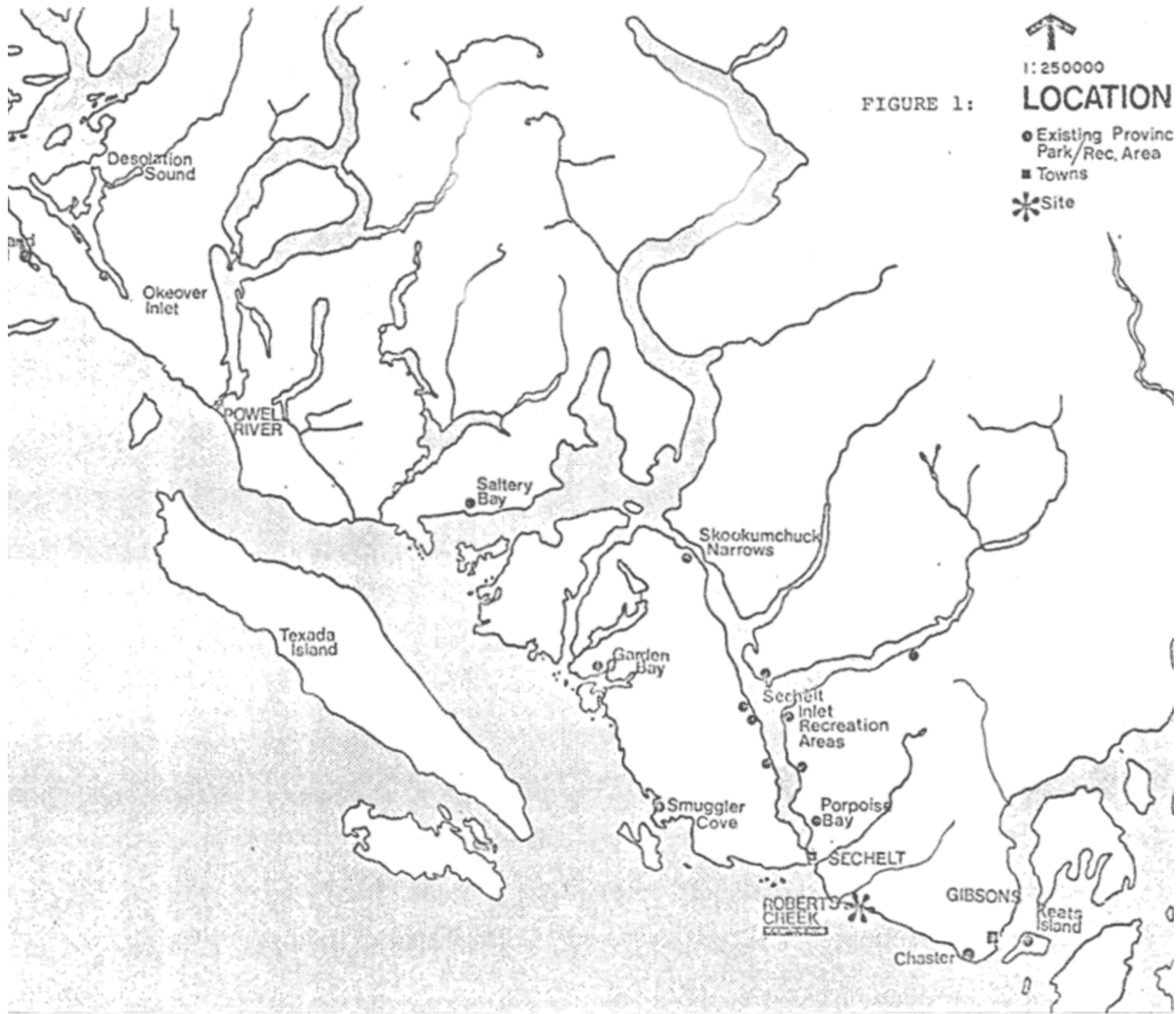
Roberts Creek Provincial Park, Class 'A', Category 6, is situated on the Sunshine Coast 10 kilometres west of Gibsons and approximately 55 kilometres north of Vancouver (Figure 1). The park consists of two separate areas (Figure 2) located about 1 kilometre apart. Access from Vancouver to both areas is via the Horseshoe Bay/Langdale ferry, then north along Highway 101. There are several other Provincial Parks in the area, the largest developed one being Porpoise Bay, covering over 60 hectares.

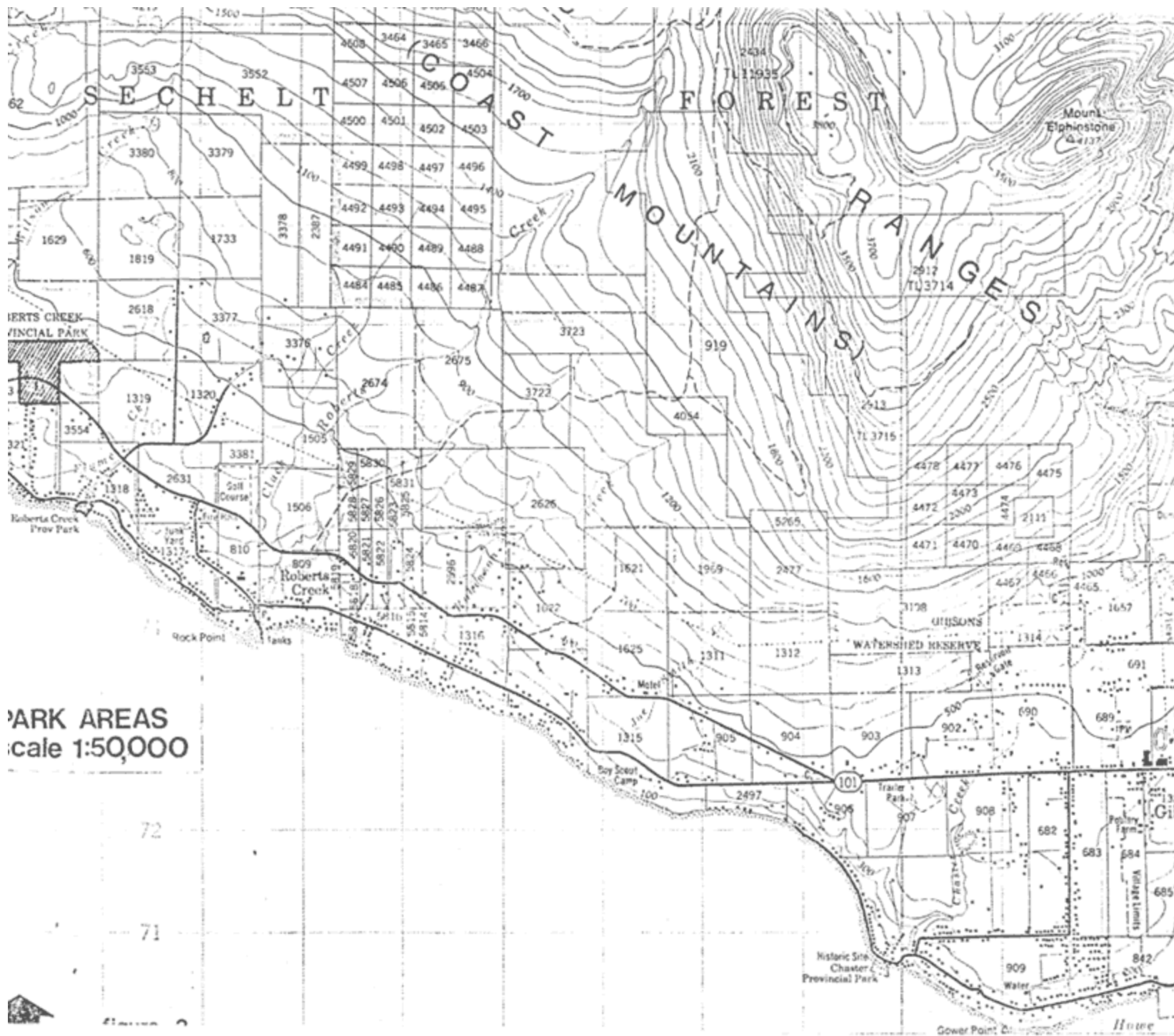
1. BACKGROUND

Roberts Creek Provincial Park is named after the adjacent small community. The origin of the name came from the first settler, Frank Roberts, who homesteaded at the mouth of Roberts Creek in 1900. By 1880, all of the waterfront land around Gibson's Landing had been pre-empted, so Roberts travelled from Gower Point along the coast to the first suitable and available piece of shore front.

Soon, many other settlers came to the area and established a community. The Union Steamship Company made frequent stops at Roberts Creek as part of its regular run up the coast.

The park itself was designated firstly as a Class 'C' Provincial Park in 1947, when the waterfront area was developed for picnicking and day use after many years of unmanaged recreational use. The campground was combined with the day use area seven years later, and both were designated a Class 'A' Provincial Park in 1954. In 1975, a Sub-Regional Systems Plan for the Sunshine Coast identified Roberts Creek as an important day use/camping park in the area and suggested that the day use area be developed for boat launching.





PARK AREAS
scale 1:50000



1:50,000

Gower Point: Di Howe

2. EXISTING DEVELOPMENT

The present park development (Figures 3 and 4) covers two separate areas and includes 25 campsites and day use parking for approximately 14 vehicles.

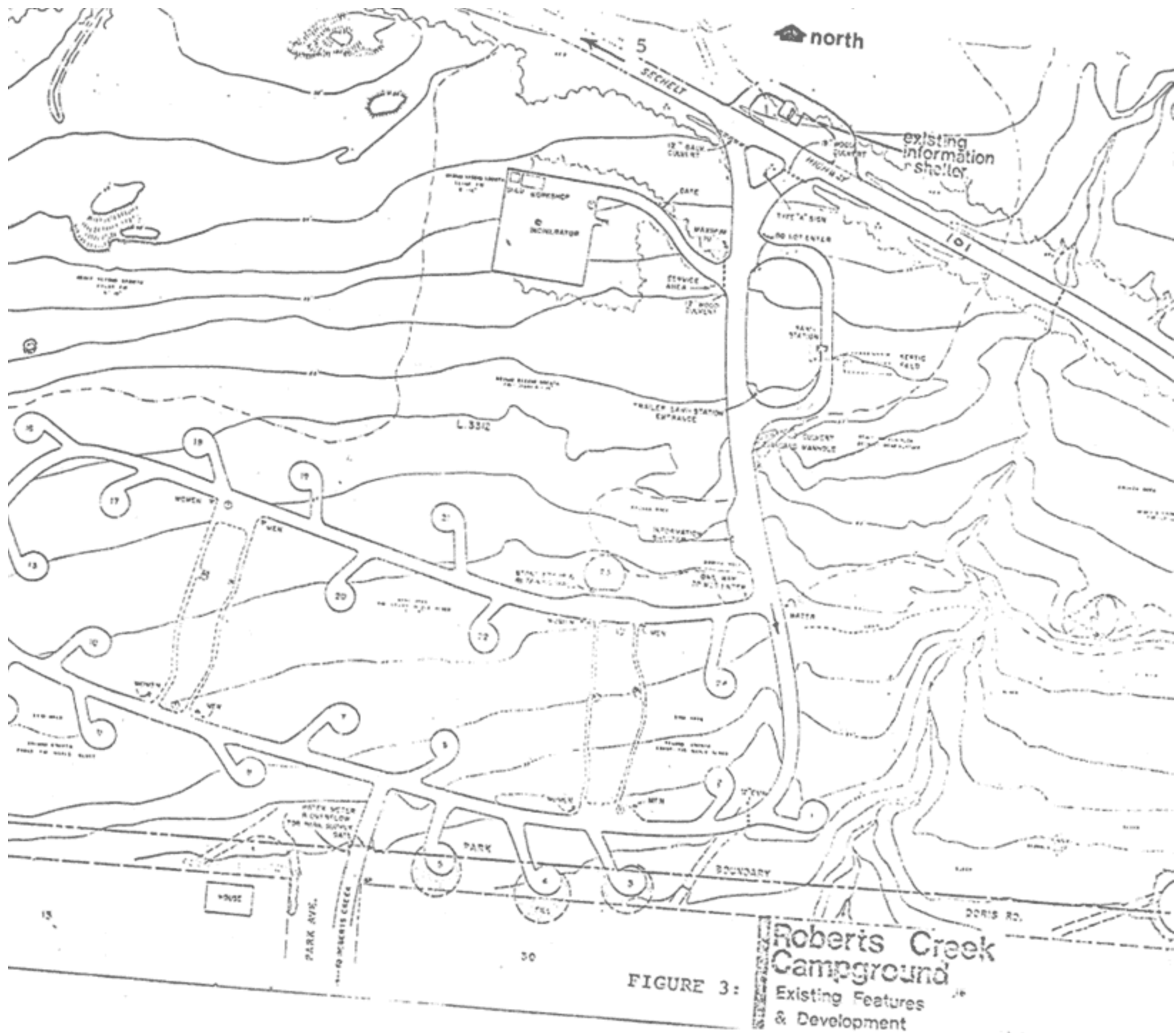
DAY USE AREA

The day use area fronts a small cobble beach which at lower tides reveals several patches of sandy beach that visitors utilize. The backshore consists of gently sloping grass areas with gravel picnicking terraces and off to the side, hidden amongst the trees, are the pit toilets. A small vehicle turnaround near the beach adjacent to the park boundary provides cartop boat launching. Unfortunately, site conditions prevent development of a major ramp boat launch site.

CAMPGROUND

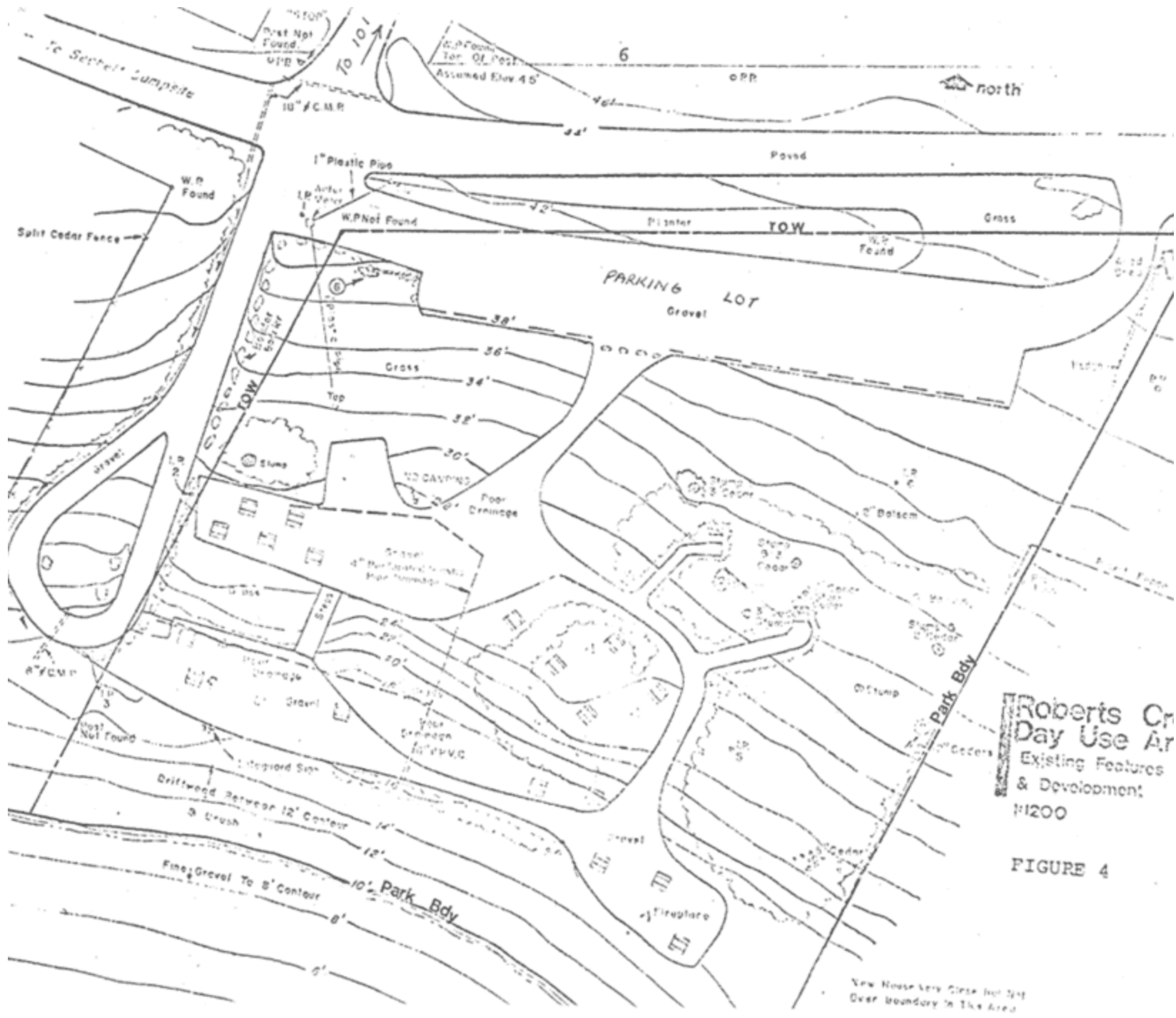
The campground lies adjacent to the highway in a dense Coastal Douglas fir forest. Across the highway from the campground entrance is a Type I information shelter/pull-off, with parking for 8 cars. Off to the side of the entrance road is a small service yard/workshop, while on the opposite side is the sani-station. The campground is equipped with all the essential services, including water, pit toilets, and wood. Each campsite is visually well contained and very private. There are no organized trails in the park.

On the south side of the campground, there is a pedestrian access through a housing sub-division that leads to the day use area about 1 kilometre to the south. However, most people drive down. Parkland on the north side of Highway 101 has not been developed except for the vehicle pull-out.



Robert's Creek
 Campground
 Existing Features
 & Development

FIGURE 3:



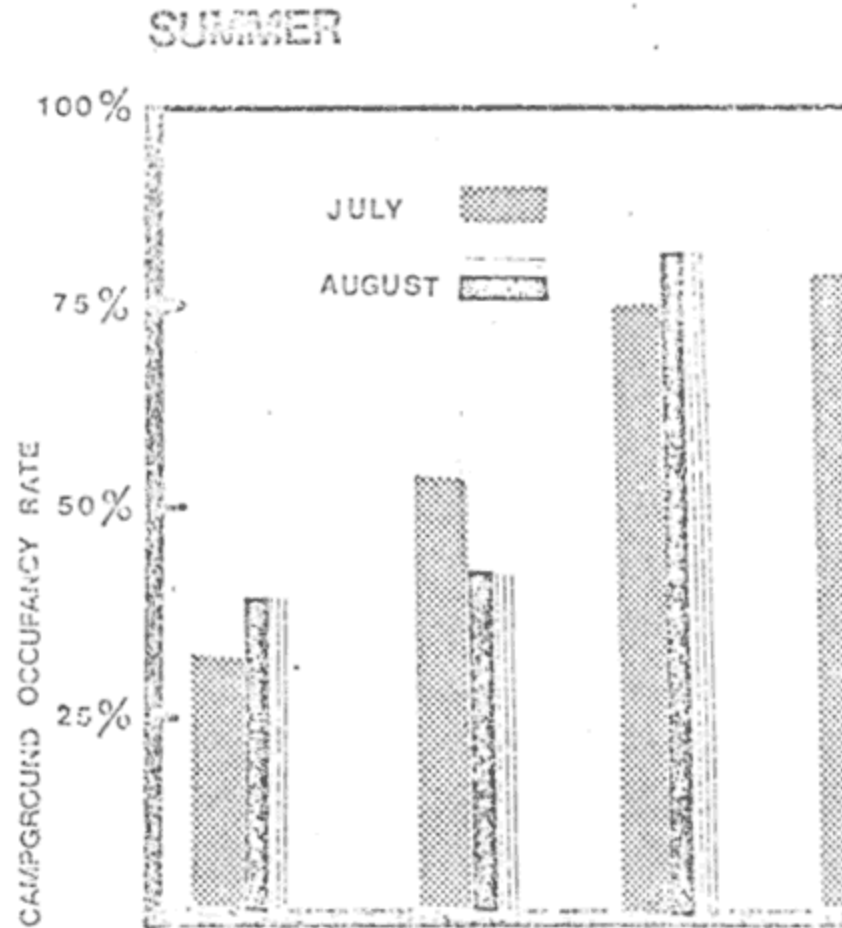
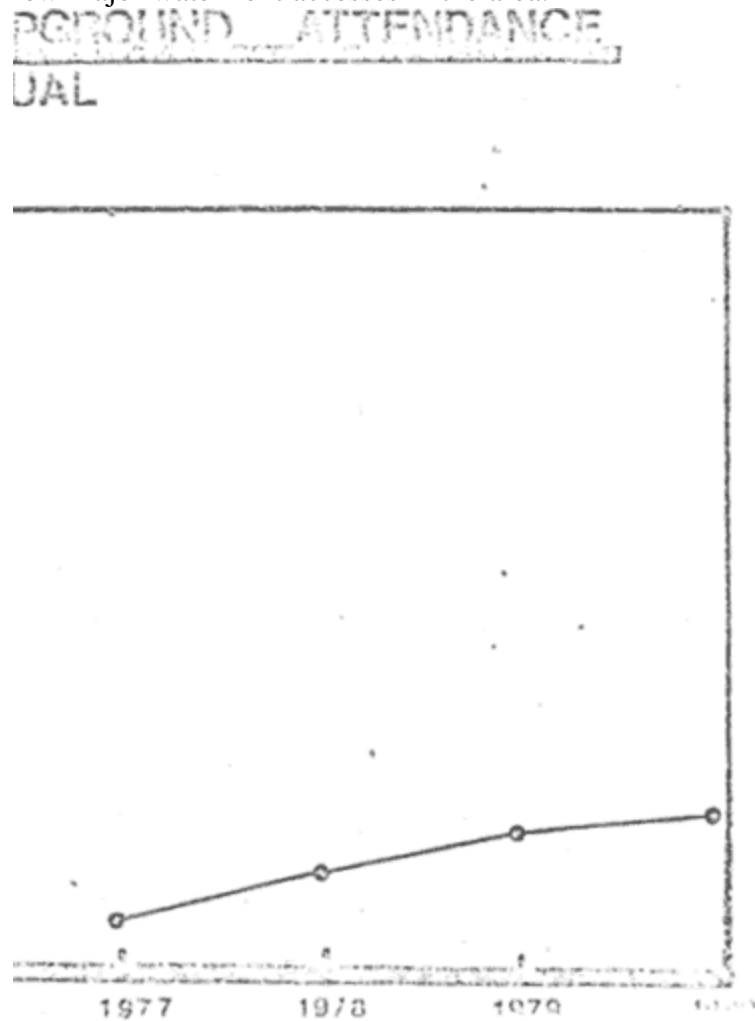
**Roberts Cr
 Day Use Ar**
 Existing Features
 & Development
 11/200

FIGURE 4

New House Very Close but Not
 Over boundary in The Area

3. PARK USE

The number of campers visiting Roberts Creek Provincial Park has varied considerably over the years. A major ferry fare increase in 1976 reduced ferry traffic volumes by 25% and adversely affected the campground attendance. It was not until two years later that ferry traffic was back up to normal levels and park attendance up accordingly. Over the past few years, there has been a steady increase in use of about 5% annually and in 1979, the campground reached peak capacity on 10 separate occasions. There is no recorded data for day use attendance; however, observations by field staff indicate a very heavy weekend use by the local community. Roberts Creek is one of the few major waterfront accesses in the area.



4. DEMAND

Recreation is a significant factor in the future development of the Sunshine Coast. Four of the five goals of the Sunshine Coast Regional District's 1979 Regional Plan relate specifically to the enhancement of recreational potential of the Region. There are 21 policy statements within these goals and almost one third of these policies relate to the scenic and recreational values of the area; the protection of natural areas to maintain the beauty of the Region; and the provision of areas for recreational vehicle and recreational cottage accommodation. Area development policies provide for "tourist commercial areas" and "recreation areas". The recreational areas include Parks and Greenbelt areas.

There is an increase in annual visitation to the Sunshine Coast from 1972 to 1980 (appendix), with the summer vacation months showing the greatest increase in traffic volumes. Annual increments in traffic are projected to continue at 6% to 10% according to the B. C. Ferry Corporation.

Throughout the Sunshine Coast, there are 175 private campsites, with another 60 private campsites being constructed at Wilson Creek, 3 kilometres north of Roberts Creek. The Parks and Outdoor Recreation Division provides 111 campsites, with the only other future campground development planned at Garden Bay (50 campsites). Thus, the dominant number of private sector campsites and the development of more private facilities at Wilson Creek appears to reflect a high demand and a healthy campground industry. As far as Roberts Creek is concerned, although it has a 50% average seasonal occupancy and steady annual increases, the demand for camping opportunities there is expected to level off, given the aforementioned conditions and the ability of other private campgrounds to provide adequate opportunities.

The day use area, on the other hand, is fully developed and unable to meet future demand for waterside recreational opportunities which may be brought about by further upland subdivision and campground development.

B. STATEMENT OF PURPOSE

It is the purpose of the Parks and Outdoor Recreation Division, in cooperation with the Sunshine Coast Regional District and other Provincial and Federal agencies, to provide a diverse recreation system offering varied outdoor opportunities for both tourists and local residents on the Sunshine Coast.

As such, the primary goal of Roberts Creek Provincial Park is to encourage and provide both transient camping opportunities in a scenic forest environment for visitors to the Sunshine Coast and day use/picnicking opportunities in a marine setting for the surrounding residents.

Roberts Creek Park will be managed to provide this intensive recreational use in a manner consistent with the sheltered and tranquil atmosphere.

C. PARK RESOURCES STATEMENT

Roberts Creek lies within the Coastal Douglas Fir biogeoclimatic zone. The thick vegetation in the campground is primarily Douglas fir and cedar, with a sword fern and salal understory.

PHOTOGRAPH NOT AVAILABLE

The area north of the highway and beyond the information shelter is similar in vegetation cover but considerably wetter and contains a number of moss species.

PHOTOGRAPH NOT AVAILABLE

The upland and marine component of the park combine to provide a variety of wildlife habitats. Deer and small mammals such as raccoons and squirrels are observed along with the occasional Bald Eagle and Osprey siting. Offshore, whales, seals and various duck species have been seen. A variety of invertebrate life such as sea stars, mussels and oysters can be found at low tide along the beach.

The day use area has intensive landscaping, which was developed well before park establishment. Included are many ornamental shrubs and grassy slopes.

PHOTOGRAPH NOT AVAILABLE

PHOTOGRAPH NOT AVAILABLE

The beach frontage in the day use area is covered with large, smooth cobbles and large sections of driftwood, representative of longitudinal beach processes. The park resources appear in good condition and do not require modification.

D. ZONING

The day use and campground sections of Roberts Creek Park are limited in area and are heavily used, subsequently both are entirely zoned Development.

The Development Zone includes the area where construction of facilities is necessary to enhance or enable public recreation for camping, picnicking, hiking and viewing.

E. GENERAL MANAGEMENT STATEMENT

Overall management of Roberts Creek Provincial Park will come under the Garibaldi District office, with specific park management procedures emanating from the local office at Porpoise Bay Provincial Park.

F. SPECIFIC MANAGEMENT PLANS

1. RESOURCE MANAGEMENT PLAN

Resource management will involve normal maintenance of the natural areas within the park for visitor observation and enjoyment. The foreshore is not included within the park boundary and does not appear to require increased protection.

2. VISITOR MANAGEMENT PLAN

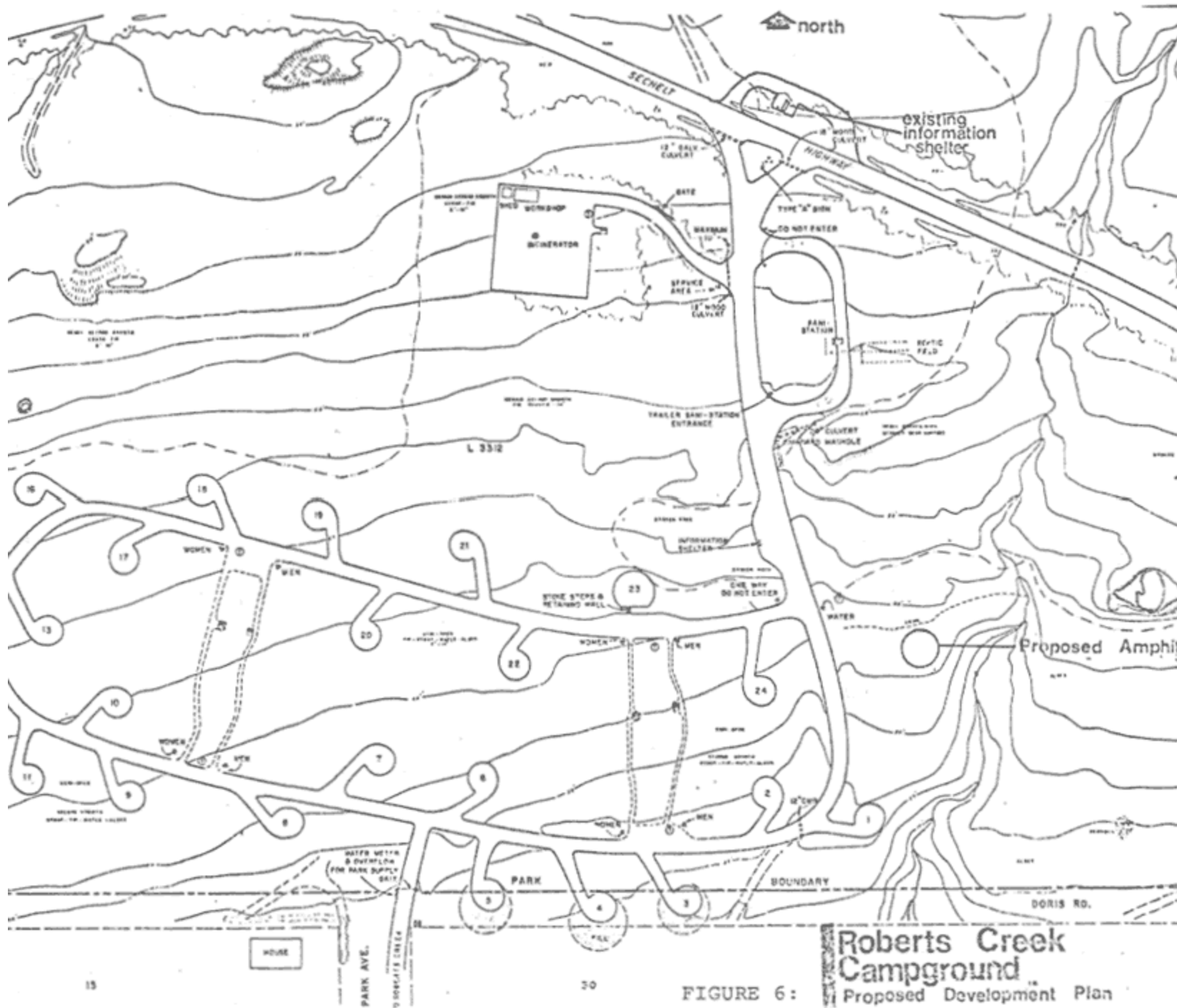
In general terms, Roberts Creek, for the moment, has been fully developed and will remain at current levels (25 campsites); however, the potential maximum is 40 campsites. Unless camping continues to grow in this area, with no resultant increase in private sector growth, no major additional facilities will be developed. Use and demand will be monitored to determine future expansion.

3. INTERPRETATION PLAN

Although the interpretation potential is low, the existing situation should be improved. A small amphitheatre at the campground (Figure 6) consisting of a few logs would be adequate to provide a central focus for interpretation talks. The information shelter on the highway will detail park and recreation opportunities on the Sunshine Coast.

4. ADMINISTRATION PLAN

The administration of this park will be based at Porpoise Bay Provincial Park, with normal management practices implemented.



Roberts Creek
Campground
 Proposed Development Plan

G. PLAN IMPLEMENTATION STRATEGY

Given the current and projected use and development in this park, only one stage of implementation is necessary.

PHASE 1

1. Development of small gathering area (amphitheatre) at the campground.

APPENDIX

HIGHWAY TRAFFIC VOLUMES JULY-AUGUST 1972-1980

STATION	1972	1977	1980
Port Mellon Road 0.8 km north of Langdale Ferry	1100	1300	1800
4.3 km north of Ministry of Highways yard at Gibsons	2800	4700	4600
7.6 km north of Elementary School at Sechelt	1600	2200	2200
1.4 km north of Lang Bay Road at Lang Bay	2000	2100	-----